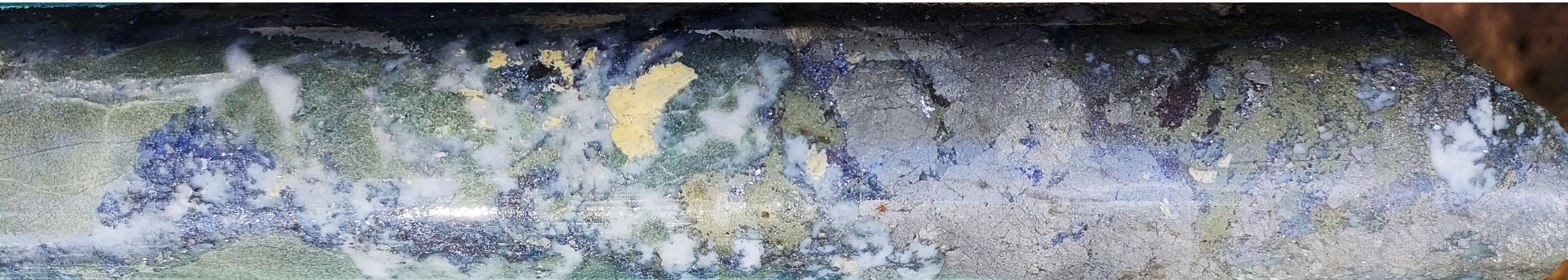




Flynn Gold

ASX: FG1

**Melbourne Mining Club
Cutting Edge
Presentation
18 July 2023**



Trafalgar Prospect - Drill hole TFDD005 - Quartz-sulphide (pyrite-arsenopyrite-pyrrhotite-galena-sphalerite) vein at 120.3m (0.7m @ 152.5g/t Au)

Important Notice & Disclaimer

OVERVIEW

This investor presentation (“**Presentation**”) has been prepared by Flynn Gold Limited (ABN 82 644 122 216) (“Flynn Gold” or “Company”) and is dated 18 July 2023.

SUMMARY INFORMATION

This Presentation contains summary information about the current activities of Flynn Gold and its subsidiaries as at the date of this Presentation. The information in this Presentation is of a general nature and does not purport to be complete. This Presentation does not purport to contain all the information that an investor should consider when making an investment decision nor does it contain all the information which would be required in a disclosure document or prospectus prepared in accordance with the requirements of the Corporations Act. It should be read in conjunction with Flynn Gold’s other periodic and continuous disclosure announcements lodged with the ASX, which are available at www.asx.com.au. Neither Flynn Gold nor its directors, employees or advisers give any warranties in relation to the statements and information in this Presentation.

DISCLAIMER

This presentation is for informational purposes only and does not constitute an offer to sell, or solicitation to purchase, any securities. Such Offer can be made only through proper subscription documentation and only to investors meeting strict suitability requirements. Any failure to comply with these restrictions may constitute a violation of applicable securities laws. In providing this presentation Flynn Gold Limited (“Flynn Gold”) has not considered the financial position or needs of the recipient. Persons needing advice should consult their stockbroker, bank manager, solicitor, attorney, accountant or other independent financial and legal advisors.

FORWARD LOOKING STATEMENTS

Various statements in this presentation constitute statements relating to intentions, future acts and events. Such statements are generally classified as “forward looking statements” and involve known and unknown risks, uncertainties and other important factors that could cause those future acts, events and circumstances to differ materially from what is presented or implicitly portrayed herein. Words such as “anticipates”, “expects”, “intends”, “plans”, “believes”, “seeks”, “estimates” and similar expressions are intended to identify forward-looking statements. Flynn Gold caution shareholders and prospective shareholders not to place undue reliance on these forward-looking statements, which reflect the view of Flynn Gold only as of the date of this presentation. The forward-looking statements made in this presentation relate only to events as of the date on which the statements are made.

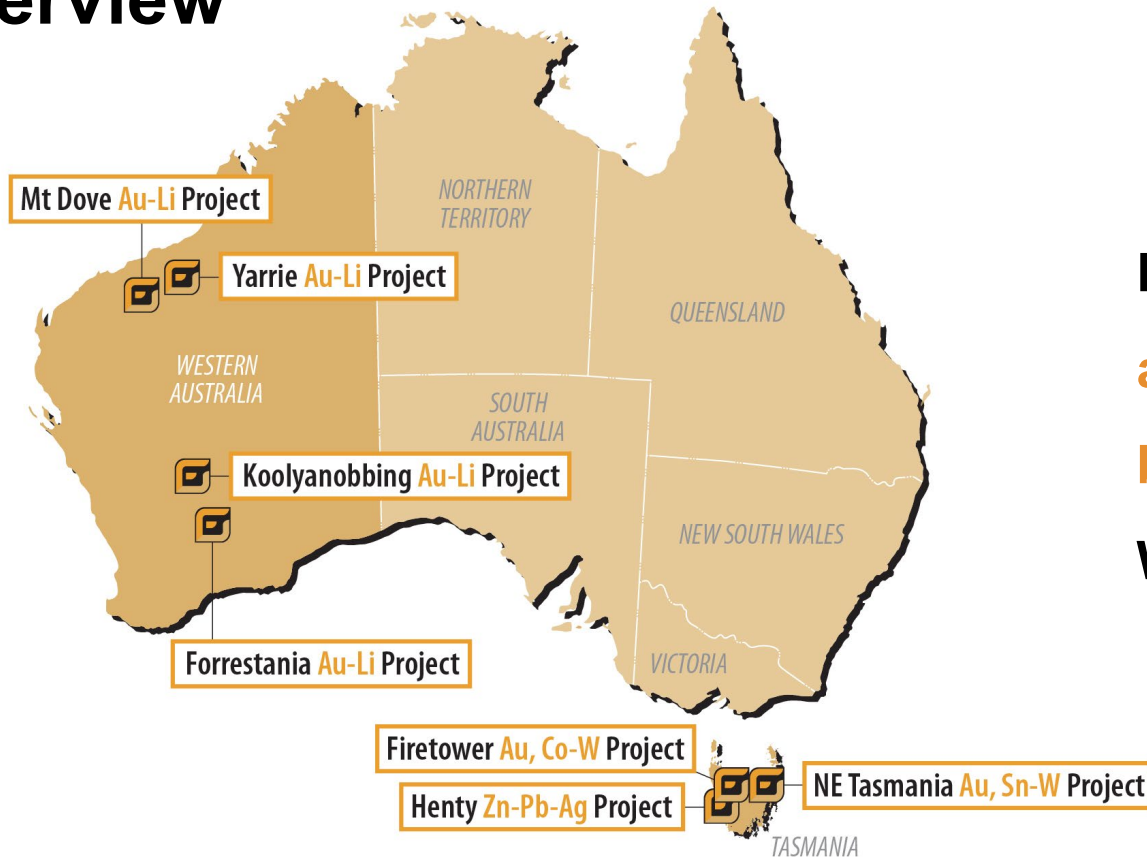
COMPETENT PERSON STATEMENT EXPLORATION RESULTS

The information in this release is an accurate representation of the available data and studies for the material mining project. The information that relates to sampling techniques and data, exploration results and geological interpretation has been compiled by Sean Westbrook who is a consultant of the Company. Sean Westbrook is a Competent Person as defined in the JORC Code (2012). Sean has sufficient experience of relevance to the styles of mineralisation and the types of deposits under consideration, and to the activities undertaken, to qualify as a Competent Person as defined in the 2012 Edition of the Joint Ore Reserves Committee (JORC) Australasian Code for Reporting of Exploration Results.

EXPLORATION RESULTS

Refer to Company Announcements for full details on Exploration Results. Flynn Gold is not aware of any new information or data that materially effects the information contained in those announcements.

Overview



Flynn Gold is focused on the **exploration and development of Australian gold and battery metals projects** in **Tasmania and Western Australia**

Western Australia

- 21 granted Exploration Licences and 5 EL applications
- 1,190 km², 100% Flynn Gold
- Pilbara – holdings close to significant gold & lithium deposits at Mt Dove and Yarrie
- Yilgarn – holdings close to world class lithium and nickel deposits at Forrestania and Koolyanobbing

Tasmania

- 12 granted Exploration Licences
- 1,475 km², 100% Flynn Gold
- Northeast Tasmania – interpreted extension of Victorian goldfields with significant gold and tin/tungsten historical mines
- Northwest Tasmania – Firetower and Henty projects with multiple gold and battery metals drill targets

Company Snapshot

Capital Structure

ASX Code	FG1
Share price: 18 th July 2023	A\$0.06
Cash @ 31 st March 2023	\$5.0m
Debt	Nil
Shares on issue	135.9m
Market Cap at \$0.06/share	\$8.1m
Enterprise Value at \$0.06/share	~\$4.0m
Options ¹	3.0m
Options ²	0.4m
Performance Rights ³	4.2m

Notes

1. Expiry June 2024, \$0.25/sh exercise price
2. Expiry Aug 2025, \$0.20/sh exercise price
3. 3 year performance rights upon meeting various vesting conditions

Shareholders (as at 30 th June 2023)	
Colin Bourke and Associates	33.6%
Directors and Management	5.4%
Lowell Resources Fund	3.7%
Top 20 Shareholders	68.7%

Directors



**Clive
Duncan**
Chair

- 4 decades with market leading big box hardware chain Bunnings Group, including as COO and company director. Harvard Program for Management development, Finance program at London Business School and is a Member of the Australian Institute of Company Directors (AICD).



**Neil
Marston**
Managing
Director & CEO

- Qualified accountant and Chartered Secretary with extensive experience in the areas of mineral exploration, capital markets, corporate governance, project management and stakeholder engagement.



**Sam
Garrett**
Technical
Director

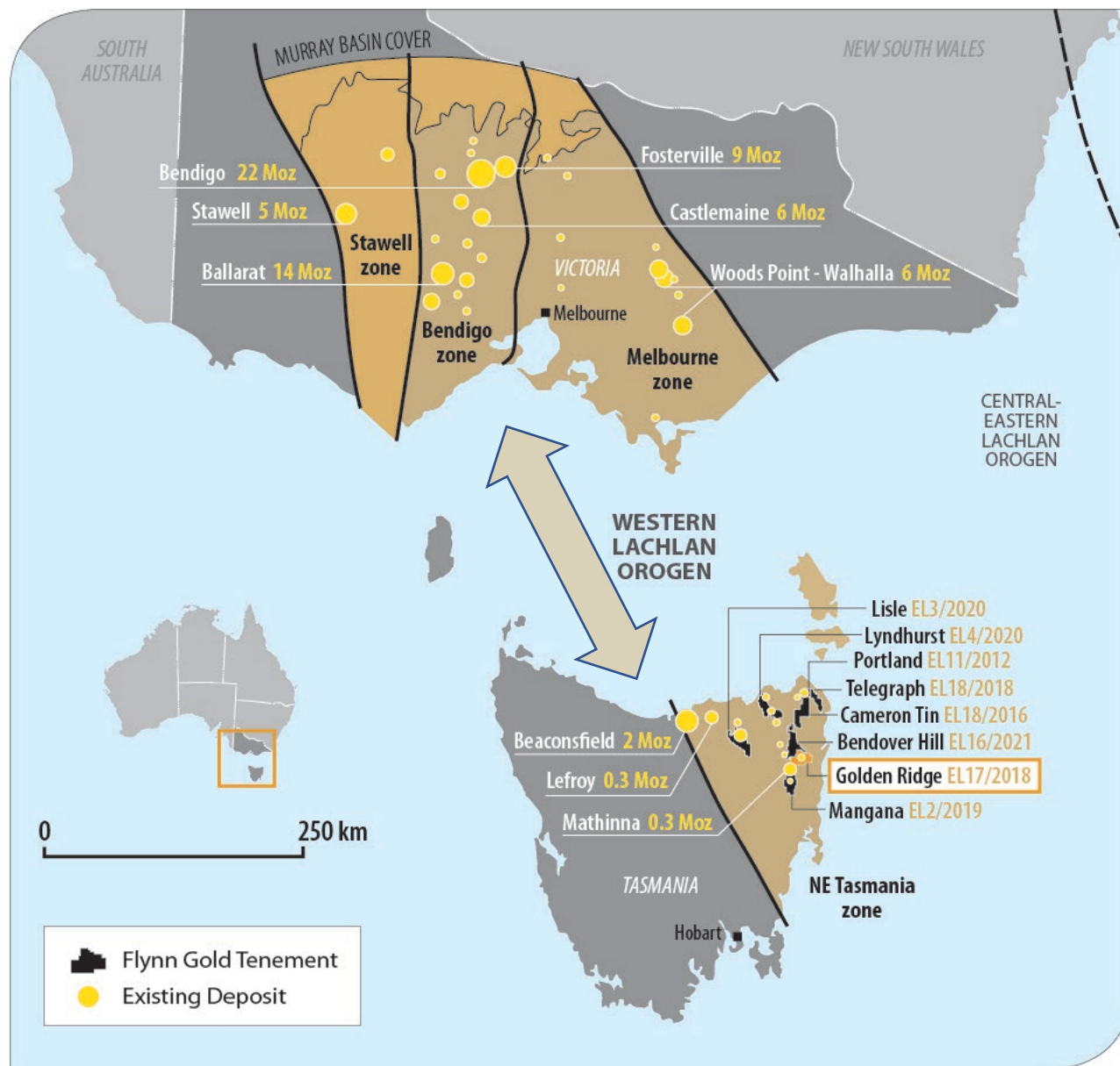
- Geologist with over 30 years of international exploration management including positions with Phelps Dodge and Cyprus Gold. Specialist in copper and gold exploration. Mt. Elliott, Havieron and Tujuh Bukit discovery credits.



**John
Forwood**
Non-Executive
Director

- Director and CIO of Lowell Resources Funds Management (LRFM). Qualified lawyer and geologist. 20 years of resources financing experience, including as CIO of the Lowell Resources Trust and Director of RMB Resources.

Northeast Tasmania



- NE Tasmania is interpreted to be part of the Western Lachlan Orogen – a **geological extension of the Victorian Goldfields**
- NE Tasmania has significant **historic high-grade gold production** – Beaconsfield Gold Mine the dominant producer (~2.0Moz @ 15g/t Au)
- FG1 has secured key under-explored tenure with excellent potential for new discoveries of high-grade gold as well as tin-tungsten

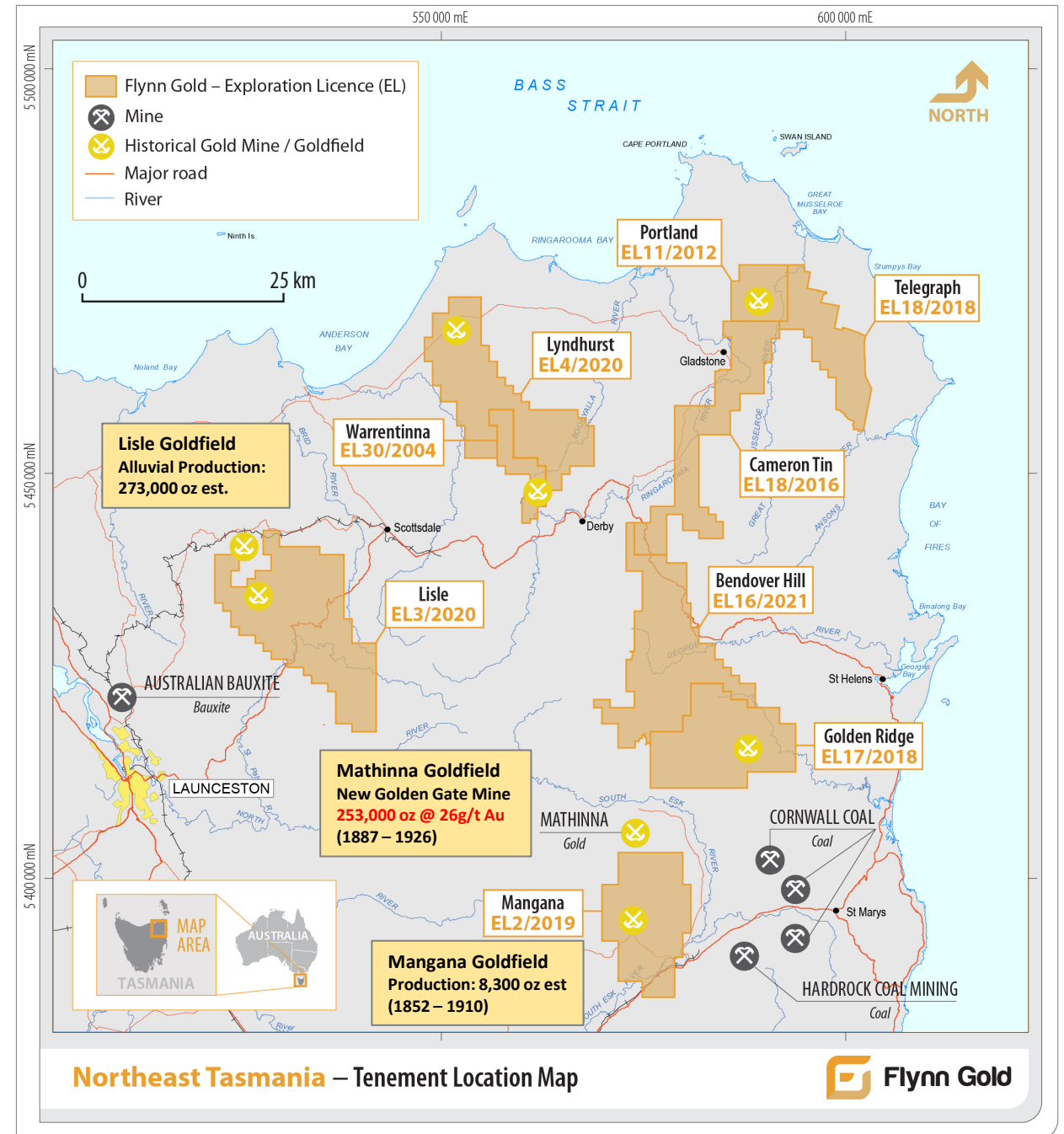
Criteria	Victoria	Northeast Tasmania
Exploration Expenditure 2021/22	\$222m¹	~\$32.8m¹
Historic Gold Production	82 Moz	2.7 Moz
Interpreted Western Lachlan Orogen	✓	✓
Orogenic & IRGS/TAG Style Au	✓	✓
Devonian Granitoids (400-370 Ma)	✓	✓
Ordovician Turbiditic Sediments	✓	✓

¹. State-wide including mine-site exploration
(Australian Bureau of Agriculture and Resource Economics Service 2021-22)

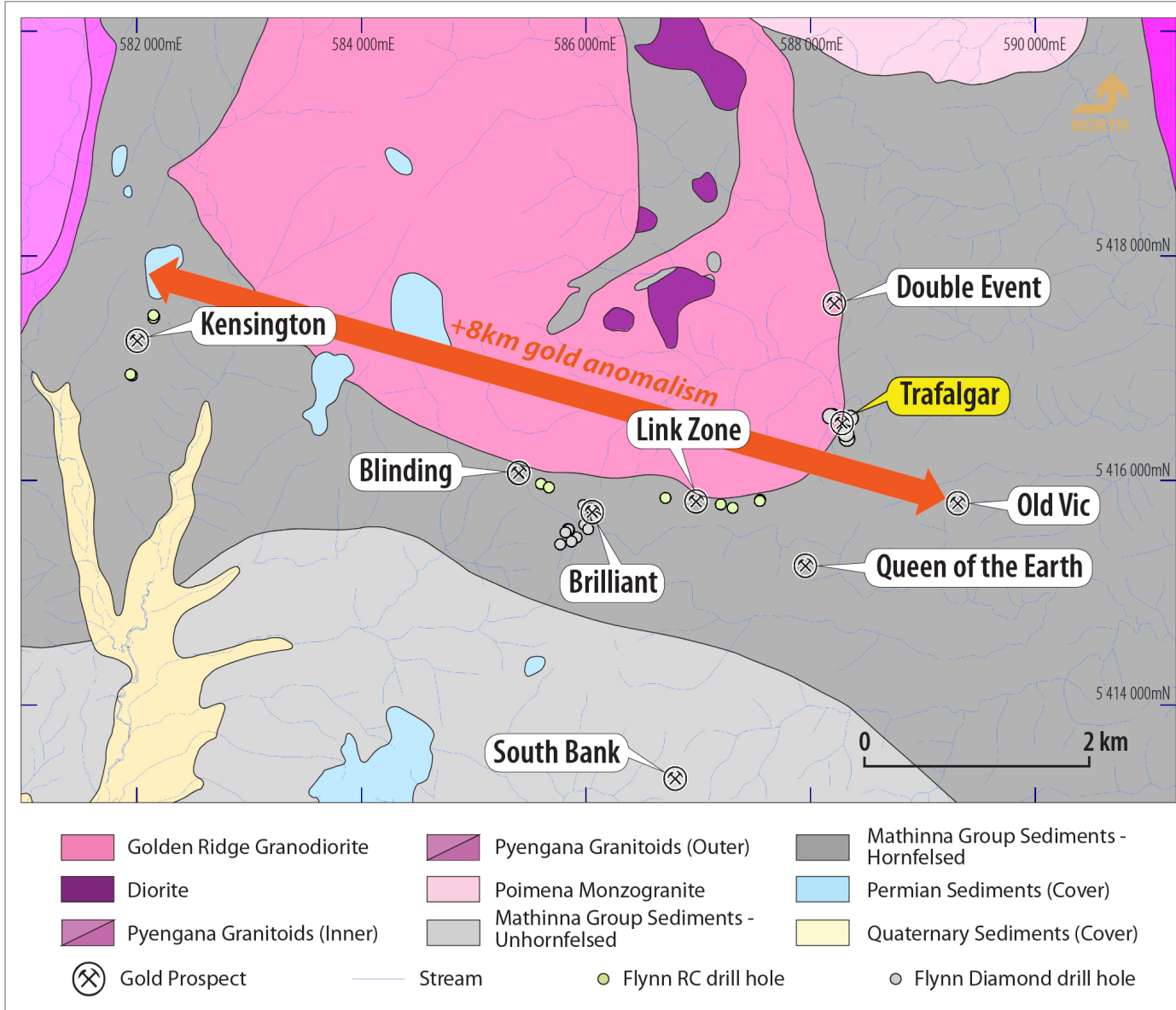
Tasmania's Gold Rush

Gold Mining History

- First payable gold found at **Mangana** in 1852
- Alluvial gold mining dominated early days – Lisle Goldfield production estimated 273,000oz Au
- Tasmania Gold Mine (Beaconsfield) established and mined to 1,200m depth producing:
 - 1877-1914: **854,600 oz @ 26.0g/t Au**
 - 1999-2012: **920,000 oz @ 10.5g/t Au**
- New Golden Gate (Mathinna Goldfield) established and mined to ~500m depth producing:
 - 1887-1926: **253,000 oz @ 26g/t Au** using cyanide leaching
- Hard rock gold production elsewhere generally limited to shallow (<100m depth) oxide/free gold zones
- Very little gold exploration since major mines closed early last century



Golden Ridge Project



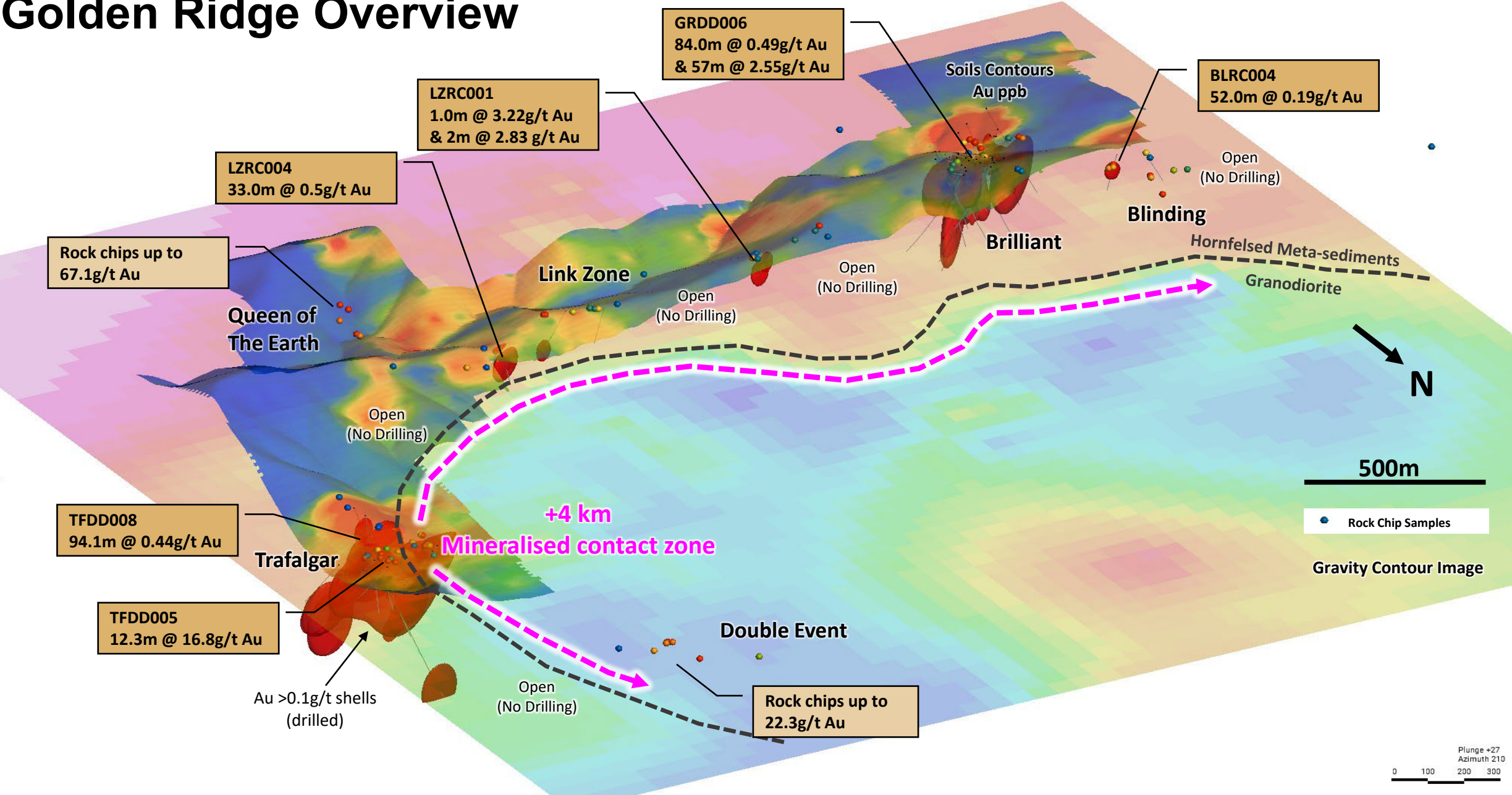
Positive Indications of a large Intrusive Related Gold System (IRGS)

- Historical shafts and adits at multiple prospects
- Significant gold anomalism near granodiorite-sediment contact (IRGS) - **8km mineralised zone**

Flynn Gold Activities

- Diamond drilling at **Brilliant** (14 holes) - **mineralised system is open along strike**
- RC drilling at Kensington, Blinding and Link Zone (12 holes) - significant gold mineralisation intersected, **confirming potential for an extensive gold mineralisation system**
- **Phase 1 Trafalgar** diamond drilling completed - exceptional drilling results recorded
- **Phase 2 Trafalgar** diamond drilling underway - testing for extensions to mineralised zones

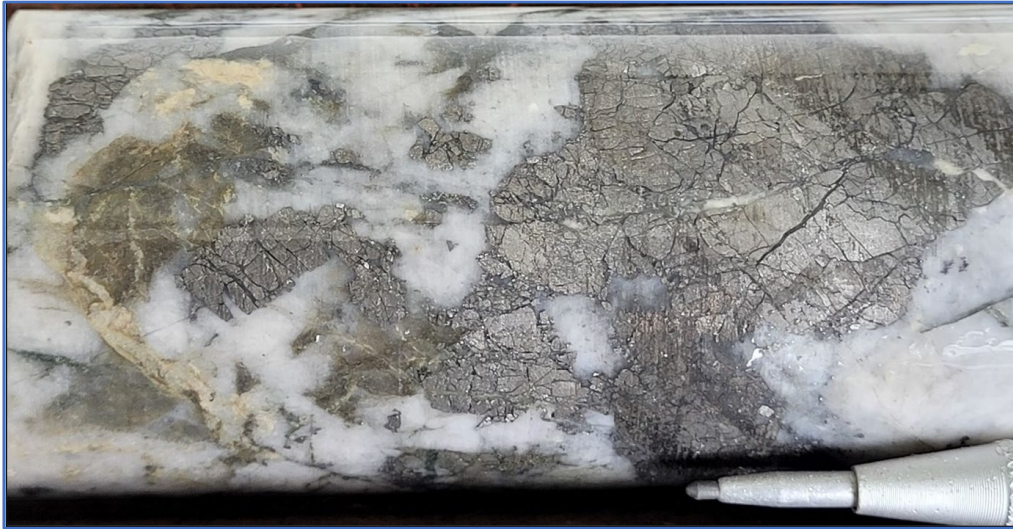
Golden Ridge Overview



Golden Ridge Project

Trafalgar Prospect

- First drilling to test across the granodiorite-sediment contact
- Multiple quartz-sulphide vein zones grading **>50g/t Au**



Quartz vein with coarse arsenopyrite in drill hole TFDD005B at 121.8m (0.6m @ 109.0g/t Au)

- Gold mineralisation occurs across **multiple zones**
- **Mineralisation over 350m E-W strike length** identified to date - open along strike and down dip

References:

¹FG1: ASX Ann. 21 September 2022

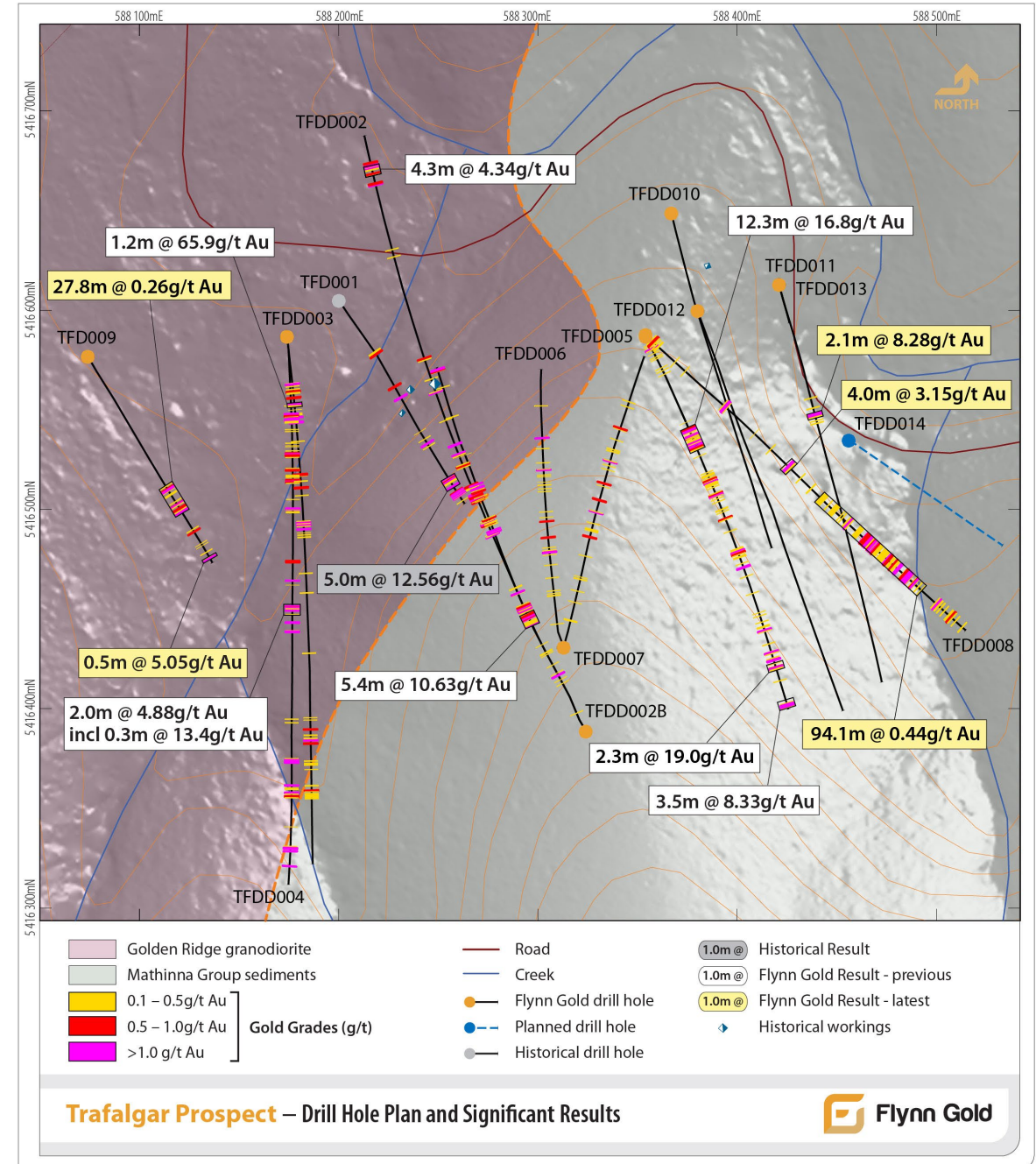
²FG1: ASX Ann. 24 October 2022

³FG1: ASX Ann. 12 December 2022

⁴FG1: ASX Ann. 19 January 2023

⁵FG1: ASX Ann. 14 February 2023

⁶FG1 ASX Ann. 11 May 2023



Golden Ridge Project

Trafalgar Prospect

- **Phase 2 drilling** - 6 holes completed or underway (TFDD009-014) and assays pending
- Aim to **increase the strike extent of the mineralisation** before any follow-up infill drilling

Other Activities

- On-going soil sampling over extensive area
- Follow-up drilling at Link Zone to confirm mineralised system – planning & permitting underway



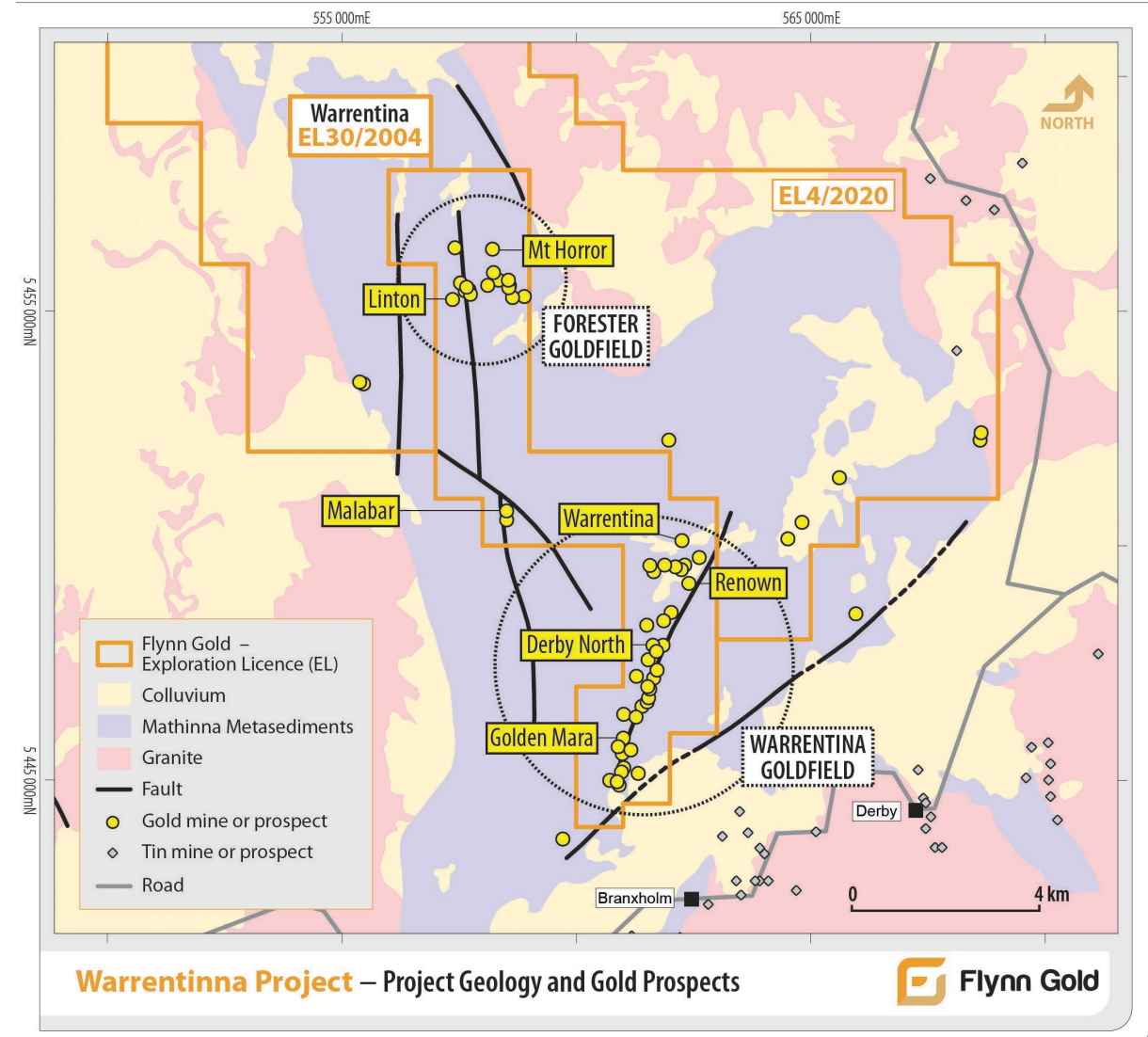
Warrentinna Gold Project

Significant new gold targets to complement Flynn's existing NE Tasmania assets

Project purchased from Greatland Gold plc in June 2023

Warrentinna Goldfield

- Gold mineralisation & old workings over 6km strike
- **Golden Mara** mine produced 3,368oz at 1 oz/tonne
- Derby North discovered by drilling in 2012
- Significant shallow gold intersected at **Derby North**:
 - **26.0m @ 2.3g/t Au** from 5m,
 - **21.7m @ 3.3g/t Au** from 9.3m,
 - **11.7m @ 2.8g/t Au** from 115m, and
 - **43.0m @ 1.5g/t Au** from 10m
- Potential for JORC Mineral Resource at Derby North with additional drilling
- Multiple other drill targets generated from soil sampling
- EDGI grant (co-funding up to \$70,000) for drilling at Golden Mara



Northwest Tasmania

Strategic holding in a world-class mining region

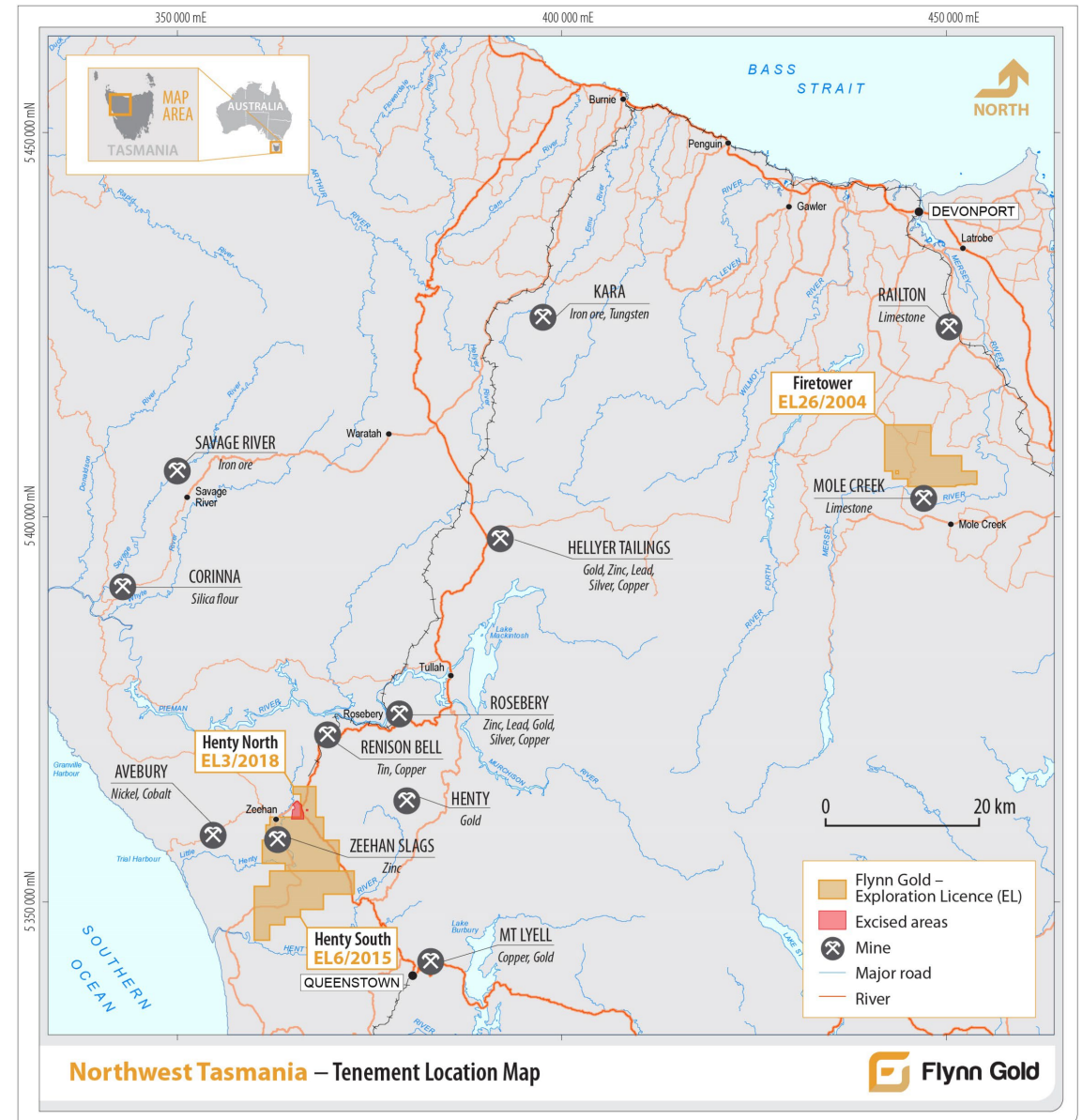
- Established mining region with world-class base metal deposits

Firetower Project

- Located within eastern parts of **Mount Read Volcanics**
- Multiple targets identified with gold and battery metals potential (cobalt-tungsten, copper, lead/zinc)

Henty Project

- Strategic tenement position over a highly prospective district-scale carbonate-hosted Zn-Pb-Ag system
- Close to infrastructure, including existing zinc/lead concentrate producer (Rosebery mine)
- Multiple targets identified with **high-grade Zinc/Lead/Silver potential**
- Pipeline of greenfields to resource definition stage prospects



Northwest Tasmania – Firetower Project

Advanced Gold plus VHMS Battery Metals Project

Firetower Prospect

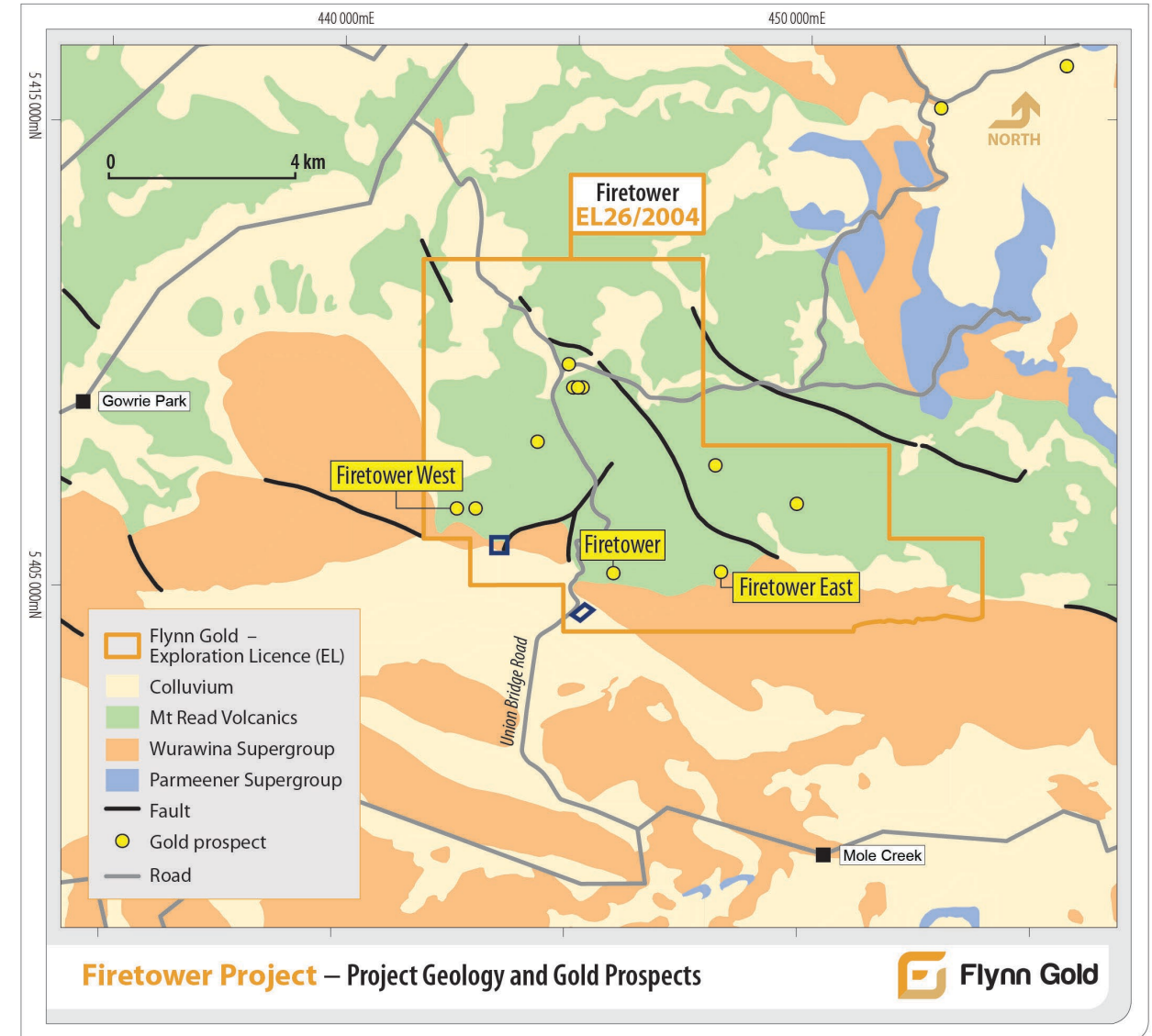
- Previous drilling delineated gold mineralisation over 350m along strike and up to 150m depth, remaining open at depth and along strike,
- Significant intercepts include **17.0m @ 5.37g/t Au** from 7m
- Anomalous cobalt (up to 0.57% Co) and tungsten (up to 0.73% W) mineralisation appears associated with the gold but has not been systematically evaluated by previous explorers
- **Early potential for JORC compliant Mineral Resource**

Firetower East Prospect

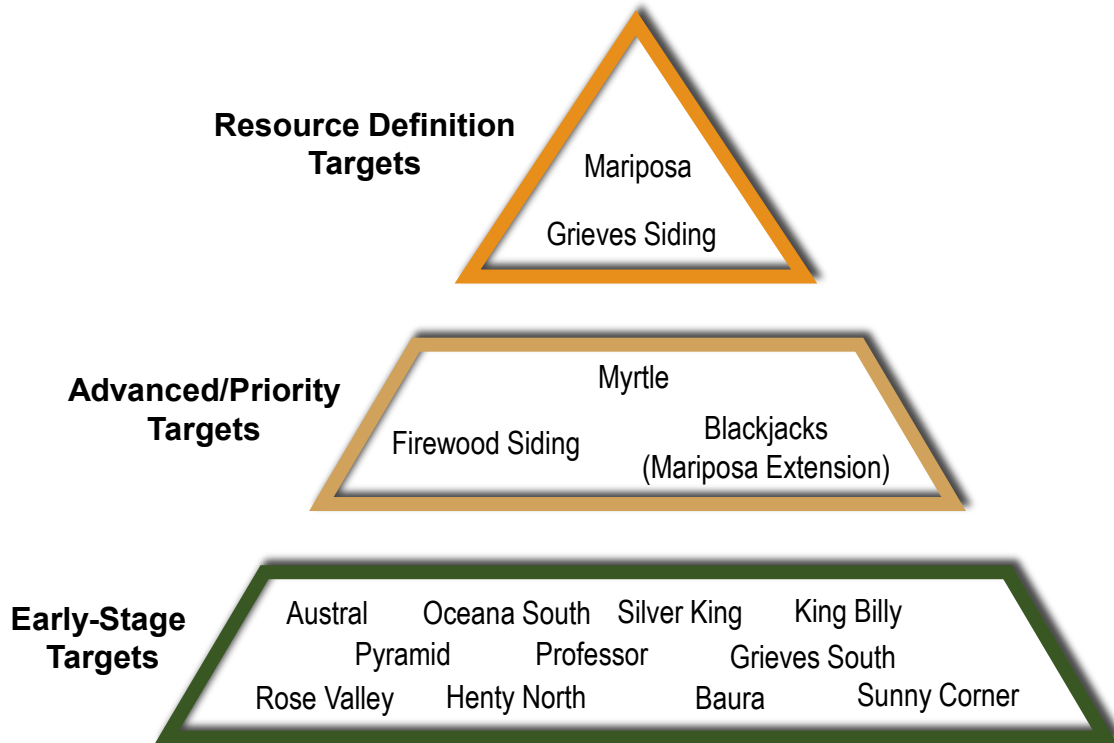
- **Potential for a VHMS system** with initial drilling intersecting gold, silver, lead and zinc

Firetower West Prospect

- Mineralised system - **up to 1.34% Cu & 2.6g/t Ag reported**
- EDGI co-funding grant for drilling



Northwest Tasmania – Henty Zinc Project



Mariposa:

- Near-Surface stratiform mineralisation drilled over 800m strike (open).
- DM47: **17.9m @ 17.6% Zn+Pb and 101g/t Ag** from 4.1m.
- Resource definition ready.

Grieves Siding:

- Near-surface stratiform mineralisation drilled over 800m strike (open).
- ZG107: **13.2m @ 11.5% Zn** from 124m, and **8.4m @ 22.4% Zn+Pb** from 154.5m.
- Deep drilling indicates extensive system with large discovery potential.

Myrtle:

- Near-surface high-grade mineralisation with limited drill testing.
- ZM87: **6 m @ 12.4% Zn+Pb** from 12m. Hole stopped in sulphide mineralisation.
- ZM1008: **3.0 m @ 6.7% Zn** from 24m, and **6.0 m @ 7.2% Zn+Pb** from 56.4 m.

Exploration Activities & Indicative Newsflow

Project	SEP 23 Q	DEC 23 Q	MAR 24 Q	JUN 24 Q
<i>Tasmania</i>				
Golden Ridge	Drilling - Trafalgar	Drilling – TBC	Follow-up Activities	Follow-up Activities
Warrentinna	Permitting	Drilling – Derby North	Assays & Evaluation	Drilling – Golden Mara (EDGI)
Firetower	Permitting	Drilling – Firetower	Assays & Evaluation	Follow-up Activities
Henty	Permitting		Drilling – Mariposa/Grieves	Assays & Evaluation
Mangana	Permitting		Planning	Drilling – Golden Entrance
<i>Western Australia</i>				
Mt Dove	Sampling/Geophysics	Assays & Evaluation		Heritage Surveys Drilling - aircore
Forrestania		Sampling/Geophysics	Assays & Evaluation	Heritage Surveys Drilling - aircore

Investment Highlights

- Pipeline of high-grade gold prospects in NE Tasmania
- Golden Ridge Project
 - High-grade Trafalgar gold discovery open in all directions.
 - Excellent potential for additional high-grade gold deposits along an 8km trend
- Significant portfolio of battery metals exploration projects in WA – excellent addresses near world class deposits, set for field exploration
- Experienced Board, Management and Technical team
- Well-funded to maintain exploration activities

Golden Ridge





Neil Marston

Managing Director & Chief Executive Officer

+61 3 9692 7222

neil@flynnngold.com.au

www.flynnngold.com.au

Victoria Humphries / Ben Creagh

Media & Investor Relations

+61 (0) 431 151 676 / +61 (0) 417 464 233

victoria@nwrcommunications.com.au

benc@nwrcommunications.com.au

For more information, please contact us



Flynn Gold

ASX: FG1