

WA's Fastest Growing Multi Asset Lithium Explorer



The Right Projects at the Right Time

RIU Explorers Conference Presentation

4 May 2022

ASX:GL1

Important Notice and Disclaimer

- These presentation materials and the accompanying verbal presentation (together, the **Presentation Materials**) have been prepared by Global Lithium Resources Limited (**Global Lithium** or **Company**). By receiving the Presentation Materials, you acknowledge and represent to the Company that you have read, understood and accepted the terms of this disclaimer.
- You must read this important notice before you attempt to access the Presentation Materials. The information on this page is not part of the Presentation Materials. If you do not understand it, you should consult your professional adviser without delay.

NOT AN OFFER

- These Presentation Materials are for information purposes only. The Presentation Materials do not comprise a prospectus, product disclosure statement or other offering document under Australian law (and will not be lodged with the Australian Securities and Investments Commission) or any other law.
- The Presentation Materials also do not constitute or form part of any invitation, offer for sale or subscription or any solicitation for any offer to buy or subscribe for any securities nor shall they or any part of them form the basis of or be relied upon in connection therewith or act as any inducement to enter into any contract or commitment with respect to securities. In particular, these Presentation Materials do not constitute an offer to sell or a solicitation to buy, securities in the United States of America.

NOT INVESTMENT ADVICE

- The Presentation Materials are not investment or financial product advice (nor tax, accounting or legal advice) and are not intended to be used for the basis of making an investment decision. Recipients should obtain their own advice before making any investment decision.

SUMMARY INFORMATION

- The Presentation Materials do not purport to be all inclusive or to contain all information about the Company or any of the assets, current or future, of the Company.
- The Presentation Materials contain summary information about the Company and its activities which is current as at the date of the Presentation Materials. The information in the Presentation Materials is of a general nature and does not purport to contain all the information which a prospective investor may require in evaluating a possible investment in the Company or that would be required in a prospectus or product disclosure statement or other offering document prepared in accordance with the requirements of Australian law or the laws of any other jurisdiction, including the United States of America.
- The Company does not undertake to provide any additional or updated information whether as a result of new information, future events or results or otherwise.

FORWARD LOOKING STATEMENTS

- Certain statements contained in the Presentation Materials, including information as to the future financial or operating performance of the Company and its business operations, are forward looking statements. Such forward looking statements:

- are necessarily based upon a number of estimates and assumptions that, while considered reasonable by the Company, are inherently subject to significant technical, business, economic, competitive, political and social uncertainties and contingencies;
- involve known and unknown risks and uncertainties that could cause actual events or results to differ materially from estimated or anticipated events or results reflected in such forward looking statements; and
- may include, among other things, statements regarding estimates and assumptions in respect of prices, costs, results and capital expenditure, and are or may be based on assumptions and estimates related to future technical, economic, market, political, social and other conditions.
- The Company disclaims any intent or obligation to publicly update any forward-looking statements, whether as a result of new information, future events or results or otherwise.
- The words “believe”, “expect”, “anticipate”, “indicate”, “contemplate”, “target”, “plan”, “intends”, “continue”, “budget”, “estimate”, “may”, “will”, “schedule” and similar expressions identify forward looking statements.
- All forward looking statements contained in the Presentation Materials are qualified by the foregoing cautionary statements. Recipients are cautioned that forward looking statements are not guarantees of future performance and accordingly recipients are cautioned not to put undue reliance on forward looking statements due to the inherent uncertainty therein.

NO LIABILITY

- The Company has prepared the Presentation Materials based on information available to it at the time of preparation. No representation or warranty, express or implied, is made as to the fairness, accuracy or completeness of the information, opinions and conclusions contained in the Presentation Materials. To the maximum extent permitted by law, the Company, its related bodies corporate (as that term is defined in the *Corporations Act 2001* (Cth) (**Corporations Act**)) and the officers, directors, employees, advisers and agents of those entities do not accept any responsibility or liability including, without limitation, any liability arising from fault or negligence on the part of any person, for any loss arising from the use of the Presentation Materials or its contents or otherwise arising in connection with it.

COMPLIANCE STATEMENTS

- The Company confirms that it is not aware of any new information or data that materially affects the information in the relevant market announcements, and that the form and context in which the Competent Persons findings are presented have not been materially modified from the original announcements.
- Where the Company refers to Mineral Resources in this announcement (referencing previous releases made to the ASX), it confirms that it is not aware of any new information or data that materially affects the information included in that announcement and all material assumptions and technical parameters underpinning the Mineral Resource estimate with that announcement continue to apply and have not materially changed. The Company confirms that the form and context in which the Competent Persons findings are presented have not materially changed from the original announcement.
- Information on historical exploration results and Mineral Resources for the MBLP presented in this Announcement, together with JORC Table 1 information, is contained in the Independent Geologists Report within the Company's Prospectus dated 22 March 2021, which was released as an announcement on 4 May 2021.

Overview

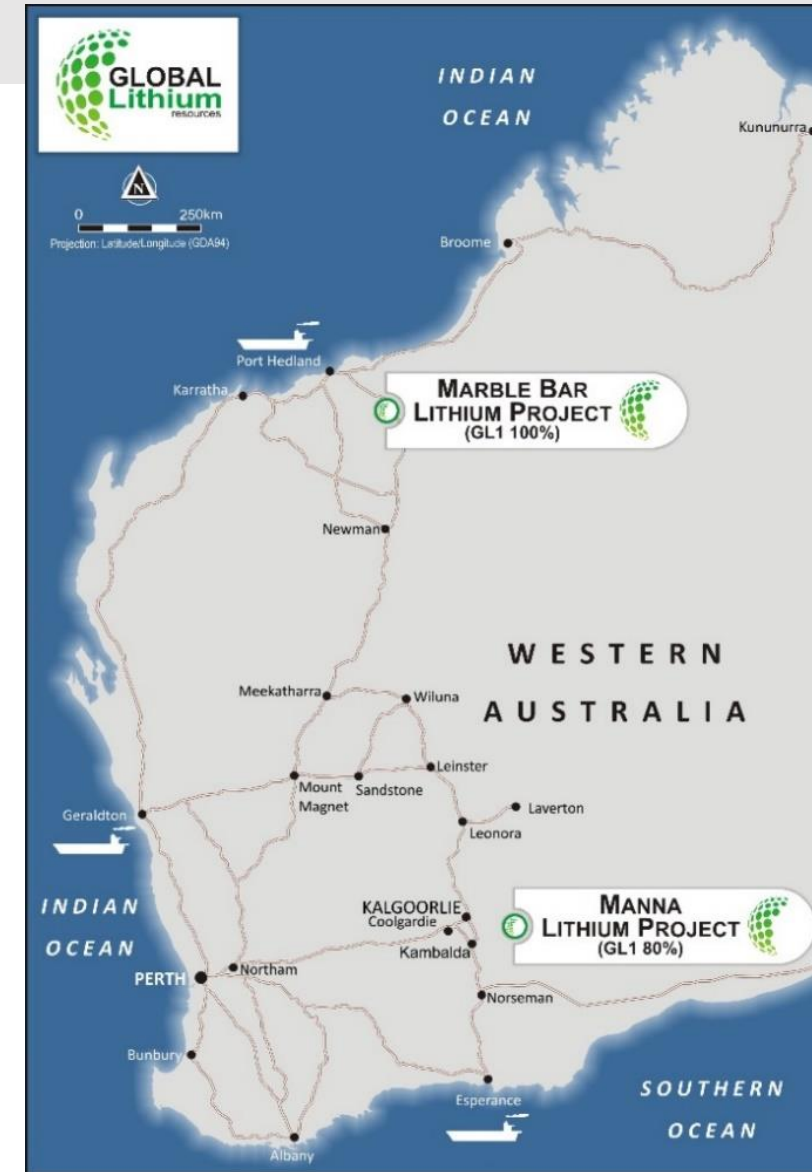
- ❑ Two highly prospective advanced lithium projects in the tier-1 mining jurisdiction of Western Australia with a combined maiden **Inferred Mineral Resource of 18.4Mt @ 1.04% Li₂O (100% basis)**
- ❑ Marble Bar Lithium Project (**MBLP**) (**GL1 100%**)
 - ❑ Located in the infrastructure rich Pilbara, excellent access to services
 - ❑ Similar geological setting as nearby Pilgangoora¹ & Wodgina² deposits
 - ❑ Maiden **Inferred Mineral Resource of 10.5Mt @ 1.0% Li₂O³**
- ❑ Manna Lithium Project (**Manna**) (**GL1 80%**)
 - ❑ Located in the Goldfields, acquired by Global Lithium in December 2021
 - ❑ Maiden **Inferred Mineral Resource of 9.9Mt @ 1.14% Li₂O (100% basis)⁴**
- ❑ Active large scale exploration programs
 - ❑ 60,000m drilling at MBLP commenced Q1 CY22
 - ❑ 20,000m drilling at Manna commencing Q2 CY22

1. Owned by Pilbara Minerals (ASX: PLS).

2. Owned by the MARBL JV, 60% Albemarle, 40% Mineral Resources (ASX: MIN).

3. Refer ASX release titled "Prospectus", 4 May 2021.

4. Refer ASX release titled "9.9 million tonnes @ 1.14% Li₂O and 49 Ta₂O₅ ppm MAIDEN MANNA PROJECT LITHIUM RESOURCE", 17 February 2022



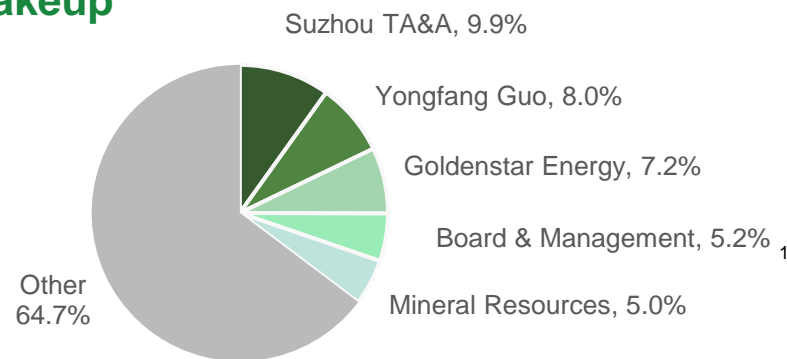
GL1 At A Glance

Corporate Structure (subject to completion of Capital Raising)

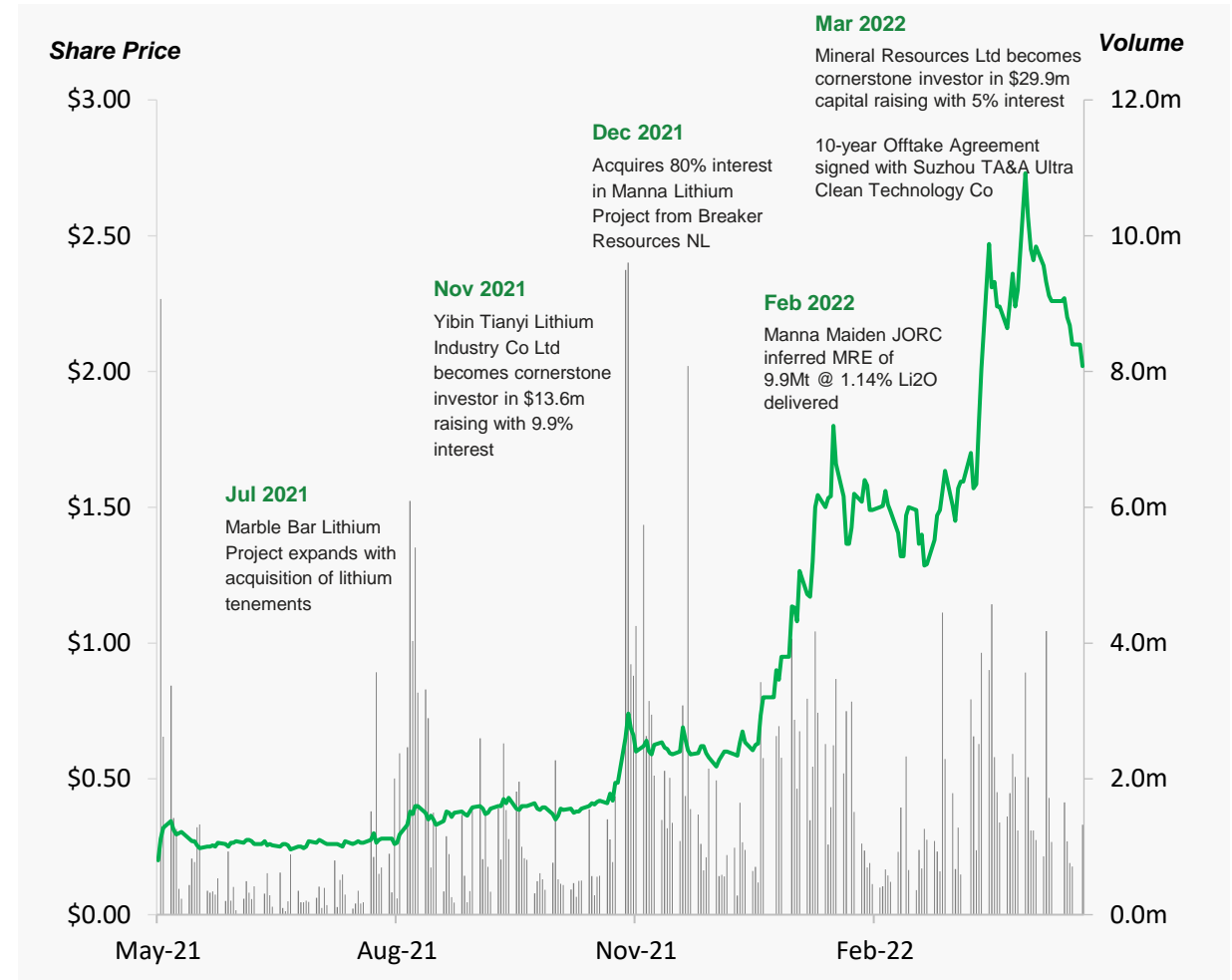
Share Price (26 April 2022)	\$2.02
Shares ¹	201.1m
Market Cap. (undiluted)	\$406.3m
Cash²	\$37.9m
Options (Nov 2024, \$1.00 strike)	4.8m
Options (May 2025, 30c strike)	4.8m
Performance Rights ^{3,4}	5.4m

Shareholder Makeup

(Subject to completion of Capital Raising)



- Includes 0.5m shares to be issued to Directors (subject to shareholder approval);
- \$37.9m comprised of: 1) \$37.2m cash at 31 March 2022; plus 2) \$0.7m to be raised from Directors subject to the receipt of shareholder approval (see ASX Announcement dated 14 March 2022);
- Various Terms;
- Includes 1.4m Performance Rights to be issued subject to shareholder approval, see ASX announcements dated 13 January 2022 & 14 February 2022



Board & Management



**Warrick
Hazeldine**

**Non-
Executive
Chair**

Founder & NED of Cannings Purple, NED ChemX (ASX:CMX), 20 years capital markets experience, Director for Surfing WA



**Ron
Mitchell**

**Executive
Director**

Chairman of the LME Lithium Committee, Former Sales Director of Tianqi Lithium & Talison Lithium, 11 years experience in the lithium industry



**Greg
Lilleyman**

**Non-
Executive
Director**

Former Fortescue Metals and Rio Tinto executive, 30 years of international experience in the mining sector



**Dr Dianmin
Chen**

**Non-
Executive
Director**

Founder of Global Lithium, 35 years' experience in metals mining and capital markets



**Hayley
Lawrance**

**Non-Executive
Director**

Commercial lawyer, Director and company secretary for +22 years focusing on ESG and approvals, Chair of WestCycle



**Kevin
Hart**

**CFO & Company
Secretary**

Chartered accountant with +30 years experience in accounting and administration of ASX listed public companies. Principal of Endeavour Corporate.



**Stuart
Peterson**

Head of Geology

Specialist Exploration Geologist with 16 years experience in Australia and offshore, Member of the Australasian Institute of Mining and Metallurgy



**Nicole
Stein**

**Community
Relations**

An experienced community relations and strategic communications professional, 20 years living and working in regional Western Australia.



Geology Team

- Global Lithium's internal geology team has been expanded.
- Recent appointments:
 - Project Geologist, Logan Barber
 - Hillary Mutika, Field Operations Coordinator
- Geology Team will work across both the MBLP and Manna projects.



Demand - EV's Are Now A Global Mega Trend



China monthly EV sales¹

↑862%

since January 2020

Global EV sales

6.6m

In 2021²

31%

of the world's cars
will be electric by
2040³

500m

EV's expected to be
on the road by 2040⁴

1. CAAM – China Association of Automobile Manufacturers

2. International Energy Agency Jan 2022

3. S&P Global Market Intelligence

4. Wallenius Wilhelmsen Auto Market Analysts

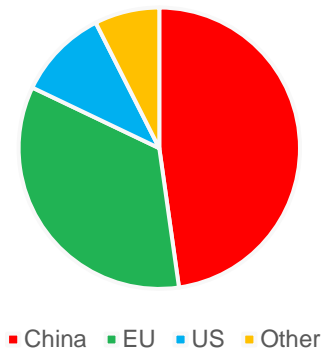
Demand - Four Discrete EV Jurisdictions



Demand = Nth Hemisphere

Supply = Sth Hemisphere

2021 Global EV sales (~6.6 mill units)



1. Source: IEA



Lithium Rechargeable Battery Applications

More than just an EV story

Supply – Why Western Australia and Why Spodumene?

Why Western Australia?

- A. WA supplies ~50%¹ of the world's total lithium in the form of spodumene concentrate and is the most recognised and well branded lithium jurisdiction in the world
- B. WA is stable politically, geologically, has great infrastructure, is close to the major battery markets and has a sophisticated and skilled technical and commercial workforce
- C. The global EV value chain is now turning its attention to the next wave of supply additions and WA is in the box seat

Why Spodumene?

- 1. Speed to Market
 - ▶ WA has done it before many times over
 - ▶ First tonnes typically in market 2 – 3 years post FID
- 2. Quality
 - ▶ Lithium chemicals produced from spodumene concentrate are high quality and consistent



1. Datamyne global trade statistics data 2022.

Partnership with Suzhou TA&A Ultra Clean Technology Co., Ltd (Suzhou TA&A)

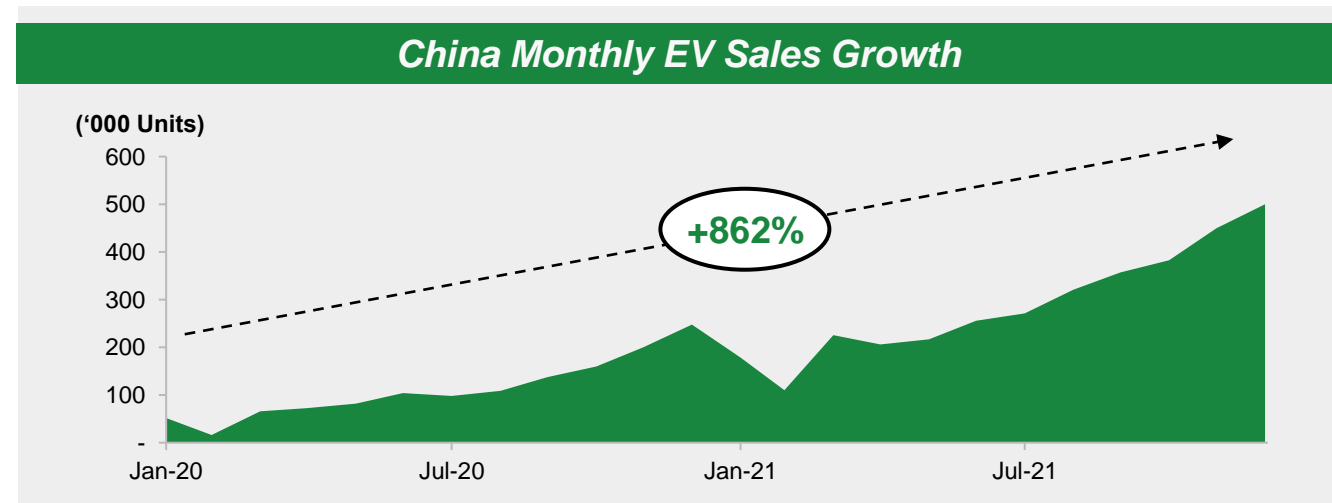
- 10-year Strategic Offtake Agreement with Suzhou TA&A for at least 30% of spodumene concentrate produced from Global Lithium's operations at market prices¹
- Suzhou TA&A is an associate of CATL Group, the industry leading upstream lithium chemical producer and largest producer of EV batteries
- Sector & ESG momentum driving prices
 - Exponential take up of EV's causing supply shortages in lithium
 - Lithium market surging – spodumene concentrate prices up +700% YoY²

CATL

Access to downstream lithium expertise

1. Refer ASX release titled "10 Year Strategic Concentrate Offtake Agreement", 3 March 2022

2. S&P Global Platts Metals Daily reports 6% Spodumene concentrate FOB Australia at US\$5,000/t on 18 March 2022.



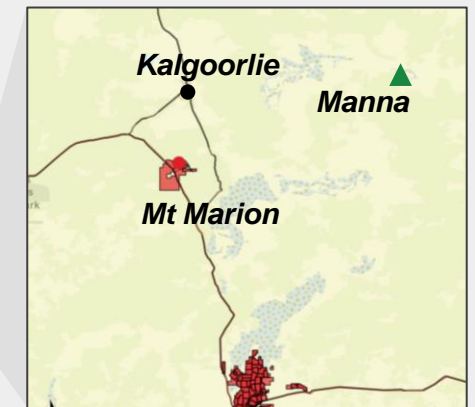
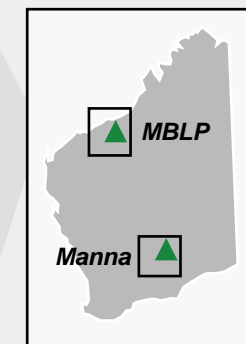
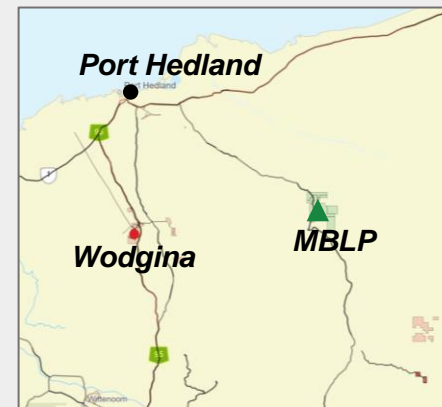
Partnership with Mineral Resources Limited (ASX:MIN)

- Mineral Resources Limited (**MinRes**) recently announced as strategic partner after taking 5.0% interest in Global Lithium¹
- MinRes has an unrivalled track record in successfully bringing operations into production quickly, processing of hard rock lithium ores and downstream processing
- Proximity of MBLP and Manna to existing MinRes operations presents range of potential regional synergies



Access to upstream lithium expertise

Strategic Positioning



1. Refer ASX release titled "\$30m Placement Attracts Mineral Resources as an Investor", 14 March 2022

Sustainability: Building Capacity in ESG Reporting & Funding Partners



ENVIRONMENT

Commitment to minimise ground disturbance, emissions and water usage

- Regulatory compliance as a minimum
- Rehabilitation of activities
- Sticking within defined boundaries
- Investigating our carbon footprint



SOCIAL

Engage local suppliers and recognition of Traditional Owners

- Consultation and discussions with traditional owners, including regarding protection measures for the Two Sisters hills
- Use of local businesses: civil, accommodation, media, services and meals
- Regular engagement with the community, including update sessions



GOVERNANCE

Integrate best practice social standards and environmental into corporate governance principles

- Board committed to establishing GL1 as a reputable, modern exploration and development company with strong ESG principles



Marble Bar Lithium Project (100% GL1)

Marble Bar Lithium Project (MBLP) - Highly prospective geological setting

Geology

Archer Deposit

Significant Upside

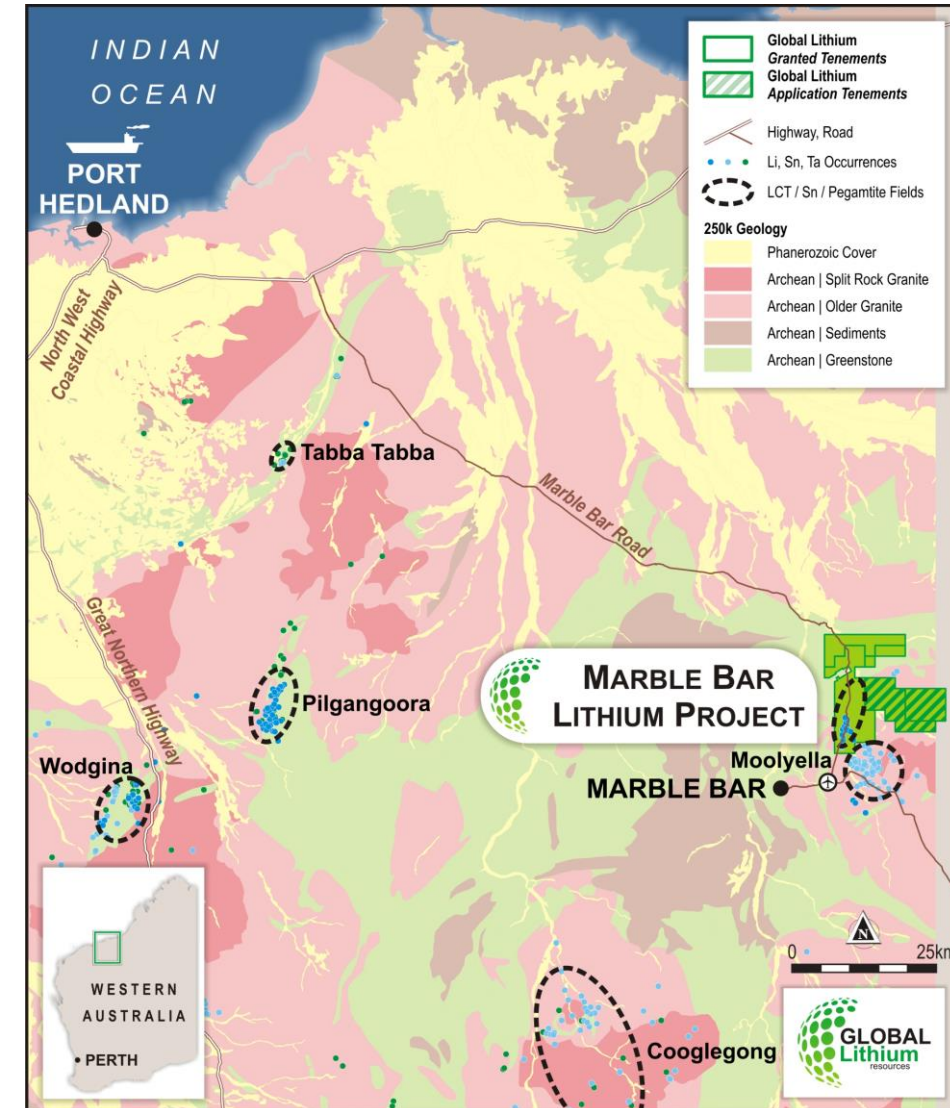
Infrastructure Rich

- Spodumene bearing pegmatite hosted in greenstone and granite contact
- Demonstrates similar geological settings to the Pilgangoora¹ and Wodgina² deposits
- **Maiden Inferred Mineral Resource of 10.5Mt @ 1.0% Li₂O³**
- Exploration focused on growth beyond Archer
- +27,000m RC drilling completed to date
- Additional 60,000m program commenced in February 2022
- More than 25km greenstone strike in highly prospective area
- Lithium mineralisation in drilling identified over 15km
- Tier 1 lithium mining jurisdiction
- Sealed road through tenement area
- 150km south-east of Port Hedland

1. Owned by Pilbara Minerals (ASX: PLS).

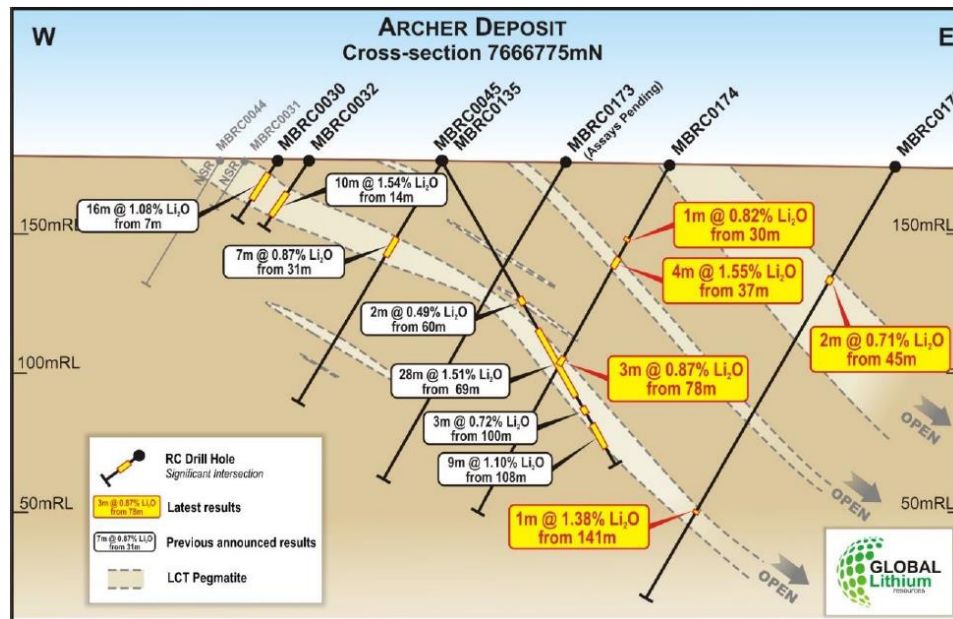
2. Owned by the MARBL JV, 60% Albemarle, 40% Mineral Resources (ASX: MIN).

3. Refer ASX release titled "Prospectus", 4 May 2021.

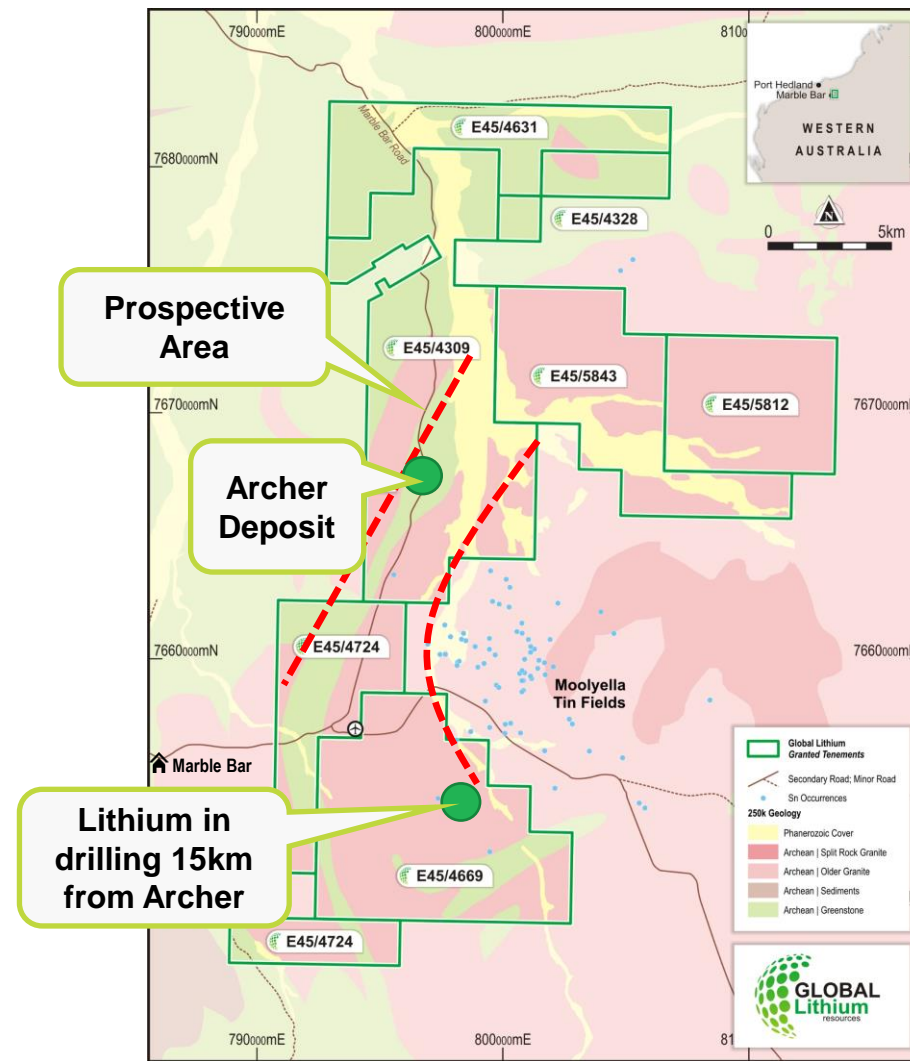


The Marble Bar Lithium Project – 2021 Results Demonstrate Upside Potential

Previous RC drilling programs¹ have delivered excellent results, confirming potential to extend along strike and at depth at MBLP



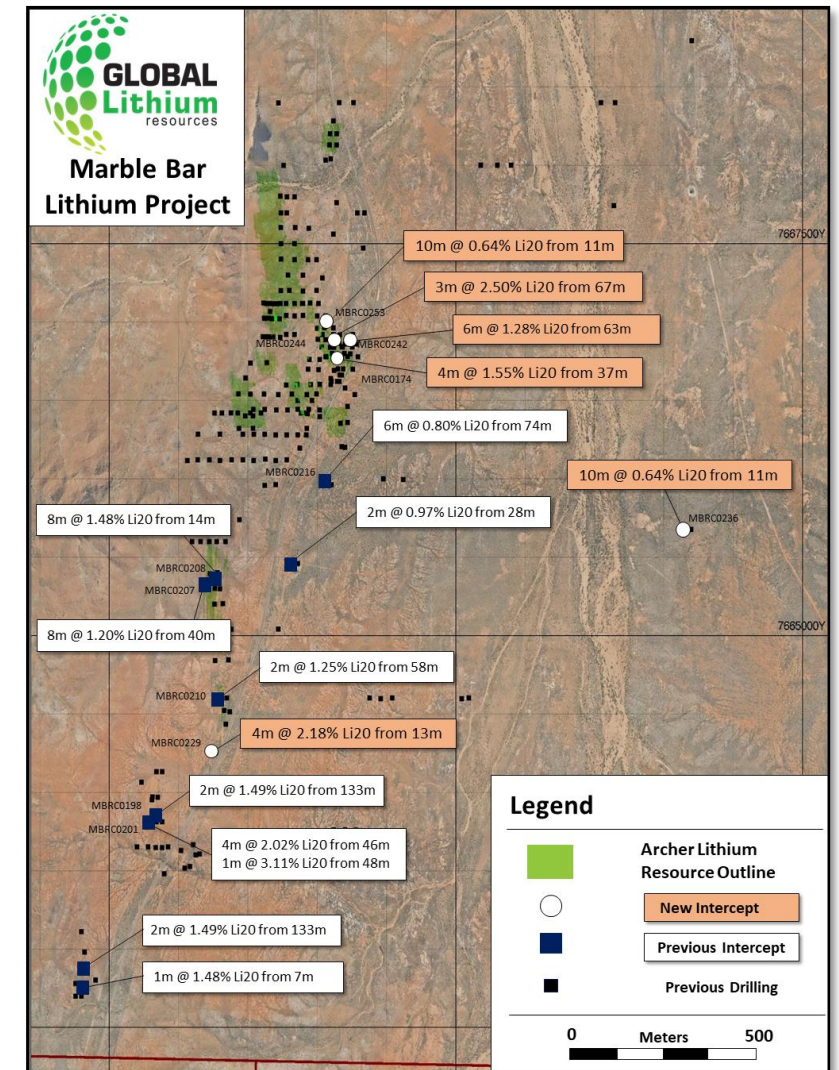
1. Refer ASX release titled "Positive Lithium Assays", 25 November 2021 & ASX release titled "Positive Lithium Assays Results Continue", 21 December 2021

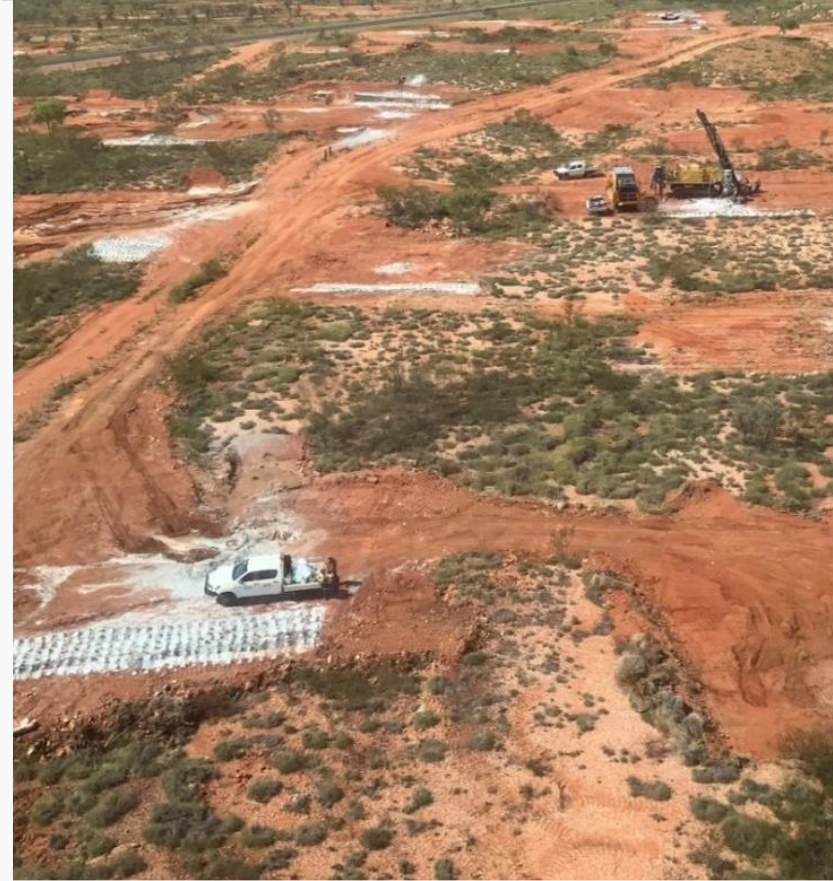


MBLP – Operational Update

- **Highest grade lithium assays delivered to date¹**
 - Significant high grade lithium assay results continue from recent drilling campaigns at the MBLP
 - **3m @ 2.5% Li₂O and 32ppm Ta₂O₅ from 67m including 1m @ 4.1% Li₂O**
 - **4m @ 2.18% Li₂O and 33ppm Ta₂O₅ from 13m**
 - **6m @ 1.28% Li₂O and 63ppm Ta₂O₅ from 58m including 1m @ 3.5% Li₂O from 58m**
 - Intercepts demonstrate the ongoing success of the planning and targeting undertaken by Global Lithium and CSA Global and further enhancing the potential of the MBLP.

1. Refer ASX release titled "Highest Grade Lithium Assays Delivered to Date at Marble Bar Lithium Project", 2 May 2022.





Pictures of Progress - MBLP



Pictures of Progress - MBLP



Manna Lithium Project (80% GL1)

Manna Lithium Project

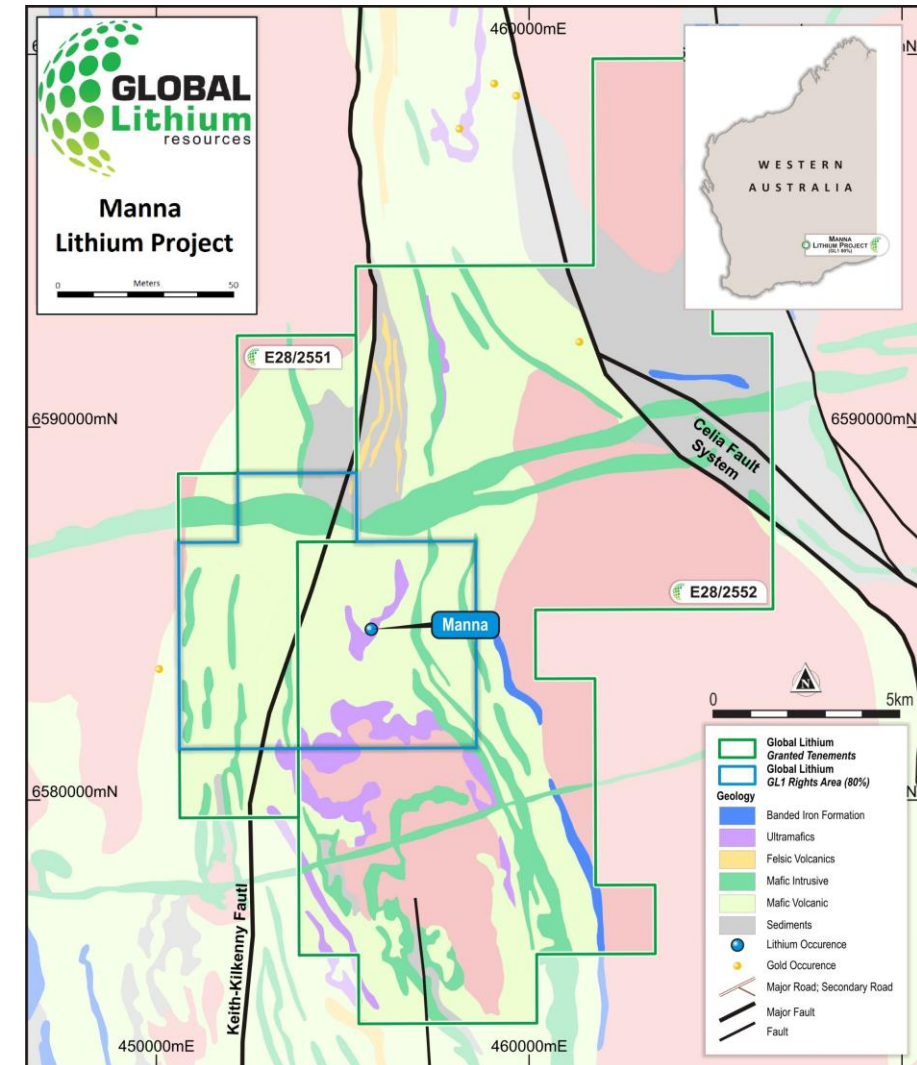
Geology

Manna Deposit

Significant Upside

Infrastructure Rich

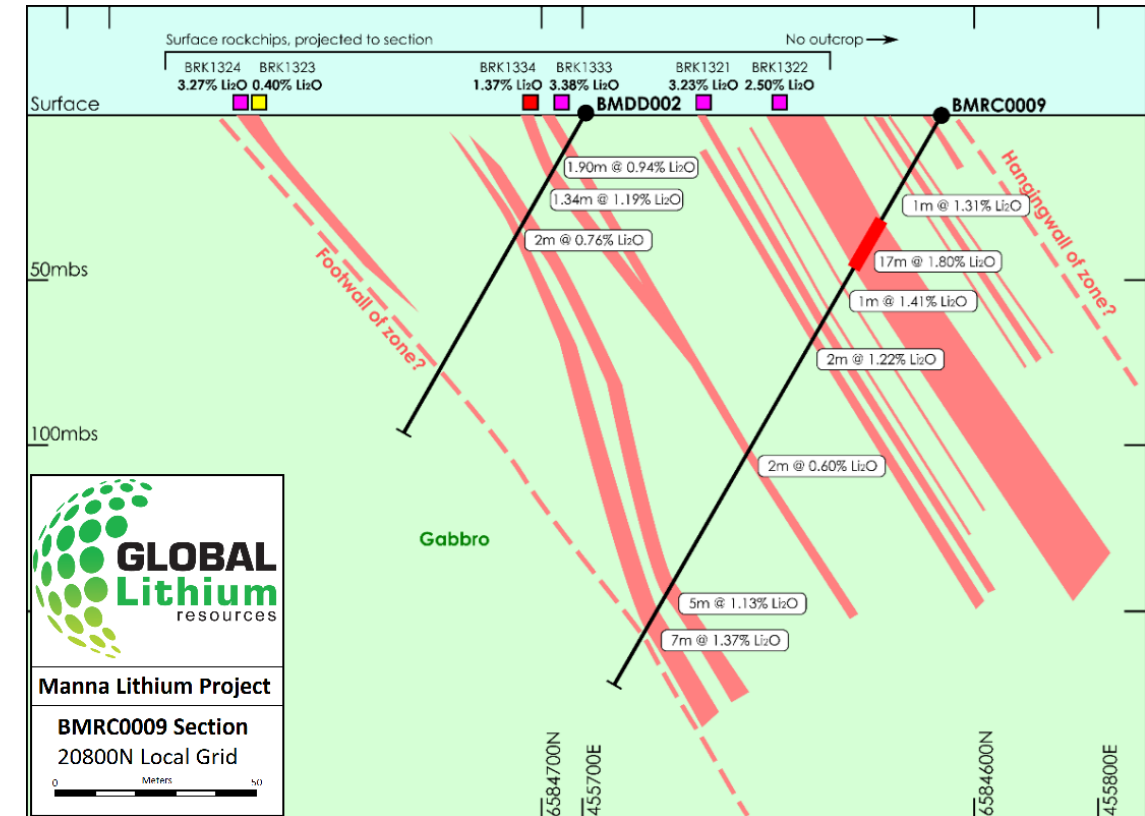
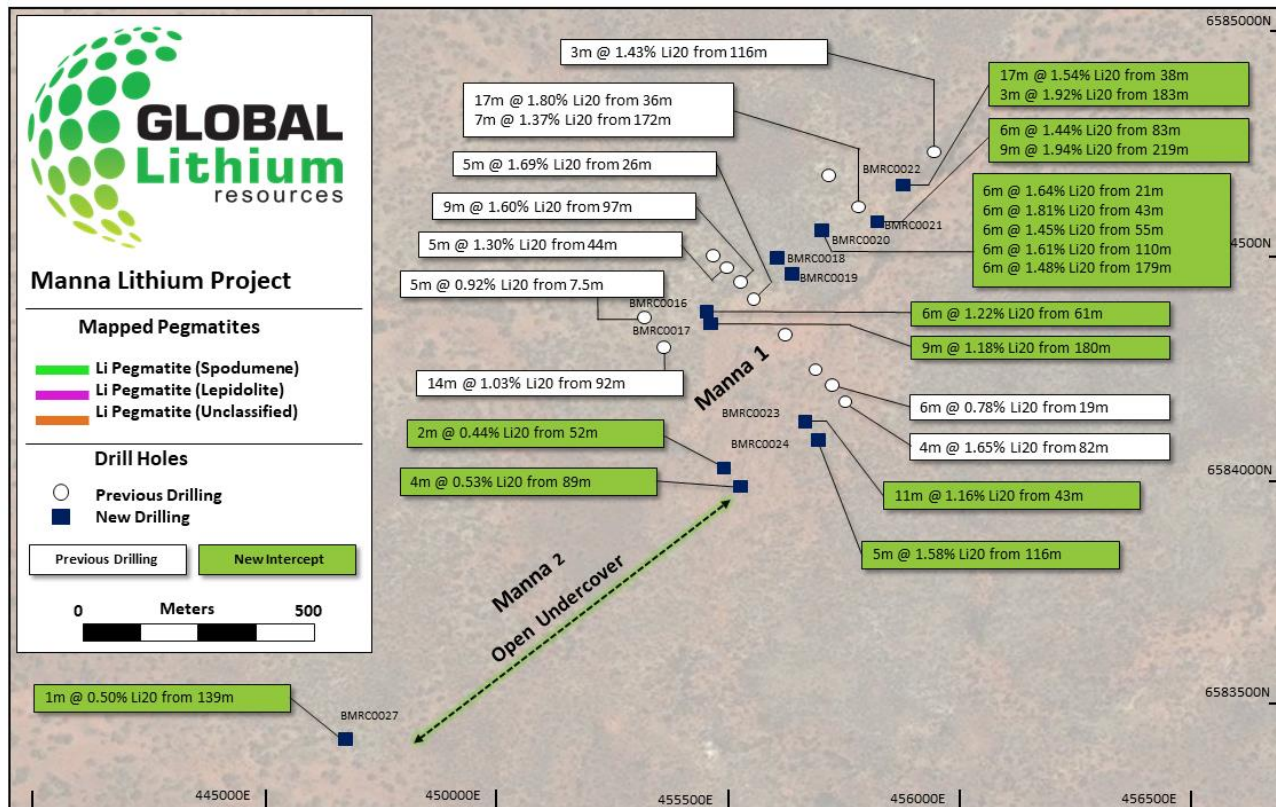
- Outcropping spodumene bearing pegmatite
- Individual pegmatite dykes up to 17 meters wide
- **Maiden Inferred Mineral Resource of 9.9Mt @ 1.14% Li₂O (100% basis)¹**
- Mineral Resource defined by just 3,636m of drilling at shallow depths
- Significant exploration upside within 5.0km x 1.5m anomalous area centered on the main outcrop
- 14,000m RC drilling program commencing Q2 2022
- 6,000m diamond drilling program commencing Q3 2022
- Tier 1 lithium mining jurisdiction
- 100km east of Kalgoorlie
- 450km north of Esperance Port



1. Refer ASX release titled "9.9 million tonnes @ 1.14% Li₂O and 49 Ta₂O₅ ppm MAIDEN MANNA PROJECT LITHIUM RESOURCE", 17 February 2022.

Manna Lithium Project - Thick Pegmatite Widths Over Large Area of Outcrop

750m x 130m main area of outcrop ("Manna 1") with individual pegmatite dykes up to 17 meters wide and little weathering



Cross-section through – BMRC0009 – BMDD002

Manna Lithium Project – Operational Update

■ Drilling Approvals

- Program of Work (POW) has been approved
- This covers 14,000m Resource Expansion RC drilling
- 6,000m Diamond Core Metallurgical drilling

■ Operational Requirements (JV)

- Reporting and Operational procedures being finalised with JV partner
- JV Committee formed and meeting quarterly

■ Setup ready to Drill

- Mobilization of the camp and other logistical requirements have commenced
- Drilling on track to commence Q2 2022
- Additional Geological and Field Technical staff acquired



Sample picture of proposed camp at Manna



Summary

Building Momentum – Significant news flow and the runway ahead

Marble Bar Lithium Project

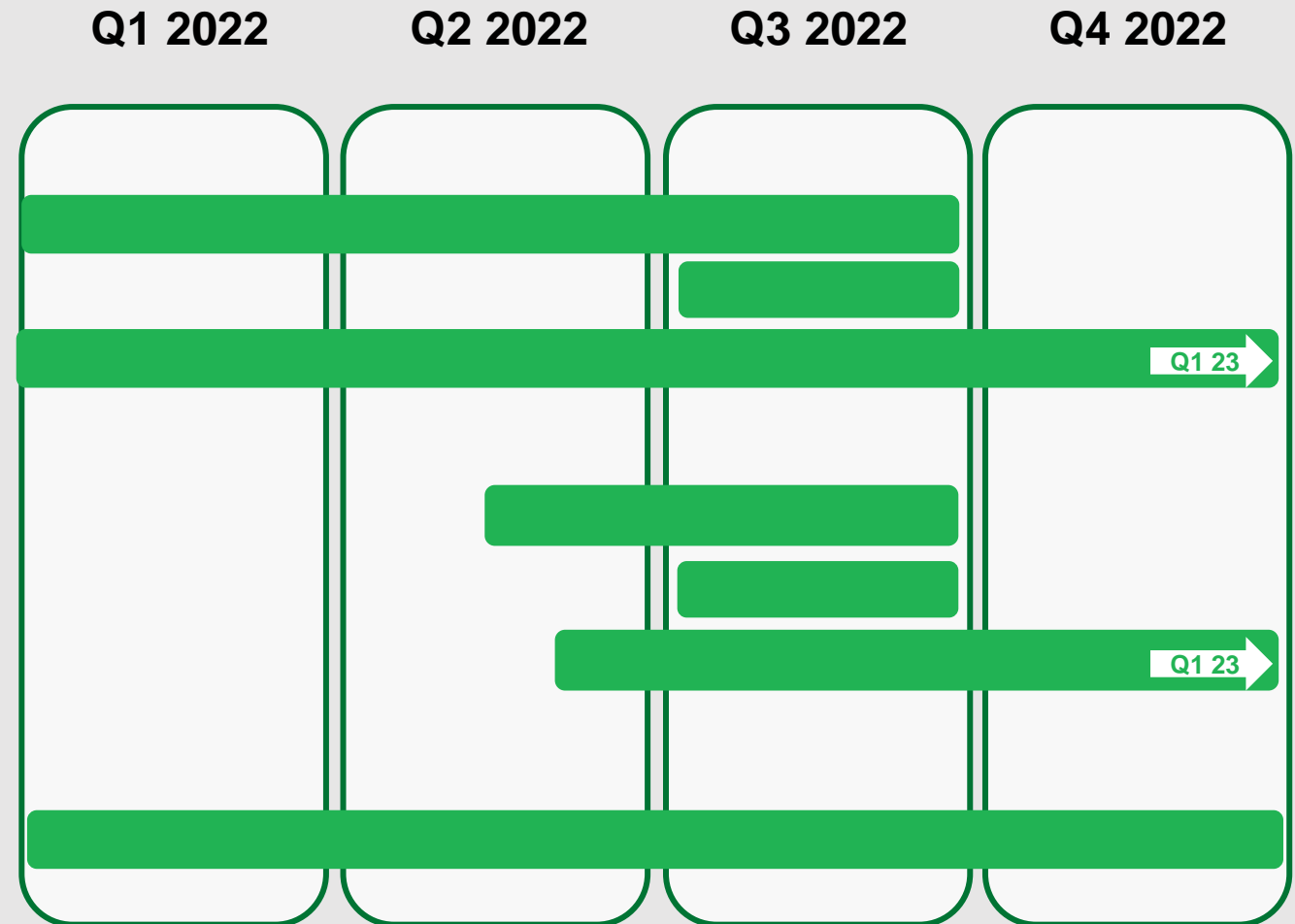
- 60,000m RC drilling program
- Diamond drilling
- Assays and metallurgical testing

Manna Lithium Project

- 20,000m RC drilling program
- 6,000m Diamond drilling
- Assays and metallurgical testing

Global Lithium Resources

- Environmental Baseline Studies & Aboriginal Heritage Surveys across MBLP & Manna



Note: The timetable and exploration program program are indicative and subject to change.

Growing WA-Focused Multi Asset Lithium Explorer



Two highly prospective lithium projects in tier-1 jurisdiction of Western Australia



Attributable inferred Mineral Resources of 18.4Mt @ 1.06% Li_2O with clear growth potential



Aggressive exploration programs at both the MBLP and Manna planned for 2022



Access to world-class infrastructure



Strong team driven by ESG fundamentals



Strong pipeline of news flow expected over next 12-18 months

Purpose & Values



OUR PURPOSE

Empowering people to power the planet

People | Power | Planet

OUR VALUES

SAFETY

The standard you walk past is the standard you accept.

OWN IT

We do what we say we will do.

SUSTAINABILITY

We do the right thing while providing responsible returns to people and the planet.

INNOVATION

We empower people to innovate for the better.

TEAMWORK

We all win when we work together with a can-do mindset.

Thank You



Contact Us

RON MITCHELL

Executive Director Markets & Growth

+61 8 6103 7488

info@globallithium.com.au

VICTORIA HUMPHRIES

Media and Investor Relations

+61 (0) 431 151 676

victoria@nwrcommunications.com.au

ASX:GL1

in <https://au.linkedin.com/company/global-lithium-resources>

🐦 @Global_Lithium

Subscribe to our mailing list at:
www.globallithium.com.au

