

14 June 2023

## Drilling Underway at Marble Bar Lithium Project

### Key Highlights

- Up to 20,000m of exploration drilling underway at MBLP
- Heritage surveys completed across Pegmatite Corridor 2 and Twin Veins targets at the Marble Bar Lithium Project (**MBLP**)
- Expanding the lithium resource at MBLP is a key focus of this year's exploration campaign
- Ground IP program at Twin Veins Gold Project due to commence in June 2023

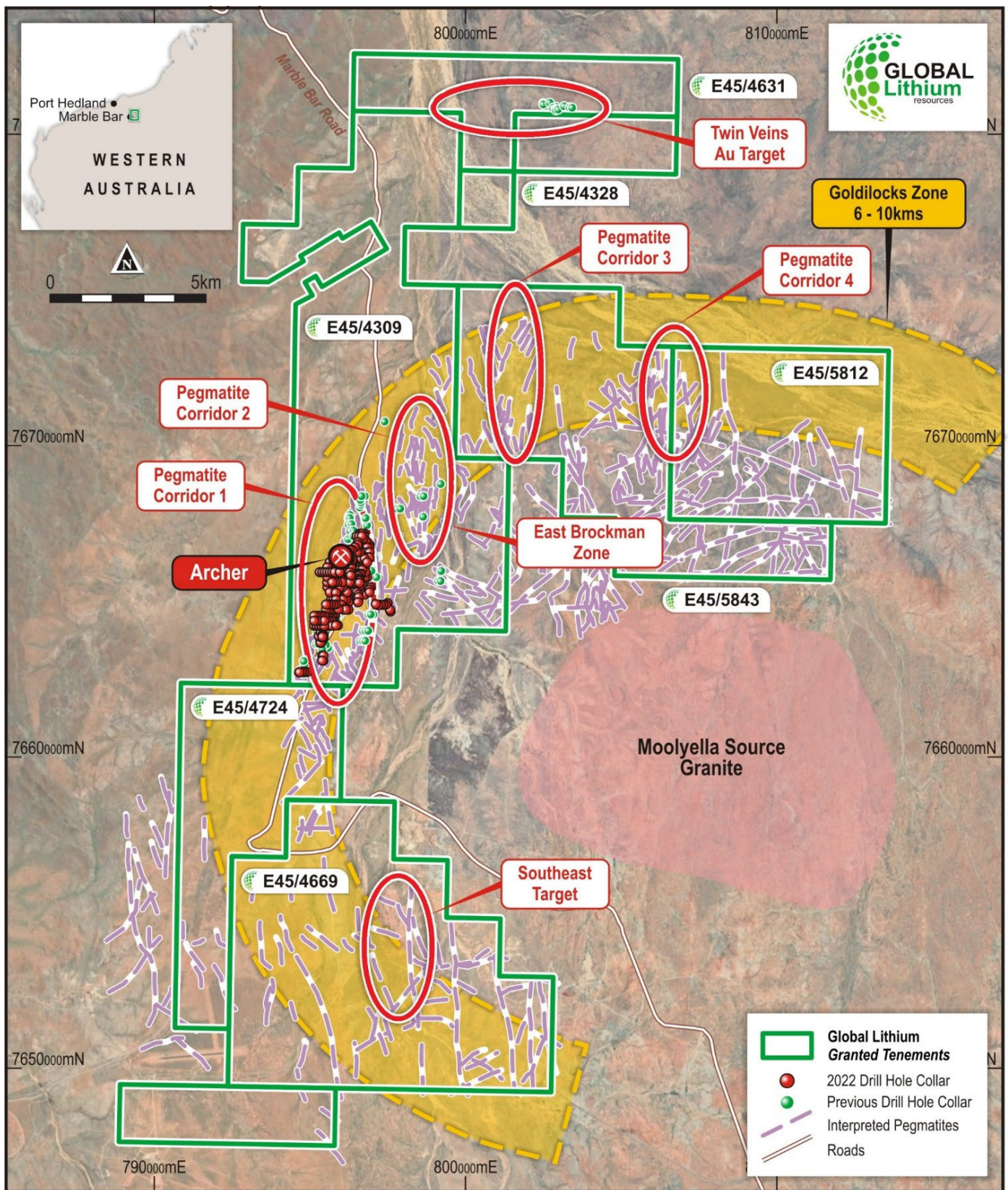
Established multi-asset West Australian Lithium company, Global Lithium Resources Limited (**ASX: GL1**, "**Global Lithium**" or "**the Company**") is pleased to announce it has commenced CY2023 exploration activities across its 100% owned Marble Bar Lithium Project (**MBLP**) in Western Australia.

MBLP has demonstrated there are multiple prospective lithium bearing corridors potentially as large as the current Archer resource area still to be explored. This year's exploration programs are based on findings from the CY2022 program with up to 20,000m of drilling to be used to explore the lithium and gold targets across MBLP.

### Two-Stage Exploration Strategy

Firstly, exploration drilling will continue to test and expand known lithium mineralised areas and prospective lithium corridors that were identified in the CY2022 exploration program. These lithium corridors are spread out along a prospective strike length of 25km and up to 16,000m of RC drilling has been planned to explore the lithium bearing potential of these areas with provisions in place to extend this program further if required, based on results.

Secondary, a Reverse Circulation (RC) drilling program of up to 4,000m will be completed on the Twin Veins Gold and base metal anomaly 13km to the north of the Archer Lithium Deposit. The drilling will commence once the Dipole Dipole Induced Polarisation (DDIP) Electromagnetic survey has been completed. This DDIP survey will highlight any chargeable anomalies that will be the subject of this year's targeted exploration program.



**Figure 1.** Showing the large scale of the MLP and the prospective corridors and drill targets

## Global Lithium General Manager Exploration, Stuart Peterson commented,

*“I am pleased GL1 has commenced the CY2023 exploration program at the 100% owned Marble Bar Lithium Project. We have only explored about 6km of the projected 25km lithium prospective strike length, so I believe that MBLP could hold additional lithium discoveries as we progress exploration further. Also, being able to explore the potential of the Twin Veins gold and base metal anomaly in this year’s program is very exciting and I look forward to providing regular updates as results become available.”*



**Figure 2.** Profile Drilling, Rig 1 setup to start drilling at the Marble Bar Lithium Project.

Approved by the board of Global Lithium Resources Limited.

For more information:

**Ron Mitchell**

*Managing Director*

[info@globallithium.com.au](mailto:info@globallithium.com.au)

+61 8 6103 7488

**Victoria Humphries**

*Media & Investor Relations*

[victoria@nwrcommunications.com.au](mailto:victoria@nwrcommunications.com.au)

+61 (0) 431 151 676

## Global Lithium – Resource Statement

Project Name	Category	Million Tonnes (Mt)	Li <sub>2</sub> O%	Ta <sub>2</sub> O <sub>5</sub> ppm
<b>Marble Bar</b>	<i>Indicated</i>	3.8	0.97	53
	<i>Inferred</i>	14.2	1.01	50
	<b>Subtotal</b>	<b>18.0</b>	<b>1.00</b>	<b>51</b>
<b>Manna</b>	<i>Indicated</i>	18.5	1.03	45
	<i>Inferred</i>	14.2	0.97	43
	<b>Subtotal</b>	<b>32.7</b>	<b>1.00</b>	<b>44</b>
<b>Combined Total</b>		<b>50.7</b>	<b>1.00</b>	<b>46</b>

Table 1. Global Lithium resource statement.

1. Refer ASX announcement “GL1 DELIVERS TRANSFORMATIVE 50.7 Mt LITHIUM RESOURCE BASE” from 15 December 2022

### About Global Lithium

Global Lithium Resources Limited (ASX:GL1, Global Lithium) is a diversified West Australian focussed mining exploration company with multiple assets in key lithium branded jurisdictions with a primary focus on the 100%-owned Marble Bar Lithium Project (MBLP) in the Pilbara region and the Manna Lithium Project in the Goldfields, Western Australia.

Global Lithium has now defined a total Inferred and Indicated Mineral Resource of 50.7Mt @ 1.0% Li<sub>2</sub>O at its MBLP and Manna Lithium projects, confirming Global Lithium as a significant global lithium player aiming to fast track into development.

### Directors

Geoff Jones	Non-Executive Chair
Ron Mitchell	Managing Director
Dr Dianmin Chen	Non-Executive Director
Warrick Hazeldine	Non-Executive Director
Greg Lilleyman	Non-Executive Director
Hayley Lawrance	Non-Executive Director

**Competent Persons Statement:**

Exploration Results

*The Company confirms that it is not aware of any new information or data that materially affects the information in the relevant market announcements, and that the form and context in which the Competent Persons findings are presented have not been materially modified from the original announcements.*

Mineral Resources

*Information on historical exploration results and Mineral Resources for the Manna Lithium Project and the Marble Bar Lithium Project presented in this announcement, together with JORC Table 1 information, is contained in an ASX announcement released on 15 December 2022.*

*Where the Company refers to Mineral Resources for the Manna Lithium Project (MLP) and the Marble Bar Lithium Project in this announcement (referencing previous releases made to the ASX), it confirms that it is not aware of any new information or data that materially affects the information included in that announcement and all material assumptions and technical parameters underpinning the Mineral Resource estimate in that announcement continue to apply and have not materially changed. The Company confirms that the form and context in which the Competent Persons findings are presented have not materially changed from the original announcement.*