



19 June 2007

The Company Announcements Office
Australian Stock Exchange Limited
Exchange Centre, Level 6, 20 Bridge Street
SYDNEY NSW 2000

Dear Sir/Madam,

Geopacific Resources reports encouraging gold values from exploration at several Fiji projects.

- **Promising drill core (6m @ 3.29g/t Au) and outcrop (up to 17g/t Au) assays have been returned from recent exploration at Ista's Prospect (Vuda Project).**
- **High-grade gold outcrops (9m @ 4.77g/t Au) have been located at the Teitei Prospect (Vuda Project).**
- **Strongly anomalous gold in stream sediment samples have defined a high priority gold target in the Sabeto Project area.**
- **Extensive stream sediment sampling has located several anomalous gold areas at Raki Raki and extended the area of known mineralisation at the Qalau-4300E area approximately 2km further to the south west.**

Geopacific Resources NL (ASX: GPR) is pleased to announce that it has received anomalous gold assay results from recent prospecting at the Vuda, Raki Raki and Sabeto Projects in Fiji (Figure 1).

Ista's Prospect, Vuda Project

At Ista's Prospect two diamond drill holes (VN004 and VN005) were completed during early 2007. Both drill holes were located to test beneath silicified and pyritic outcrops with anomalous gold ranging up to 17g/t Au* in outcrop channel samples.

VN004 samples of sawn drill core have returned an interval of 6 metres averaging 3.29 g/t Au* between 19-25m (Table 1) directly underlying gold mineralised outcrop with grades ranging up to 9g/t Au. VN005 was drilled from the same drill collar location to test at depth and north of the gold mineralised outcrop and intersected similar clay-quartz-pyrite alteration. Assay data for VN005 are expected during late June.

Ista's Prospect is a steeply dipping mineralised dyke and planned follow-up work includes geophysical surveys (offset dipole-dipole IP), detailed mapping and trenching followed by deeper, step-out drill testing.

** Screen fire assays to test for nuggetty gold are yet to be completed. Gold content may be under reported.*

Geopacific Resources NL
ACN 003 208 393

info@geopacific.com.au
www.geopacific.com.au

Australia – Sydney
556 Crown St
(PO Box 477)
Surry Hills
NSW 2010
AUSTRALIA

T +61 2 9699 7311
F +61 2 9699 7322

Fiji – Nadi
PO Box 9975
Nadi Airport
Nadi
FIJI

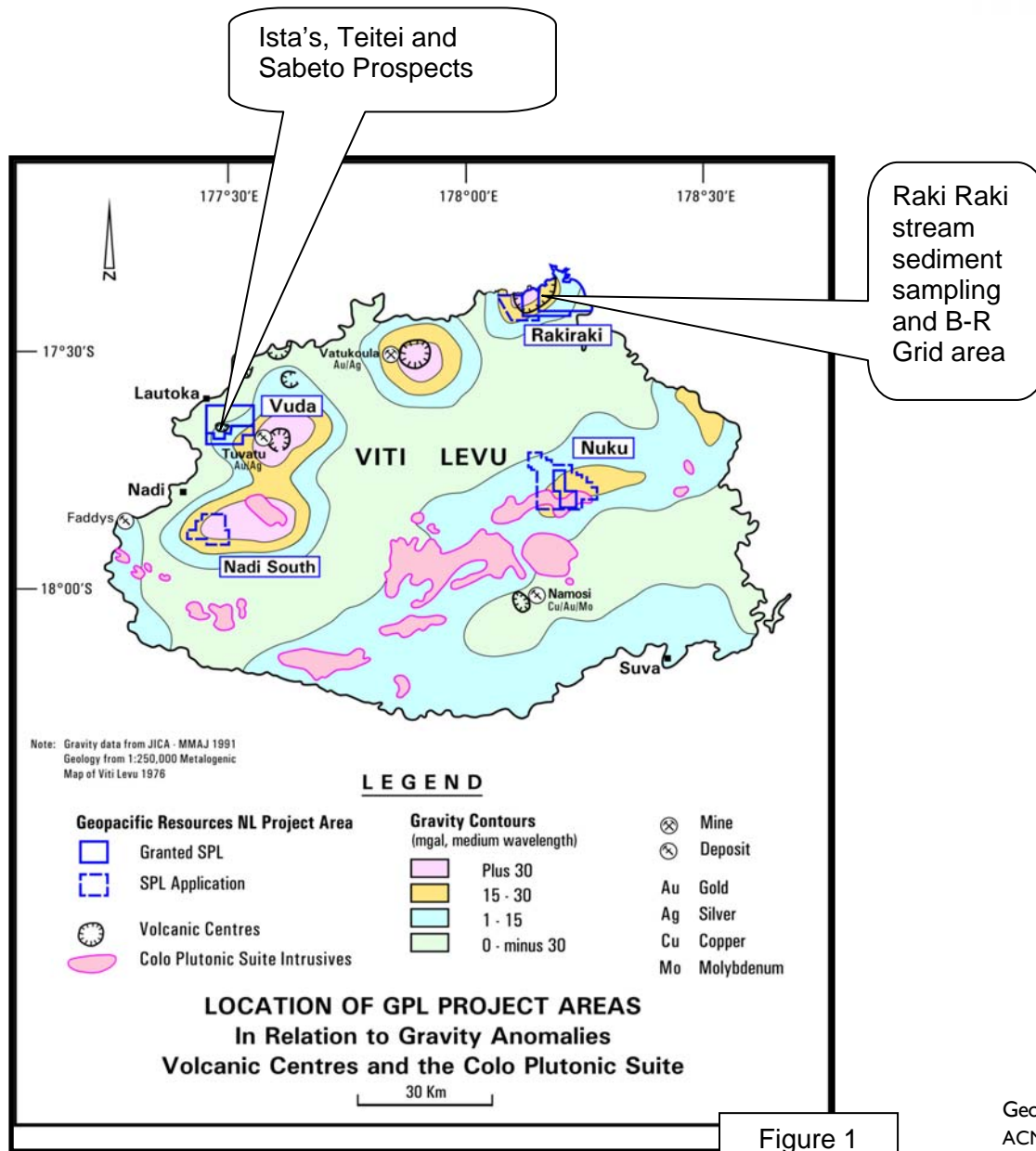


Figure 1

Geopacific Resources NL
ACN 003 208 393

info@geopacific.com.au
www.geopacific.com.au

Australia – Sydney
556 Crown St
(PO Box 477)
Surry Hills
NSW 2010
AUSTRALIA

T +61 2 9699 7311
F +61 2 9699 7322

Fiji – Nadi
PO Box 9975
Nadi Airport
Nadi
FIJI

Table 1. Assay results from VN004 drill core

sample	from (m)	to (m)	gold (g/t)*
2687	19	20	3.86
2688	20	21	3.21
2689	21	22	6.84
2690	22	23	2.36
2691	23	24	0.52
2692	24	25	2.93

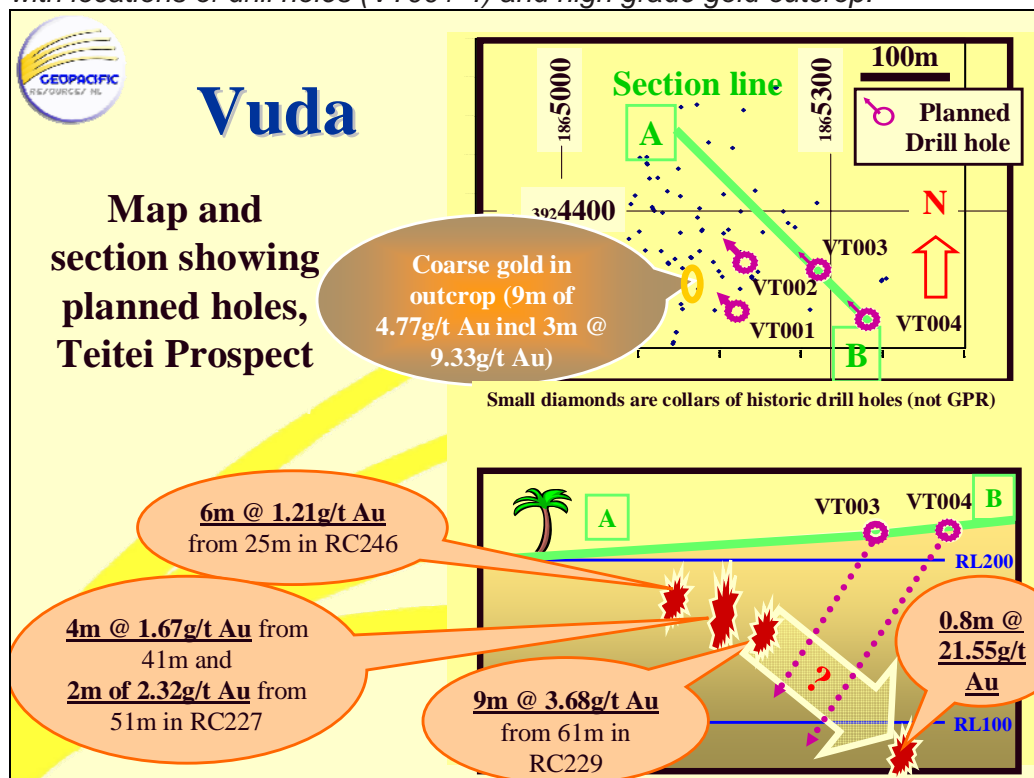
* gold assays by method OG43 (ALS Chemex) on sawn half core

Teitei Prospect, Vuda Project

Surface sampling in April-May located visible gold in pyritic and gossanous outcrops at the Teitei Prospect (Figure 2) and bedrock channel samples of these have defined a nine metre wide zone with an average gold grade of 4.77g/t Au* (includes 3m of 9.33g/t Au*). Drill testing from previous programmes by other companies in the area has shown considerable potential for deeper, high-grade gold mineralisation at Teitei but samples from these previous drill holes have been destroyed and geology reports indicate that sample recovery was typically poor. Geopacific's current drilling is expected to confirm and upgrade Teitei as a prospect with considerable potential to host a high-grade gold deposit.

Two diamond drill holes (DDHVT1 and 2) of a four drill hole programme to test this mineralisation at depth have been completed and the remaining two drill holes are expected to be finished during July (Figure 2). Assay results for these are expected during the next few weeks.

Figure 2. Teitei Prospect (Vuda) showing plan (top) and cross section (below) with locations of drill holes (VT001-4) and high grade gold outcrop.



Geopacific Resources NL
ACN 003 208 393

info@geopacific.com.au
www.geopacific.com.au

Australia – Sydney
556 Crown St
(PO Box 477)
Surry Hills
NSW 2010
AUSTRALIA

T +61 2 9699 7311
F +61 2 9699 7322

Fiji – Nadi
PO Box 9975
Nadi Airport
Nadi
FIJI

Sabeto Project

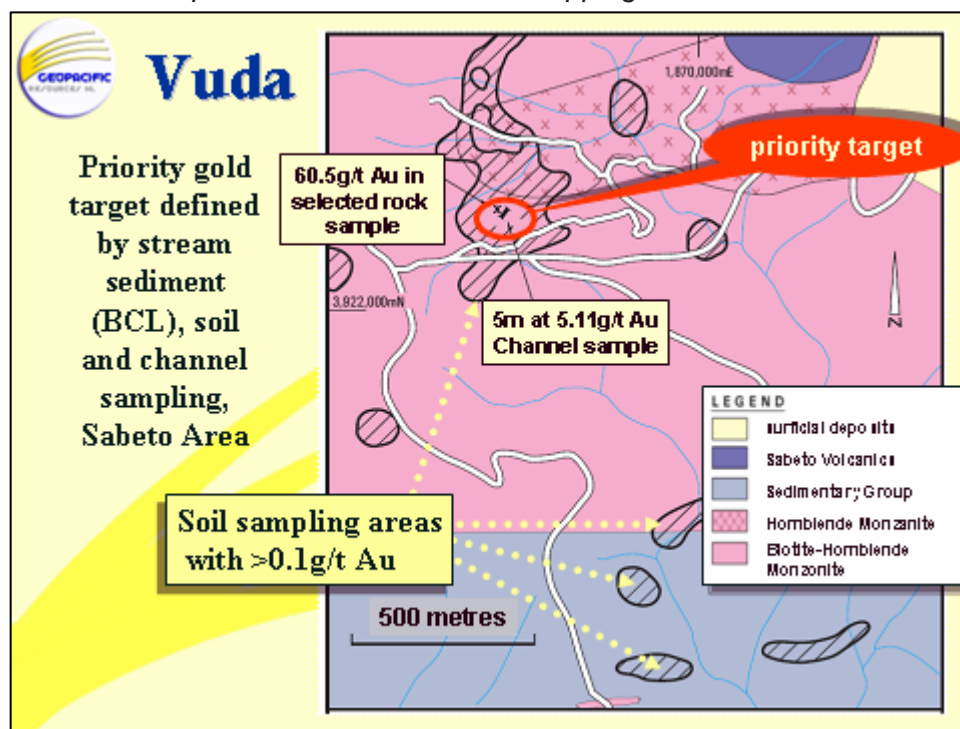
Stream sediment sampling in the Sabeto area south of Vuda has defined an area of approximately 400m x 200m which is anomalous in gold. Stream

* Screen fire assays to test for nuggetty gold are yet to be completed. Gold content may be under reported.

sediment samples at about 100m spacing range up to 0.928ppm Au in BCL samples. Assay data from outcrop samples in the anomalous area range to 60g/t Au (Figure 3).

Planned follow-up work includes a geophysical IP survey and surface mapping and sampling followed by drill testing.

Figure 3. Sabeto Prospect plan gold anomalous area defined by stream sediment samples and reconnaissance mapping.



Raki Raki Project Stream Sediment Sampling

At the Qalau-4300E Prospect an IP-resistivity survey and follow-up drilling during 2006 located gold mineralisation in the Qalau and 4300E portion of the BR grid which is shown as the eastern portion of Figure 4. High gold values in stream sediments collected south west of Qalau which is an interpreted source area for the anomalous gold. The sampling has defined an area south of Wasit village (Area A on Figure 4) which extends for over 1km and includes anomalous BCL stream sediments up to 34.2ppb Au.

South of the Qalau area (Prospect 3 in Figure 4) high gold in stream sediment sample from site 9305 (47.2ppb Au) indicates mineralisation at Qalau extends to the south (Area B on Figure 4).

Follow-up of these anomalies will include mapping and prospecting. Drill testing of targets in the NE part of the B-R grid is expected to start in July.

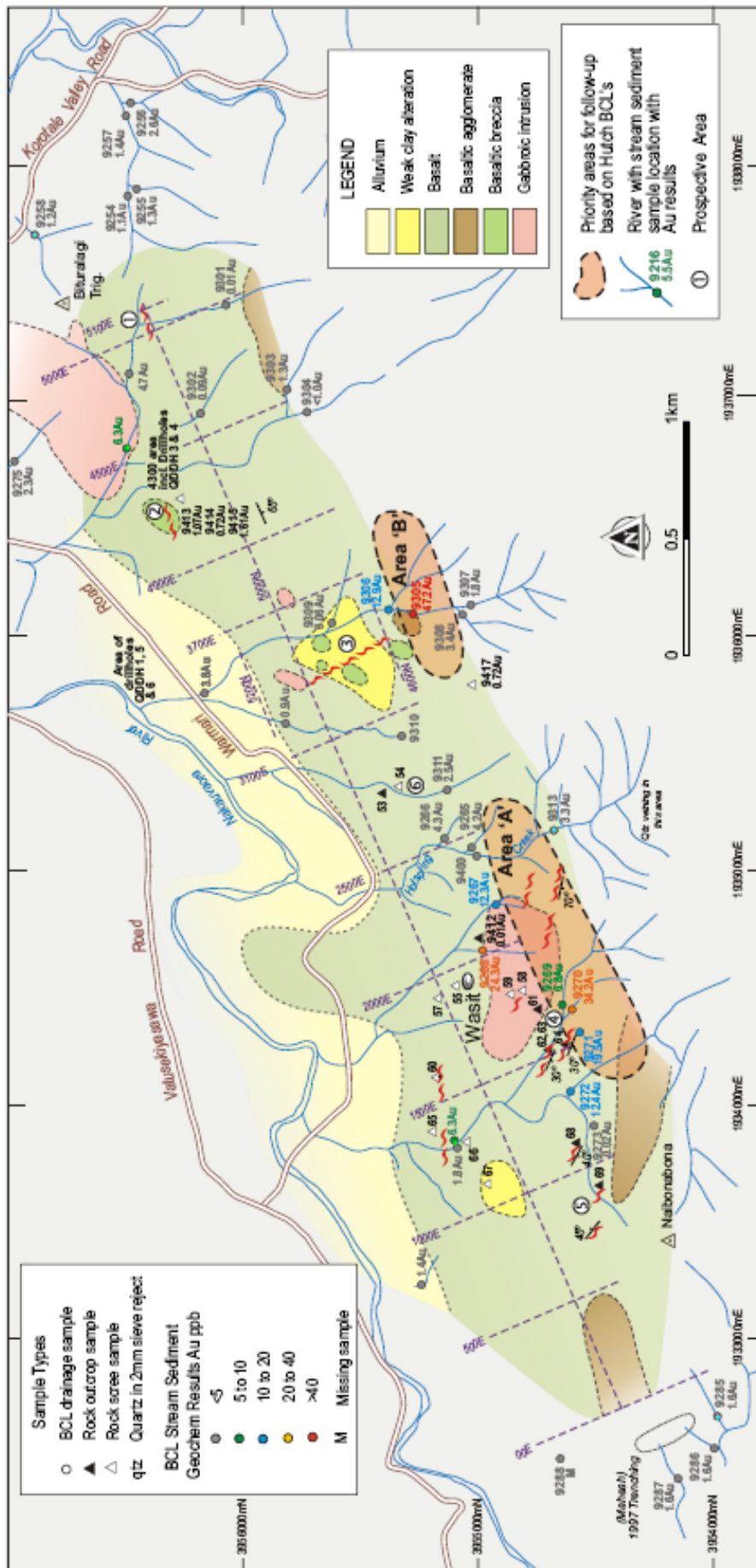
Geopacific Resources NL
ACN 003 208 393

info@geopacific.com.au
www.geopacific.com.au

Australia – Sydney
556 Crown St
(PO Box 477)
Surry Hills
NSW 2010
AUSTRALIA

T +61 2 9699 7311
F +61 2 9699 7322

Fiji – Nadi
PO Box 9975
Nadi Airport
Nadi
FIJI



Raki Raki Project - Rock Samples and BCL Stream Sediment Sample Locations with Gold Results, B-R Gridded Area

Figure 4

Geopacific Resources NL
ACN 003 208 393

info@geopacific.com.au
www.geopacific.com.au

Australia – Sydney
556 Crown St
(PO Box 477)
Surry Hills
NSW 2010
AUSTRALIA

T +61 2 9699 7311
F +61 2 9699 7322

Fiji – Nadi
PO Box 9975
Nadi Airport
Nadi
FIJI

T +679 6 720 166
F +679 6 720 206

Assay results for 182 stream sediment samples (BCL) from the eastern and central portions (Tataiya Area, Figure 5) have been received. Assays range up to 400ppb Au from sampled site 9371 located in Naria creek draining the central part the sample area and at this location gold can be readily collected in panned sample. Close spaced sampling and mapping upstream of 9371 has recently been undertaken to locate the source of this anomaly.

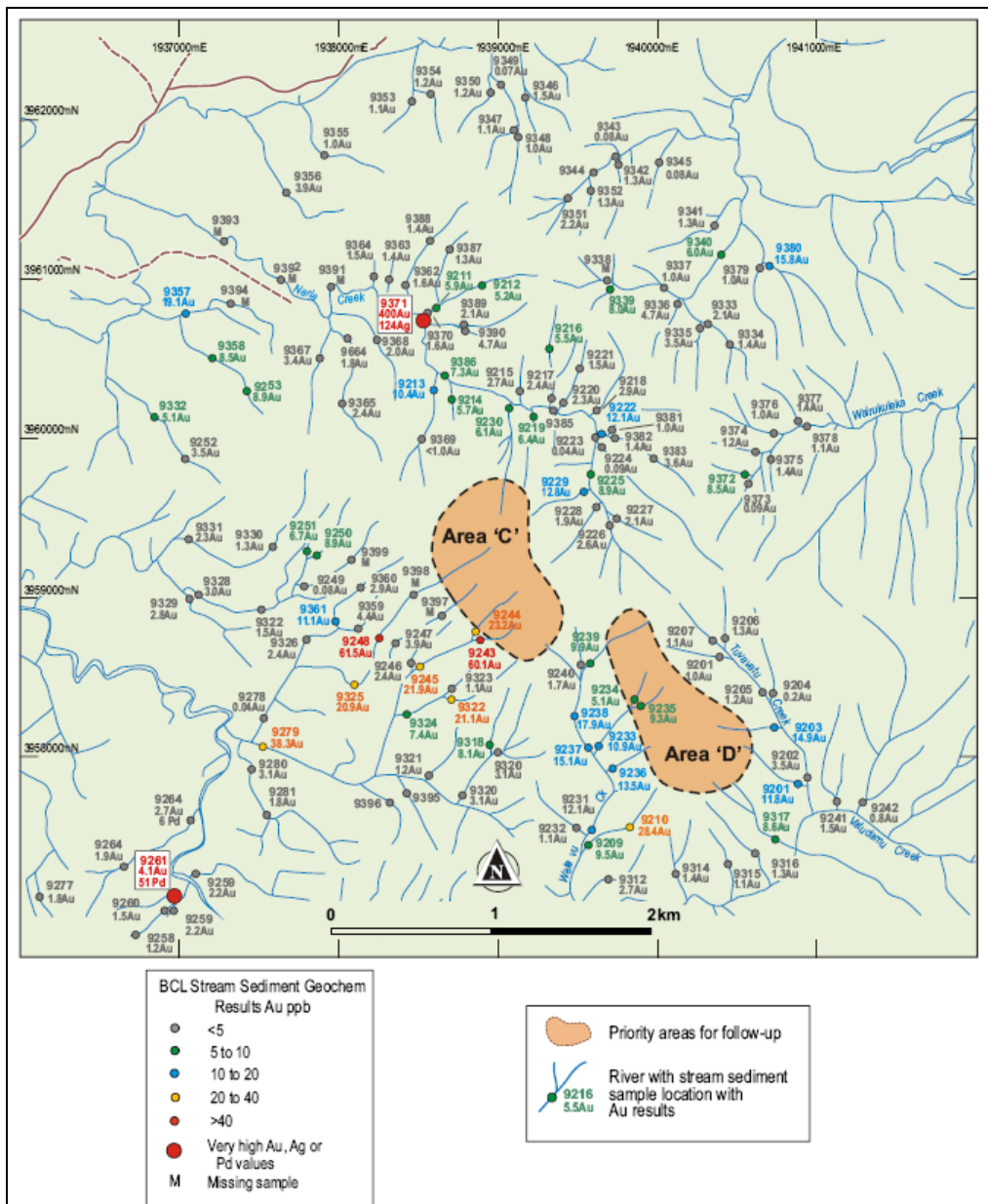


Figure 5 Raki Raki Project - BCL Stream Sediment Sample Locations with Gold Results

Geopacific Resources NL
ACN 003 208 393

info@geopacific.com.au
www.geopacific.com.au

Australia – Sydney
556 Crown St
(PO Box 477)
Surry Hills
NSW 2010
AUSTRALIA

T +61 2 9699 7311
F +61 2 9699 7322

Fiji – Nadi
PO Box 9975
Nadi Airport
Nadi
FIJI



Areas C and D (Figure 5) have been defined as anomalous source areas of approximately 1 square kilometre with BCL stream sediment samples ranging to 60ppb Au. Follow-up mapping and trenching of these areas is being undertaken prior to drill testing.

In the south west corner of the sampled area in Figure 4 an anomalous palladium value of 51ppb Pd was recorded in sample 9261 and follow-up sampling is also underway in this area.

The Rakiraki Project is a 50% joint venture between Peninsula Minerals Limited and Geopacific Resources NL. Geopacific is the manager of the joint venture.

Togo Porphyry Cu-Au Prospect (Nadi South Project)

Six diamond drill holes (NT001-6) have been completed at the Togo porphyry copper prospect where a three dimensional Induced Polarisation (IP) survey during 2006 defined a zone of high chargeability values extending from near surface to over 500m depth and across a strike length of more than 2 kilometres.

Assay results for drill core of NT003-6 which tested high chargeability zones in the northern part of the anomaly are expected during the next several weeks.

Other information on the Company's projects and previous Geopacific announcements are available on Geopacific's website at www.geopacific.com.au.

Yours faithfully

A handwritten signature in black ink, appearing to read "I. J. Pringle".

Ian J Pringle
(Managing Director)

Competent Person

*The review of exploration activities and results contained in this report is based on information compiled by **Dr Ian Pringle**, a Member of the Australasian Institute of Mining and Metallurgy. Dr Pringle is the Managing Director of Geopacific Resources NL and also a Principle of Ian J Pringle & Associates Pty Ltd, a consultancy company in minerals exploration. He has sufficient experience which is relevant to the style of mineralization and types of deposits under consideration and to the activity which he is undertaking to qualify as a Competent Person as defined in the December 2004 edition of the Australasian Code for Reporting of Exploration Results, Mineral Resources and Ore*

Geopacific Resources NL
ACN 003 208 393

info@geopacific.com.au
www.geopacific.com.au

Australia – Sydney
556 Crown St
(PO Box 477)
Surry Hills
NSW 2010
AUSTRALIA

T +61 2 9699 7311
F +61 2 9699 7322

Fiji – Nadi
PO Box 9975
Nadi Airport
Nadi
FIJI



Reserves (the JORC Code). Dr Pringle has consented to the inclusion in this report of the matters based on his information in the form and context in which it appears.

Further Information

For further information please contact Ian Pringle, Managing Director, on (02) 9699 7311 or ian@dca.org.au. An overview of Geopacific Resources NL can be viewed at www.geopacific.com.au.

Geopacific Resources NL
ACN 003 208 393

info@geopacific.com.au
www.geopacific.com.au

Australia – Sydney
556 Crown St
(PO Box 477)
Surry Hills
NSW 2010
AUSTRALIA

T +61 2 9699 7311
F +61 2 9699 7322

Fiji – Nadi
PO Box 9975
Nadi Airport
Nadi
FIJI