

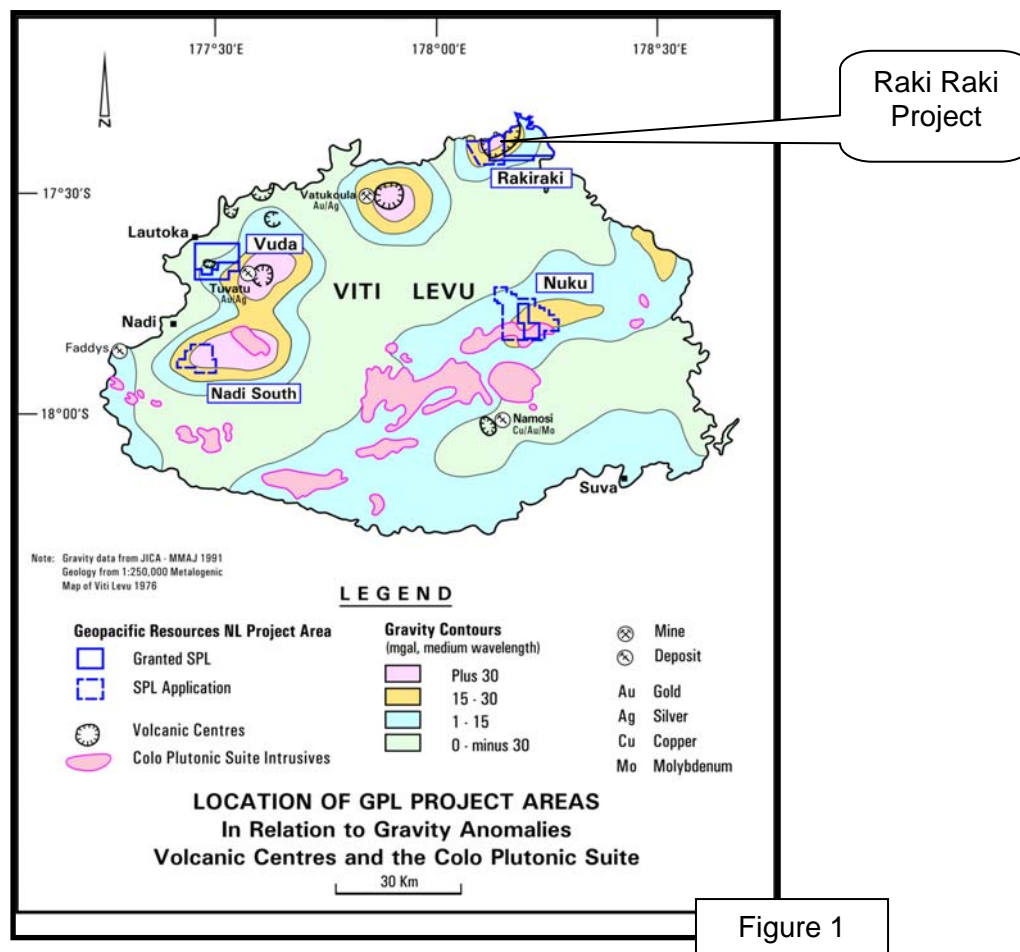
27 September 2007

The Company Announcements Office
 Australian Stock Exchange Limited
 Exchange Centre, Level 6, 20 Bridge Street
 SYDNEY NSW 2000

Dear Sir/Madam,

Geopacific commences a new drilling programme at the Qalau and 4300E Prospects, Raki Raki Project, Fiji.

Geopacific Resources NL (ASX: GPR) is pleased to announce that it has started drilling at Raki Raki (Figure 1) where high grade gold mineralisation was intersected after drill testing of induced polarisation (IP) resistivity anomalies during late 2006.



Diamond drilling will test the strike extent of epithermal gold veins intersected in DDHQ001 (2.8m from 61.2m of 14.43g/t Au) at Qalau. DDHQ008 which is located 50m west of DDHQ001 will target the northern end of a strong IP

Geopacific Resources NL
 ACN 003 208 393

info@geopacific.com.au
 www.geopacific.com.au

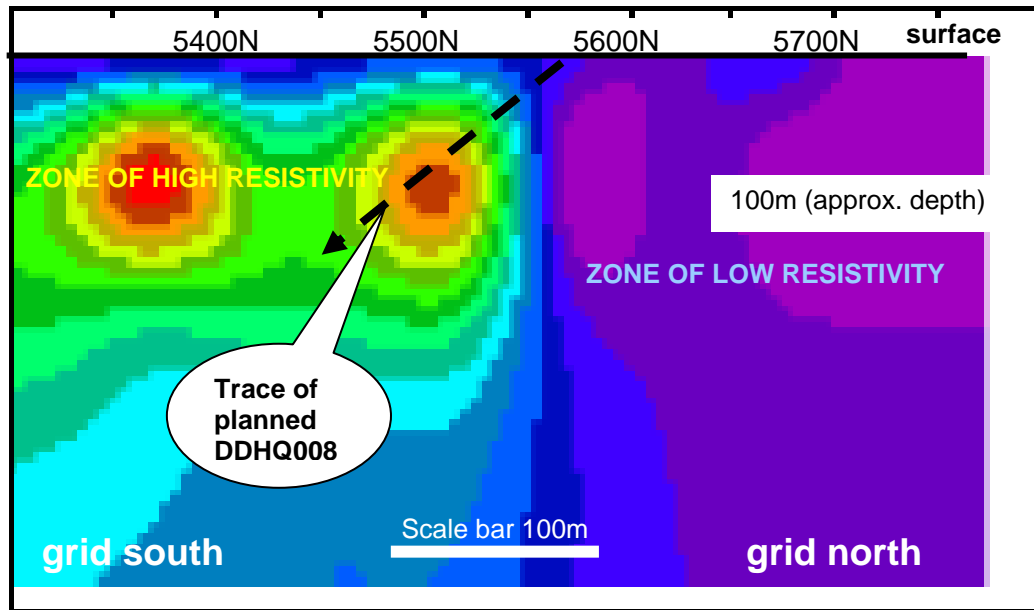
Australia – Sydney
 556 Crown St
 (PO Box 477)
 Surry Hills
 NSW 2010
 AUSTRALIA

T +61 2 9699 7311
 F +61 2 9699 7322

Fiji – Nadi
 PO Box 9975
 Nadi Airport
 Nadi
 FIJI

resistivity anomaly (Figure 2).

Figure 2. Cross section along 3600E showing IP resistivity data and the planned trace of DDHQ008. Bedrock is covered by approximately 20m of transported alluvial cover.



Drilling is also planned along the trend of the resistivity anomaly 'high' to the east of DDHQ001 and at the 4300E prospect where drilling in late 2006 intersected near surface gold in DDHQ003 (7m from 29m of 2.23g/t Au) and DDHQ004 (45.2m from 88m of 1.02g/t Au, including 5m of 3.4g/t Au and 3m at 4.45g/t Au).

The Raki Raki Project is a 50% joint venture between Peninsula Minerals Limited and Geopacific Resources NL. Geopacific is the manager of the joint venture.

Other information on the Company's projects and previous Geopacific announcements are available on Geopacific's website at www.geopacific.com.au.

Geopacific Resources NL
ACN 003 208 393

info@geopacific.com.au
www.geopacific.com.au

Yours faithfully



Ian J Pringle
(Managing Director)

Australia – Sydney
556 Crown St
(PO Box 477)
Surry Hills
NSW 2010
AUSTRALIA

T +61 2 9699 7311
F +61 2 9699 7322

Fiji – Nadi
PO Box 9975
Nadi Airport
Nadi
FIJI