



21 January 2009

The Company Announcements Office
Australian Stock Exchange Limited
Exchange Centre, Level 6, 20 Bridge Street
SYDNEY NSW 2000

**Bonanza gold grades intersected in surface trench samples at the
NE Gossan Zone, Faddy's Gold Deposit, Fiji**

Geopacific Resources NL (ASX: GPR) is pleased to announce that assays from trenching and costeaning completed last month at the Faddy's Gold Deposit, south of Nadi, Viti Levu, Fiji include **'bonanza' high-grade gold ranging up to 233g/t Au (7.5 oz/t) in one-metre sampled intervals**. This high grade interval occurs within a wider zone which averages 71.2g/t Au (2.3 oz/t) over four metres in trench FT2. The trenches have defined high grade gold values within several prominent structural features within a 150m long zone (up to 50m wide), gold mineralised gossan outcrop (Figure 1).

High-grade channel samples collected from the trenches include:

- **1m of 233g/t Au** within a 28m wide zone averaging **9.71g/t Au** in trench FT2
- **2m of 37.5g/t Au** in a road cut channel sample at RCB.
- **1m of 19.4g/t Au** in a road cut channel sample at RCA.
- **1m of 66g/t Au** at 10m in trench FT1, within a 54m wide zone of 1.26g/t Au.

The gold-bearing gossanous and oxidised outcrops are located in the north eastern portion of the Faddy's Gold Deposit at the NE Gossan Zone. High gold contents were intersected in shallow drill holes (intervals ranging up to 138.3g/t gold between 5-14 metres in drill hole FAD019 were reported on 27 November 2008). Deeper pyritic gold mineralisation was also intersected by Geopacific (0.5m sampled intervals range up to 73.2g/t Au at 80.2m within a 20.5m thick zone of 4.27g/t Au in FAD001) and this is the north-west dipping depth extension of the gossan.

Assay data for trench samples are summarised in Table 1. Channel samples were collected along 0.5m -1.0m intervals by collection of 15cm wide, 3-4cm deep sample cuts. For high grade mineralised zones both walls of the trenches have been sampled by horizontal sampling and vertical samples have been collected to define shallow dipping structures (Figure 2).

During late 2008 10 shallow drill holes close to FAD019 were completed (Figure 1) and the assay results for this work have no yet been finalised.

Geopacific Resources NL
ACN 003 208 393

info@geopacific.com.au
www.geopacific.com.au

Australia – Sydney
556 Crown St
(PO Box 477)
Surry Hills
NSW 2010
AUSTRALIA

T +61 2 9699 7311
F +61 2 9699 7322

Fiji – Nadi
PO Box 9975
Nadi Airport
Nadi
FIJI



The surface gold zone has dimensions of approximately 150 metres along strike, up to 50m wide and 120 metres down dip and is open along strike. The oxide mineralisation is located on low hills in a low land use area where soil cover is negligible. The location, free-dig qualities and low strip ratio of the near-surface high-grade gold zones are positive features for an open cut gold mine in this portion of the Faddy's Gold Deposit. An Inferred Resource of 920,000t of 4.9g/t gold (144,000 ounces of contained gold) was estimated for the deeper sulphide mineralisation at the Faddy's Gold Deposit prior to Geopacific's recent work.

Geopacific is planning a metallurgical testwork programme for high grade oxide mineralisation and during the next several months will complete a scoping study for a small, high-grade gold operation.

Other information on the Company's projects and previous Geopacific announcements are available on Geopacific's website at www.geopacific.com.au.

Yours faithfully,

A handwritten signature in black ink, appearing to read "I. J. Pringle".

Ian J Pringle
(Managing Director)

Competent Person

*The review of exploration activities and results contained in this report is based on information compiled by **Dr Ian Pringle**, a Member of the Australasian Institute of Mining and Metallurgy. Dr Pringle is the Managing Director of Geopacific Resources NL and also a Principle of Ian J Pringle & Associates Pty Ltd, a consultancy company in minerals exploration. He has sufficient experience which is relevant to the style of mineralization and types of deposits under consideration and to the activity which he is undertaking to qualify as a Competent Person as defined in the December 2004 edition of the Australasian Code for Reporting of Exploration Results, Mineral Resources and Ore Reserves (the JORC Code). Dr Pringle has consented to the inclusion in this report of the matters based on his information in the form and context in which it appears.*

Further Information

For further information please contact Ian Pringle, Managing Director, on (02) 9699 7311 or ianp@geopacific.com.au. An overview of Geopacific Resources NL can be viewed at www.geopacific.com.au.

Geopacific Resources NL
ACN 003 208 393

info@geopacific.com.au
www.geopacific.com.au

Australia – Sydney
556 Crown St
(PO Box 477)
Surry Hills
NSW 2010
AUSTRALIA

T +61 2 9699 7311
F +61 2 9699 7322

Fiji – Nadi
PO Box 9975
Nadi Airport
Nadi
FIJI

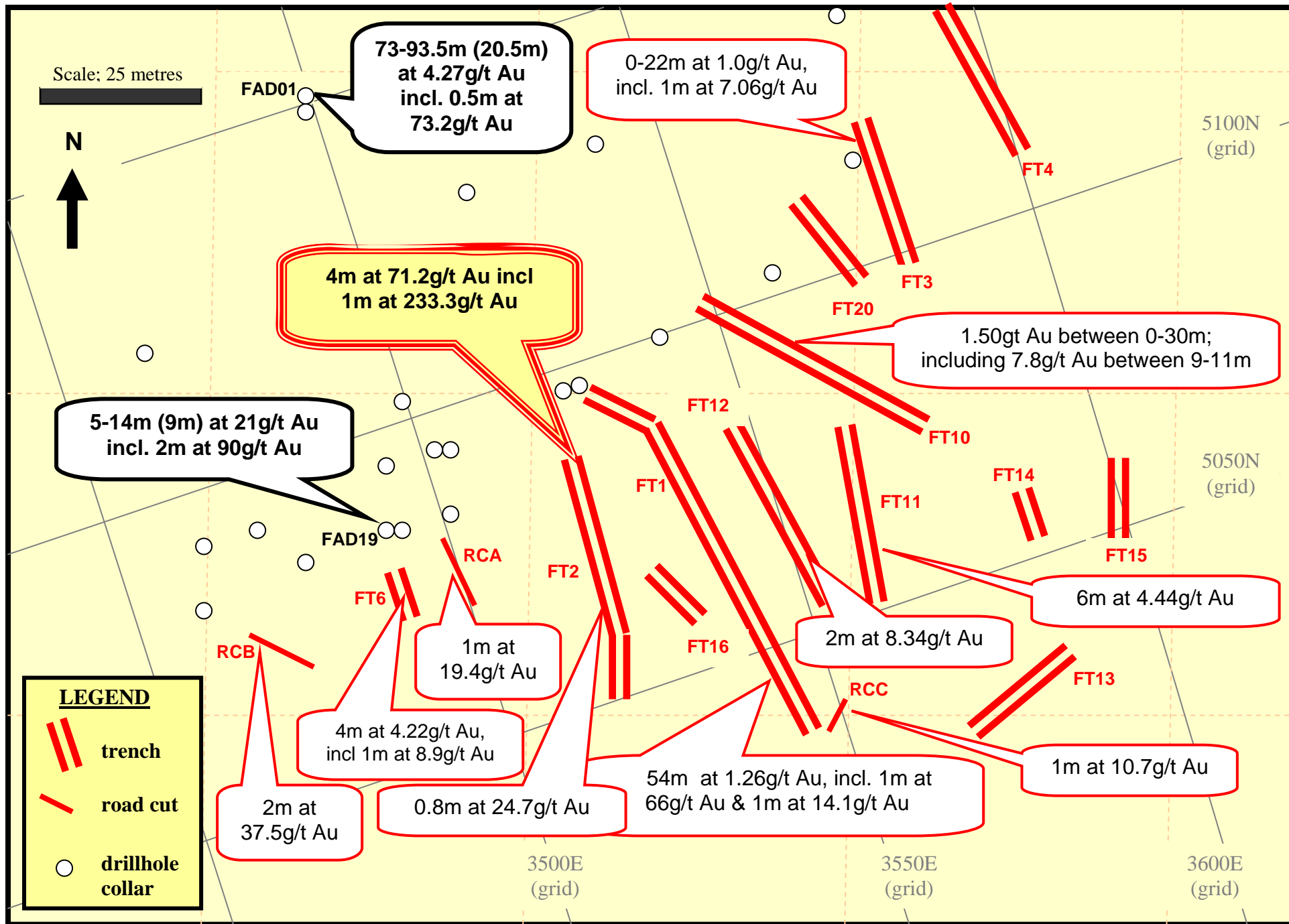


Figure 1. Drill hole and trench assay summary map, Faddys Gold Deposit, NE Gossan Zone.

Table 1. Trench Summary, Faddy's Gold Deposit (results as at 20 January 2009)

Trench summary						Channel sample assay summary			
Trench number	start coordinates (local grid, magnetic)		end coordinates (local grid, magnetic)		trench length (m)	length		composite interval (#1)	gold (g/t) #3
	northing	easting	northing	easting		from (m)	to (m)		
FT01	5035	3545	5095	3525	61	2	3	1	14.1
						7	61	54	1.26
					incl	26	33	7	2.81
					incl	30	31	1	9.41
					incl	47	53	6	2.98
					incl	10	10	1(V)	66.0
						9.75	10.05	0.3	48.0
FT02	5045	3520	5085	3520	41	0	23	23(V)	0.80
					incl	12	15	3(V)	3.23
						13	41	28	9.71
					incl	14.1	14.9	0.8	24.7
					incl	28	32	4	71.2
					incl	28	29	1	233.3
FT03	5097	3580	5120	3580	23	0	22	22	1.00
					incl	13	14	1	7.06
FT04	5110	3600	5133	3600	23				#2
FT05	5110	3640	5126	3640	17				#2
FT06	5072	3492	5078	3491	6	1.5	5.5	4	4.22
					incl	1.5	2.5	1	8.89
FT07	5040	3440	5042	3444	6				#2
FT08	4995	3517	4976	3516	16	12.5	12.5	1(V)	14.6
						12.1	13.3	1.2	8.60
FT09	4991	3540	4985	3542	6	3	3	1(V)	3.46
FT10	5100	3550	5070	3575	31	0	30	30	1.50
					incl	0	11	11	3.05
					incl	10	11	1	12.4
					east wall	9	10	1	15.2
FT11	5072	3563	5050	3560	22	3	9	6	4.44
FT12	5085	3548	5052	3552	34	10	34	24	1.66
					incl	30	32	2	8.34
FT13	5032	3589	5025	3570	18				#4
FT14	5057	3588	5051	3588	6	0	4	4	1.53
FT15	5056	3603	5048	3600	8	0	6	6	0.47
FT16	5065	3530	5056	3532	9				#4
roadcut A	5072	3500	5080	3499	8	0	8	8	3.44
					incl	1	4	3	8.06
					incl	2	3	1	19.4
roadcut B	5075	3478	5070	3473	8	0	8	8	10.1
					incl	0	2	2	37.5
roadcut C	5038	3551	5034	3548	4	3	4	1	10.7

#1 Samples collected along horizontal intervals (1m) along base of wall of trench. V denotes samples collected by vertical channel sampling at 1m spacing.

#2 Assay results all less than 0.5g/t Au.

#3 Fire assays completed at Vatukoula Gold analytical laboratory (Fiji). All results >0.5g/t Au have been re-assayed.

#4 Assays not yet received.

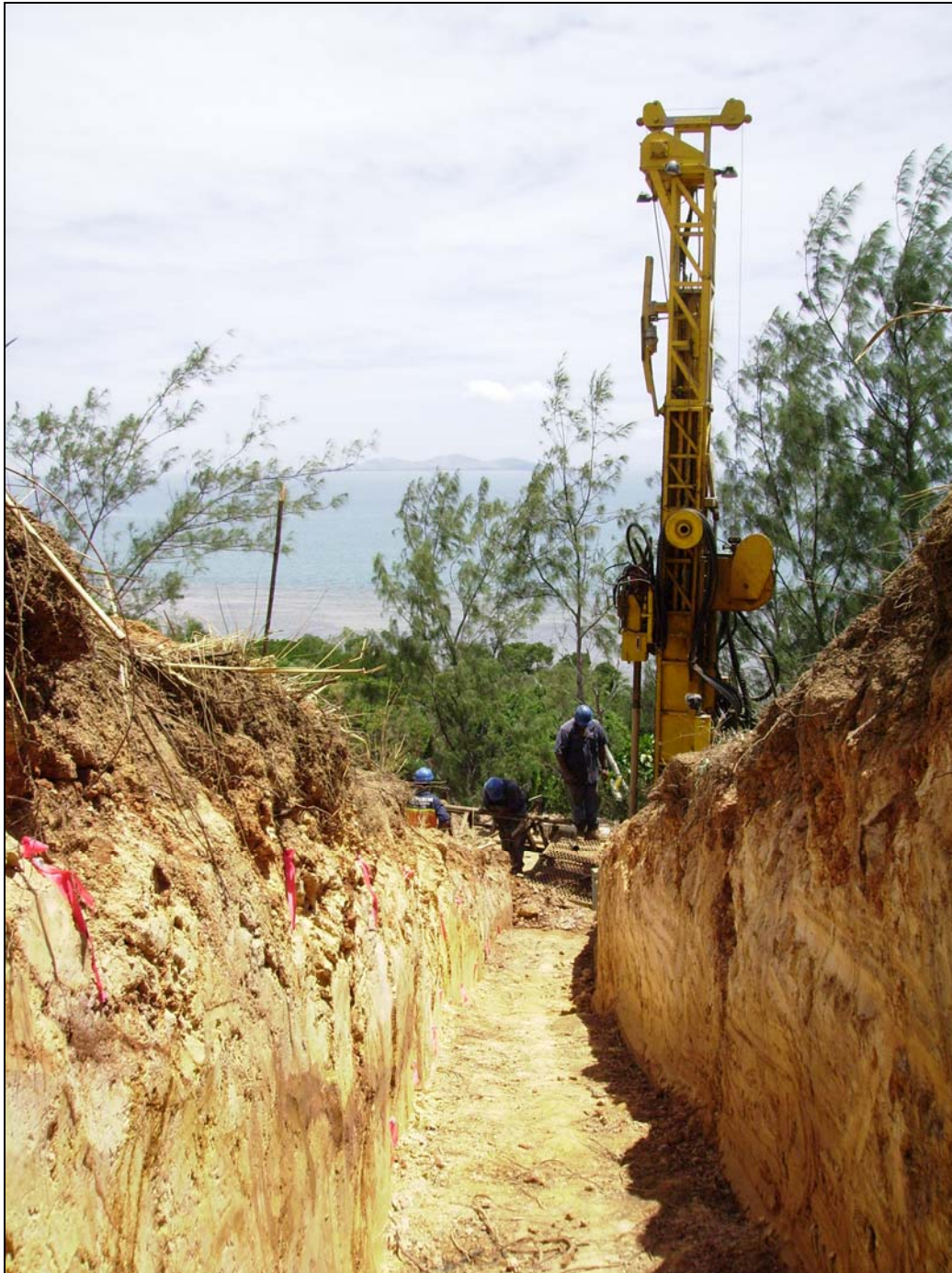


Figure 2. Northern end of trench FT2 at the NE Gossan zone of the Faddy's Gold Deposit. Note that the mineralized gossan is mostly soft, poorly indurated rock and that soil cover is thin. High grade mineralization (1m of 233g/t Au within a zone of 28m of 9.71g/t Au) occurs along this part of trench FT2.

Geopacific Resources NL
ACN 003 208 393

info@geopacific.com.au
www.geopacific.com.au

Australia – Sydney
556 Crown St
(PO Box 477)
Surry Hills
NSW 2010
AUSTRALIA

T +61 2 9699 7311
F +61 2 9699 7322

Fiji – Nadi
PO Box 9975
Nadi Airport
Nadi
Fiji

T +679 6 720 166
F +679 6 720 206