



## EXPLORATION UPDATE AT DUKETON GOLD PROJECT

Great Southern Mining Limited (ASX: GSN) (“GSN” or the “Company”) shares the Duketon Greenstone Belt with gold producer Regis Resources Limited (ASX: RRL), which has been successful in the identification of +8Moz of gold resources (refer to company website). Most of these deposits reside on major well understood shear zones. GSN’s 250km<sup>2</sup> of tenure in the Duketon Greenstone Belt includes significant portions of these shear zones. As high priority target corridors, GSN has aggressively begun to explore these well understood trends. It is interpreted that all three mineralised corridors continue into the company’s tenure with:

- ~8km of the Eristoun Trend
- ~7km of the Garden Well Trend
- ~11km of the Rosemont-Ben Hur Trend.

These trends are mapped on Figure 1.

### Upcoming exploration activities:

- The Company is designing multi-phase exploration programs at the Duketon Gold Project to explore these well understood shear zones hosting the bulk of mineral deposits in the Duketon Belt.
- These programs will see a combination of extensive multielement soils and geochemical programs in order to provide additional targets and aid in the design of further extensive slim-line reverse circulation (RC) and deeper RC drilling.
- Following the exceptional drilling results at Southern Star (announced 28/6/22) the exploration team is designing targeted programs aimed at known mineralisation zones with geochemical programs over the extensional zones being undertaken to delineate further follow up targets.
- A slimline RC program at the Amy Clarke Prospect is being designed, noting that previous results have delineated a kilometer- scale anomalous gold trend with standout intersection of **5m @ 8.2 g/t Au including 1m @ 33.5 g/t Au** from 33m in 21ACAC0147 (Figure 2).
- Further multielement soil analysis to be undertaken at Amy Clarke and the newly emerging Golden Boulder Prospect.
- This is part of an overarching strategy to discover and to grow Mineral Resources at the Duketon Project.

### GSN’s Executive Chairman, John Terpu, commented:

*“The Duketon Belt is a well understood Greenstone Belt with three main shear zones with millions of ounces discovered by our direct neighbours, Regis Resources, and we expect more to be found on our ground. Our outstanding results from our latest round of drilling reinforce that Southern Star is shaping up as a very sizeable gold deposit and is likely to be the first resource of potentially several deposits to be discovered along this portion of the Duketon Belt. Recent investment activity in the Belt highlights the undervalued opportunity and discovery potential others see in the area. GSN is focused on defining mineable resources along these trends which will add value for shareholders and a potential rerate of the Company’s value in the near future.*”

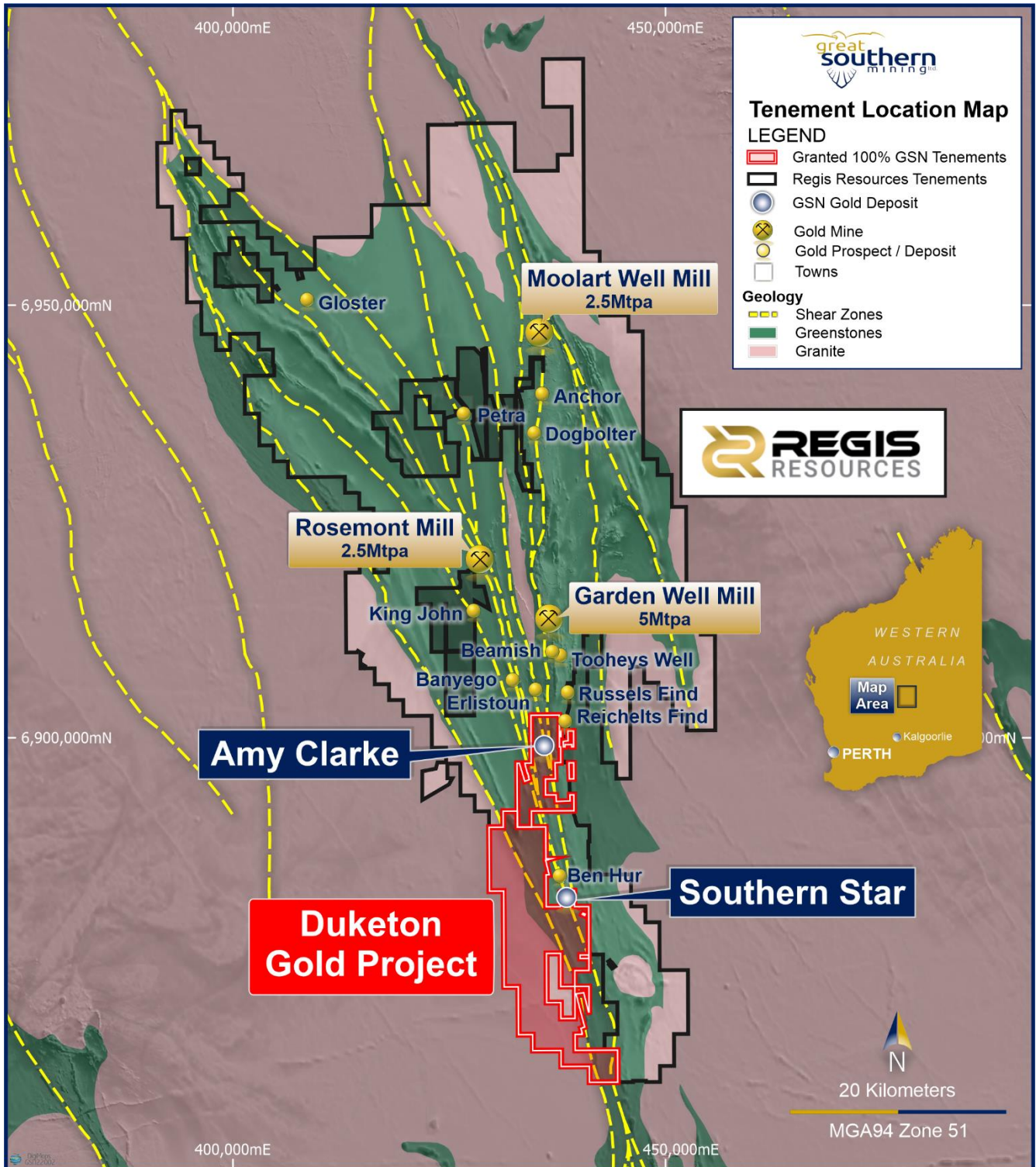


Figure 1 Plan view of GSN's tenement holding in the Duketon Greenstone Belt highlighting Regis Resources Ltd's tenure along with the locations of Southern Star and mineralised corridors (in yellow).

Much of the mineralised trends, particularly at the Amy Clarke Prospect, has not been the subject of significant drill testing. Like Southern Star, the exploration along the trend by previous explorers appears to be shallow and ineffective, therein providing significant exploration upside for the Company.

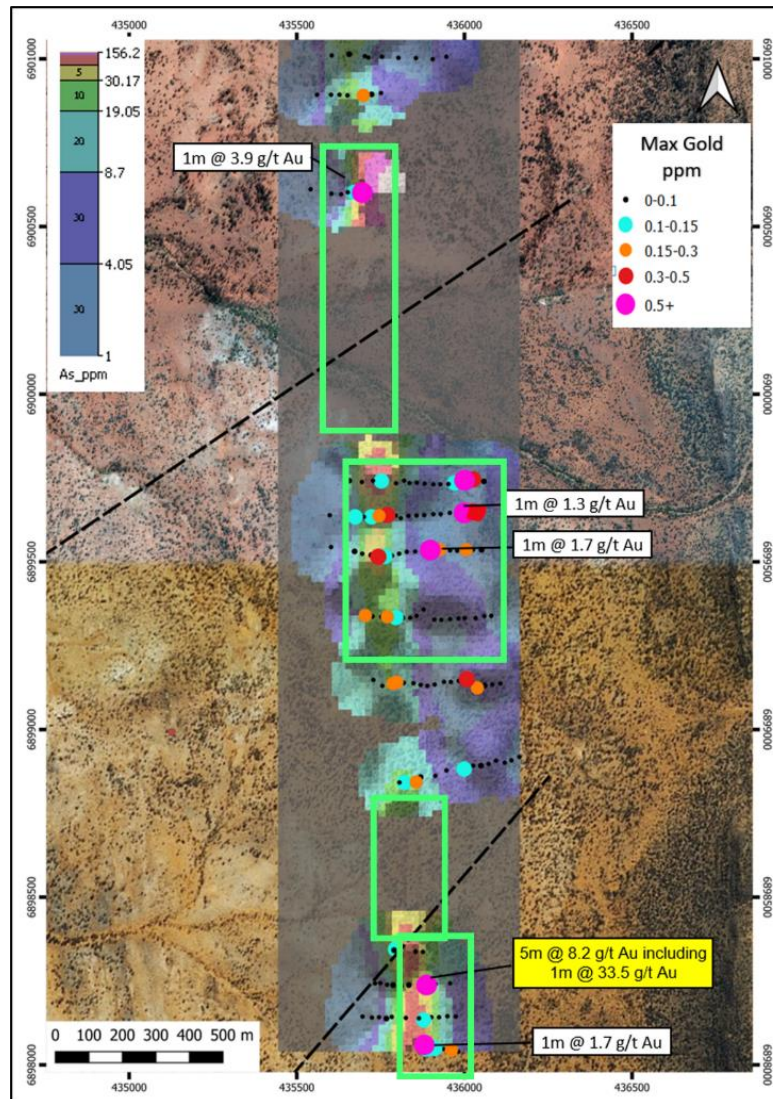


Figure 2 - Plan view of Amy Clarke, highlighting bottom of hole Arsenic contours and recent aircore drilling results that form a coherent mineralised trend. Green boxes are current planned areas of slimline drill testing.

**-ENDS-**

The release of this ASX announcement was authorised by the Executive Chairman on behalf of the Board of Directors of the Company.

## About Great Southern Mining

Great Southern Mining Limited is a leading Australian listed exploration company. With significant land holdings in the world-renowned districts of Laverton in Western Australia and Mt Carlton in North Queensland, all projects are located within 25km of operating mills and major operations.

The Company's focus is on creating shareholder wealth through efficient exploration programs and strategic acquisitions of projects that complement the Company's existing portfolio of quality assets.

For further information regarding Great Southern Mining Limited please visit the ASX platform (ASX:GSN) or the Company's website [www.gsml.com.au](http://www.gsml.com.au).

## **Competent Person's Statement**

The information in this report that relates to Exploration Results is based on information compiled or reviewed by Simon Buswell-Smith, a Competent Person who is a Member of the Australian Institute of Geoscientists. Mr. Buswell-Smith is a full time employee of Great Southern Mining Limited. Mr. Buswell-Smith has sufficient experience that is relevant to the style of mineralisation and type of deposit under consideration and to the activity being undertaken to qualify as a Competent Person as defined in the 2012 Edition of the 'Australasian Code for Reporting of Exploration Results, Mineral Resources and Ore Reserves'. Mr. Buswell-Smith consents to the inclusion in the report of the matters based on his information in the form and context in which it appears.

## **Forward Looking Statements**

Forward-looking statements are only predictions and are not guaranteed. They are subject to known and unknown risks, uncertainties and assumptions, some of which are outside the control of the Company. Past performance is not necessarily a guide to future performance and no representation or warranty is made as to the likelihood of achievement or reasonableness of any forward-looking statements or other forecast. The occurrence of events in the future are subject to risks, uncertainties and other factors that may cause the Company's actual results, performance or achievements to differ from those referred to in this announcement. Given these uncertainties, recipients are cautioned not to place reliance on forward looking statements. Any forward-looking statements in this announcement speak only at the date of issue of this announcement. Subject to any continuing obligations under applicable law and the ASX Listing Rules, the Company, its directors, officers, employees and agents do not give any assurance or guarantee that the occurrence of the events referred to in this announcement will occur as contemplated.