



## Discovering Gold and Copper in NSW

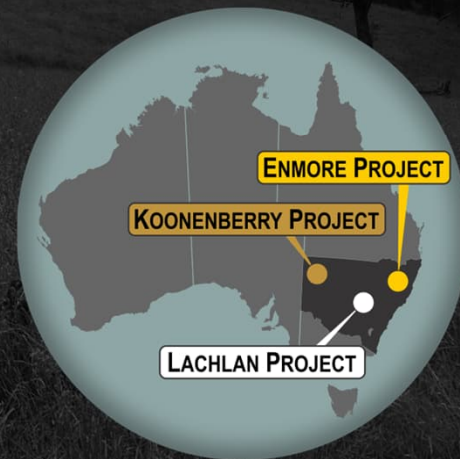
Investor Presentation  
NWR Resources Lunch  
18<sup>th</sup> March 2026

Dan Power  
Managing Director

ASX: KNB



SUBSCRIBE



# Disclaimer

## General information only

This presentation contains general background information and summary information about Koonenberry Gold Limited (ACN 619 137 576) (“Koonenberry”) and its activities as at the date of this presentation. None of the members of Koonenberry or their or Koonenberry’s respective advisors, affiliates, related bodies corporate, directors, officers, partners, consultants, employees and agents (“Other Persons”) have authorised, permitted or caused the issue, submission, dispatch or provision of this presentation and none of them makes or purports to make any statement in this presentation. To the maximum extent permitted by law, Koonenberry and the Other Persons expressly exclude and disclaim all liability, including without limitation for fault or negligence on the part of any person, or for any expenses, losses, damages or costs incurred as a result of the use of this presentation or its contents and the information in this presentation being inaccurate or incomplete in any way for any reasons, whether by negligence or otherwise.

To the maximum extent permitted by law, each of Koonenberry and the Other Persons make no representation or warranty, express or implied, as to the currency, accuracy, reliability or completeness of all or any part of all or any part of this document, or any constituent or associated presentation, information or material, or the accuracy, likelihood of achievement or reasonableness of any forecasts, prospects of returns contained in or implied by, the information in this presentation or any part of it. Except as required by applicable law or regulation, neither Koonenberry nor the Other Persons have any obligation to provide any additional or updated information, whether as a result of new information, future events or results or otherwise.

## Forward looking statements

These materials include forward looking statements. Often, but not always, forward looking statements can be identified by the use of forward looking words such as “may”, “will”, “expect” “intend”, “plan”, “estimate”, “anticipate”, “continue”, “outlook” and “guidance” or other similar words and may include, without limitation, statements regarding plans, strategies and objectives of management, anticipated production or construction commencement dates and expected costs or production outputs.

Forward looking statements are based on Koonenberry and its Management’s good faith assumptions relating to the financial, market, regulatory and other relevant environments that will exist and affect Koonenberry’s business and operations in future. Koonenberry does not give any assurance that the assumptions on which forward looking statements are based will prove to be correct, or that Koonenberry’s business or operations will not be affected in any material manner by these or other factors not foreseen or foreseeable by Koonenberry or Management or beyond Koonenberry’s control. Although Koonenberry attempts and has attempted to identify factors that would cause actual actions, events or results to differ materially from those disclosed in forward looking statements, there may be other factors that could cause actual results, performance, achievements or events not to be as anticipated, estimated or intended, and many events are beyond the reasonable control of Koonenberry. Accordingly, readers are cautioned not to place undue reliance on forward looking statements. Forward looking statements in these materials speak only at the date of issue. Subject to any continuing obligations under applicable law in providing this information Koonenberry does not undertake any obligation to publicly update or revise any of the forward looking statements or to advise of any changes in events, conditions or circumstances on which any such statement is based.

## Cautionary statement on visual estimates of mineralisation

Any references in this announcement to visual results are from visual estimates by qualified geologists. Laboratory assays are required for representative estimates of quantifiable elemental values. Visual estimates of mineral abundance should never be considered a proxy or substitute for laboratory analyses where concentrations or grades are the factor of principal economic interest. Visual estimates also potentially provide no information regarding impurities or deleterious physical properties relevant to valuations.

## Proximate resources and statements

This announcement may contain references to other parties either nearby or proximate to Koonenberry Gold’s projects and/or references that may have topographical or geological similarities to Koonenberry Gold’s projects. It is important to note that such exploration results, discoveries or geological similarities do not in any way guarantee that the Company will have any exploration success at all, or in delineating a Mineral Resource on any of Koonenberry Gold’s Projects.

## Competent Persons Statement

The information in this presentation that relates to previous Exploration Results was reported in accordance with the JORC Code and ASX Listing Rules in the Company’s ASX announcements set out in the slide labelled “References”.

The Company confirms that it is not aware of any new information or data that materially affects the information included in the relevant market announcements and, in the case of estimate of Mineral Resources, that all material assumptions and technical parameters underpinning the estimate in the relevant market announcement continue to apply and have not materially changed. The Company confirms that the information and context in which the Competent Person’s findings are presented have not been materially modified from the original market announcements.

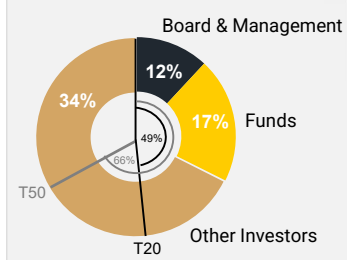
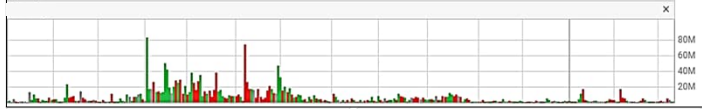
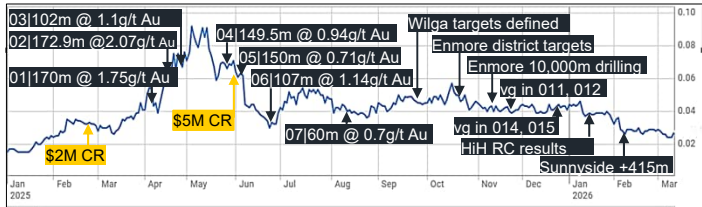
No new exploration results are reported in this presentation.

This announcement has been approved for release by the Board of Koonenberry Gold Ltd.

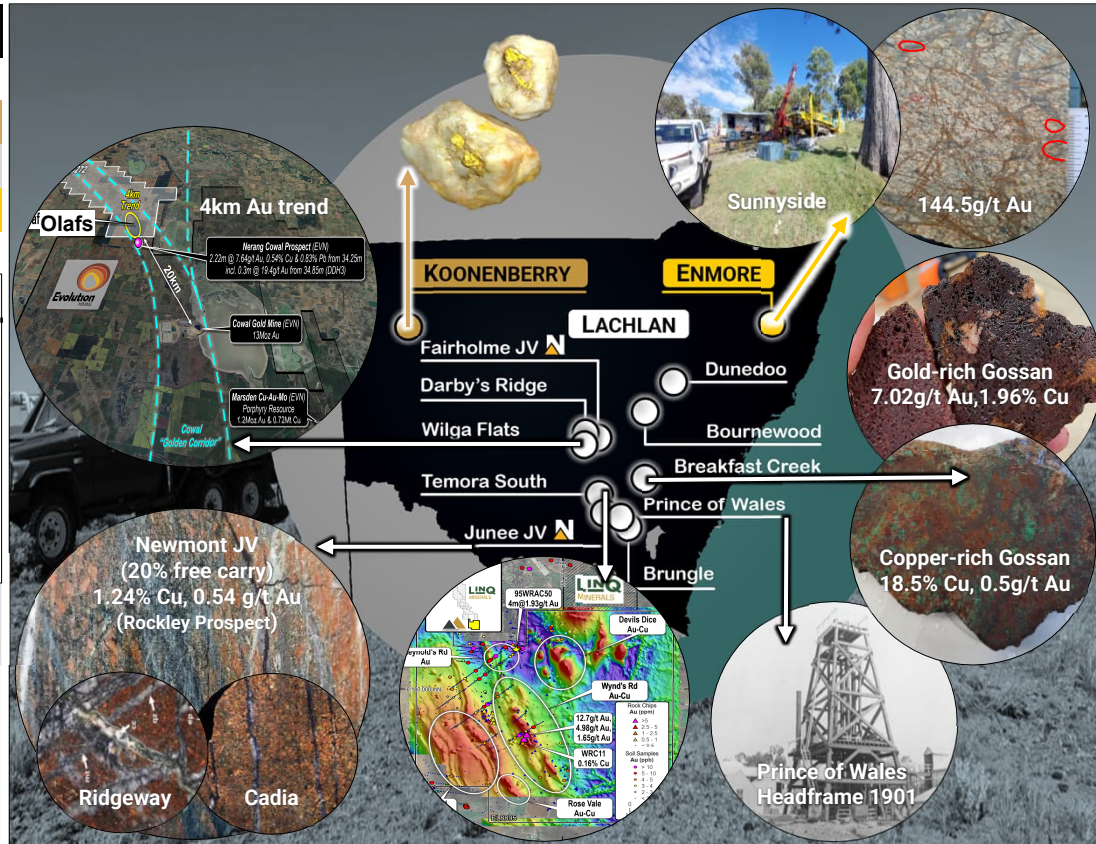
# Koonenberry Gold » Overview

Leveraged to discovery » Strong pipeline of opportunities & active programs

Capital Structure	ASX: KNB
Shares on issue <sup>(1)</sup>	1,027M
Share price (13/03/2026)	\$0.024
Market capitalisation	\$24.7M
Cash (31/12/2025)	\$6.3M
Options (ASX:KNBO @ \$0.04, 29/04/2026)	94M



**Cornerstone Investors**



1. Other securities on issue comprise 92.3 million performance rights, exercisable on various milestones.  
 2. Top 20 hold ~49% and Top 50 hold ~66% of the shares on issue (17/03/2026).

# Enmore Project (100% owned)

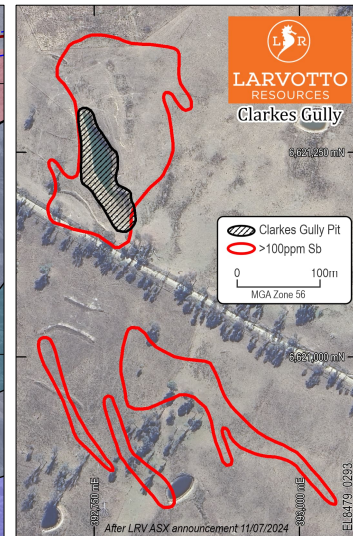
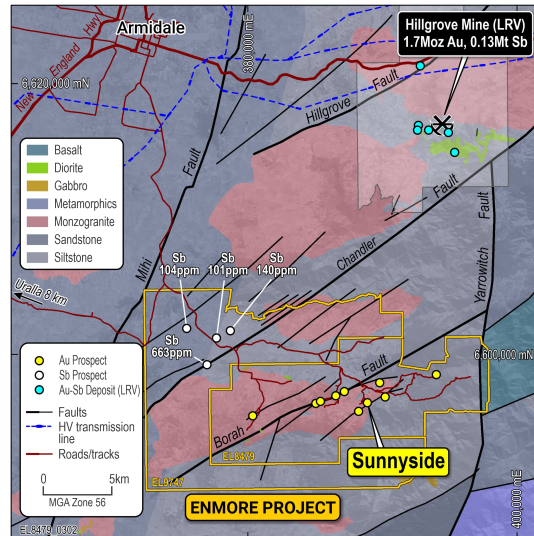
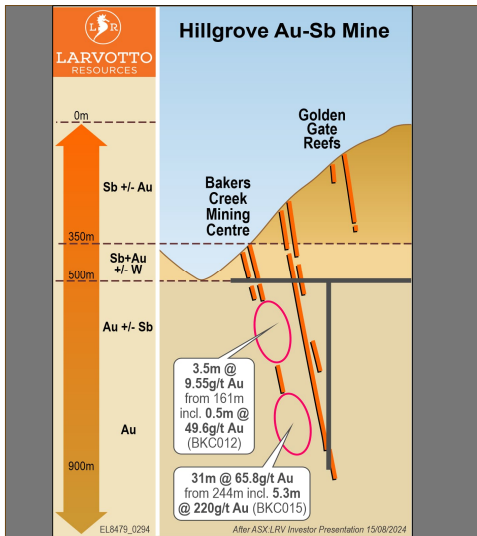
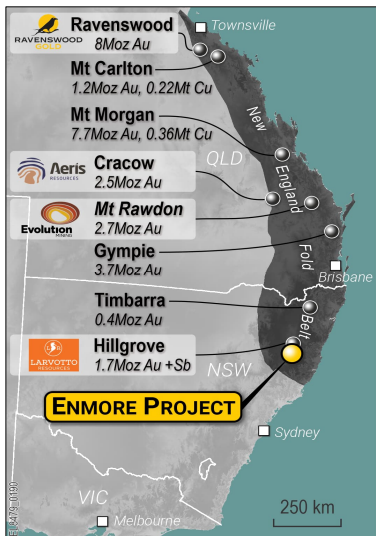
New England Fold Belt » +35Moz Au endowment <sup>(1)</sup>

## Underexplored Belt » Multiple Tier 1 deposits <sup>(1)</sup>

- Hillgrove Mine 1.7Moz Au, 0.13Mt Sb (ASX: LRV) <sup>(2)</sup>
  - Structurally controlled, epizonal orogenic gold + antimony
  - Chandler Fault controlling structure
  - Sb-Au near surface → Au dominant at depth
  - Hillgrove >100ppm Sb defines Sb-Au mineralisation <sup>(3)</sup> →
- Mineralisation +900m vertical » Au grade increasing with depth

## Enmore Gold Project » 20km from Hillgrove Au-Sb Mine

- Similar geology and fault architecture to Hillgrove
  - Structurally controlled, epizonal orogenic gold (±antimony)
  - Multiple parallel structures/shear zones and district targets
  - Gold dominant + Sb-Au adjacent to Chandler Fault
- » 663ppm Sb, 91ppb Au, 710ppm As over 3km x 3km area <sup>(3)</sup>
- Mineralisation +415m vertical » Sb potential at shallower levels



Notes: 1. Phillips, 2017; 2. ASX:LRV 22/12/2023; 3. ASX:LRV 11/07/2024; 4. ASX:KNB 25/02/2025.





# Enmore Project » District Potential

## +3 parallel shear zones » +30km prospective strike

### Borah Prospect » High-grade gold target

- Significant historical workings including adits and shafts
- +1km long Au soil anomaly (max 11,000ppb Au) <sup>(1)</sup>
- Historical drilling: **13m @ 7.1g/t Au** from 85m, inc. **4m @ 20.63g/t Au** from 92m <sup>(1)</sup>

### Sherwood Prospect » Sunnyside "look-alike"

- Historical workings at granite-sediment contact similar to Sunnyside
- +1.4km Au + As soil anomaly (open). **Rock chips to 7.6g/t Au** <sup>(3)</sup>
- Limited historical drilling: **9.87m @ 4.54g/t Au** from 54.55m <sup>(1)</sup>

### Queen of Sheba Prospect » High-grade gold target

- Historical workings: **74.1g/t Au** <sup>(1)</sup>
- 900m x 300m Au soil anomaly (max 3,430ppb Au) <sup>(1)</sup>
- Limited historical drilling: **0.60m @ 7.75g/t Au** from 41.46m <sup>(1)</sup>

### Postman's Gully Prospect » High grade historical workings

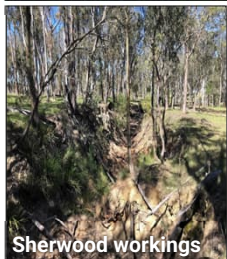
- +1km long Au + As soil anomaly (open to east, west & north)
- **Rock chips to 14.05g/t Au** (ER0028), **11.09g/t Au** (ER0027) <sup>(2)</sup>
- **Drilling underway**



Borah Gold Mine workings



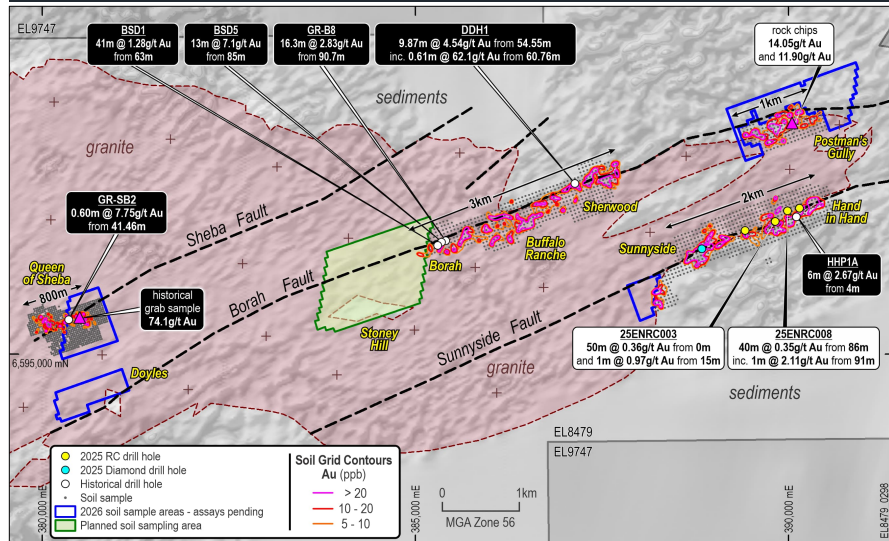
Postman's Gully workings



Sherwood workings



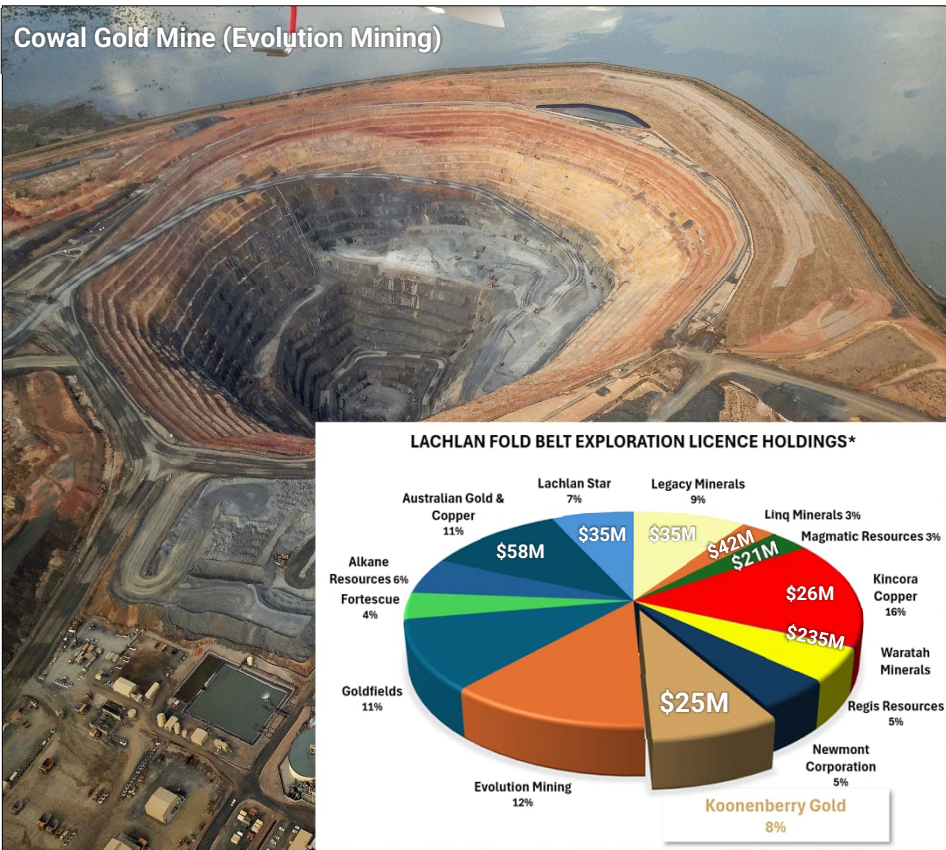
Postman's Gully 14.05g/t Au (ER0028)



Notes: 1. ASX:KNB 17/10/2024; 2. 22/07/2025; 3. 20/10/2025.

# Lachlan Project » Multiple targets covering 1,580km<sup>2</sup>

## Strategic holding in Junee & Molong Belts » 10Moz Au, 19Mt Cu endowment <sup>(1)</sup>



Notes: 1. Future of Minerals in NSW Report, March 2020. NSW Dept. of P, I&E; \*Selected Exploration Licence Holders, Minview (Appendix 1).

# Lachlan Project » Wilga Flats (100% owned)

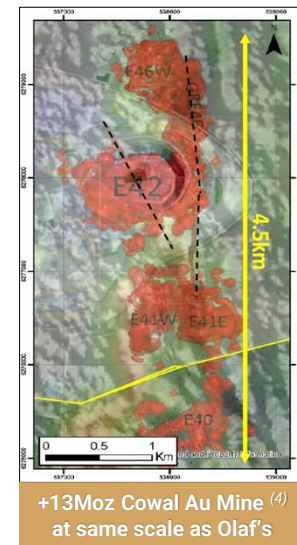
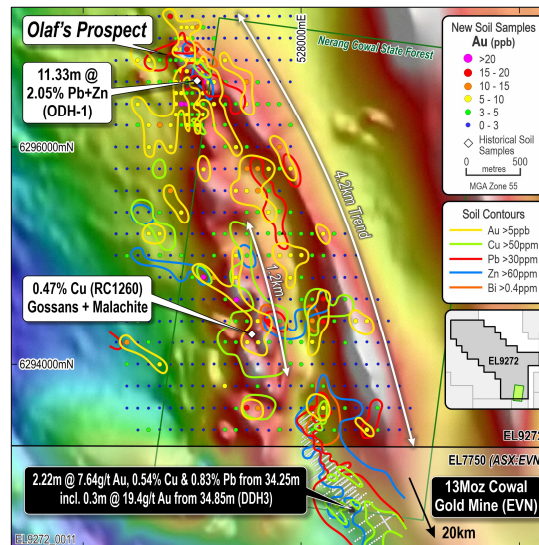
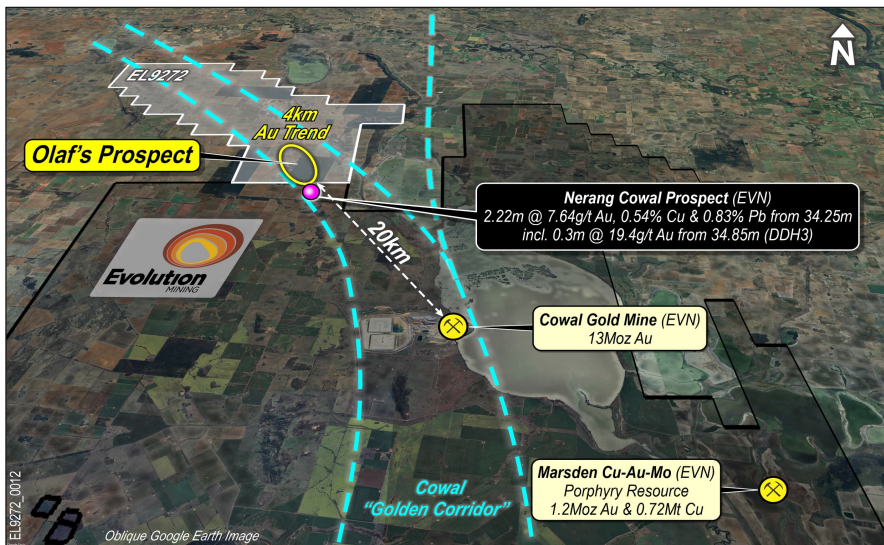
20km north of +13Moz Cowl Au Mine <sup>(1)</sup> » Standout epithermal Au target

## Highly prospective » Features similar to Cowl Igneous Complex

- Strategically located large Exploration Licence (272km<sup>2</sup>)
- Macquarie Arc high K calc-alkaline volcanic stratigraphy
- Outcrop to thin cover
- Coincident Magnetics and K-Radiometric signatures
- Extremely limited historical exploration
- Historical results » **2.22m @ 7.64g/t Au inc. 0.3m @ 19.4g/t Au <sup>(2)</sup>**

## Olaf's Prospect » Geology + alteration + mineralisation + scale

- **4.2km Gold + Carbonate Base Metal soil trend (Au-Cu-Pb-Zn-Bi)**
- Pyrite>sphalerite>galena>chalcopryrite veins
- **Epithermal quartz-carbonate-adularia alteration**
- Highly anomalous rocks: 0.47% Cu, 0.33% Zn (1260); <sup>(2)</sup> 1.32% Pb (788-4) <sup>(3)</sup>
- Limited drilling confirms base metals: 11.33m @ 2% Pb+Zn (ODH-1) <sup>(2)</sup>
- Forward Plan » **IP geophysics & advance to drill ready**



Notes: 1. Evolution Mining, 2023; 2. Foster, 1977; 3. Unknown Author, 1976; 4. Evolution Mining, 2017.

# Lachlan Project » Breakfast Creek (100% owned)

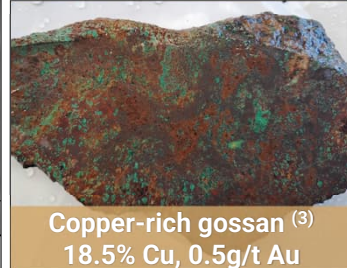
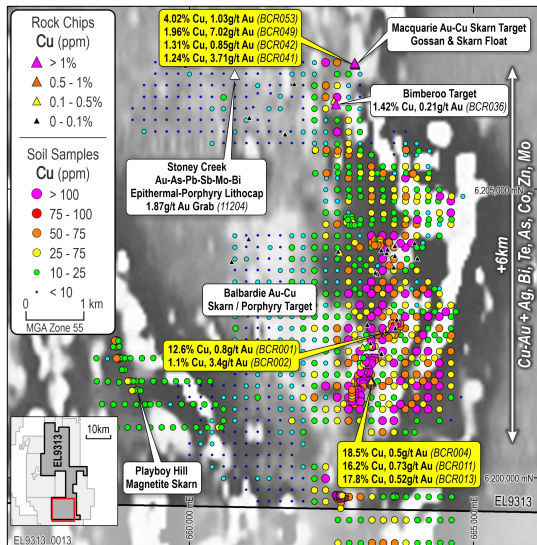
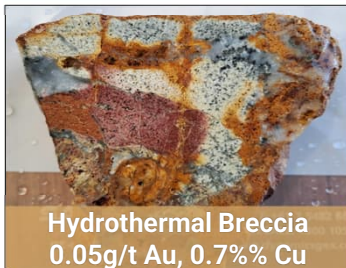
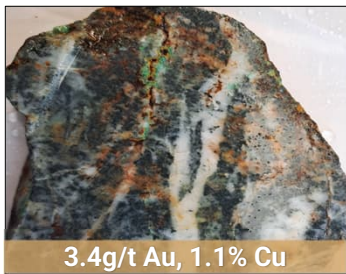
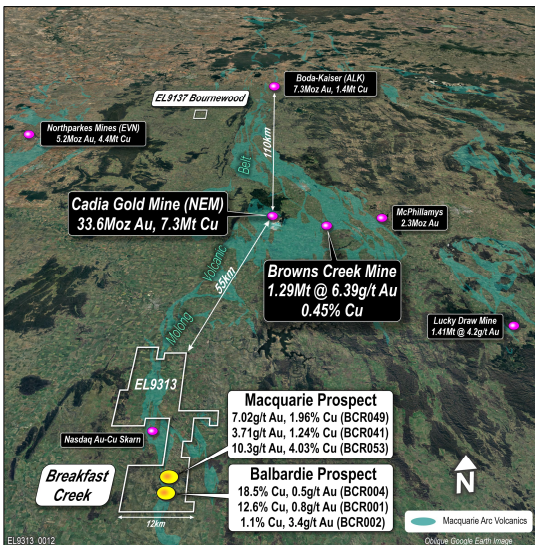
55km south of Cadia Cu-Au Mine » High-grade Cu-Au discovery opportunity

## Molong Volcanic Belt » Rare opportunity, tightly held belt

- Large tenement holding (392km<sup>2</sup>)
- Entire prospective belt currently held by majors and active juniors
- Sub-cropping volcanics, localised limestones & intrusives
- **High-grade Cu-Au skarn** and porphyry systems:
  - e.g. Browns Creek 1.29Mt @ 6.39g/t Au, 0.45% Cu <sup>(1)</sup>
- **Underexplored, limited drilling » Potential for high-grade Cu-Au**

## Balbardie Cu-Au Prospect » Exciting high-grade skarn target

- **Significant +6km Cu-Au + pathfinder soil anomaly**
- Widespread skarn-type hydrothermal alteration & gossans
- **High-grade Cu-Au grab samples: 3.4g/t Au, 1.1% Cu (BCR002); 0.8g/t Au, 12.6% Cu (BCR001); 0.5g/t Au, 18.5% Cu (BRC004); 0.73g/t Au, 16.2%Cu (BCR011); 0.52g/t Au, 17.8% Cu (BCR013) <sup>(2, 3)</sup>**
- **Forward Plan » Surface geochemistry + IP & advance to drill ready**



Notes: 1. Smart & Wilkins, 1997; 2. ASX:KNB 17/10/2024; 3. ASX:KNB 07/01/2025.

# Lachlan Project » Temora South

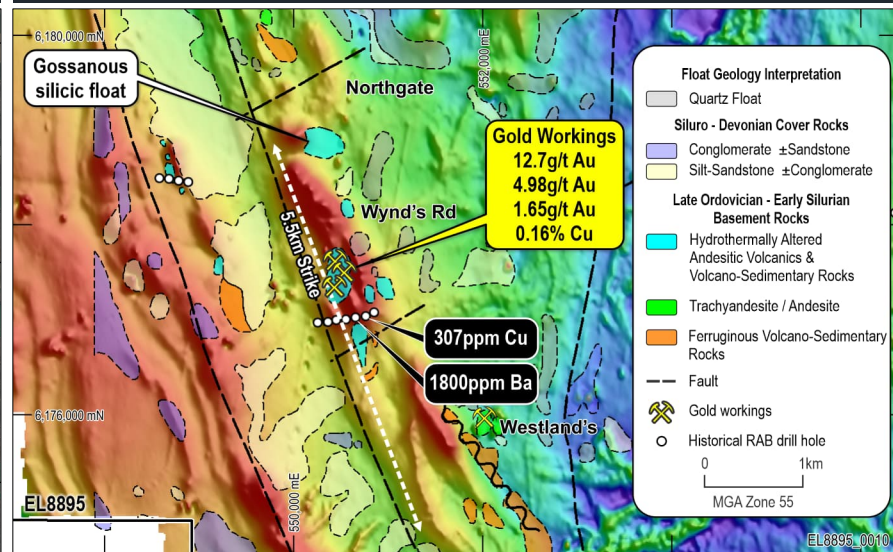
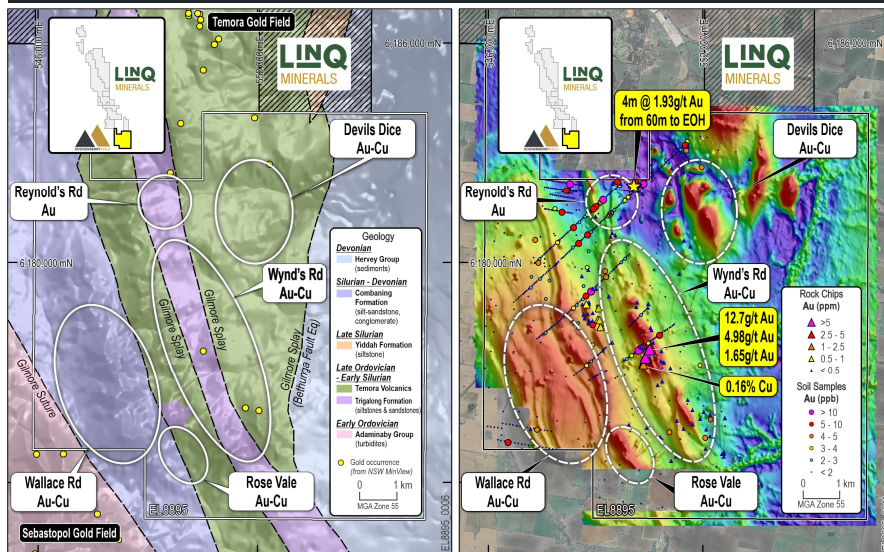
16km from 1.4Moz<sup>(1)</sup> Gidginbung Mine (ASX:LNQ) » Underexplored

## Temora South Project » Epithermal Au & Porphyry Cu-Au Targets

- Prospective Late Ordovician to Early Silurian Volcanics
- Bounded by Gilmore Suture and second-order splay faults
- Recent success by Linq Minerals at Gidginbung (HSE gold) and Mandamah (porphyry Cu) with several +100gm intercepts<sup>(2)</sup>
- “Roadside” RAB hole 4m @ 1.93g/t Au from 60m to EOH<sup>(3)</sup>
- Five targets identified » Most targets not drill tested

## Wynds Rd Au Target » Outcropping gold system

- Historical workings +400m strike
- +2.5km strike of phyllic-argillic-advanced argillic alteration
- Alteration assemblage consistent with root zone of lithocap
- 5.5km long strike of untested linear magnetic highs
- Qtz-carb +cpy-py veins
- Rock chips: 12.7g/t Au, 4.98g/t Au, 1.65g/t Au & 0.16% Cu<sup>(3)</sup>
- Forward Plan » Geochemistry + IP & advance to drill ready



Notes: 1. Phillips, 2017; 2. ASX:LNQ 12/02/2026; 3. ASX:KNB 17/10/2024.

# Lachlan Project » Junee JV with **Newmont**

## Porphyry Cu-Au and Epithermal Au potential » +5Moz gold systems targeted

### Newmont Manager » **KNB 20% free carry to commercial production**

- ~\$23.9M expended: extensive datasets and drilling (+66,000m)

### Kurrajong Prospect » **Cu-Au porphyry system from surface**

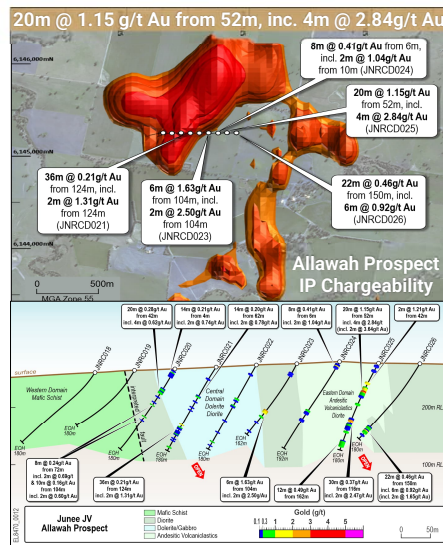
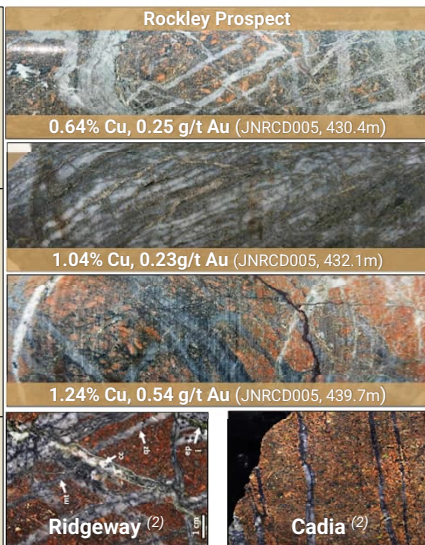
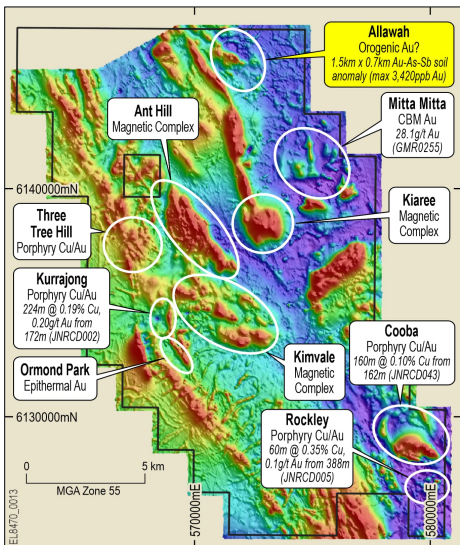
- 224m @ 0.19% Cu, 0.20g/t Au from 172m, inc. 107m @ 0.3% Cu, 0.33g/t Au from 254m (JNRC002) <sup>(1)</sup>

### Rockley Prospect » **Cu-Au porphyry system**

- 60m @ 0.35% Cu, 0.1g/t Au from 388m (JNRC005) <sup>(1)</sup>
- **Ridgeway-type porphyry alteration and veining**

### Allawah Prospect » **Significant scale**

- 1.5km x 0.7km Au-As-Sb soil anomaly (max 3,420ppb Au)
- Outcropping gossans, stockwork veining
- Structurally controlled sericite-Fe carbonate-albite alteration
- **Limited drilling: 20m @ 1.15g/t Au from 52m, inc. 4m @ 2.84g/t <sup>(1)</sup>**
- Pyrite-arsenopyrite ± tennantite-tetrahedrite
- Resistivity and chargeability targets
- **Newmont funded 3,500m RC drilling planned for June**



Notes: 1. ASX:KNB 17/10/2024; 2. Ridgeway and Cadia Hill Photos from Harris et al.

# Koonenberry Gold » Planned discovery activity

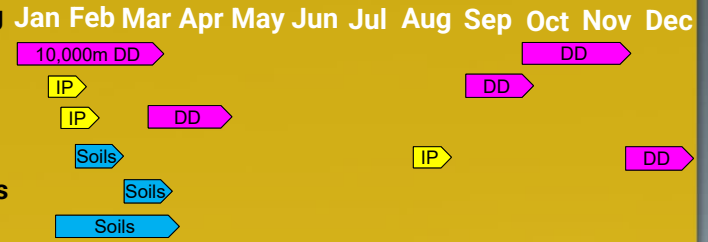
Active programs on multiple fronts » Strong news flow for investors



## ENMORE PROJECT » Significant discovery story emerging

- Sunnyside: 10,000m drilling program...ongoing
- Sunnyside Fault: Follow up drilling at Hand in Hand
- Borah Fault: IP geophysics + drilling at Postman's
- Sheba Fault: Geochem, IP + drilling
- Chandler Fault: Geochem to define Sb +Au anomalies
- District: Geochem to define pipeline drill targets

➤ Multiple targets with genuine district scale

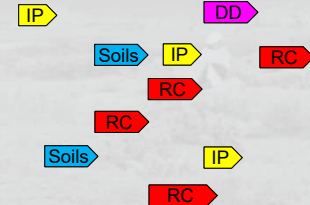


## LACHLAN PROJECT » Progressing multiple targets

- Wilga Flats: Geochem & IP to refine drill targets + drilling
- Breakfast Creek: Geochem & IP to refine drill targets + drilling
- Prince of Wales: Drill ready
- Dunedoo: Geochem & IP to define drill targets + drilling
- Temora South: Field reconnaissance, Geochem, IP
- Junee (20%) JV/Fairholme JV (51%) JVs: **Newmont** drilling

➤ Multiple Au & Cu-Au discovery opportunities

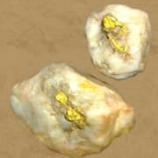
## Jan Feb Mar Apr May Jun Jul Aug Sep Oct Nov Dec



## KOONENBERRY PROJECT » Dominant position in underexplored frontier belt (2,478km<sup>2</sup>)

- Bellagio: 50m wide Central Gold Zone target defined
- Royal Oak Fault: 3 priority targets along 20km structure defined
- Pipeline Projects: +34km of undrilled Au soil anomalies

➤ Multi million ounce Au potential

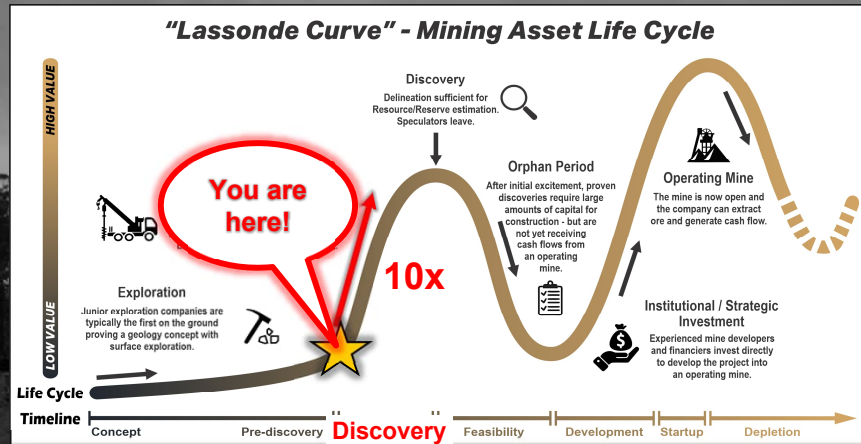


# KOONENBERRY GOLD

## Discovering Gold and Copper in NSW

Key ingredients for success + value creation in place

<b>Geology</b>	<ul style="list-style-type: none"> <li>» Exciting Au and Cu-Au Portfolio</li> <li>» <b>Multiple discovery opportunities</b></li> </ul>
<b>Scale</b>	» 4,360km <sup>2</sup> significant land package
<b>Team</b>	<ul style="list-style-type: none"> <li>» Experienced in Au &amp; Cu-Au exploration</li> <li>» Track record of discoveries</li> </ul>
<b>Support</b>	» Lion Selection Group, Lowell Resources Fund
<b>Cash <sup>(1)</sup></b>	» Well funded for discovery with <b>\$6.3M cash</b>
<b>Value <sup>(2)</sup></b>	» <b>Strong pipeline</b> » <b>Leveraged to discovery</b>
<b>Timing</b>	<ul style="list-style-type: none"> <li>» <b>Enmore: District discovery in the making</b></li> <li>» <b>Lachlan: Multiple targets advancing</b></li> </ul>



★ DD01: 170m @ 1.75g/t Au from 77m inc. 18.3m @ 9.95g/t Au from 172.9m
★ DD02: 172.9m @ 2.07g/t Au from 171m inc. 25m @ 5.23g/t Au from 194m
★ DD03: 102m @ 1.10g/t Au from 184m inc. 9.7m @ 3.57g/t Au from 252.3m
★ DD04: 149.5m @ 0.94g/t Au from 184.5m inc. 91.5m @ 1.15g/t Au from 184.5m
★ DD05: 150.5m @ 0.71g/t Au from 230m inc. 10m @ 2.36g/t Au from 360m
★ DD06: 80.5m @ 1.45g/t Au from 193.5m inc. 9.7m @ 3.18g/t Au from 210.5m
★ DD07: 60m @ 0.70g/t Au from 105m inc. 17m @ 1.67g/t Au from 105m
★ DD13: 90m @ 0.72g/t Au from 135m inc. 36m @ 1.28g/t Au from 178m
★ DD15: 45m @ 1.01g/t Au from 340m and 0.5m @ 26.4g/t Au from 368.4m

Notes: 1. Cash at 31/12/2025.  
2. ASX:KNB 17/10/2024; 02/04/2025; 14/04/2025; 29/04/2025; 20/05/2025; 06/06/2025; 23/06/2025; 04/08/2025; 05/02/2025.



For further information, please contact:

**Dan Power**  
**Managing Director**

[dan.power@koonenberrygold.com.au](mailto:dan.power@koonenberrygold.com.au)  
+61 8 6245 9869

**Brett Tucker**  
**Company Secretary**

[brett.tucker@access-corp.com.au](mailto:brett.tucker@access-corp.com.au)  
+61 8 6245 9869

**Nathan Ryan**  
**Investor Relations**

[nathan.ryan@nwrcommunications.com.au](mailto:nathan.ryan@nwrcommunications.com.au)  
+61 420 582 887

ASX: KNB



SUBSCRIBE





KOONENBERRY GOLD

### Board and Management



**Paul Harris** (BCom, M.MinEng, GAICD)  
Chairman and Non-Executive Director



**Dan Power** (BSc Hons, MSc (Econ. Geol),  
MAICD, AIG, SEG)  
Managing Director



**Anthony McIntosh** (BCom, GAICD)  
Non-Executive Director



**George Rogers** (BIB)  
Non-Executive Director



**Darren Glover** (BSc Hons, AusIMM)  
Non-Executive Director



**Paul Wittwer** (BSc Hons, AIG, AusIMM,  
SEG)  
Exploration Manager



**Bryn Ellingworth** (BSc Hons, MSc  
(Econ. Geol), AIG, SEG)  
Principal Geologist

### Experienced Team – Focused on Discovery

- Experienced professional with +25 years in finance and investment banking including Citibank (Head of Metals and Mining), Bankers Trust and Merrill Lynch
- Currently Non-Exec Chair of Highfield Resources

- Geologist with 28 years' experience in exploration, project generation, evaluation and management in Australia, China, SE Asia, SW Pacific and Mongolia
- Former Newmont Country Manager and CEO of Tiline Mongolia

- Extensive experience in investment marketing, investor relations and strategy
- Non-Executive Director of several unlisted and not-for-profit organisations

- Extensive experience in capital and commodity markets, investor relations and strategic planning as well as corporate strategy, advisory and M&A
- Formerly Managing Director of KNB. Co-founder and Director of White Hutt

- Geologist with 27 years' experience in minerals exploration, mining, resource definition and business development across Australia and Sth America
- Co-Founder of Gilmore Metals. Previous senior roles with Gold Fields, Newcrest, RGC

- Geologist with +20years' Australian and international experience in orogenic and epithermal gold systems as well as in silver and copper
- Formerly Thor Mining and Southern Gold Exploration Manager covering greenfields, near mine exploration, mine geology, resource modelling and development

- Geologist with 10years' experience in mineral exploration and resource definition across various commodities and deposit styles including precious and base metals
- Strong background in NSW mineral systems with demonstrated success in the Lachlan Fold Belt and New England Fold Belt, NSW

#### Broker Coverage



ASX: KNB



SUBSCRIBE

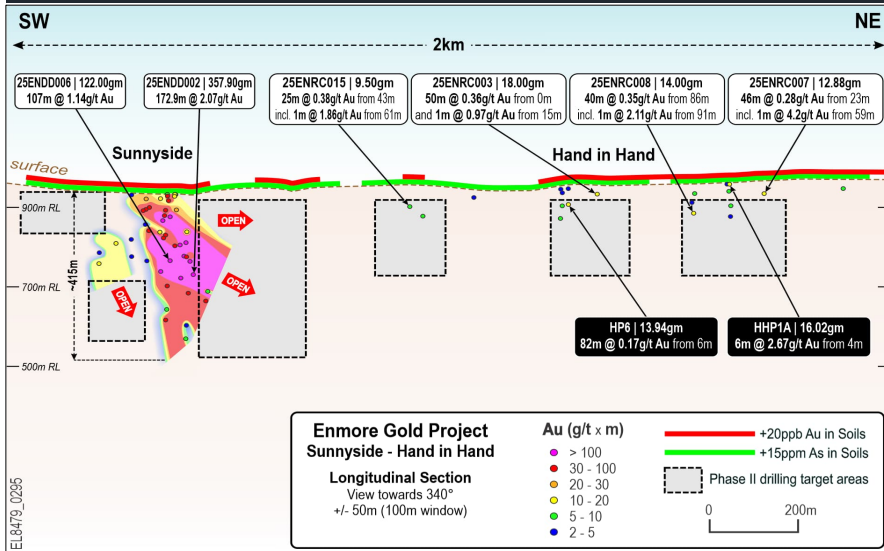


# Enmore Project » Sunnyside Shear Zone

Next steps for growth + discovery » 10,000m Phase II drilling ongoing

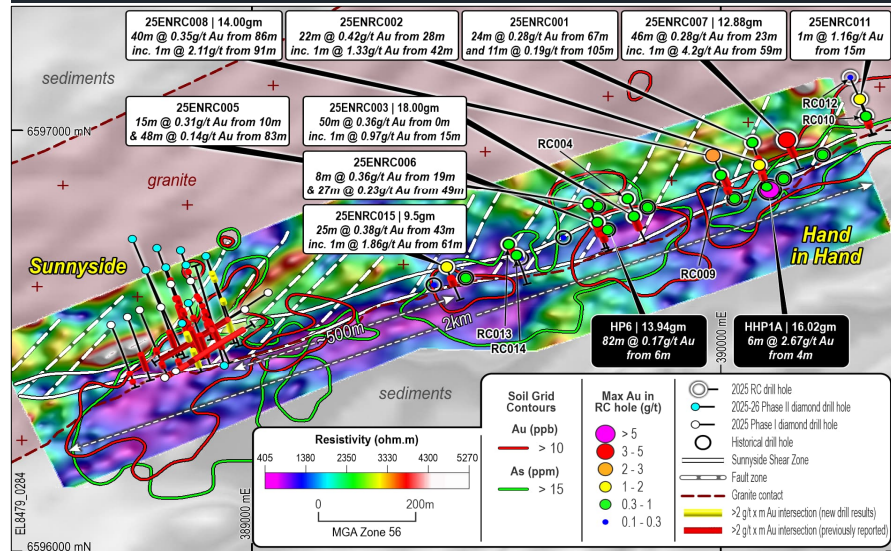
## Sunnyside Prospect » Extensional drilling

- Target up dip (near surface) + down dip/plunge (at depth) extensions
    - Determine continuity of mineralisation
  - Target strike extensions mainly to NE along shear zone
    - Determine size of the Sunnyside system
- Mineralisation +415m depth (Hillgrove +900m; Au grade increasing)



## Sunnyside to Hand in Hand Prospect » Discovery drilling

- Multiple targets defined along +2km long prospective shear zone
  - Gold + Arsenic soil anomalies
  - Second order structures interpreted similar to Sunnyside
  - Preferred granite host rock
  - Broad zones of highly anomalous gold intersected in RC drilling (1)
- Potential for "Sunnyside-style" repetitions
- Plan to test with deeper drilling (HG Au zones at Sunnyside +140m)



Notes: 1. ASX:KNB 12/01/2026.

# Enmore Project » Sunnyside Prospect

## Multi-stage, granite-hosted, epizonal orogenic gold system

### Simplified Paragenesis:

#### Pre-mineral »

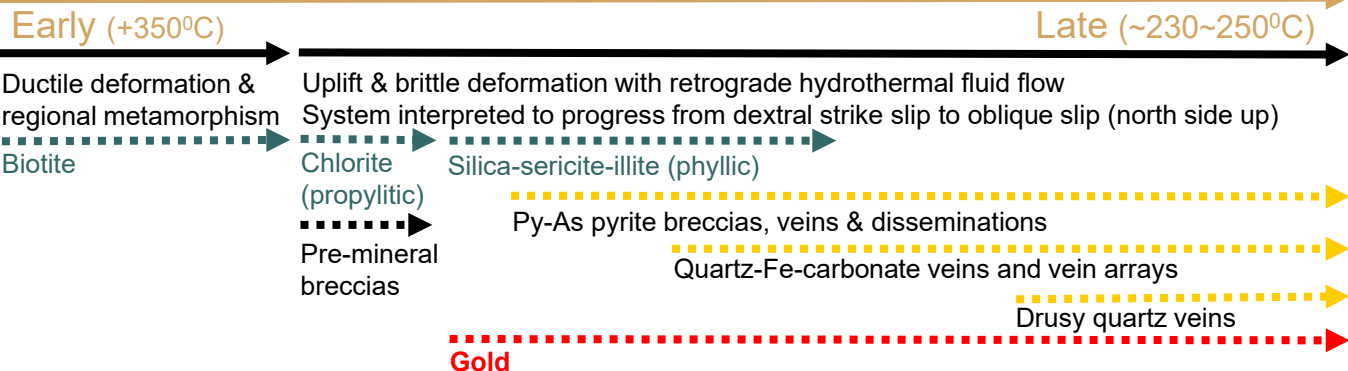
- Emplacement of porphyritic biotite monzogranite (granite) into sedimentary package along deep-seated structures
- Early structural preparation during peak metamorphism with development of penetrative & locally mylonitic fabric (Sunnyside Shear Zone)

#### Syn-mineral »

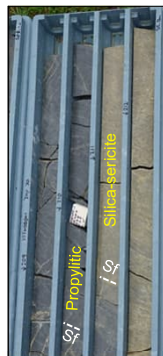
- Au** Silica-sericite alteration utilising shear fabric
- Au** Sulphide-bearing tectonic-hydrothermal breccias & veins
- Au** Quartz-sulphide veins
- Au** Fe-carbonate alteration +veins & vein arrays
- Au** Drusy quartz veins ±sulphide ±adularia +coarse free gold

#### Post-mineral »

- Quartz-carbonate-chlorite vns



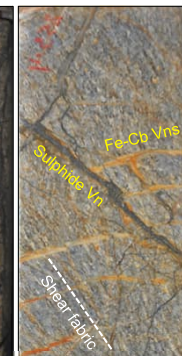
Mylonitic Granite  
(25ENDD004: 159m)



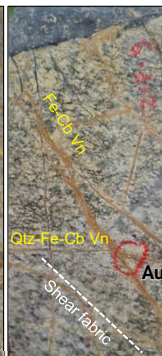
~0.1-0.3g/t Au  
Early alteration  
(25ENDD001: 208-212m)



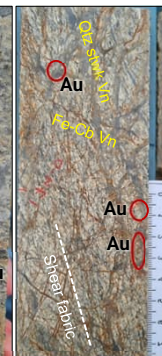
2.62g/t Au  
Sulphide Bxx  
(25ENDD002: 276.4m)



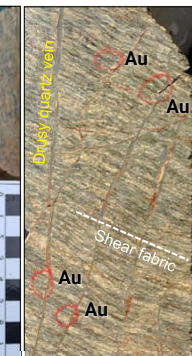
2.35g/t Au  
Fe-Cb +Sulph  
(25ENDD003: 254m)



28.7g/t Au  
Qtz-Fe-Cb Vns  
(25ENDD002: 217m)



144.5g/t Au  
Qtz+Fe-Cb Stwk  
(25ENDD001: 173.8-174m)



15.8g/t Au  
Drusy qtz Vns  
(OKDD001: 187-188m)

# Lachlan Project » Dunedoo

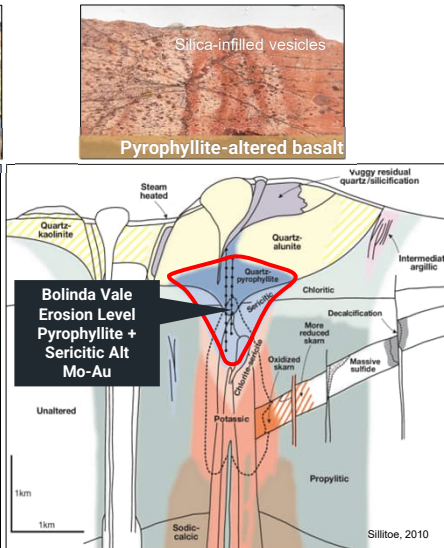
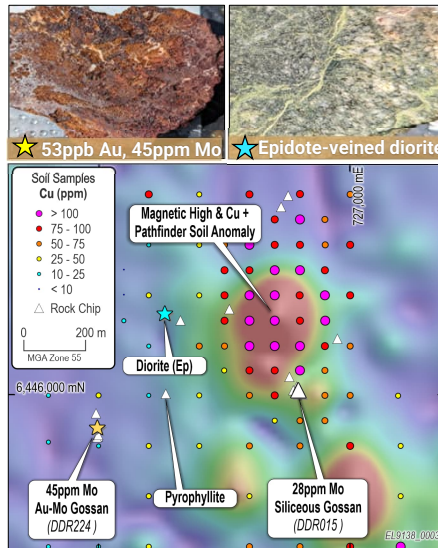
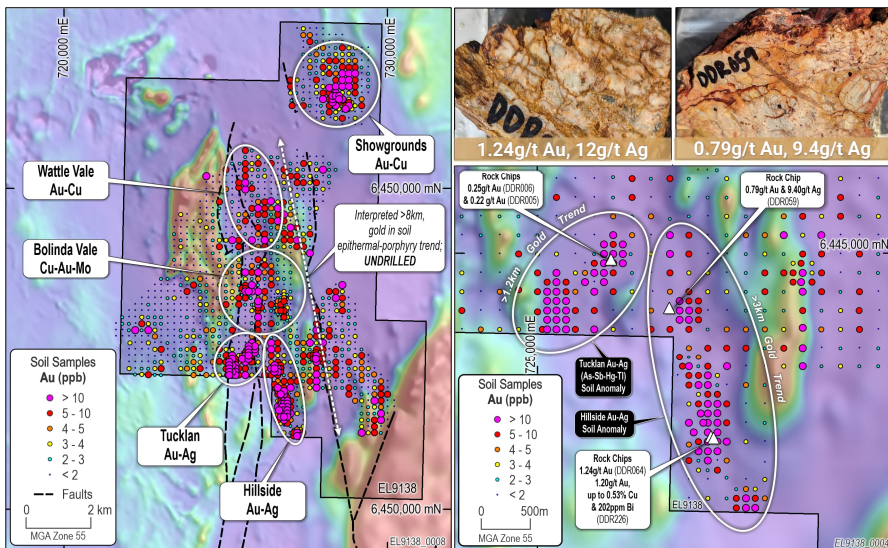
65km north of 491 Moz Ag Eq<sup>(1)</sup> Bowdens Silver Mine » **Not a single drillhole**

## +8km long gold soil anomaly » **Completely untested**

- Interpreted prospective Macquarie Arc geology
- **Extensive alluvial gold (Tucklan alluvials); source not identified**
- Magnetite destructive acid alteration along structural trend
- **1.24g/t Au, 12g/t Ag (DDR064); 0.79g/t Au, 9.4g/t Ag (DDR059) (2)**
- Epithermal Au-Ag and porphyry Cu-Au potential
- **Multiple targets identified » Untested by drilling**

## Bolinda Vale Prospect » **Porphyry Cu-Au Target**

- **450 x 300m high amplitude “bullseye” magnetic anomaly**
- Coincident Cu-Mo + pathfinder element soil anomaly
- **Alteration assemblage indicates prospective erosional level**
- Propylitic altered (ep-chl-cb-alb-ser) andesitic volcanoclastics + hornblende-phyrlic diorite (fertile). Pyrophyllite altered basalt to west
- **Forward Plan » IP geophysics & advance to drill ready**



Notes: 1. Silver Mines ASX:SLV 10/09/2024; 2. ASX:KNB 17/10/2024.

# Lachlan Project » Prince of Wales (100% owned)

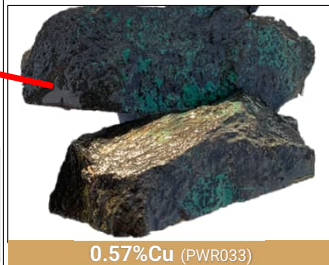
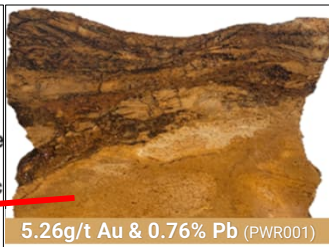
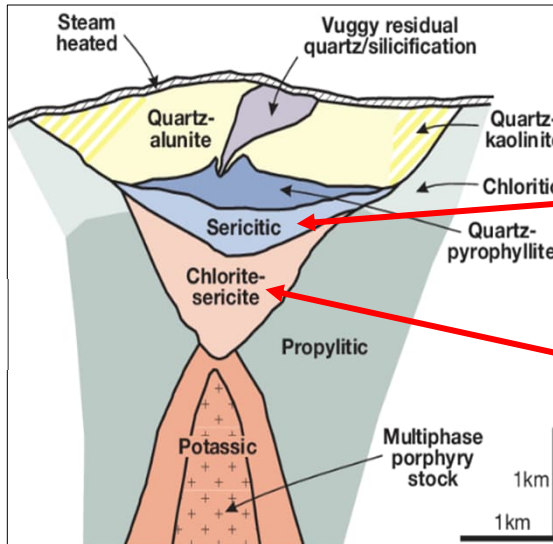
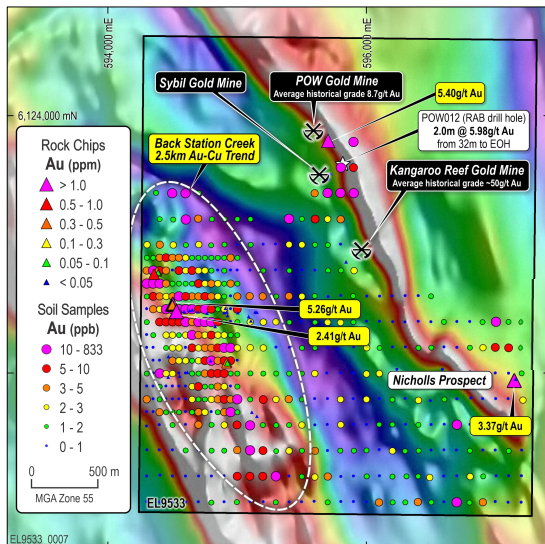
## Orogenic gold and Porphyry copper-gold targets » Drill ready

### POW/Sybil Prospects » Historical workings, largest in Gundagai

- 1.8km underground workings;170m deep (26.6k oz Au @ 8.7g/t Au) <sup>(1)</sup>
- 800m x 300m soil anomaly (>6ppb Au, max 439ppb Au) <sup>(2)</sup>
- Soil anomaly open, nb Kangaroo Reef mine 300m south
- **Magnetite destructive alteration** (sericite-clay-qtz-carbonate-pyrite)
- Limited drilling: **2m @ 5.98g/t Au** from 32m to EOH (POW012) <sup>(1)</sup>
- **Limited modern or systematic exploration » Discovery opportunity**

### Back Station Creek Prospect » Evidence for Cu-Au porphyry system <sup>(4)</sup>

- **Geology:** Andesitic-dioritic intrusions
- **Geochemistry:** 2.5km tCu-Au-Mo +Au-Ag-Pb-Zn-Bi-Te
- **Mineralisation:** 5.26g/t Au <sup>(3)</sup> and 0.57% Cu <sup>(2)</sup>
- **Alteration:** phyllic, potassic hornfels, propylitic
- **Geophysics:** Structurally complex magnetic signature
- **Forward Plan» Drill ready with drilling test in H1**

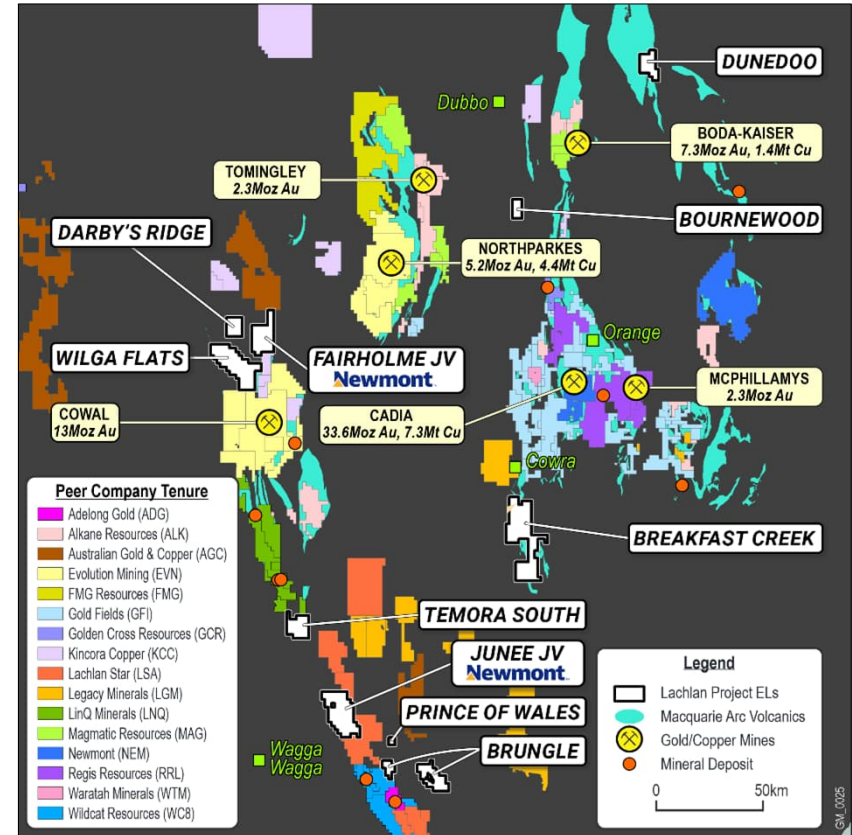
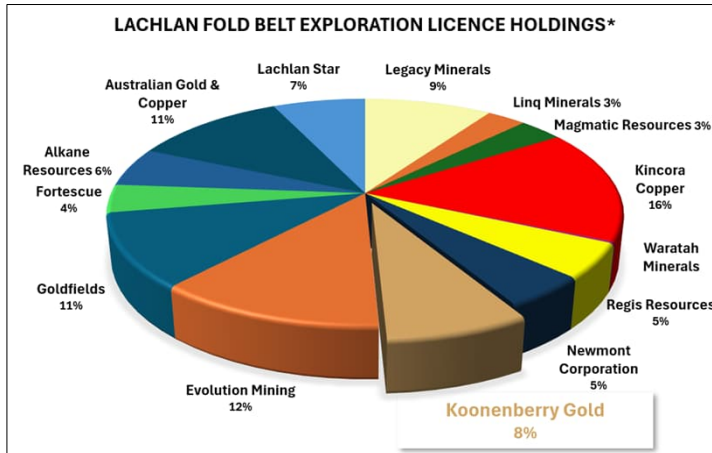


Notes: 1. ASX:KNB 17/10/2024; 2. ASX:KNB 08/07/2025; 3. ASX:KNB 201/01/2025; 4. Sillitoe, 2010, Porphyry Copper Systems: Economic Geology, v. 105 p. 3-41.

# Appendix 1

## Data used for Lachlan Fold Belt holdings

Company	Code	Km2* <sup>1</sup>	Market Cap (\$M)* <sup>2</sup>
Legacy Minerals	ASX:LGM	1931	35
Linq Minerals	ASX:LNQ	597	42
Magmatic Resources	ASX:MAG	673	21
Kincora Copper	ASX:KCC	3309	26
Waratah Minerals	ASX:WTM	46	235
Regis Resources	ASX:RRL	1022	
Newmont Corporation	ASX:NEM	957	
<b>Koonenberry Gold</b>	<b>ASX:KNB</b>	<b>1580</b>	<b>25</b>
Evolution Mining	ASX:EVN	2541	
Goldfields	NYSE:GFI	2177	
Fortescue	ASX:FMG	816	
Alkane Resources	ASX:ALK	1129	
Australian Gold & Copper	ASX:AGC	2344	58
Lachlan Star	ASX:LSA	1401	35



1. Selected Companies with granted EL's in Lachlan Fold Belt as of 09/10/2025 and 11/03/2026 for LNQ (Source: MinView);  
 2. Market Cap as of 09/03/2026. Source: Marketindex.com.au

# References

- 24/09/2021. Peters, J. Koonenberry Gold Pty Ltd Independent Geologist's Report - Koonenberry Gold Project 10 May 2021 contained in Koonenberry Gold Ltd Prospectus.
- 17/10/2024 (ASX:KNB). Transformational acquisition of exciting NSW Au and Cu/Au portfolio.
- 07/01/2025 (ASX:KNB). Initial fieldwork at Breakfast Creek confirms high-grade gold-copper along 6km trend.
- 16/01/2025 (ASX:KNB). Newmont commences drilling at Junee Cu-Au Project.
- 20/01/2025 (ASX:KNB). KNB identifies 4km gold trend at Prince of Wales Project.
- 11/02/2025 (ASX:KNB). KNB commences drilling at Enmore Gold Project.
- 19/02/2025 (ASX:KNB). Multiple zones of visible gold intersected at Enmore Gold Project.
- 25/02/2025 (ASX:KNB). KNB expands Enmore Gold Project NSW securing gold-antimony targets.
- 26/02/2025 (ASX:KNB). Visible gold in second drill hole at Enmore Gold Project.
- 10/03/2025 (ASX:KNB). Newmont commences drilling at Fairholme Cu-Au JV Project.
- 17/03/2025 (ASX:KNB). More visible gold zones identified at Enmore Gold Project.
- 02/04/2025 (ASX:KNB). KNB returns 170m @ 1.75g/t gold incl. 18.3m at 9.95g/t gold from first drillhole at Enmore Gold Project, NSW.
- 14/04/2025 (ASX:KNB). KNB returns 172.9m @ 2.07g/t gold incl. 25m at 5.23g/t gold from second drillhole at Enmore Project, NSW.
- 23/04/2025 (ASX:KNB). KNB intersects visible gold in fifth drill hole at Enmore Project.
- 29/04/2025 (ASX:KNB). KNB returns 102m at 1.10gt gold including 9.7m at 3.57gt from third drillhole.
- 30/04/2025 (ASX:KNB). KNB intersects multiple zones of visible gold in sixth drill hole at Enmore Project.
- 13/05/2025 (ASX:KNB). KNB expands Sunnyside gold system to more than 230m strike.
- 20/05/2025 (ASX:KNB). KNB returns 149.5m at 0.94g/t Au from fourth drillhole at Enmore Project.
- 06/06/2025 (ASX:KNB). KNB returns 150m at 0.71g/t Au including 21m at 1.65g/t Au from fifth drill hole.
- 23/06/2025 (ASX:KNB). KNB returns 80.5m at 1.45gt gold including 9.7m at 3.18gt gold from sixth drillhole.
- 24/06/2025 (ASX:KNB). KNB extends Sunnyside Prospect by 1.6km to over 2km strike potential.
- 27/06/2025 (ASX:KNB). Newmont completes fully-funded drilling at Junee and Fairholme JV Projects.
- 08/07/2025 (ASX:KNB). KNB identifies gold and copper targets at Prince of Wales Project.
- 21/07/2025 (ASX:KNB). Quarterly Activities Report for the period ending 30 June 2025.
- 22/07/2025 (ASX:KNB). KNB identifies target on parallel shear zone to Sunnyside at Enmore Project.
- 04/08/2025 (ASX:KNB). KNB extends mineralised zone to over 260m strike and highlights depth and strike potential.
- 05/08/2025 (ASX:KNB). KNB identifies priority drill targets along Sunnyside Shear Zone in IP Geophysics.
- 13/10/2025 (ASX:KNB). KNB commences 10,000m drilling at Enmore Gold Project.
- 15/10/2025 (ASX:KNB). KNB commences district scale airborne magnetic survey.
- 17/10/2025 (ASX:KNB). Quarterly Activities Report for the period ending 30 September 2025.
- 20/10/2025 (ASX:KNB). KNB triples the potential strike length of the Enmore Gold Project, NSW.
- 18/11/2025 (ASX:KNB). KNB strikes visible gold in first two drill holes extending system to 425m vertically at Enmore Gold Project, NSW.
- 16/12/2025 (ASX:KNB). KNB hits more visible gold at Enmore Gold Project, NSW.
- 12/01/2026 (ASX:KNB). KNB RC drilling defines 2km mineralised trend at Hand in Hand.
- 19/01/2026 (ASX:KNB). Quarterly Activities Report for the period ending 31 December 2025.
- 05/02/2026 (ASX:KNB). KNB extends mineralised zone to 415m and identifies high grade at depth.
- 17/03/2026 (ASX:KNB). KNB identifies shallow high-grade gold and extends mineralised zone.

# References

- Alkane (ASX:ALK), 2023. Boda Resource Update Increases Gold and Copper Grades, 14 December 2023.
- Catalyst Minerals (ASX:CYL), 17/05/2022. Gold grades of up to 831g/t at Lawry Prospect, Tandarra.
- China Molybdenum Company Limited, 2022 Annual Report, <http://www.cmocinternational.com>
- De Grey Mining (ASX:DEG), 11/02/2020. Corporate Presentation – Hemi Discovery, Mallina Gold Province.
- De Grey Mining (ASX:DEG), 22/04/2020. Brolga and Aquila drilling update.
- De Grey Mining (ASX:DEG), 01/05/2021. Large gold system defined at Crow.
- De Grey Mining (ASX:DEG), 01/06/2021. Investor Presentation – Mallina Gold Project Site Visit.
- De Grey Mining td (ASX:DEG), 14/11/2024. Hemi Gold Project Mineral Resource Estimate (MRE) 2024.
- Evolution Mining (ASX:EVN), 2023. Mining Annual Mineral Resources and Ore Reserves Statement.
- Evolution Mining (ASX:EVN), 07/092017. Cowal Gold Mine, District Geology Overview.
- Larvotto Resources (ASX:LRV), 22/12/2023. Hillgrove Acquisition Amended Release 1.4Moz @ 6.1g/t AuEq Gold-Antimony Hillgrove Project Acquired (22/12/2023).
- Larvotto Resources (ASX:LRV), 11/07/2024. Exploration drilling commences at Hillgrove.
- Linq Minerals (ASX:LNQ), 12/02/2026. Significant shallow gold intersection 95m @ 2.14g/t Au eq 160m south of open pit.
- Manhattan Corporation (ASX:MHC), 06/12/2021. Drilling intersects 8m at 40.5g/t Au.
- Manhattan Corporation (ASX:MHC), 23/03/2022. Outstanding wide zones of shallow gold.
- Newmont 2025 (ASX:NEM). Mining Annual Mineral Resources and Ore Reserves Statement, <https://operations.newmont.com/reserves-and-resources>.
- North Stawell Minerals (ASX:NSM), 2021.01.31. December 2021 Quarterly Activities Report, p14.
- North Stawell Minerals (ASX:NSM), 21/06/2023. Technical Update June 2023 – OREAS Vic Round Up Conference.
- Regis Resources (ASX:RRL), 2023. Annual Mineral Resource and Ore Reserve Statement 8 June 2023.
- Silver Mines (ASX:SVL), 2024. Investor Marketing, Precious Metals Summit, Beaver Creek (10/09/2024).
- Southern Cross Gold (ASX: SXG), 01/10/2025. Southern Cross God reinforces continuity in Rising Sun.
- Waratah Minerals (ASX: SXG), 04/08/2025. Investor Presentation, Diggers & Dealers Mining Forum.
- Alan Wilson, 2022. GeoAqua Consultants Ltd, Internal Report for Gilmore Metals.
- Buchhorn, D.A. 1972. Exploration report EL 303, Obley - Yeoval area. R00025116 (GS1971/052), p30.
- Cayley, R. A., et al., 2011. Crustal architecture of central Victoria: results from the 2006 deep crustal reflection seismic survey.
- Crawford, Cooke and Fanning, 2007. Geochemistry and age of magmatic rocks in the unexposed Narromine, Cowal and Fairholme Igneous Complexes in the Ordovician Macquarie Arc, New South Wales.
- Direen, N. G., 2021. Koonenberry seismic reinterpretation of reprocessed data. Internal report for Koonenberry Gold Ltd.
- Foster, J. T., 1977. Exploration report ELs 761 and 819, Wamboyno, R00011956.
- Gilligan, L. B., 1980. An inspection of the Prince of Wales Gold Mine, Gundagai. R00011444 (GS1980/010).
- Glen, Quinn, Cooke., 2012. The Macquarie Arc, Lachlan Orogen, New South Wales: its evolution, tectonic setting and mineral deposits, Episodes Vol. 35, No 1.
- Greenfield J. and Reid, W., 2006. Orogenic gold in the Tibooburra area of northwestern NSW a ~440 Ma ore system with comparison to the Victorian Goldfields.
- Harris, Cooke, Cuison, Groome, Wilson, Fox, Holliday, Tosdal., 2020. Geologic Evolution of Late Ordovician to Early Silurian Alkalic Porphyry Au-Cu Deposits at Cadia, New South Wales, Australia, SEG Special Publication 23.
- Holliday and Cooke, 2007. Advances in Geological Models and Exploration Methods for Copper + Gold Porphyry Deposits "Proceedings of Exploration 07: Fifth Decennial International Conference on Mineral Exploration."
- Lye A., Crook G., Kolff van Oosterwijk L., 2006. The Discovery History of the Northparkes Deposits. Mines & Wines 2006 – Mineral Exploration in New South Wales – SMEDG & DPI Geological Survey.
- Lewington, G., 1983. EL1697 – Enmore, NSW, Six-Monthly report for the period ending 17 February 1983. Getty Oil Development Company Ltd. R00015006.
- McDonald, 2006. Third Annual Exploration Report R00002515 p290. Co-ords from Minview Gold Occurrence.
- Miller, J., et al., 2005. Evolution of a reworked orogenic zone: The boundary between the Delamarian and Lachlan fold belts, southeastern Australia.
- Phillips, D., et al., 2012. Timing of gold mineralisation in the western Lachlan Orogen, SE Australia: A critical overview.
- Phillips, G. N. (Ed), 2017. Australian Ore Deposits (The Australasian Institute of Mining and Metallurgy: Melbourne).
- Smart, G and Wilkins, C., 1997. The Geology of the Browns Creek Gold-Copper Skarn Deposit, Blaney, NSW
- Victorian State Government, 2021. Earth Resources Regulation Annual Statistical Report FY2020-21.
- Willman, et al., 2010. Crustal-Scale Fluid Pathways and Source Rocks in the Victorian Gold Province, Australia: Insights from Deep Seismic Reflection Profiles (Society of Economic Geologists, Inc. Economic Geology, v. 105, pp. 895–915).
- Unknown Author, 1976. First report ELs 761 and 819 Wamboyno, R00013497. Coordinates from Minview Geochemistry.