

14 August 2017



**Board:**

Colin Locke (Exec. Chairman)

David Palumbo (Non-Exec. Director)

Timothy Hogan (Non-Exec. Director)

**Capital Structure:**

100,000,000 Fully Paid Shares

48,000,000 Options @ 10c exp 31/05/19

10,893,878 Options @ 40c exp 12/12/19

**ASX Codes:**

KTA, KTAOB

**Projects**

Dalgaranga, WA, Ta-Li-Rb

Mac Well, WA, Beryl

## Fresh Geochemistry Supports Rubidium Enrichment

- **High-grade Rb results returned from pegmatite, including:**
  - **Sample 17D022 - 3463.9ppm Rb**
  - **Sample 17D023 - 2440.5ppm Rb**
- **Thirteen (or 65%) of the 20 samples taken from the waste dump report anomalous rubidium levels**
- **Geochemistry is most elevated adjacent to structures, where pegmatite occurrences were also noted to be thickest**
- **Drilling to concentrate on zones of maximum thickness and grade within pegmatite**

**Krakatoa Resources Ltd** (“Krakatoa” or “the Company”, ASX: **KTA**) is pleased to provide the following update as the Company marches towards its maiden drill programme at Dalgaranga. Recent chip sampling confirmed the previously delivered high-grade rubidium<sup>1</sup> results across the waste dump and elsewhere in the tenure. Pleasingly, a further anomalous Li result was returned from a pegmatite cropping out south of the existing open pit. All areas are accessible in the forthcoming drill programme.

The sampling was undertaken during a pre-drill site reconnaissance that confirmed the drill site locations, rig access, and rig-type suitability. The chip sampling focused on two areas – the existing waste dump and a previously unmapped pegmatite outcropping in the southern extent of the tenement (Figure 1).

Thirteen (or 65%) of the 20 samples taken from the waste dump report anomalous rubidium levels, with a peak value of 2133.8ppm Rb. Most values range between 700 and 1300 ppm Rb. Peak Rb results of 3463.9 (Sample 17D022) and 2440.5 ppm (Sample 17D023) were returned from near the anomalous pegmatite sampled in the prior round. The later also returned a peak lithium value of 1398.7ppm (or 0.14%) Li (Table 1).

---

<sup>1</sup> Results exceeding 800ppm Rb are considered anomalous

**Registered office:**

Level 11, London House, 216 St Georges Terrace, Perth, W.A. 6000

**Ph:** +618 9481 0389

**Fax:** +618 9463 6103

**W:** [www.krakatoaresources.com](http://www.krakatoaresources.com)

**M:** [info@krakatoaresources.com](mailto:info@krakatoaresources.com)

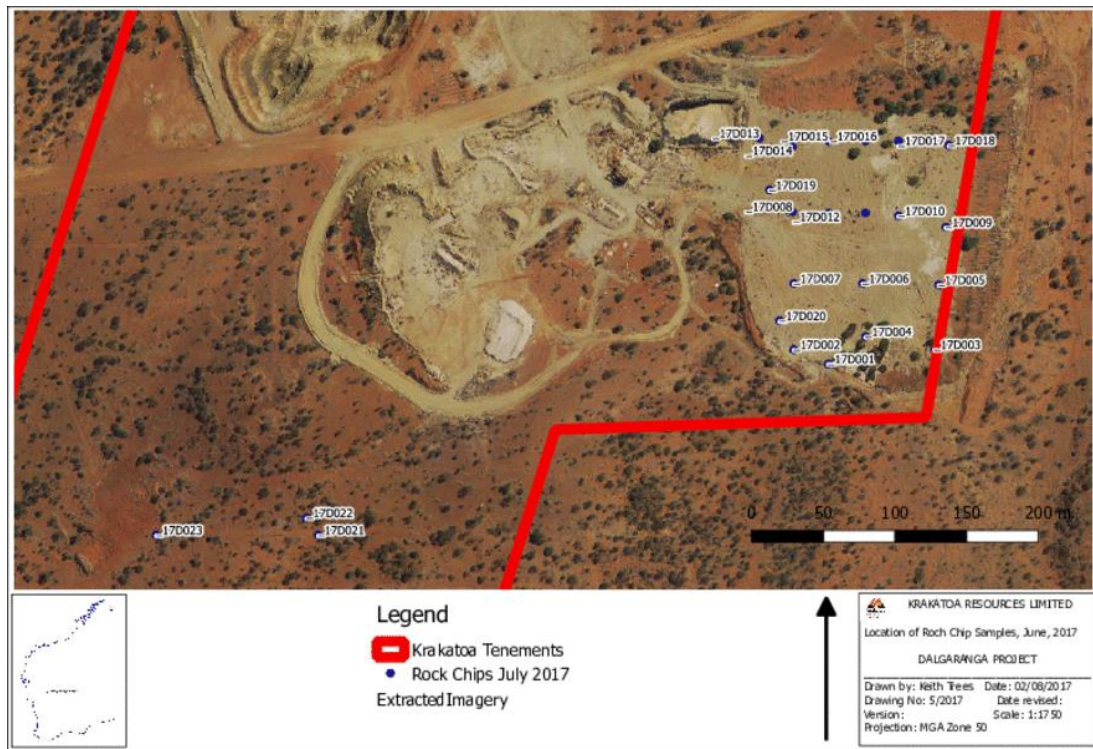


Figure 1: Rock chip sampling location map

## Historical drilling evaluation

The historical drilling was compiled and evaluated to assist with planning. The drill sections support the pegmatite as forming a distinct, northeast-trending corridor that deepens and thickens in the same direction. The combined recent and earlier chip results support the geochemistry as most elevated adjacent to internal or bounding northeast-trending structures.

## Upcoming drill programme

The Company has moved quickly to progress Reverse Circulation (RC) drilling of the outlined Li-Ta-Rb-Nb mineralisation and pegmatite near the open pit with an expanded 12 vertical hole program. No significant heritage delays in drilling approvals are envisaged, as drilling will occur in previously disturbed areas, including along existing cleared drill access.

Drilling will assess grade along strike of mineralisation exposed in the open pit, where the pegmatite occurrences are known to thicken. The southernmost drill line (Figure 2) will test areas where the presence of zinnwaldite and lepidolite was noted and have returned anomalous Li, Rb, Nb, or Ta geochemistry.

### Registered office:

Level 11, London House, 216 St Georges Terrace, Perth, W.A. 6000

Ph: +618 9481 0389 Fax: +618 9463 6103 W: [www.krakatoaresources.com](http://www.krakatoaresources.com) M: [info@krakatoaresources.com](mailto:info@krakatoaresources.com)

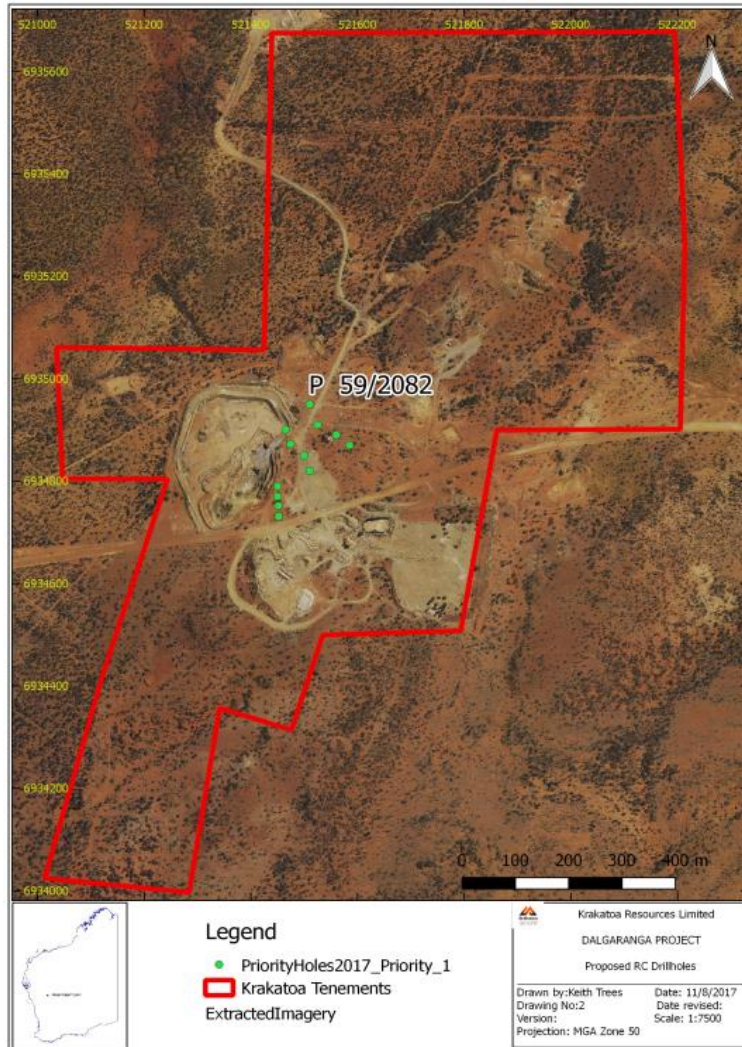


Figure 2: Drill hole locations for upcoming programme

**FOR FURTHER INFORMATION:**

Colin Locke

Executive Chairman

+61 457 289 582

**Competent person's statement:**

The information in this announcement that relates to Dalgara Project Exploration Results is based on information compiled and fairly represented by Mr Jonathan King, consultant geologist, who is a Member of the Australian Institute of Geoscientists and employed by Collective Prosperity Pty Ltd. Mr King has sufficient experience relevant to the style of mineralisation and type of deposit under consideration, and to the activity which he has undertaken, to qualify as a Competent Person as defined in the 2012 Edition of the Joint Ore Reserves Committee (JORC) Australasian Code for Reporting of Exploration Results, Mineral Resources and Ore Reserves. Mr King consents to the inclusion in this report of the matters based on this information in the form and context in which it appears.

**Registered office:**

Level 11, London House, 216 St Georges Terrace, Perth, W.A. 6000

Ph: +618 9481 0389 Fax: +618 9463 6103 W: [www.krakatoaresources.com](http://www.krakatoaresources.com) M: [info@krakatoaresources.com](mailto:info@krakatoaresources.com)

## Forward Looking Statements

Forward-looking statements are statements that are not historical facts. Words such as “expect(s)”, “feel(s)”, “believe(s)”, “will”, “may”, “anticipate(s)” and similar expressions are intended to identify forward-looking statements. These statements include, but are not limited to statements regarding future production, resources or reserves and exploration results. All of such statements are subject to certain risks and uncertainties, many of which are difficult to predict and generally beyond the control of the Company, that could cause actual results to differ materially from those expressed in, or implied or projected by, the forward-looking information and statements. These risks and uncertainties include, but are not limited to: (i) those relating to the interpretation of drill results, the geology, grade and continuity of mineral deposits and conclusions of economic evaluations, (ii) risks relating to possible variations in reserves, grade, planned mining dilution and ore loss, or recovery rates and changes in project parameters as plans continue to be refined, (iii) the potential for delays in exploration or development activities or the completion of feasibility studies, (iv) risks related to commodity price and foreign exchange rate fluctuations, (v) risks related to failure to obtain adequate financing on a timely basis and on acceptable terms or delays in obtaining governmental approvals or in the completion of development or construction activities, and (vi) other risks and uncertainties related to the Company’s prospects, properties and business strategy. Our audience is cautioned not to place undue reliance on these forward-looking statements that speak only as of the date hereof, and we do not undertake any obligation to revise and disseminate forward-looking statements to reflect events or circumstances after the date hereof, or to reflect the occurrence of or non-occurrence of any events.

**TABLE 1 – RESULTS FOR THE MAIN ELEMENTS OF INTEREST**

Sample_ID	Easting_MGA50	Northing_MGA50	Rb	Li	Ta	Nb	Sn
17D001	521725	6934545	1184.12	361.2	55.08	32.81	32.7
17D002	521701	6934555	1023.2	307.5	48.68	35.91	26.4
17D003	521806	6934555	594.46	186.2	143.17	22.93	14.9
17D004	521751	6934564	1080.18	322.3	60.52	37.91	27.8
17D005	521802	6934600	1077.84	323.9	37.35	30.38	28.8
17D006	521749	6934601	708.1	227.7	41.29	37.91	19.7
17D007	521701	6934601	447.79	147.3	28.85	20.19	11.8
17D008	521700	6934651	952.08	285.9	30.74	35.32	24.3
17D009	521807	6934640	1348.8	368.6	63.79	62.81	33.9
17D010	521774	6934648	924.34	299.9	48.6	34.51	24.8
17D011	521751	6934650	711.93	261.8	33.22	43.1	19.5
17D012	521725	6934650	675.94	243.3	21.82	25.35	18.3
17D013	521677	6934702	1034.69	290.3	33.06	30.12	27.1
17D014	521700	6934696	670.34	199.9	26.64	18.09	17.3
17D015	521725	6934700	742.84	240.4	34.02	40.77	19.8
17D016	521751	6934700	901.97	277	39.19	40.4	22.3
17D017	521774	6934700	1425.41	414.8	57.11	35.19	35.5
17D018	521809	6934697	2133.8	526.9	502.15	64.16	58.9
17D019	521684	6934666	1560.88	407.7	52.24	41.22	42.5
17D020	521691	6934575	1098.76	356	41.95	31.56	35.9
17D021	521369	6934426	1642.61	168.1	45.18	58.48	64.3
17D022	521361	6934438	3463.9	469.8	73.51	232.8	135.8
17D023	521256	6934426	2440.5	1398.7	12.2	68.49	89.8

**Registered office:**

Level 11, London House, 216 St Georges Terrace, Perth, W.A. 6000

Ph: +618 9481 0389 Fax: +618 9463 6103 W: [www.krakatoaresources.com](http://www.krakatoaresources.com) M: [info@krakatoaresources.com](mailto:info@krakatoaresources.com)

## JORC Code, 2012 Edition – Table 1

### Section 1 Sampling Techniques and Data

(Criteria in this section apply to all succeeding sections.)

Criteria	JORC Code explanation	Comments
<b>Sampling techniques</b>	<i>Nature and quality of sampling (eg cut channels, random chips, or specific specialised industry standard measurement tools appropriate to the minerals under investigation, such as down hole gamma sondes, or handheld XRF instruments, etc). These examples should not be taken as limiting the broad meaning of sampling.</i>	Reconnaissance rock chip sampling conducted by visual identification of prospective lithological units within the historical Dalgaranga Open Pit and its surrounds.  Location of samples was determined using a Garmin handheld GPS unit with an accuracy of +/-5m
	<i>Include reference to measures taken to ensure sample representivity and the appropriate calibration of any measurement tools or systems used.</i>	Samples taken typically weighed in the range of 3 to 4kg
	<i>Aspects of the determination of mineralisation that are Material to the Public Report. In cases where 'industry standard' work has been done this would be relatively simple (eg 'reverse circulation drilling was used to obtain 1 m samples from which 3 kg was pulverised to produce a 30 g charge for fire assay'). In other cases more explanation may be required, such as where there is coarse gold that has inherent sampling problems. Unusual commodities or mineralisation types (eg submarine nodules) may warrant disclosure of detailed information.</i>	Standard approaches adopted
<b>Drilling techniques</b>	<i>Drill type (eg core, reverse circulation, open-hole hammer, rotary air blast, auger, Bangka, sonic, etc) and details (eg core diameter, triple or standard tube, depth of diamond tails, face-sampling bit or other type, whether core is oriented and if so, by what method, etc).</i>	No drilling reported

#### Registered office:

Level 11, London House, 216 St Georges Terrace, Perth, W.A. 6000

Ph: +618 9481 0389

Fax: +618 9463 6103

W: [www.krakatoaresources.com](http://www.krakatoaresources.com)

M: [info@krakatoaresources.com](mailto:info@krakatoaresources.com)

Criteria	JORC Code explanation	Comments
Drill Sample Recovery	<i>Method of recording and assessing core and chip sample recoveries and results assessed.</i>	No drilling reported
	<i>Measures taken to maximise sample recovery and ensure representative nature of the samples.</i>	No drilling reported
	<i>Whether a relationship exists between sample recovery and grade and whether sample bias may have occurred due to preferential loss/gain of fine/coarse material.</i>	No drilling reported
Logging	<i>Whether core and chip samples have been geologically and geotechnically logged to a level of detail to support appropriate Mineral Resource estimation, mining studies and metallurgical studies.</i>	No drilling reported
	<i>Whether logging is qualitative or quantitative in nature. Core (or costean, channel, etc) photography.</i>	Rock chip samples were visually logged and photographed
	<i>The total length and percentage of the relevant intersections logged.</i>	No drilling reported
Sub-sampling techniques and sample preparation	<i>If core, whether cut or sawn and whether quarter, half or all core taken.</i>	No drilling reported
	<i>If non-core, whether riffled, tube sampled, rotary split, etc and whether sampled wet or dry.</i>	3 to 4 kg rock chip sample was collected from the outcrops identified  Samples were collected from the pegmatite in a representative method so as to not introduce selective sampling bias
	<i>For all sample types, the nature, quality and appropriateness of the sample preparation techniques</i>	Whole rock samples were submitted to Intertek Perth Laboratories for crushing, grinding and assaying in accordance with industry best practices. No field preparation of samples was conducted
	<i>Quality control procedures adopted for all sub-sampling stages to maximise representivity of samples.</i>	The samples collected are representative of the outcropping pegmatite units
	<i>Measures taken to ensure that the sampling is representative of the in situ material collected, including for instance results for field duplicate/second-half sampling.</i>	Field duplicate samples were taken and high grade samples were re-assayed to confirm validity
Quality of assay data and laboratory tests	<i>Whether sample sizes are appropriate to the grain size of the material being sampled.</i>	Sufficient sample mass was collected to provide a representative sample of the coarse grained pegmatite
	<i>The nature, quality and appropriateness of the assaying and laboratory procedures used and whether the technique is considered partial or total.</i>	Samples were submitted to Intertek Laboratory in Perth for sample preparation and analysis by Intertek using four acid digest including Hydrofluoric, Nitric, Perchloric and Hydrochloric acids in Teflon Tubes with Inductively Coupled Plasma Mass Spectrometry Finish

**Registered office:**

Level 11, London House, 216 St Georges Terrace, Perth, W.A. 6000

**Ph:** +618 9481 0389

**Fax:** +618 9463 6103

**W:** [www.krakatoaresources.com](http://www.krakatoaresources.com)

**M:** [info@krakatoaresources.com](mailto:info@krakatoaresources.com)

Criteria	JORC Code explanation	Comments
Verification of sampling and assaying	<i>For geophysical tools, spectrometers, handheld XRF instruments, etc, the parameters used in determining the analysis including instrument make and model, reading times, calibrations factors applied and their derivation, etc.</i>	No geophysical results reported
	<i>Nature of quality control procedures adopted (eg standards, blanks, duplicates, external laboratory checks) and whether acceptable levels of accuracy (ie lack of bias) and precision have been established.</i>	Field duplicate samples were submitted for analysis
	<i>The verification of significant intersections by either independent or alternative company personnel.</i>	Samples were collected, visually inspected, logged and verified against assay results by consultant geologists of Krakatoa
	<i>The use of twinned holes.</i>	No drilling reported
	<i>Documentation of primary data, data entry procedures, data verification, data storage (physical and electronic) protocols.</i>	All field data is manually captured in the field, entered into excel spreadsheets and then imported into validated access databases
Location of Data Points	<i>Discuss any adjustment to assay data.</i>	Lab reported Li ppm assays have been converted to industry standard $Li_2O\%$ figures in line with industry practices using the formula ( $Li_2O\% = Li \times 2.153$ ). Similarly for Ta ppm to industry standard $Ta_2O_5$ ppm using the formula ( $Ta_2O_5 = Ta \times 2.442$ ), NbO ppm ( $NbO = Nb \times 1.172$ )
	<i>Accuracy and quality of surveys used to locate drill holes (collar and down-hole surveys), trenches, mine workings and other locations used in Mineral Resource estimation.</i>	Samples were located using a Garmin handheld GPS with an accuracy of +/- 5m
	<i>Specification of the grid system used.</i>	MGA94- Zone 50
Data spacing and distribution	<i>Quality and adequacy of topographic control.</i>	Topographic control using GPS is more than adequate for rock chip sampling.
	<i>Data spacing for reporting of Exploration Results.</i>	Sample points were selected on the basis of visual logging and thus were not collected on a regular grid or pattern
	<i>Whether the data spacing and distribution is sufficient to establish the degree of geological and grade continuity appropriate for the Mineral Resource and Ore Reserve estimation procedure(s) and classifications applied.</i>	Sampling reported is of reconnaissance nature and not for the purposes of the delineation of a mineral resource.
Orientation of data in relation to geological structure	<i>Whether sample compositing has been applied.</i>	No sample compositing conducted.
	<i>Whether the orientation of sampling achieves unbiased sampling of possible structures and the extent to which this is known, considering the deposit type.</i>	Sampling was conducted across specific points. Further systematic channel sampling is planned to be conducted.

**Registered office:**

Level 11, London House, 216 St Georges Terrace, Perth, W.A. 6000

Ph: +618 9481 0389

Fax: +618 9463 6103

W: [www.krakatoaresources.com](http://www.krakatoaresources.com)

M: [info@krakatoaresources.com](mailto:info@krakatoaresources.com)

Criteria	JORC Code explanation	Comments
	<i>If the relationship between the drilling orientation and the orientation of key mineralised structures is considered to have introduced a sampling bias, this should be assessed and reported if material.</i>	No drilling reported
Sample security	<i>The measures taken to ensure sample security.</i>	Samples were collected, transported and submitted to the laboratory by KTA consulting geologists.
Audits or reviews	<i>The results of any audits or reviews of sampling techniques and data.</i>	No audits or reviews have been conducted at this early stage of reconnaissance.

**Registered office:**

Level 11, London House, 216 St Georges Terrace, Perth, W.A. 6000

**Ph:** +618 9481 0389 **Fax:** +618 9463 6103 **W:** [www.krakatoaresources.com](http://www.krakatoaresources.com) **M:** [info@krakatoaresources.com](mailto:info@krakatoaresources.com)



## Section 2 Reporting of Exploration Results

(Criteria listed in the preceding section also apply to this section.)

Criteria	JORC Code explanation	Commentary
Mineral tenement and land tenure status	<i>Type, reference name/number, location and ownership including agreements or material issues with third parties such as joint ventures, partnerships, overriding royalties, native title interests, historical sites, wilderness or national park and environmental settings.</i>	Dalgaranga, Prospecting licence P59/2082 is 100% owned by Krakatoa Resources Ltd. No encumbrances known or expected.
	<i>The security of the tenure held at the time of reporting along with any known impediments to obtaining a licence to operate in the area.</i>	No known impediments – title 100% owned
Exploration	<i>Acknowledgment and appraisal of exploration by other parties.</i>	Exploration and historical mining has been conducted by Australasian Gold Mines NL and Tantalum Australia NL. The data pertaining to the exploration activities is presently being compiled.
Geology	<i>Deposit type, geological setting and style of mineralisation.</i>	The geology of the project area consists of a suite of fine grained, foliated clastic sediments (siltstone and arkose) with possible rare tuffaceous members on the eastern margin. Tuffaceous members occurring within the pit include bands (<300mm) of chialstolite rich siltstone (“knotted schists”). The lithologies are folded with north easterly axes and are often moderately foliated.
		The main open pit pegmatite vein and those veins to the south appear to have been intruded parallel to folding of the sediments.
Drill Hole Information	<i>A summary of all information material to the understanding of the exploration results including a tabulation of the following information for all Material drill holes:</i>	No Drilling Reported
	o easting and northing of the drill hole collar	No Drilling Reported
	o elevation or RL (Reduced Level – elevation above sea level in metres) of the drill hole collar	No Drilling Reported
	o dip and azimuth of the hole	No Drilling Reported
	o down hole length and interception depth	No Drilling Reported
	o hole length.	No Drilling Reported
	<i>If the exclusion of this information is justified on the basis that the information is not Material and this exclusion does not detract from the understanding of the report, the Competent Person should clearly explain why this is the case.</i>	All historical exploration data is in the process of being compiled. Further releases will be made to the market upon finalisation of the collation process and verification.

### Registered office:

Level 11, London House, 216 St Georges Terrace, Perth, W.A. 6000

Ph: +618 9481 0389

Fax: +618 9463 6103

W: [www.krakatoaresources.com](http://www.krakatoaresources.com)

M: [info@krakatoaresources.com](mailto:info@krakatoaresources.com)

Criteria	JORC Code explanation	Commentary
Data Aggregation Methods		In addition a detailed digital terrain model is required to accurately define the mining undertaken subsequent to exploration activities as there is no accurate final pit digital terrain model post mining.
	<i>In reporting Exploration Results, weighting averaging techniques, maximum and/or minimum grade truncations (eg cutting of high grades) and cut-off grades are usually Material and should be stated.</i>	No modification of results was conducted.
	<i>Where aggregate intercepts incorporate short lengths of high grade results and longer lengths of low grade results, the procedure used for such aggregation should be stated and some typical examples of such aggregations should be shown in detail.</i>	No aggregation of data was conducted.
Relationship between mineralisation widths and intercept lengths	<i>The assumptions used for any reporting of metal equivalent values should be clearly stated.</i>	No metal equivalents are reported.
	<i>These relationships are particularly important in the reporting of Exploration Results.</i>	No drilling or intercepts reported.
	<i>If the geometry of the mineralisation with respect to the drill hole angle is known, its nature should be reported.</i>	The general orientation and geometry has been reported in the body of the announcement based on pit mapping.
Diagrams	<i>If it is not known and only the down hole lengths are reported, there should be a clear statement to this effect (eg 'down hole length, true width not known').</i>	No drilling reported.
	<i>Appropriate maps and sections (with scales) and tabulations of intercepts should be included for any significant discovery being reported These should include, but not be limited to a plan view of drill hole collar locations and appropriate sectional views.</i>	Map of sampling location, historical pit location and mapped pegmatites have been included in body of announcement.
	<i>Balanced Reporting</i>	
Other substantive exploration data	<i>Where comprehensive reporting of all Exploration Results is not practicable, representative reporting of both low and high grades and/or widths should be practiced to avoid misleading reporting of Exploration Results.</i>	All results including those without significant results have been reported.
	<i>Other exploration data, if meaningful and material, should be reported including (but not limited to): geological observations; geophysical survey results; geochemical survey results; bulk samples – size and method of treatment; metallurgical test results; bulk density, groundwater, geotechnical and rock characteristics; potential deleterious or contaminating substances.</i>	At present historical data pertaining to the project area is being compiled. Further releases will be made to market upon completion.
Further Work	<i>The nature and scale of planned further work (eg tests for lateral extensions or depth extensions or large-scale step-out drilling).</i>	Detailed geological mapping and systematic sampling of pegmatites is planned to be conducted.
	<i>Diagrams clearly highlighting the areas of possible extensions, including the main geological interpretations and future drilling areas, provided this information is not commercially sensitive.</i>	A plan of the extents of pegmatites has been included. .

**Registered office:**

Level 11, London House, 216 St Georges Terrace, Perth, W.A. 6000

Ph: +618 9481 0389

Fax: +618 9463 6103

W: [www.krakatoaresources.com](http://www.krakatoaresources.com)

M: [info@krakatoaresources.com](mailto:info@krakatoaresources.com)