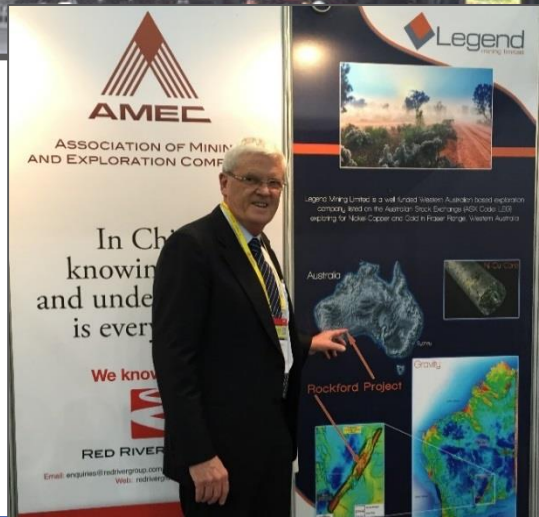
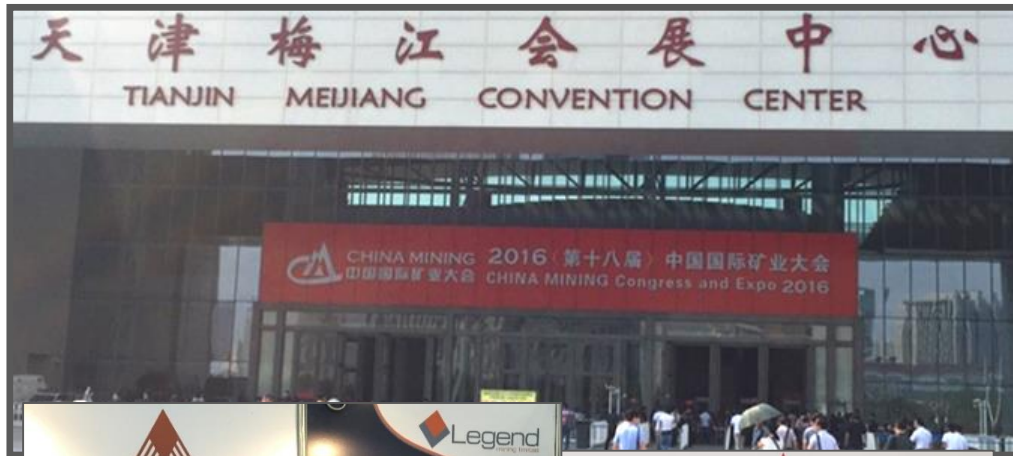




*Investor Presentation – December 2016*

ASX:LEG





- Key takeaways
  - Innovate to deal with new normal (single digit growth/ little demand impetus)
  - Sluggish growth world wide
  - Supply side restructure to survive
  - China in deep structural transition  
(Baosteel/Wuhan merger)

- Belt Road initiative

CHINA

## Euphemism for Infrastructure to Facilitate Trade-Access to Commodities

### Xilinhot (inner Mongolia)

- Grand Farm Meat Facility
- JV with V&V Walsh opened Sept 16 (10,000 lambs and 1,000 cattle per day)

### Urumqi

Airport expansion 40M passenger per year. Hong Kong/Sydney size.

### Chengdu – Rail Expansion

- 4 trains per week to Lodz
- 20 trains per week to Moscow

Tsingshan – World Class Nickel smelter in Indonesia with adjoining SS plant. 30ktpa to 150ktpa



CHINA



# ABOUT LEGEND



- ASX listed exploration company
- Market capitalisation ~\$24.4M (2B shares @ 1.2c)
- Cash and liquids ~\$11.2M as at 30 September 2016 (includes \$3M receivable December 2016)
- Fraser Range – Rockford Project



**Chairman**  
**Michael Atkins**



**Managing Director**  
**Mark Wilson**

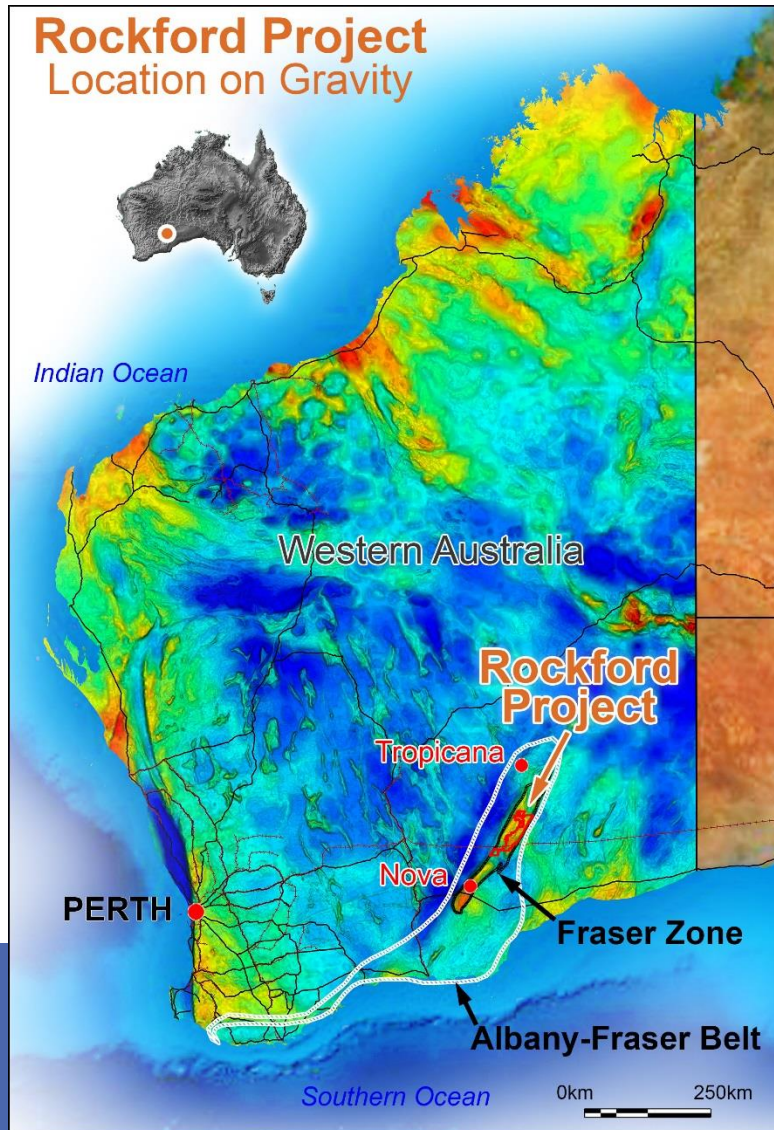


**Exec. Director - Technical**  
**Derek Waterfield**

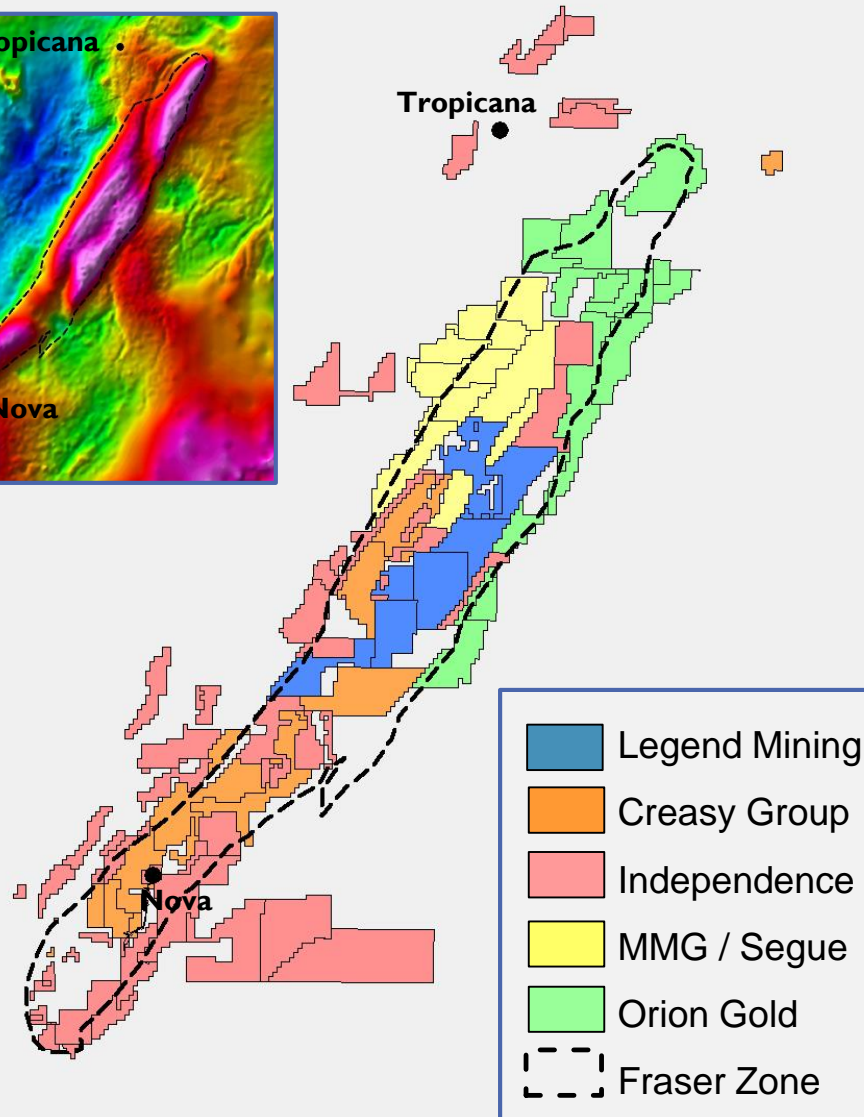
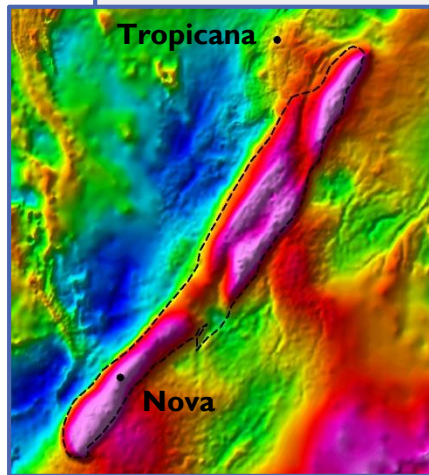


**Company Secretary**  
**Tony Walsh**





- Located in northern Fraser Range district
- Acquisition date – 09/2015
- 70/30 JV with Creasy Group
- 120km NE of Nova  
100km S of Tropicana
- 100% within Fraser Zone  
(16% of total area)
- Infrastructure access
- **Project potential for**
  - Nova style Nickel-Copper
  - Tropicana style Gold

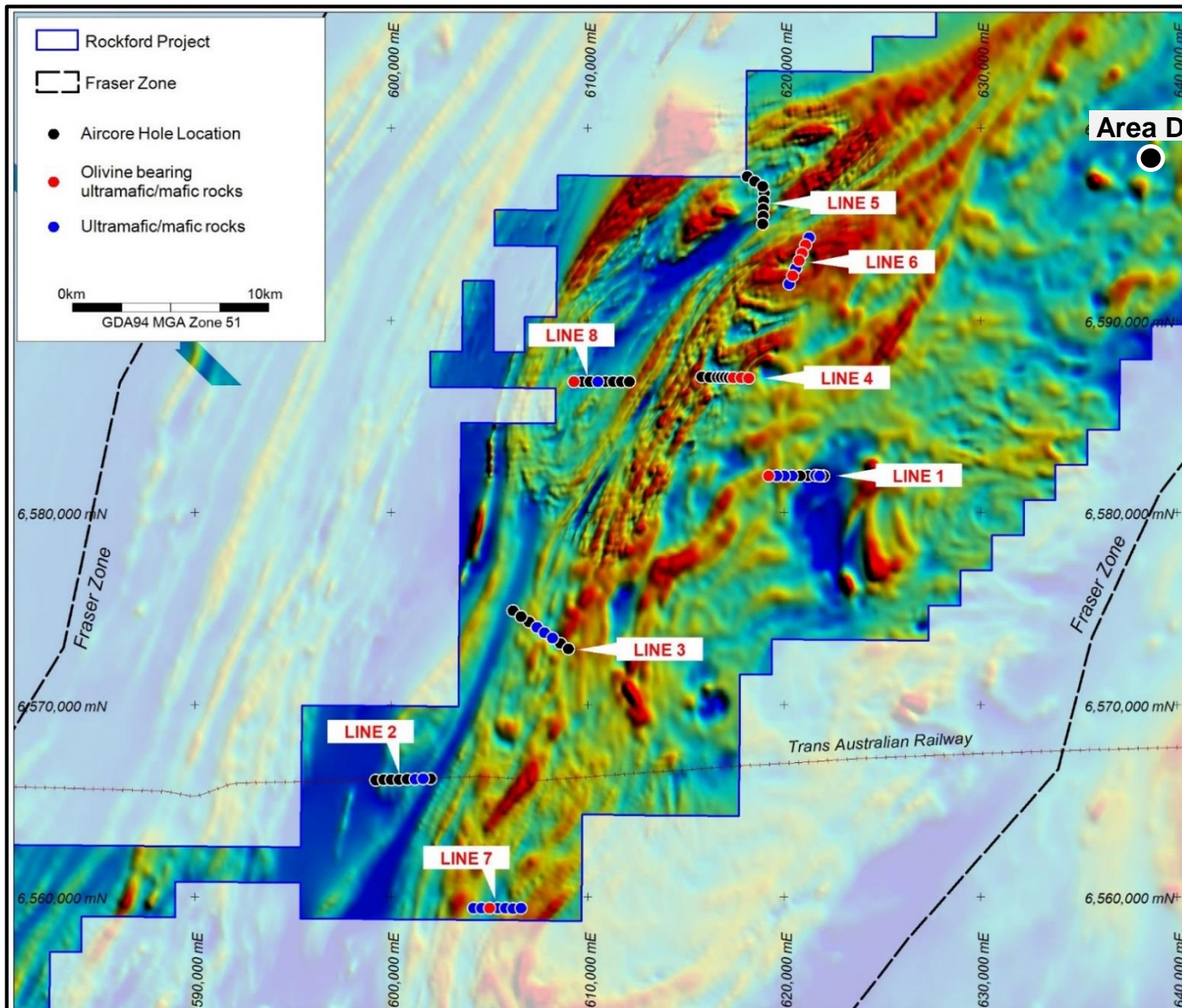


## Five Main Players

- Legend Mining
  - Active & Funded
- Creasy Group
  - Active & Private
- Independence Group
  - Active & \$2.6B MC
- MMG / Segue JV
  - Active
- Orion Gold
  - Sth African Focus

- Leverage play is Legend
- M&A by Mid-Tiers bring back life to area





- 64 holes
- 5,115m
- 8 lines
- 7/8 mafic/um
- 10/64 olivine
- Assays awaited
- Petrology - TBA following assays

Aircore Drillholes on Aeromagnetic Image





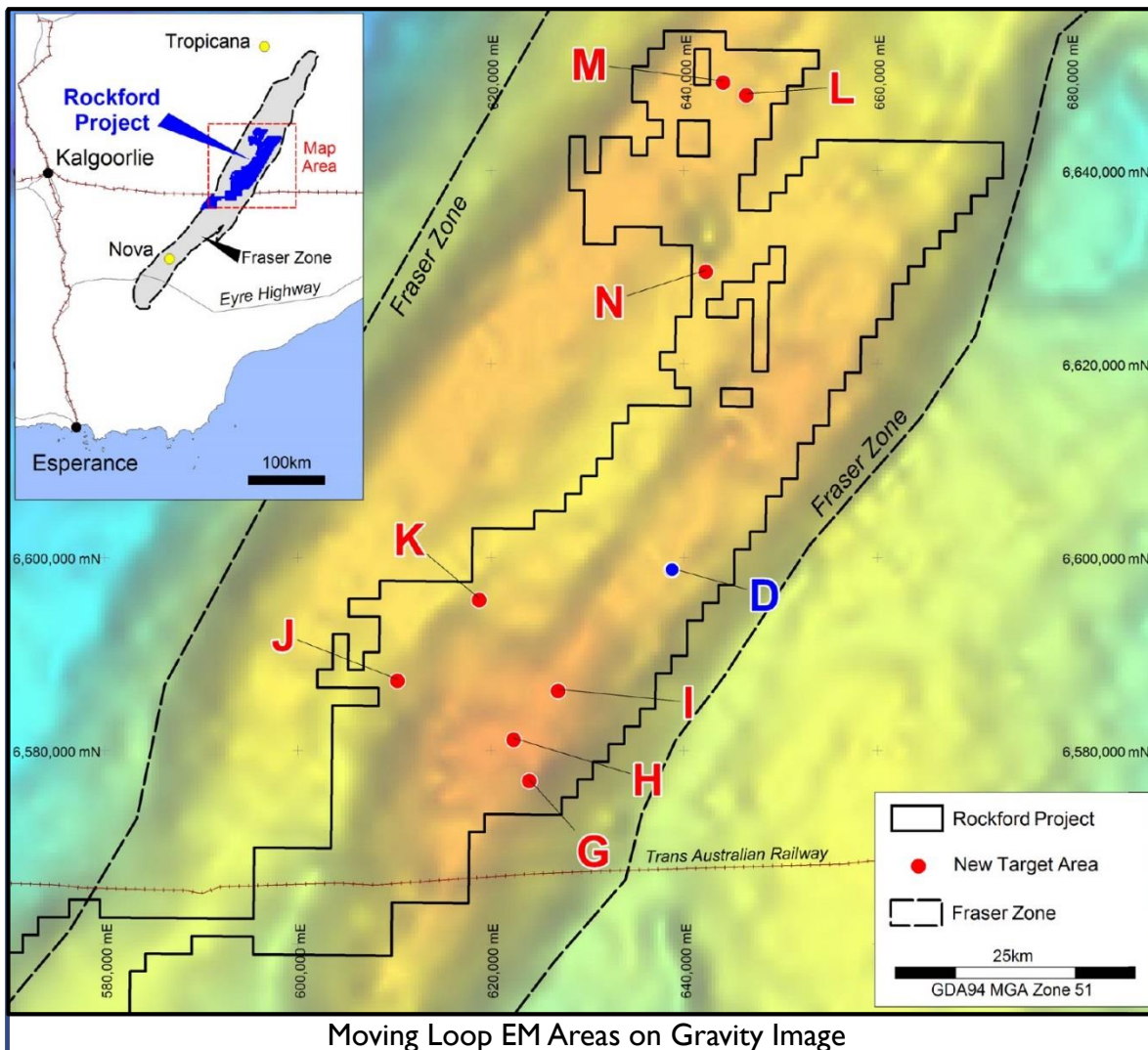
Rockford Aircore Drillhole RKAC036 to 101m





Rockford Aircore Drillhole RKAC033 to 61m

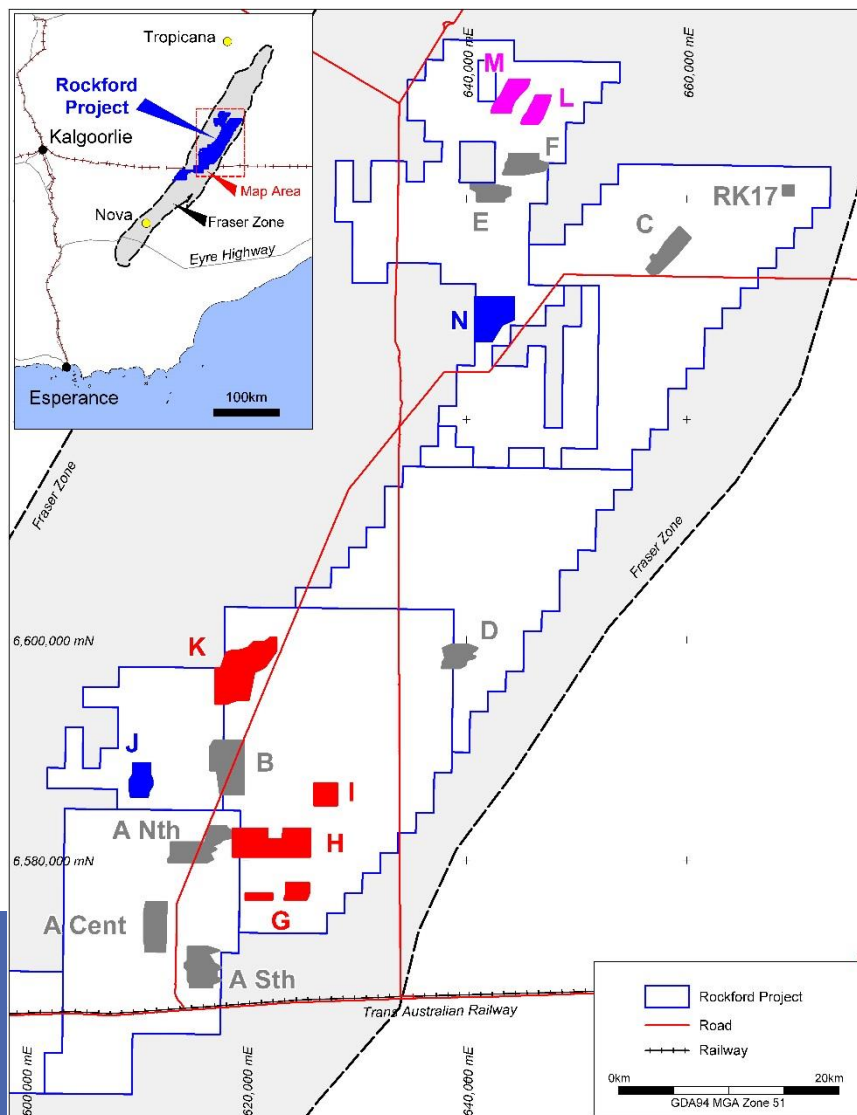




Moving Loop EM Areas on Gravity Image

- Eight targets identified at Areas G–N, based on aeromagnetics/gravity/interpretive mapping
- Areas G, H, I, K completed – no conductors
- Area J & N – work in progress
- Plan to complete areas L & M by Xmas (8 in total)





## MLTEM completed 2016

- Areas; G, H, I, K

## MLTEM underway

- Areas; J, N

## MLTEM planned by end 2016

- Areas; L, M

## MLTEM completed 2015

- Areas; A Nth-Central-Sth, B, C, D, E, F, RK17

Area covered by MLTEM surveys:

$121\text{km}^2$  of total  $2,530\text{km}^2 = 4.8\%$

### Aircore Drilling

- Assay results due by early December
- Submit selected BOH samples for petrology based on geology/assays

### MLTEM Surveys

- Complete infill lines at Areas J & N
- Plan to complete Areas L & M by Xmas

### Gravity Survey

- Complete 5,400 station data collection by Xmas

### Planning for 2017 Activities

- RC/diamond drilling
- Aircore drilling / MLTEM surveying







# DISCLOSURE



This is not a disclosure document. Any material used in this presentation is a summary of selected data, and any investor in Legend Mining Limited should refer to all Legend Mining Limited ASX releases and statutory reports before considering to invest in the company.

Any forward looking information in this presentation has been prepared on the basis of a number of assumptions that may prove not to be correct. Neither Legend Mining Limited, nor its officers, employees and advisors make or give any representation, warranty or guarantee in relation to this presentation.

Legend Mining Limited reserves the right to update, amend or supplement the Information in this presentation at any time in its absolute discretion without incurring any obligation to do so.

The information in this presentation that relates to exploration results is based on information compiled by Mr Derek Waterfield who is a member of the Australian Institute of Geoscientists and is a full time employee of Legend Mining Limited.

Mr Derek Waterfield has sufficient experience which is relevant to the style of mineralisation and type of deposit under consideration and to the activity which he is undertaking to qualify as a Competent Person as defined in the 2012 Edition of the 'Australasian Code for Reporting of Exploration Results, Mineral Resources and Ore Reserves' (the JORC Code).

Mr Derek Waterfield consents to the inclusion in this presentation of the matters that relate to exploration results in the form and context in which it appears.





*THANK YOU*

LEGEND MINING LIMITED

ASX:LEG

**Legend Mining Limited**

Po Box 626

WEST PERTH WA 6872

Phone: 08 9212 0600

Fax: 08 9212 0611

Email: [legend@legendmining.com.au](mailto:legend@legendmining.com.au)

**[www.legendmining.com.au](http://www.legendmining.com.au)**