

New Prospective Trend Identified at Rockford Project

- Legend tenure contains 24km of same host stratigraphy as IGO’s Andromeda Project
- Aircore drilling and EM surveys planned to commence in September

Legend Mining Limited (“Legend”) is pleased to provide details of a new prospective exploration trend in the southern region of its Rockford Project in the Fraser Range of Western Australia. Investigations following the announcement of the recent Andromeda copper-zinc discovery by Independence Group (“IGO”) (ASX 26/07/2018) have identified that a 24km zone containing the same magnetically distinct stratigraphic package runs through Legend tenure (see Figure 1).

Legend Managing Director Mark Wilson said, “IGO highlighted the thick massive sulphide intersections at the Andromeda Project in the release to the ASX on 26 July in the Fraser Range exploration summary. Andromeda is only 7km from Legend’s southern tenement boundary. This should be regarded as a complimentary additional item to the Rockford Project inventory and not a distraction from our primary focus of nickel-copper-cobalt discovery”.

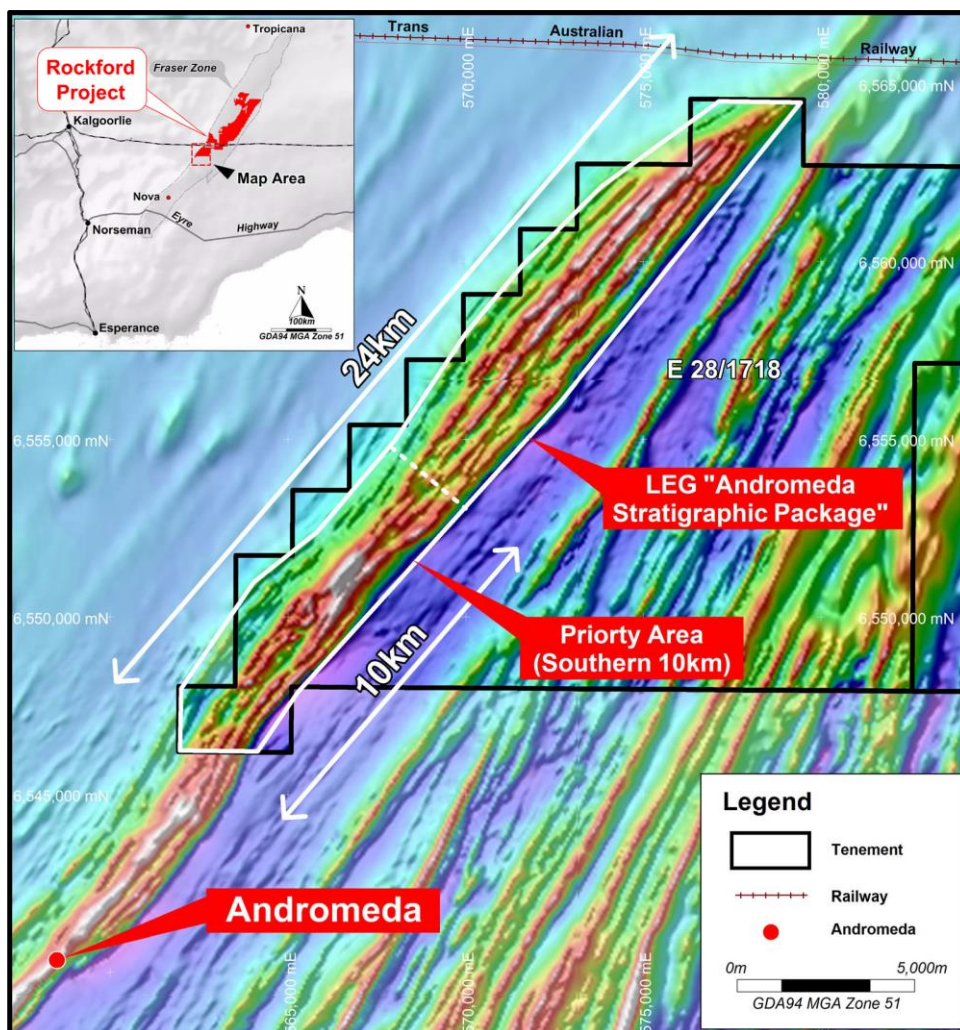
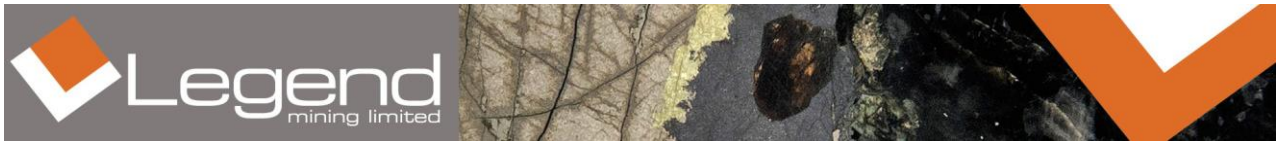


Figure 1: Location of Andromeda Stratigraphic Package on Legend Tenement E28/1718



Exploration in the Fraser Range since the discovery of the Nova Ni-Cu-Co deposit in July 2012 by Sirius Resources has focussed predominantly on magmatic Ni-Cu sulphide style mineralisation associated with mafic/ultramafic intrusions. However the recently announced Andromeda copper-zinc discovery by IGO (ASX: 26/07/2018) has highlighted the potential of the Fraser Zone within the larger Albany-Fraser Orogen to also host volcanic-hosted massive sulphide (“VHMS”) deposits (see Figure 1).

IGO diamond drillhole 18AFRD004 was targeting a downhole EM conductor and returned an intersection of 29.9m @ 1.36% Cu, 2.51% Zn, 19.9g/t Ag, 0.35g/t Au from 548.1m containing abundant pyrrhotite with associated chalcopyrite and sphalerite. This is a highly significant result for Legend, both with respect to the thickness/grade of the intersection, but also the recognition of VHMS style mineralisation as a viable exploration target within the Rockford Project.

The Andromeda Project is located 7km to the southwest of Legend tenement E28/1718 and is hosted within a NE-SW trending magnetically distinct stratigraphic package (see Figure 1). This stratigraphic package continues into E28/1718 and extends for a further 24km to the northeast. No previous drilling or ground geophysics has been undertaken along this trend and historic surface sampling is considered ineffective due to thick transported cover.

Legend is currently designing an exploration programme to test this VHMS prospective trend comprising a combination of aircore drilling and innovative high power EM. The programme is scheduled to commence in September following receipt of all necessary statutory approvals.

Competent Person Statement

The information in this report that relates to Exploration Results is based on information compiled by Mr Derek Waterfield, a Member of the Australian Institute of Geoscientists and a full time employee of Legend Mining Limited. Mr Waterfield has sufficient experience that is relevant to the styles of mineralisation and types of deposit under consideration, and to the activity being undertaken, to qualify as a Competent Person as defined in the 2012 Edition of the “Australasian Code for Reporting of Exploration Results, Mineral Resources and Ore Reserves” (JORC Code). Mr Waterfield consents to the inclusion in the report of the matters based on his information in the form and context in which it appears.

Visit www.legendmining.com.au for further information and announcements.

For more information:

Mr Mark Wilson
Managing Director
Ph: (08) 9212 0600

Mr Derek Waterfield
Executive Director - Technical
Ph: (08) 9212 0600