

21 April 2026

## Investor Presentation

Lincoln Minerals Limited ('the Company') (ASX:LML) is pleased to enclose a copy of the Company's updated Investor Presentation.

Approved for release by the Board of Lincoln Minerals Limited.

**For further information, please contact:**

**Chris Wilcox**

*Chief Executive Officer*

**Lincoln Minerals Limited**

**E:** [info@lincolnminerals.com.au](mailto:info@lincolnminerals.com.au)

**P:** +1300 137 116

**Kristin Rowe**

*Investor and Media Relations*

**NWR Communications**

**E:** [kristin@nwrcommunications.com.au](mailto:kristin@nwrcommunications.com.au)

**P:** +61 404 88 98 96



ASX:  
LML



# Lincoln Minerals

**Discovery Focused Copper Company**

Investor Presentation

April 2026

Lincoln Minerals Limited

## Disclaimer and Competent Person Statement

The information contained in this document ("Presentation") has been prepared by Lincoln Minerals Limited ("Company"). The purpose of this Presentation is to provide background information to assist readers in obtaining a general understanding of the Company's proposals and objectives. It is not and should not be considered as an offer or invitation to apply for or purchase any securities of the Company or as a recommendation or inducement to make an offer or invitation in respect of securities in the Company. No agreement to subscribe for securities will be entered into on the basis of this Presentation or any information contained in this Presentation.

The information in this Presentation is not intended to form the basis of any investment decision in relation to the Company or its assets and should not be considered as a recommendation to invest in the Company. This Presentation is not a prospectus, product disclosure document or other offering document under Australian law or under the law of another jurisdiction. Readers should carry out and should rely on their own independent review, investigation, analysis and due diligence of the Company and its operations, business and assets.

The information in this Presentation, which is selective and does not purport to contain all the information that readers may require to evaluate the Company, has not been independently verified. While the information contained herein has been prepared in good faith, neither the Company nor any of its shareholders, directors, officers, agents, employees or advisers give, have given or have authority to give, any representations or warranties (express or implied) as to, or in relation to, the accuracy, reliability or completeness of the information in this Presentation, or any revision thereof, or of any other written or oral information made or to be made available to any interested party or its advisers (all such information being referred to as "Information") and liability therefore is expressly disclaimed. Accordingly, neither the Company nor its directors, officers, agents, employees or advisers take any responsibility for, or will accept any liability whether direct or indirect, express or implied, contractual, tortious, statutory or otherwise, in respect of, the accuracy or completeness of the Information or for any of the opinions contained herein or for any errors, omissions or misstatements or for any loss, howsoever arising, from the use of this Presentation.

This Presentation should not be considered as the giving of investment advice by the Company or its directors, officers, agents, employees or advisers. Each party to whom this Presentation is made available must make its own independent assessment of the Company after making such investigations and taking such advice as may be deemed necessary. In particular, any estimates or projections or opinions contained herein necessarily involve significant elements of subjective judgment, analysis and assumptions and each recipient should satisfy itself in relation to such matters.

This Presentation includes certain statements that may be deemed "forward-looking statements". All statements in this discussion, other than statements of historical facts, that address future activities and events or developments that the Company expects, are forward-looking statements. Although the Company believes the expectations expressed in such forward-looking statements are based on reasonable assumptions, such statements are not guarantees of future performance and actual results or developments may differ materially from those in the forward-looking future performance and actual results or developments may differ materially from those in the forward-looking statements. Factors that could cause actual results to differ materially from those in forward-looking statements include market prices, continued availability of capital and financing, and general economic, market or business conditions. Investors are cautioned that any such statements are not guarantees of future performance and that actual results or developments may differ materially from those projected in forward-looking statements.

The information in this document that relates to Exploration Results and Mineral Resources is based upon information compiled by Mr Shane O'Connell who is a Member of the Australasian Institute of Mining and Metallurgy. Mr O'Connell is a consultant and advisor to Lincoln Minerals Limited and has sufficient experience relevant to the style of mineralisation, the type of deposit under consideration and to the activity undertaken to qualify as a Competent Person as defined in the 2012 edition of the Australasian Code for Reporting of Exploration Results, Mineral Resources and Ore Reserves (the JORC Code). Mr O'Connell consents to the release of the information compiled in this report in the form and context in which it appears.

Information extracted from previously published reports identified in this report is available to view on the company's website [www.lincolnminerals.com.au](http://www.lincolnminerals.com.au) or by searching ASX's announcements. The pre-2012 information was prepared and first disclosed under the JORC Code 2004. It has not been updated since to comply with the JORC Code 2012 on the basis that the information has not materially changed since it was last reported. The company confirms that it is not aware of any new information or data that materially affects the information included in the original market announcements, and in the case of estimates of mineral resources, that all material assumptions and technical parameters underpinning the estimates in the relevant market announcements continue to apply and have not materially changed.

The Board has authorised the release of these presentation materials.

# Eyre Peninsula Copper

A discovery-type intersection of **copper**, **lead**, **zinc**, and **silver** at the Minbrie Project has reinvigorated exploration on the Eyre Peninsula.



Actively focused on testing the Minbrie Project

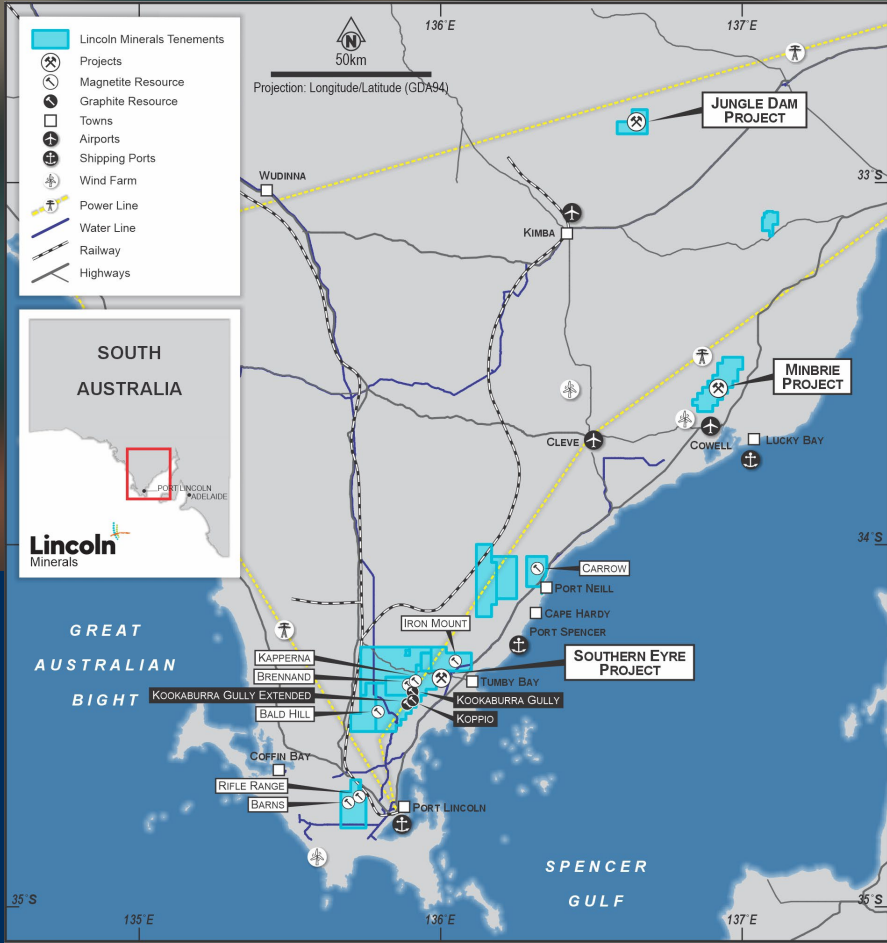
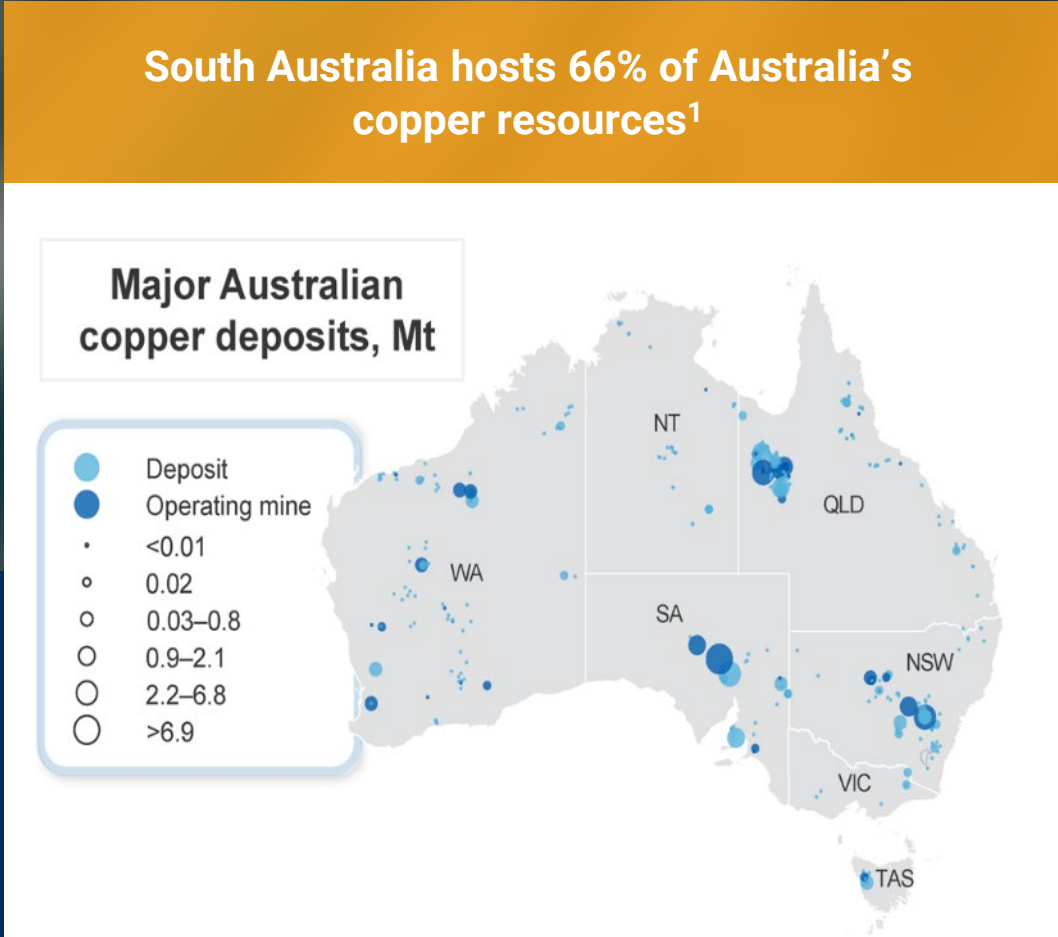


Large Eyre Peninsula tenement holding underexplored for copper



Management team has a **proven track record** of successful exploration

# Significant Eyre Peninsula Landholding in a Prolific Copper Jurisdiction



Lincoln holds ~1,100km<sup>2</sup> of tenements in the Gawler Craton, close to infrastructure

Source: <sup>1</sup>Geoscience Australia: <https://www.ga.gov.au/digital-publication/aimr2019/commodity-summaries#copper-section>

<sup>2</sup>Department of Industry, Science, and Resources: <https://www.industry.gov.au/sites/default/files/minisite/static/b3caf4fd-b837-4cc5-b443-38782298963a/resources-and-energy-quarterly-june-2022/index.html>

Copper Projects	<b>Copper-Base Metal Minbrie Project</b>	<b>Advanced Exploration</b> Discovery Hole <sup>1</sup> : <b>29.5m @ 0.8% Cu, 7.5% Pb, 1.9% Zn, 9 g/t Ag</b> (apparent width)	<ul style="list-style-type: none"> <li>• Located in South Australia's Gawler Craton: Potential for large-scale copper and base metal mineralisation.</li> <li>• 17km of stratigraphy prospective for Cu-Zn-Pb-Ag mineralisation</li> <li>• Drilling planned for May-June</li> </ul>
	<b>Copper-Gold Southern Eyre Project</b>	<b>Early Exploration</b> Historic high-grade copper and gold in rock chip samples	<ul style="list-style-type: none"> <li>• Similar geological setting to Minbrie</li> <li>• Historic results not effectively followed up</li> <li>• Mapping and soil sampling required to define drill targets</li> </ul>
Other Projects	<b>Graphite Kookaburra Graphite Project</b>	<b>Feasibility &amp; Secondary Approvals</b> <b>12.8Mt @ 7.6% TGC Resource<sup>3</sup> with PFS NPV10 of A\$114m<sup>4</sup></b>	
	<b>Iron Ore Eyre Magnetite Project</b>	<b>Feasibility &amp; Mining Lease Approvals</b> <b>1.2 Bt @ 26% Fe Resource<sup>5</sup></b>	
	<b>Uranium Eyre Uranium Targets</b>	<b>Exploration</b> <b>Historic uranium drill intercepts<sup>6</sup> up to 570 ppm U</b>	

<sup>1</sup> LML ASX announcement dated 12 February 2025, titled "Mineralised Zones Identify Copper & Base Metals Potential". <sup>2</sup> LML ASX announcement 17 February 2025 "Lincoln confirms mineralised system with multiple sulphide zones over 7km of strike at Minbrie, SA." <sup>3</sup> LML ASX announcement dated 16 April 2024 titled "Update to Target Achieved of Doubling the Kookaburra Graphite Project Resource". For a breakdown of Mineral Resources by category, see Appendix slide. <sup>4</sup> LML ASX announcement dated 28 October 2024, titled "Kookaburra Graphite Project PFS progresses Lincoln's aim to be Australia's Next Graphite Producer". The Company confirms that all the material assumptions underpinning the production target and the forecast financial information derived from the production target, in the announcement continue to apply and have not materially changed. <sup>5</sup> Centrex Metals ASX announcement dated 18 Sep 2015 titled "Eyre Iron Joint Venture Resource Update" and LML ASX announcement dated 7 June 2012 entitled "New Gum Flat Iron Ore Resource". The information was prepared and first disclosed under the JORC Code 2004. It has not been updated since to comply with the JORC Code 2012 on the basis that the information has not materially changed since it was last reported. For a breakdown of Mineral Resources by category, see Appendix slide. <sup>6</sup> LML ASX announcement dated 9 April 2024 titled "Historic uranium drill intercept up to 570 ppm".

# Work completed over the last 15 months

## Identification of a discovery type intersection

29.5m @ 0.8% copper (Cu), 7.5% lead (Pb), 1.9% zinc (Zn), 9 g/t silver (Ag) from 131.1m<sup>1</sup> (apparent width)

## Relogging and resampling of historic drill core

Approx. 30% of Centrex's iron ore focussed diamond core at Minbrie reviewed to date

## New leadership team

New team brings a focus on copper discovery

## Land access and regulatory approvals

All approvals in place for Stage 1 drill program<sup>2</sup>

## Business development

Signed agreements on the magnetite and graphite projects to pursue value-add opportunities that don't distract from copper discovery<sup>3,4</sup>.

<sup>1</sup> ASX:LML 12 February 2025, "Mineralised Zones Identify Copper & Base Metals Potential"

<sup>2</sup> ASX:LML 30 March 2026 "Lincoln Receives approvals to commence drilling at Minbrie Copper Project, SA"

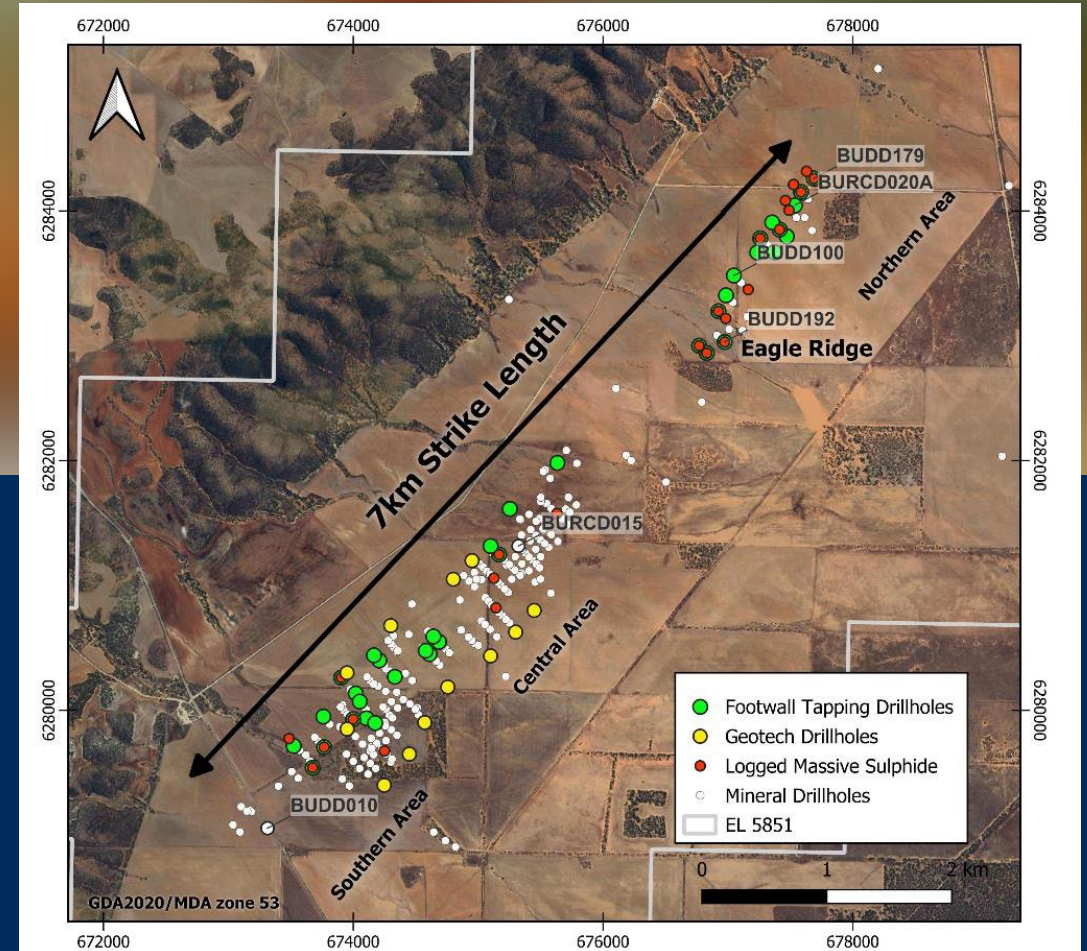
<sup>3</sup> ASX:LML 17 December 2025 "Lincoln signs collaboration agreement for Kookaburra Graphite Project"

<sup>4</sup> ASX:LML 8 December 2025 "Lincoln signs MOU with Revera Energy for Eyre Magnetite Project, SA"

Review of historic data reveals a discovery-type intercept at Eagle Ridge

Relogging and reassaying of Centrex's iron ore holes has identified copper-base metals over 7km of strike<sup>2</sup>

29.5m @ 0.8% copper (Cu), 7.5% lead (Pb), 1.9% zinc (Zn), 9 g/t silver (Ag) from 131.1m<sup>3</sup> (BUDD192, apparent width)



Source: <sup>1</sup> ASX: LML, 12 February 2025, "Mineralised Zones Identify Copper & Base Metals Potential"

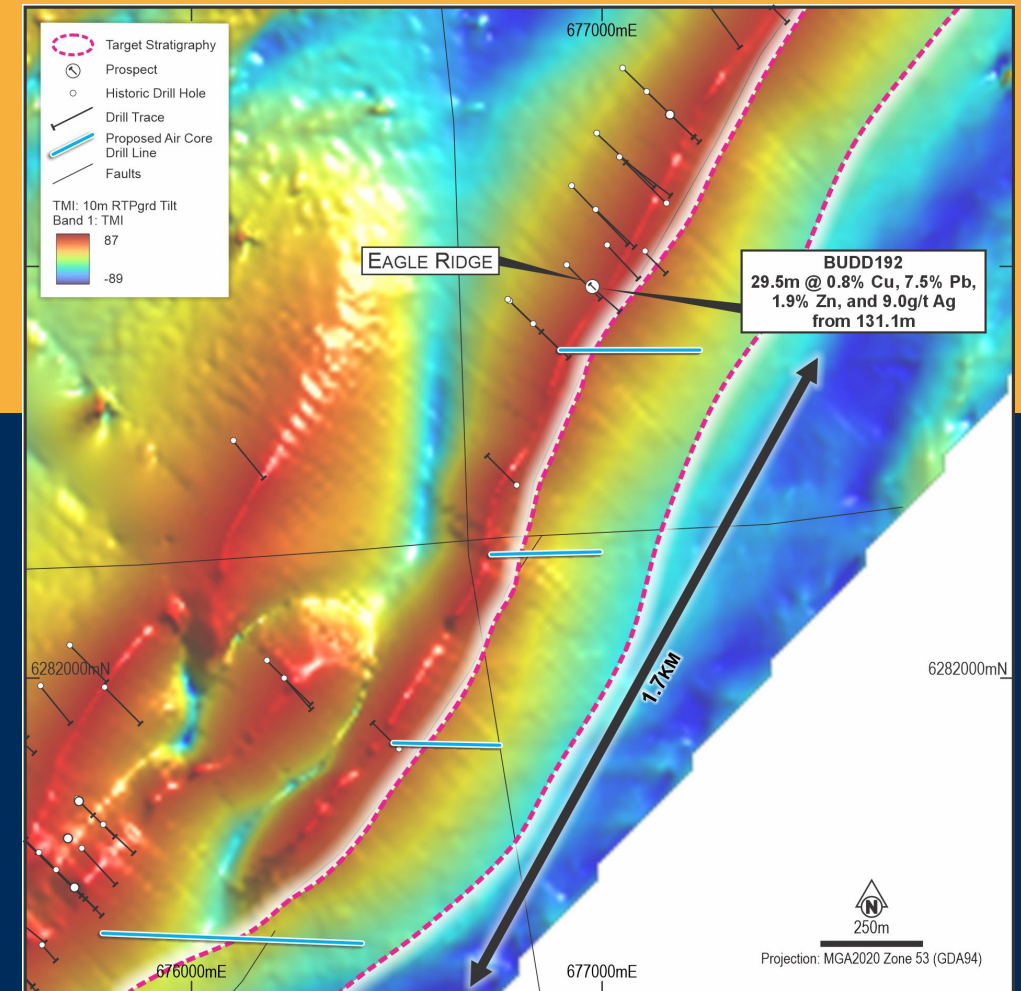
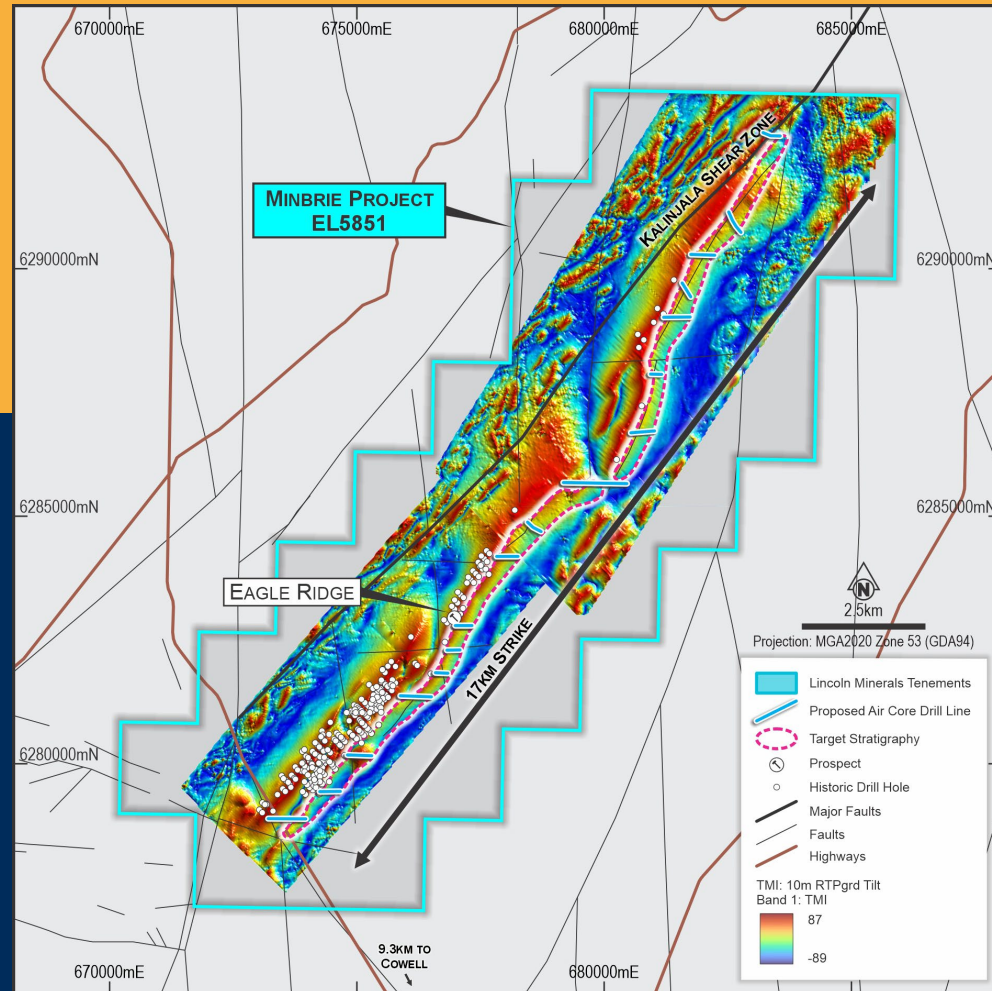
<sup>2</sup> ASX: LML, 19 August 2025, "Assays confirm a large-scale Cu-Zn-Pb-Ag mineralisation system over 7km strike at Minbrie"



# 17km of Target Stratigraphy at Minbrie Remains Largely Untested<sup>1</sup>

During May and June, a minimum of 40 air core holes will be drilled on existing tracks to test prospective stratigraphy in areas of high discovery.

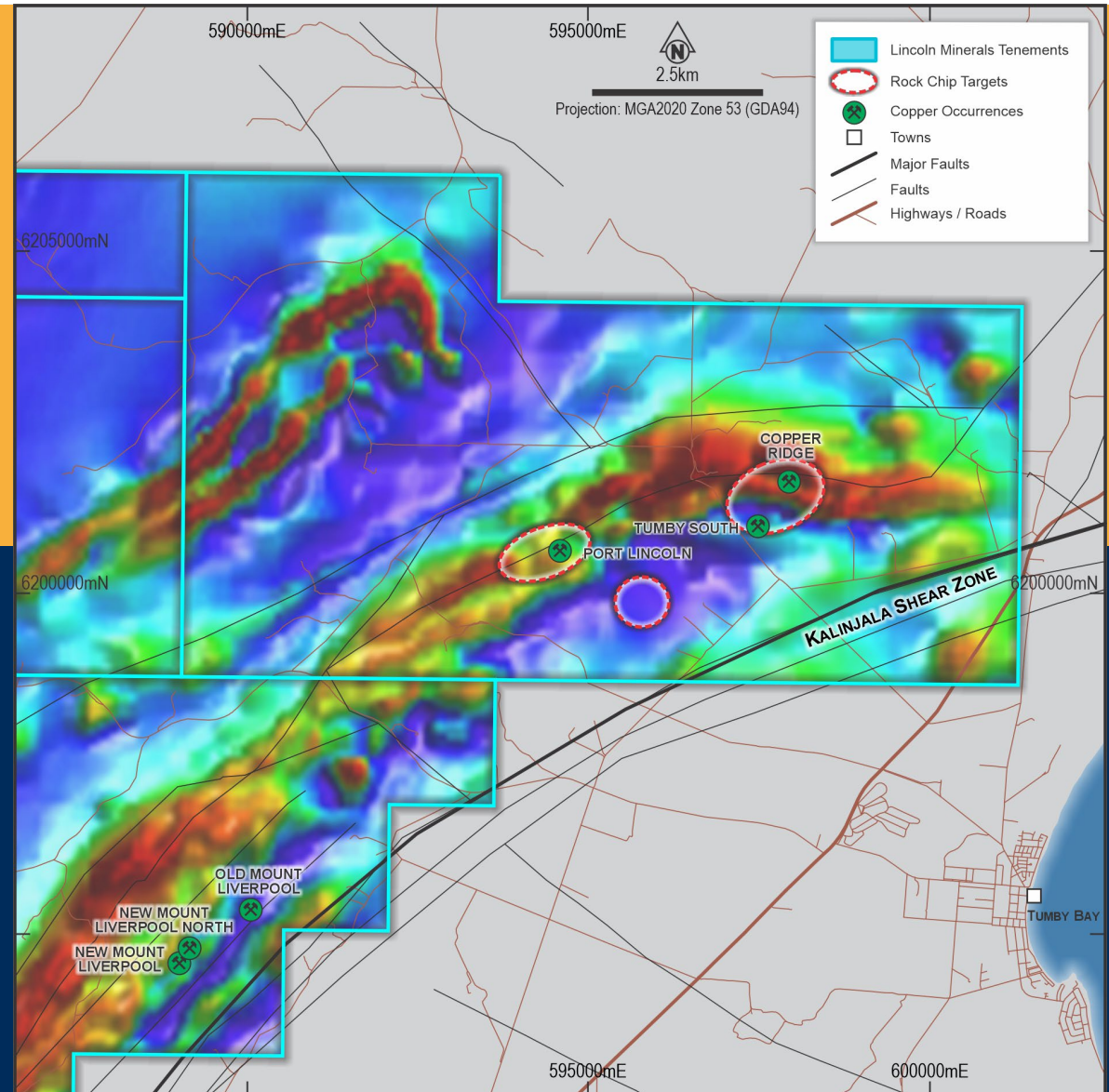
The program is designed to identify multiple targets along the 17km strike and evaluate the scale potential at Eagle Ridge in advance of diamond drilling.



# Historic High-Grade Copper Targets Identified at Southern Eyre Project

This region shares a similar geological setting to Minbrie but has seen **limited significant copper exploration over the last 30 years.**<sup>1</sup>

Historic high-grade rock chip samples demonstrate the potential for Minbrie-style copper mineralisation.<sup>1</sup>



Source: <sup>1</sup>LML ASX 2 February 2026, "Lincoln identifies historic high-grade copper targets at Southern Eyre Project, SA"

# Lincoln is identifying copper discovery assets that satisfy key selection criteria

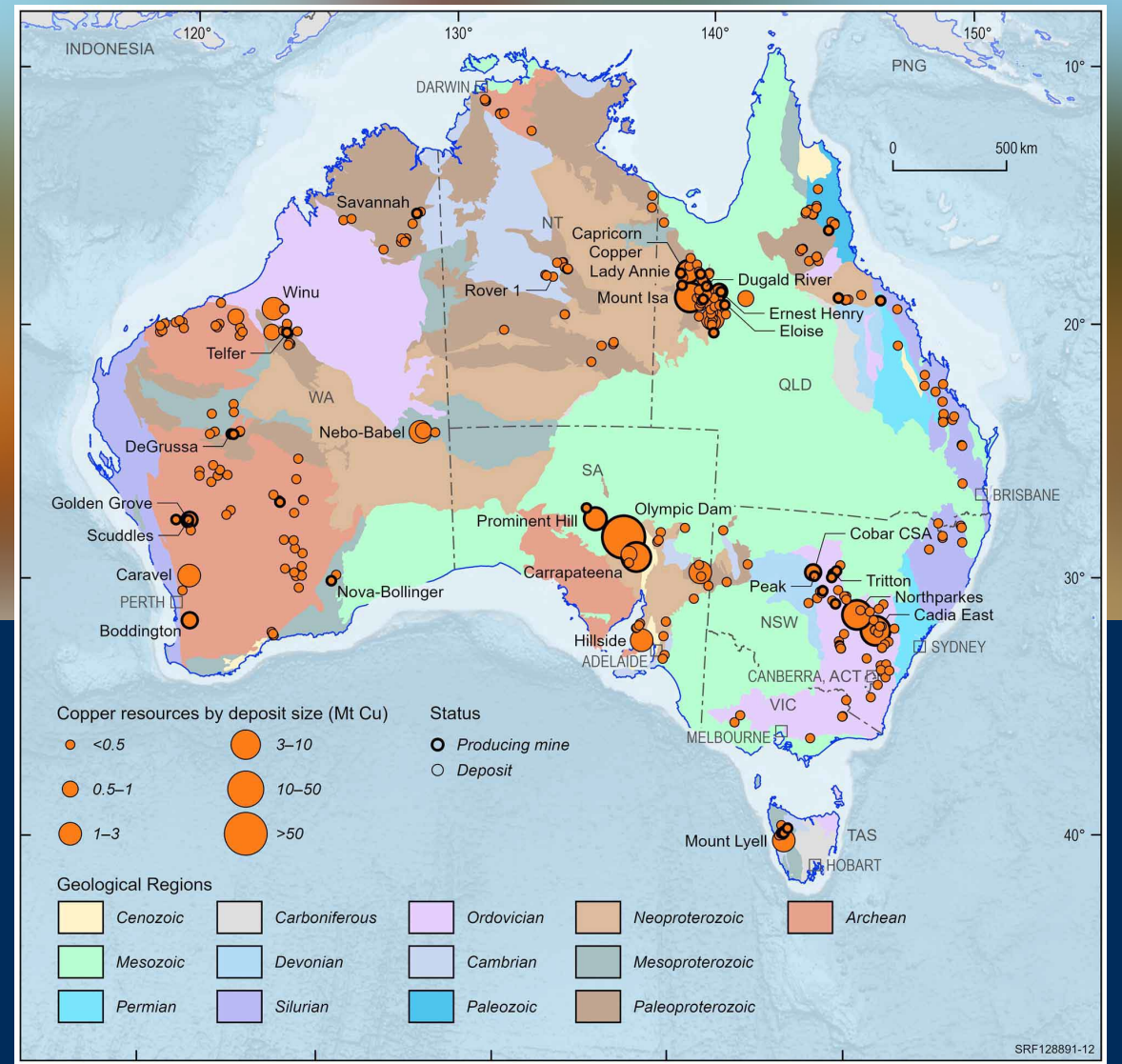
**Prospectivity**  
Known Australian copper belt with potential for further discoveries

**Opportunity Scale**  
Sufficient target strike for a significant discovery

**Proximity to Infrastructure**  
Key infrastructure sufficiently close to derisk future development

**Discovery Stage**  
Land access agreements in place and drill targets identified

**Social Licence**  
Low risk region for exploration and resource development



## Minbrie Air Core Drilling

Wide-spaced air core on existing tracks to commence in May/June with results expected 4 weeks after completion

## Relogging and Resampling

Review of all historic core at Minbrie to commence after air core drilling program

## Minbrie Follow-Up Drilling

Targeted RC/Diamond drilling of high-priority prospects in 2H CY26

## Target Definition

Identifying new copper targets across the Eyre Peninsula

## Business Development

Assess value adding opportunities

<sup>1</sup> LML ASX announcement dated 8 July 2025, titled "Mineralised Zones Identify Copper & Base Metals Potential"

## Capital Structure



## Experienced Leadership Team



**Greg English**

Non-Executive Chair



**Ryan Smith**

Non-Executive Director



**John Lam**

Non-Executive Director



**Chris Wilcox**

Chief Executive Officer



**Jake van der Hoek**

Company Secretary

## Expert Consultants

### **Dr Justin Gum**

+30 years experience in orogenic gold and magmatic sulphide

### **Shane O'Connell**

Resource estimation and conditional simulation specialist

## For further information

### Chris Wilcox

*Chief Executive Officer*

**Lincoln Minerals Limited**

[info@lincolnminerals.com.au](mailto:info@lincolnminerals.com.au)

1300 137 116

### Kristin Rowe

*Investor and Media Relations*

**NWR Communications**

[kristin@nwrcommunications.com.au](mailto:kristin@nwrcommunications.com.au)

+61 404 88 98 96

[info@lincolnminerals.com.au](mailto:info@lincolnminerals.com.au)

[www.lincolnminerals.com.au](http://www.lincolnminerals.com.au)



**Lincoln**  
Minerals



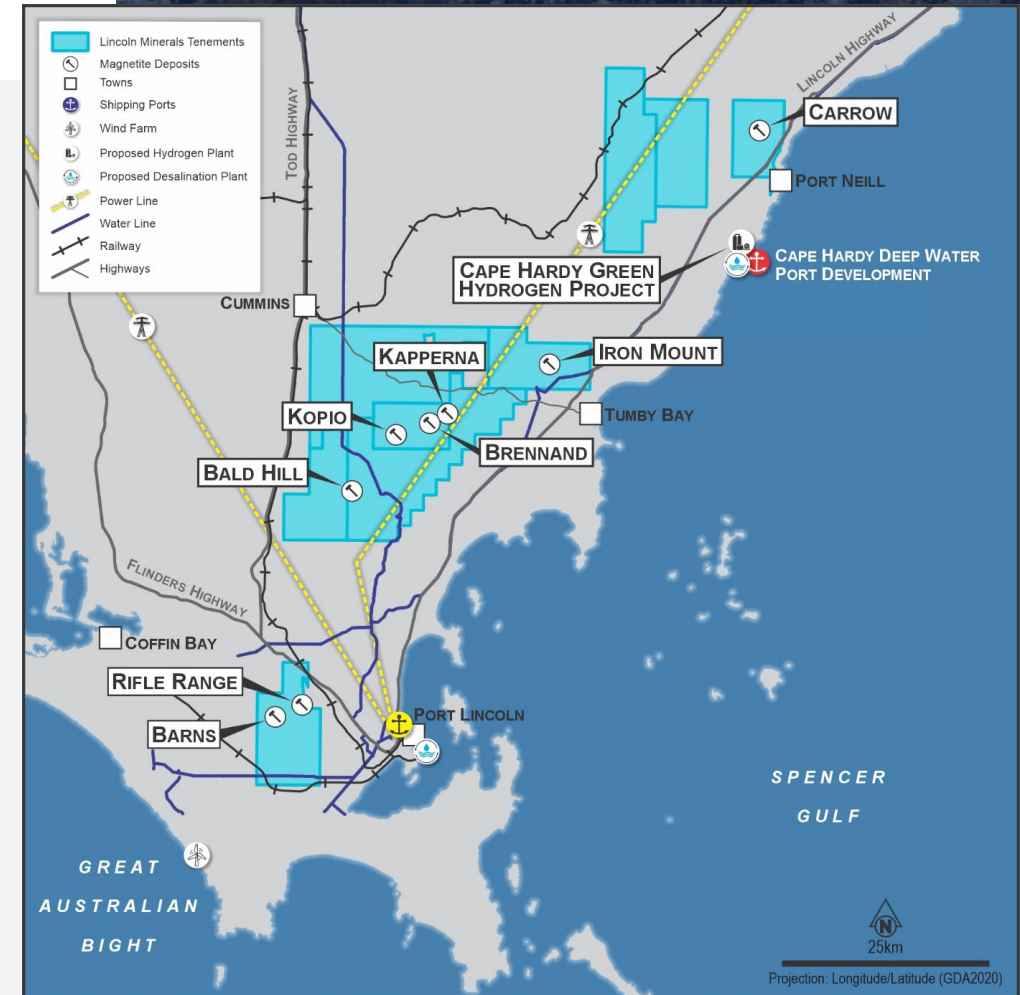
# Appendix



ASX:  
LML

# Eyre Magnetite Project Advanced and Strategically Positioned in South Australia

- **100% owned magnetite resource of 1.1Bt @ 25.8 Fe%.<sup>1</sup>**
- **Lower capital requirements** with major infrastructure nearby and within **60km** of one **active port** and **two approved** but yet-to-be-built ports.
- **Capable of producing high-purity iron and Direct Reduction Iron (DRI) concentrate with a coarse-grind, without the need for flotation.** P80 -75  $\mu\text{m}$  can produce up to **+67% Fe concentrate.**<sup>2</sup>
- **Positioned for rapid development,** leveraging **\$75M** in previous feasibility studies.
- Recent **MOU signed with Revera Energy** (energy infrastructure company backed by Carlyle) to explore opportunities for developing a DRI grade pellet plant using green hydrogen as a fuel.<sup>3</sup>



Location of Lincoln Mineral's Magnetite Project in South Australia

<sup>1</sup> Within LML's previously announced 1.2Bt project, ASX LML announcement 31 March 2024, "Lincoln confirms strategic 1.2 billion tonne magnetite Mineral Resource on Eyre Peninsula". A complete breakdown by Resource classification is provided on Appendix 1

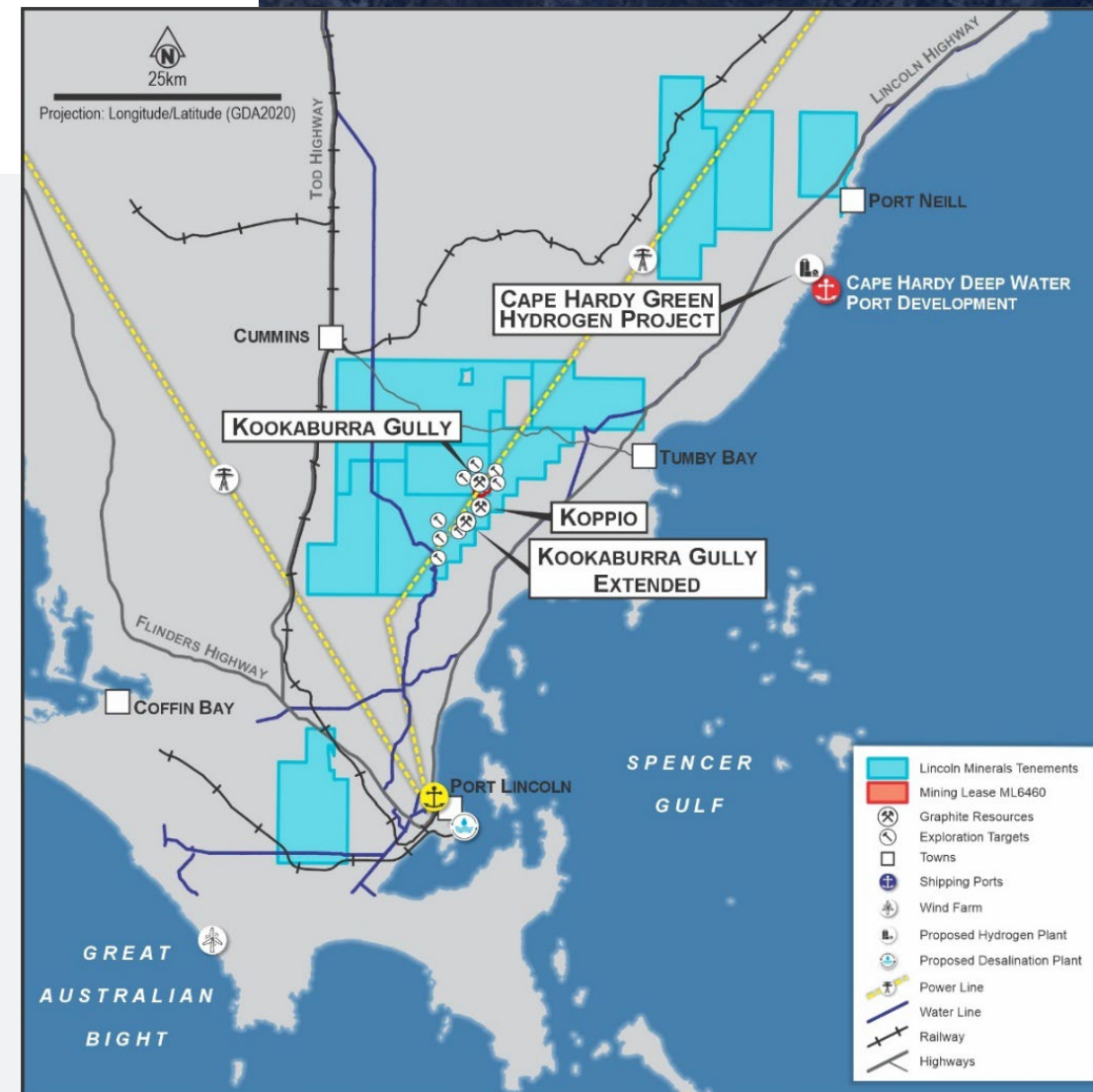
<sup>2</sup> Centrex Metals ASX announcement dated 18 Sep 2015 titled "Eyre Iron Joint Venture Resource Update".

<sup>3</sup> ASX:LML 8 December 2025 Lincoln signs MOU with Revera Energy for Eyre Magnetite Project, SA

# Kookaburra Graphite Project Outcropping High-Grade Graphite within an Existing Mining Lease

## Competitive Advantages:

- **High-grade graphite at surface** within an existing Mining Lease.
- Located near **key infrastructure** on South Australia's Eyre Peninsula.
- PFS showed the project has a pre-tax NPV<sub>10</sub> of A\$114m, low start-up capital of \$29M, and an average cash EBITDA margin of 42%.<sup>1</sup>
- Recently **signed collaboration agreement with SCN Canada Inc**, a small modular reactor developer, to explore opportunities for potential graphite sales.<sup>2</sup>



<sup>1</sup> LML ASX announcement dated 28 October 2024, titled "Kookaburra Graphite Project PFS progresses Lincoln's aim to be Australia's Next Graphite Producer".

<sup>2</sup> ASX:LML 17 December 2025 "Lincoln signs collaboration agreement for Kookaburra Graphite Project"

# Uranium: A Strategic Position in a Leading Province

## Lincoln has multiple highly prospective uranium targets

### Highlights include:

- **Jungle Dam:** Intersected up to **570 ppm U** in scout drilling<sup>1</sup>;
- **Yallunda:** Historic drill hole KA4<sup>2</sup> intersected up to **350 ppm U** near contact with intrusive granite. Field mapping graded up to **1.08% U** using portable Niton XRF analysis southwest of KA4 along the regional radiometric trend<sup>3</sup>.

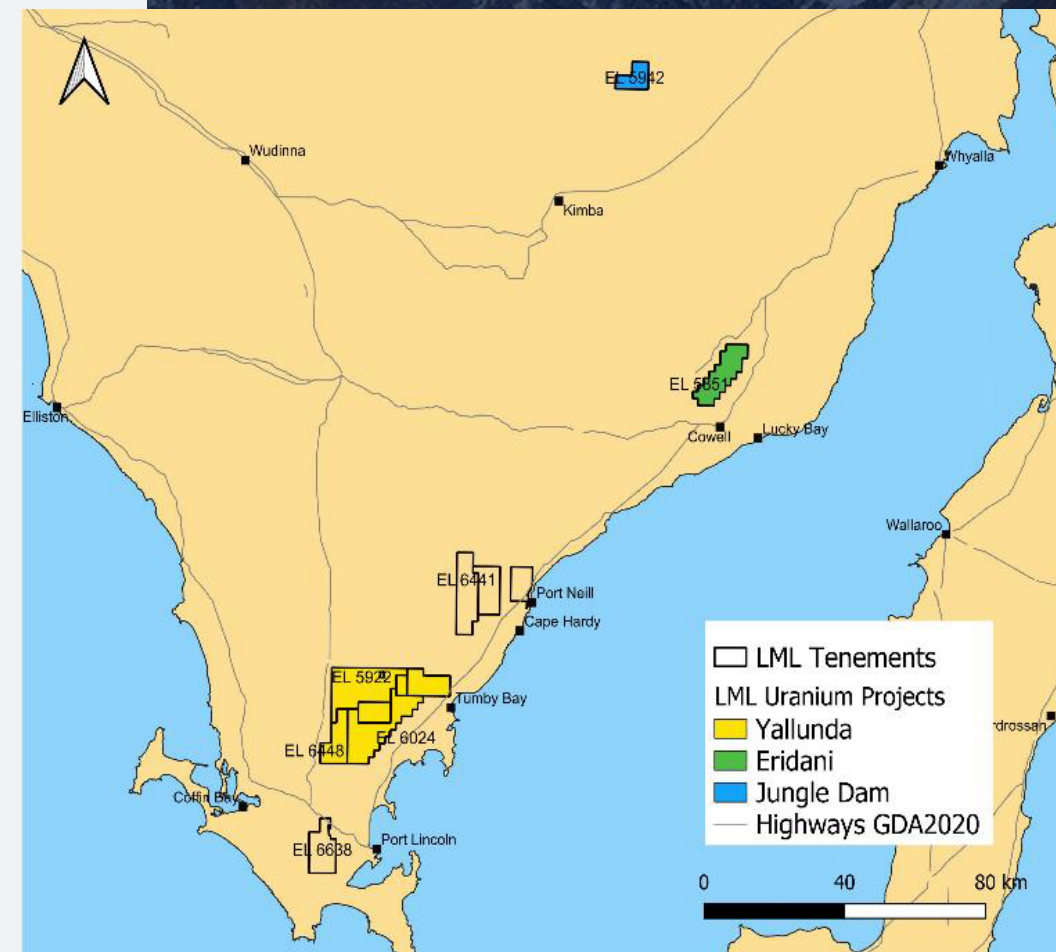
Portable XRF readings are not a replacement for comprehensive laboratory analysis and only reflect elemental concentration at specific points, rather than the entire rock. While they assist in geological interpretation, verifying metal presence and selecting which samples should undergo full laboratory analysis, they offer only an approximate concentration.

- **Eridani:** Surface rock chip sampling identified outcropping carnotite with **assays up to 423ppm**.<sup>4</sup>

### Located close to existing deposits in the same geological setting:

- Lincoln's uranium projects have known analogues in similar geological settings which provide strong confirmation of prospectivity and confirm scale potential.

<sup>1</sup> LML ASX 21 December 2007, Drilling results at Wilcherry. <sup>2</sup> LML ASX 14 October 2024, Uranium Exploration to Commence at Yallunda. <sup>3</sup> LML ASX 30 October 2009, Quarterly Activities Report. <sup>4</sup> LML ASX 13 November 2024, High-grade mineralisation located at Eridani Project. The pre-2012 information was prepared and first disclosed under the JORC Code 2004. It has not been updated since to comply with the JORC Code 2012 on the basis that the information has not materially changed since it was last reported.



# Appendix 2 - Mineral Resources Summary

## Eyre Magnetite Project – Mineral Resources Summary

Deposit Name	JORC Year Status	Classification	Tonnes (Mt)	Mass Recovery (%)	Fe Head (%)	SiO2 Head (%)	Fe Con (%)	SiO2 Con (%)
Koppio	2004	Measured	10.8	18	22.7	52.3	68.2	4.1
		Indicated	106.6	19.9	24.3	52	68.6	3.6
		Inferred	99.6	21.1	24.5	52.3	68.8	3.4
		<b>Total</b>	<b>217</b>	<b>20.4</b>	<b>24.3</b>	<b>52.2</b>	<b>68.7</b>	<b>3.5</b>
Brennand	2004	Indicated	155.8	18.8	24.2	50.8	67.8	4.5
		Inferred	110.4	18	24.4	50.6	67.2	4.9
		<b>Total</b>	<b>266.2</b>	<b>18.5</b>	<b>24.3</b>	<b>50.7</b>	<b>67.6</b>	<b>4.7</b>
Bald Hill	2012	Inferred	289.4	21.9	26.8	51	67.4	5.2
		<b>Total</b>	<b>289.4</b>	<b>21.9</b>	<b>26.8</b>	<b>51</b>	<b>67.4</b>	<b>5.2</b>
Kapperna	2004	Indicated	38.5	35.1	29.7	43.1	69.9	2.2
		Inferred	23.3	32.8	29.7	43.8	68.9	3.3
		<b>Total</b>	<b>61.8</b>	<b>34.2</b>	<b>29.7</b>	<b>43.4</b>	<b>69.5</b>	<b>2.6</b>
Iron Mount	2004	Inferred	135	29.3	25.5	36.7	62.1	9.1
		<b>Total</b>	<b>135</b>	<b>29.3</b>	<b>25.5</b>	<b>36.7</b>	<b>62.1</b>	<b>9.1</b>
Carrow	2004	Indicated	72.4	28.7	27.3	40.1	68.5	3.3
		Inferred	86.8	27	27.2	41.6	65.4	6.7
		<b>Total</b>	<b>159.2</b>	<b>27.8</b>	<b>27.2</b>	<b>40.9</b>	<b>66.8</b>	<b>5.2</b>
Barnes	2004	Indicated	12.3	22.1	26.6	41.1	66.8	5.1
		Inferred	88.9	17.1	23.5	44.1	66	4.9
		<b>Total</b>	<b>101.2</b>	<b>17.7</b>	<b>23.9</b>	<b>43.7</b>	<b>66.1</b>	<b>4.9</b>
Rifle Range	2004	Inferred	3.5	22.6	27.1	38.7	68	3.4
		<b>Total</b>	<b>3.5</b>	<b>22.6</b>	<b>27.1</b>	<b>38.7</b>	<b>68</b>	<b>3.4</b>
<b>Total</b>			<b>1233</b>	<b>22.7</b>	<b>25.6</b>	<b>47.3</b>	<b>67.0</b>	<b>5.1</b>

The mineral resource information on this slide has been extracted from the following two reports.

<sup>1</sup> Centrex Minerals ASX announcement dated 18 Sep 2015 titled "Eyre Iron Joint Venture Resource Update".

<sup>2</sup> Lincoln Minerals ASX announcement dated 7 June 2012 titled "New Gum Flat Iron Ore Resource".

The pre-2012 information was prepared and first disclosed under the JORC Code 2004. It has not been updated since to comply with the JORC Code 2012 on the basis that the information has not materially changed since it was last reported.

## Kookaburra Graphite Project Total Mineral Resources<sup>3</sup>

Measured and Indicated Mineral Resource Estimates <sup>1</sup>	Cut-off Grade (%TGC)	Tonnage (Mt)	Average Grade (% TGC)	Contained Graphite (kt)
<b>Kookaburra Gully</b>				
Measured	2%	1.00	11.77	118
Indicated	2%	1.44	11.73	169
Inferred	2%	1.07	11.66	125
<b>Sub Total KG Measured + Indicated+ Inferred</b>	<b>2%</b>	<b>3.51</b>	<b>11.72</b>	<b>412</b>
<b>Koppio</b>				
Indicated	2%	2.84	7.53	214
Inferred	2%	0.79	6.72	53
<b>Sub Total KG Indicated+ Inferred</b>	<b>2%</b>	<b>3.63</b>	<b>7.35</b>	<b>267</b>
<b>Kookaburra Gully Extended</b>				
Indicated		0.58	7.73	45
Inferred	2%	5.12	4.86	249
<b>Sub Total KG Indicated+ Inferred</b>	<b>2%</b>	<b>5.70</b>	<b>5.15</b>	<b>294</b>
<b>COMBINED TOTAL MEASURED + INDICATED + INFERRED</b>	<b>2%</b>	<b>12.84</b>	<b>7.57</b>	<b>973</b>

<sup>3</sup> Lincoln Minerals ASX announcement dated 16 April 2024 titled "Update to Target Achieved of Doubling the Kookaburra Graphite Project Resource".