

MONS PROJECT, WA

Release Date 25 February 2026

BLOCK 3 MONS GALLIUM DEPOSIT, WA

**Scoping Study underway on Block 3  
Mons Gallium Project in WA**

**The work will be carried out in parallel with test work currently underway in the U.S. under a plan to supply U.S. military and other advanced technology users**

Nimy Resources (ASX: NIM) is pleased to advise that a Scoping Study is now underway on its Mons Gallium Project in WA.

**Summary:**

- The study will **assess mining, processing and metallurgical aspects of the Mons Gallium-Rare Earths Project Block 3 JORC Inferred Resource.**
- The study will also **assess capital and process operating costs, product marketing and pricing, financial modelling** and provide a preliminary view of the project's economic outlook.
- **Nimy has commissioned Perth-based consultants Strategic Metallurgy to conduct the study, which is expected to be completed in the 2nd quarter of 2026.**
- Strategic Metallurgy is **currently undertaking metallurgical test work on Block 3 material**, with the results to feed into the Scoping Study.
- The study will **assess the processing routes for production of commercial-grade gallium concentrate** and provide important data concerning flowsheet selection, metallurgical recoveries, and preliminary project economics.
- **The study will be done in parallel with tests now being done in the U.S. as part of Nimy's plan to supply U.S. military and other advanced technology users.**
- The **U.S. tests are being done under Nimy's collaboration agreement with US listed company M2i Global.**
- M2i Global is a USA based company specialising in the development and execution of a complete global value supply chain for critical minerals.

### **Nimy Managing Director Luke Hampson said:**

*“The work underway at Strategic Metallurgy in producing a commercial grade gallium concentrate will flow into the Scoping Study and is another key milestone on the path to becoming an important gallium supplier to the U.S.*

*“Strategic Metallurgy are a leading metallurgical consulting group based in Perth and we are very pleased to have such a very capable and high-quality partner carrying out this very important work.*

*“We now have several work streams occurring in parallel, with metallurgical tests being done in Perth and the U.S. The results of these tests will provide vital information about the optimum processing routes in order to process the concentrate into high purity gallium so sought after in the U.S.”*

### **Strategic Metallurgy Chairman Gary Johnson said:**

*“We are delighted to be selected by Nimy to apply our critical minerals expertise in what we believe to be an exciting and unique gallium and associated Total Rare Earths (TREOs) resource project.*

*“We believe Block 3 has the potential to be a world-class development opportunity and we look forward to progressing the metallurgical test work to support the next steps in the Company’s development journey”.*

### **About Strategic Metallurgy:**

Strategic Metallurgy (SM) is an innovative metallurgical consulting group based in Perth WA, with proven expertise in critical minerals, base metals, gold, PGE and battery metals. They have established a global reputation for developing, managing and implementing innovative metallurgical solutions for clients in Australia and around the world. SM is a horizontally integrated consulting firm with in-house capabilities in test work/management, process development & design, piloting, site operations, optimisation and development studies (Scoping/PFS/DFS).

### **About M2i Global:**

M2i Global is a NYSE-listed advisory firm specialising in U.S. government funding, federal loan programs, and structured offtake partnerships. It assists international critical minerals and energy companies in securing non-dilutive capital and aligning with U.S. industrial policy. Led by former officials from the DoD, DoE, and EXIM Bank, and senior figures from Wall Street and global commodity markets, M2i brings deep networks across Washington D.C., capital markets, and supply chains to unlock strategic funding and partnership opportunities.

Table 1 – Grade-Tonnage tabulation for material within inferred resource volume (refer ASX release 13/11/2025)

Cut Off Ga <sub>2</sub> O <sub>3</sub> (g/t)	Tonnage (Mt)	Grade (g/t)			Contained Metal * (t)		
		Ga <sub>2</sub> O <sub>3</sub>	TREO	NdPr	Ga <sub>2</sub> O <sub>3</sub>	TREO	NdPr
0	65.8	41	502	96	2,730	33,040	6,290
10	65.8	41	502	96	2,730	33,030	6,290
20	64.3	42	507	96	2,700	32,600	6,180
30	42.6	50	571	106	2,140	24,300	4,510
40	18.5	72	598	113	1,320	11,050	2,090
50	13.4	82	583	111	1,100	7,790	1,480
60	9.5	93	563	108	880	5,340	1,020
<b>70</b>	<b>7.2</b>	<b>102</b>	<b>538</b>	<b>104</b>	<b>740</b>	<b>3,890</b>	<b>750</b>
80	5.4	112	508	101	600	2,730	540
90	4	121	492	99	480	1,950	390
100	2.9	131	448	92	380	1,290	270

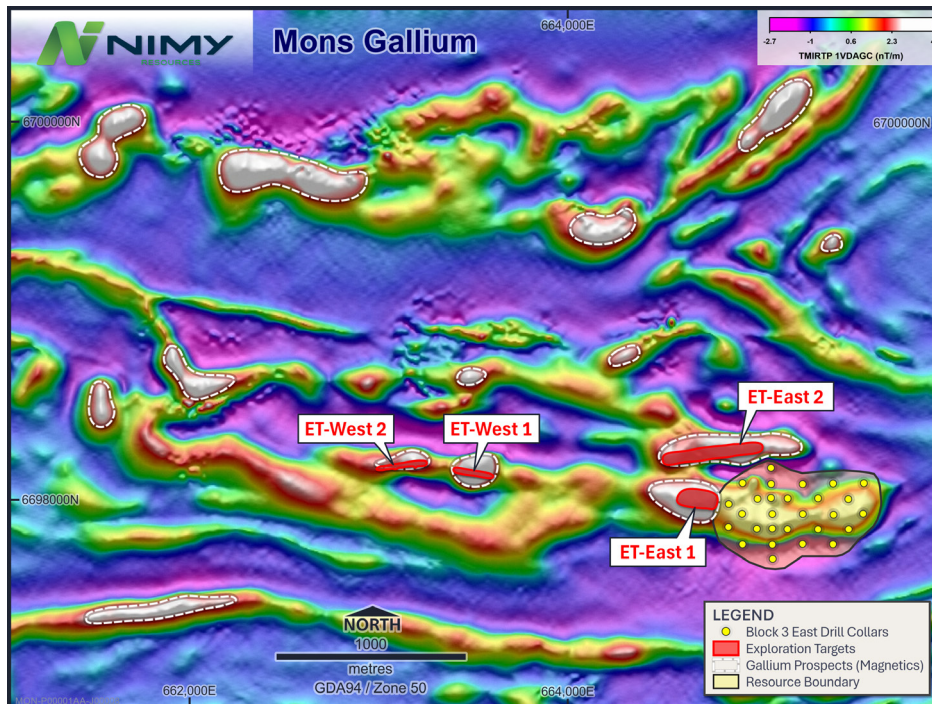


Figure 1 – The high-grade Mons Gallium Inferred JORC Resource boundary, relative to gallium exploration targets and gallium prospects interpreted through high resolution aeromagnetic survey (refer ASX release 03/02/26)

NOTE: The Exploration Target quantities and grades are conceptual in nature. Insufficient exploration has been conducted to estimate Mineral Resources and it is uncertain if further exploration would result in the estimation of Mineral Resources.

## Previously Related Announcements:

10/02/26	Nimy Resources to Present at RSS Summer Series Conference
06/02/26	Amended - High Grade Gallium Test Material Shipment to U.S
04/02/26	High Grade Gallium Ore Shipment to U.S.
03/02/26	Significant Gallium Extensions identified at Block 3
26/11/25	CSIRO Kick-Start Advancing Nimy Gallium Exploration
19/11/25	Nimy Resources Receives \$1.38m R&D Refund
13/11/25	Amended Extremely high-grade Gallium and Rare Earth Resource
12/11/25	Extremely high-grade Gallium and Rare Earths Resource
22/10/25	Share Purchase Plan Closes Oversubscribed
15/10/25	Geochemical work to extend mineralisation commences
03/09/25	Nimy Appoints Tony Tang as Technical Advisor
27/08/25	Critical Metals Exploration Update August 2025
27/08/25	Nimy Raises \$1.72m via Share Placement
05/08/25	Nimy Resources signs M2i Agreement
04/08/25	Diggers and Dealers Company Update August 2025
29/07/25	Gallium Resource Drilling Final Assays
04/07/25	Outstanding Gallium assays continue at Block 3
20/06/25	Gallium Drilling Completed
16/06/25	High grade Gallium in first assays
05/06/25	Drilling confirms potential Gallium extensions at Block 3
29/05/25	Gallium Phase 2 Drilling Update
26/05/25	Outcropping schist east of the Block 3 Gallium Discovery
21/05/25	\$2.75m Placement to advance Gallium JORC Resource Drilling

**Company Information**  
Nimy Resources Limited  
Richard Moody

[info@nimyresources.com.au](mailto:info@nimyresources.com.au)

(08) 9261 4600

**Investor Information**  
Read Corporate  
Paul Armstrong

[info@readcorporate.com.au](mailto:info@readcorporate.com.au)

(08) 9388 1474

*This announcement has been approved for release by the Nimy Resources Board.*

#### **Board and Management**

**Neil Warburton**  
Non-Executive Chairman  
**Luke Hampson**  
Managing Director  
**Bruce Stewart**  
Non-Executive Director

**Henko Vos**  
Joint Co-Secretary/CFO  
**Geraldine Holland**  
Joint Co-Secretary

**John Simmonds**  
Technical Advisor - Geology  
**Fergus Jockel**  
Exploration Manager

#### **Capital Structure**

Shares on Issue – 353.46m  
Options on Issue – 85.4m

**Contact:** [info@nimyresources.com.au](mailto:info@nimyresources.com.au)

**Nimy Resources ASX:NIM**

## About Nimy Resources and the Mons Project

Nimy Resources is a Western Australian exploration company that has prioritised the development of its recently discovered Mons Belt, situated 370km northeast of Perth and 140km north-northwest of Southern Cross, a Tier 1 jurisdiction in Western Australia.

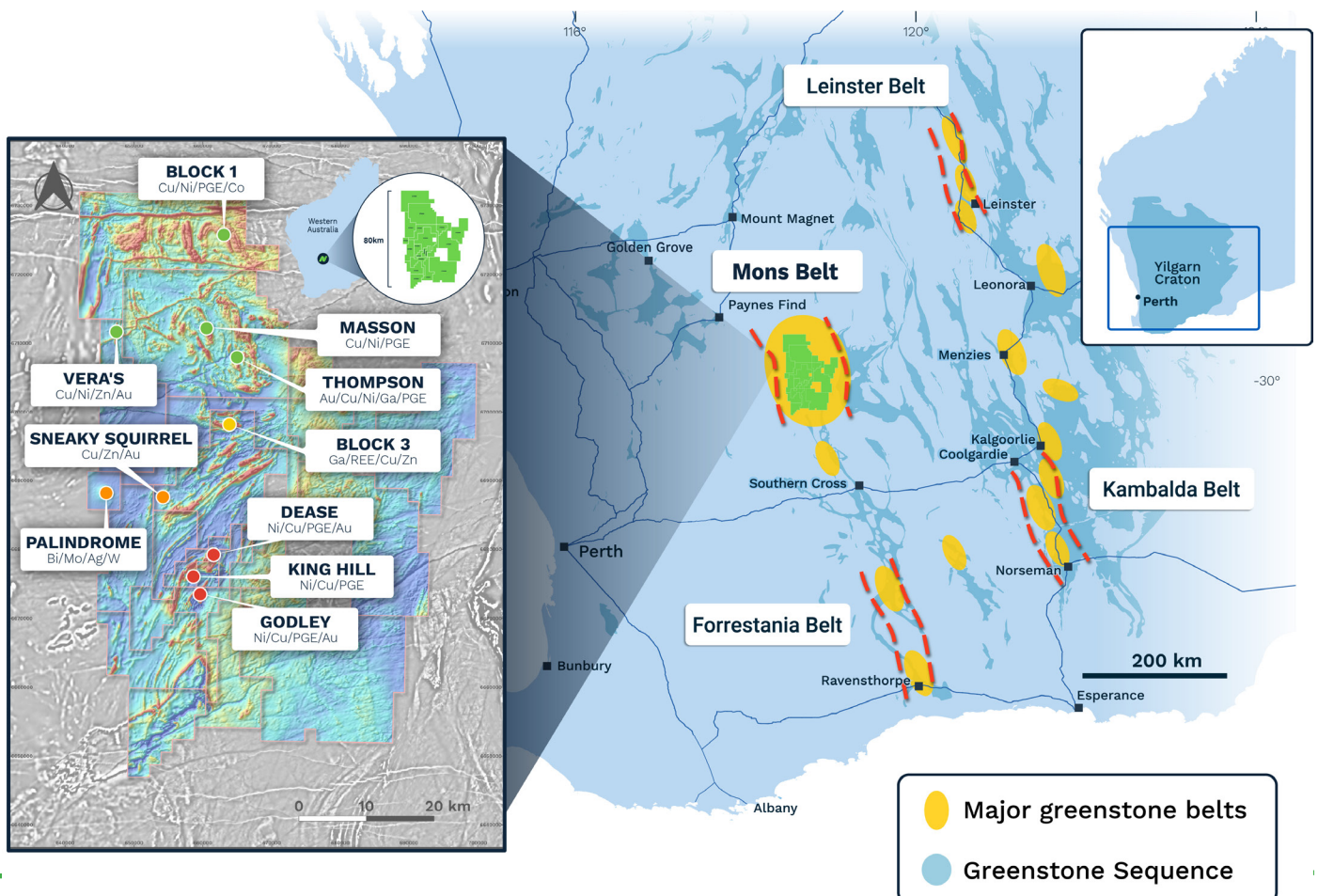
The Mons Belt represents a district scale discovery, spanning ~80km x 30km over 17 tenements with a north/south strike of some 80km of mafic and ultramafic sequences covering ~3004km<sup>2</sup> north of the Forrestania greenstone belt.

The Mons Belt provides a new and exciting frontier in critical metal and gold exploration in Western Australia, the company is currently working with the CSIRO to advance the lithology and mineralisation types within one of Australia’s newest greenstone belt discoveries in the Yilgarn Craton, a region with significant untapped potential.

Nimy Resources believes the Mons Belt offers multi commodity potential with the initial discovery of Masson (Cu, Ni, Co, Au & PGE’s) in addition to Block 3 East Prospect with high-grade gallium (Ga) discovered in the northern tenements.

In addition to these discoveries, the southern tenements have significant fertile komatiite sequences like those found in the Kambalda region of WA.

Nimy Resources is always mindful of its shareholders and the need to continue efforts in creating shareholder value through a methodical and science-based approach.



### Competent Person's Statement

The information contained in this report that pertains to the exploration results and Mons Gallium Block 3 Exploration Targets, is based upon information compiled by Mr. Fergus Jockel, a full-time employee of Fergus Jockel Geological Services Pty Ltd. Mr. Jockel is a Member of the Australasian Institute of Mining and Metallurgy (1987) and has sufficient experience which is relevant to the style of mineralisation and type of deposit under consideration and to the activity which he is undertaking to qualify as a Competent Person as defined in the December 2012 edition of the Australasian Code for Reporting of Exploration Results, Mineral Resources and Ore Reserves" (the JORC Code). Mr Jockel consents to the inclusion in the report of the matters based upon his information in the form and context in which it appears.

### No New Information

To the extent that this announcement contains references to prior exploration results which have been cross referenced to previous market announcements made by the Company, unless explicitly stated, no new information is contained. The Company confirms that it is not aware of any new information or data that materially affects the information included in the relevant market announcements and, in the case of estimates of Mineral Resources, that all material assumptions and technical parameters underpinning the estimates in the relevant market announcements continue to apply and have not materially changed.

### Forward Looking Statement

This report contains forward looking statements concerning the projects owned by Nimy Resources Limited. Statements concerning mining reserves and resources may also be deemed to be forward looking statements in that they involve estimates based on specific assumptions. Forward-looking statements are not statements of historical fact and actual events, and results may differ materially from those described in the forward-looking statements as a result of a variety of risks, uncertainties and other factors. Forward looking statements are based on management's beliefs, opinions and estimates as of the dates the forward-looking statements are made and no obligation is assumed to update forward looking statements if these beliefs, opinions and estimates should change or to reflect other future developments.