

12 August 2013

Farm-In Agreement with Panoramic Resources Ltd

Gateway Mining Ltd ('Gateway' or 'the Company') is extremely pleased to announce that it has entered into an agreement with Panoramic Resources Ltd ('Panoramic') whereby it will farm-in to tenement M57/633 ('the Tenement') located in Gidgee, WA.

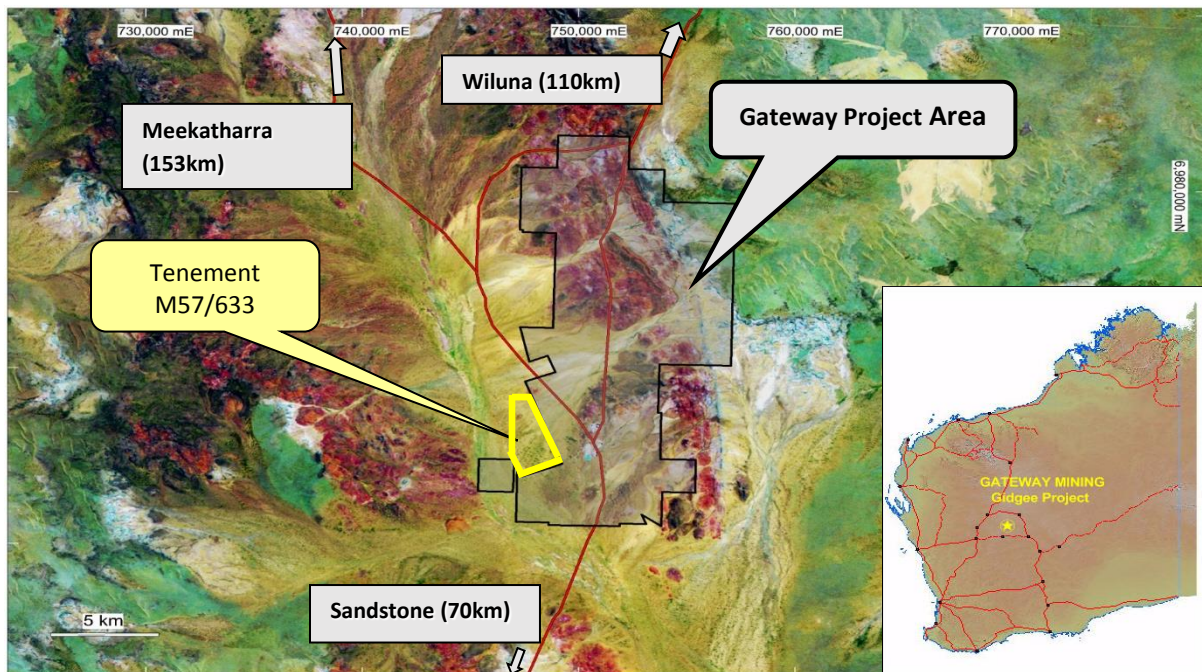


Diagram 1: Location of M57/633

The key terms of the agreement are:

- Gateway to spend a minimum of \$200,000 on the Tenement within 18 months prior to any decision to withdraw
- Gateway to spend a further \$1,000,000 on the Tenement to earn a 70% interest within a 30 month period
- Upon Gateway earning its 70% interest, Panoramic will retain a 30% interest free-carried through to successful completion of a Feasibility Study
- Gateway will be the operator of the Tenement and keep the Tenement in good standing

ABN: 31 008 402 391
Level 8, 210 George Street Sydney NSW 2000
GPO Box 225 Sydney NSW 2001
Tel: 61 2 9191 4543
Fax: 61 2 8247 7999
Website: www.gatewaymining.com.au



Trent Franklin, Non-Executive Chairman of Gateway, said, "I am extremely pleased that we have been able to execute an agreement with Panoramic. Panoramic have an enormous amount of experience and technical expertise which may provide significant benefit to Gateway as it develops its tenement package."

"Further, Panoramic are investing significant funds into the Gidgee area to potentially re-start the Gidgee Gold Mine, so establishing a working relationship with them may yield further opportunities to cooperate on other tenements and prospects as we move forward."

Over the coming weeks Gateway will design a program of exploration for M57/633. It is expected a small EM surveying program will occur before the end of the year, and potentially a small RC drilling program to follow up any historical anomalies on the tenement.

Updates will be provided to the market in due course.

About Gateway Mining Limited

Gateway holds approximately 150sqkm of tenements over the Gum Creek Greenstone Belt in the Yilgarn Craton, Gidgee WA (600km NE of Perth). The tenements have all the hallmarks of a significant new VMS province, along with existing gold mineralisation throughout the project. The Company is well funded and plans to test a large number of highly prospective targets over the remainder of 2013. Gateway also has in place a very experienced management and technical team.