



Tribeca Future Facing Commodities Singapore

March 2024



Disclaimer & Forward-Looking Statements



This presentation (Presentation) has been prepared by Premier1 Lithium Ltd. ACN 637 198 531 (Premier1 Lithium or the Company), is current at the date of this Presentation and contains information in a summary form and should be read in conjunction with Premier1 Lithium's other periodic announcements available at Premier1 Lithium.com. The information presented should not be used for any purpose other than gaining general knowledge of the Company. The presentation is not a recommendation to invest in Premier1 Lithium and the information presented does not purport to include all information that a person may require in order to decide to invest in Premier1 Lithium. To the maximum extent permitted by law, each Premier1 Lithium Party (Premier1 Lithium or any of its respective directors, officers, employees, affiliates, partners, consultants, agents, representatives or advisers (including, without limitation, advisers and their related bodies corporate, shareholders or affiliates, and any of their respective officers, directors, employees, affiliates, partners, representatives, consultants, agents or advisers)) expressly disclaims any and all liability (whether direct, indirect, consequential or contingent), including, without limitation, any liability arising out of fault or negligence on the part of any person, for any loss, expenses, damages or costs arising from the use of information contained in this Presentation including representations or warranties or in relation to the accuracy or completeness of the information, statements, opinions or matters, express or implied, contained in, arising out of or derived from, or for omissions from, this Presentation including, without limitation, any financial information, any estimates, projections, forecasts or forward-looking statements and any other derived financial information. Anyone proposing to rely on or use such information should independently verify and check the accuracy, completeness, reliability and suitability of the information and should obtain independent and specific advice from appropriate professionals or experts. Nothing in this Presentation should be construed as either an offer to sell or a solicitation to buy or sell Premier1 Lithium's securities.

Future performance and forward-looking statements

This Presentation contains or may contain certain 'forward-looking statements' and comments about future events, including in relation to Premier1 Lithium's business, plans and strategies and expected trends in the industry in which Premier1 Lithium currently operates. Forward-looking statements can generally be identified by the use of words such as 'expect', 'anticipate', 'estimate', 'intend', 'believe', 'guidance', 'should', 'could', 'may', 'will', 'predict', 'plan' and other similar expressions. Indications of, and guidance or outlook regarding, future performance are also forward-looking statements. Forward-looking statements involve inherent risks, assumptions and uncertainties, both general and specific, and there is a risk that such predictions, forecasts, projections and other forward-looking statements will not be achieved. Forward looking statements are based on Premier1 Lithium's good faith assumptions as to the financial, market, regulatory and other relevant environments that will exist and affect the Company's business and operations in the future. A number of important factors could cause Premier1 Lithium's actual results to differ materially from the plans, objectives, expectations, estimates, targets and intentions expressed in such forward-looking statements, and many of these factors are beyond Premier1 Lithium's control. Forward-looking statements may prove to be incorrect, and circumstances may change, and the contents of this Presentation may become outdated as a result. Premier1 Lithium does not give any assurance that the assumptions will prove to be correct. Readers should note that any past performance is given for illustrative purposes only and should not be relied on as (and is not) an indication of the Company's views on its future financial performance or condition. Past performance of the Company cannot be relied on as an indicator of (and provides no guidance as to) future performance including future share price performance. Except as required by law or regulation, Premier1 Lithium undertakes no obligation to provide any additional or updated information whether as a result of new information, future events or results or otherwise.

Competent Person's Statement

Information in this Presentation that relates to exploration targets, exploration results and mineralisation is based on and fairly reflects information compiled by and conclusions derived by Mr Robert Rowe, who is a member of The Australasian Institute of Mining and Metallurgy (AusIMM) and a Registered Professional Geoscientist (RPG) in the field of Mineral Exploration with the Australian Institute of Geoscientists (AIG). Mr Rowe is a full-time employee and Chief Operating Officer of SensOre and is engaged by Premier1 Lithium under a Demerger Implementation Deed between the companies. Mr Rowe has sufficient experience that is relevant to the style of mineralisation and type of deposit under consideration and to the activity being undertaken to qualify as a Competent Person as defined in the 2012 Edition of the Australasian Code for Reporting of Exploration Results, Mineral Resources and Ore Reserves (JORC Code). Mr Rowe consents to the inclusion in this Presentation of the matters based on his information in the form and context in which it appears.

Authorisation

This Presentation has been authorised for release by the Premier1 Lithium Ltd Board.

Corporate Snapshot

Capital Structure and Financials as of 31 Jan 2024

A\$7.0M
Market Cap

A\$0.04
Share Price

A\$3m
Raised¹

Nil
Net Debt²

174.6M
Shares Issued

Shareholder Summary

Deutsche Rohstoff	19.9%
Previous SensOre shareholders	46%
New Placement Shareholders	34%

Focus on Western Australia

1 wholly owned or optioned project and several Joint Venture projects



Board

Nic Limb	Non-Executive Chairman
Anja Ehser	Non-Executive Director
Richard Taylor	Interim CEO and Executive Director

¹ \$3m placement to new and existing institutional investors completed on 25 January 2024
² As part of the demerger agreement with SensOre_X, PLC maintained an R&D Finance Facility of \$0.4m. The terms of this facility were extended by PLC to SensOre_X on identical offsetting terms both being repayable by 31.10.2024

Premier1 Lithium: New Approach to Lithium Exploration



INDUSTRY LEADING EXPLORATION

PLC prospect portfolio has been identified utilizing industry leading machine learning (ML) technologies



WHOLLY OWNED PORTFOLIO

Flagship wholly owned or optioned Abbotts North Project with outcropping lithium bearing pegmatites



JOINT VENTURE PARTNERS

Gateway Mining, Venture Minerals, Firetail Resources, LithGold Minerals



POSITIVE RESULTS

Discovery of new pegmatite field within the Abbotts Greenstone Belt – over 1.5km of strike with 1.25% Li₂O at the Buttamah Prospect

Premier1 Lithium Portfolio

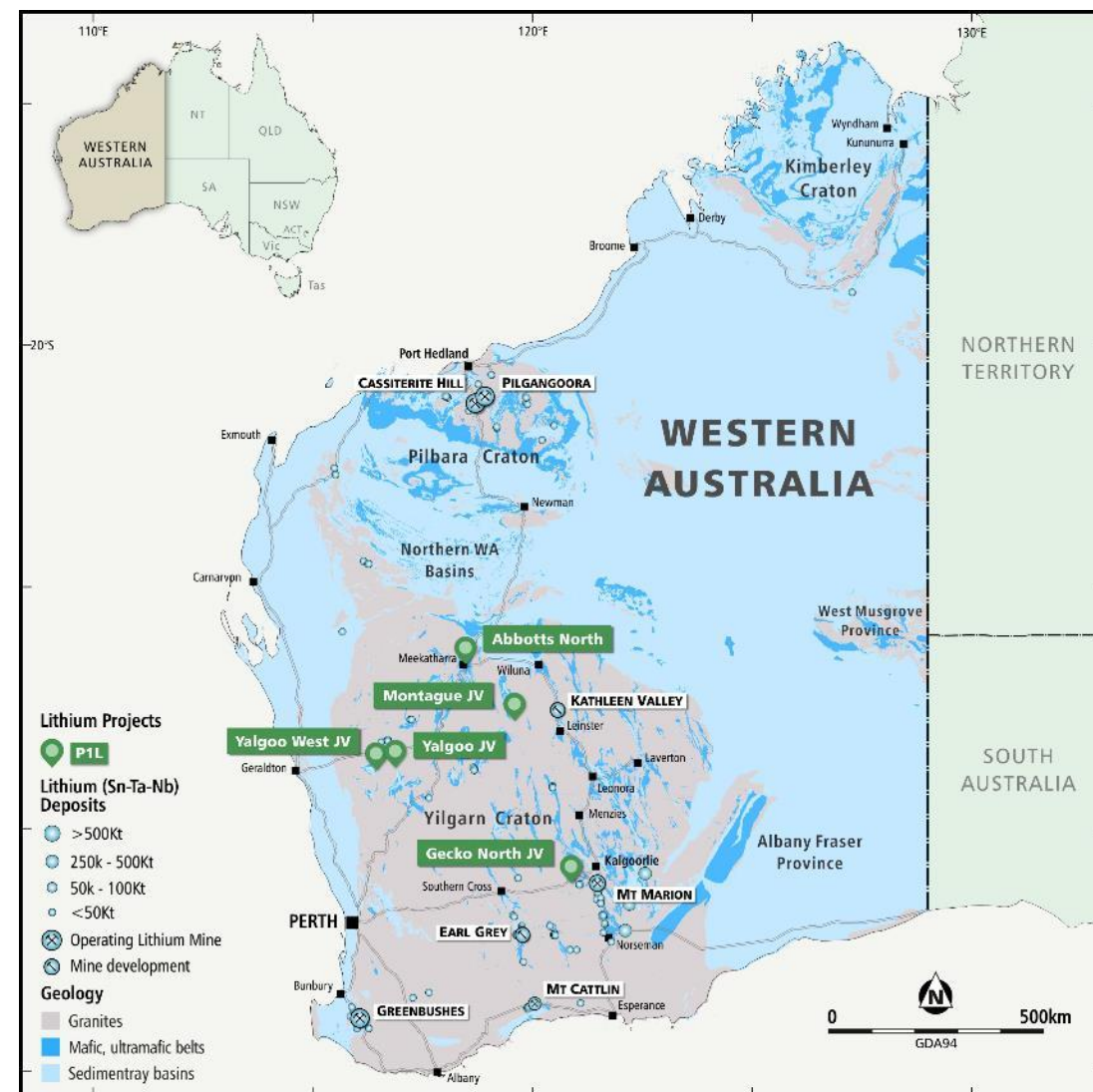
Premier1 Lithium has secured a portfolio of lithium rights in the best jurisdiction in the world for hard rock lithium

Wholly owned or optioned flagship project:

- Abbotts North (Buttamahia Prospect)

Other Joint Ventures:

- Yalgoo + Yalgoo West
- Montague
- Gecko North

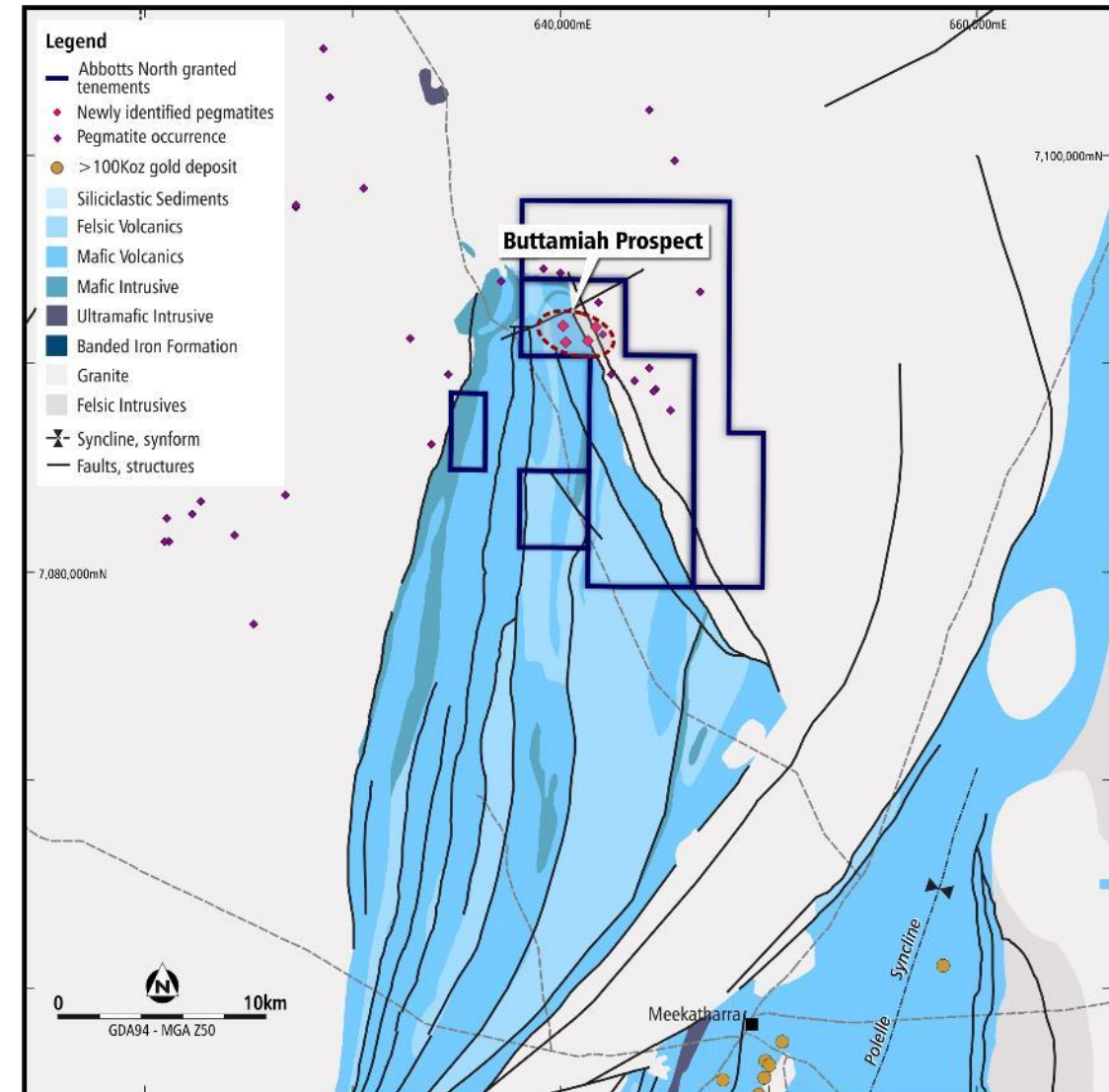


Flagship Abbotts North Project

- Predicted target generated through machine learning
- Previously unrecognised Li potential within greenstone belt, no previous Li exploration
- Favourable mafic stratigraphy adjacent to an interpreted fertile granite
- GSWA and newly mapped pegmatites
- 3 granted EL's and 1 recent application
- First phase RC drilling completed in March

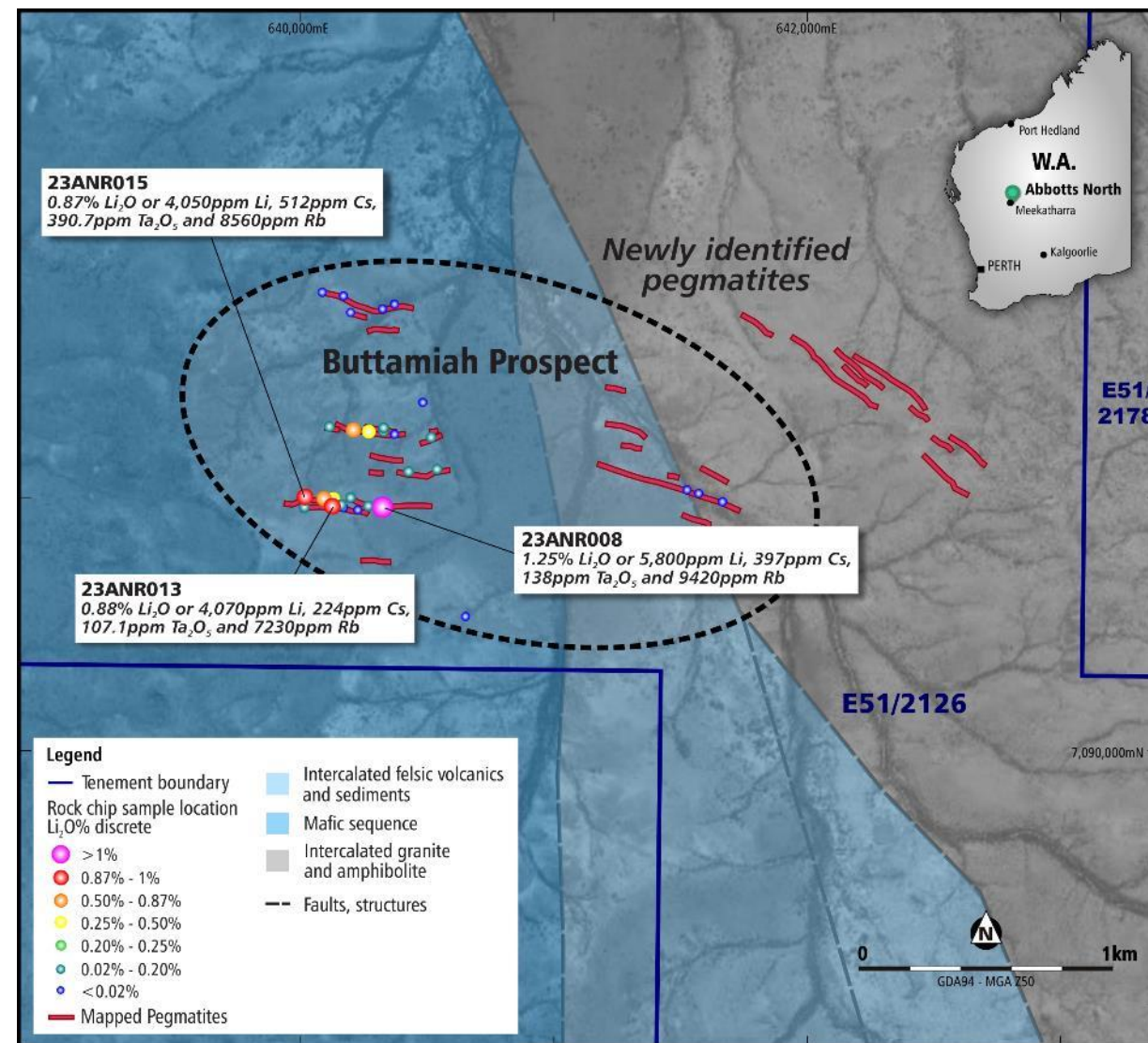
Next steps

- Extend fieldwork over entire licence package
- Phase 2 Heritage clearance
- Preparation for second RC drill program based on results of phase 1



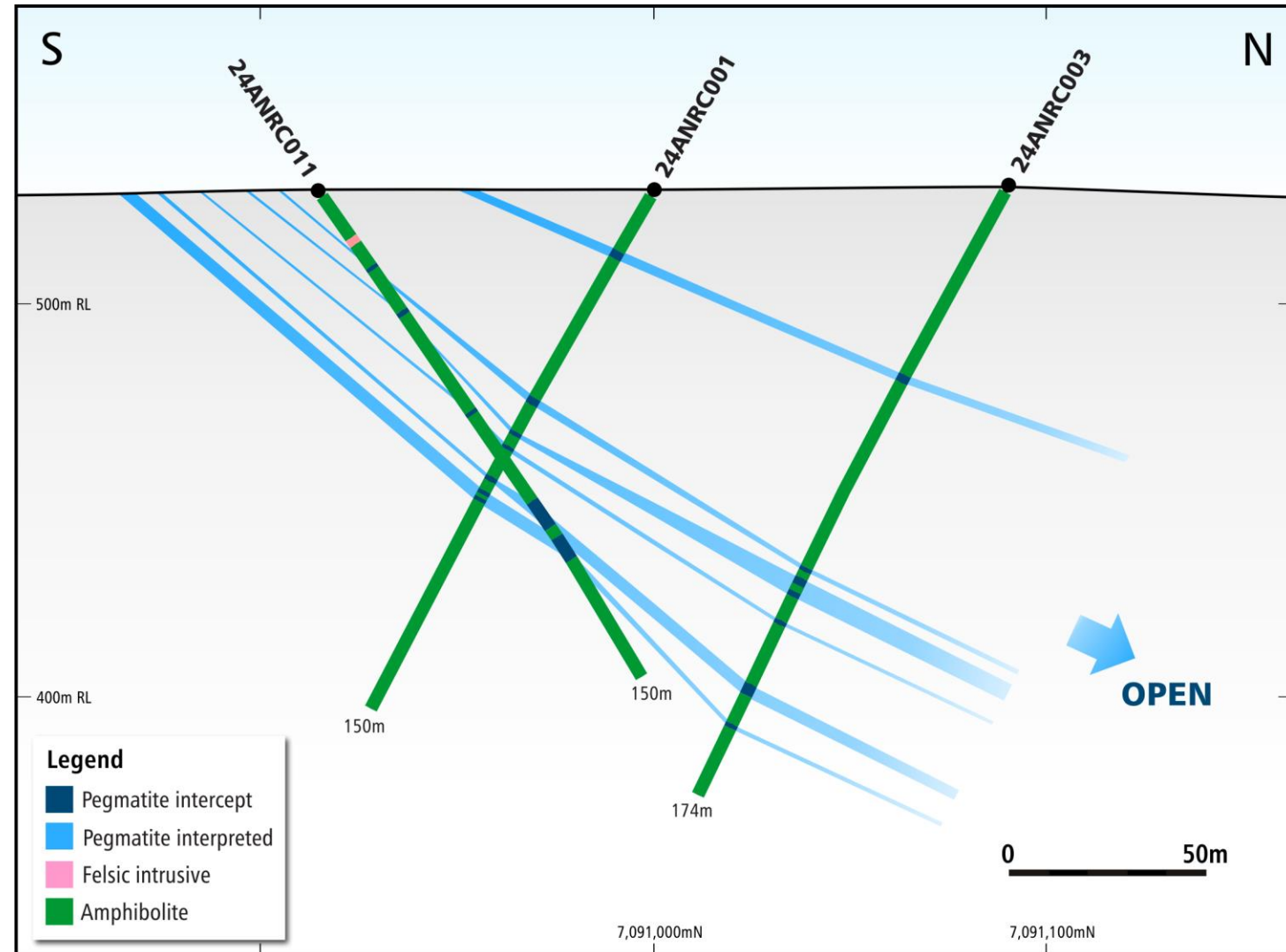
Buttamiah Prospect

- Rock chip assays returned up to 1.25% Li_2O at the Buttamiah Prospect
- Pegmatites are on average 2m to 3m wide and consist of several parallel pegmatite dykes
- Individual pegmatites at least 350m in strike with main Buttamiah Prospect extending over ca. 1.5km



Buttamiah Prospect

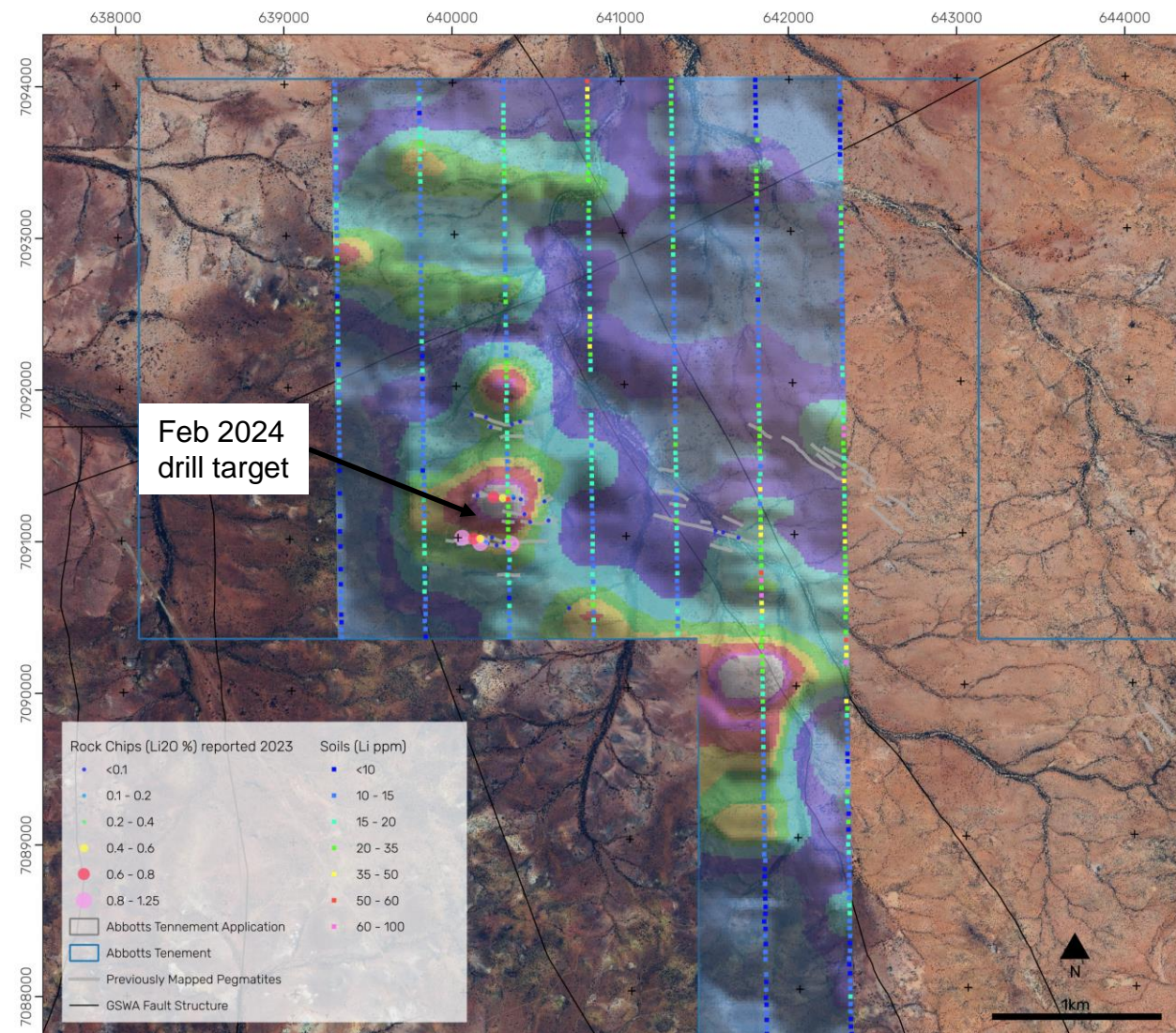
- First phase of drilling completed in March, with 11 RC holes totaling 1,623m at main Buttamiah Prospect
- Drilling confirms orientation and down depth continuity of the stacked pegmatite system
- Program identifies multiple pegmatite layers
- Samples submitted to lab for multi element analyses with results expected in April
- Pegmatite mapping and sampling underway to define further drill targets



Abbotts North – Licence Scale Potential

- Initial soil sampling identified several areas of similar tenure as found at the Buttamah Prospect with outcropping lithium bearing pegmatites
- Initial ground truthing of large soil anomaly in the southeast confirmed the presence of discrete sub-cropping pegmatites
- Follow up work planned on all soil anomalies to delineate further drill targets for 2024

Percentile Value	30	60	80	90	95	98	99	100
Factor Score	-0.40	-0.28	0.80	1.07	1.25	1.50	1.61	1.77

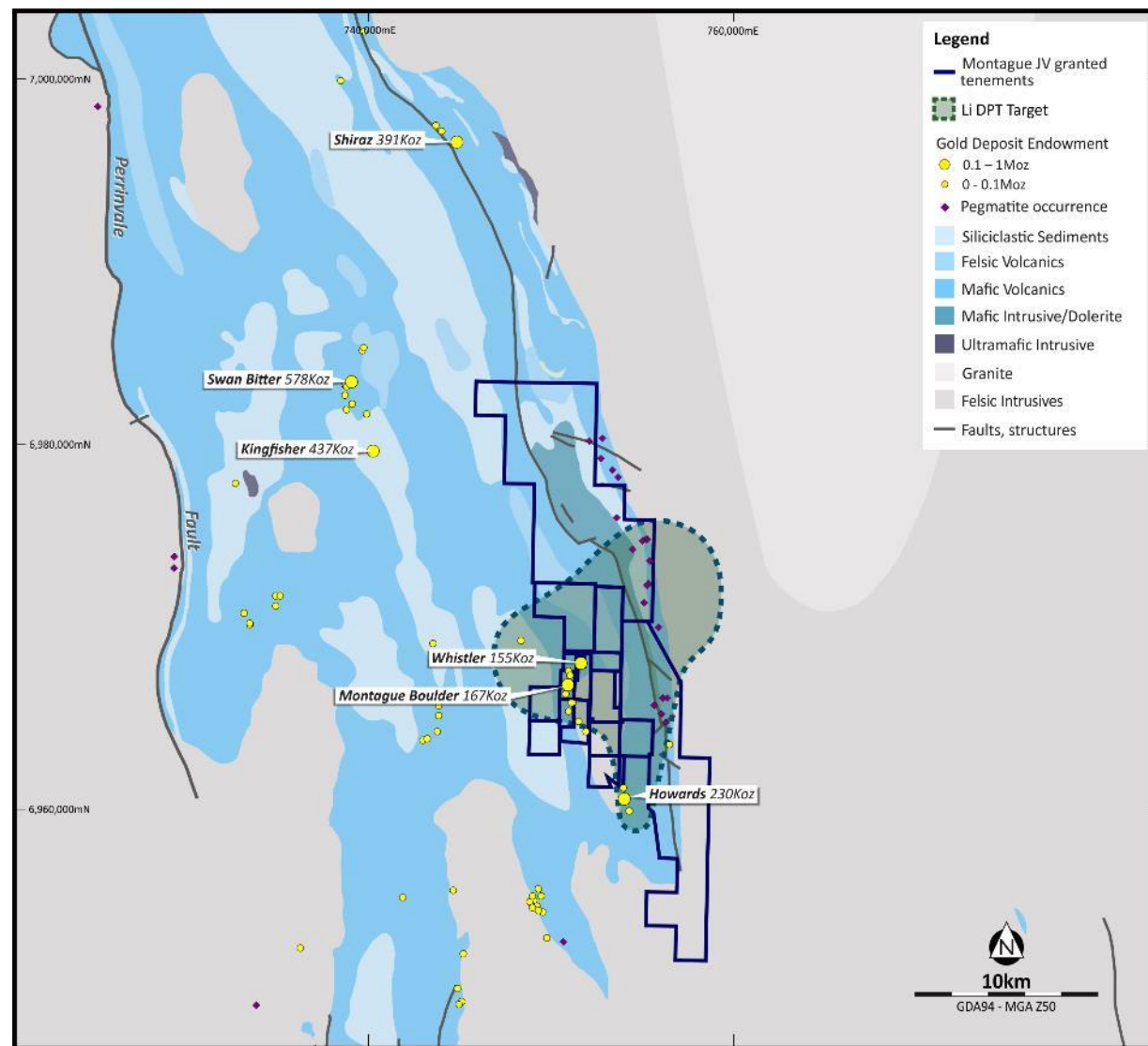


Montague Project

- Large predicted target generated through machine learning
- Previously unrecognised Li potential within greenstone belt, no previous Li exploration
- GSWA and newly mapped pegmatites adjacent to the granite contact
- Contiguous package of historical mining leases
- Land access approvals in place
- PLC earning 80% of Lithium Rights from Gateway Mining
- Initial 2024 fieldwork identify new pegmatite targets

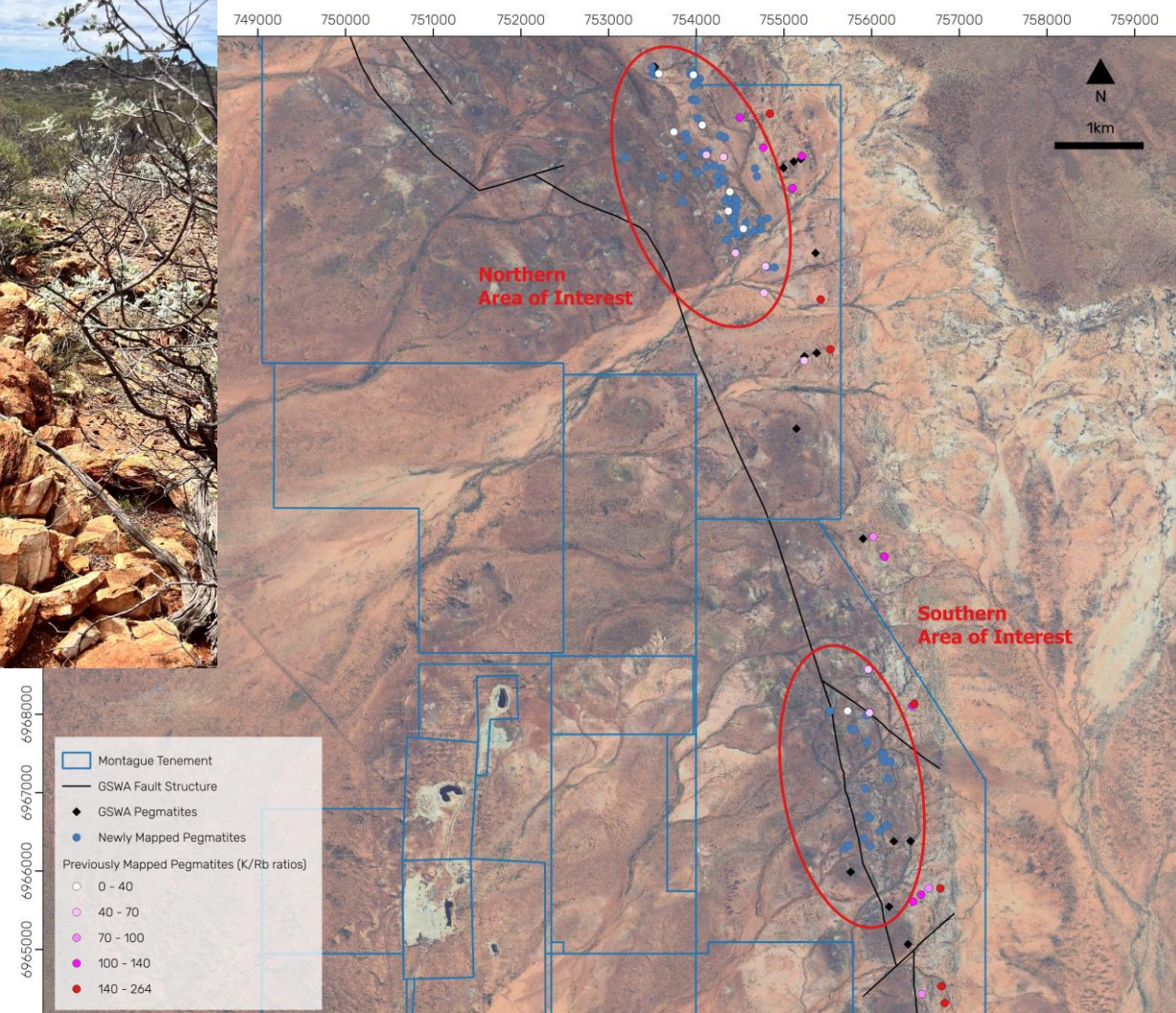
Next steps

- Further pegmatite mapping and sampling to delineate drill targets for H2 2024

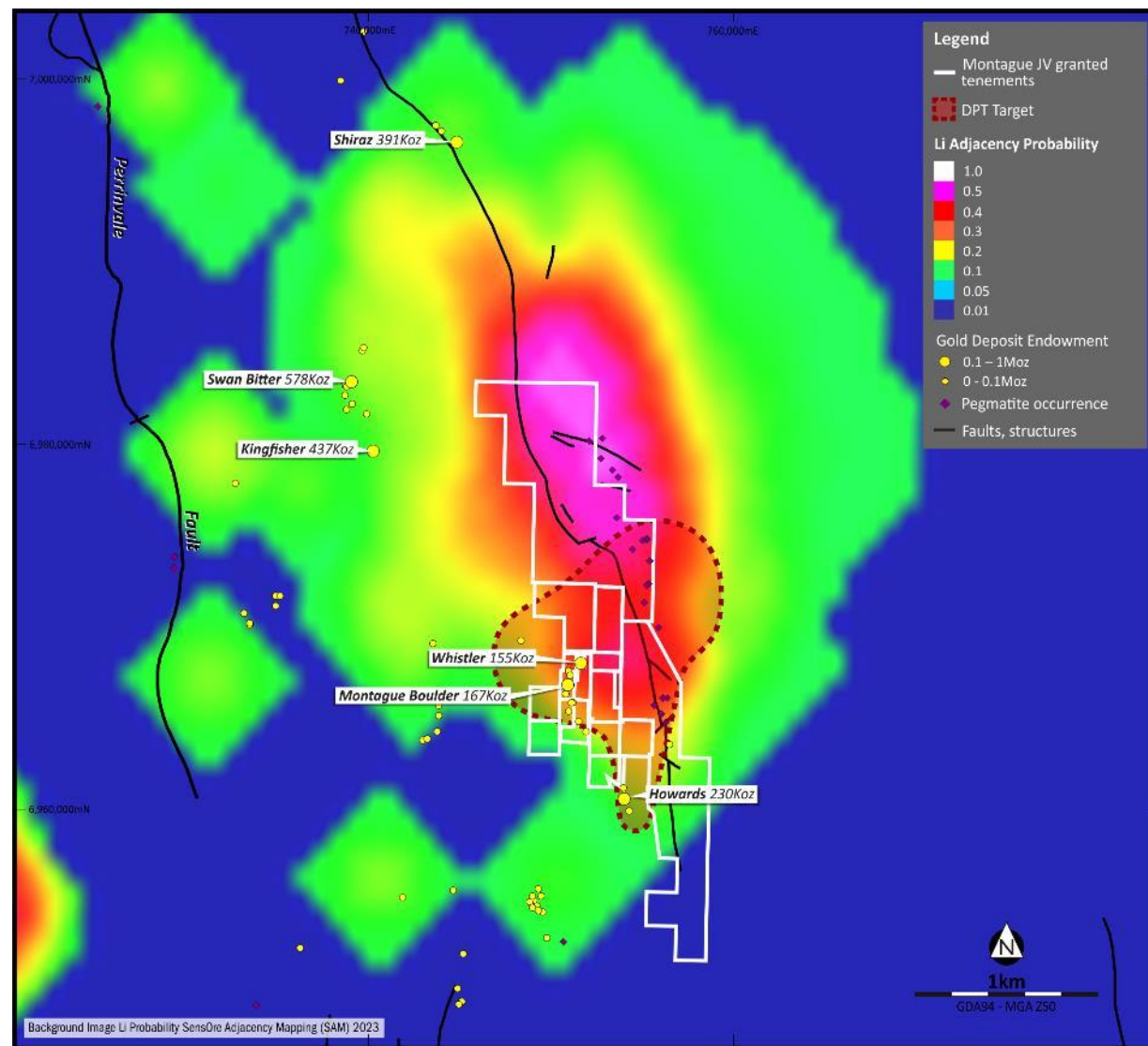
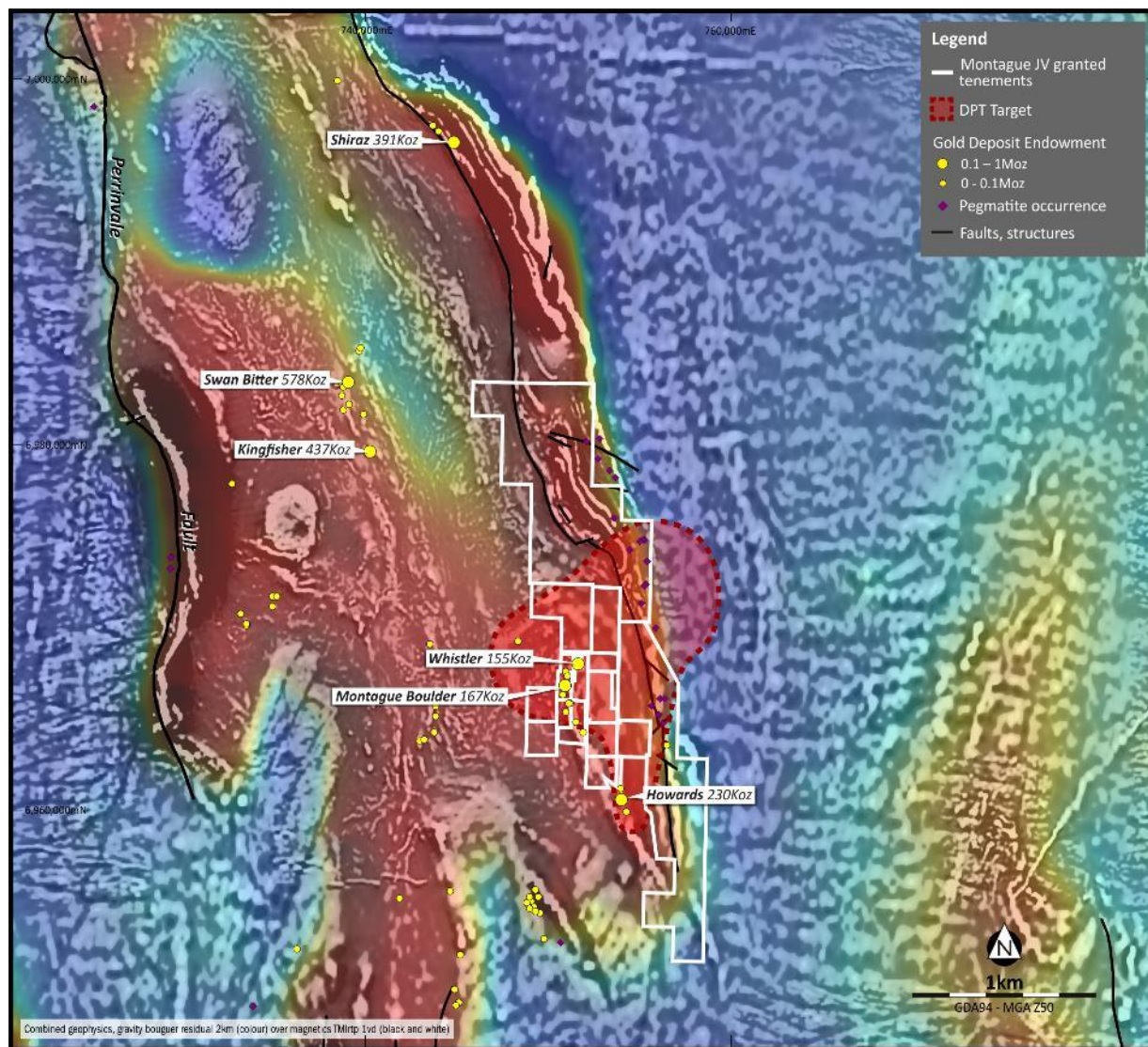


Montague Project

- New fieldwork commenced in March and identified numerous new pegmatites to the west of known GSWA occurrences
- Initial K/Rb ratios of previously mapped pegmatites indicate two areas of interest with high fractionation and prospectivity
- Large tenure requiring extended field mapping and reconnaissance
- Supportive JV partner in Gateway Mining



Montague Project – Large ML Target

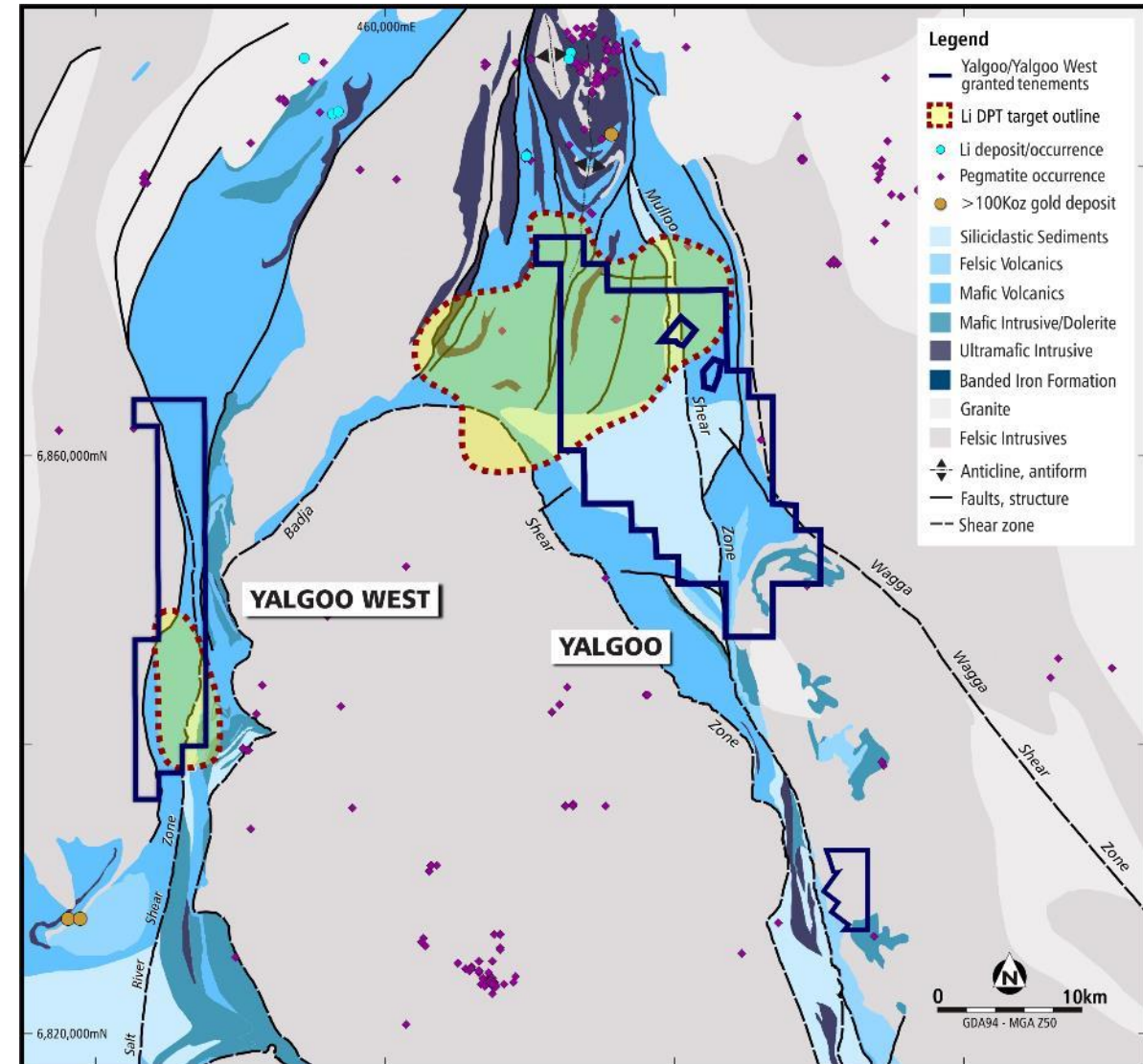


Yalgoo & Yalgoo West Projects

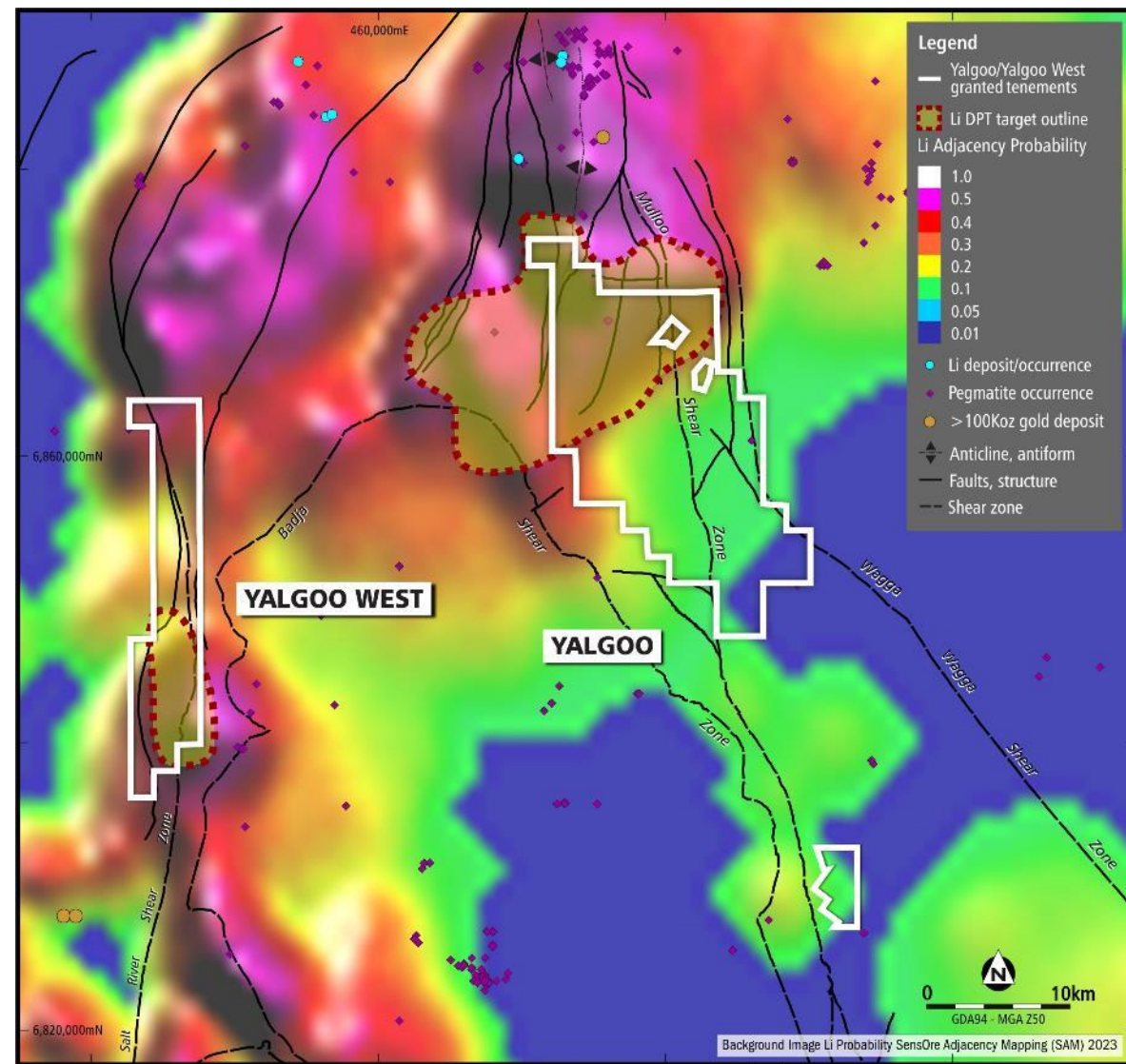
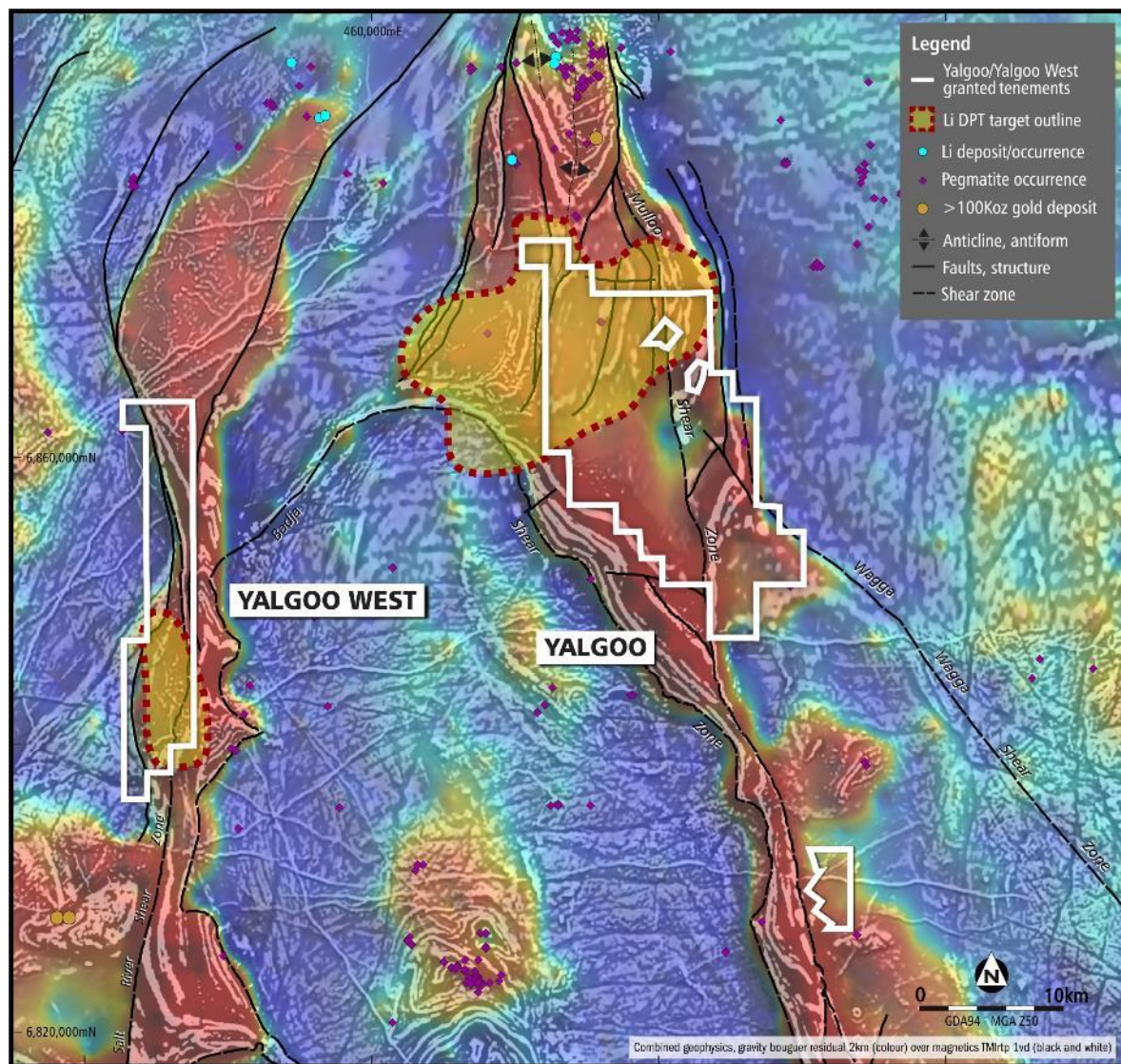
- High Li prospectivity generated through machine learning
- Favourable area adjacent to emerging lithium pegmatite complex
- Significant VMS copper potential in the area
- Land access approvals in place
- PLC earning
 - 70% of All Mineral Rights (except REE) from Venture Minerals
 - 80% of Lithium Rights from Firetail Resources

Next phase

- Extensive fieldwork over ML target including pegmatite mapping and sampling, soil and possible auger geochemistry to delineate drill targets for H2 2024



Yalgoo & Yalgoo West Projects – Large ML Targets



Key Takeaways



- Premier1 Lithium has secured a portfolio of highly prospective lithium rights in the best jurisdiction in the world for hard rock lithium
- Deutsche Rohstoff as key shareholder
- First phase drilling on Abbots North completed with further follow up work and drilling planned for 2024
- Drill target delineation based on field program underway at Montague with significant new pegmatites already being identified
- Extensive fieldwork planned over large ML lithium targets at Yalgoo projects in Q2 2024
- Access to unique lithium prospectivity dataset over WA via SensOre for further lithium project evaluations and review of new M&A opportunities



PREMIER1 Lithium

Level 3, 10 Queen Street, Melbourne VIC 3000, Australia

info@premier1lithium.com.au

+61 3 9492 3843