

28 May 2026

Co-funded Geophysics Grant – Abbotts North Gold Project

HIGHLIGHTS

- Successful application for \$35,888 geophysics cash grant from the WA Government under the Co-funded Geophysics Program (Venture 3, 2026–2027)
- Grant will co-fund a high-resolution airborne magnetic survey over largely underexplored ground at the Company’s Abbotts North Gold Project, Murchison region, Western Australia
- Survey area covers new ground beyond the Rochefort Gold Prospect, where existing WA open-file magnetic data has supported drill targeting – into a largely unexplored portion of the Abbotts Greenstone Belt, where no equivalent magnetic dataset currently exists
- Limited early-stage exploration at Abbotts North has already yielded the high-grade Rochefort Gold Prospect through rock chip and soil sampling alone, highlighting strong potential for additional discoveries across the belt
- High-resolution airborne magnetics will provide a critical new exploration dataset over ground that has seen very limited modern exploration
- Survey’s southern extent has the potential to identify the northward continuation of structures associated with New Murchison Gold’s (ASX:NMG) Crown Prince deposit (2.2 Mt @ 3.9 g/t Au for 279 koz) and high-grade Lydia Prospect – both within the same Abbotts Greenstone Belt¹

PLC Resources Limited (ASX:PLC) (“**PLC**” or “**the Company**”) is pleased to advise that it has secured a \$35,888 West Australian State Government grant to co-fund a high-resolution airborne magnetic geophysical survey at its Abbotts North Gold Project (Figure 1), located approximately 35 km north of Meekatharra in Western Australia’s highly endowed Murchison region. The survey will cover an underexplored portion of the Abbotts Greenstone Belt (Figure 2), where limited modern exploration has been conducted. The results are expected to generate new high-priority exploration targets beyond the recently identified Rochefort Gold Prospect.

The grant was offered following a competitive application process under the WA Government’s Co-funded Geophysics Program for 2026–2027 (Venture 3). The program is administered by the Geological Survey and Resource Strategy Division of the Department of Mines, Petroleum and Exploration (“**DMPE**”) to stimulate exploration leading to new discoveries.

¹ New Murchison Gold Limited ASX Announcement “Crown Prince Mineral Resource Update” - 28 November 2024

Applications are assessed by an expert panel and moderated by independent industry representatives. The program preferentially funds high-quality, technically and economically sound proposals that promote new exploration concepts and technologies.

The grant is specific to the Company’s Abbots North Gold Project and underscores the discovery potential of the Project area.

PLC acknowledges the Western Australian Government and specifically DMPE, for its continued investment and support of mineral exploration throughout the State.

Executive Director Simon Phillips commented:

"This program targets a substantial portion of our exploration footprint at Abbots North. Rochefort has shown the kind of high-grade potential this belt can deliver from limited surface sampling alone – now we will have the dataset to systematically hunt for the next high-priority target across ground that has barely been touched by modern exploration."

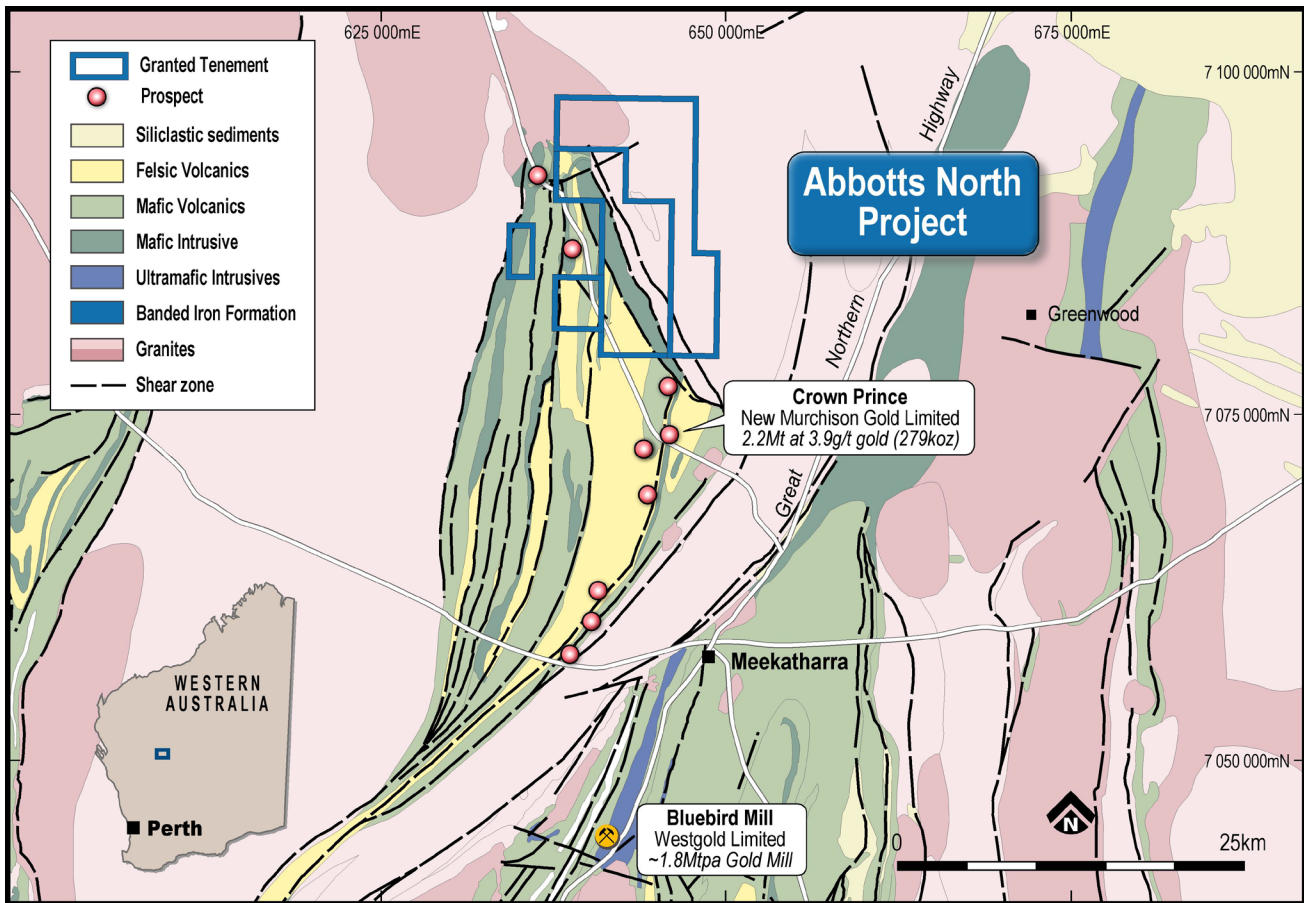


Figure 1: Abbots North Gold Project location and regional geology

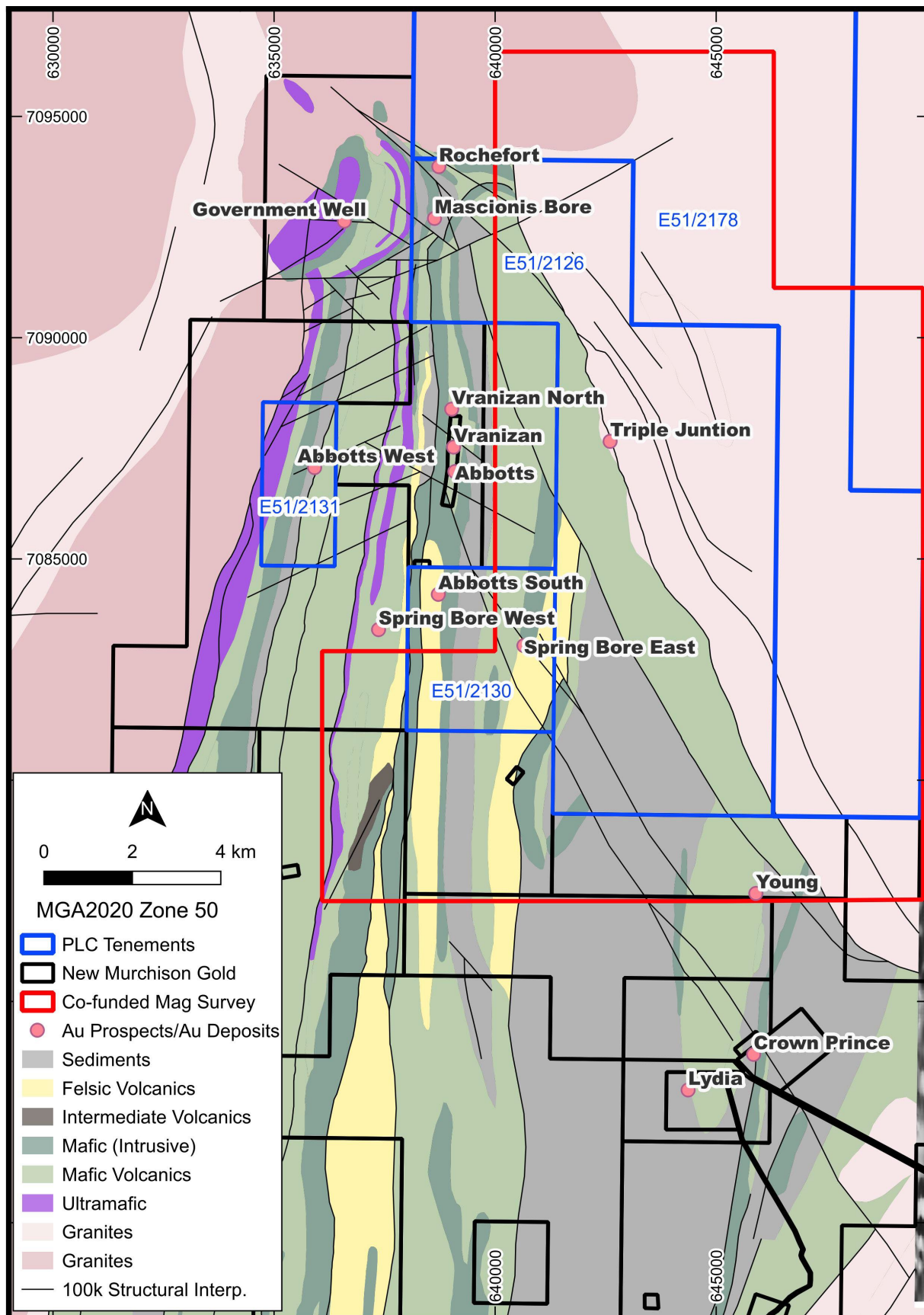


Figure 2: Co-funded airborne Magnetic survey area

Abbotts North Gold Project

The Abbotts North Gold Project sits within the Abbotts Greenstone Belt in Western Australia's Murchison region – a belt with a history of high-grade gold production and immediate proximity to the recently producing Crown Prince deposit. Despite these credentials, much of the Project area remains largely untested by modern exploration, presenting a compelling opportunity that PLC is now actively pursuing.

PLC's early-stage exploration – comprising geological mapping, rock chip sampling and soil sampling – has already demonstrated the belt's potential through the identification of the Rochefort Gold Prospect. Rock chip sampling returned high-grade results of up to 11.7 g/t Au from north-south trending quartz-hematite veins, and follow-up soil sampling defined a coherent ~400m × 350m gold-in-soil anomaly with peak values of up to 30 ppb Au. UltraFine™ surveying extended the anomaly beneath shallow cover (peak 42.9 ppb Au)², and a ground gravity survey completed in March 2026 confirmed a structurally favourable setting³. At Rochefort, existing high-resolution magnetic data available from WA open-file records was sufficient to support drill target refinement, and led to the recently completed maiden RC program of 5 x holes (1,018 metres)⁴.

The Co-funded Geophysics Program survey will be flown over ground within the Project area where no equivalent magnetic dataset exists. This largely unexplored portion of the Abbotts Greenstone Belt has seen very little modern exploration, and the new high-resolution airborne magnetics survey will provide the foundational dataset needed to identify structural and lithological targets for follow-up ground activity. The Company considers the discovery of Rochefort through limited surface sampling to be a strong indicator of the prospectivity of the broader belt, and anticipates the survey will unlock significant new exploration opportunities.

² PLC ASX Announcement "Abbotts North Sampling Results Highlight Further Potential" - 2 July 2025

³ PLC ASX Announcement "High-Resolution Gravity Survey Confirms Compelling Drill Targets at Rochefort Gold Prospect, Abbotts North Project" - 26 March 2026

⁴ PLC ASX Announcement "PLC Completes RC Drilling at Rochefort Gold Prospect" – 26 May 2026

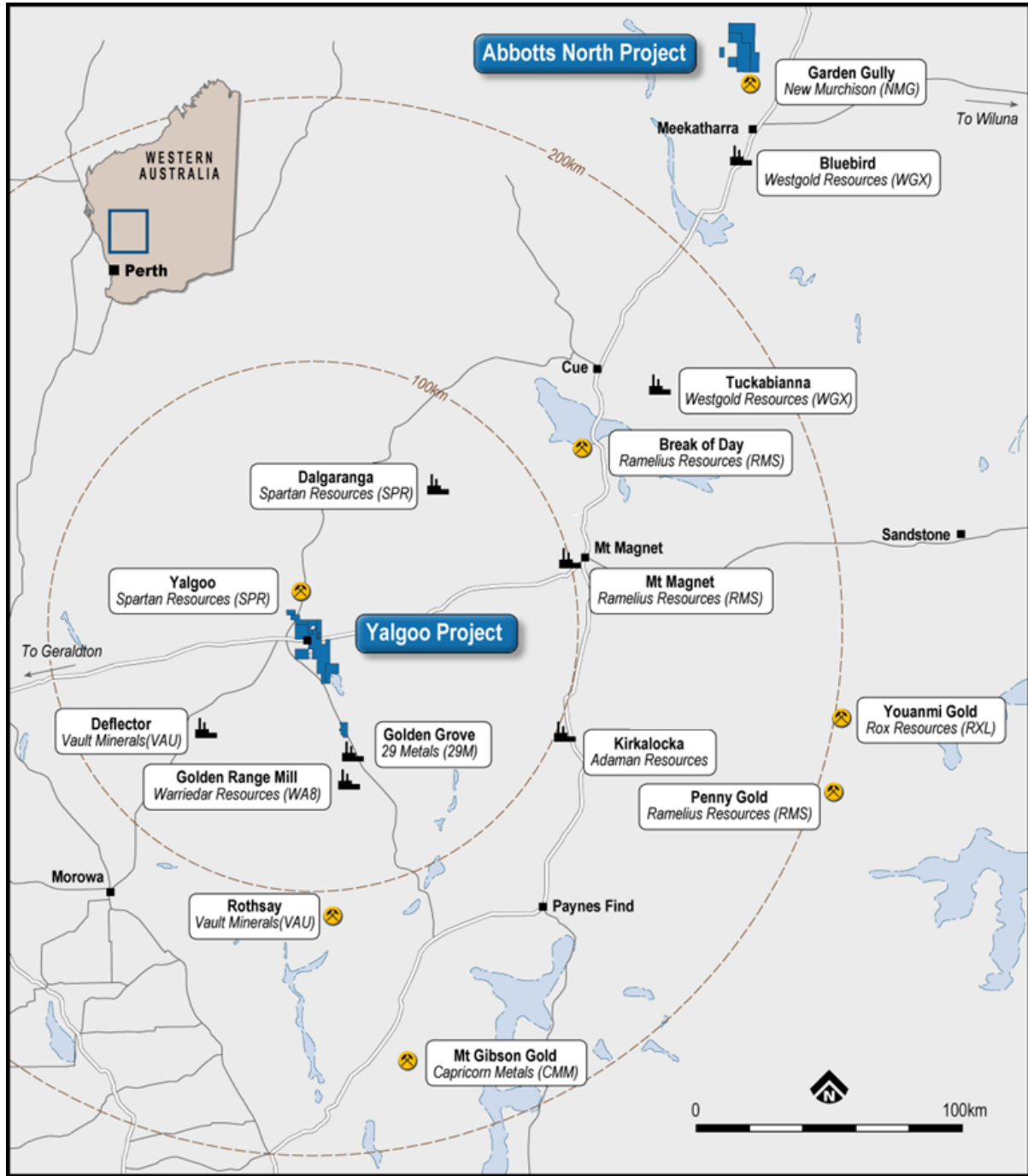


Figure 3: Regional context of the Abbotts North Gold Project within the Murchison goldfield

END

This release was approved by the Board of PLC Resources Ltd.

Enquiries

Simon Phillips
 Executive Director
 enquiries@plcresources.au

About PLC Resources

PLC Resources Limited (ASX: PLC) is a Western Australian mineral exploration company dedicated to discovering and advancing high-value gold and copper assets in world-class geological settings. Formerly known as Premier1 Lithium Limited, the Company has refocused its exploration strategy on its two flagship projects: the Yalgoo Gold Project, covering over 220 km² in the highly prospective Yalgoo-Singleton Greenstone Belt, a district hosting base and precious metals mines including Golden Grove and Deflector, and the Abbotts North Project in the Murchison region of Western Australia, approximately 35 kilometres north of Meekatharra. PLC Resources is guided by rigorous project evaluation, disciplined capital allocation, and a commitment to delivering value for shareholders through high-impact exploration.

COMPETENT PERSON'S STATEMENT

The information in this announcement that relates to Exploration Results is based on information compiled by Paul Smith, a Competent Person who is a Member of the Australian Institute of Geoscientists (AIG). Mr Smith is a full-time employee and the Exploration Manager of PLC Resources Limited. Mr Smith has sufficient experience that is relevant to the style of mineralisation and type of deposit under consideration and to the activity being undertaken to qualify as a Competent Person as defined in the 2012 Edition of the Australasian Code for Reporting of Exploration Results, Mineral Resources and Ore Reserves. Mr Smith consents to the inclusion in this announcement of the matters based on his information in the form and context in which it appears.

PROXIMATE STATEMENT

Where this release contains references to mineral exploration results derived by other parties either nearby or proximate to the Abbotts North Project and includes references to topographical or geological similarities to that of the Abbotts North Project. It is important to note that such discoveries or geological similarities do not in any way guarantee that the Company will have similar exploration successes on the Abbotts North Project, if at all.