



# Poseidon Rising

China Nickel Conference  
May 2011

David Singleton  
Managing Director & CEO

**POSEIDON**NICKEL

# Disclaimer

POSEIDON NICKEL

This presentation has been prepared for the purpose of providing general information about Poseidon Nickel Limited ("Poseidon"). It should not be considered as an offer or invitation to subscribe for or purchase any securities in Poseidon or as an inducement to make an offer or invitation with respect to those securities. It is not recommended that any person makes an investment decision in relation to Poseidon in reliance on this presentation material.

This presentation contains forecasts and forward looking statements. Such statements are predictions only based on available data which maybe unreliable and is subject to inherent risks and uncertainties which could cause actual values, results, performances or achievements to differ materially from those expressed, implied or projected in this presentation.

This overview does not purport to be all-inclusive or to contain all information which its recipients may require in order to make an informed assessment of the projects prospects. Each of Poseidon, its officers, employees and advisers expressly disclaims any responsibility for the accuracy or completeness of the material contained in this presentation and excludes all liability for any loss or damage which may be suffered by any person as a consequence of any information in this presentation or any error or omission there from. Poseidon accepts no responsibility to update any person regarding any inaccuracy, omission or change in information in this presentation.

# Poseidon Rising

POSEIDON NICKEL

- Biggest Nickel Sulphide Resource of any Australian Explorer
- 2 existing mines, 1 high grade discovery, 7 significant anomalies
- Fully funded up to committing the concentrator late 2011

# Mt Windarra Mine Site

Main Portal  
Entrance

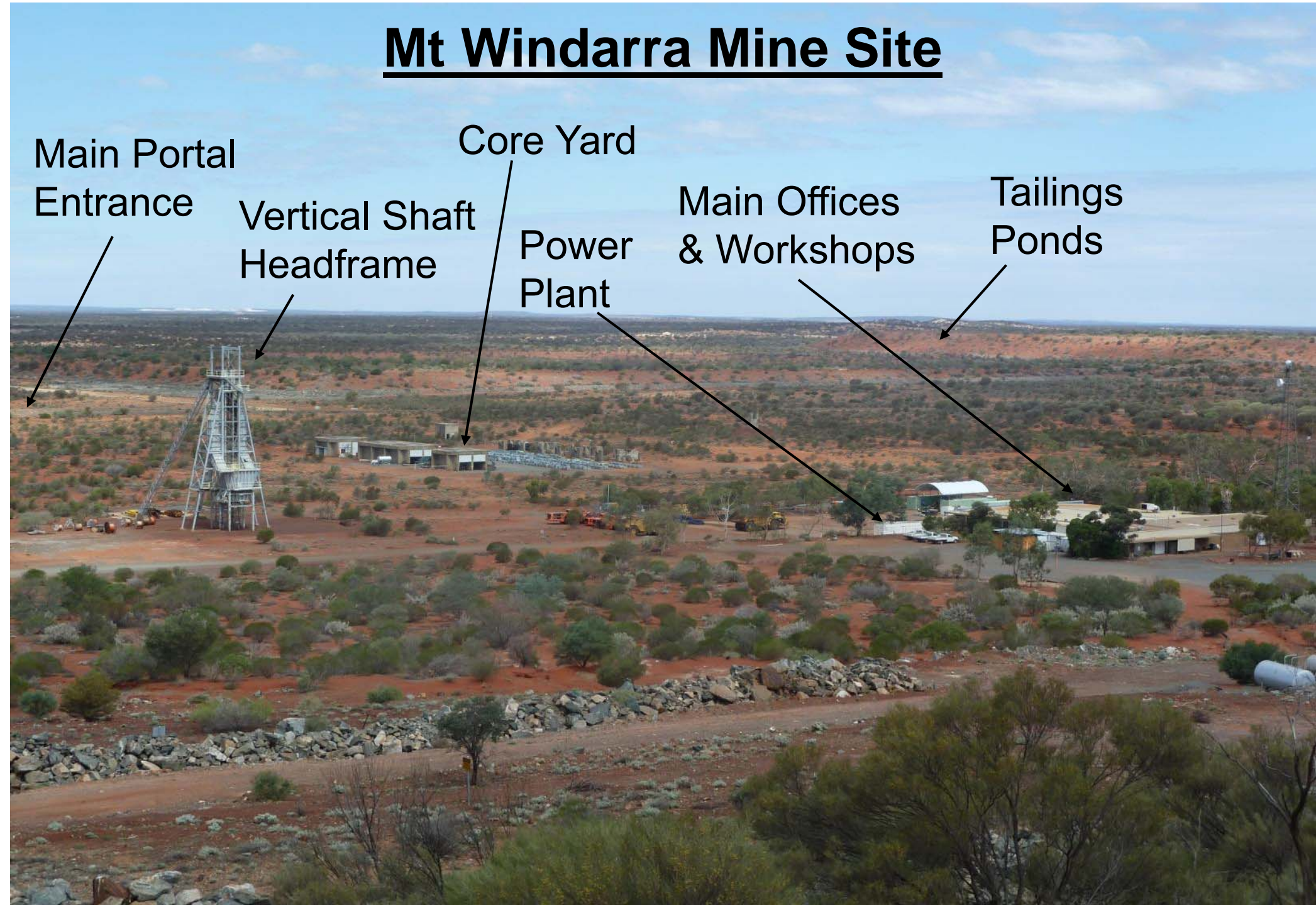
Vertical Shaft  
Headframe

Core Yard

Power  
Plant

Main Offices  
& Workshops

Tailings  
Ponds





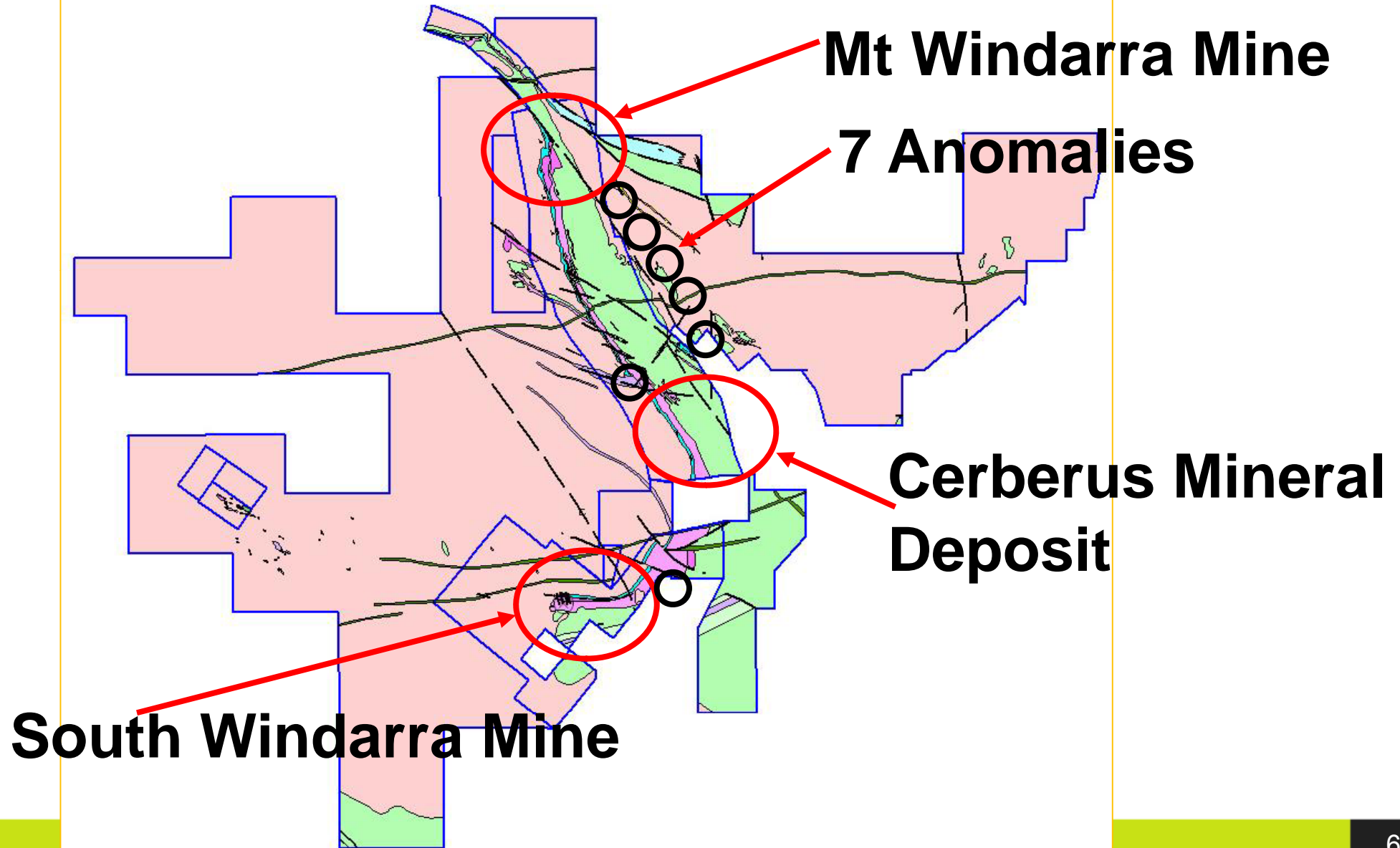
# The “Central Business District” for Mining

POSEIDON NICKEL



# 2 Existing Mines, 1 High Grade Discovery & 7 Anomalies

POSEIDON NICKEL



# Key Points

POSEIDON NICKEL

1. 7 year initial resource at Mt Windarra
2. First concentrate late 2012
3. Cash cost US\$3.20\*/lb average
4. China Non Ferrous (NFC) to build and fund concentrator\*\*
5. Cerberus drilling targeted at 2013 opening

\*10 year average \*\*For details see relevant announcement

Over 4 years we have built Australia's  
premier nickel sulphide explorer

POSEIDON NICKEL

## **RESOURCE 2007**

|                |         |
|----------------|---------|
| Mt Windarra    | NIL     |
| Cerberus       | Unknown |
| South Windarra | NIL     |

## **RESOURCE 2010**

62,200 Ni @ 1.61%  
25,000 Ni @ 2.45%  
10,300 Ni @ 1.14%



# Ready To Go with \$50m of built infrastructure

POSEIDON NICKEL





# Mt Windarra - Vertical Ore Shaft Headframe





# Mt Windarra - Power Plant Expansion





# Tailings Ponds and Airstrip

ML 261SA

E38/1450



Process  
Water  
Dam  
Plant  
ROM  
Pad

Existing Area  
of Disturbance



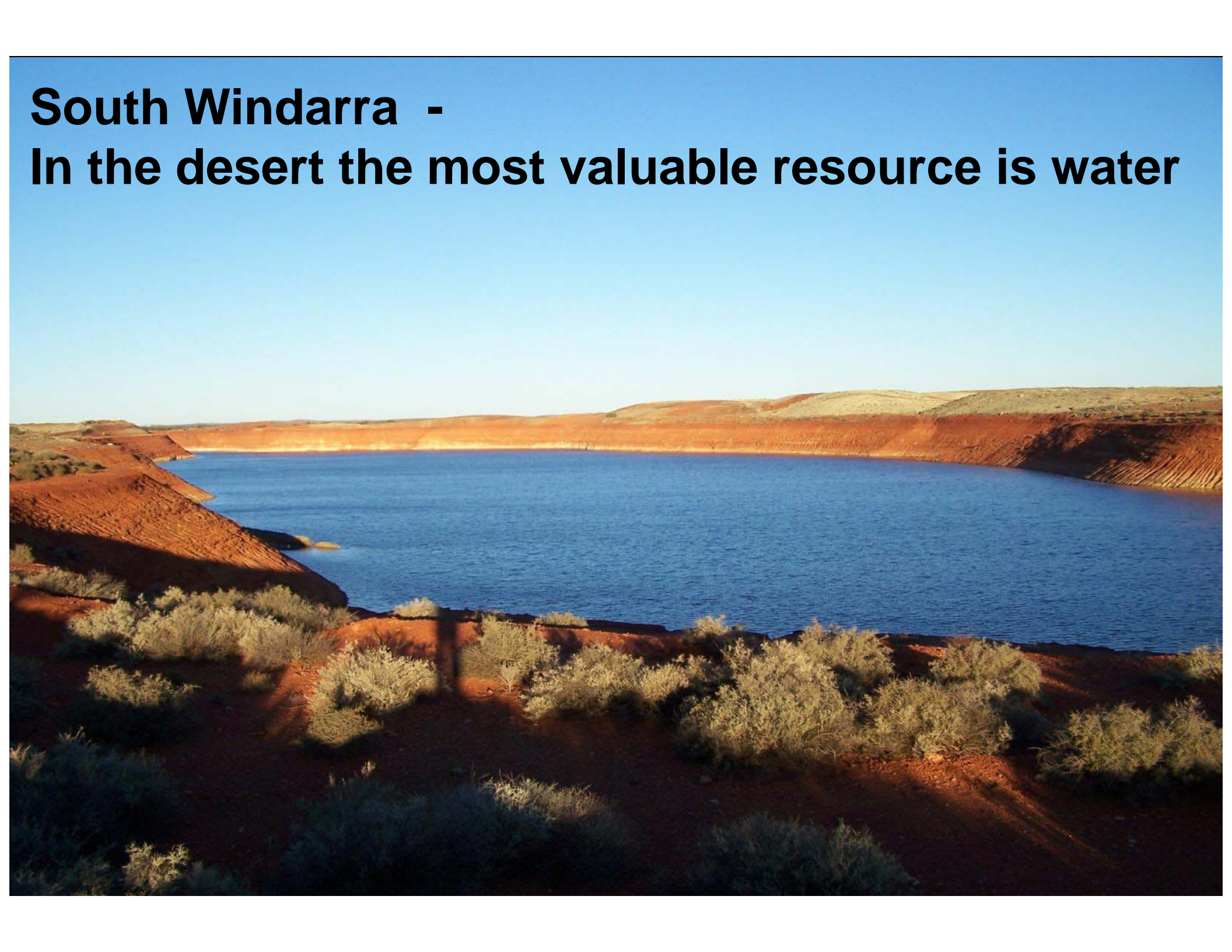
## LEGEND

- Processing Plant
- TSF Lift
- Existing Area of Disturbance
- Mining Lease Boundaries
- Roads**
- Access Road
- Unsealed Road



**South Windarra -**

**In the desert the most valuable resource is water**





# The final refurbishment of the underground prior to restarting mining is underway

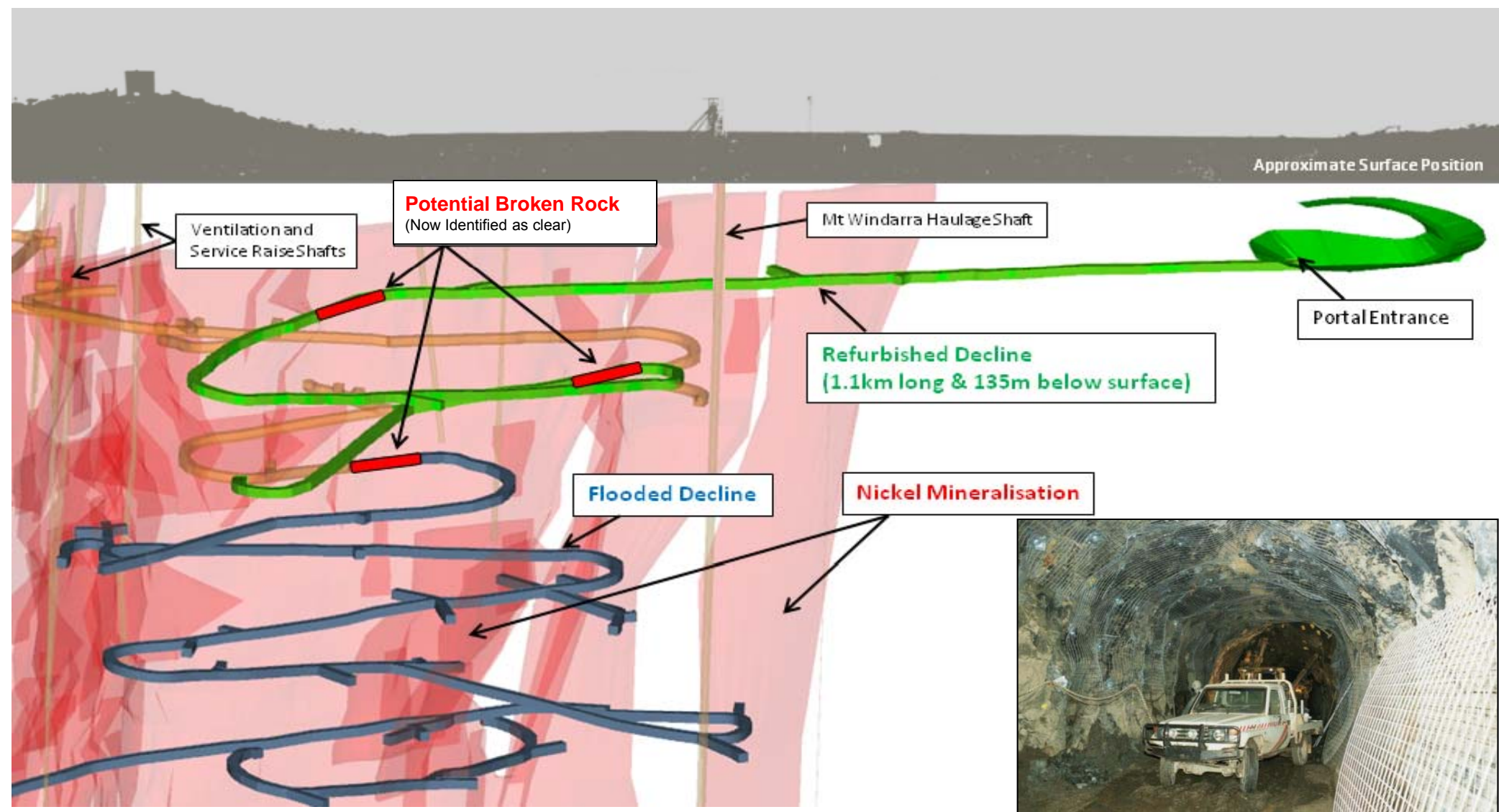
POSEIDON NICKEL

- Mining & refurbishment equipment on site and in operation
- Decline over 20% complete
- Refurbishment will complete in 2011



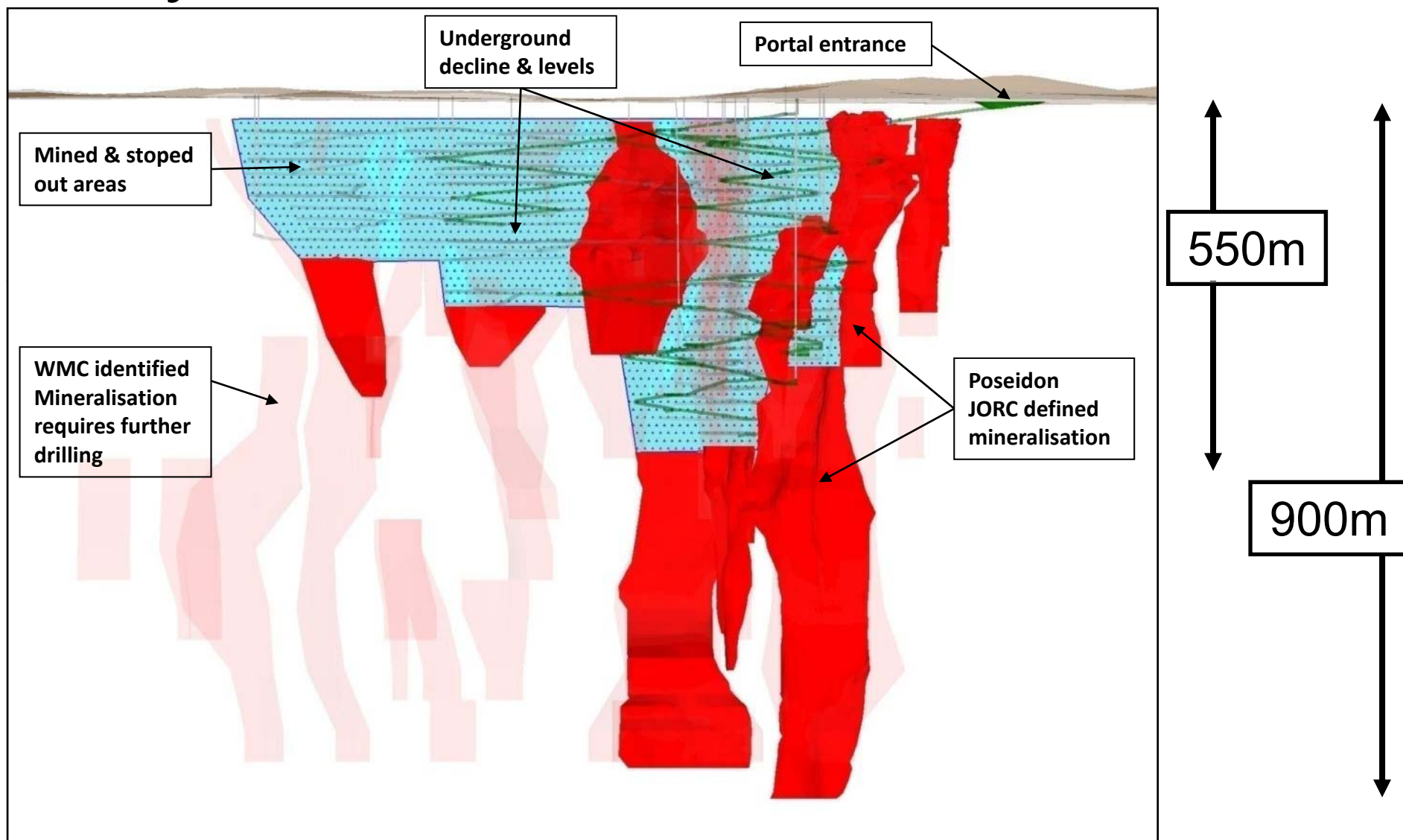
# Refurbishment to Date Shows Viability

POSEIDON NICKEL



# Mt Windarra mined to 550m with ore body continuity to at least 900m

POSEIDON NICKEL





New Build Concentrator will cost circa \$35m

POSEIDON NICKEL



# New Build Concentrator will cost circa US\$35m

POSEIDON NICKEL

- Initial stage 350,000 tonnes expandable to  $\approx$  700,000 tonnes
- Plant low risk & well understood
- MOU signed with China Non Ferrous & Arccon (Australia) to:
  - Provide fixed price turnkey concentrator plant
  - Vendor finance package for approx 80% of cost over 8 years
  - Expect binding agreement 3<sup>rd</sup> quarter 2011





# Windarra Geology

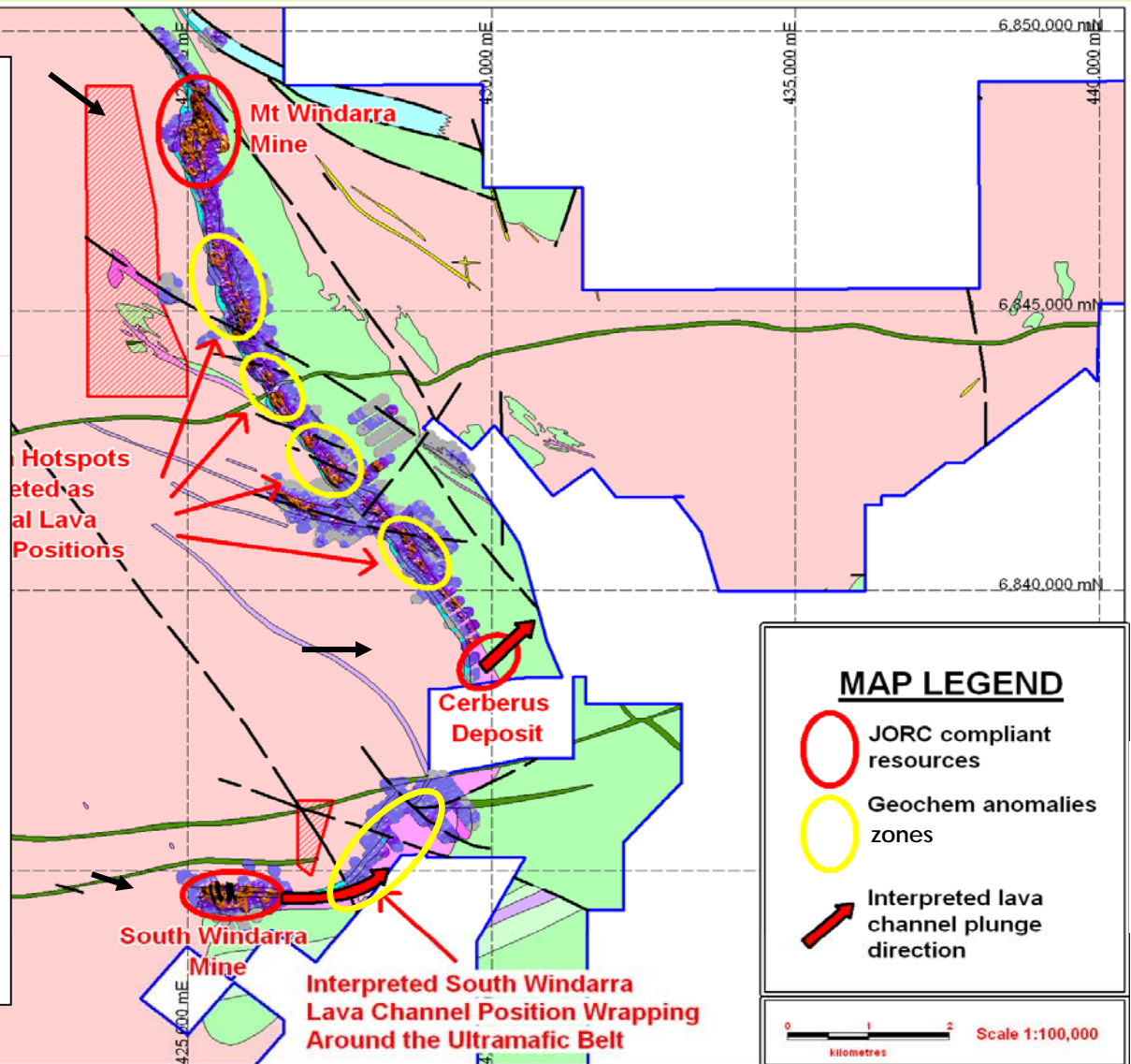
Private & Confidential

**POSEIDON**NICKEL

# Low Resource Risk

POSEIDON NICKEL

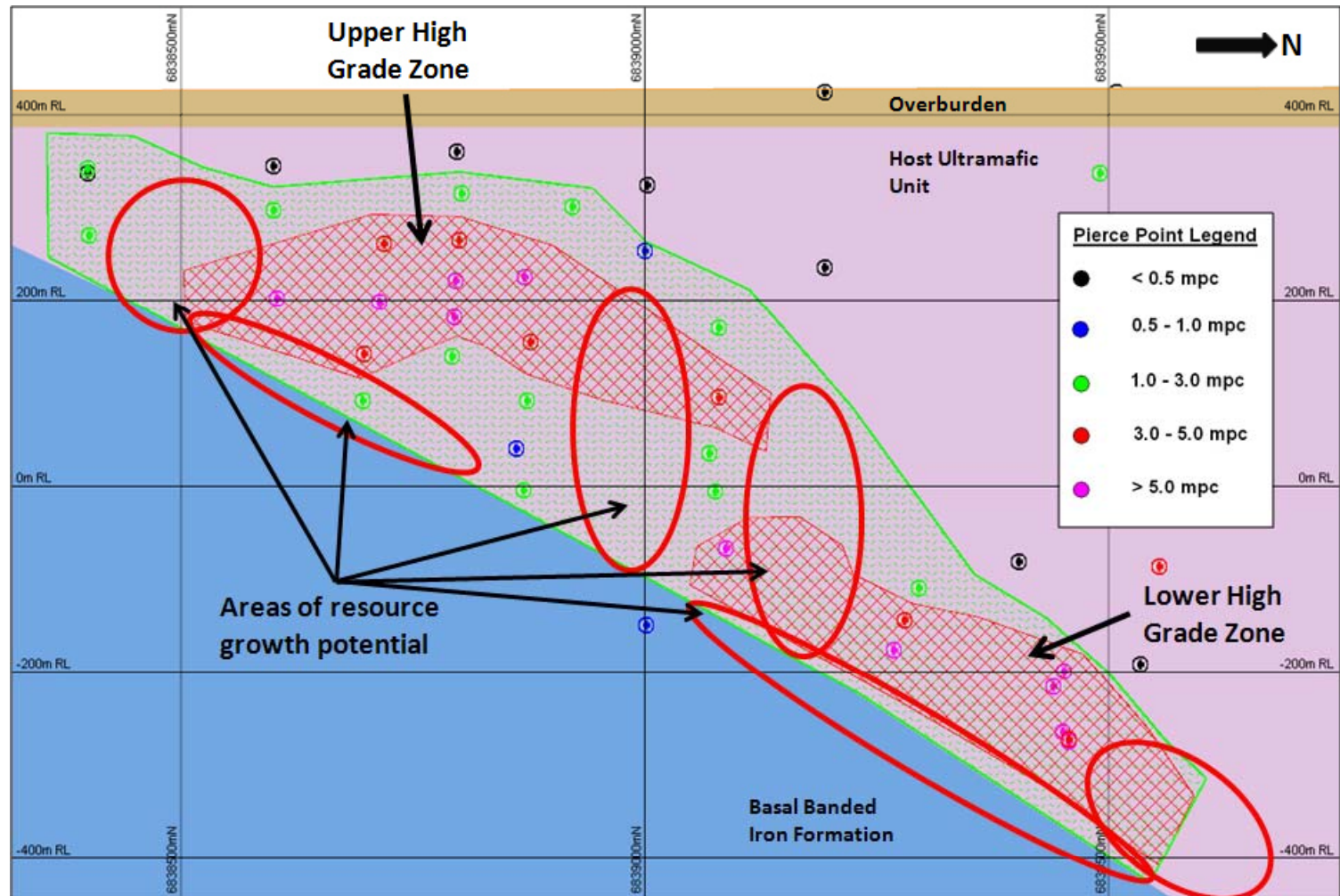
- 24km strike length
- 2 long life mines at northern & southern ends
- 100,000 tonne Nickel Resource
- New high grade discovery at Cerberus
- 7 anomalous lava channels recently discovered



# Cerberus is the first discovery on the site by Poseidon

POSEIDON NICKEL

- Open in 3 directions
- 2 higher grade pods exist
- Grade increases with depth
- Additional drilling is underway





**Now drilling 20,000 metres at  
Cerberus during next 6 months**





# Project Economics

Private & Confidential

**POSEIDON**NICKEL



# Harbinger US\$20m funding – Best in market

POSEIDON NICKEL

- New US\$20m convertible at 30c/share
- Premium of 42% to share price (at time)
- 6 year term
- 3 years @ 0% + 3 years @ 5%
- Unsecured

# Work Required to Progress Mt Windarra\*

POSEIDON NICKEL



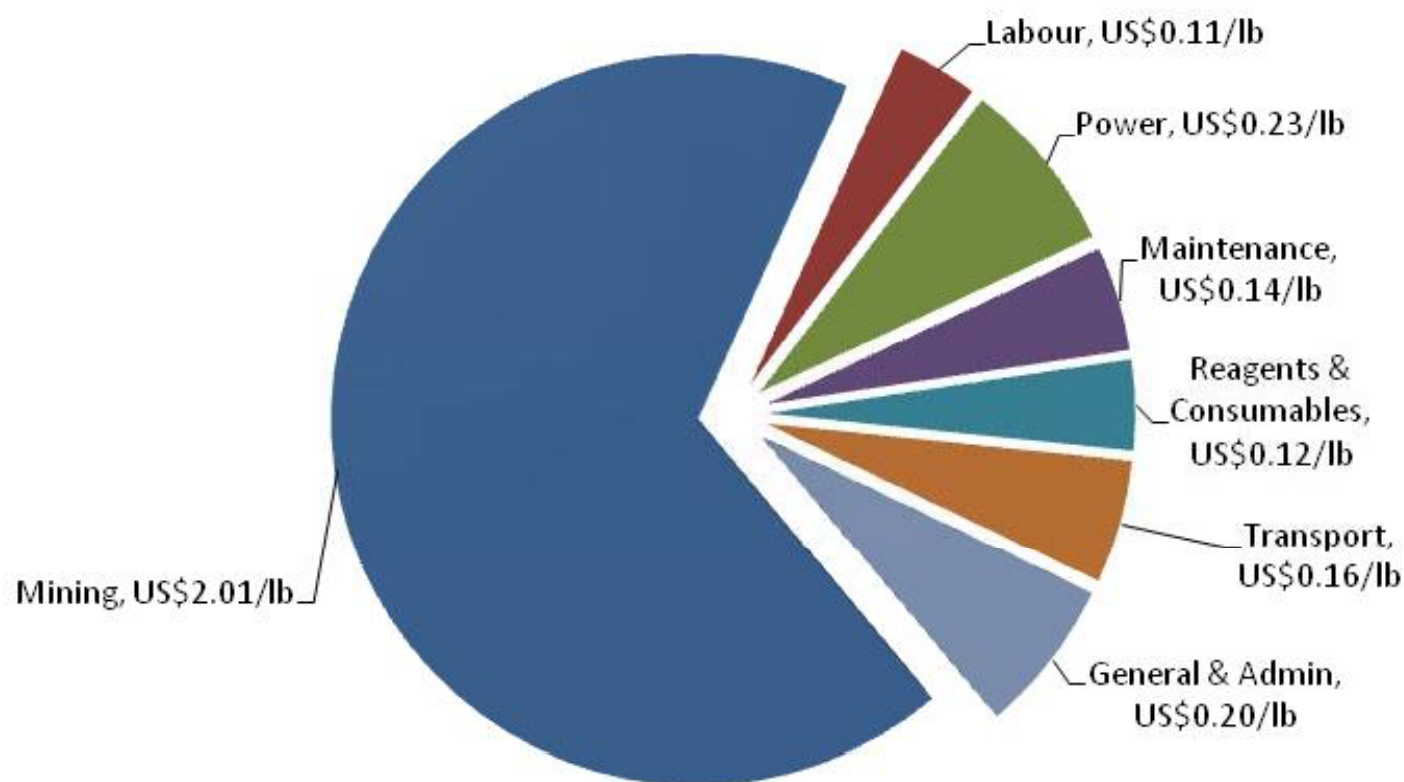
|   | <u>Cost</u><br><u>US\$m</u> | <u>Time</u><br><u>(months)</u> |
|---|-----------------------------|--------------------------------|
| ▪ Complete de-water & refurbishment of Mt Windarra nickel mine                      | 8                           | 10                             |
| ▪ Drill Mt Windarra, Cerberus and South Windarra to increase resources and reserves | 7                           | 12                             |
| ▪ Construct facility concentrator   | 35                          | 12-18                          |
| ▪ Restart working capital & other costs   | 5                           | 6                              |
| <b><u>TOTAL</u></b>   | <b>55m</b>                  | <b>18-24</b>                   |

\*Phase 1 only

# Low Cash Cost Producer – US\$3.20/lb

POSEIDON NICKEL

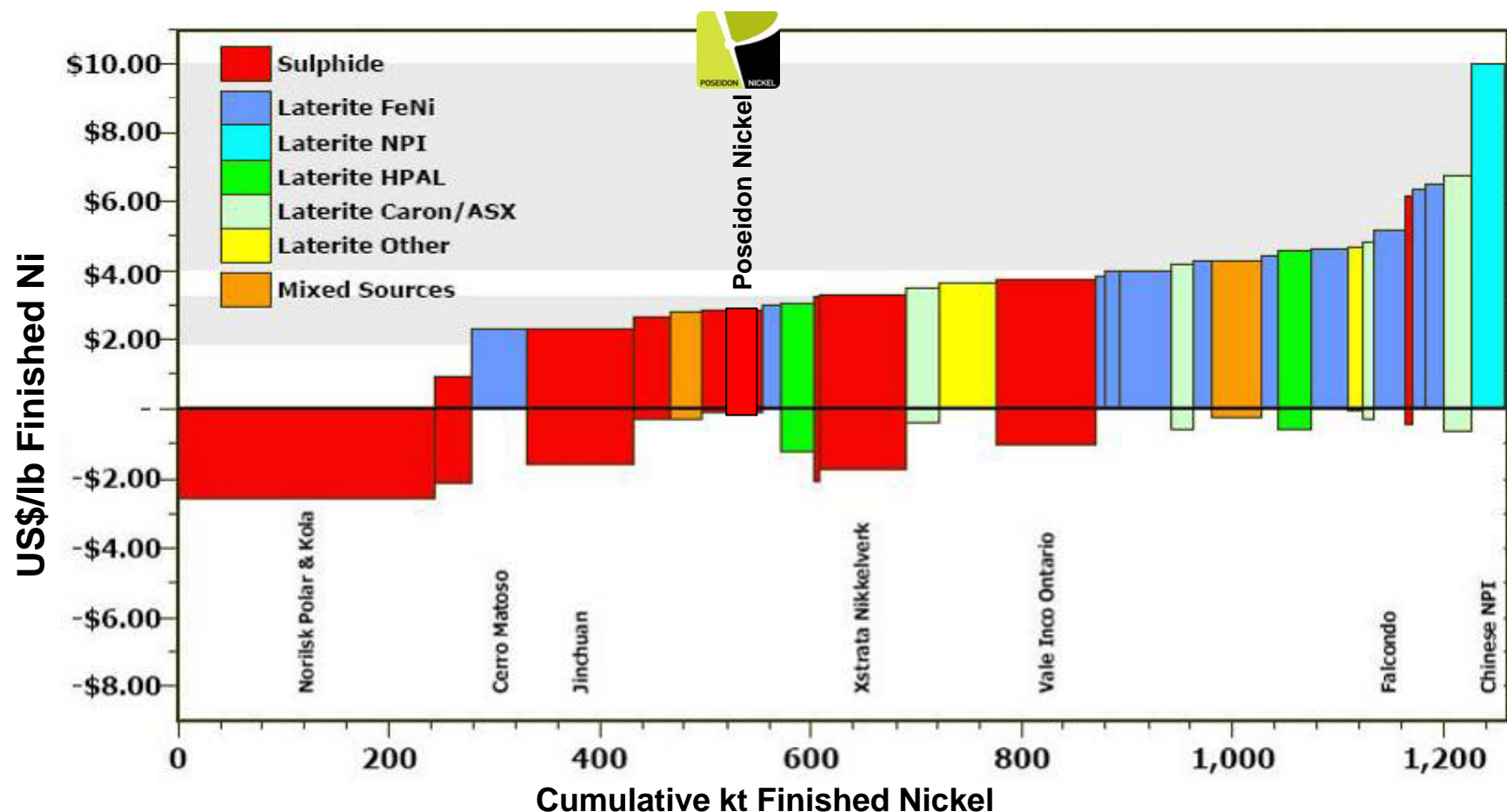
**Opex (C1) Costs – US\$3.20/lb**  
(before Cobalt credits)



*\*based on full output. See assumptions book not in presentation  
Poseidon cash cost is average over life of project*

# Low Cash Cost Producer – US\$3.20/lb

POSEIDON NICKEL



Metalytics cost data

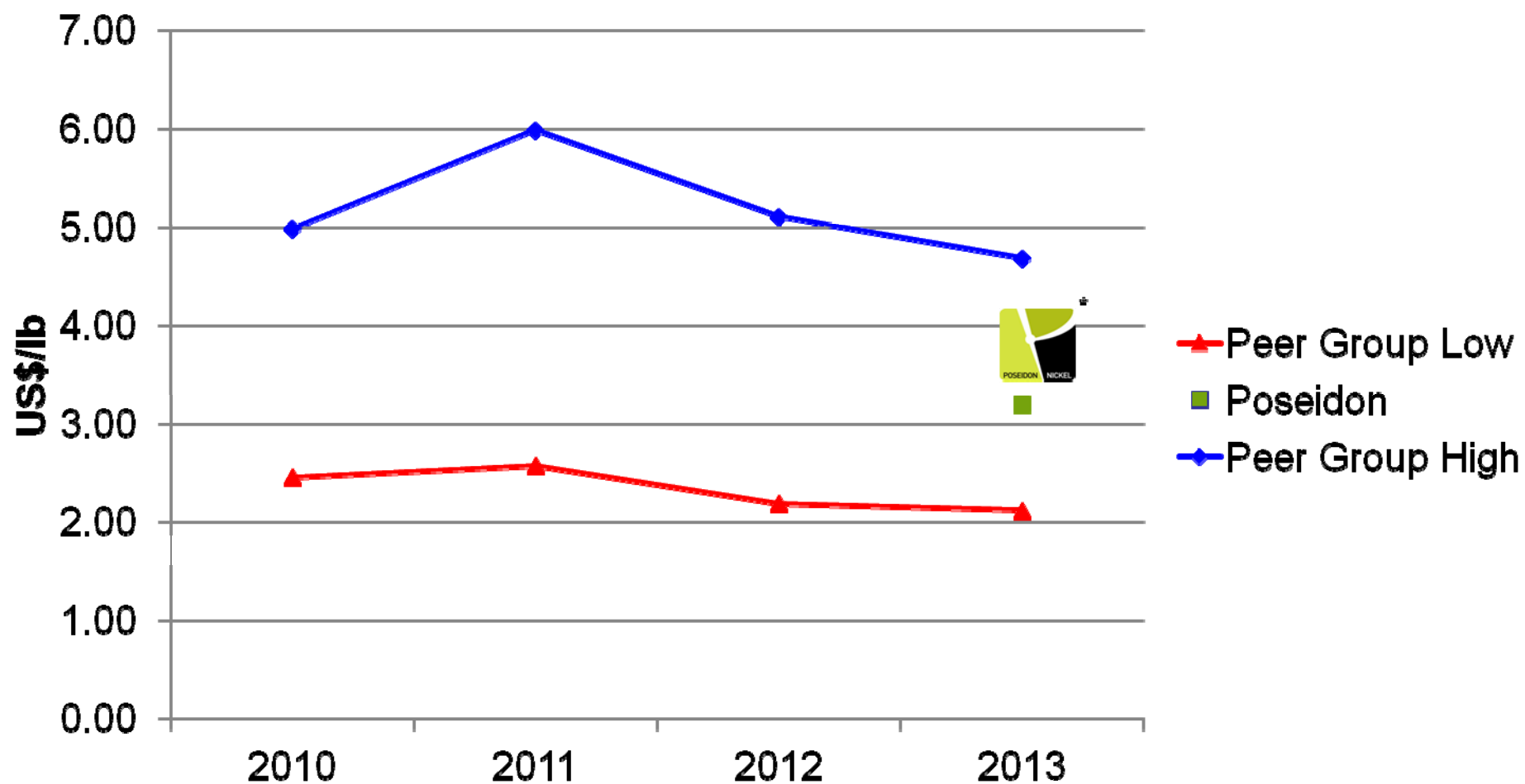
\*based on full output. See assumptions book not in presentation

Poseidon cash cost is average over life of project

# Poseidon's Operating Cost relates well to its Australian Peer Group

POSEIDON NICKEL

C1 Operating Cost US\$/lb Nickel



\*Poseidon average C1 over 10 years

Data Source: RBC Capital Markets February 2011



# Summary

POSEIDON NICKEL

- 100,000 tonne Nickel Resource
- 5,000 tonne Nickel initial output target (Phase 1) – late 2012
- Plan to double output using Cerberus (Phase 2)
- US\$20m capital raising complete
- China Non Ferrous to build concentrator
- Offtake offers underway

# Windarra Nickel Project Resource Statement

POSEIDON NICKEL

| Windarra Nickel Project Sulphides | Cut Off Grade | Resource Category |             |               |                  |             |               |                  |             |               |
|-----------------------------------|---------------|-------------------|-------------|---------------|------------------|-------------|---------------|------------------|-------------|---------------|
|                                   |               | Indicated         |             |               | Inferred         |             |               | TOTAL            |             |               |
|                                   |               | Tonnes            | Ni% Grade   | Ni Metal t    | Tonnes           | Ni% Grade   | Ni Metal t    | Tonnes           | Ni% Grade   | Ni Metal t    |
| <b>Mt Windarra</b>                | 0.75%         | 910,000           | 1.24        | 11,300        | 2,955,000        | 1.72        | 50,900        | 3,865,000        | 1.61        | 62,200        |
| <b>South Windarra</b>             | 0.90%         | 820,326           | 1.15        | 9,434         | 82,404           | 1.05        | 864           | 902,730          | 1.14        | 10,298        |
| <b>Cerberus</b>                   | 1.50%         |                   |             |               | 1,033,328        | 2.45        | 25,269        | 1,033,328        | 2.45        | 25,269        |
| <b>Total Sulphide</b>             |               | <b>1,730,326</b>  | <b>1.20</b> | <b>20,734</b> | <b>4,070,732</b> | <b>1.89</b> | <b>77,033</b> | <b>5,801,058</b> | <b>1.69</b> | <b>97,767</b> |

*Note: The information in this report relates to Exploration Results and Mineral Resources based on information compiled by Mr N Hutchison who is a Member of The Australian Institute of Geoscientists and Mr I Glacken who is a Fellow of the Australasian Institute of Mining and Metallurgy as well as a full time employee of Optiro Pty Ltd. Mr Hutchison and Mr Glacken both have sufficient experience which is relevant to the style of mineralisation and type of deposits under consideration and to the activity which they are undertaking to qualify as a Competent Person as defined in the 2004 Edition of the 'Australasian Code for Reporting of Exploration Results, Mineral Resources and Ore Reserves.' Mr Hutchison and Mr Glacken have consented to the inclusion in the report of the matters based on his information in the form and context in which it appears.*

*The Australian Securities Exchange has not received and does not accept responsibility for the accuracy or adequacy of this release.*



# Poseidon Rising

China Nickel Conference  
May 2011

David Singleton  
Managing Director & CEO

**POSEIDON**NICKEL