



Australia's 'New' Nickel

Australian Nickel Conference

David Singleton
Managing Director & CEO

October 2012

POSEIDONNICKEL

Disclaimer

POSEIDON NICKEL

This presentation has been prepared for the purpose of providing general information about Poseidon Nickel Limited ("Poseidon"). It should not be considered as an offer or invitation to subscribe for or purchase any securities in Poseidon or as an inducement to make an offer or invitation with respect to those securities. It is not recommended that any person makes an investment decision in relation to Poseidon in reliance on this presentation material.

This presentation contains forecasts and forward looking statements. Such statements are predictions only based on available data which maybe unreliable and is subject to inherent risks and uncertainties which could cause actual values, results, performances or achievements to differ materially from those expressed, implied or projected in this presentation.

This overview does not purport to be all-inclusive or to contain all information which its recipients may require in order to make an informed assessment of the projects prospects. Each of Poseidon, its officers, employees and advisers expressly disclaims any responsibility for the accuracy or completeness of the material contained in this presentation and excludes all liability for any loss or damage which may be suffered by any person as a consequence of any information in this presentation or any error or omission there from. Poseidon accepts no responsibility to update any person regarding any inaccuracy, omission or change in information in this presentation.

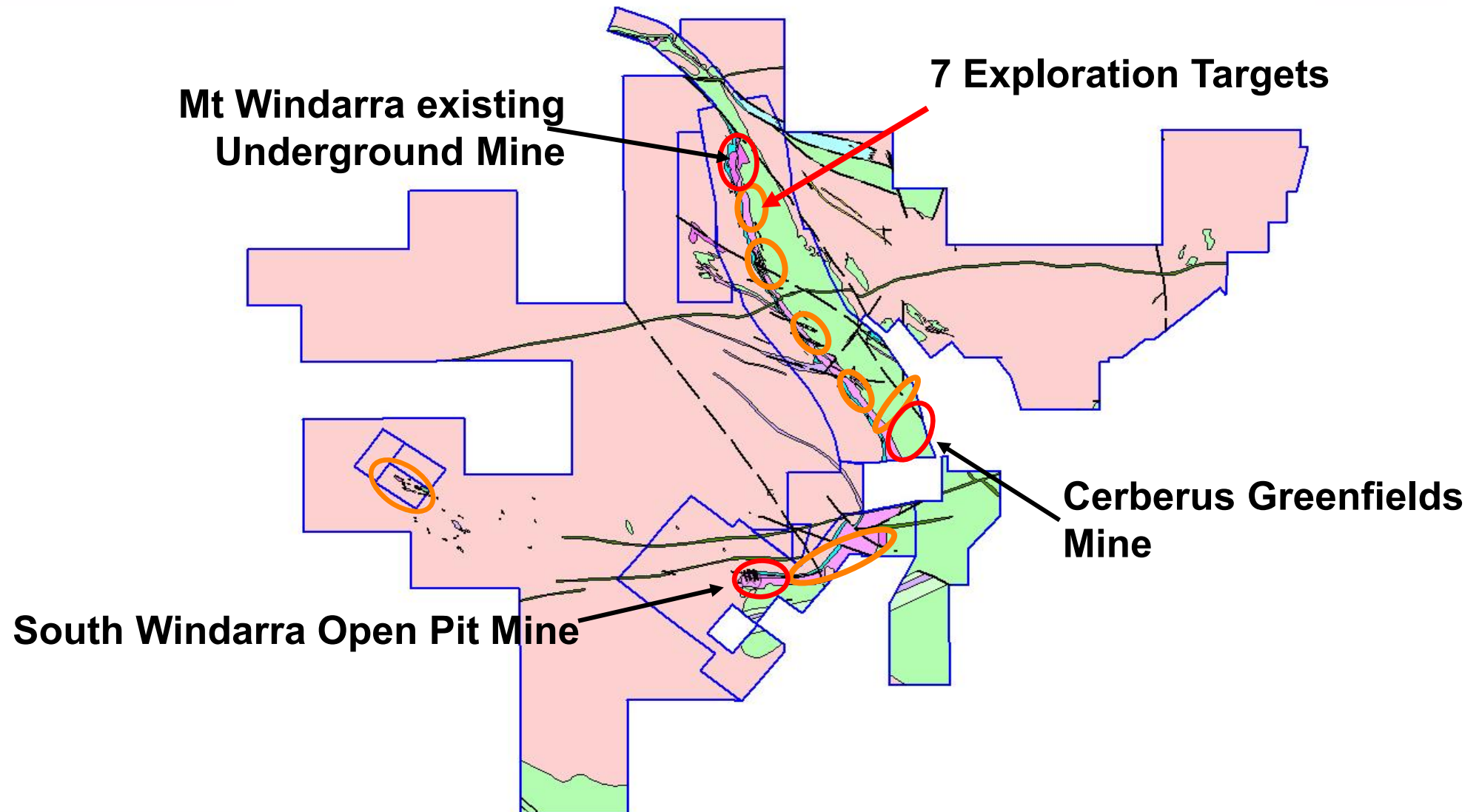
Australia's New Nickel

POSEIDON NICKEL

- One of few 'new' high grade nickel sulphide mines in world Production planned commencement in 2014
- 10,000 tonne p.a. output in Phase 1
- 18,000 tonne p.a. output in Phase 2 from circa 2018

Initial production from Mt Windarra (Brownfield) and Cerberus (Greenfield) mines

POSEIDON NICKEL



The Windarra Nickel Project is moving into production

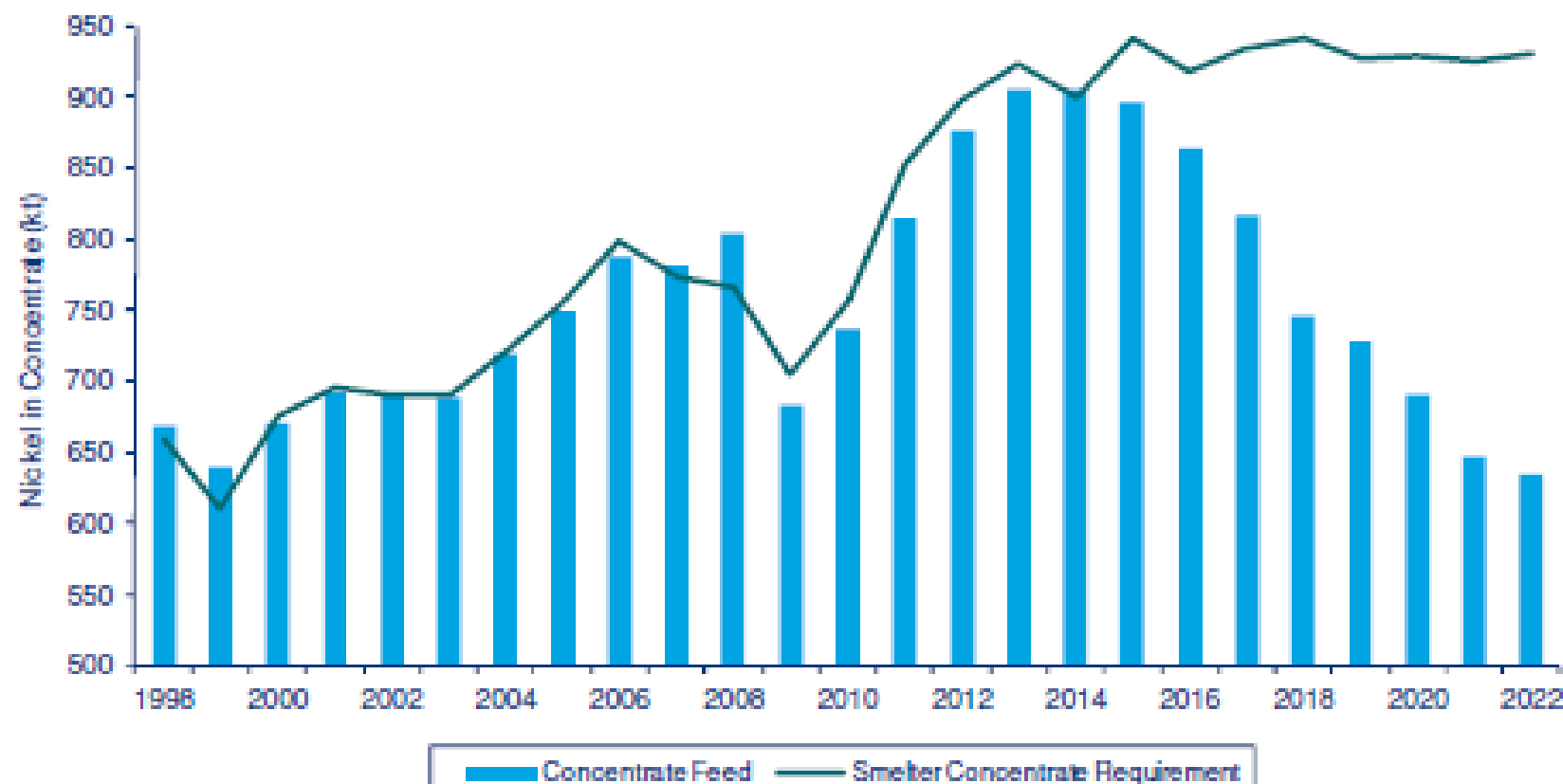
POSEIDON NICKEL

- Definitive feasibility study complete
- Final Government permitting delayed but believed close to completion
- Approx 12 month construction timeline
- First saleable concentrate mid 2014

It's all about final financing

Predicted Nickel Smelter Capacity

POSEIDON NICKEL



Source: Brook Hunt - A Wood Mackenzie Company

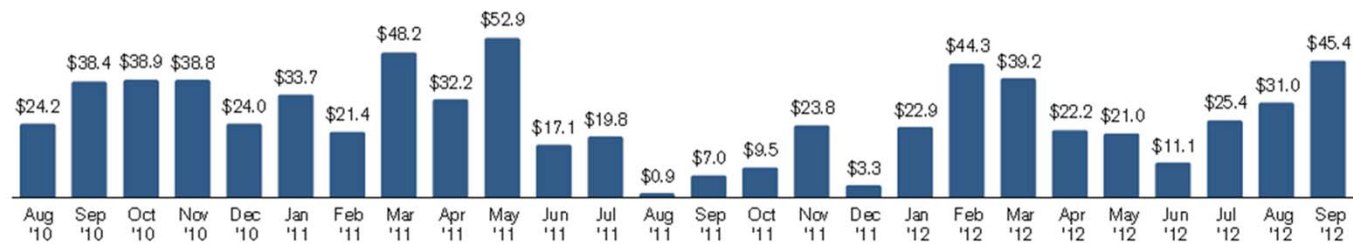
Time is Now!

POSEIDON NICKEL

**New issuance has rebounded strongly since June
and 2012 is on track to be the second largest year ever**

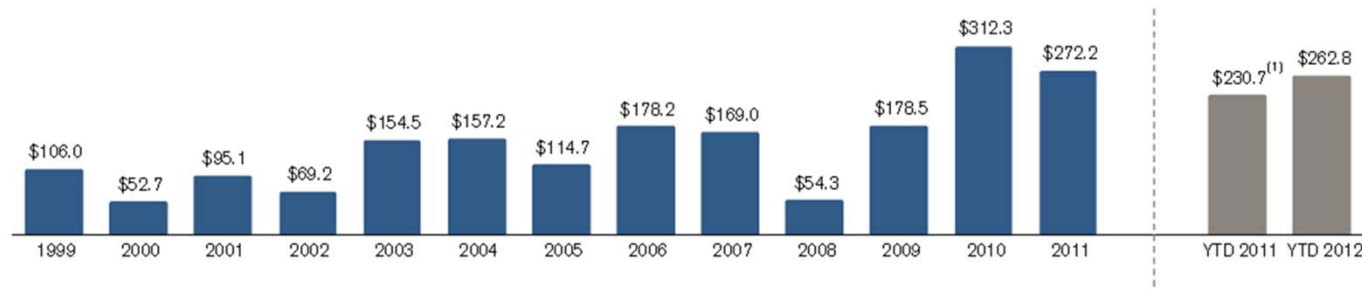
Monthly High Yield issue volumes since 2010

(US\$ in billions)



Annual High Yield issue volumes

(US\$ in billions)



YTD 2011 represents issues between 1 Jan 2011 & 21 Sep 2011

Time is Now!

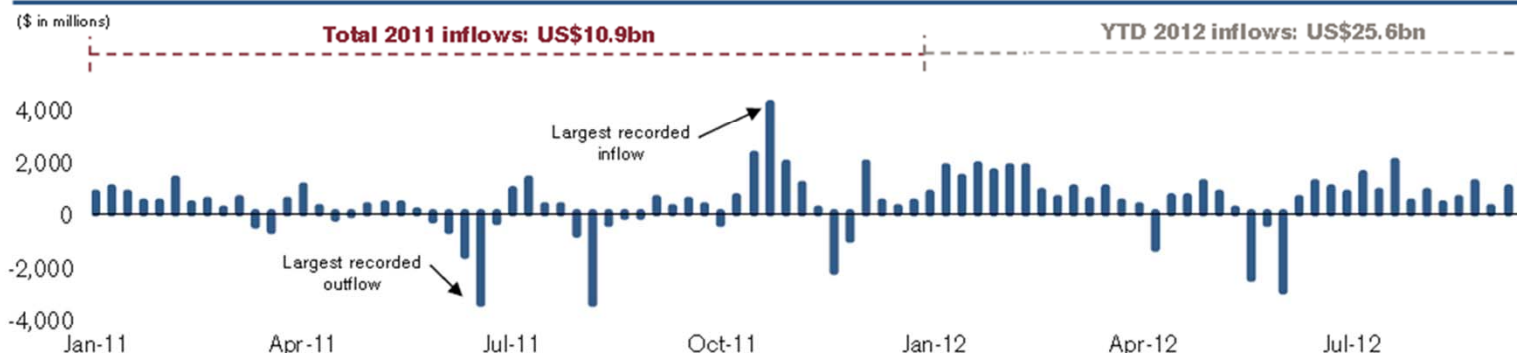
POSEIDON NICKEL

Credit Suisse HY Index is at all time lows with issuers looking to capitalise

HY weekly New Issue Volume & CS HY Index



Inflows / Outflows to HY Mutual Funds



With over \$45 billion priced so far in September, the market is on pace to break the all time global monthly volume record

Mt Windarra Mine Site

Main Portal
Entrance

Vertical Shaft
Headframe

Core Yard

Power
Plant

Main Offices
& Workshops

Tailings
Ponds &
Airstrip



The “Central Business District” for Mining

POSEIDON NICKEL



- Access to ‘external’ infrastructure means all capex spent on the project site
- Many world class Gold and nickel mines close by
- Direct access by road & rail to export ports of Fremantle & Esperance

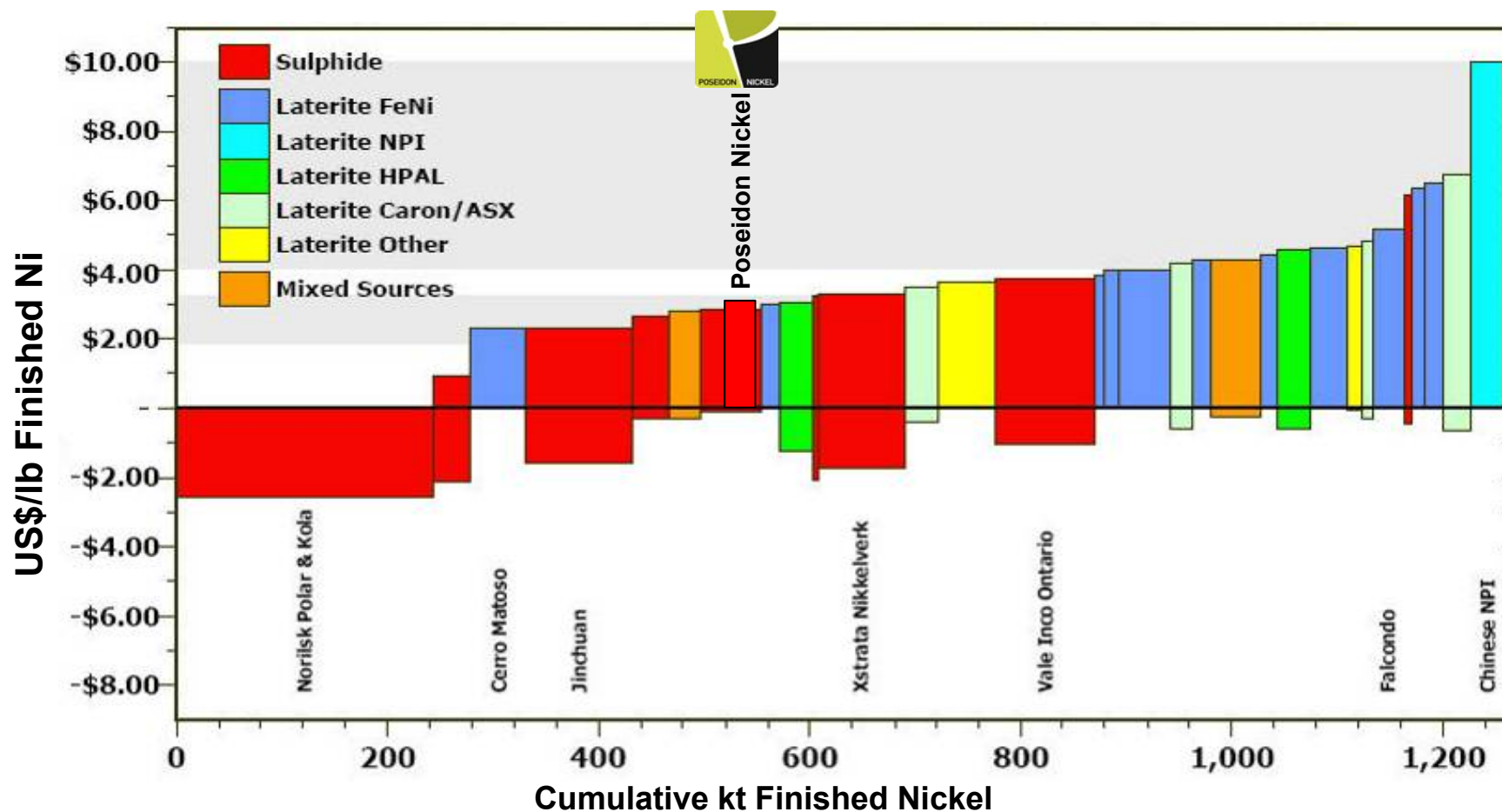
Key Points

POSEIDON NICKEL

- 10 year initial resource life
- 3.5 year gold tailings retreatment commences 2013
- Total remaining capital investment circa \$200m
- \$28m debt & equity funding package completed
- Cash cost US\$3.30/lb* average

Low Cash Cost Producer \approx US\$3.30/lb

POSEIDON NICKEL



Metalytics cost data

*based on full output. See assumptions book not in presentation

Poseidon cash cost is average over life of project

Over 4 years we have built Australia's largest nickel sulphide explorer by resource size

POSEIDON NICKEL

RESOURCE 2007*

RESOURCE 2011*

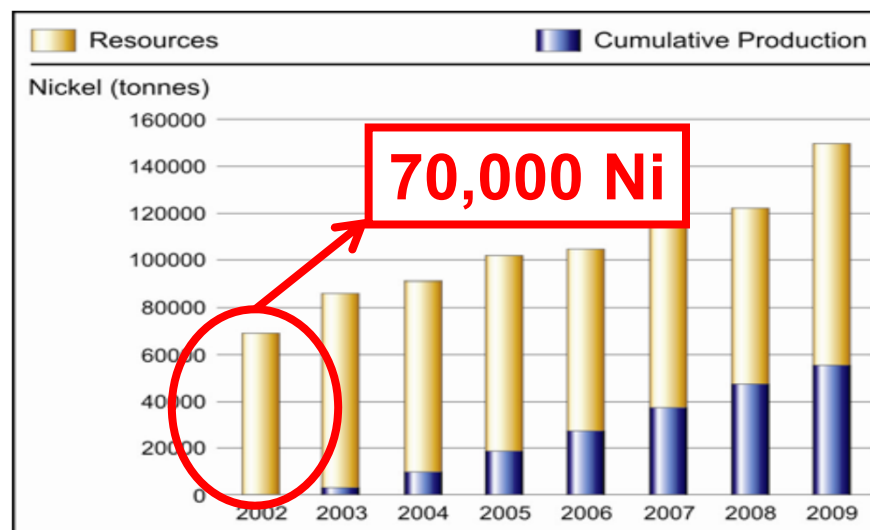
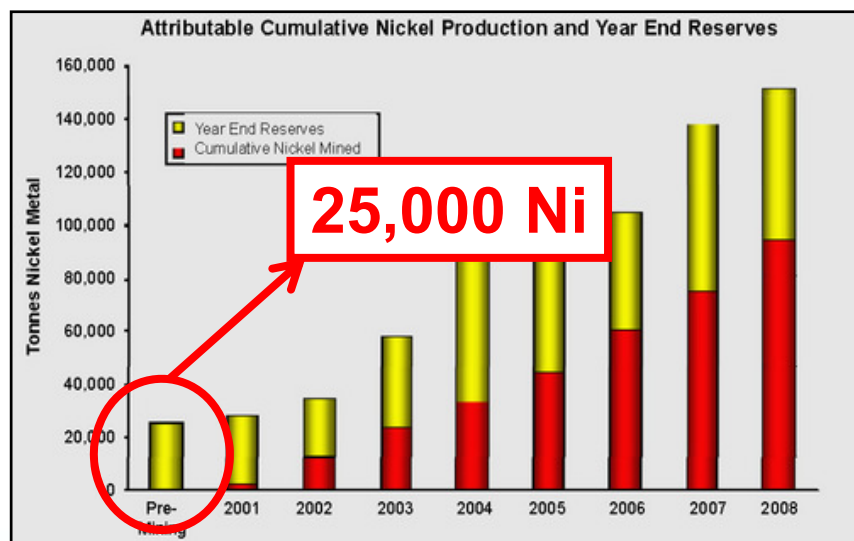
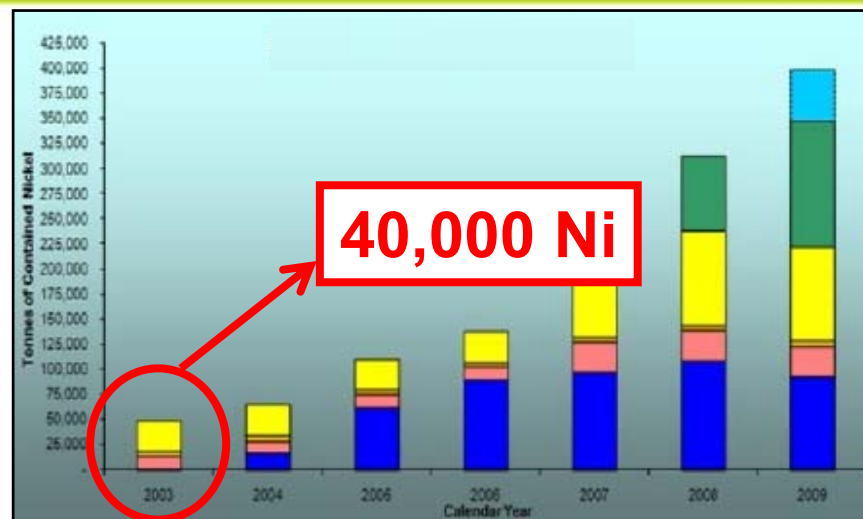
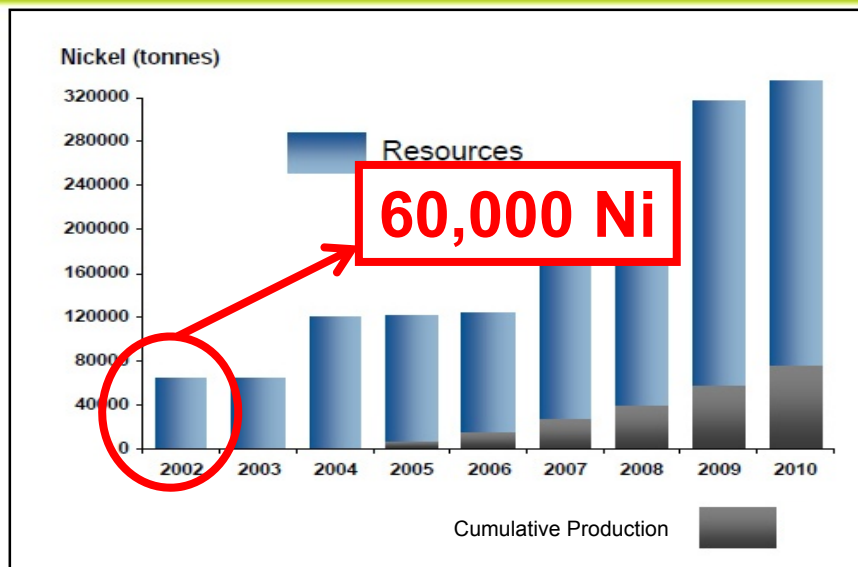
Mt Windarra	NIL	62,200 Ni @ 1.61%
Cerberus	Unknown	68,633 Ni @ 1.51%
South Windarra	NIL	7,533 Ni @ 0.98%

– Spent \$77m developing assets

*JORC compliant

Poseidon's 138,000 tonne nickel resource compares well with successful peers at start up

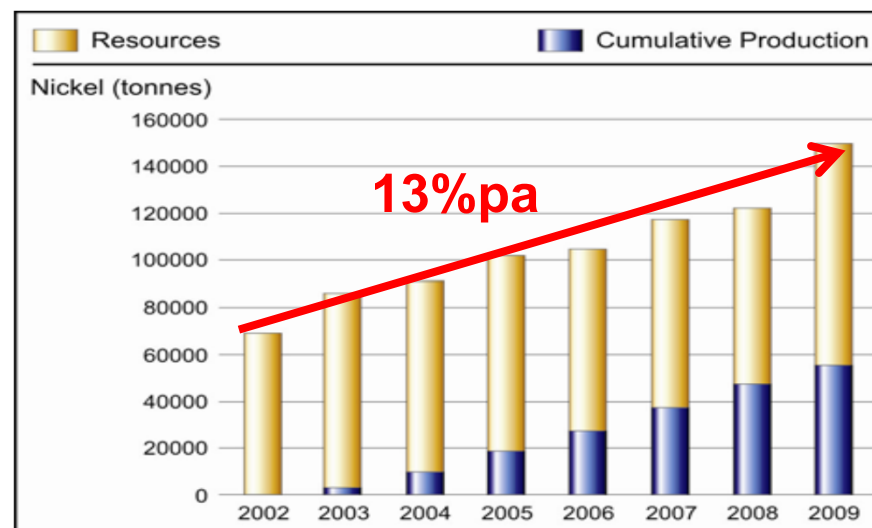
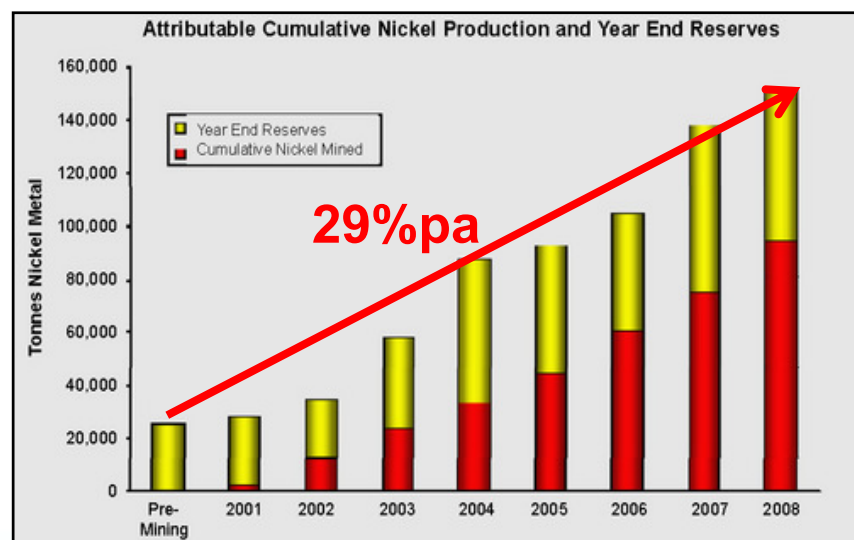
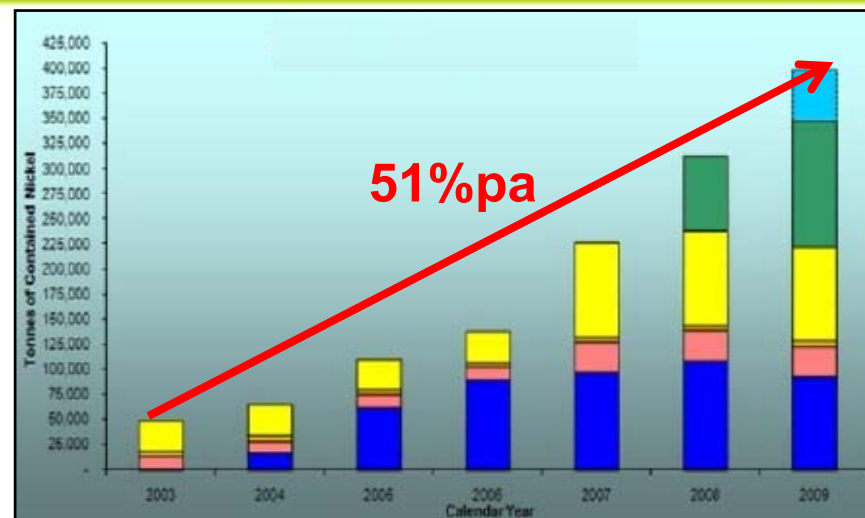
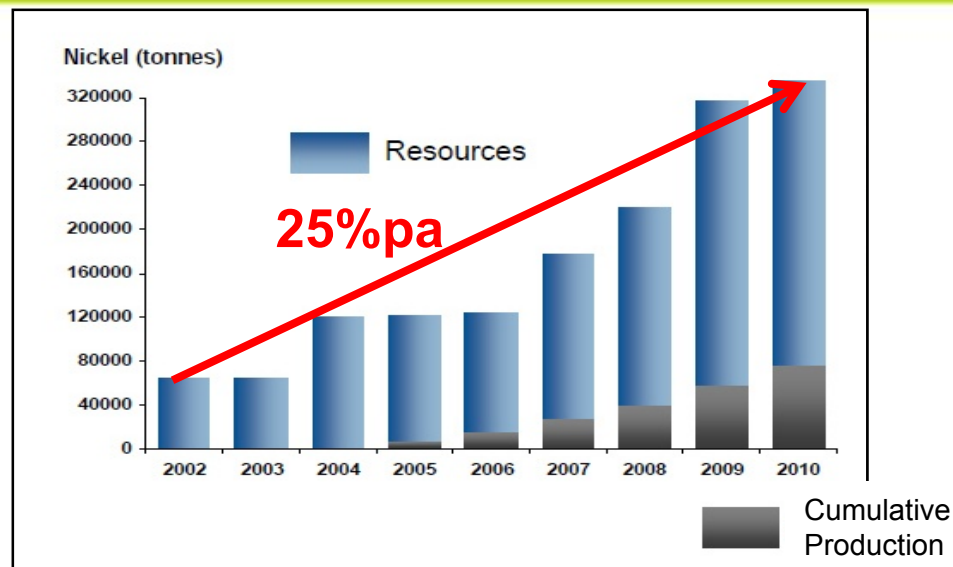
POSEIDON NICKEL



Approximate pre-mining resources using publicly available information

West Australian Peers have replaced resources faster than they have mined them

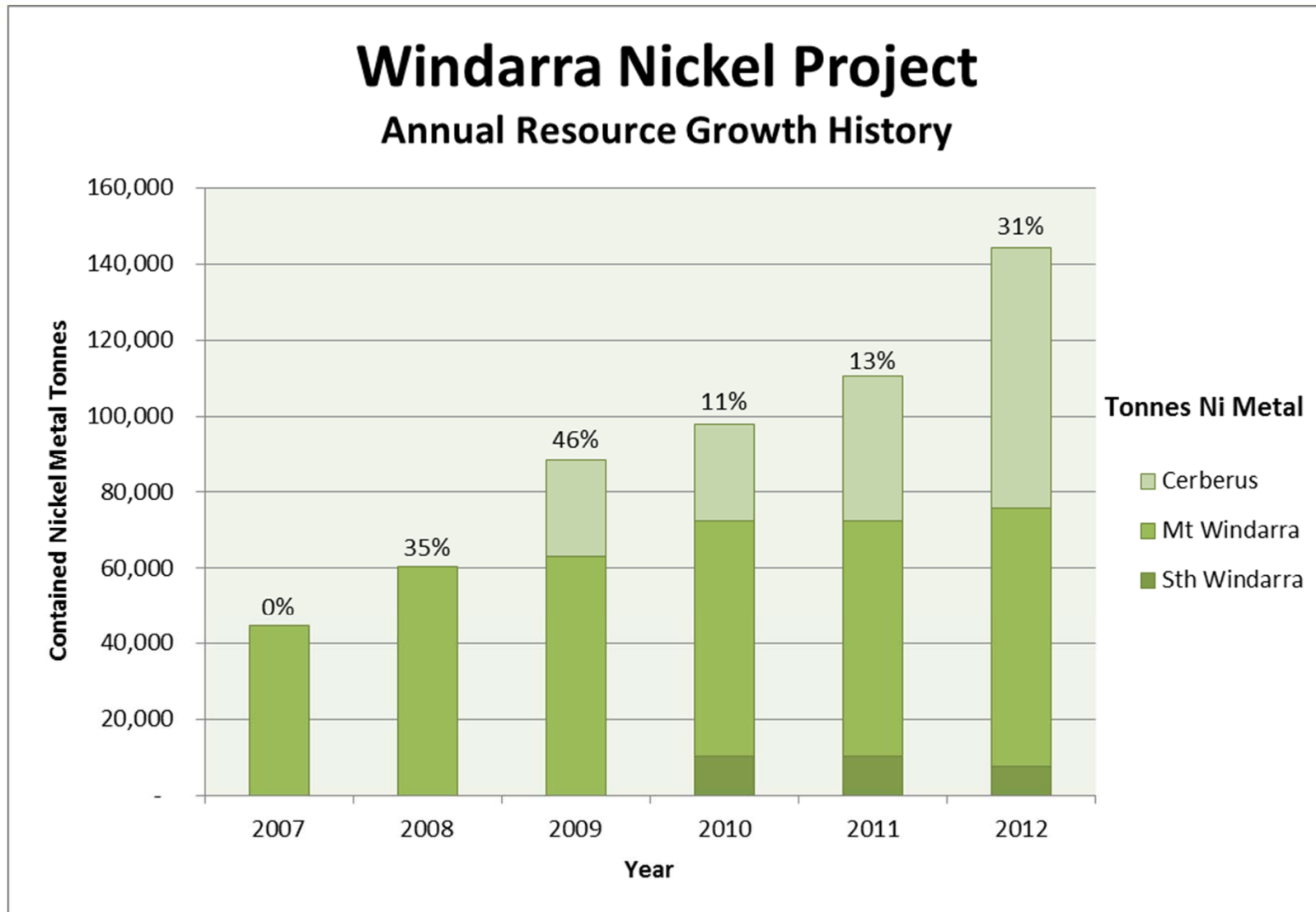
POSEIDON NICKEL



% stated is the compound growth rate of the resource from start up and provides a useful indicator to what may happen at Windarra

Annual Resource Growth

POSEIDON NICKEL

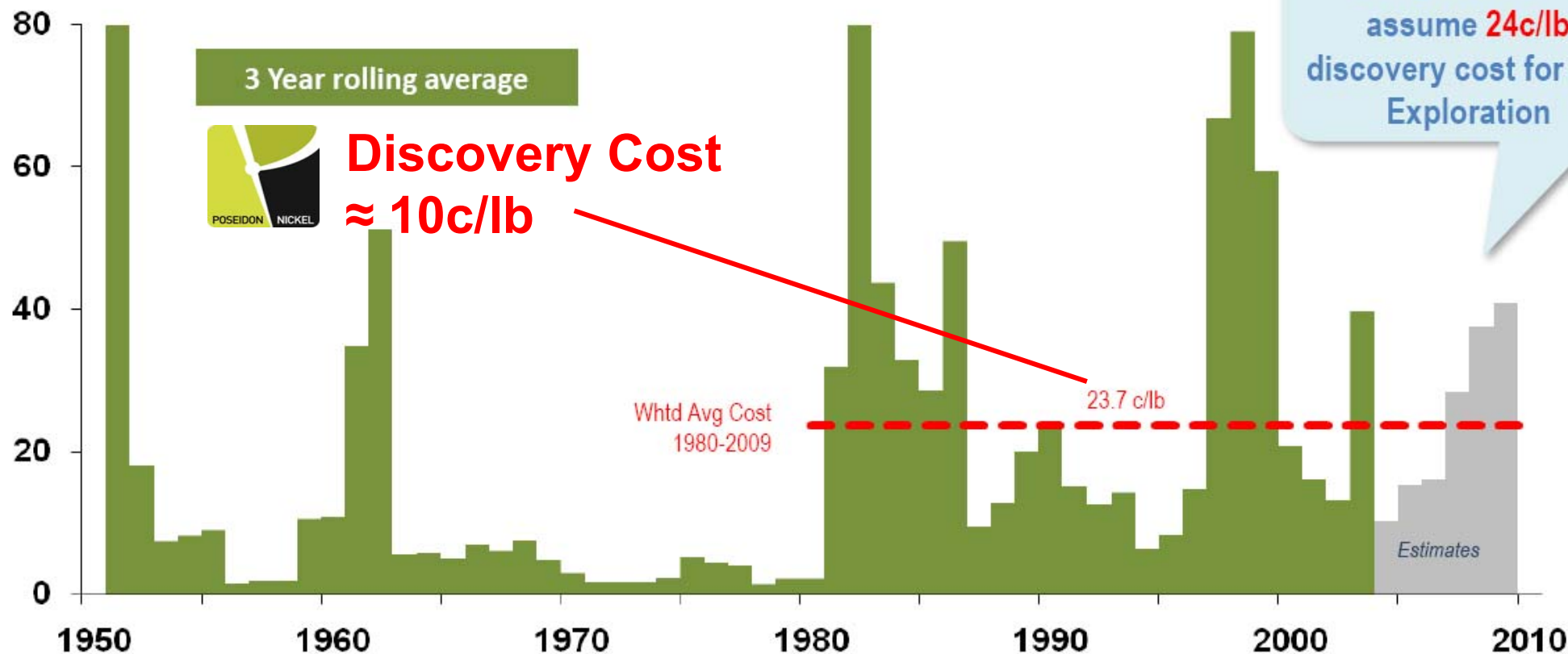


Discovery costs for NiS in Western World

Discovery costs are very cyclical

POSEIDON NICKEL

US Cents per lb Ni in 2010\$



Note: The reported costs exclude credits for by-product metal
Western World only

Source: MinEx Consulting Aug 2010

Ready To Go with \$50m of built mine infrastructure

POSEIDON NICKEL



Mt Windarra - Vertical Ore Shaft Headframe



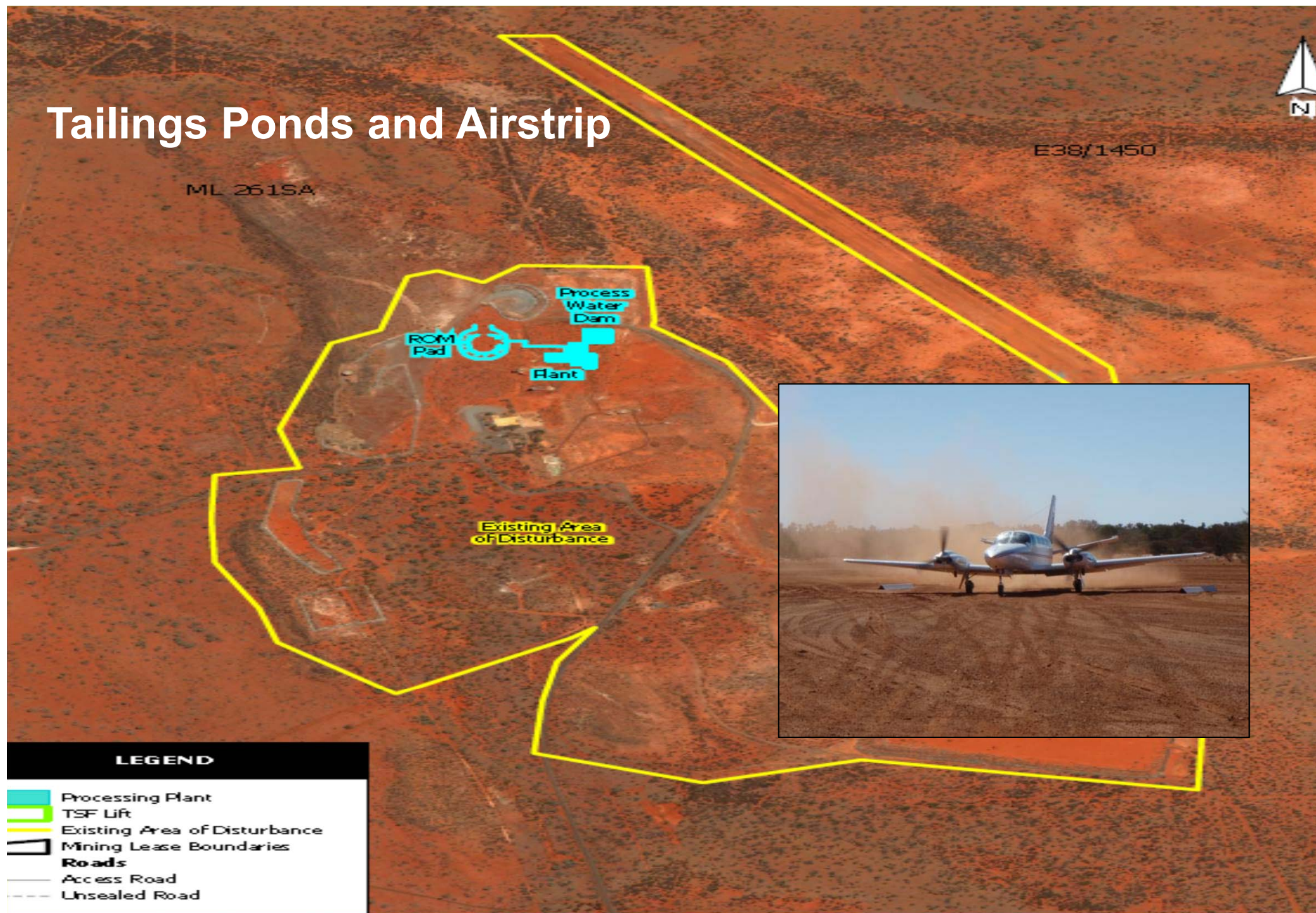
On Site Accommodation Expansion Completed June 2011



Mt Windarra - Power Plant Expansion



Tailings Ponds and Airstrip



South Windarra - In the desert the most valuable resource is water



First underground Reserve drilling starts at Mt Windarra in November 2012

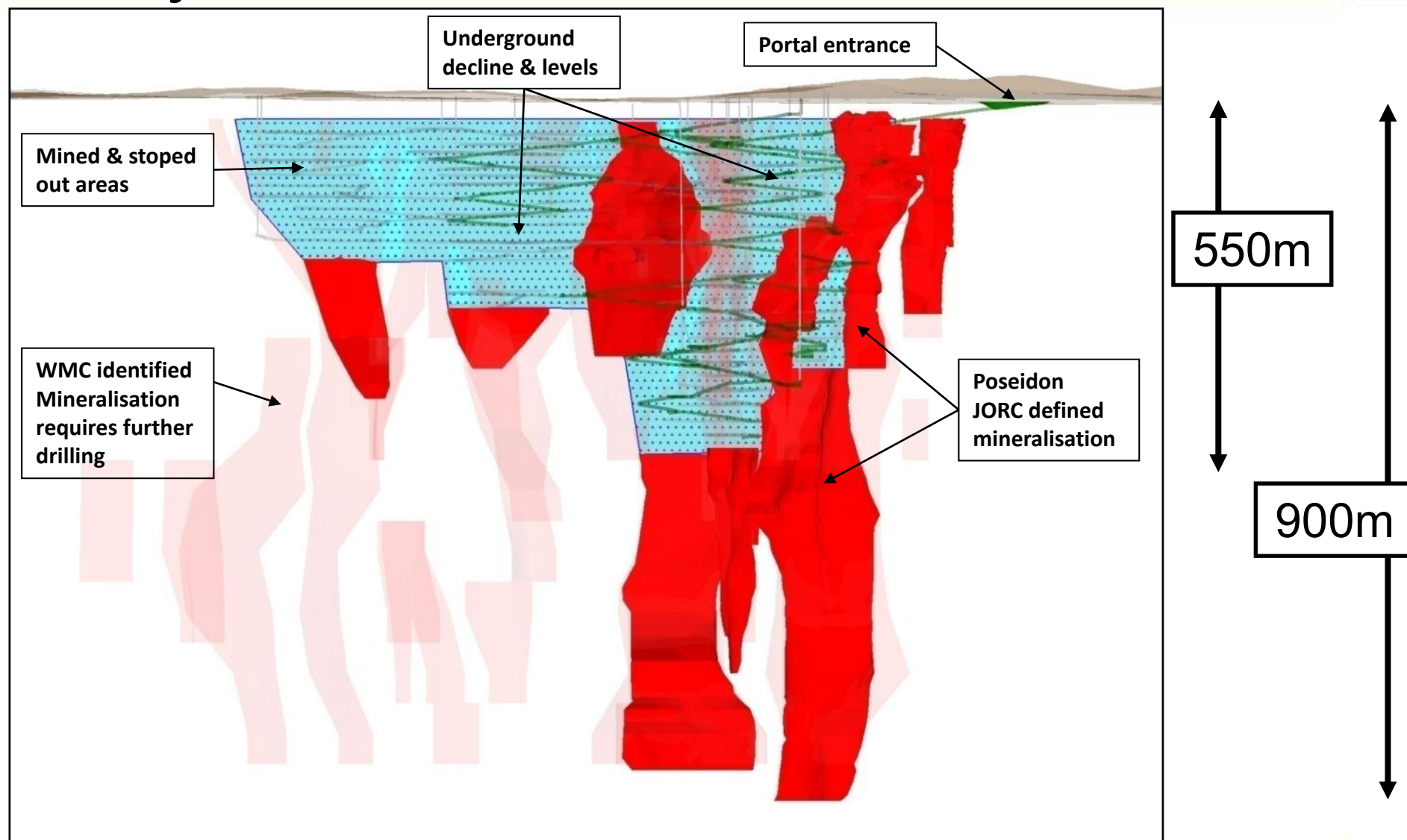
POSEIDON NICKEL

- Mining & refurbishment equipment on site and in operation
- Over 3 kilometres of decline refurbishment completed to date
- Drilling starts in November 2012
- Refurbishment will complete to 450m in 2012



Mt Windarra mined to 550m with ore body continuity to at least 900m

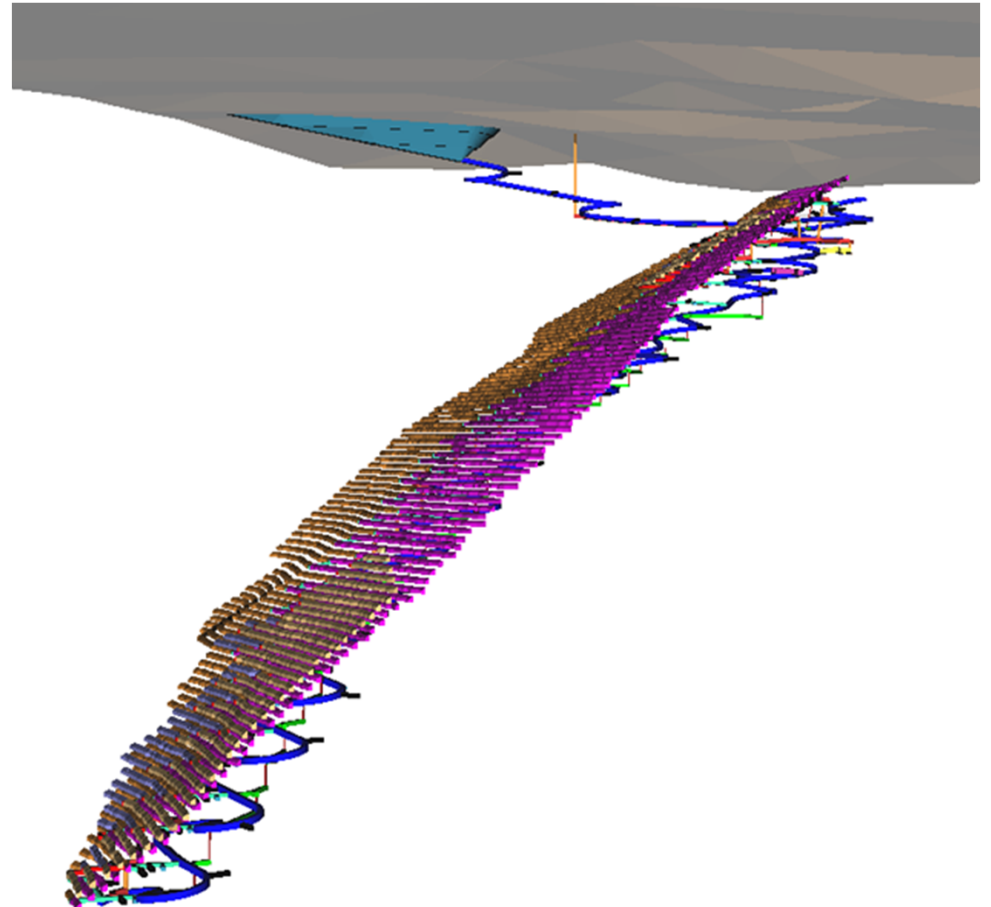
POSEIDON NICKEL



Cerberus is one of the few new discoveries in Australia in recent years

POSEIDON NICKEL

- Discovered during Poseidon's first and only regional drilling campaign indicating more discoveries likely
- Cerberus is an underground deposit commencing 64m from surface
- Mine is high grade, continuous and extends over 1.4km to a known depth of 700m & 400m wide
- Ore will be trucked 10kms to the Mt Windarra concentrator
- Drilling indicates significant resource expansion likely



Tailings Retreatment Facilities

POSEIDON NICKEL

- 20 year production profile has left a tailings inventory of circa 50,000 ounces gold (post recovery)
- Definitive Feasibility Study completed for Au with 3.5 year life
- Potential for additional Gold production



New Build Concentrator

POSEIDON NICKEL

- 700,000 tonne concentrator to take Mt Windarra & Cerberus Ore without need for blending or batching
- Will produce approx 10,000 tonnes nickel in concentrate per annum
- Standard crush, grind, float, dry plant - low risk & well understood
- Engineering completed and fixed price lump sum received

Resource Table

Windarra Nickel Project Sulphides	Cut Off Grade	Resource Category								
		Indicated			Inferred			TOTAL		
		Tonnes	Ni% Grade	Ni Metal t	Tonnes	Ni% Grade	Ni Metal t	Tonnes	Ni% Grade	Ni Metal t
Mt Windarra	0.75%	974,000	1.25	12,400	2,977,000	1.88	55,900	3,951,000	1.73	68,300
South Windarra	0.80%	772,00	0.98	7,500	-	-	-	772,00	0.98	7,500
Cerberus	0.75%	2,773,000	1.25	34,600	1,778,000	1.91	34,000	4,551,000	1.51	68,600
Total Sulphide		4,519,000	1.21	54,000	4,755,000	1.89	89,900	9,274,000	1.56	144,400

Note: The information in this report relates to Exploration Results and Mineral Resources based on information compiled by Mr N Hutchison, General Manager of Geology at Poseidon Nickel, who is a Member of The Australian Institute of Geoscientists and Mr I Glacken who is a Fellow of the Australasian Institute of Mining and Metallurgy as well as a full time employee of Optiro Pty Ltd. Mr Hutchison and Mr Glacken both have sufficient experience which is relevant to the style of mineralisation and type of deposits under consideration and to the activity which they are undertaking to qualify as a Competent Person as defined in the 2004 Edition of the 'Australasian Code for Reporting of Exploration Results, Mineral Resources and Ore Reserves.' Mr Hutchison and Mr Glacken have consented to the inclusion in the report of the matters based on his information in the form and context in which it appears.

The Australian Securities Exchange has not reviewed and does not accept responsibility for the accuracy or adequacy of this release.



Australia's 'New' Nickel

Australian Nickel Conference

David Singleton
Managing Director & CEO

October 2012

POSEIDONNICKEL