



# Tanami Heavy Rare Earth Project – Poised for Success

Presented by George Bauk, Executive Director

# DISCLAIMER

## PVW Resources ACN 124 541 466

This document is neither a prospectus nor an offer to subscribe for Shares.

PVW Resources ACN 124 541 466 (the Company) and its directors, employees and consultants make no representations or warranty as to the accuracy, reliability or completeness of this document, and have no liability, including liability to any person by reason of negligence of, or contained in or derived from, or for any omissions from this document, except liability under statute that cannot be excluded.

This document contains reference to certain targets and plans of the Company which may or may not be achieved. The performance of the Company may be influenced by a number of factors, uncertainties and contingencies, many of which are outside the control of the Company and its directors, staff and consultants.

## Compliance Statement

The information in this report that relates to REE exploration results is extracted from the ASX announcements dated 13 October titled “Confirmation of high-grade Heavy Rare Earths at Tanami Project (100%)”, Western Australia”, dated 18 November titled “Tanami Rare Earths Project – Exploration Update” and dated 7 December titled “Mineralogy confirms Heavy Rare Earths at Tanami are Xenotime” which are available to view on the Company’s website ([pvwresources.com.au](http://pvwresources.com.au)). The Company

confirms that it is not aware of any new information or data that materially affects the information included in the original market announcements and that all material assumptions and technical parameters in the relevant announcements continue to apply and have not materially changed. The Company confirms that the form and context in which the Competent Person’s findings are presented have not been materially modified from the original market announcements.

## Competent Person’s Statement

The information in this document relating to gold exploration activities is based on information compiled by Mr Karl Weber, a professional geologist with over 25 years’ experience in minerals geology including senior management, consulting, exploration, resource estimation, and development. Mr Weber completed a Bachelor of Science with Honours at Curtin University in 1994; is a member of the Australasian Institute of Mining and Metallurgy (Member No. 306422) and thus holds the relevant qualifications as Competent Person as defined in the JORC Code. Mr Weber is a full-time employee of PVW Resources. Mr Weber has sufficient experience which is relevant to the style of mineralisation and type of deposit under consideration and to the activity which he is undertaking to qualify as a Competent Person as defined in the 2012 Edition of the ‘Australasian Code for Reporting of Exploration results, Mineral Resources and Ore Reserves’. Mr Weber consents to the inclusion in this document of the matters based on his information in the form and context in which it appears.



# EXPLORING IN TIER 1 JURISDICTIONS



## 1. Tanami Region

### Heavy REE province

including Northern Minerals  
Browns Range REE Project

### Established gold province

including Newmont's 14 Moz  
Au Callie Project

## 3. Leonora Region

**Top 10 most prospective Au  
region globally** and over 12  
million Au ounces produced

## 2. Kalgoorlie Region

### World Class Gold District

with over 70 million ounces Au  
produced including the Super  
Pit and Kanowna Belle

## 4. West Yilgarn Region

Ballinue Project is located in the  
Ni-Cu-PGE province that hosts  
**Chalice's Julimar Project**



Scan here to join  
our mailing list



# WHY INVEST IN PVW?



Exploring **Tier 1** mining jurisdictions for **REE** and **Gold** in Tanami, Kalgoorlie and Leonora.



Exciting heavy REE project with rock chip assays of up to **12.45% TREO in xenotime**.



**Tight capital structure**, 73 million shares.



**Forecast shortage of supply of REE**, due largely to the forecast demand from EV growth globally.



**Team with significant REE experience** including the exploration and development of the **Browns Range REE Project**.



**WA** focussed, leading jurisdiction for investment in mining and exploration and **significant new discoveries in recent years**.



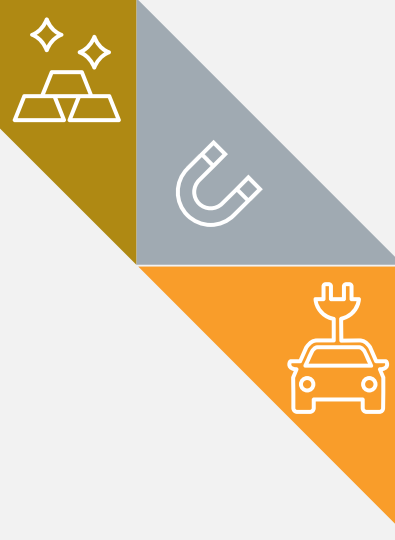
# CORPORATE OVERVIEW

Shares  
on issue  
**72,585,413**

Share  
price  
**48 cents**

Market  
capitalisation  
**\$35m**

Cash at bank  
(31 Dec 2021)  
**\$2.4m**

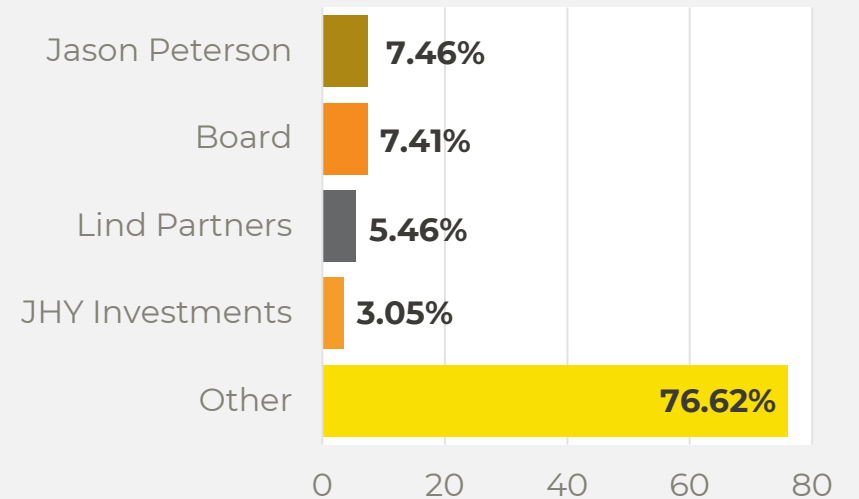


## Share price performance (ASX:PVW)



## Top shareholders

**Top 100 own 74.81%**



# BOARD AND MANAGEMENT



**DAVID WHEELER**  
NON-EXECUTIVE CHAIRMAN

- David has more than 30 years of Senior Executive Management, Directorships, and Corporate Advisory experience.
- He is a foundation Director and Partner of Pathways Corporate a boutique Corporate Advisory firm
- David has engaged in business projects in the USA, UK, Europe, NZ, China, Malaysia, Singapore and the Middle East.
- David is a Fellow of the Australian Institute of Company Directors
- Currently holding a number of Directorships and Advisory positions in Australian companies.



**GEORGE BAUK**  
EXECUTIVE DIRECTOR

- An experienced executive/director with 30 years in the resources industry.
- **Former MD/CEO of Northern Minerals 2010 to 2020. Responsible for the successful development of the Northern Minerals Browns Range REE Project.**
- Global operational and corporate roles with Northern Minerals, WMC Resources and Western Metals.
- George has a strong background in building companies, with a variety of commodities – in particular rare earths, graphite, lithium, gold, nickel and uranium.
- George is currently Chairman of: Lithium Australia, BlackEarth Minerals and Valor Resources.



**COLIN MCCAVALANA**  
NON-EXECUTIVE DIRECTOR

- Colin has over 40 years' experience in the mining and resources sector and has extensive experience in exploration, project development, capital raising, financing, operations.
- He has had extensive involvement in rare earths and **gold exploration and development** including the successful development of several CIP and heap leach projects in WA.
- Colin is also Chairman of Reward Minerals Limited.
- **Colin was the founding director of Northern Minerals and PVW Resources and oversaw the development of the Browns Range REE Project.**



**JOE GRAZIANO**  
COMPANY SECRETARY

- Joe has over 30 years' experience providing a wide range of business, financial and taxation advice.
- Over the past 7 years he has been focused on Corporate Advisory and strategic planning with Corporations and Private Businesses.
- He has extensive experience in Capital Raisings, ASX compliance and regulatory requirements.
- Joe is currently a director of Pathways Corporate Pty Ltd a specialised Corporate Advisory business and sits on several Boards of ASX Listed Companies.
- He also provides CFO and Company Secretarial services as part of his service offering.



**KARL WEBER**  
EXPLORATION MANAGER

- Karl has over 25 years of experience within a diverse career in **gold and base metal exploration** within Australia and Internationally.
- He has held technical and management positions with Mines and Resources Australia (COGEMA), Harmony Gold, Venturex Resources (Brazil) and Gascoyne Resources.
- His roles include geologist, manager and country manager.
- He has held roles in many successful teams taking projects from discovery through resource definition to mining. Projects include White Foil and Frog's Leg.



**ROBIN WILSON**  
CONSULTANT GEOLOGIST

- Robin has held senior exploration positions in several exploration and mining companies, including Polaris Metals, Tanganyika Gold, Troy Resources and CRA Exploration.
- **Between 2006 and 2021 Robin led the Northern Minerals exploration team that discovered the Browns Range REE deposits that has produced HRE carbonate.**
- He also spent 5 years working in oil and gas exploration for Woodside Energy.
- During nearly 30 years of involvement in mineral exploration, Robin has worked on rare earths, gold, nickel, REE, uranium, copper, lithium and phosphate projects throughout Australia and Africa.





Pargee Sandstone

Killi Killi Formation

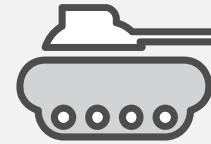
# TANAMI RARE EARTHS

Australia's new Heavy Rare Earth province

# RARE EARTHS ARE CRITICAL TO MANY INDUSTRIES



Light Rare Earths														Heavy Rare Earths			
Lanthanum 57 La 138.91	Cerium 58 Ce 140.12	Praseodymium 59 Pr 140.91	Neodymium 60 Nd 144.24	Samarium 62 Sm 150.36	Europium 63 Eu 151.96	Gadolinium 64 Gd 157.25	Terbium 65 Tb 158.93	Dysprosium 66 Dy 162.50	Holmium 67 Ho 164.93	Erbium 68 Er 167.26	Thulium 69 Tm 168.93	Ytterbium 70 Yb 173.04	Lutetium 71 Lu 174.967	Yttrium 39 Y 88.906			

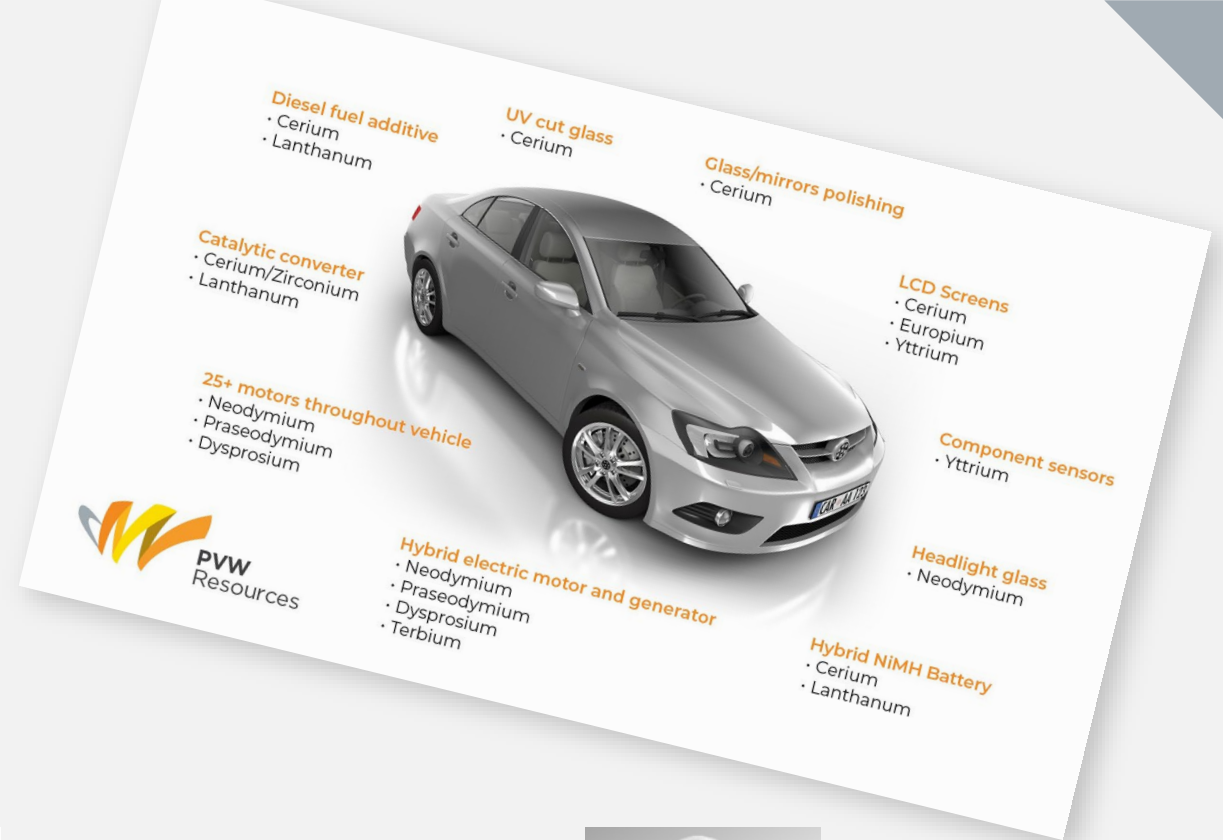


- ▶ Underpins the best technology for permanent magnets
- ▶ Permanent magnets are a critical component of the EV future
  - Permanent magnet motors are approximately 15% more efficient than an induction motor, therefore from a total cost perspective, it is 4–5 times cheaper than an induction motor
- ▶ Permanent magnets are essential to critical defence technology
- ▶ Tanami Region currently hosts a critical deposit and processing facility at Northern Minerals Browns Range REE Project
- ▶ There is a demand for a diversified supply chain of Rare Earths to meet the every growing EV targets set for 2030



# A TEAM OF REE EXPERTS

**Our REE experts** who have been involved in the discovery of the Browns Range REE deposits and led the transition from greenfields to production, **ready to do it again, differently.**



**George Bauk**, former Northern Minerals MD/CEO, 2010–20 and led the transition to a producer of HRE carbonate.



**Robin Wilson**, former Northern Minerals Exploration Manager, credited with discovery of Browns Range.



**Colin McCavana**, founder and former Northern Minerals Chairman who oversaw the companies development.

# ENSURE THERE IS A BALANCED SUPPLY CHAIN GLOBALLY



- ▶ China's dominance in supply of Heavy REE is over 99%
- ▶ Rising geo-political tensions
- ▶ Green production of Heavy REE
  - Current production is from Chinese Ionic Clays
- ▶ Provide confidence of supply to meet the demands set out in the Biden Electrification Policy 2030

Dysprosium Oxide 99%min China US\$/kg



Terbium Oxide 99.9%min China US\$/kg

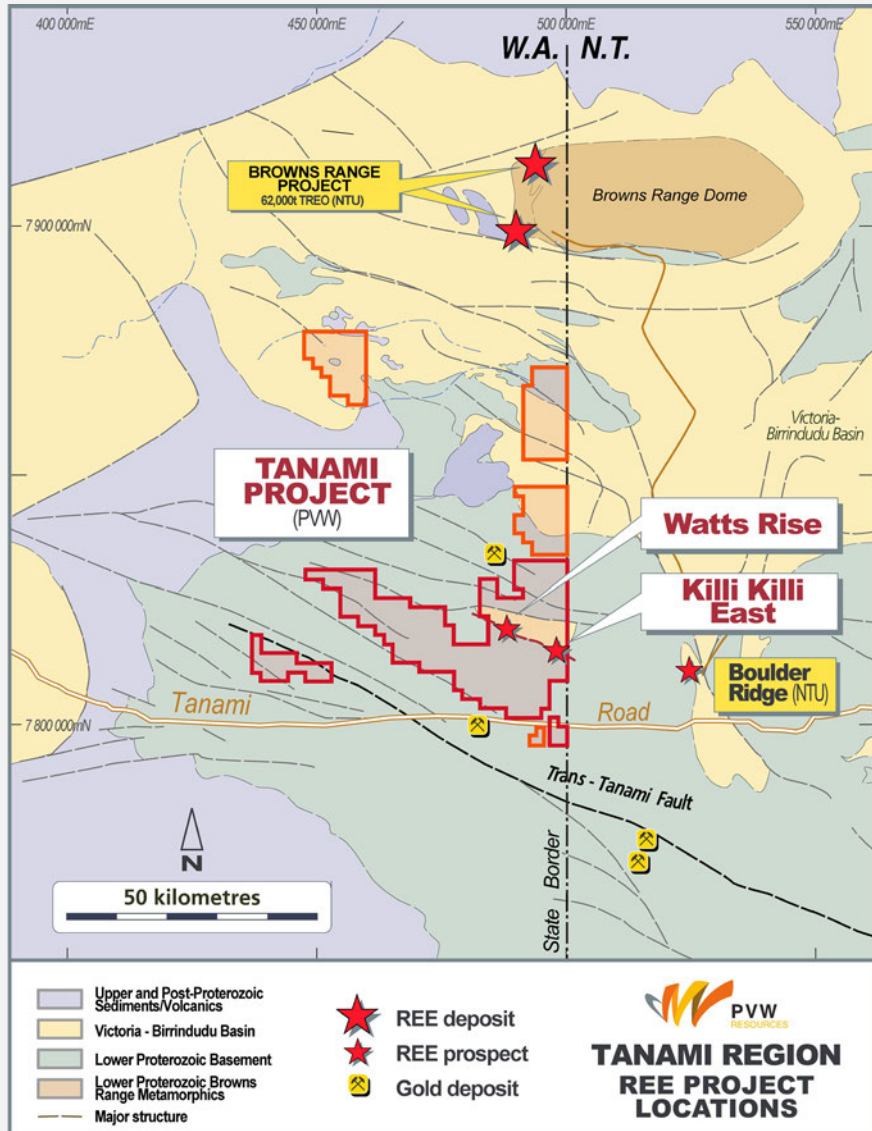


“The Middle East has oil, China has rare earth.”

Chinese President, Deng Xiaoping, 1987



# TANAMI – EMERGING HEAVY RARE EARTHS PROVINCE

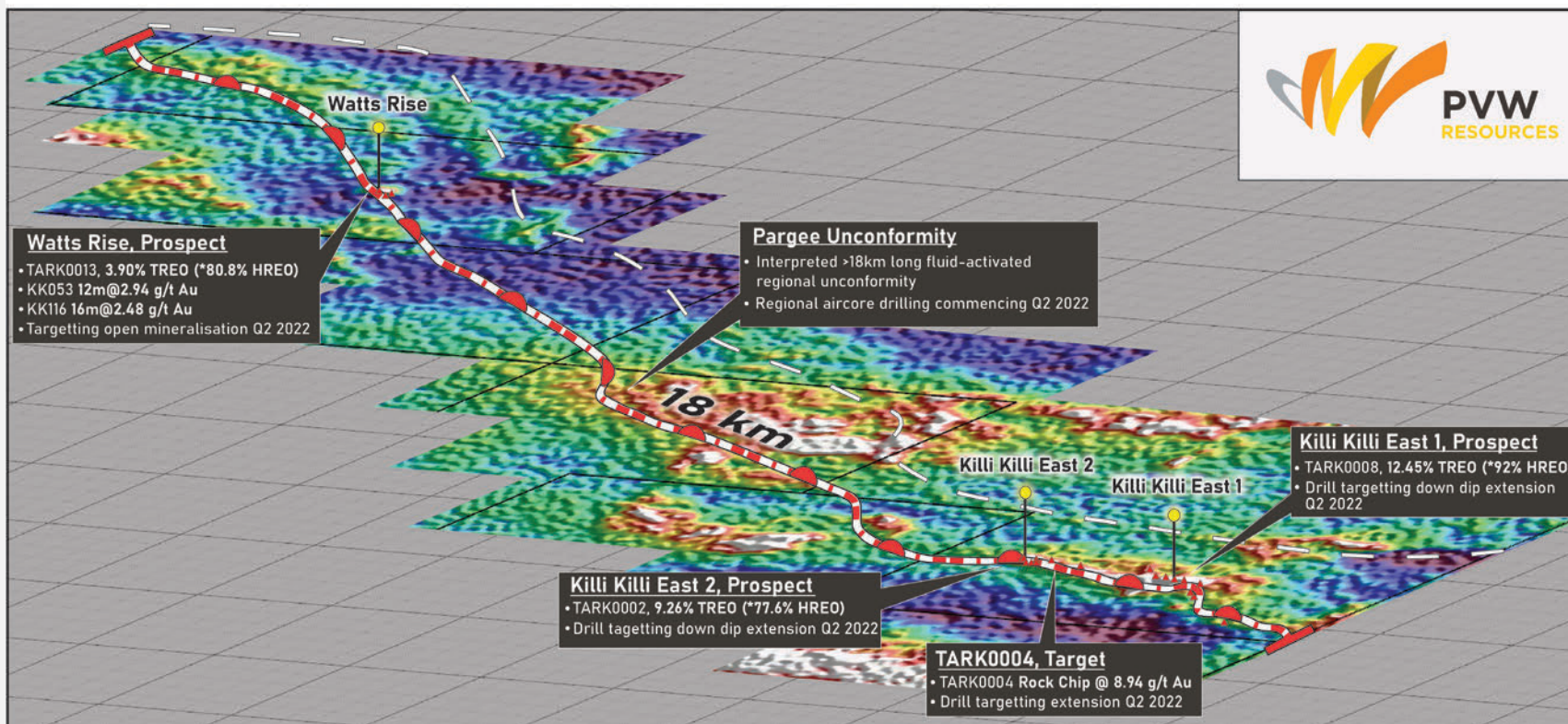


- ▶ Field programs commenced in August 2021 at Killi Killi and Watts Rise prospects.
- ▶ Regional potential for hydrothermal unconformity-related rare earth mineralisation along the 18km long Watts Rise-Killi Killi trend.
- ▶ The contact/unconformity between the Pargee Sandstone and the Killi Killi Formation is considered prospective for this style of mineralisation.
- ▶ Similar geological setting to Northern Minerals Browns Range Project which is located 100km to the north.
- ▶ Tanami Road located within 15 kilometres of the project, with Federal and WA Government plans to upgrade and seal the road up to the WA/NT border.

# 18KM CORRIDOR STRETCHES FROM KILLI KILLI TO WATTS RISE



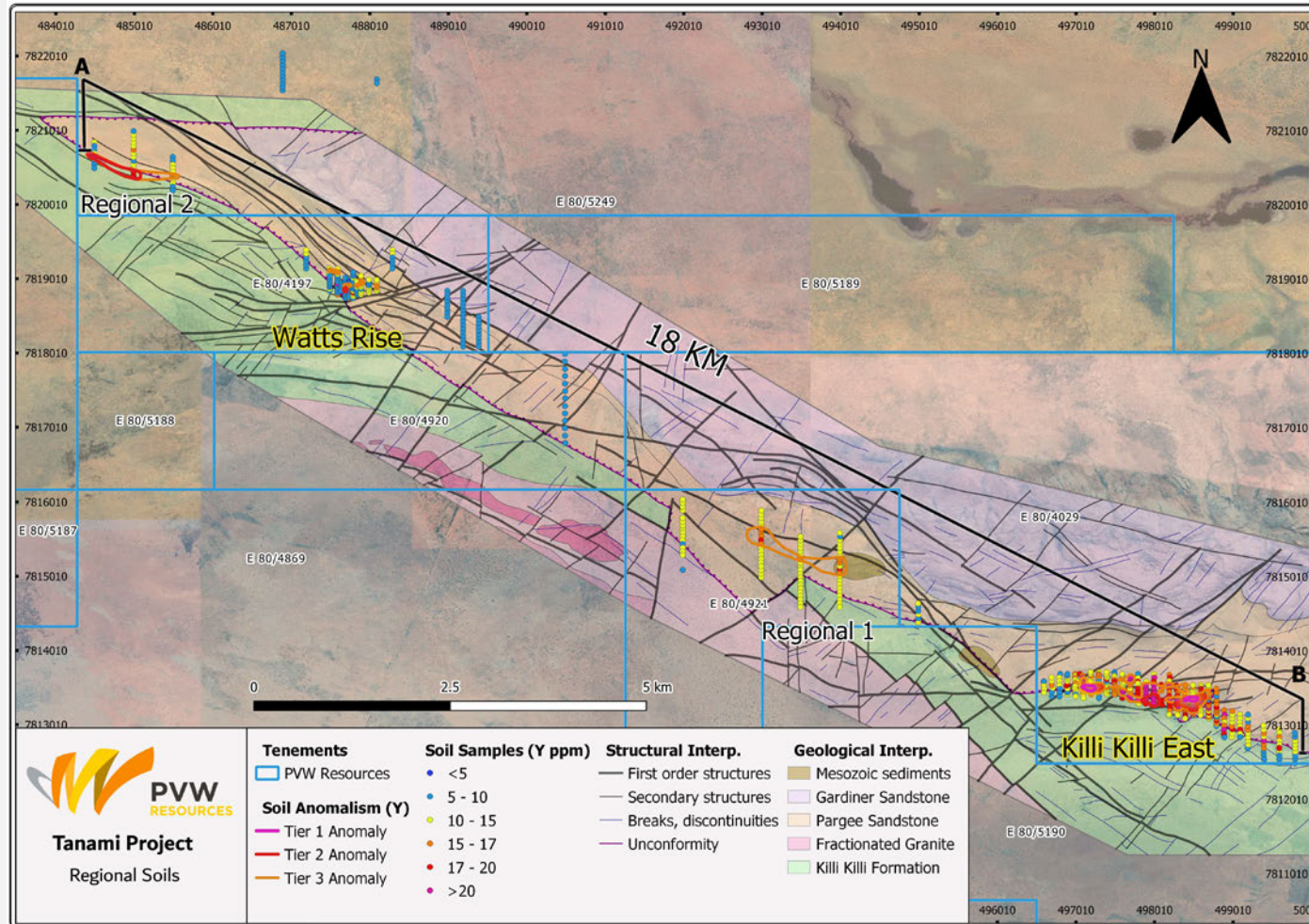
- ▶ REE regional exploration program to focus on the area between Watts Rise and Killi Killi East.
- ▶ Re-processing and interpretation of airborne radiometric and magnetic data reveal potential new REE targets.
- ▶ Soil assay results define multiple targets with drilling planned for April 2022.



Watts Rise-Killi Killi East trend – U/Th radiometric anomalies



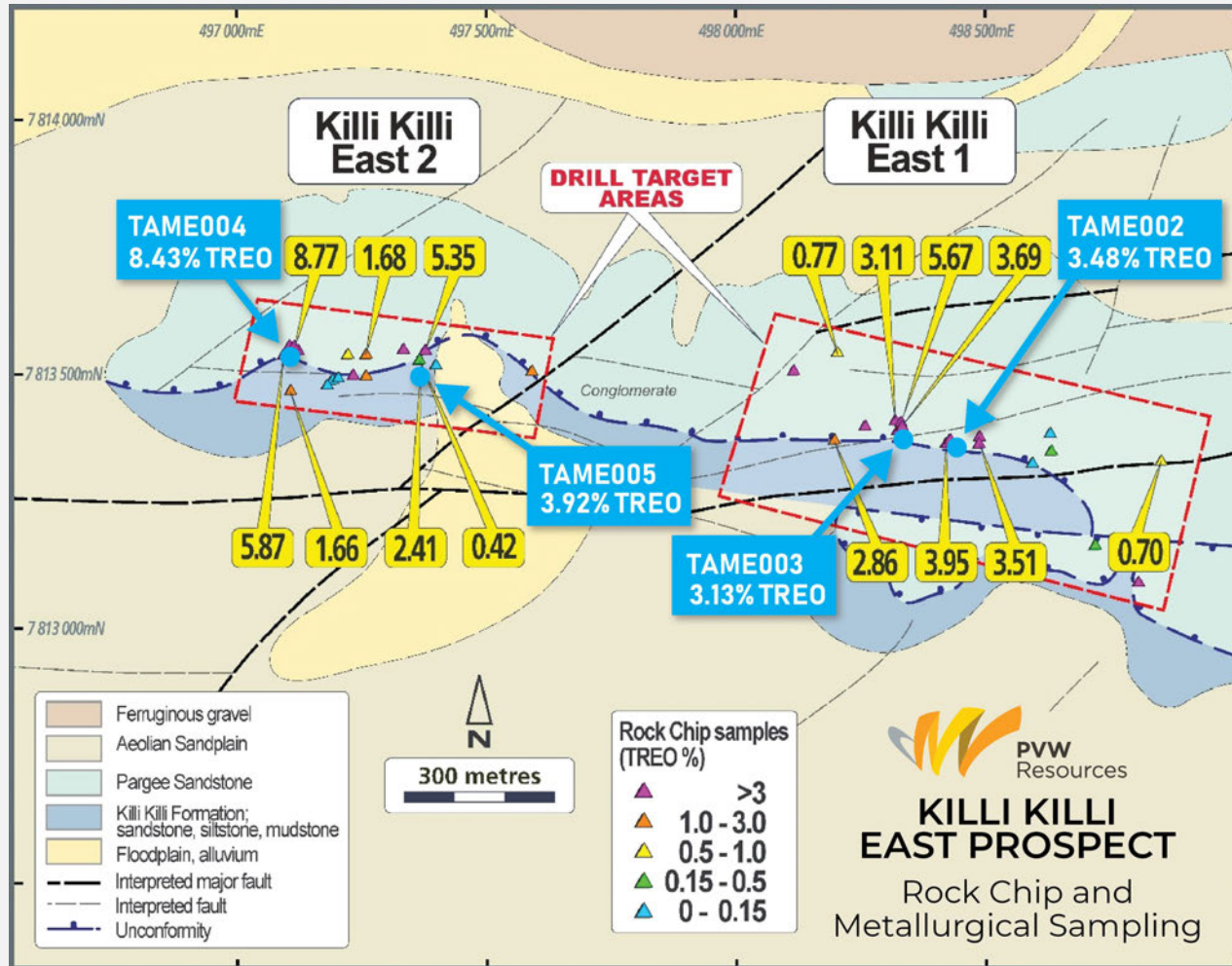
# GEOPHYSICAL INTERPRETATION AND SOIL SAMPLING RESULTS SUPPORT PROSPECTIVITY OF WATTS RISE-KILLI KILLI EAST TREND



## 2021 field program reaps rewards:

- ▶ Soil sampling results demonstrate large drill target area at Killi Killi East
- ▶ Soil sampling also identifies multiple drill targets at Watts Rise
- ▶ Regional soil sampling results support the prospectivity of the regional unconformity with new REE anomalies indicated
- ▶ Geophysical interpretation supports high priority targets and new geochemical anomalies
- ▶ Several U/Th radiometric anomalies require on-ground follow-up.

# TANAMI – KILLI KILLI EAST – 3KM LONG REE TARGET WITH UP TO 12.45% TREO

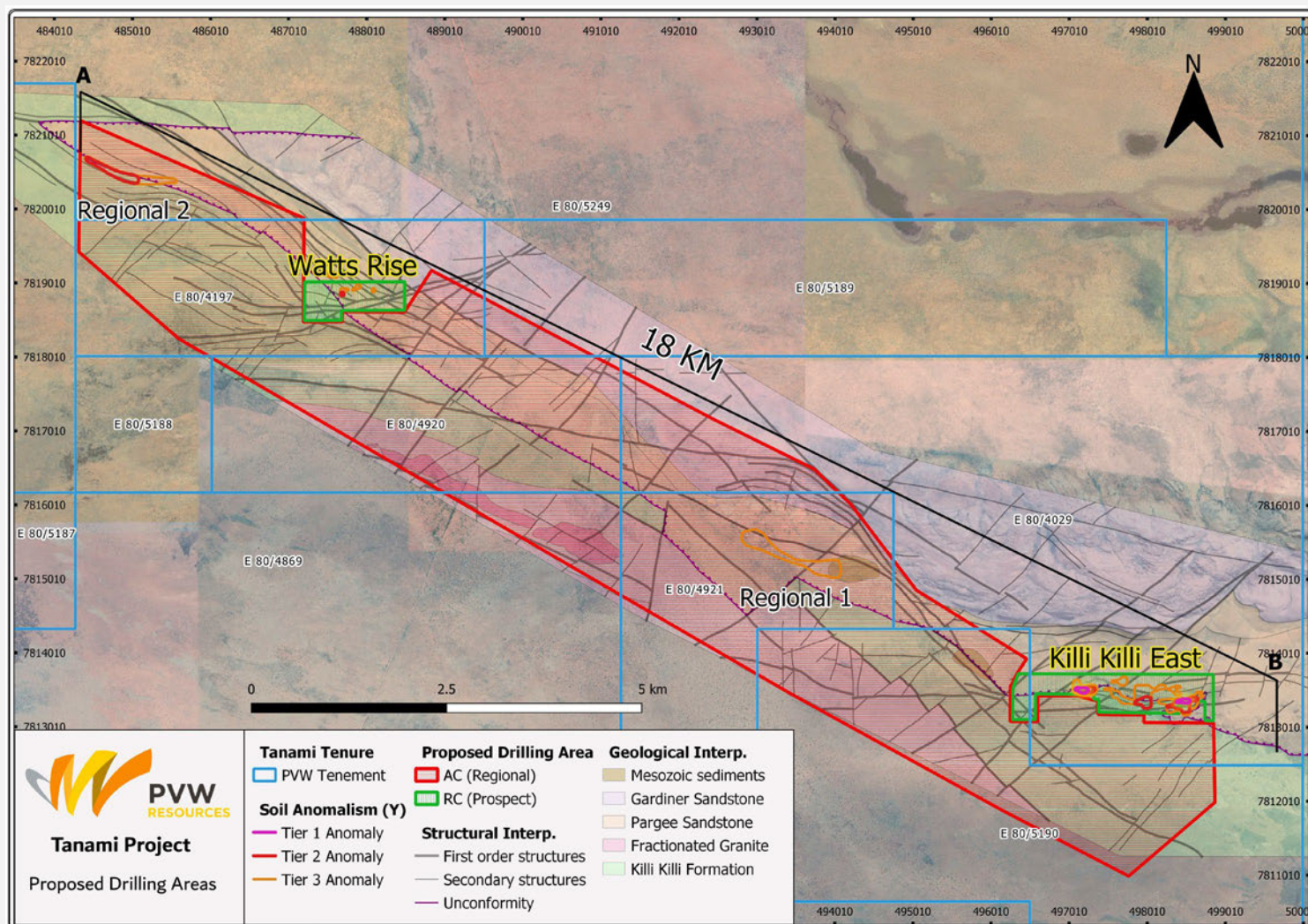


## Boots on the ground are paying off

- ▶ Rock chip and soil sampling, ground radiometrics, geological mapping and re-processing of airborne geophysics completed in second half of 2021.
- ▶ Rock chip assays up to **12.45% TREO** with 25 of 37 samples returning assays greater than 1% TREO.
- ▶ Four metallurgical samples of 20kg each return assays up to **8.45% TREO**.
- ▶ Rare earth mineralised samples at Killi Killi East located adjacent to a regional unconformity and predominantly hosted in the Pargee Sandstone.
- ▶ Drill target of 3km strike length outlined by soil sampling



# DRILLING TO COMMENCE IN JUNE QUARTER



## 2022 program

- ▶ Initial program of 10,000m RC and 25,000 aircore drilling
- ▶ First priority to be RC drilling at Killi Killi East and Watts Rise
- ▶ Regional targets to be tested by wide-spaced aircore drilling
- ▶ Planning to commence maiden drilling program in late April/May.
- ▶ Further ground reconnaissance on additional U/Th anomalies and structural targets.

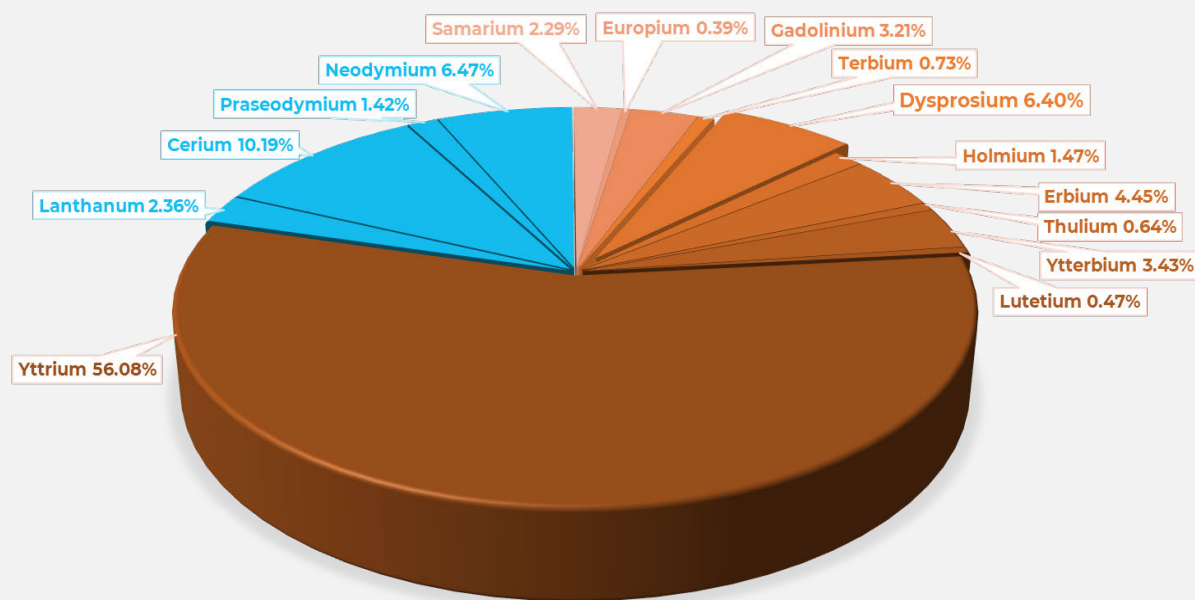


# IT'S XENOTIME!

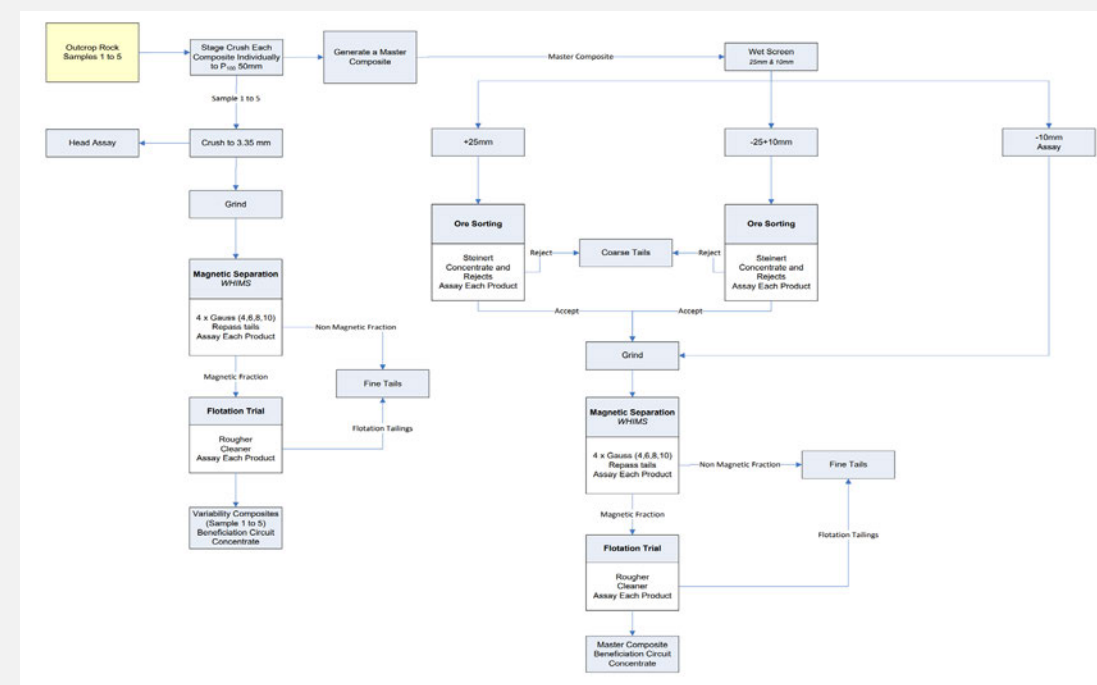
- ▶ Mineralogy study has confirmed heavy rare earths to be related to the rare earth mineral **xenotime** (similar to Northern Minerals Browns Range project, 80km north).
- ▶ Heavy rare earths comprise on average 80% of TREO for rock chip samples >1% TREO.
- ▶ IMO has **commenced sighter metallurgical testwork** on a 100kg bulk sample.



Northern Minerals Browns Range Pilot Plant (ASX:NTU) [www.northernminerals.com.au](http://www.northernminerals.com.au)



Pie chart showing average distribution of REO for all samples with TREO >1%







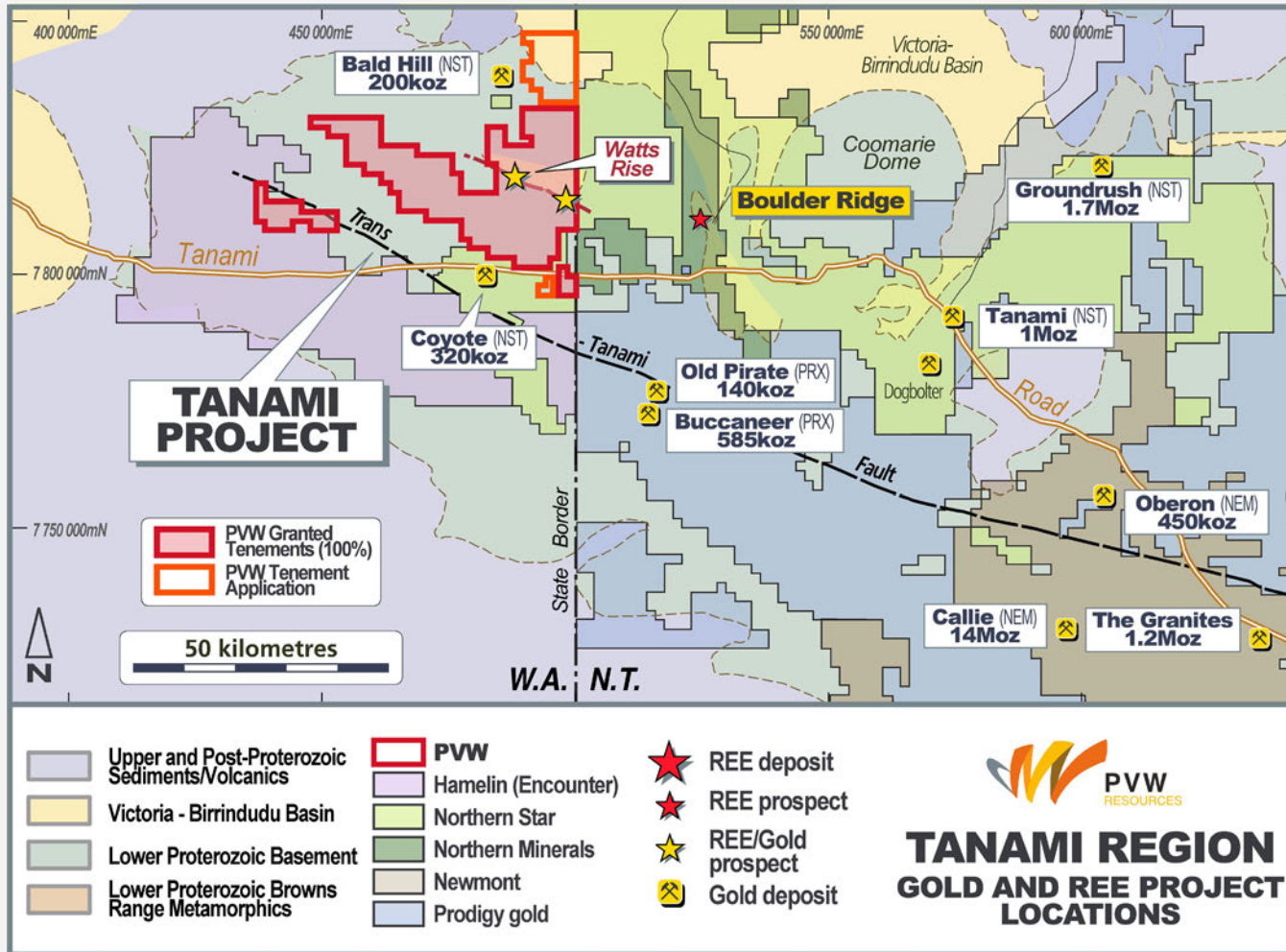
# TANAMI GOLD

Underexplored established gold province

PVW RESOURCES MARCH 2022



# TANAMI REGION – UNDEREXPLORED ESTABLISHED GOLD PROVINCE



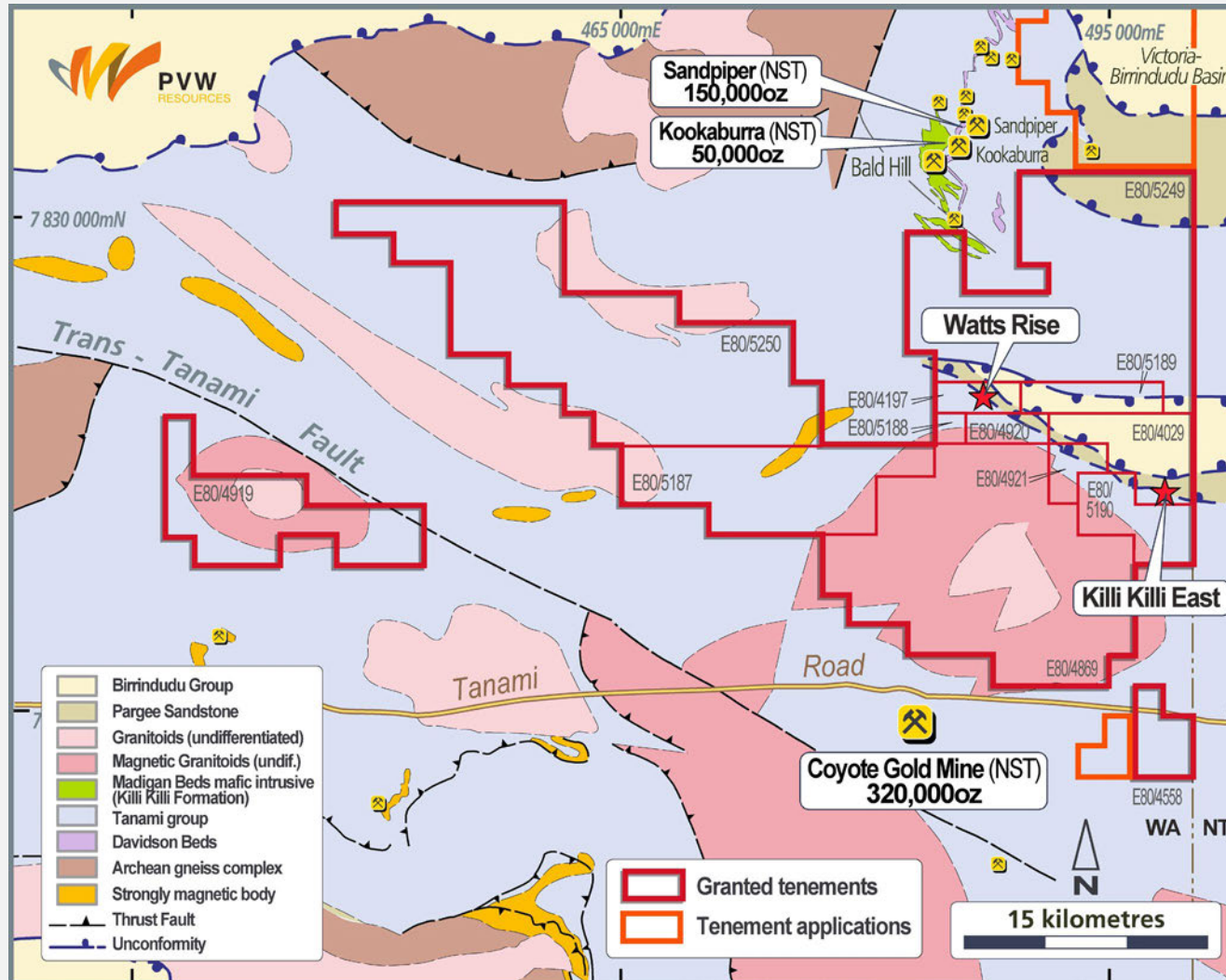
Callie gold deposit, Newmont (Reserve 33.2Mt @ 5.3g/t Au) is an example of potential within the Tanami. It is one of the most productive gold mines in Australia.

## Discoveries pending

- ▶ Modern explorers are active within the Tanami.
- ▶ PVW's tenure straddles some of the most prospective stratigraphy and structure. **Tenure recently increased by 40% with 4 new applications.**
- ▶ Major's have invested in exploration via earn-in for projects in the region.
- ▶ Region focus with Killi Resources and Hamelin Gold



# TANAMI – POISED FOR A NEW GOLD DISCOVERY



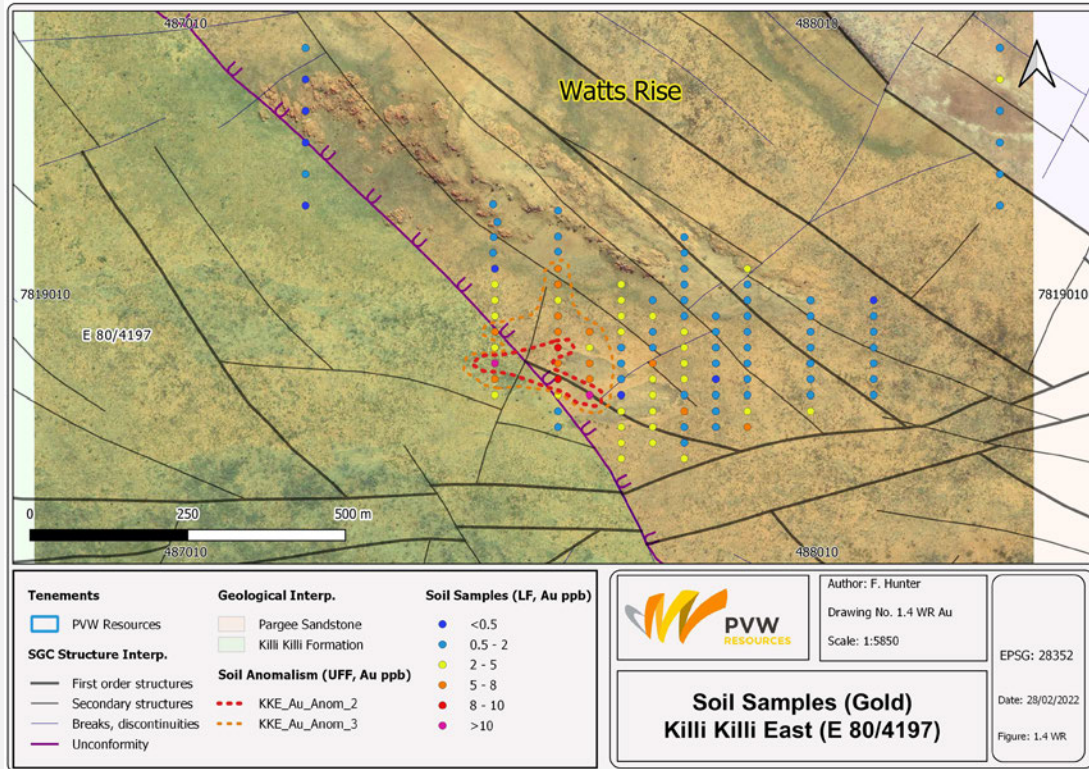
For reference to relevant historical data, Independent Geologists Report and Jungle Well Inferred Mineral Resource Estimate please refer to the **Prospectus, 15 Feb 2021**

## Limited and ineffective previous exploration

- ▶ Historic (2010-2012) RC drill intercepts at **Watts Rise**:
  - 12m @ 2.94g/t Au from surface
  - 12m @ 1.50g/t Au from 44m
  - 16m @ 2.48g/t Au from 60m
  - 5m @ 6.99g/t Au from surface
- ▶ **Watts Rise** - Au intercepts in RC drilling – open along strike and at depth never followed up by previous explorer.
- ▶ **Watts Rise** – Drill ready Au targets. Geochemical soil sampling completed, awaiting assay results.
- ▶ **Killi Killi East** – Recent Rock chip sampling, in addition to REE, also returned assays of **8.94 g/t and 4.43 g/t Au<sup>3</sup>**.

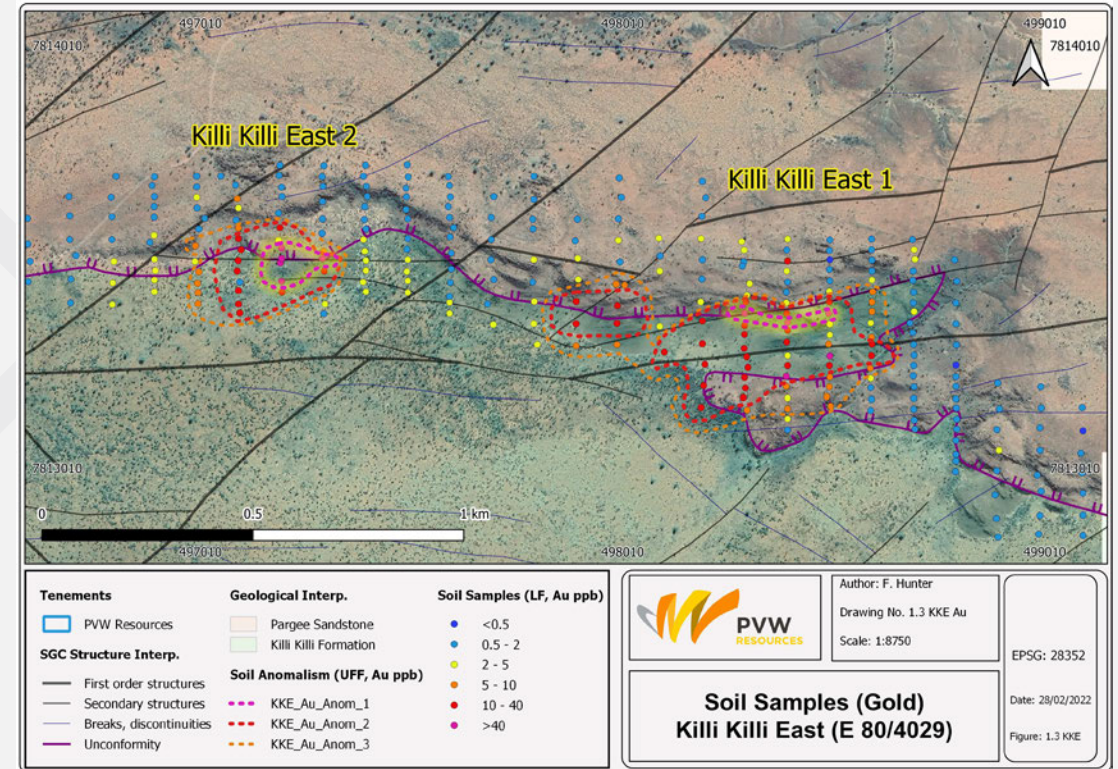
<sup>3</sup> ASX:PVW Announcement dated 13 Oct 2021, Confirmation of high-grade Heavy Rare Earths at Tanami Project (100%), Western Australia

# SOILS OUTLINE GOLD DRILL TARGETS



## Watts Rise

- ▶ Soil Au anomaly of 400m strike length and open to west
- ▶ Historic (2012) RC drill intersections never followed up



## Killi Killi East

- ▶ Rock chip samples of **8.94 g/t** and **4.43 g/t Au**
- ▶ Soil Au anomalies of 800m and 400m strike length





# KALGOORLIE

New ground, results and targets

---

PVW RESOURCES MARCH 2022



# KALGOORLIE – WORLD CLASS GOLD PROVINCE



## Positive Results and Growth

PVW have completed two transactions to increase the tenure by 50% to 150km<sup>2</sup>

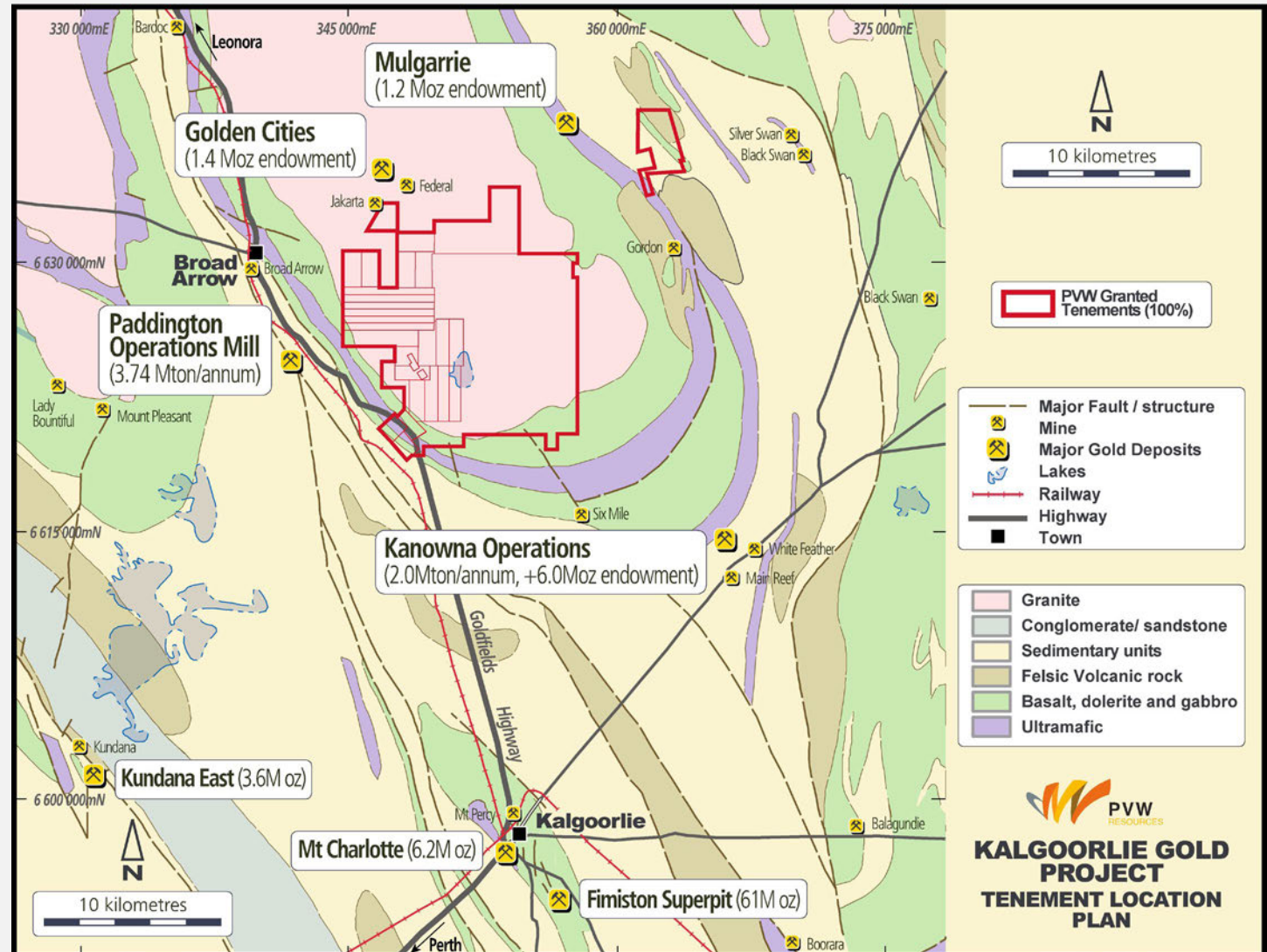
## Options – Paddington, Kanowna Belle Operations

Large operations adjacent to PVW tenure offer immediate processing options for new discoveries.

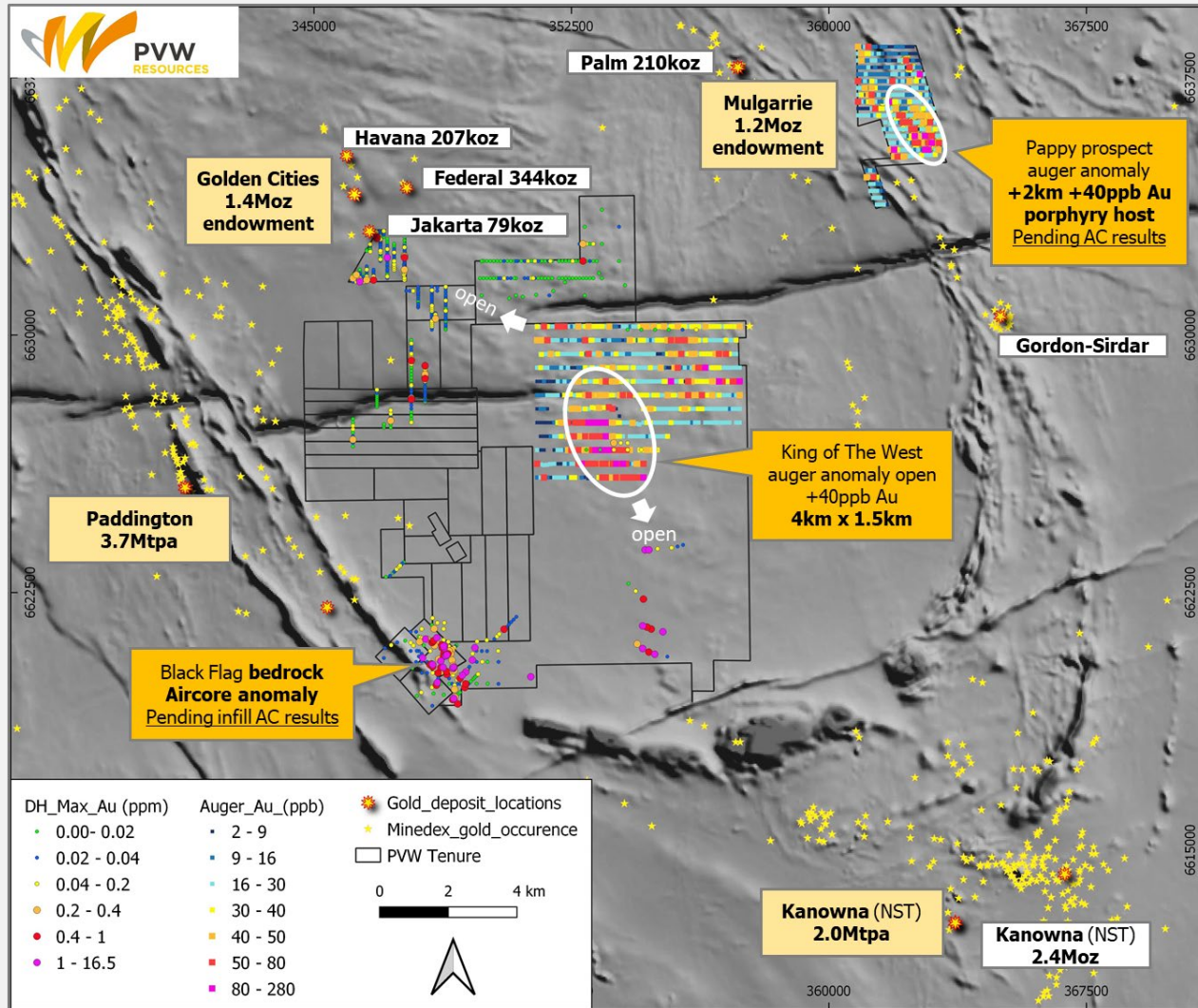
## Kalgoorlie Goldfields World Class

PVW is surrounded by large, long lived mining projects. Norton Gold Fields (NGF) are actively mining in the Federal, Havana and recently opened Jakarta open pit.

NGF Haul road's restored to allow commencement of mining at Mulgarrie. Yandal Resources (ASX:YRL) continue to explore with positive results.



# KALGOORLIE – WORLD CLASS GOLD PROVINCE



## Positive results and growth

Kalgoorlie is quickly becoming a priority exploration project for PVW.

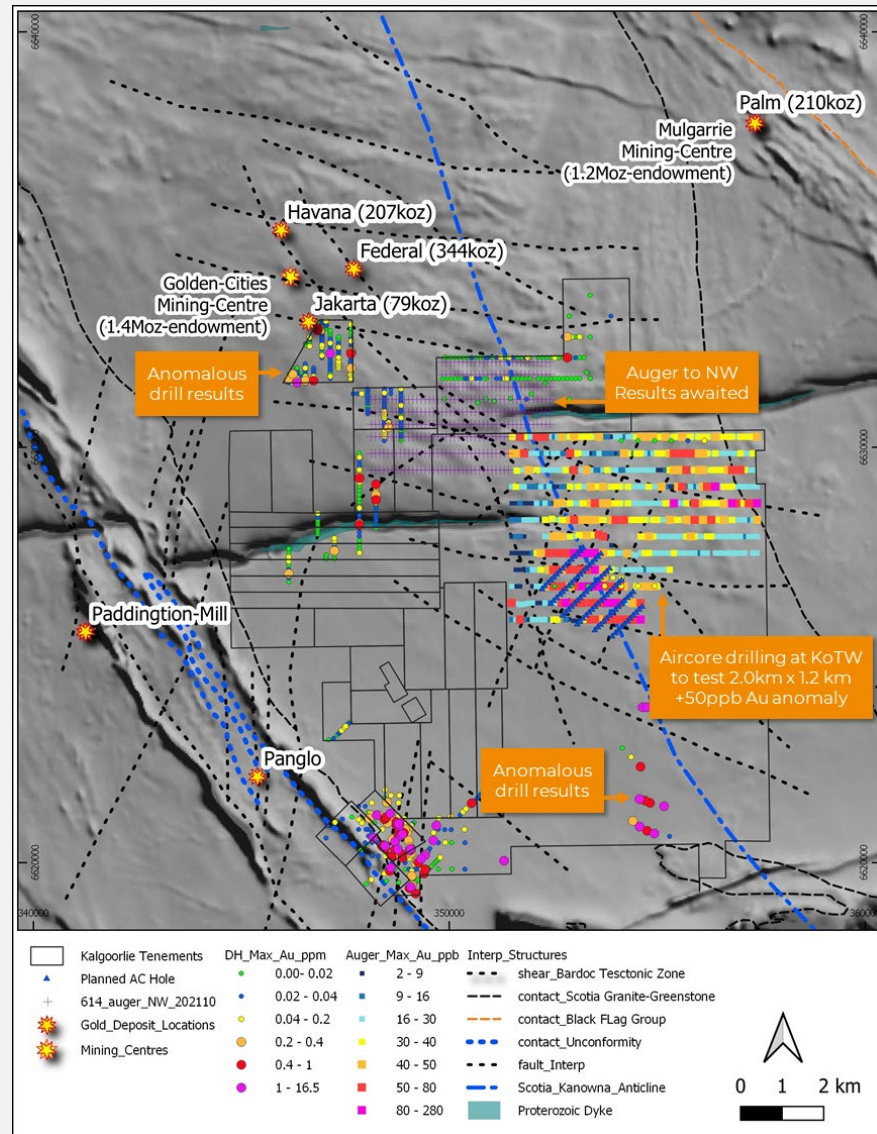
- ▶ **King of The West – 4km x 1.5 km +40ppb Au anomaly.** Significant anomaly with very minor drill testing. Auger extension to the NW and Aircore drilling required to test bedrock/paleochannel controls.
- ▶ **Pappy Prospect – 2km strike of +40ppb Au anomaly.** Porphyry host at sheared contact. Aircore drilling complete, results pending.
- ▶ **Black Flag –** Aircore drilling has confirmed +1g/t bedrock anomalism which requires follow up with deeper RC drilling. Aircore drilling, infill results pending.

## New ground along strike from Jakarta mining activities. Drill ready targets 2022

*For details please refer to announcement ASX:PVW 15 Nov 2021, Kalgoorlie – King of The West Auger Anomaly Extended*



# KALGOORLIE – KING OF THE WEST



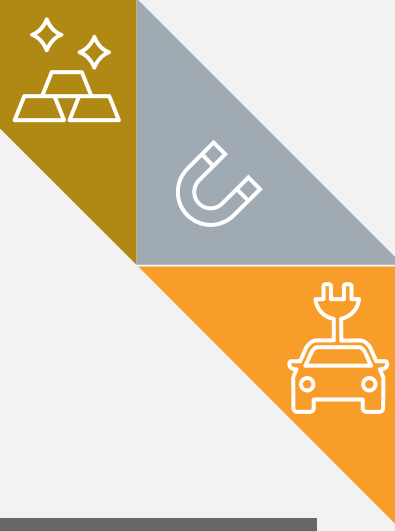
The main **King of The West** auger anomaly, a **+2.0km x 1.2km wide +50ppb Au zone** which remains **open to the south**, is being tested with Aircore drilling.

**Phase 1 Aircore drilling** is now completed, assays pending, which targeted the main +2.0km x 1.2km anomalous zone with 200m spaced holes on 400m spaced lines.

**Phase 2 Aircore** (proposed for mid-2022) will be prioritised to infill Phase 1 drilling and target other anomalous zones within the current auger coverage. Other targets will be prioritised as required along strike to the northwest and to the southeast within the Scotia – Kanowna Dome hinge zone, or where structure and host rocks are favourable.



# UPCOMING KEY ACTIVITIES



Project	Commodity	Activity	When
Leonora	Au	Jungle Well mineral resource estimate update	March
Kalgoorlie	Au	Pappy and Black Flag aircore results	March
Leonora	Au	Brilliant Well drilling results	March
Tanami	REE	Metallurgical test work results	March
Tanami	REE	Drilling to commence	April
Tanami	Au	Drilling to commence	April
Kalgoorlie	Au	King of The West drilling results	April

# PVW – POSITIONED FOR SUCCESS

- ▶ Tanami Heavy REE project has potential to be a **company-making, globally significant discovery**.
- ▶ Board and management team with first-hand experience taking a greenfields REE discovery through to production, **ready to do it again, differently**.
- ▶ Outstanding strategic land positions in **three world class gold-producing provinces**, Tanami, Kalgoorlie and Leonora.







**PVW**  
Resources

**THANK YOU**



**Scan here to join  
our mailing list**

**PVW Resources Limited**

Level 3, 1138 Hay Street  
West Perth WA, 6005

PO Box 300  
West Perth WA, 6872

**Contacts**

**George Bauk**

T: +61 (0)408 931 746

E: [george@totode.com.au](mailto:george@totode.com.au)

**Karl Weber**

T: +61 (0)448 845 507

E: [karl.weber@pvwresources.com.au](mailto:karl.weber@pvwresources.com.au)

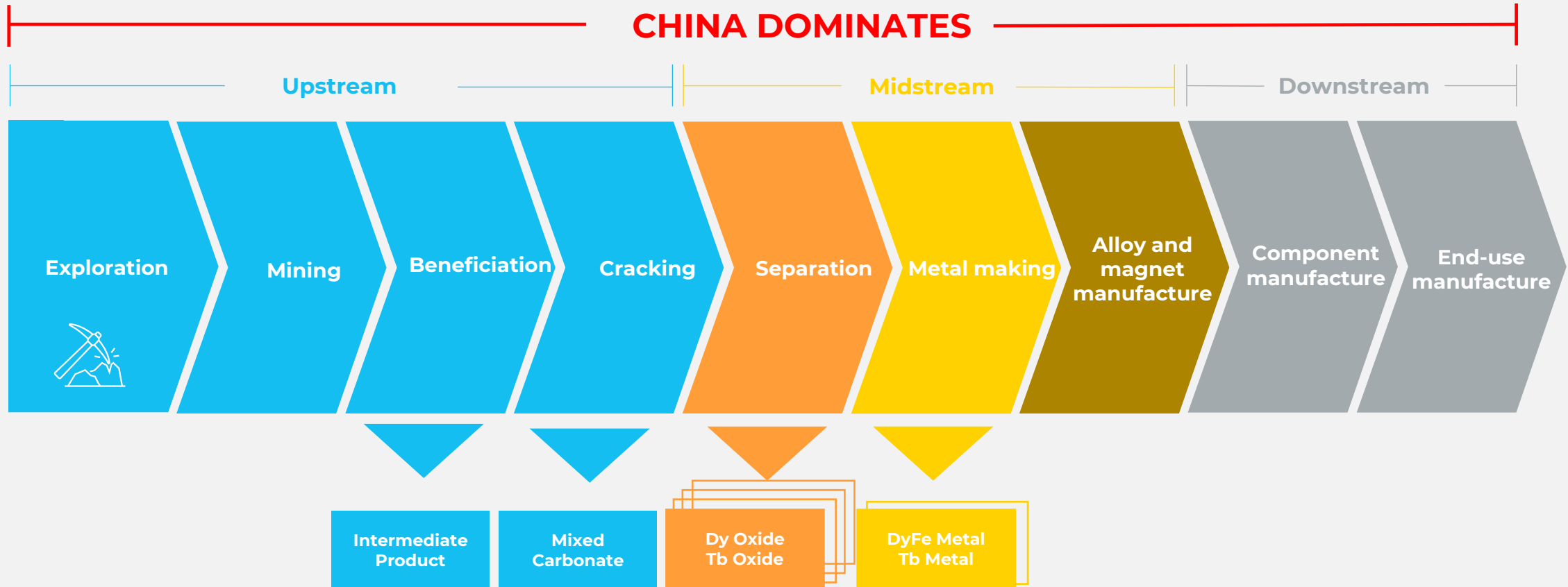
**[pvwresources.com.au](http://pvwresources.com.au)**





# APPENDICES

# PERMANENT MAGNET SUPPLY CHAIN







# EARLY-STAGE SIMILARITY TO NORTHERN MINERALS JOURNEY, EXPLORATION THE KEY TO UNLOCK VALUE



Rock Chip  
Samples  
**Oct 2021**

Mineralogy  
**Dec 2021**

Sighter  
Met Testwork  
commenced  
**Dec 2021**

Exploration 2022



Rock Chip  
Samples  
**Dec 2009**

Mineralogy  
**Oct 2010**

Sighter  
Met Testwork  
completed  
**Dec 2010**

Maiden  
Resource  
10,500t TREO  
**Dec 2012**

Revised  
Resource  
56,663t TREO  
**Feb 2015**

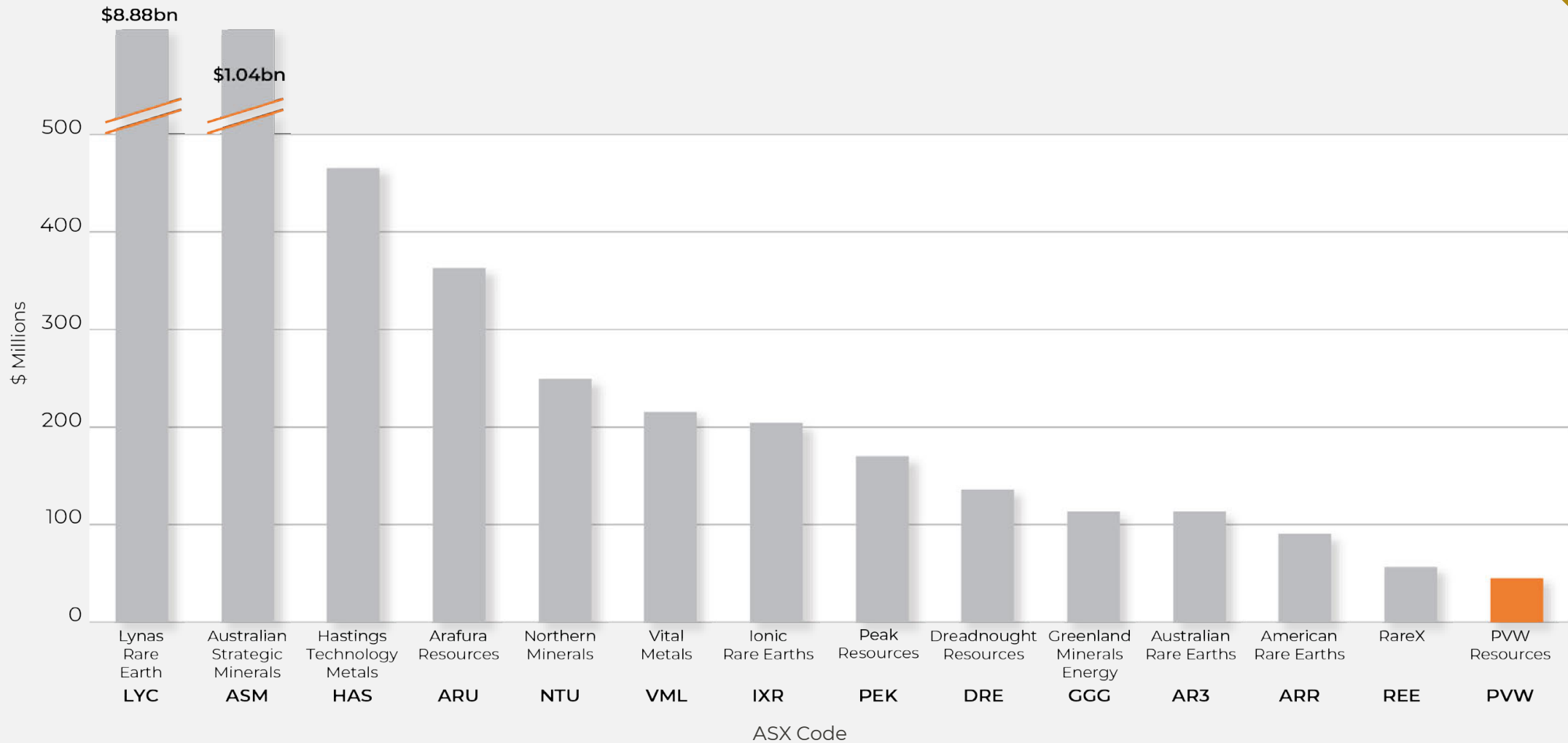
Sold First HRE  
Carbonate from  
Pilot Plant  
**Dec 2018**

- ▶ IMO has commenced sighter metallurgical testwork on a 100kg bulk sample.
- ▶ Test work to focus on ore sorting and the beneficiation stage to understand upgradability and recovery.
- ▶ Provide information on the comparability to the Northern Minerals Browns Range Project.



Northern Minerals Browns Range  
Pilot Plant (ASX:NTU)  
[www.northernminerals.com.au](http://www.northernminerals.com.au)

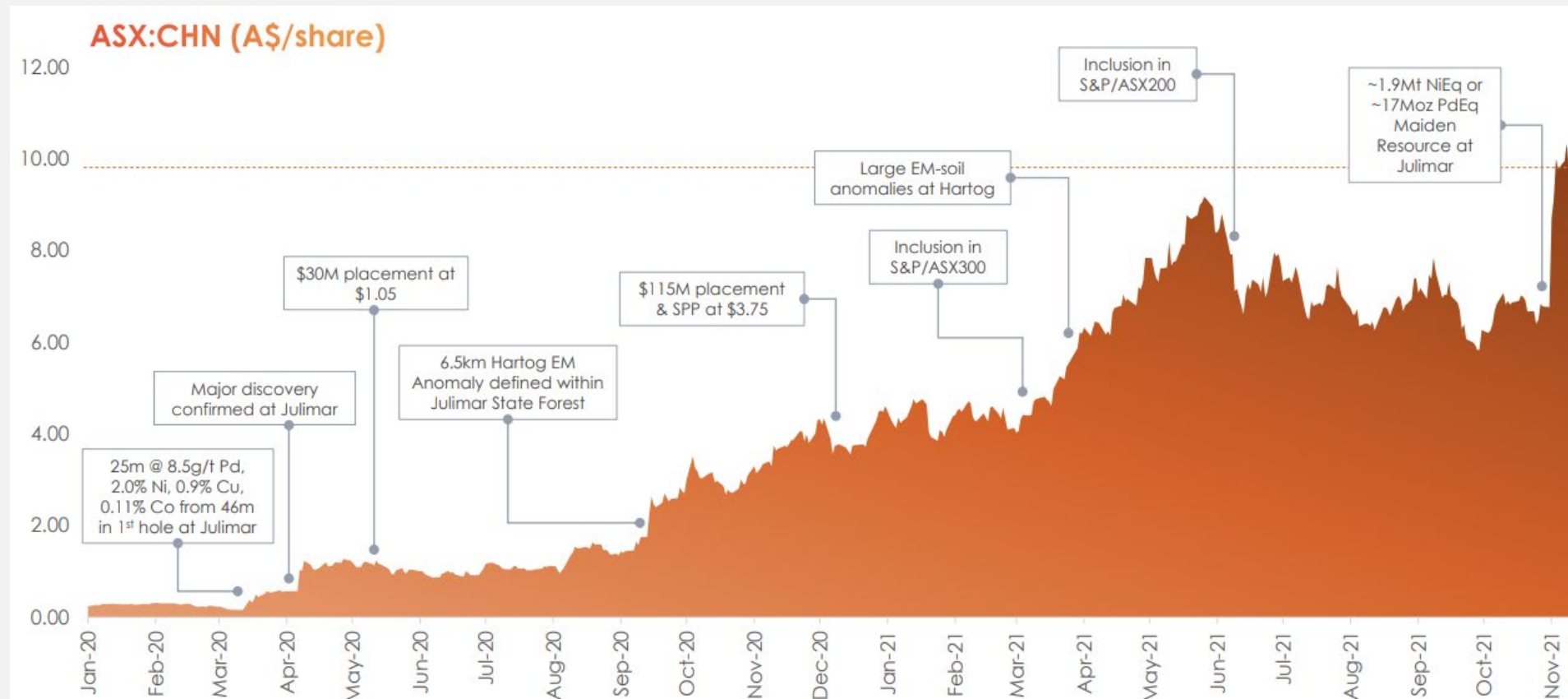
# RARE EARTH COMPANIES – MARKET CAPITALISATIONS



Based on Market Capitalisations, 17 Mar 2022



# CASE STUDY: CHALICE MINING (ASX:CHN) STARTED WITH A PORTFOLIO OF EXPLORATION ASSETS IN TIER 1 LOCATIONS AND ARE NOW A >A\$3BN COMPANY



- ✓ Exploring for Tier 1 scale discoveries in frontier areas
- ✓ Tight Capital Structure
- ✓ Targeting big discoveries in underexplored provinces in Australia
- ✓ Chalice strategy is to systematically acquire and explore in premier terranes; aiming to address the rapid decline in tier-1 scale discoveries worldwide

Source: ASX:CHN Investor Presentation – December 2019 (3 December 2019)

Source: ASX:CHN AGM Address and Presentation (24 November 2021)

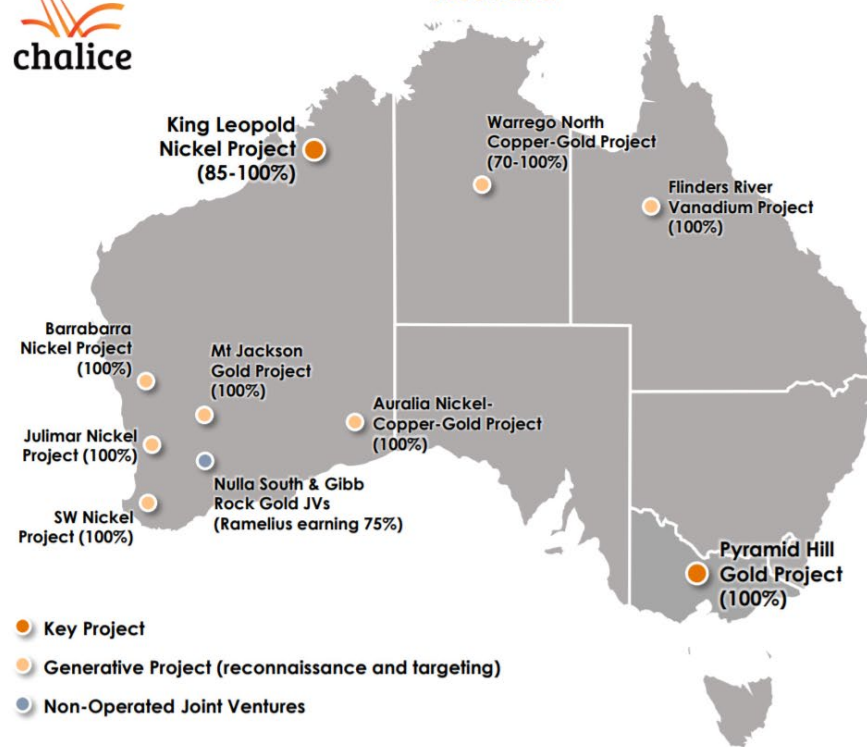
# CASE STUDY: CHALICE MINING (ASX:CHN) JULIMAR WAS A PROJECT IN THE APPENDIX OF THEIR PRESENTATION – DEC 2019



Chalice's portfolio also includes several generative exploration opportunities, non-operated JVs, royalties and investments



## Australia



### Royalties

- Nyanzaga, Tanzania – **A\$5 million** payment receivable upon commercial production from Orecorp Limited (ASX: ORR)
- East Cadillac, Quebec – **1.0% NSR** partial
- Kinebik, Quebec – **1.0% NSR**
- Ardeen, Ontario – **0.12-1.0% NSR** partial
- Cameron, Ontario – **1.0% NSR** partial
- Jericho, WA – 1.0% NSR
- Bunjarra Well, WA – 1.0% NSR
- Kurrajong Bore, WA – 1.25% NSR

### Strategic Investments

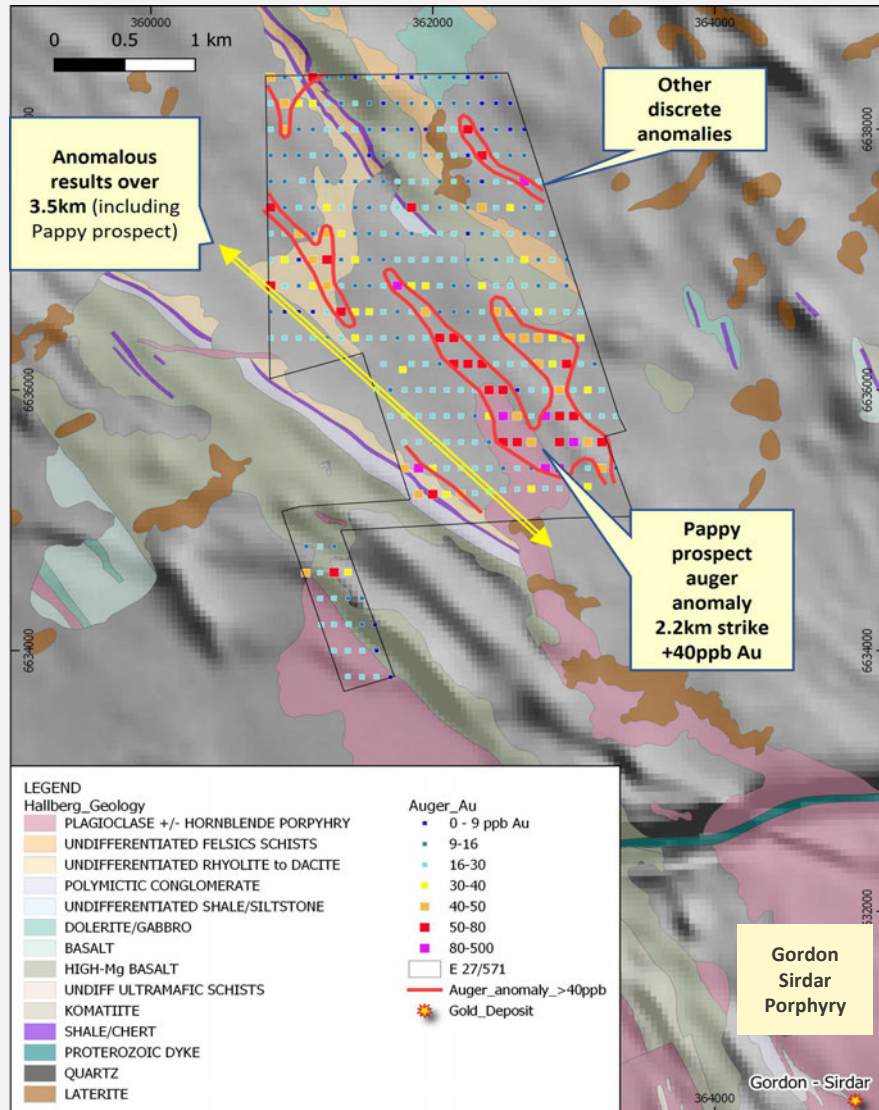
- **~3.1M shares (~7%)** in O3 Mining Inc. (TVX: OIII)
- **~97M shares (~7%)** in Spectrum Metals (ASX: SPX)

21

Source:ASX:CHN AGM Address and Presentation (24 November 2021)



# KALGOORLIE – PAPPY PROSPECT EXPLORATION



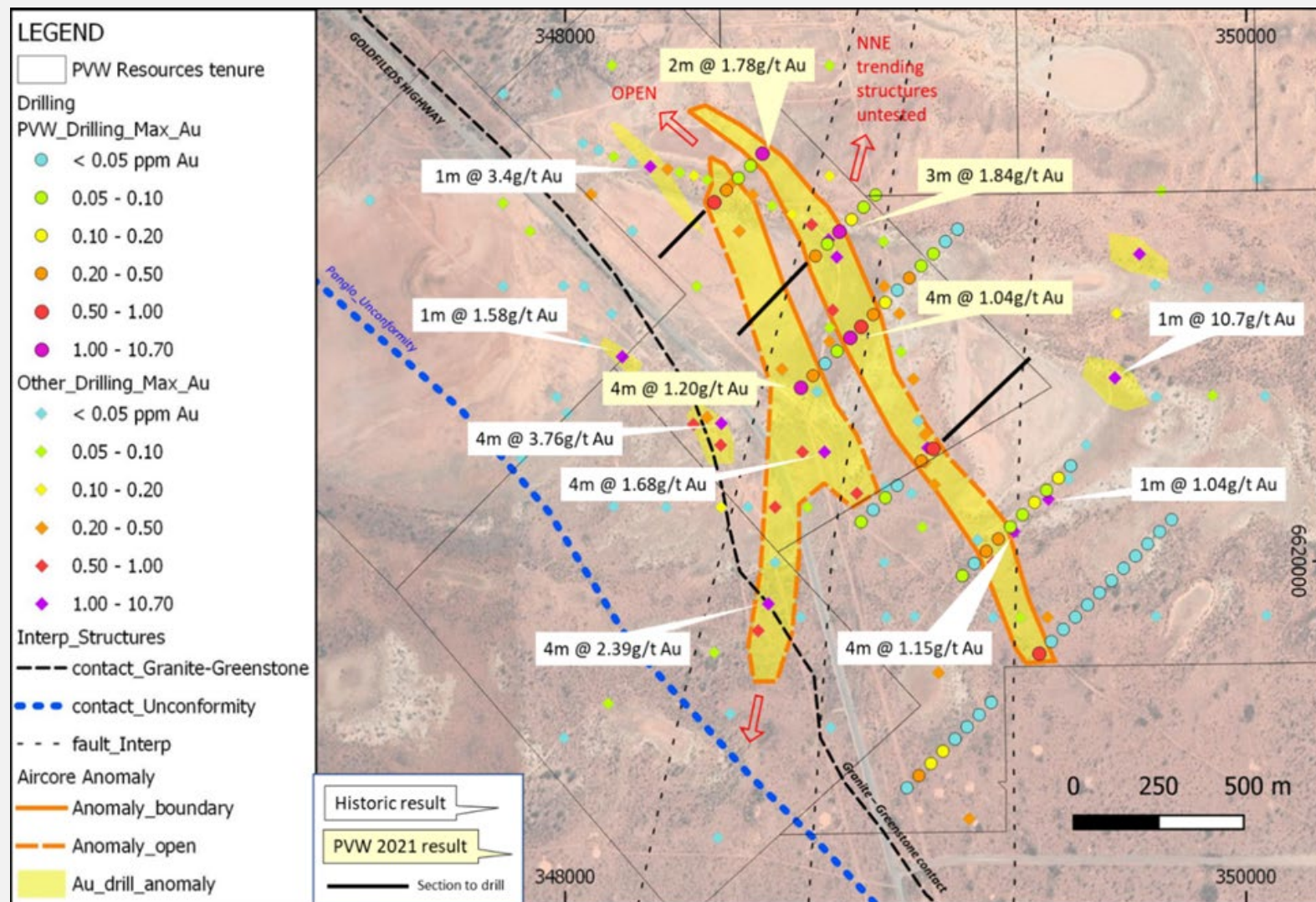
## Pappy Prospect

- ▶ 3.5km strike of anomalous results returned from auger on the northwest trend.
- ▶ **246ppb** Au peak over intersection of two magnetic units and mapped porphyry intrusives, numerous +80ppb Au samples.
  - Continuation of the Plagioclase/ Hornblende Porphyry from Gordon Sirdar gold mine into E27/571.
  - The Pappy Prospect **2.2km strike of +40ppb Au.**
  - Coincident with a magnetic low at the interpreted boundary between intrusive Plagioclase / Hornblende Porphyry and Felsic volcanic lithologies.

Aircore drilling has been completed to test the main Pappy auger anomaly – results pending



# KALGOORLIE – BLACK FLAG PROJECT ADVANCING



## Black Flag Prospect Aircore confirms bedrock Au anomaly

- 21BFAC043, 3m @ 1.84g/t Au, from 45m
- 21BFAC031, 4m @ 1.04g/t Au, from 40m
- 21BFAC027, 4m @ 1.20g/t Au, from 60m
- 21BFAC051, 7m @ 0.88g/t Au, from 43m

including 2m @ 1.78g/t Au, from 43m

- ▶ +1g/t intercepts associated with quartz veining, sulphides or iron-oxide after sulphides within weathered bedrock.
- ▶ North-south structure observed in the magnetics.

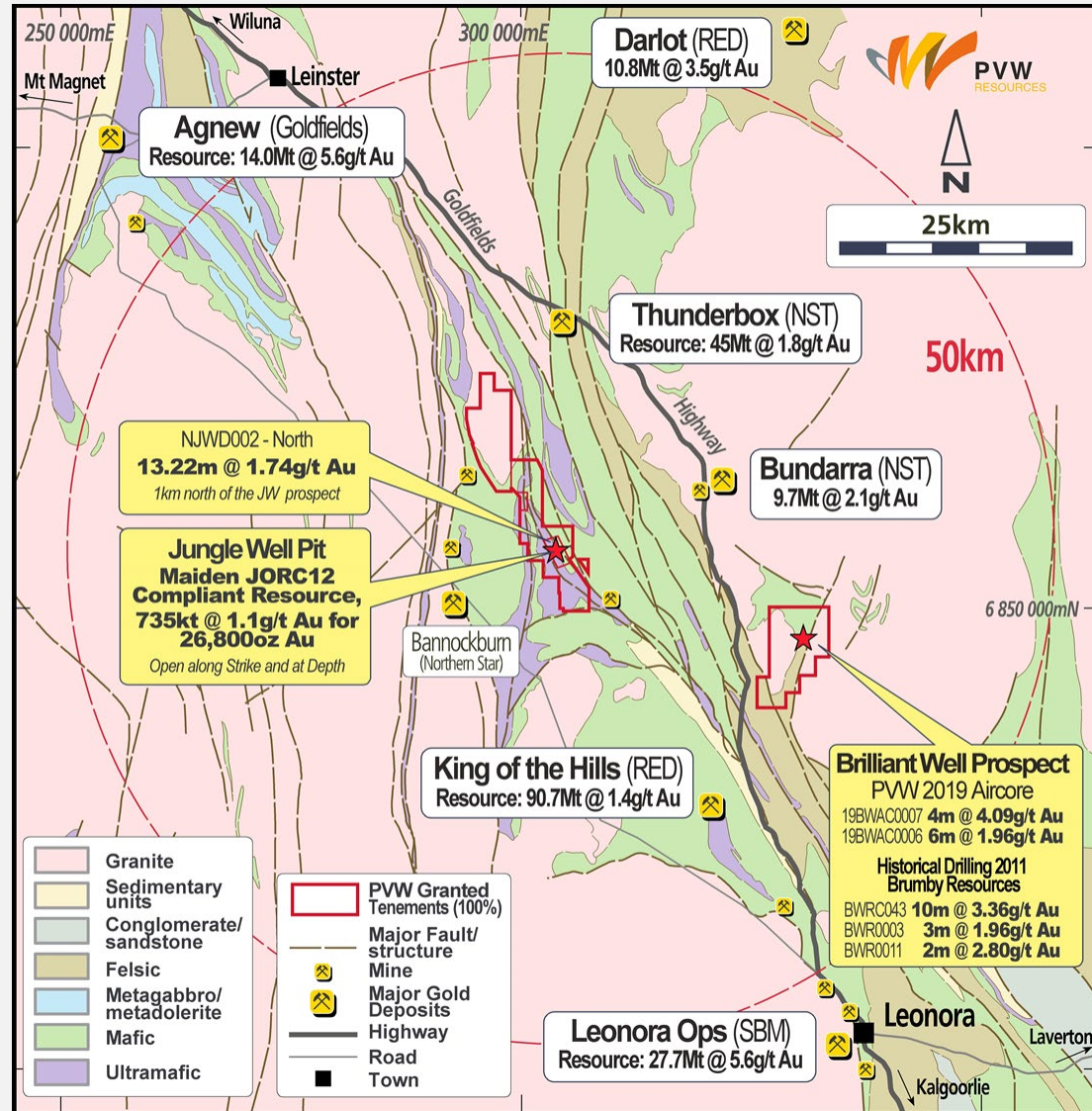




# LEONORA

Opportunities to grow and discover

# LEONORA – WORLD CLASS GOLD PROVINCE



**Regionally Au production of +15 Moz**

**Three current gold processing operations within 50km of project:**

**Red 5 (ASX:RED)**

**Northern Star Resources (ASX:NST)**

**St Barbara (ASX:SBM)**

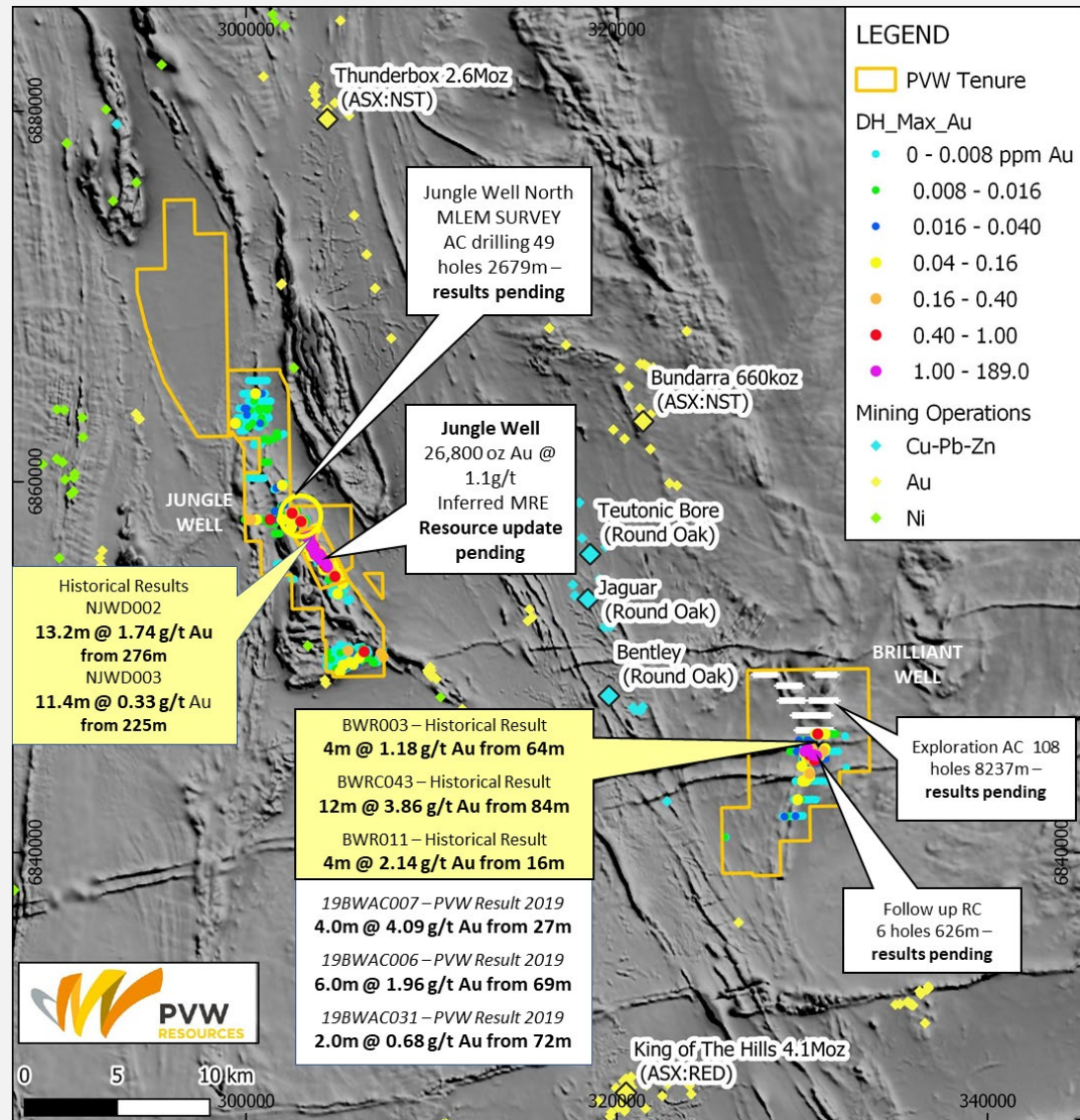
**The Leonora region hosts several high-grade gold mines.**

Drilling results are pending to build on a highly prospective exploration package.

Active explorers in the area include: **Northern Star Resources, Kin Mining, Red 5 and St Barbara.**



# LEONORA – SIGNIFICANT UPSIDE



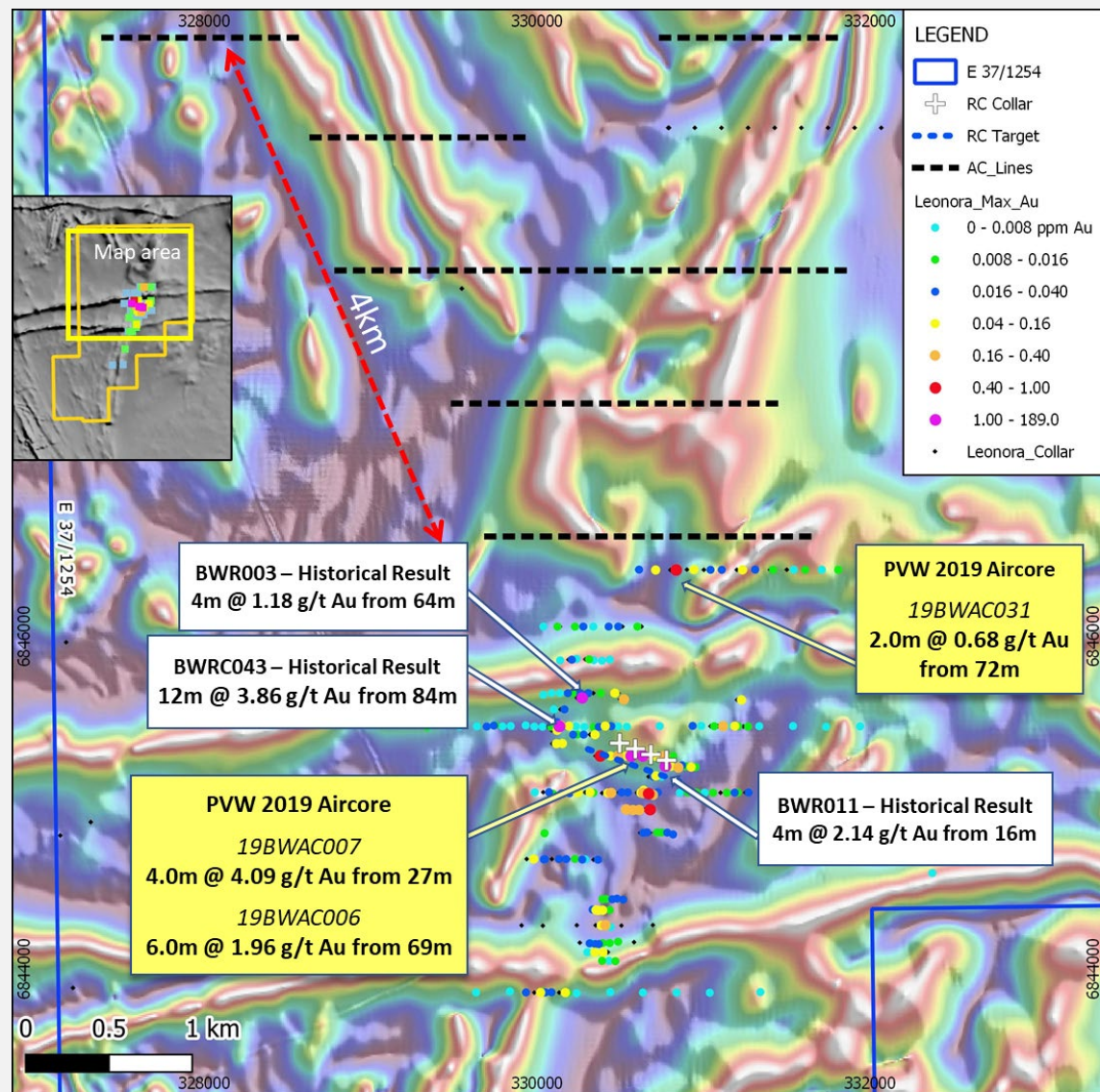
## Brilliant Well Project, significant upside along underexplored greenstone belt.

- ▶ Brilliant Well Project – Regional Aircore and targeted RC. **Results pending.**

## Jungle Well – continuous tenure over ~15km strike

- ▶ Jungle Well – open along strike and down dip.
- ▶ Two kilometres of near surface anomalism north of the Jungle Well Resource.
- ▶ Jungle Well Regional – targets North and South, under explored, shallow drilling, previously Nickel focussed exploration.
- ▶ Deep historical results
  - **13.2m @ 1.74g/t Au from 276m**
- ▶ Nugget patch identified – requires field confirmation prior to drilling.

# LEONORA – BRILLIANT WELL TARGETS



Brilliant Well – untested tenure over 4km north of Au anomaly

## Historical drill results:

- ▶ **12m @ 3.86g/t Au** from 84m
- ▶ 4m @ 1.18g/t Au from 64m
- ▶ 4m @ 2.14g/t Au from 16m

## PVW 2019 Aircore results:

- ▶ **4m @ 4.09g/t Au** from 27m
- ▶ **6m @ 1.96g/t Au** from 69m
- ▶ 2.0m @ 0.68g/t Au from 72m

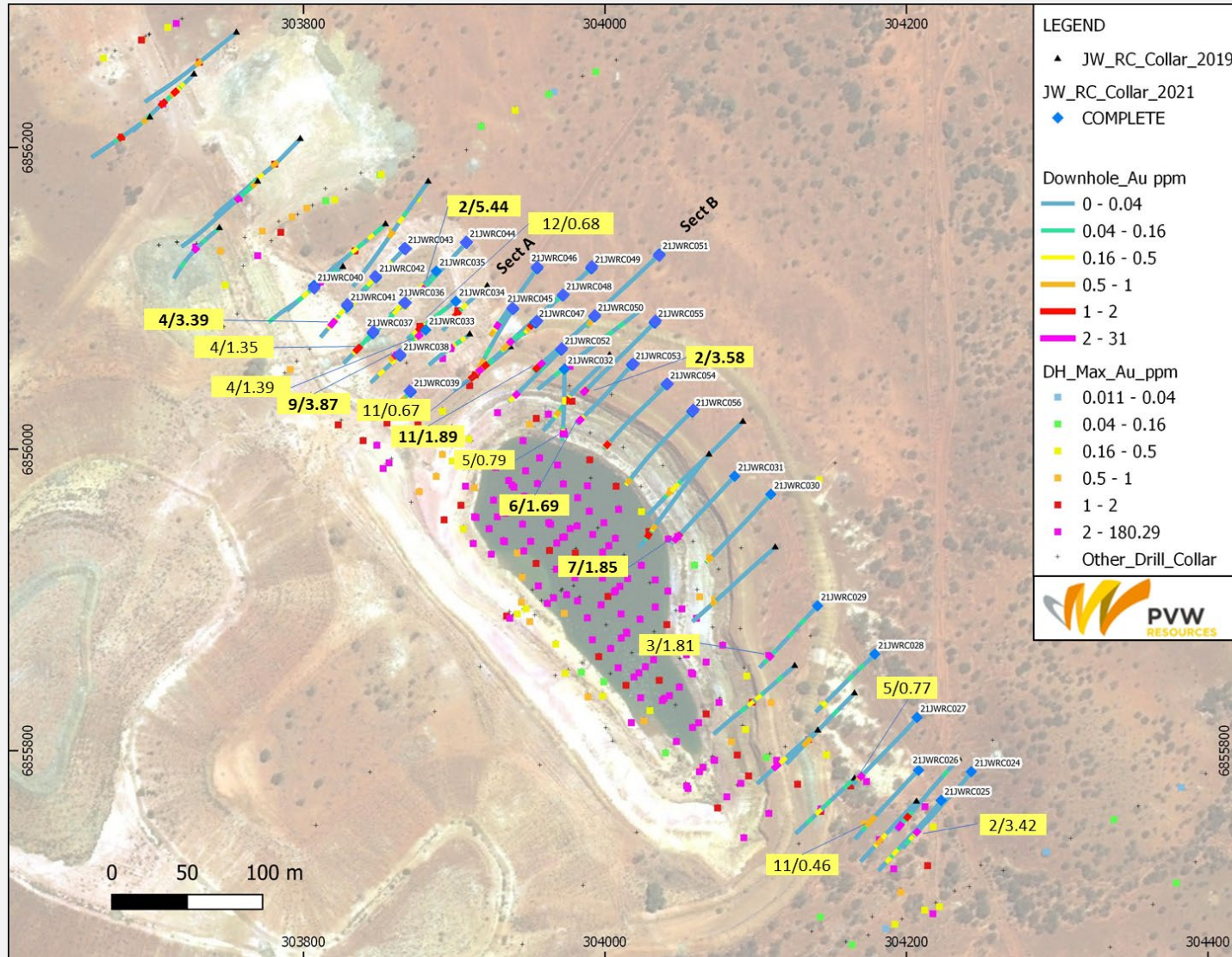
## PVW 2021 drilling (results pending):

- ▶ 108 holes 8,237m of Aircore to test 4km of strike on two trends north of anomalous gold results in drilling.
- ▶ 6 holes 626m of RC to test WNW trend of previous results, drilling has intersected vein, sulphides and shearing consistent with previous drilling.

*For details please refer to announcement ASX:PVW, 28 Jun 2021, Leonora – Brilliant Well Exploration Drilling Underway*



# JUNGLE WELL – RESOURCE DRILLING

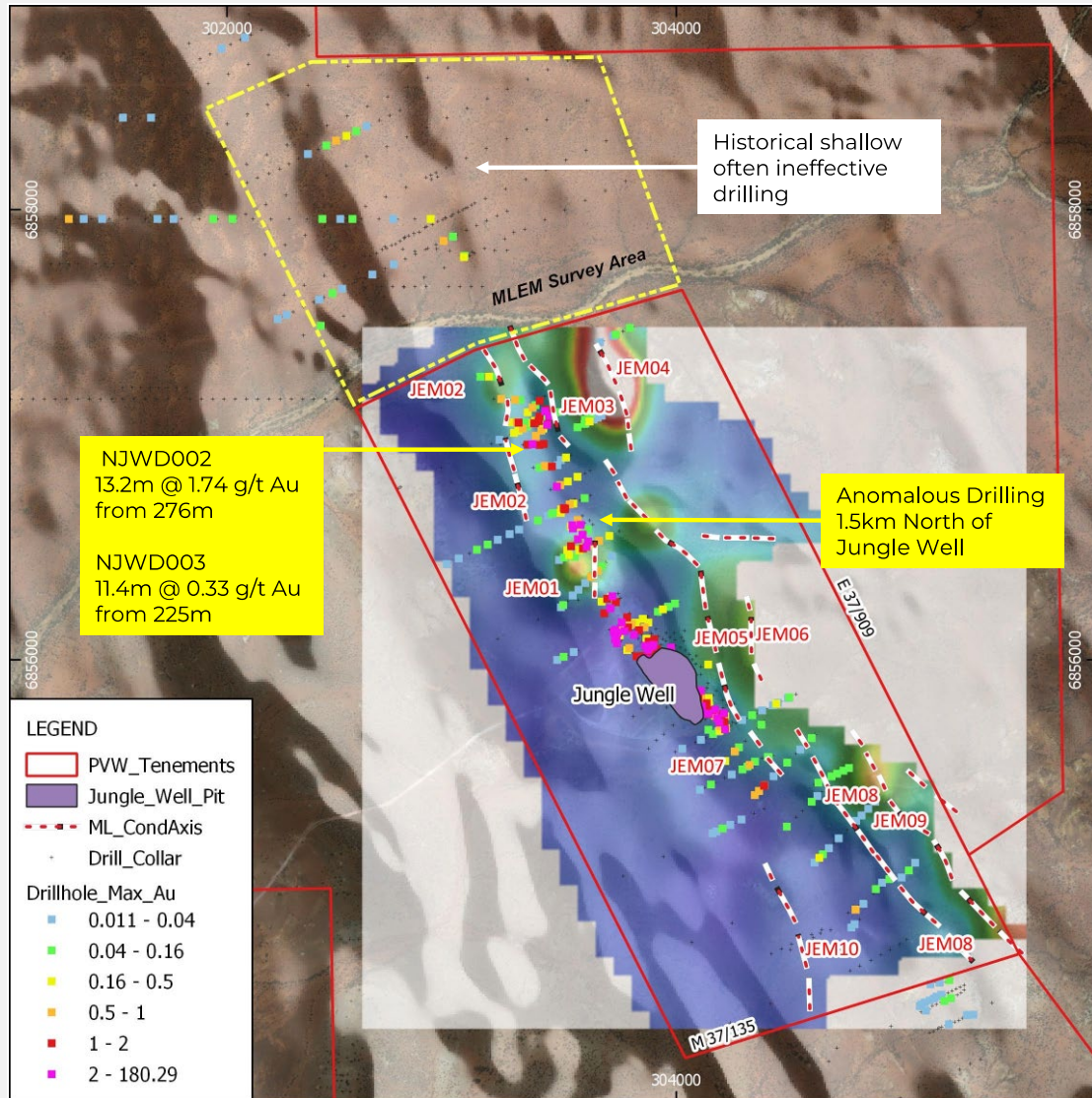


## Jungle Well Resource – continual improvement

- November 2019 Inferred MRE
  - 26,800oz Au @ 1.1g/t
- 2021 RC drilling 33 holes 2,890m
  - **Open** along strike.
  - **Open** plunge to the north confirmed.
  - **Shallow** oxide mineralisation confirmed.
  - Metallurgical testwork for Heap Leach is being assessed. Fremantle Metallurgical have undertaken column tests and agglomeration tests.
- Pit optimisation will follow metallurgical test work.
- Updated Mineral Resources Estimate planned for Q4.



# JUNGLE WELL NORTH – EXPLORATION



## Jungle Well North – open for interpretation

Southern Geoscience Consulting (SGC) have completed the ground MLEM survey north of Jungle Well. Image interpretation underway. Aircore completed to follow up drilling and historical MLEM trends

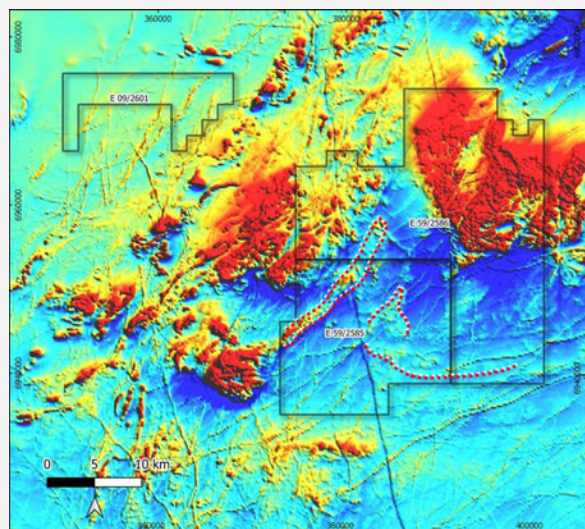
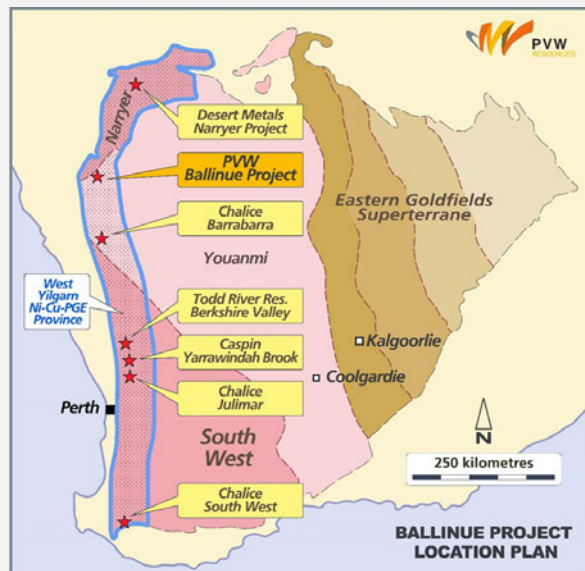
- ▶ Target extension of historical conductors that are considered prospective for gold mineralisation (and base metals).
- ▶ The potential for Gold mineralisation demonstrated by previous exploration diamond drilling (testing a strong conductor for Nickel mineralisation) returning significant intersections:
  - **NJWD002 13.2m @ 1.74g/t Au from 276m**
  - **NJWD003 11.4m @ 0.33g.t Au from 225m**

**Shallow, anomalous results in drilling north of Jungle Well**

- ▶ require follow up at depth.



# BALLINUE – NI-CU-PGE PROJECT



PVW has made three exploration licence applications in the highly prospective West Yilgarn **Ni-Cu-PGE** Province.

- ▶ This area was target following continued success by numerous explorers such as Chalice Mining, Pursuit Minerals, Caspin Resources, Todd River Resources and Desert Metals.
- ▶ Following appraisal of numerous projects and available areas, tenement applications are in place for three large exploration licenses (E59/2585, E59/2586 and E09/2601) covering an area of 950km<sup>2</sup>.
- ▶ Data compilation and review of available datasets in underway. Field appraisal and assessment of magnetics to commenced in February.

Previously released ASX material references that relate to PVW Ballinue include:  
8 July 2021, PVW Expanding into West Yilgarn Ni-Cu-PGE Province