

13 July 2018

Drilling hits wide visible copper mineralisation 850m along strike from the high-grade Zackly Resource- Revised Release

Plus, visible gold intersected 300m along strike of the existing Resource

PolarX Limited (ASX: PXX) is pleased to announce strong results from the initial holes of the new drilling program at the Zackly copper-gold deposit within its Alaska Range Project.

The drilling has intersected a **55m down-hole width** of visible copper oxide mineralisation 850m along strike to the east of the current Resource at Zackly and visible gold mineralisation 300m to the east of the Resource (Figures 1,2 and 3).



Figure 1. Visible copper oxides in hole ZX-18020, 56.67 to 57.00m down-hole depth (scale bar = 10cm)



Figure 2. Visible 0.5mm gold grain

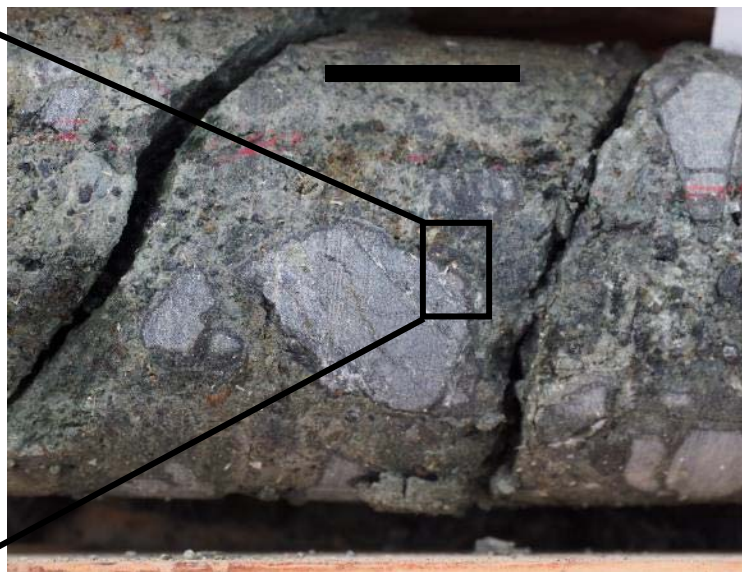


Figure 3. Mineralised breccia with visible gold ZX-18016, 100.5m (bar=25mm)

The current Zackly Inferred Resource stands at 41,000t of copper, 213,000oz of gold and 1.5Moz silver from surface (refer Table 1). It occurs over a strike length of 1km.

Zackly remains open at depth and along strike in both directions.

The current drill program comprises up to 25 holes for a total of approximately 5,000m of core drilling designed to substantially extend the Zackly resource both along-strike and down-dip. Six holes have been collared to date (see Table 2).

55m BROAD INTERCEPT CONTAINING COPPER OXIDES FROM SURFACE

Strong, visible copper oxide mineralisation was seen in hole ZX-18020 commencing near the surface immediately below 2.5m of transported over-burden. This forms a broadly mineralised zone with variable amounts of copper oxides extending from 2.50m to 57.14m down-hole depth (Figure 5 and 6). ***This wide, new drill intersection is approximately 850m to the east of the current inferred resource at Zackly*** (Figure 4).

This mineralisation is hosted within garnet bearing skarn alteration. Copper mineralisation occurs in veins, fractures, interstitial to grains, as native copper flecks and silicified chalcocite with variation in intensity throughout each mineralised zone as follows:

From (m)	To (m)	Mineralisation	% Mineralisation
2.50	24.95	Malachite, chalcocite, chrysocolla, native copper	0.1% to 1.5%
24.95	32.80	Malachite, chalcocite, bornite, chrysocolla	0.25% to 25%
32.80	33.70	No visible copper minerals	Fault gouge
33.70	36.14	Malachite, chrysocolla	0.4% to 6%
36.14	38.55	No visible copper minerals	
38.55	43.40	Malachite, chrysocolla, chalcocite	0.5% to 30%
43.40	50.40	Native copper, malachite, chrysocolla	0.1% to 1%
50.40	53.65	No visible copper minerals	
53.65	57.14	Chalcopyrite, chalcocite, malachite, chrysocolla	0.5% to 40%

In relation to the disclosure of visual mineralisation, the Company cautions that visual estimates of sulphide and oxide material abundance should never be considered a proxy or substitute for laboratory analysis. Laboratory assay results are required to determine the widths and grade of the visible mineralisation reported in preliminary geological logging. The Company will update the market when laboratory analytical results become available.

VISIBLE GOLD

Visible gold mineralisation was seen in the first hole drilled, ZX-18016. This hole is 300m to the east of the current inferred resource at Zackly.

The mineralisation was visible from 100.5m down-hole depth within a chloritized mineralised breccia zone which is approximately 0.9m thick (true-thickness approx. 0.5m).

Both these new holes also extend the known mineralisation towards the prominent magnetic feature at Zackly SE, which could be the porphyry source of mineralisation found to date (Figure 7).

Hole ZX-18018 is currently being drilled to test the deeper down dip continuation of the inferred resource, approximately 100m below the nearest up-dip hole (see Figure 4). A new hole (ZX-18021) is also now being collared to drill below the new copper oxide intersection in hole ZX-18020.



Figure 4. Drill hole plan for Zackly showing the 2017 surface trace of PolarX's inferred resource outline (red) and the initial 2018 drill holes collared to date (yellow) on detailed drone imagery.



Figure 5. Intense copper oxide, mainly malachite in hole ZX-18020 pictured at a down-hole depth of 56.9m



Figure 6. Visible copper oxide mineralisation in drill hole ZX-18020 in strong garnet skarn alteration nearer surface.

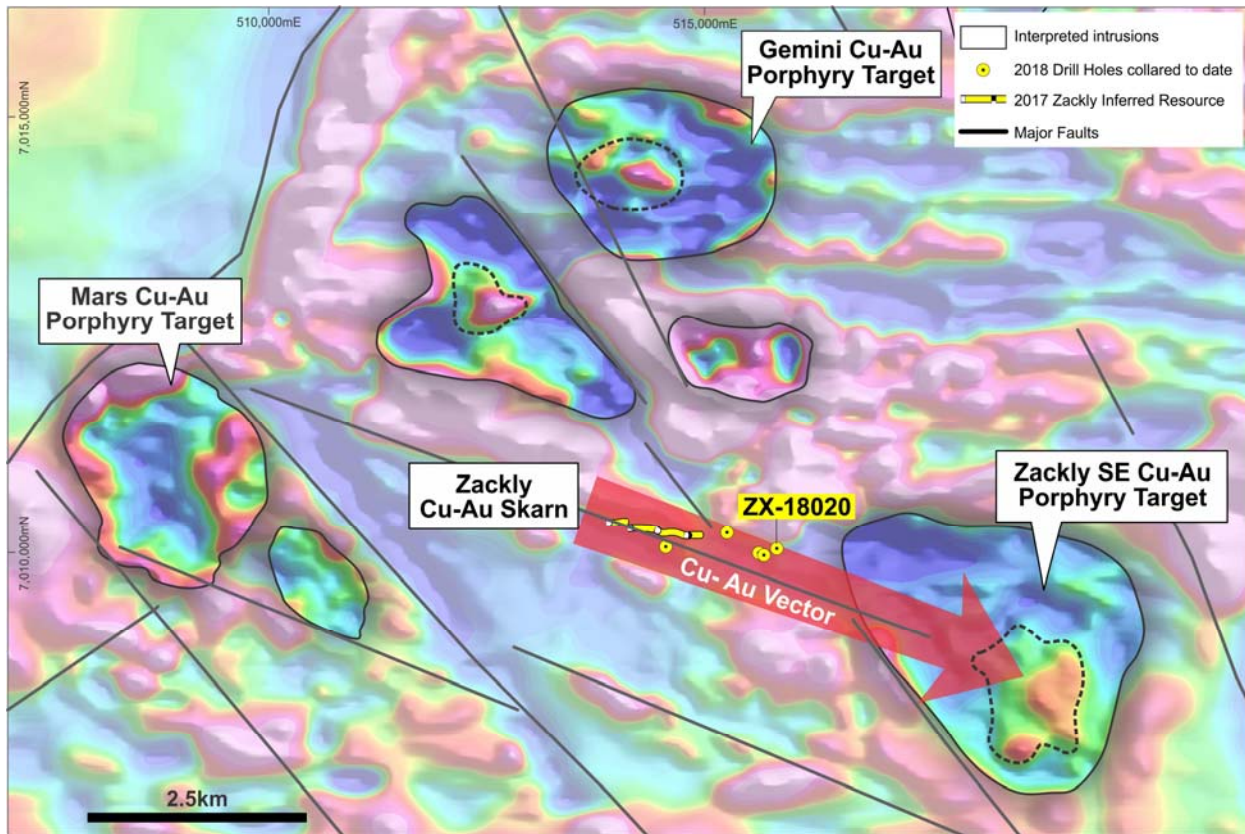


Figure 7 Aeromagnetic imagery showing a prominent magnetic anomaly to the SE of the Zackly inferred resource. Note the recently completed drill hole ZX-18020 in which thick zones of copper mineralisation were intersected, suggesting a possible vector of increasing widths of mineralisation towards the magnetic anomaly which represents a porphyry Cu-Au target

APPROACHING ECONOMIC SCALE

The Alaska Range Project also includes the Caribou Dome deposit, which has a JORC Resource of 2.8Mt at 3.1% copper, containing 85,500t of copper (refer Table 1 below).

PolarX is rapidly delineating a sufficient high-grade copper-gold resource inventory between Zackly and Caribou Dome to underpin feasibility studies on combined or stand-alone operations.

TABLE 1: Alaska Range Project Resource Estimates (JORC 2012), 0.5% Cu cut-off grade

	Category	Million Tonnes	Cu %	Au g/t	Ag g/t	Contained Cu (t)	Contained Cu (M lb)	Contained Au (oz)	Contained Ag (oz)
ZACKLY	Inferred	3.4	1.2	2.0	14.0	41,200	91	213,000	1,500,000
CARIBOU DOME	Inferred	1.6	3.2	-		52,300	115	-	-
	Indicated	0.6	2.2	-		13,000	29	-	-
	Measured	0.6	3.6	-		20,500	45	-	-
					TOTAL	127,000	280	213,000	1,500,000

PolarX aims to substantially increase the current inferred resource at Zackly with this drilling program as it vectors towards what it believes may be a deeper and much larger buried porphyry source which forms a prominent magnetic anomaly at Zackly SE.

PROGRESS REPORTS

PolarX will continue to publish further updates, including impending assays, as drilling progresses through the northern summer.

For and on behalf of the Board.

For further information, please contact the Company directly on +61 8 6465 5500

Media

For further information, please contact:

Paul Armstrong

Read Corporate

+61 8 9388 1474

TABLE 2: DRILL HOLE COLLAR DETAILS FOR ZACKLY 2018 DRILLING (UTM Zone 6N, WGS84)

Hole_ID	Hole Type	Easting (m)	Northing (m)	Elevation (m)	Depth (m)	Dip	Azimuth
ZX-18016	DDH-HQ	515,260	7,010,225	1,408	143.5	-60	180
ZX-18017	DDH-HQ	515,620	7,009,990	1,427	173.3	-50	180
ZX-18018*	DDH-HQ	514,555	7,010,060	1,377	TBA	-65	360
ZX-18019	DDH-HQ	515,680	7,009,965	1,427	174.3	-50	180
ZX-18020	DDH-HQ	515,830	7,010,038	1,437	98.7	-60	180
ZX-18021*	DDH-HQ	515,835	7,009,950	1,420	TBA	-60	360

*Drilling still in progress

ADDITIONAL DISCLOSURE

The Australasian Code for Reporting of Exploration Results, Mineral Resources and Ore Reserves (the 'JORC Code') sets out minimum standards, recommendations and guidelines for Public Reporting in Australasia of Exploration Results, Mineral Resources and Ore Reserves. The information contained in this announcement has been presented in accordance with the JORC Code.

Information in this report relating to Exploration results is based on information compiled by Dr Frazer Tabearth (an employee and shareholder of PolarX Limited), who is a member of The Australian Institute of Geoscientists. Dr Tabearth has sufficient experience which is relevant to the style of mineralisation and type of deposit under consideration and to the activity which he is undertaking to qualify as a Competent Person under the 2012 Edition of the Australasian Code for reporting of Exploration Results, Mineral Resources and Ore Reserves. Dr Tabearth consents to the inclusion of the data in the form and context in which it appears.

There is information in this announcement relating to:

- (i) the Mineral Resource Estimate for the Caribou Dome Deposit (Alaska Range Project), which was previously announced on 5 April 2017; and*
- (ii) the Mineral Resource Estimate for the Zackly Deposit (Alaska Range Project), which was previously announced on 20 March 2018.*

Other than as disclosed in those announcements, the Company confirms that it is not aware of any new information or data that materially affects the information included in the original market announcements, and that all material assumptions and technical parameters have not materially changed. The Company also confirms that the form and context in which the Competent Person's findings are presented have not been materially modified from the original market announcements.

Forward Looking Statements:

Any forward-looking information contained in this news release is made as of the date of this news release. Except as required under applicable securities legislation, PolarX does not intend, and does not assume any obligation, to update this forward-looking information. Any forward-looking information contained in this news release is based on numerous assumptions and is subject to all of the risks and uncertainties inherent in the Company's business, including risks inherent in resource exploration and development. As a result, actual results may vary materially from those described in the forward-looking information. Readers are cautioned not to place undue reliance on forward-looking information due to the inherent uncertainty thereof.

Company Overview

PolarX is an advanced ASX-listed mineral explorer and developer (ASX: PXX). The recently formed PolarX brings together exciting Alaskan assets the “**Alaska Range Project**”, covering 241km² of State Mining Claims. High-Grade existing resources and numerous large unexplored advanced targets are within this impressive **35km mineralised belt** now under PolarX’s control.

IMPRESSIVE HIGH-GRADES

Current Copper and Copper equivalent grades of 4% and 5.5% respectively compare favourably with some of the world’s highest grade operating mines. This allows an initially small-scale highly profitable development. One of the Company’s greatest advantages is the high-grade nature of its deposits. The JORC resource grade at Caribou Dome is 3.1% Cu and the JORC resource grade at Zackly is 1.2% Cu and 2.0 g/t Au. Both the Zackly and Caribou-Dome deposits remain open in all directions. No targets outside the existing resources have ever been drill-tested to date.

Exploration and development programs are designed to initially bring the 100% owned Zackly Deposit and 80% controlled Caribou-Dome Deposit into early production whilst much larger new targets such as Senator (90%) and Mars (100%), are tested and if successful, advanced to resource/reserve status.

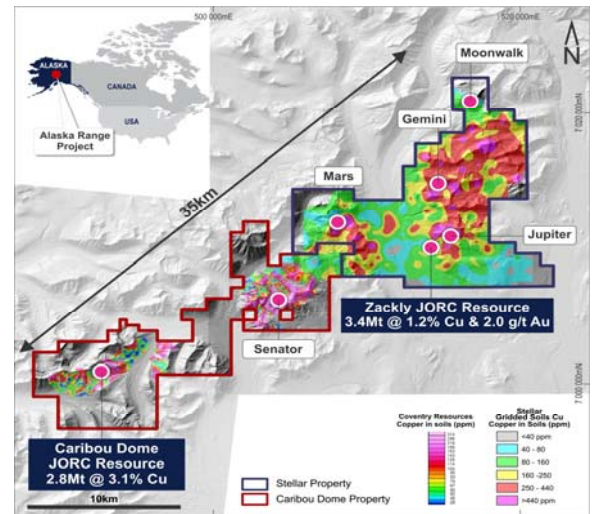
Both existing deposits are expected to progress to feasibility assessment in the near future whilst they continue to rapidly expand. Early environmental baseline surveys are underway and specialists have been engaged to assist in the future mine permitting process.

MASSIVE UPSIDE

Early soil sampling demonstrates almost the **ENTIRE 35km belt is mineralised with Copper, Gold and Silver** from surface in various geological forms.

PROVEN MANAGEMENT

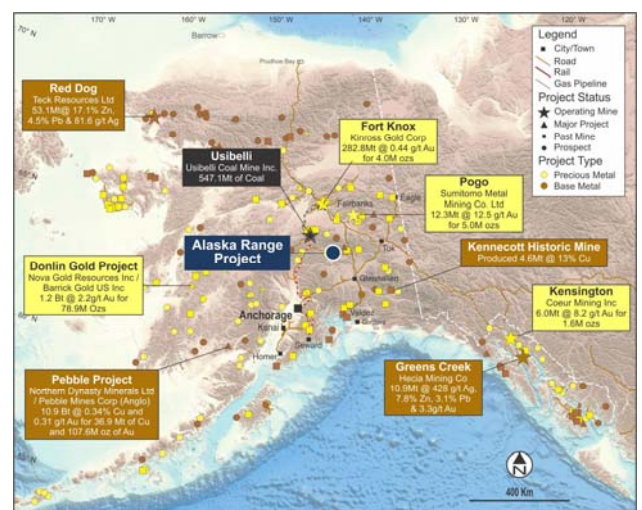
PolarX has consolidated this entire region and has assembled an accomplished technical and commercial team in Australia with a proven record of delivering projects into production and a well-established technical and operational team in Alaska, USA. Shareholders, Mitchell River Group in Perth and Millrock Resources Inc. in Alaska each provide technical and on-ground operational assistance as required.



	Tonnes (Mt)	Contained Cu (t)	Contained Au (oz)
ZACKLY	3.4	41,200	213,000
CARIBOU DOME	3.1	85,800	-
TOTAL		127,000	213,000

REGIONAL CONTROL

For the first time, PolarX’s integration will allow fully integrated regional exploration and development of the consolidated Alaska Range Project. It immediately combines existing substantial high-grade resources and provides exploration upside potential in one of the world’s best mining regions with road access and excellent nearby infrastructure. Alaska already hosts many of the world’s largest and highest grade gold and copper mines with similar geology to PolarX’s package. Members of the team have operated in Alaska for over 20 years and have been directly involved in 2 of more recent large discoveries at Pebble and at Donlin Creek.



JORC CODE 2012 EDITION – TABLE 1 REPORT FOR THE ZACKLY PROSPECT

Section 1: Sampling Techniques and Data

(Criteria in this section applies to all succeeding sections)

Criteria	JORC Code Explanation	Commentary
Sampling Techniques	<ul style="list-style-type: none"> Nature and quality of sampling (eg, cut channels, random chips, or specific specialised industry standard measurement tools appropriate to the minerals under investigation, such as downhole gamma sondes, or handheld XRF instruments, etc.). These examples should not be taken as limiting the broad meaning of sampling. Include reference to measures taken to ensure sample representivity and the appropriate calibration of any measurement tools or systems used. Aspects of the determination of mineralisation that are Material to the Public Report. In cases where 'industry standard' work has been done, this would be relatively simple (eg, 'reverse circulation drilling was used to obtain 1m samples from which 3kg was pulverised to produce a 30g charge for fire assay'). In other cases, more explanation may be required, such as where there is coarse gold that has inherent sampling problems. Unusual commodities or mineralisation types (eg, submarine nodules) may warrant disclosure of detailed information 	<ul style="list-style-type: none"> Multiple soil, trenching, geophysical and drilling programs have been completed at the Zackly Project between 1980 and 1994. All programs employed different methodologies from program to program. Previous work programs appear to have been undertaken in accordance with industry standard practices at the time they were implemented. Drilling has been completed at the Zackly prospect between 1981 and 1994 over 5 different campaigns using rotary and core drilling methods. Resources Association of Alaska (RAA) in JV with UNC Teton Exploration Drilling (Teton) undertook the following campaigns: <ul style="list-style-type: none"> 1981: 21 diamond holes for 2,964m 1982: 19 diamond holes for 5,855m Core from the 1981 and 1982 campaigns was selectively sampled at varying intervals. In 1987 Nerco Mining Company (NMCO) in JV with Alaska Boulder drilled 43 rotary holes for 2,959m (sampled at 5ft intervals) and 6 diamond holes for 390m (sampled at 2ft intervals). In 1990 NMCO in JV with Phelps Dodge drilled 3 diamond holes for 386m. In 1994 NMCO in JV with Hemlo Gold drilled 7 rotary holes for 460m. Holes were sampled at 5ft intervals. Limited information exists regarding sample preparation and analysis techniques for the previous Zackly drilling programs.
Drilling Techniques	<ul style="list-style-type: none"> Drill type (eg, core, reverse circulation, open-hole hammer, rotary air blast, auger, Bangka, sonic, etc.) and details (eg, core diameter, triple or standard tube, depth of diamond tails, face-sampling bit or other type, whether core is oriented and if so, by what method, etc.). 	<ul style="list-style-type: none"> Approximately 9,595m of diamond drilling and 3,419m of rotary drilling has been completed at the Zackly project (99 holes) prior to 2017. This report specifically refers to drilling undertaken in 2018 on the Zackly Prospect, where 4 diamond holes for ~590m have been completed to date, and 2 are in progress. The 2018 drilling program utilized HQ standard tube and HQ3 triple tube drilling equipment. Downhole surveys were completed using a Reflex EZ-trac multi-shot survey tool. Core for the HQ3 triple tube holes was oriented by the drillers at the rig each run using the Reflex ACTIII orientation tool, and then checked by the rig geologist and again by the core logging geologist.

Drill Sample Recovery	<ul style="list-style-type: none"> • Method of recording and assessing core and chip sample recoveries and results assessed. • Measures taken to maximise sample recovery and ensure representative nature of the samples. • Whether a relationship exists between sample recovery and grade and whether sample bias may have occurred due to preferential loss/gain of fine/coarse material 	<ul style="list-style-type: none"> • Drill hole logs for diamond drill holes include statistics on core recoveries. Core recoveries have been in the range of 80% to 100% for this program. • Careful use of drilling muds and where possible, triple tubing drilling techniques have been employed to maximise core recovery.
Logging	<ul style="list-style-type: none"> • Whether core and chip samples have been geologically and geotechnically logged to a level of detail to support appropriate Mineral Resource estimation, mining studies and metallurgical studies. • Whether logging is qualitative or quantitative in nature. Core (or costean, channel, etc.) photography. • The total length and percentage of the relevant intersections logged 	<ul style="list-style-type: none"> • Geological logs were recorded for the entire length of all diamond drill holes. • Core is geologically and geotechnically logged by qualified geologists. Where possible structural angles are measured for later interpretation. • Core is qualitatively logged and all trays are photographed. • It is anticipated that no additional drilling in the known mineralised areas will be necessary in order to confirm the geological model and collect appropriate geotechnical data prior to defining any Mineral Resource.
Sub-Sampling techniques and sample preparation	<ul style="list-style-type: none"> • If core, whether cut or sawn and whether quarter, half or all core taken. • If non-core, whether riffled, tube sampled, rotary split, etc. and whether sampled wet or dry. • For all sample types, the nature, quality and appropriateness of the sample preparation technique. • Quality control procedures adopted for all sub-sampling stages to maximise representivity of samples. • Measures taken to ensure that the sampling is representative of the in-situ material collected, including for instance results for field duplicate/second-half sampling. • Whether sample sizes are appropriate to the grain size of the material being sampled. 	<ul style="list-style-type: none"> ▪ Samples have not yet been cut.
Quality of assay data and laboratory tests	<ul style="list-style-type: none"> • The nature, quality and appropriateness of the assaying and laboratory procedures used and whether the technique is considered partial or total. • For geophysical tools, spectrometers, handheld XRF instruments, etc., the parameters used in determining the analysis including instrument make and model, reading times, 	<ul style="list-style-type: none"> • Samples have not yet been assayed for these holes. Results to be reported once available

	<p>calibrations factors applied and their derivation, etc.</p> <ul style="list-style-type: none"> Nature of quality control procedures adopted (e.g. standards, blanks, duplicates, external laboratory checks) and whether acceptable levels of accuracy (i.e. lack of bias) and precision have been established 	
Verification of sampling and assaying	<ul style="list-style-type: none"> The verification of significant intersections by either independent or alternative company personnel. The use of twinned holes. Documentation of primary data, data entry procedures, data verification, data storage (physical and electronic) protocols. Discuss any adjustment to assay data 	<ul style="list-style-type: none"> Multiple companies have undertaken drilling programs at the Project previously. Such programs have included infill drilling programs, whereby new holes have been drilled between previous holes that had successfully intersected mineralisation. Hence the presence and extents of mineralisation (to some extent) has been confirmed. The 2017 program by PolarX included 11 holes which were twins of historical drill holes. The 2018 program is designed to drill for down-dip and along-strike extensions of the known mineralization. Primary data was sourced from an existing digital database and compiled into an industry standard drill hole database management software (DataShed™). All historical logs and assays from previous drilling (1981, 1982, 1987, 1990 & 1994) have been individually compared and checked for all records in the digital database against the scanned hardcopy reports, logs (recovery, lithology and assay) and any other records (maps, cross-sections etc.). Records have been made of any updates that have been made in cases of previous erroneous data entry.
Location of data points	<ul style="list-style-type: none"> Accuracy and quality of surveys used to locate drillholes (collar and down-hole surveys), trenches, mine workings and other locations used in Mineral Resource estimation. Specification of the grid system used. Quality and adequacy of topographic control. 	<ul style="list-style-type: none"> Drill hole collars are staked to WGS84 UTM Zone 6. Checks of the coordinates will be made by differential GPS surveying. A high-resolution (sub-metre accuracy) drone survey of digital elevation and ortho-photography has been completed for the Zackly Prospect. Locational accuracy at collar and down the drill hole is considered adequate for this stage of exploration
Data Spacing and distribution	<ul style="list-style-type: none"> Data spacing for reporting of Exploration Results. Whether the data spacing and distribution is sufficient to establish the degree of geological and grade continuity appropriate for the Mineral Resource and Ore Reserve estimation procedure(s) and classifications applied. Whether sample compositing has been applied. 	<ul style="list-style-type: none"> Drill-hole spacing is variable, with sections varying from 80m to 400m apart. This spacing will decrease as more holes are drilled in 2018. It is believed that the current drilling program will allow a statistical comparison between this program and previously undertaken drilling programs, and if the statistics indicate sampling of the same population, that the drilling density will be sufficient for a Mineral Resource to be declared once assays have been received and the appropriate resource estimation modelling has been completed.

		<ul style="list-style-type: none"> No sample compositing has been documented for historical drilling.
Orientation of data in relation to geological structure	<ul style="list-style-type: none"> Whether the orientation of sampling achieves unbiased sampling of possible structures and the extent to which this is known, considering the deposit type. If the relationship between the drilling orientation and the orientation of key mineralised structures is considered to have introduced a sampling bias, this should be assessed and reported if material. 	<ul style="list-style-type: none"> The dip and azimuth of drill holes has been planned to be orientated approximately perpendicular to the orientation of the previously identified skarn mineralisation. The orientation of drill holes relative to key geological structures does not appear to have introduced a sampling bias.
Sample Security	<ul style="list-style-type: none"> The measures taken to ensure sample security 	<ul style="list-style-type: none"> Sample security measures have not been documented for any of the historical drilling. Drill samples from the current program will be transported to ALS Chemex laboratories in Fairbanks by representatives of PolarX, where they will be securely stored prior to preparation. Samples will be crushed at ALS Chemex laboratory in Fairbanks, and crushed samples then sent under ALS supervision to ALS laboratories in Reno and Vancouver for pulverization and assay. All remaining coarse crush reject is to be retained and stored at ALS Chemex laboratory in Fairbanks.
Audits or reviews	<ul style="list-style-type: none"> The results of any audits or reviews of sampling techniques and data 	<ul style="list-style-type: none"> The Company is unaware of any sampling audits adopted previously.

Section 2: Reporting of Exploration Results

(Criteria listed in section 1 also apply to this section)

Criteria	JORC Code Explanation	Commentary
Mineral tenement and land tenure status	<ul style="list-style-type: none"> Type, reference name/number, location and ownership including agreements or material issues with third parties such as joint ventures, partnerships, overriding royalties, native title interests, historical sites, wilderness or national park and environmental settings. The security of the tenure held at the time of reporting along with any known impediments to obtaining a licence to operate in the area 	<ul style="list-style-type: none"> The Stellar Project comprises 215 contiguous State Mining Claims in the Talkeetna District of Alaska. The claims cover a total area of 34,400 acres (13,921 hectares), and are registered to Vista Minerals Alaska Inc a wholly owned subsidiary of PolarX Limited. The Caribou Dome Project comprises 202 contiguous State Mining Claims covering an area of 25,560 acres (10,344 hectares) in the Talkeetna District of Alaska. The Company controls 80% of the Claims via option agreements with Hatcher Resources Inc. and SV Metals LP. While the Claims are in good standing, additional permits/licenses may be required to undertake specific (generally ground-disturbing) activities such as drilling and underground development.
Exploration done by other parties	<ul style="list-style-type: none"> Acknowledgment and appraisal of exploration by other parties. 	<ul style="list-style-type: none"> A brief history of previous exploration was released to the market on 24th May 2017.
Geology	<ul style="list-style-type: none"> Deposit type, geological setting and style of mineralisation 	<ul style="list-style-type: none"> A brief description of the deposit type, geological setting and style of mineralisation was released in a press statement on 3rd October 2017.
Drillhole Information	<ul style="list-style-type: none"> A summary of all information material to the understanding of the exploration results including a tabulation of the following information for all Material drillholes: <ul style="list-style-type: none"> easting and northing of the drillhole collar elevation or RL (Reduced Level elevation above sea level in metres) of the drillhole collar dip and azimuth of the hole downhole length and interception depth hole length. If the exclusion of this information is justified on the basis that the information is not Material and this exclusion does not detract from the understanding of the report, the Competent Person should clearly explain why this is the case. 	<ul style="list-style-type: none"> Reported results are summarised in relevant tables within the attached announcement. The drill holes reported in this announcement have the following parameters applied: <ul style="list-style-type: none"> Grid co-ordinates are reported here in WGS 84 UTM Zone 6. Dip is the inclination of the hole from the horizontal. Azimuth is reported as the direction toward which the hole is drilled relative to True North. Down hole length of the hole is the distance from the surface to the end of the hole, as measured along the drill trace Intersection depth is the distance down the hole as measured along the drill trace. Intersection width is the downhole distance of an intersection as measured along the drill trace.
Data aggregation methods	<ul style="list-style-type: none"> In reporting Exploration Results, weighting averaging techniques, maximum and/or minimum grade truncations (e.g. cutting of high grades) and cut-off grades are usually Material and should be stated. 	<ul style="list-style-type: none"> No results reported in tis release other than visual inspection of mineral species.

	<ul style="list-style-type: none"> Where aggregate intercepts incorporate short lengths of high grade results and longer lengths of low grade results, the procedure used for such aggregation should be stated and some typical examples of such aggregations should be shown in detail. The assumptions used for any reporting of metal equivalent values should be clearly stated 	
Relationship between mineralisation widths and intercept lengths	<ul style="list-style-type: none"> These relationships are particularly important in the reporting of Exploration Results. If the geometry of the mineralisation with respect to the drillhole angle is known, its nature should be reported. If it is not known and only the downhole lengths are reported, there should be a clear statement to this effect (eg, 'down hole length, true width not known'). 	<ul style="list-style-type: none"> Thickness of mineralisation reported is down-hole thickness. There is insufficient interpretation of the mineralisation to confidently report "true widths" for these holes at present. It is however noted that the mineralized lenses appear to be relatively steeply dipping. As such it is probable that "true widths" will be smaller than the down-hole widths by approximately 50% (depends on hole dip).
Diagrams	<ul style="list-style-type: none"> Appropriate maps and sections (with scales) and tabulations of intercepts should be included for any significant discovery being reported. These should include, but not be limited to a plan view of drillhole collar locations and appropriate sectional views 	<ul style="list-style-type: none"> Summary plans and schematic sections are included in this announcement and previous announcements made for the Zackly Inferred Resource.
Balanced reporting	<ul style="list-style-type: none"> Where comprehensive reporting of all Exploration Results is not practicable, representative reporting of both low and high grades and/or widths should be practiced to avoid misleading reporting of Exploration Results 	<ul style="list-style-type: none"> This report provides a short summary of the mineralisation description and down-hole thickness encountered in each hole drilled in 2018 to date.
Other substantive exploration data	<ul style="list-style-type: none"> Other exploration data, if meaningful and material, should be reported including (but not limited to) geological observations; geophysical survey results; geochemical survey results; bulk samples – size and method of treatment; metallurgical test results; bulk density, groundwater, geotechnical and rock characteristics; potential deleterious or contaminating substances. 	<ul style="list-style-type: none"> IP surveying was undertaken in 2016 and 2017. Two preliminary metallurgical reports focusing on gold recoveries from near-surface, mainly oxidized skarn material were completed in 1987 and 1992. These tests comprised gravity, floatation and cyanidation methods for gold recoveries, and were conducted on 4 bulk samples.
Further Work	<ul style="list-style-type: none"> The nature and scale of planned further work (eg, tests for lateral extensions or depth extensions or large-scale step-out drilling). Diagrams clearly highlighting the areas of possible extensions, including the main geological interpretations and future drilling areas, provided this information is not commercially sensitive. 	<ul style="list-style-type: none"> A suitable work program will be developed following more comprehensive review, compilation and interpretation of previously acquired data. Diagrams highlighting potential drilling target areas are included in this announcement.