

RESOURCE UPGRADE AT MOUNT MACKENZIE GOLD & SILVER PROJECT



Highlights

- QMines recently acquired the Mount Mackenzie gold and silver project from Resource & Energy Group and have now completed an updated Mineral Resource Estimate for the project.

The Resource now stands at **3.3Mt @ 1.40g/t Au and 8.4g/t Ag** for a total **151,000oz Au** and **902,000oz Ag** comprising:

- 2.2Mt @ 1.40g/t Au and 9.7g/t Ag (Indicated category)
- 1.1Mt @ 1.54g/t Au and 6.6g/t Ag (Inferred category)
- The Resource upgrade represents an **increase of 16% in gold resource with 67% now in the higher confidence Indicated category.**
- Mineralisation remains open along strike and at depth with the maiden drilling program designed to confirm and expand the resource reported here.
- **This new resource supports QMines’ growing Central Queensland hub-and-spoke production model, now underpinned by ~20Mt of JORC Resources across three 100% owned projects.**

Introduction

The Mount Mackenzie project is situated approximately 140km north west of Rockhampton and proximal to QMines Develin Creek project which lies 45km to the south east (Figure 1). The acquisition of Mount Mackenzie is projected to improve the proposed life of mine at the Mount Chalmers copper and gold project, adding significant gold and silver mineralisation into the Mt Chalmers and Develin Creek global resources.

The acquisition of the Mount Mackenzie project represents a significant increase in gold and silver endowment and a substantial increase in scale. QMines plans to incorporate the Mount Mackenzie project into the Mount Chalmers mine plan where the deposit could potentially be treated at the proposed Mt Chalmers processing plant located 140 kilometres to the southeast in Rockhampton (Figure 1).

Management Comment

Executive Chairman Andrew Sparke commented:

“This resource upgrade at Mt Mackenzie is a great first step for the Mount Mackenzie project. It not only validates our belief in the quality of this asset, but also grows the resource base as we progress toward regional development.

“With the recent acquisition of the Mt Mackenzie project, we now have the scale, the team and the strategy to deliver a long-life, multi-asset operation producing copper, gold, silver and zinc in one of Australia’s most supportive jurisdictions.”

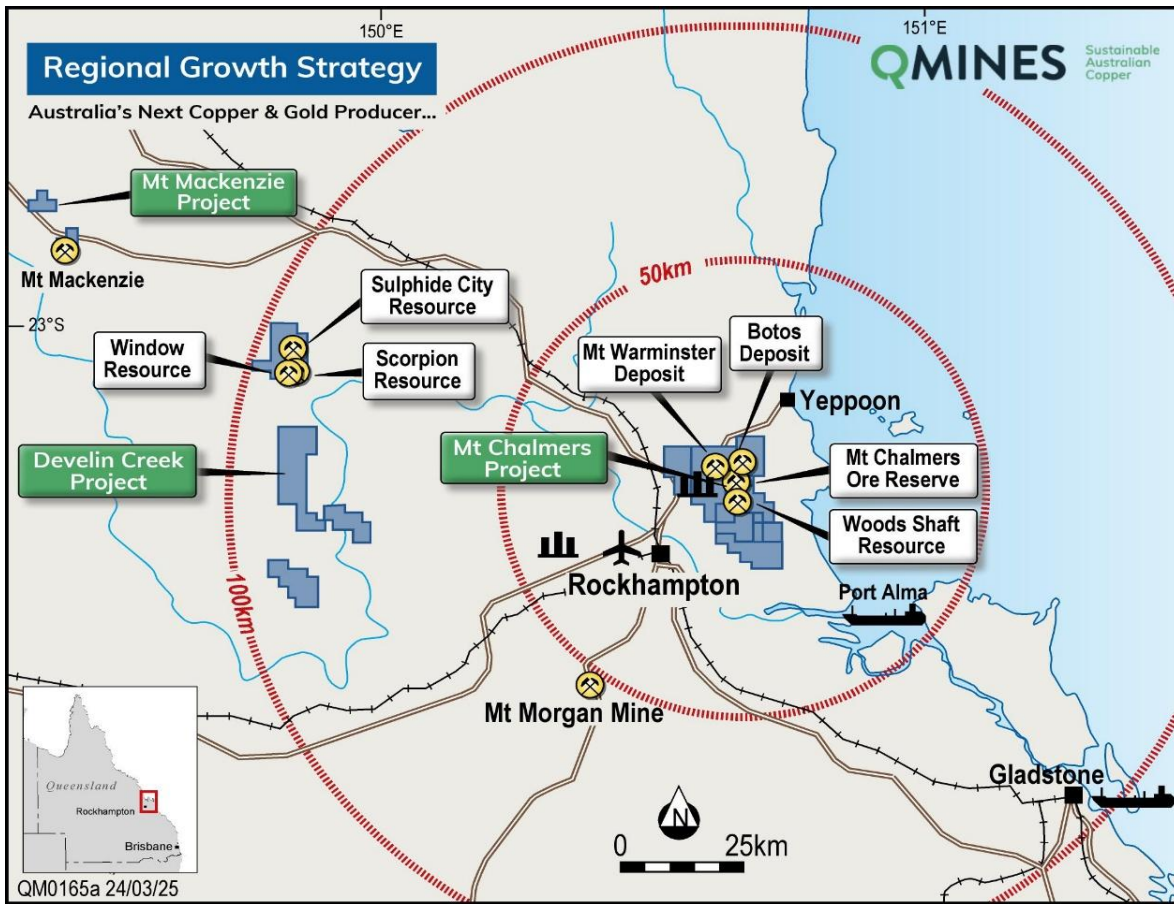


Figure 1: Location and Infrastructure at Mt Chalmers, Develin Creek and Mt Mackenzie projects.

Upgrade Mineral Resource Estimate

The Mt Mackenzie Minerals Resource Estimate was prepared by independent Resource consultants, Hyland Geological and Mining Consultants (**HGMC**), at the request of QMINES. It was initiated in April 2025 as part of the project acquisition Due Dilligence process.

The Mineral Resource model is considered a revised estimate reported in accordance with the Australasian Code for Reporting of Exploration Results, Mineral Resources and Ore Reserves (JORC 2012), including JORC Table 1 and accompanying tables 2 and 3 (Appendix 1). The Mount Mackenzie project is located in Queensland approximately 130km north-west of Rockhampton within the exploration licence MDL 2008 (Figure 1).

Access to site is by means of a sealed road via the town of Marlborough from the east north-east. The project is located within 100% exclusive land and the tenement is in good standing with no known impediment to future grant of a mining lease. The deposit is located within MDL 2008 which is owned 100% by QMINES and was acquired by the Company from Resource & Energy Group in July 2025.

Regional Geology

The Mt Mackenzie project is located within a Paleozoic convergent plate margin complex, where the Connors Magmatic Arc forms a major structural feature along the eastern margin of the Permian Bowen Basin (Dear, 1996, Beams & Harvey, 1999). This arc is primarily composed of felsic to intermediate intrusive, volcanics and volcanoclastic sediments of Devonian to Early Permian age. Late Carboniferous to Early Permian volcanics are unconformably overlain to the west by Permian Bowen Basin sediments (Beams & Harvey, 1999) (Figure 2).

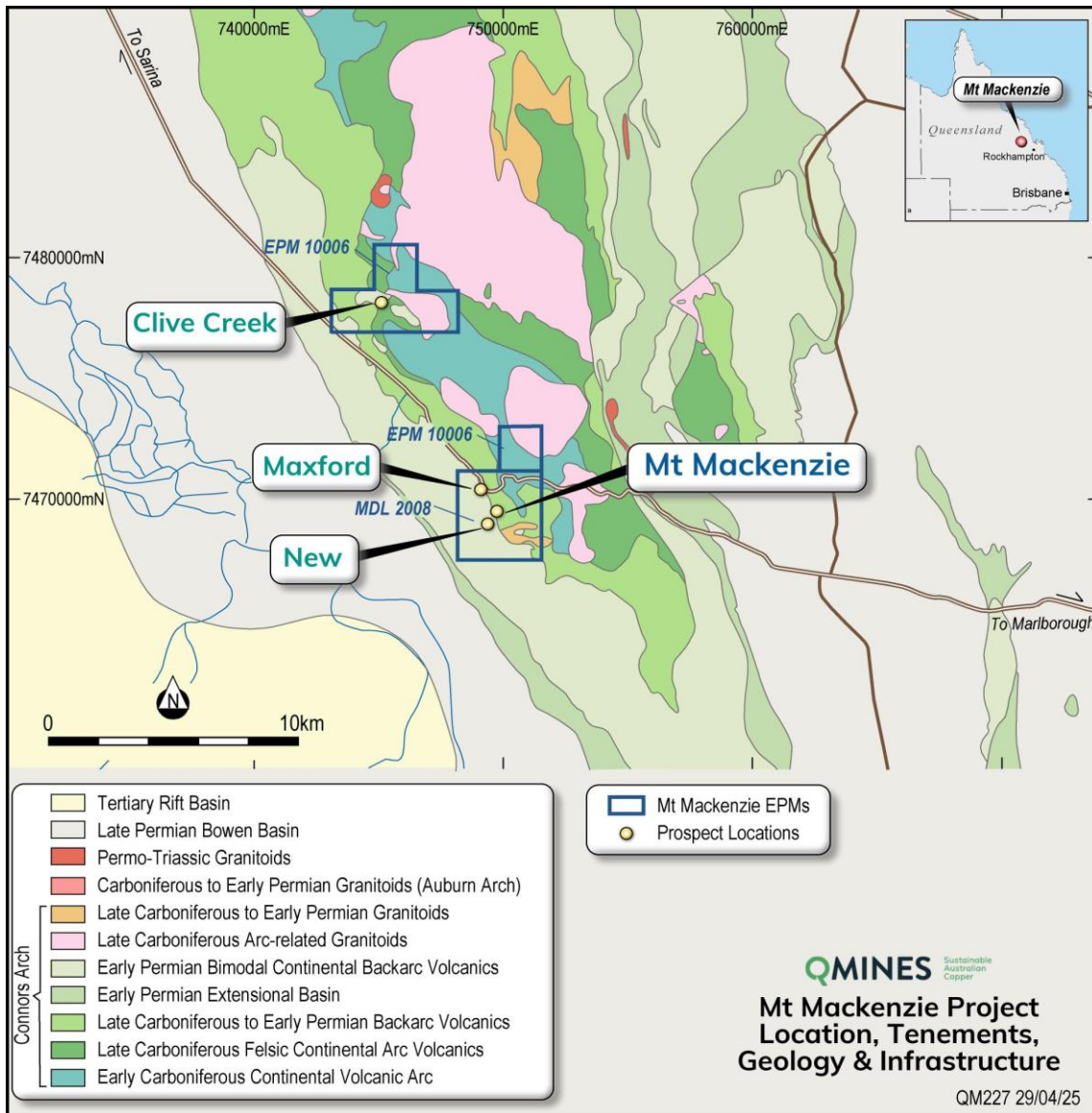


Figure 2: Regional geology at the Mount Mackenzie gold silver project.

Local Geology

The Mt Mackenzie prospect comprises volcanic rocks with minor sedimentary rocks, both intruded by granitoids. A summary of the local geology of Mount Mackenzie can be seen in Figure 3.

Steeply dipping, thinly bedded rhyolite of the Connors Volcanics with interlayered, banded andesites are overlain unconformably by a discontinuous conglomerate and rhyolitic to dacitic volcanics – mainly ignimbrites of the Macksford Felsics. These are overlain by westerly dipping (~20°) andesitic tuffs, breccias and lavas of the Macksford Andesite, dated as $314.9 \pm 3.6\text{Ma}$ (Burch, 1999, in Beams and Harvey, 1999b, p16).

Andesitic porphyry dykes cut the Macksford Andesite lavas of the Connors Volcanics. The Macksford Felsics and Macksford Andesite were intruded by the South Creek Igneous Complex, dated as $304.0 \pm 2.2\text{Ma}$ (Burch, 1999 in Beams and Harvey, 1999b, p16). In the South Knoll area, the South Creek Igneous rocks are monzodiorite to monzonite in composition. Small bodies and dykes of latite porphyry and associated small bodies of dacite are present.

The Coppermine Tuff (massive dacite) is dated as $296.6 \pm 2.5\text{Ma}$ (Burch, 1999 in Beams and Harvey, 1999b, p17). It unconformably overlies the altered Macksford Andesite and South Creek Diorite. A Lower Permian volcanoclastic / conglomerate unit unconformably overlies the Coppermine Tuff, and is in turn overlain by massive andesite of the Lizzie Creek Volcanics. Fine grained andesite dykes cut all of the above units and are assigned to the Lizzie Creek Volcanics. Tertiary to recent ironstones occur as a result of weathering of sulphides.

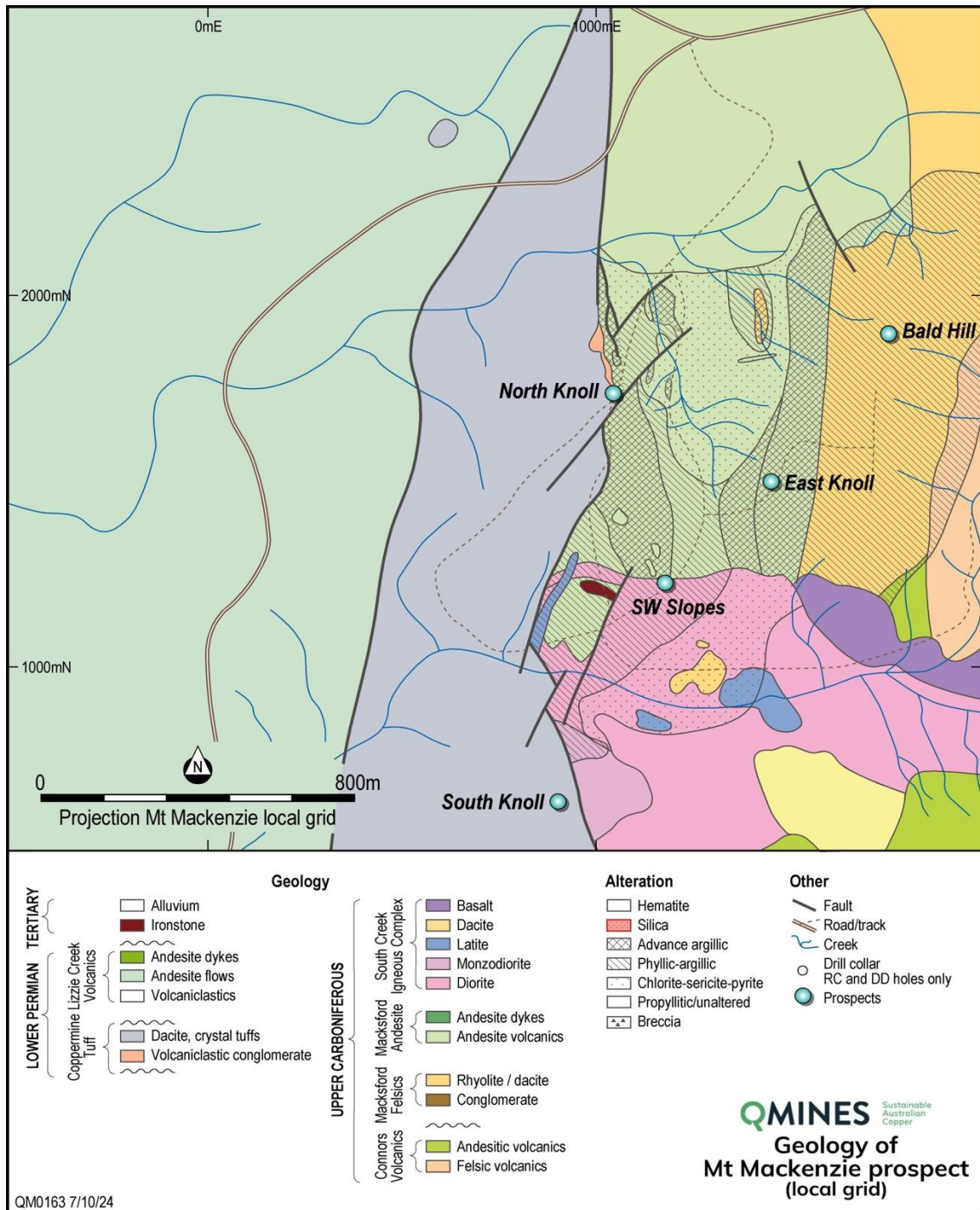


Figure 3: Mount Mackenzie local geological interpretation after Chambers (Newcrest) 2007.

Mineralisation

The style of mineralisation is considered to be high sulphidation epithermal mineralisation. Mineralisation has been dated at Late Carboniferous (Beams & Harvey, 1999b). This places the deposit in the middle of the most productive epoch of gold mineralisation in Northeast Queensland.

The Mount Mackenzie deposit comprises two principal mineralised zones referred to as North Knoll and Southwest Slopes, situated within a high-sulphidation epithermal gold-silver system. Mineralisation occurs as gold and silver bearing sulphides and oxides, distributed across a sequence of volcaniclastic rocks, brecciated rhyolites, and hydrothermally altered tuffs. Geological evidence suggests the mineralisation formed in association with the Connors Magmatic Arc during the Late Carboniferous period. The host rock is a package of volcanic-derived rocks, including andesitic to rhyolitic flows, tuffs, and breccias, cut by late-stage faults and vein systems. The mineralising system is controlled by zones of enhanced permeability, where hydrothermal fluids deposited gold-silver mineralisation along fractures and lithological contacts.

The style of mineralisation observed at Mount Mackenzie includes massive sulphide replacement, silica-sulphide breccias, vein-hosted stockwork, and disseminated mineralisation. These are typical of epithermal systems with overprinting oxidation and secondary enrichment zones closer to surface. The North Knoll zone, which hosts the majority of the defined Mineral Resource, extends over approximately 350 metres in strike and 100 metres down-dip, with mineralisation open at depth and along strike.

The Southwest Slopes zone is more steeply dipping and characterised by sub-vertical vein sets and stringer zones. This area also remains open along strike and at depth, providing scope for future resource growth through additional drilling. The main mineralisation zones for the Mount Mackenzie Gold and Silver deposit as modelled for resource estimation are shown in Figure 4 below. The drill-hole collars and traces are also shown for reference.

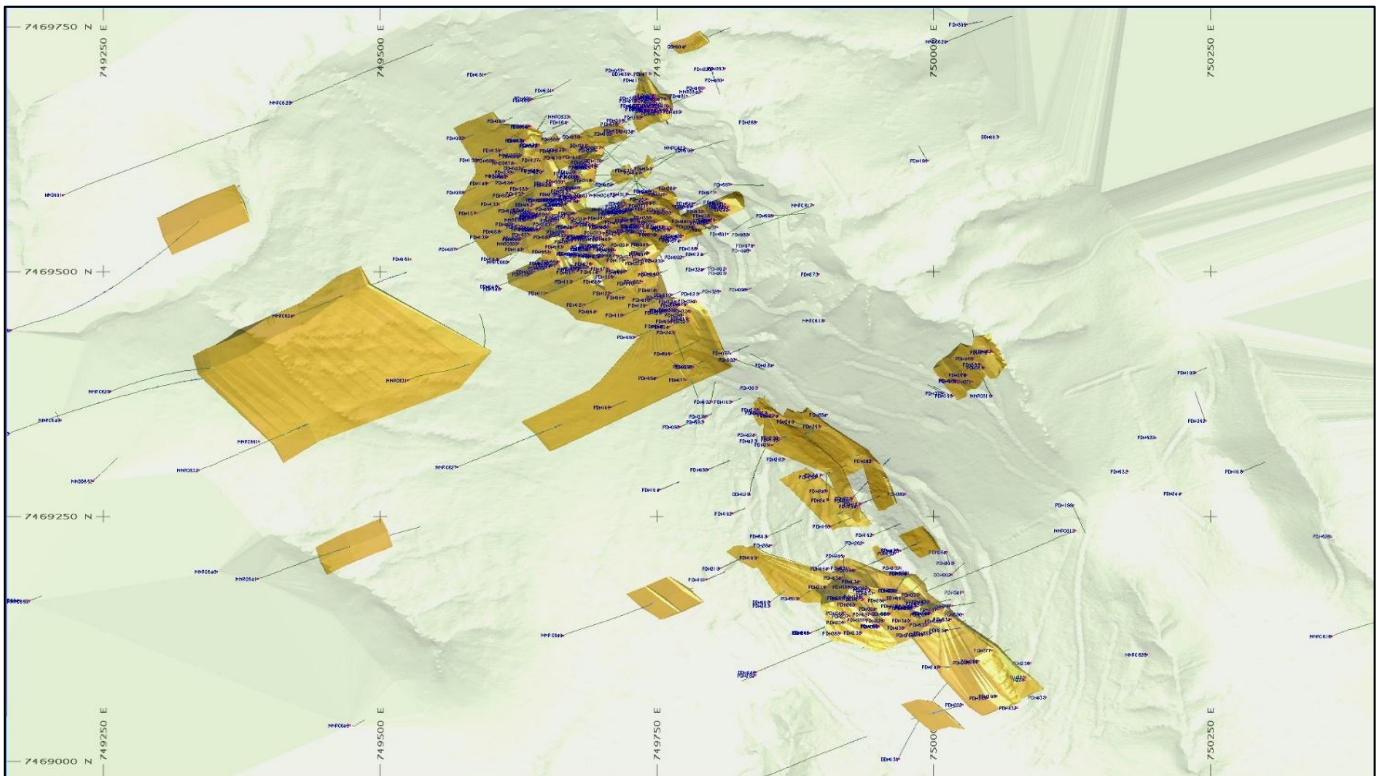


Figure 4: Mount Mackenzie Plan View of drilling and resource model wireframes with DTM topographic surface rendered as transparent.

The Mount Mackenzie system exhibits several distinctive epithermal features, including vuggy silica zones, silicified breccia pipes, and quartz-sulphide stockworks. Mineralisation styles observed include:

- Disseminated and vein-hosted gold-silver with pyrite-arsenopyrite;
- Silica-sulphide breccias and silica replacement textures; and
- Clay-altered rhyolitic tuffs with residual quartz and minor sulphides.

Wireframe models for mineralisation were developed based on a nominal 0.3g/t Au cut-off, adjusted locally to incorporate associated silver enrichment and structural continuity. HGMC constructed the updated geological and grade models using sectional interpretations, oriented N-S and E-W, integrating historic and recent drilling datasets. The models were constrained by observed mineralisation limits, with extrapolation limited to half drill spacing, typically no more than 25–30 metres beyond intercepts.

Mineralisation was coded within a primary domain (ZON1 = 1–4) reflecting discrete mineralised zones at North Knoll and Southwest Slopes. All material outside the mineralised envelopes was assigned a default waste code (ZON1 = -1). The wireframes were validated for volumetric integrity prior to use in geostatistical modelling.

Weathering & Oxidation

QMiner and Hyland Geological and Mining Consultants (**HGMC**) reviewed and updated the interpreted weathering and oxidation profile surfaces for the Mount Mackenzie deposit. This re-interpretation was informed by comprehensive geological logging data from both historical and recent drilling programs. The resulting oxidation model was used to assign an 'OXID' code to each block

in the resource model, with OXID = 1 representing oxidised material and OXID = 2 for fresh or sulphide-bearing material. This classification was applied consistently across both mineralised and non-mineralised (waste) domains.

The revised weathering surfaces resulted in a clearer demarcation between oxide and fresh material, with comparatively less transitional material than in earlier models. Consequently, the updated model delineates a higher proportion of fresh/sulphide material, which is significant in both metallurgical response and bulk density determination. These updated oxidation surfaces have informed changes to the assigned bulk density values (discussed below).

Figure 5 below shows the interpreted and modelled weathered material type interface between Oxidized / Transitional and underlying Fresh / Sulphide material developed for Mount Mackenzie block model coding.

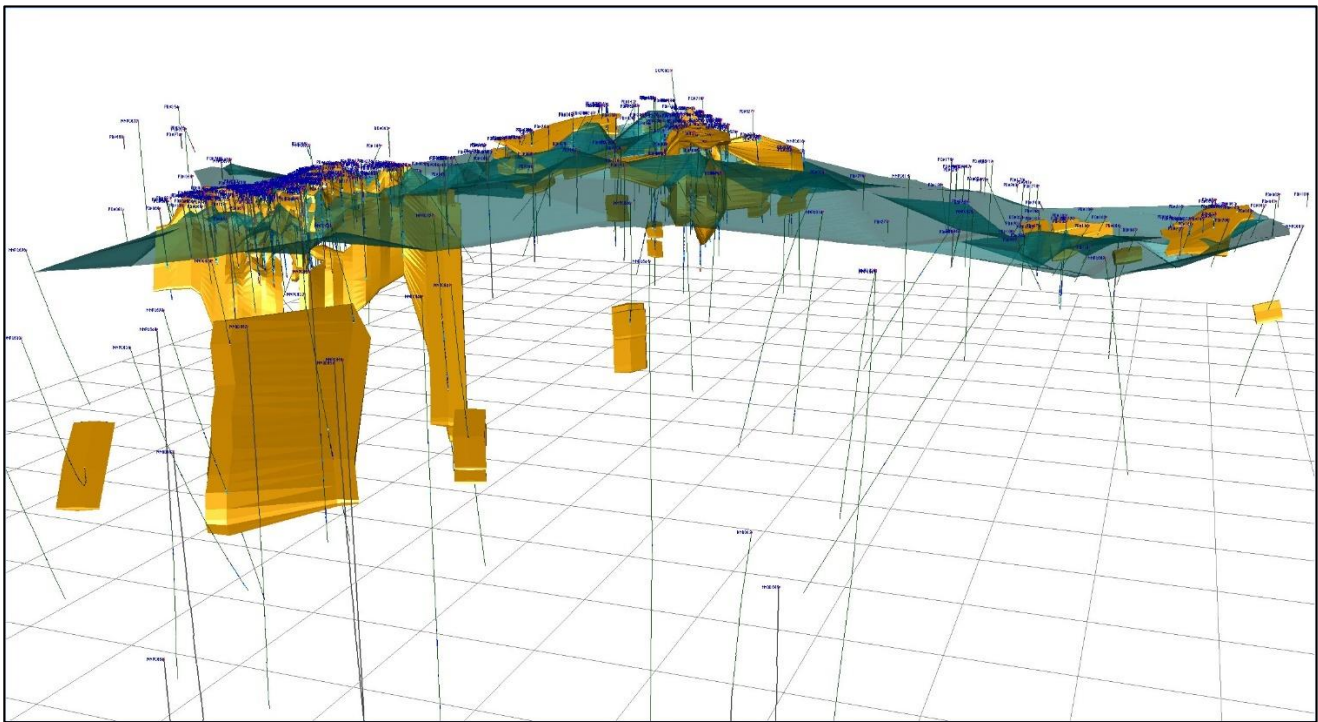


Figure 5: Mount Mackenzie Weathered Interface between Oxidized / Transitional and Fresh / Sulphide material - (blue-green surface) (Oblique view - Azim 70 degrees, Dip -15 degrees – looking towards North-West).

Table 2 presents the average 1m composite assay grades for the principal analytical elements within the mineralised domains at Mount Mackenzie, subdivided by oxidation state and the associated AREA zone codes. These figures reflect the average gold and silver grades observed in oxidised and fresh zones within the North Knoll (AREA 6), Southwest Slopes (AREA 7), and peripheral zones (AREAs 1–5).

Table 1. Mount Mackenzie – Average Grade of 2m Composites by Weathering State and Domain (OXID Code).

Domain	Weathering Code	AREA	Samples (n)	Au (g/t)	Ag (g/t)
North Knoll – ZON1=1	OXID = 1 (Oxide)	6	312	1.95	18.4
	OXID = 2 (Fresh)	6	1,024	2.41	22.7
Southwest Slopes – ZON1=1	OXID = 1 (Oxide)	7	87	1.18	11.2
	OXID = 2 (Fresh)	7	689	2.03	19.5
Peripheral Zones – ZON1=2	OXID = 1 (Oxide)	1–5	96	0.73	9.1
	OXID = 2 (Fresh)	1–5	534	1.39	15.8

Oxidation Code Definitions & Bulk Densities:

- **OXID = 1 (Oxidised):** From the topographic surface to the base of complete oxidation (BOCO), down to the top of fresh rock (TOFR) → **Bulk Density = 2.10 t/m³**
- **OXID = 2 (Fresh / Sulphide):** From TOFR to the base of the block model → **Bulk Density = 2.85 t/m³**

These revised oxidation surfaces and associated block model codes underpin the grade-tonnage reporting and metallurgical planning assumptions used in the 2025 Mineral Resource Estimate.



Drilling

Drilling programs have utilised HQ/NQ core, RC, and open-hole DTH percussion drilling. Recent drilling by Resources & Energy Group (REZ) employed 5.25" to 5.5" face sampling hammer bits. Earlier percussion programs used conventional hammers. Collars were typically cased to depths of 3 to 8 metres using 6" casing. Core orientation was achieved in recent programs and gyroscopic downhole surveys were used for RC holes. Earlier directional surveys employed Eastman or Humphrey cameras. Table 2 summarises drilling activity in the immediate Mineral Resource area, while Figure 4 illustrates the spatial distribution of drillholes across the project.

Table 2: Mount Mackenzie Project Drill Table – Summary of Drilling in Resource Area.

Drill Method	Number Holes	Percussion (m)	RC (m)	Diamond (m)	Total
Percussion	517	32,258			32,258
RC	82		1,6347		1,6347
RC/Diamond	35		3,867	5,150	9,017
Diamond	15			5,079	5,079
Total	649	32,258	20,214	10,229	62,701

The contribution to the current Mineral Resource Estimate (MRE) by metreage is approximately:

- **58%** historical percussion and RC drilling (1997–2010);
- **8%** REZ diamond drilling (2015–2020); and
- **34%** MMM verification and extensional RC drilling (2015 – 2023).

Drill types include HQ and NQ sized core, and 4½ to 5½ inch RC and percussion hammer drilling. Early percussion holes were subject to partial sampling, and these zones were the focus of verification efforts by Mount Mackenzie Mines (MMM). While some initial verification drilling appeared to return higher grades, broader datasets confirmed that original percussion results were largely consistent and reliable. Five early holes were excluded from the MRE due to poor orientation or incomplete sampling; in all such cases, nearby well-sampled holes were available and used.

Sampling & Sub-sampling Techniques

Samples were predominantly collected at 1m intervals from percussion and RC drilling, and at variable intervals from core, usually <1 metre when lithological variation occurred. RC and percussion samples were obtained using riffle splitters, cyclone splitters, or manual splitting. Cored material was half-core sampled for assay and entire core sections used for metallurgical testing.

Most samples were dry and free flowing. Wet samples were dewatered and scooped post-drainage, with potential fine loss noted. Field QA/QC involved insertion of blanks and duplicates (1 in 20 samples for MMM drilling). ALS laboratories performed all sample preparation and analysis, using standard drying, crushing, and pulverising protocols.

Early percussion drilling involved composite sampling of 1m intervals, with 2–3m composites created unless visible sulphide or alteration warranted shorter intervals. These samples were collected via onboard cyclones and split through a multi-level riffle splitter. Wet percussion samples were grab sampled in the field and air-dried before any necessary re-splitting for re-assay.

Resources & Energy Group’s RC programs and later MMM RC campaigns utilised dry, 1m sampling intervals. Samples were split on-rig via riffle splitter beneath the cyclone. In less-altered zones (footwall or hanging wall), occasional composite intervals of 3–4m were formed using a spear method, though mineralised zones were consistently sampled on a 1m basis.

Sample Analysis Method

Gold analysis was performed using 30 g or 50 g fire assay charges (PM209, AA26), with AAS or ICP-AES finish. Multi-element data was acquired by ICP-AES following 4-acid digestion (IC580, ICP61). ALS internal QA/QC included blanks, replicates, and certified reference materials. Repeat assays and consistent results across different drilling campaigns support data integrity. Sample preparation and laboratory analysis for all drilling campaigns at the Mount Mackenzie Project were carried out by accredited commercial laboratories, using analytical techniques consistent with industry standards at the time of each program.

Early percussion and core samples (1990s–early 2000s) were analysed using Atomic Absorption Spectroscopy (AAS) for gold and silver. During the 2007–2015 exploration programs conducted by Resources & Energy Group and Jeteld, samples were assayed using Inductively Coupled Plasma Optical Emission Spectrometry (ICP-OES) for multi-element analysis and fire assay with AAS finish for gold.

Subsequent drilling by Mount Mackenzie Mines (**MMM**) between 2015 and 2023 employed ICP-AES following 4-acid digest for base metals and trace elements, while gold was analysed using 30g or 50g fire assays with an AAS or ICP finish depending on grade.

Estimation Methodology

Resources were estimated within 3D mineralisation wireframes defined by 0.3g/t Au cut-off. Ten mineralisation domains were modelled, of which seven contributed to the current resource. Drill composites of 2m were used for estimation, with block sizes of 4m x 5m x 2.5m estimated via Ordinary Kriging. Validation steps included swath plots, declustered statistical comparisons, and visual checks. Bulk density was assigned based on oxidation state using Archimedes water immersion measurements from 34 samples:

- Oxidised: 2.1 t/m³
- Partially oxidised: 2.5 t/m³
- Fresh: 2.85 t/m³

Density was applied pro-rata to blocks intersecting oxidation surfaces.

Classification Criteria

Blocks were classified as Indicated where drilling density was approximately 20 x 20m to 25 x 25m, and Inferred where spacing exceeded this to approximately 50m. Classification incorporated kriging parameters, number of samples, and geological continuity. Historical data, while largely consistent with MMM drilling, contributed to conservative classification. No blocks deeper than 150m below surface were classified as Indicated.

Cut-off Grades

Resources are reported using Au cut-offs of 0.3g/t (oxide/transitional) and 0.3g/t (fresh/sulphide), based on A\$4,000/oz Au pricing, assuming CIP/CIL recovery methods. Silver was not factored into cut-off calculations but is reported.

Metallurgical Parameters & Assumptions

Fifteen variability composites and five master composites from HQ core were tested. Gold recovery was 94% (oxide/transitional) and 59% (fresh/sulphide), assuming a CIP/CIL flow sheet with 48-hour residence time. No coarse gold was observed.

Other Modifying Factors

The project area lies within MDL 2008, fully owned by QMines, free of Native Title or environmental impediments. The tenement is in good standing, and no known legal, social, or political risks are present.

Mineral Resource Estimate

The Mineral Resource Estimate (**MRE**) is utilising a 0.3g/t Au cut-off grade wireframe for the North Knoll/South West Slopes deposits which is considered suitable for open pit mining. Economic viability of the MRE at this stage has been accounted for by excluding material too distant from drilling interval 'points of observation' and reclassifying deeper thin mineralisation where necessary as Inferred resources. Table 3 below is a summary of the Mount Mackenzie Resources using the modelled gold wireframe at 0.3g Au/t cut-off grade (Au g/t) as the reporting basis for this MRE.



Table 3: Mount Mackenzie Deposit – Resource Estimate derived total contained metal in Troy ounces as at April 20th, 2025 - Using Gold Lower cut-off of 0.5g Au/t and 0.7g Au/t for Oxide and Fresh material respectively. Rounding errors may occur.

Material Type	Cut-Off	Tonnes	AU1	AG1	Gold (Au)	Silver (Ag)
	Au (g/t)	(Mt)	Au (g/t)	Ag (g/t)	kOz	kOz
Oxide (+Trans)	0.5	0.81	1.34	7.8	34.9	205.0
Fresh / Sulphide	0.7	2.54	1.42	8.6	116.3	697.1
Total	-	3.35	1.40	8.4	151.2	902.2

Assessment of the Mineral Resource against the JORC Table 1 criteria are provided in Appendix A. Table 4 shows summaries of Resources for Mount Mackenzie using a 0.5g (Au/t) lower cutoff for Oxide (+Transitional) material and 0.7g (Au/t) lower cutoff for Fresh (+Sulphide) material respectively.

Table 4: Mount Mackenzie Mineral Resource estimate using Cut-Off's of 0.5g Au/t (Oxide) and 0.7g Au/t (Fresh/Sulphide). Rounding errors may occur.

Weathering	Classification	Mt	BD t/m ³	Au (g/t)	Ag (g/t)
Oxide	Indicated	0.64	2.23	1.28	8.4
	Inferred	0.17	2.21	1.57	5.9
Fresh	Indicated	1.63	2.85	1.42	10.0
	Inferred	0.91	2.85	1.43	5.7
Total	Indicated	2.27	2.23	1.38	9.6
	Inferred	1.08	2.85	1.45	5.8
Total		3.35	2.67	1.40	8.4

Forward-Looking Statements

This document may include forward-looking statements. Forward-looking statements include, but are not limited to, statements concerning QMines Limited planned exploration program and other statements that are not historical facts. When used in this document, the words such as "could," "plan," "expect," "intend," "may", "potential," "should," and similar expressions are forward-looking statements. Although QMines believes that its expectations reflected in these forward-looking statements are reasonable, such statements involve risks and uncertainties and no assurance can be given that further exploration will result in the estimation of additional Mineral Resources.

Competent Person Statement

Ore Reserve Estimate – Mt Chalmers

The Information in this Report that relates to the Open Pit Optimisation and Ore Reserve Estimate and is based on information compiled by Mr Gary McCrae, a Competent Person who is a Member of the Australasian Institute of Mining and Metallurgy. Mr McCrae is a full-time employee of Minecomp Pty Ltd. Mr McCrae has sufficient experience that is relevant to the style of mineralisation and type of deposit under consideration and to the activity being undertaken to qualify as a Competent Person as defined in the 2012 Edition of the "Australasian Code for Reporting of Exploration Results, Mineral Resources and Ore Reserves". Mr McCrae consents to the inclusion in the report of the matters based on his information in the form and context in which it appears.

Mineral Resource Estimate Mount Mackenzie

The information in this report that relates to mineral resource estimation for the Mt. McKenzie Gold deposit is based on work completed by Mr. Stephen Hyland, a Competent Person and Fellow of the AusIMM. Mr. Hyland is Principal Consultant Geologist with Hyland Geological and Mining Consultants (HGMC), who is a Fellow of the Australian Institute of Mining and Metallurgy and holds relevant qualifications and experience as a qualified person for public reporting according to the JORC Code in Australia. Mr Hyland is also a Qualified Person under the rules and requirements of the Canadian Reporting Instrument NI 43-101. Mr Hyland consents to the inclusion in this report of the information in the form and context in which it appears.

Exploration

The information in this document that relates to mineral exploration and exploration targets is based on work compiled under the supervision of Mr Tom Bartschi, a member of the Australian Institute of Geoscientists (AIG). Mr Bartschi is QMines' principal geologist and has sufficient experience relevant to the style of mineralisation and type of deposit under consideration and to the activity that he is undertaking to qualify as a Competent Person as defined in the 2012 Edition of the 'Australasian Code for Reporting of Exploration Results, Mineral Resources and Ore Reserves' (JORC 2012 Mineral Code). Mr Bartschi consents to the inclusion in this document of the exploration information in the form and context in which it appears.



Ore Reserve Estimate - Mt Chalmers

Deposit ¹	Reserve Category	Tonnes (Mt)	Cut Off (% Cu)	Cu (%)	Au (g/t)	Zn (%)	Ag (g/t)	S (%)
Mt Chalmers	Proven	5.1	0.3%	0.72	0.58	0.25	4.70	5.80
Mt Chalmers	Probable	4.5	0.3%	0.57	0.37	0.29	5.50	3.60
Total¹		9.6	0.3%	0.65	0.48	0.27	5.20	4.30

Mineral Resource Estimate - Mt Chalmers

Deposit ²	Resource Category	Tonnes (Mt)	Cut Off (% Cu)	Cu (%)	Au (g/t)	Zn (%)	Ag (g/t)	S (%)
Mt Chalmers	Measured	4.2	0.3%	0.89	0.69	0.23	4.97	5.37
Mt Chalmers	Indicated	5.8	0.3%	0.69	0.28	0.19	3.99	3.77
Mt Chalmers	Inferred	1.3	0.3%	0.60	0.19	0.27	5.41	2.02
Total¹		11.3	0.3%	0.75	0.42	0.23	4.60	4.30

Mineral Resource Estimate - Develin Creek

Deposit	Resource Category	Tonnes (Mt)	Cut Off (% Cu)	Cu (%)	Zn (%)	Au (g/t)	Ag (g/t)	Not in Mine Plan
Develin Creek	Indicated	2.90	0.3%	1.09	0.98	0.15	6.04	
Develin Creek	Inferred	1.23	0.3%	0.81	1.58	0.16	6.00	
Total²		4.13	0.3%	1.07	1.16	0.15	6.02	

Mineral Resource Estimate - Woods Shaft

Deposit ³	Resource Category	Tonnes (Mt)	Cut Off (% Cu)	Cu (%)	Au (g/t)	Zn (%)	Ag (g/t)	Not in Mine Plan
Woods Shaft	Inferred	0.54	0.3%	0.50	0.95	-	-	
Total³		0.54	0.3%	0.50	0.95	-	-	

Mineral Resource Estimate – Mt Mackenzie

Deposit ⁴	Resource Category	Tonnes (Mt)	Cut Off (g/t Au) *	Cu (%)	Au (g/t)	Zn (%)	Ag (g/t)	Not in Mine Plan
Mt Mackenzie	Indicated	2.27	0.50/0.7g/t	-	1.38	-	9.6	
Mt Mackenzie	Inferred	1.08	0.50/0.7g/t	-	1.45	-	5.8	
Total⁴		3.35	0.50/0.7g/t	-	1.40	-	8.4	

*0.5g/t Au cut-off grade for oxide, 0.7 g/t Au cut-off grade for fresh

¹ ASX Announcement – *Mt Chalmers PFS Supports Viable Copper & Gold Mine*, 30 April 2024. Rounding errors may occur.

² ASX Announcement – *Develin Creek Resource Upgrade Improves Growth & Development Potential*, 12 March 2025. Rounding errors may occur.

³ ASX Announcement - *Maiden Woods Shaft Resource*, 22 November 2022. Rounding errors may occur.

⁴ ASX Announcement - *Resource Upgrade At Mount Mackenzie Gold & Silver Project*, 9 July 2025. Rounding errors may occur.



About QMines

QMiner Limited (**ASX:QML**) is a Queensland focused copper and gold exploration and development Company. The Company owns 100% of the Mt Chalmers (copper-gold) and Develin Creek (copper-zinc) deposits, located within 90km of Rockhampton in Queensland.

Mt Chalmers is a high- grade historic mine that produced 1.2Mt @ 2.0% Cu, 3.6g/t Au and 19g/t Ag between 1898-1982.

Projects & Ownership

Mt Chalmers	 100%
Develin Creek	 100%
Mt Mackenzie	 100%

QMiner Limited

ACN 643 312 104

ASX:QML

**Unlisted
Options**

10,750,000

**Shares
on Issue**

436,401,985

Following several resource updates, Mt Chalmers and Develin Creek now have Measured, Indicated and Inferred Resources (JORC 2012) of **15.5Mt @ 0.82% Cu, 0.35g/t Au, 0.47% Zn & 5g/t Ag**.¹

QMiner's objective is to make new discoveries, commercialise existing deposits and transition the Company towards sustainable copper production.

Directors & Management

Andrew Sparke
Executive Chairman

Peter Caristo
Non-Executive Director
(Technical)

Tom Bartschi
Senior Geologist

James Anderson
General Manager
Operations

Elissa Hansen
Non-Executive
Director & Company
Secretary

Compliance Statement

With reference to previously reported Exploration results and mineral resources, the Company confirms that it is not aware of any new information or data that materially affects the information included in the original market announcement and, in the case of estimates of Mineral Resources or Ore Reserves, that all material assumptions and technical parameters underpinning the estimates in the relevant market announcement continue to apply and have not materially changed. The company confirms that the form and context in which the Competent Person's findings are presented have not been materially modified from the original market announcement.

¹. ASX Announcement – [Develin Creek Resource Upgrade](#). 12 March 2025.

Contacts

Registered Address

Suite J, 34 Suakin Drive,
Mosman NSW 2088

Postal Address

PO Box 36, Mosman NSW 2088

Telephone

+ 61 (2) 8915 6241

Email

info@qmines.com.au

Website

qmines.com.au

Peter Nesvada

Investor Relations
peter@qmines.com.au

Andrew Sparke

Executive Chairman
andrew@qmines.com.au



ASX:QML

QMINES

Sustainable
Australian
Copper

qmines.com.au

JORC CODE, 2012 EDITION – TABLE 1

Section 1 Sampling Techniques and Data

(Criteria in this section apply to all succeeding sections.)

Criteria	JORC Code explanation	Commentary
Sampling techniques	<ul style="list-style-type: none"> Nature and quality of sampling (e.g. cut channels, random chips, or specific specialised industry standard measurement tools appropriate to the minerals under investigation, such as down hole gamma sondes, or handheld XRF instruments, etc.). These examples should not be taken as limiting the broad meaning of sampling. Include reference to measures taken to ensure sample representivity and the appropriate calibration of any measurement tools or systems used. Aspects of the determination of mineralisation that are Material to the Public Report. In cases where 'industry standard' work has been done this would be relatively simple (e.g. 'reverse circulation drilling was used to obtain 1 m samples from which 3 kg was pulverised to produce a 30 g charge for fire assay'). In other cases more explanation may be required, such as where there is coarse gold that has inherent sampling problems. Unusual commodities or mineralisation types (e.g. submarine nodules) may warrant disclosure of detailed information. 	<ul style="list-style-type: none"> The majority of samples for grade estimation came from 5.25-inch percussion drillholes, with smaller contributions from 5.5-inch reverse circulation (RC) drilling and minor HQ3/NQ2 core drilling. Percussion and RC samples were typically collected at 1–2 m intervals, while core samples were generally 1 m or shorter where lithology or alteration changed. The resource database for the Mount Mackenzie deposit area totals 619 drillholes for 59707m of drilling as follows : <ul style="list-style-type: none"> 23 DDH Holes for 2364m, 23 Percussion holes with NQ Diamond Tails for 16278m, 440 DTH Percussion holes for 27282m and 120 RC Holes for 17417m MMM drilling MMRC665-677 and MMRC679, plus MMDD678 and MMDD680 13 RC Holes for 1146m, and 2 DDH Holes for 120m MMM RC samples (MMRC665–MMRC677 & 679) were collected every metre using a three-tier riffle splitter beneath the cyclone, with mostly dry, free-flowing samples. Earlier RC samples (PDH83–PDH160 and MMRC613–MMRC664) were collected every metre using either an agitating cyclone with self-splitting or a manual 50/50 splitter. Pre-MMM percussion samples were recovered via a surface casing diverter into an onboard cyclone; after each 1–2 m run, the hole was air bailed, and dry samples were riffle split into a 3–5 kg lab sample and 1 kg reference. Wet samples were drained, dewatered, and scooped for lab sampling, though some fine loss occurred. No specialized sampling tools were used. As standard practice, entire drilled intervals were sampled and tested, though some early holes were selectively assayed based on logging data (e.g. material above the Copper Mine Tuff unconformity may not have been tested). Full sampling and assay details are provided in supporting documentation. Reverse circulation and core drilling produced 1 m samples, with 3–5 kg collected and pulverized to generate a 50 g charge for fire assay (AAS

Criteria	JORC Code explanation	Commentary
		finish) and a 30 g charge for multi-element analysis via ICP or acid digestion. DTH percussion drilling used 2 m composite samples, also pulverized for a 30 g fire assay charge; sample masses were undocumented but estimated at 3–5 kg. Most testing for both Pre and MMM drilling was conducted by ALS, using methods PM209 and AA26 for gold, and IC580 or ICP61 for multi-element analysis.
Drilling techniques	<ul style="list-style-type: none"> • Drill type (e.g. core, reverse circulation, open-hole hammer, rotary air blast, auger, Bangka, sonic, etc.) and details (e.g. core diameter, triple or standard tube, depth of diamond tails, face-sampling bit or other type, whether core is oriented and if so, by what method, etc.). 	<ul style="list-style-type: none"> • Exploration results are based on drilling programs using HQ/NQ core, reverse circulation (RC), and open hole DTH percussion methods. MMM RC drilling used 5.25" or 5.5" face sampling hammers, while Pre-MMM percussion drilling used a standard 5.25" DTH hammer. Early RC drilling likely used conventional hammers, though records are unclear. Pre-collars and surface casing were mostly 6" and set 3–8 m below surface. • Recent core holes were oriented, and RC holes surveyed using a gyroscope. Pre-MMM RC holes (MMRC614–664) were surveyed with Humphrey or Eastman cameras. Boreholes PDH538–PDH612 were also directionally surveyed, though documentation describing the method used is not available.
Drill sample recovery	<ul style="list-style-type: none"> • Method of recording and assessing core and chip sample recoveries and results assessed. • Measures taken to maximise sample recovery and ensure representative nature of the samples. • Whether a relationship exists between sample recovery and grade and whether sample bias may have occurred due to preferential loss/gain of fine/coarse material. 	<ul style="list-style-type: none"> • Core recoveries for all diamond drill holes (DDH) were measured linearly, not by mass. MMM RC recoveries were estimated qualitatively based on geologist observations and sample bag volumes, with sample masses logged in the field and rechecked at the lab. Pre-MMM percussion and RC recoveries were not systematically recorded, though occasional notes mention "good" or "poor" recovery. • RC drilling involved continuous 1 m sampling using a three-way splitter under the cyclone or a two-way self-splitting cyclone, with equipment cleaned between samples. For MMM drilling, any sample recovery variance was flagged to drillers in real time. HQ triple tube coring was used to maximize DDH core recovery. • No relationship between sample recovery and grade demonstrating bias has been identified at this stage.
Logging	<ul style="list-style-type: none"> • Whether core and chip samples have been geologically and geotechnically logged to a level of detail to support appropriate Mineral Resource estimation, mining studies and metallurgical studies. • Whether logging is qualitative or quantitative in nature. Core (or costean, channel, etc.) photography. • The total length and percentage of the relevant intersections logged. 	<ul style="list-style-type: none"> • All bores were geologically logged with sufficient detail for resource estimation, recording lithology, alteration, mineralisation, and weathering. Cored holes also include logging of anisotropies such as joints, fractures, and veins. • Logging is qualitative and descriptive. Core photography was routinely done only for post-1999 drilling. Chip trays from all percussion and RC holes, along with remnant core, have been retained for reference.

Criteria	JORC Code explanation	Commentary
Sub-sampling techniques and sample preparation	<ul style="list-style-type: none"> • If core, whether cut or sawn and whether quarter, half or all core taken. • If non-core, whether riffled, tube sampled, rotary split, etc. and whether sampled wet or dry. • For all sample types, the nature, quality and appropriateness of the sample preparation technique. • Quality control procedures adopted for all sub-sampling stages to maximise representivity of samples. • Measures taken to ensure that the sampling is representative of the in-situ material collected, including for instance results for field duplicate/second-half sampling. • Whether sample sizes are appropriate to the grain size of the material being sampled. 	<ul style="list-style-type: none"> • Approximately 100% of drilled intervals were logged, with intervals of no recovery clearly noted in logs and sample registers. • Core samples were half-split lengthwise for assay, while entire cores were used for selected metallurgical testing. • MMM RC samples were collected using a three-way riffle splitter (1 m, ~3 kg). Pre-MMM RC samples (PDH83–PDH160) used a self-splitting cyclone (~5 kg), and percussion samples were manually riffle split (~3–5 kg). Most samples were dry, as logged. • Field sub-sampling procedures for RC and DDH were generally industry standard. However, dewatering of wet Pre-MMM DTH percussion samples may have caused fine loss and introduced bias, though such intervals are a small portion of the database. • All laboratory preparation followed standard procedures. MMM samples were processed at ALS Townsville; Pre-MMM samples were processed at ALS Brisbane (DDH1–PDH612) and Townsville (MMRC613–MMRC664). ALS procedures included drying, crushing to <5 mm, and pulverizing to >85% passing 75 µm. • MMM RC QA/QC included blanks and duplicates inserted at ~1 per 20 m. Duplicates were created via cone-and-quartering; blanks were non-mineralized gravel with a distinct signature. • Pre-MMM RC QA/QC (MMRC613–664) included standards (typically one per hole) and duplicates (one per 30–50 m). No documented QA/QC processes exist for Pre-MMM percussion drilling. • Field duplicates were collected at 1 m intervals and monitored by the principal consultant. ALS also included internal QA/QC with blanks and certified reference materials; no significant issues were noted. • Microscopy and metallurgical work show gold is fine-grained; no coarse gold observed. The 5.25–5.5" hole diameter and 3–5 kg sample size over 1–2 m intervals is industry standard and appropriate for the mineralization style.
Quality of assay data and laboratory tests	<ul style="list-style-type: none"> • The nature, quality and appropriateness of the assaying and laboratory procedures used and whether the technique is considered partial or total. • For geophysical tools, spectrometers, handheld XRF instruments, etc., the parameters used in determining the analysis including instrument make and model, reading times, calibrations factors applied and their derivation, etc. • Nature of quality control procedures adopted (e.g. standards, blanks, duplicates, external laboratory checks) and whether acceptable levels 	<ul style="list-style-type: none"> • MMM drilling used a 50 g charge for gold fire assay with ICP-AES (AA26), and 30 g sub-samples for 33-element analysis via 4-acid digest and ICP-AES. Over-limit results were re-assayed using suitable methods. • Pre-MMM drilling used 30 g fire assays with AAS finish for gold (PM209) and acid digestion for multi-element analysis (IC580), standard practice in the 1980s–90s. Gold assay methods are considered total. • No additional field based geophysical tools, spectrometers or handheld XRF instruments were used or relied upon for assay or laboratory QA/QC purposes.

Criteria	JORC Code explanation	Commentary
	of accuracy (i.e. lack of bias) and precision have been established.	<ul style="list-style-type: none"> ALS currently applies QA/QC with certified reference materials, blanks, splits, and replicates; each 40-sample batch includes a blank, two replicates, and two standards. Barcoding ensures full chain-of-custody. ALS QA/QC protocols for Pre-MMM testing are undocumented, but repeat assays (especially for high-grade intervals) are present in the dataset
Verification of sampling and assaying	<ul style="list-style-type: none"> The verification of significant intersections by either independent or alternative company personnel. The use of twinned holes. Documentation of primary data, data entry procedures, data verification, data storage (physical and electronic) protocols. Discuss any adjustment to assay data. 	<ul style="list-style-type: none"> All sampled intersections are verified by the on-site geologist and subsequently checked by Geko-Co's principal consultant using drillhole metadata and QA/QC records. Final results are reviewed by MMM's exploration manager. Early mineralised intercepts have been validated through infill, extensional, and confirmatory drilling by multiple operators, including MMM. There is no use of twinned holes at the Mt. McKenzie Area and any effects therein are not applicable. Primary data was collected in the field by the site geologist and technician, with lithological logging recorded digitally and sample data logged on field sheets. Data was digitized, validated against assay files, and reviewed by the principal geologist. Field and digital records are maintained, with data stored and error-checked in Explorer 3 software. Pre-MMM data was sourced from previous operators and, where possible, verified against historical reports lodged with regulators. <p>The available analytical data is not adjusted</p>
Location of data points	<ul style="list-style-type: none"> Accuracy and quality of surveys used to locate drill holes (collar and down-hole surveys), trenches, mine workings and other locations used in Mineral Resource estimation. Specification of the grid system used. Quality and adequacy of topographic control. 	<ul style="list-style-type: none"> All MMM drillhole collars were surveyed in the field by Terrex Spatial using RTK GPS referenced to a state control mark, with an accuracy of ± 0.05 m in both horizontal and vertical axes. Boreholes were re-surveyed post-drilling. Pre-MMM drillholes were located using a local grid via total station or transit traverse, with coordinates later transformed to AMG66 (1999) and GDA94 (2015). A 2015 check survey of 230 historic holes found position discrepancies of a few cm to 5 m, attributed to grid transformation errors. MMM downhole surveys were conducted using a Surtron gyroscope ($\pm 0.25^\circ$ azimuth, $\pm 0.05^\circ$ inclination). Eight holes were fully surveyed; five were surveyed 58–83% of total depth. Earlier holes (MMRC614–665, PDH538–612) were surveyed using Eastman or Humphrey cameras, though accuracy is not recorded. The grid system is GDA94 Zone 55; azimuths are magnetic with an 8.812° declination correction. Collar RLs and surface elevations were used to create a Digital Terrain Model (DTM). For the North Knoll area, a 2015 Terrex DTM was used;

Criteria	JORC Code explanation	Commentary
		elsewhere, a 2007 UTS Geophysics aerial survey DTM (± 2.5 m accuracy) was applied. Small elevation differences exist between the two DTMs but are within stated tolerances.
Data spacing and distribution	<ul style="list-style-type: none"> Data spacing for reporting of Exploration Results. Whether the data spacing and distribution is sufficient to establish the degree of geological and grade continuity appropriate for the Mineral Resource and Ore Reserve estimation procedure(s) and classifications applied. Whether sample compositing has been applied. 	<ul style="list-style-type: none"> Exploration data spacing ranges from 5 m to 50 m. The spacing and orientation are sufficient to define geological and grade continuity appropriate for the applied resource classifications. <p>Drillhole samples were not composited prior to assay; samples <2 m were composited to 2 m after assaying for resource estimation.</p>
Orientation of data in relation to geological structure	<ul style="list-style-type: none"> Whether the orientation of sampling achieves unbiased sampling of possible structures and the extent to which this is known, considering the deposit type. If the relationship between the drilling orientation and the orientation of key mineralised structures is considered to have introduced a sampling bias, this should be assessed and reported if material. 	<ul style="list-style-type: none"> Drillholes were generally oriented appropriately to the principal mineralisation, which dips 60–80° west-southwest, with some vertical holes intersecting steep zones. Due to high drill density and well-defined mineralised extents, no significant sampling bias is expected from drill orientation.
Sample security	<ul style="list-style-type: none"> The measures taken to ensure sample security. 	<ul style="list-style-type: none"> For MMM samples, field teams matched samples to records, sealed them in numbered plastic bags, secured them in bulker bags with submission sheets, and sent them directly to ALS Townsville via a transport contractor. ALS verified the manifest, barcoded, and tracked samples throughout analysis. Pre-MMM samples were placed in pre-numbered calico bags, tied, and packed into taped poly-weave sacks for transport to ALS Brisbane or Townsville.
Audits or reviews	<ul style="list-style-type: none"> The results of any audits or reviews of sampling techniques and data. 	<ul style="list-style-type: none"> No audits or reviews of sampling techniques have been conducted to date.

Section 2 Reporting of Exploration Results

(Criteria listed in the preceding section also apply to this section.)

Criteria	JORC Code explanation	Commentary
Mineral tenement and land tenure status	<ul style="list-style-type: none"> Type, reference name/number, location and ownership including agreements or material issues with third parties such as joint ventures, partnerships, overriding royalties, native title interests, historical sites, wilderness or national park and environmental settings. The security of the tenure held at the time of reporting along with any known impediments to obtaining a licence to operate in the area. 	<ul style="list-style-type: none"> The assessment area lies entirely within MDL2008, a mineral development license held 100% by Mount Mackenzie Mines (MMM), a subsidiary of Resources and Energy Group (REG). The tenement area land is free of Native Title claims, strategic reserve, cropping, wilderness, or protected landscape restrictions. It is understood by HGMC that at time of reporting the tenement is in good standing with no known impediments to operations under current license and environmental conditions. The reader should seek tenement ownership information from those tasked with reporting on legal matters.
Exploration done by other parties	<ul style="list-style-type: none"> Acknowledgment and appraisal of exploration by other parties. 	<ul style="list-style-type: none"> The tenement was previously held under a joint venture between Smarttrans (formerly Coolgardie Gold) and Australian Reproductive Health Services (formerly Marlborough Gold Mines). Over time, multiple companies formed joint ventures over EPM10006, including Australian Consolidated Exploration (1975–76), Utah Development (1981–82), Peabody (1984–85), Freeport McMoran (1987–89), Dragon Mining (1995), Coolgardie Gold/SmartTrans (1997–2014), Jeteld (2002–06), and Newcrest Mining (2007–08).
Geology	<ul style="list-style-type: none"> Deposit type, geological setting and style of mineralisation. 	<ul style="list-style-type: none"> High-sulphidation epithermal gold deposit of Late Carboniferous age, associated with the Connors Magmatic Arc in Queensland's New England Fold Belt.
Drill hole Information	<ul style="list-style-type: none"> A summary of all information material to the understanding of the exploration results including a tabulation of the following information for all Material drill holes: <ul style="list-style-type: none"> easting and northing of the drill hole collar elevation or RL (Reduced Level – elevation above sea level in metres) of the drill hole collar dip and azimuth of the hole down hole length and interception depth hole length. If the exclusion of this information is justified on the basis that the information is not Material and this exclusion does not detract from the understanding of the report, the Competent Person should clearly explain why this is the case. 	<ul style="list-style-type: none"> All previous drilling relevant to providing material context to the current estimate have been used. No new exploration results relating to the Mt Mackenzie deposits are reported in this release.

Criteria	JORC Code explanation	Commentary
Data aggregation methods	<ul style="list-style-type: none"> In reporting Exploration Results, weighting averaging techniques, maximum and/or minimum grade truncations (e.g. cutting of high grades) and cut-off grades are usually Material and should be stated. Where aggregate intercepts incorporate short lengths of high-grade results and longer lengths of low-grade results, the procedure used for such aggregation should be stated and some typical examples of such aggregations should be shown in detail. The assumptions used for any reporting of metal equivalent values should be clearly stated. 	<ul style="list-style-type: none"> Tabulated intervals include all sections within mineralisation wireframes used for resource estimation. Grades were calculated as linear weighted averages without top cuts. A 0.3 g/t Au lower cut-off was applied, allowing up to 2 m of internal dilution below this threshold. Silver grades were reported as linear weighted averages over corresponding gold intervals, with no cut-off applied. Higher-grade sub-intervals may exist within broader mineralised zones. No assumptions were used for any reporting of metal equivalent grades at this stage and are therefore not applicable.
Relationship between mineralisation widths and intercept lengths	<ul style="list-style-type: none"> These relationships are particularly important in the reporting of Exploration Results. If the geometry of the mineralisation with respect to the drill hole angle is known, its nature should be reported. If it is not known and only the down hole lengths are reported, there should be a clear statement to this effect (e.g. 'down hole length, true width not known'). 	<ul style="list-style-type: none"> Mineralisation at North Knoll trends northwest with a westerly dip; recent drilling was oriented perpendicular to this trend. At South West Slopes, mineralisation also trends northwest but dips steeply to sub-vertical west. Sample intervals are downhole lengths. At North Knoll, these reasonably represent mineralisation widths. At South West Slopes, vertical drilling means intercepts may not reflect true thickness, which is addressed during wireframing for resource estimation.
Diagrams	<ul style="list-style-type: none"> Appropriate maps and sections (with scales) and tabulations of intercepts should be included for any significant discovery being reported. These should include, but not be limited to a plan view of drill hole collar locations and appropriate sectional views. 	<ul style="list-style-type: none"> Appropriately scaled plans and sections are included in the body of the report
Balanced reporting	<ul style="list-style-type: none"> Where comprehensive reporting of all Exploration Results is not practicable, representative reporting of both low and high grades and/or widths should be practiced to avoid misleading reporting of Exploration Results. 	<ul style="list-style-type: none"> Comprehensive reporting of all material data has been reported appropriately and attention to relative scale and levels of verifiable precision.
Other substantive exploration data	<ul style="list-style-type: none"> Other exploration data, if meaningful and material, should be reported including (but not limited to): geological observations; geophysical survey results; geochemical survey results; bulk samples – size and method of treatment; metallurgical test results; bulk density, groundwater, geotechnical and rock characteristics; potential deleterious or contaminating substances. 	<ul style="list-style-type: none"> A previously released <i>resource upgrade</i> report by REZ (May 2020) details geological observations, past investigations, geochemistry, and geophysical survey results.
Further work	<ul style="list-style-type: none"> The nature and scale of planned further work (e.g. tests for lateral extensions or depth extensions or large-scale step-out drilling). Diagrams clearly highlighting the areas of possible extensions, including the main geological interpretations and future drilling areas, provided this information is not commercially sensitive. 	<ul style="list-style-type: none"> Extensional drilling Validation drilling Further metallurgical testing

Section 3 Estimation and Reporting of Mineral Resources

(Criteria listed in section 1, and where relevant in section 2, also apply to this section.)

Criteria	JORC Code explanation	Commentary
Database integrity	<ul style="list-style-type: none"> Measures taken to ensure that data has not been corrupted by, for example, transcription or keying errors, between its initial collection and its use for Mineral Resource estimation purposes. Data validation procedures used. 	<ul style="list-style-type: none"> Pre-MMM drilling data was compiled by Terrasearch using Explorer3 software, with re-logging and data standardisation. A separate mid-2000s JV database was later reviewed by Geko-Co and merged after random checks. Historic collar positions were verified in the field using GPS, with accuracy within 0.5–4 m. For MMM drilling, sample records were created in the field, checked by the supervising geologist, digitised, and validated against ALS assay data. QA/QC samples were reviewed for sequencing accuracy. Data was managed in Explorer3, exported to Microsoft Access for resource estimation, and visually checked using Gemcom Xplorpac and Geosoft Target. Martlet performed additional validation for errors like missing or duplicate intervals and survey deviations. MMM results were compared with nearby Pre-MMM holes, showing good consistency, supporting the reliability of historic data.
Site visits	<ul style="list-style-type: none"> Comment on any site visits undertaken by the Competent Person and the outcome of those visits. If no site visits have been undertaken indicate why this is the case. 	<ul style="list-style-type: none"> HGMC has not as yet carried out a site visit to the Develin Creek location. HGMC has some familiarity with the terrane and has previously carried out a site visit in October 2022 to the Mt. Chalmers Mine also operated by QMines in the same local region.
Geological interpretation	<ul style="list-style-type: none"> Confidence in (or conversely, the uncertainty of) the geological interpretation of the mineral deposit. Nature of the data used and of any assumptions made. The effect, if any, of alternative interpretations on Mineral Resource estimation. The use of geology in guiding and controlling Mineral Resource estimation. The factors affecting continuity both of grade and geology. 	<ul style="list-style-type: none"> Mount Mackenzie is a high-sulphidation epithermal system with extensive work since the 1980s supporting current interpretations. Resource estimation was based on broad mineralisation envelopes derived from geochemistry, alteration, and lithological logging. Interpretation used historic and 2015 drill data, including logging, assays, and prior models. An inverse relationship between gold and manganese guided inclusion of some low-gold zones based on low manganese values. Drill collars were aligned to topography before interpretation. A single resource model was developed through sectional and 3D interpretation, consistent with past interpretations. No alternative model significantly changes the overall resource. Mineralisation is controlled by pre-mineralisation permeability and post-mineralisation structural features, with no distinct boundaries. Multiple mineralisation envelopes constrained the estimate. Grade distribution is linked to lithological and structural permeability. The area has undergone multiple deformation phases, with NW-trending dextral faulting possibly offsetting mineralisation. The Coppermine Tuff unconformity is post-gold and dips west. In low drill-density areas,

Dimensions	<ul style="list-style-type: none"> The extent and variability of the Mineral Resource expressed as length (along strike or otherwise), plan width, and depth below surface to the upper and lower limits of the Mineral Resource. 	<p>mineralisation was extrapolated up to half the typical hole spacing.</p>
Estimation and modelling techniques	<ul style="list-style-type: none"> The nature and appropriateness of the estimation technique(s) applied and key assumptions, including treatment of extreme grade values, domaining, interpolation parameters and maximum distance of extrapolation from data points. If a computer assisted estimation method was chosen include a description of computer software and parameters used. The availability of check estimates, previous estimates and/or mine production records and whether the Mineral Resource estimate takes appropriate account of such data. The assumptions made regarding recovery of by-products. Estimation of deleterious elements or other non-grade variables of economic significance (eg sulphur for acid mine drainage characterisation). In the case of block model interpolation, the block size in relation to the average sample spacing and the search employed. Any assumptions behind modelling of selective mining units. Any assumptions about correlation between variables. Description of how the geological interpretation was used to control the resource estimates. Discussion of basis for using or not using grade cutting or capping. The process of validation, the checking process used, the comparison of model data to drill hole data, and use of reconciliation data if available. 	<ul style="list-style-type: none"> The SW Slopes Resource is a single zone measuring 420m × 200m × 120m. The North Knoll Resource comprises multiple zones ranging from 50 m × 30m × 20m to 350m × 180m × 100m. Four broad sets of wireframe envelopes (zones) representing the Mt. McKenzie Gold (Au) mineralisation areas. These were interpreted based on the 0.3g Au/t delineation cut-off and adjusted according to localised anomalous Silver (Ag) and Copper (Cu) distribution changes. These 4 mineralisation zones were further subdivided into 14 AREA domains describing local changes in mineralisation geometry and orientation. HGMC has designated historically named 'North Knoll' zone as ZONE=1 and as the 'Southern Slope' zones as ZONE=2. ZONE=3 and 4 is comprised of the other remaining peripheral zones at depth and towards the South. All drill-hole assays were composited to 2m down-hole composites for normalisation and sample support. The spatial distribution of mineralisation within most wireframes and local AREA sub-domains is relatively predictable with relatively moderate coefficient of variation composite populations observed for the main Gold (Au) item. A small distance restriction to outlier grades for all analytical elements was applied to mitigate excessive extrapolation of high grades particularly in zones of low drilling density. The outlier grade threshold used for the distance restriction was applied at approximately the 98th percentile level. The Distances of restriction applied were derived from observations of downhole variography and used an approximate two times multiple of variogram range for the distance restriction. Variograms were modelled for each of the 14 AREA domains where possible or selected combined AREA domains where composite numbers were relatively low. Typical down-hole of 4.0m → 9.6m for Au, 5.6m → 8.4m for Ag and 6.0m → 9.2m for Cu. A 3D block model was generated using uniform block sizes with an associated Block Percentage value (~1% precision) to account to contained wire-frame volumes. The Block Size (SMU) selected is 4m x 5m x 2.5 m size and represents a compromise to accommodate mineralisation zone size and complexity and also drilling / sampling density. Interpolation was carried out separately for analytical items for Au(g/t), Cu(ppm), Pb(ppm), Zn(ppm), Ag(g/t) and As(ppm) utilised 2m down-hole

drill composites.

- Block grades were estimated using Ordinary Kriging using a single pass searches approach and a primary oriented search ellipsoid of 50m x 80m x 60m.
- Interpolation used a maximum of 24 composites and a maximum of 3 composite per drill hole.
- HGMC confirms that Gold is not strongly correlated with Copper (Cu), Lead (Pb), Zinc (Zn) or Arsenic (As). Gold appears to be show some correlation with Silver (Ag) but it is not strong.
- Though some anomalous Copper (Cu), Lead (Pb) Zinc (Zn), and Silver (Ag) grades are present these are not likely to hold any significant economic importance at this stage. The Silver (Ag) concentration present is likely can be recovered and will contribute towards the economic extraction of Gold (Au).
- The most recent previous resource estimate carried out historically used a nominal 0.3g Au/t delineation lower cut-off for interpretation which can be considered a level that is appropriate for a particular 'instance' in time and is dependent upon any given set of metal price and mineral processing and mineral recoveries at that time. Previously the total combined resource estimate using a 0.3g Au/t lower-cut-off reporting basis used by Resources and Energy Group Limited was :

3.42 Mt @ 1.18g g/t Au and 9.0 g/t Ag

The new HGMC estimate using a similar 0.3g Au/t lower cut-off reporting basis is :

4.49 Mt @ 1.180% g/t Au and 7.55 g/t Ag

This is an approximate ~30% increase in tonnage with similar Au and slightly lower Ag grades being observed. Most of the tonnage increase is related to increased mineralisation volume changes following modelling all anomalous mineralisation that shows continuity above the 0.3g Au/t delineation cut-off level. Some tonnage increase is due to a small increase in bulk density values used particularly for the fresh / sulphide zones.

- No mining has been carried out within the Mt. McKenzie deposit to date.
- A limited number of assumptions have been made with respect to the recovery of by-products or individual metal species independently and it is expected that future refinement of these will follow metallurgical testing programs.

	<ul style="list-style-type: none"> No acid mine drainage or deleterious element studies have yet been commissioned. The Develin Creek block model was validated by several methods, including visual validations on-screen, global statistical comparisons, trend analysis and SWATH plots.
Moisture	<ul style="list-style-type: none"> Whether the tonnages are estimated on a dry basis or with natural moisture, and the method of determination of the moisture content. The tonnages are estimated on a dry basis. There is as yet no direct in-situ measurement data is used to assign a likely in-situ moisture content to any future mining production tonnages..
Cut-off parameters	<ul style="list-style-type: none"> The basis of the adopted cut-off grade(s) or quality parameters applied. The classified Mineral Resource is reported beneath the current surface DTM topography consisting of tertiary cap surfaces. All reporting of Resources is aligned using a Gold (Au) lower cut-off basis suitable for any future ore definition in an open pit mining and processing. This reasonably reflects the likely economic metal values and likely operating costs expected for processing from a standard CIP plant to produce Gold and beneficial Silver bullion products.
Mining factors or assumptions	<ul style="list-style-type: none"> Assumptions made regarding possible mining methods, minimum mining dimensions and internal (or, if applicable, external) mining dilution. It is always necessary as part of the process of determining reasonable prospects for eventual economic extraction to consider potential mining methods, but the assumptions made regarding mining methods and parameters when estimating Mineral Resources may not always be rigorous. Where this is the case, this should be reported with an explanation of the basis of the mining assumptions made. The resource is estimated and reported principally with view to open pit mining basis assuming small-scale with standard milling and gold recovery by CIP/CIL. It may also be possible however to consider an appropriately scaled selective underground mining program aimed at some of the deeper mineralization. The resource estimate assumes free selection of blocks nominally in the order of ~4m x 4m x 2.5m bench blocks following higher definition resolution of mineralisation through the use of grade control drilling and / or blast-hole sampling. A minimum intercept with of 2m is used for modelling and estimation assuming open pit mining of ore could be undertaken on flitches down to 2.5m in height. No mining dilution or ore loss factors have applied to the Mineral Resource. Mineralisation Domain boundaries for mining are interpreted to be as low as a nominal 0.3g Au/t Gold (Au) lower cut-off which are also used as likely hard mining boundaries for preliminary reserves assessment.
Metallurgical factors or assumptions	<ul style="list-style-type: none"> The basis for assumptions or predictions regarding metallurgical amenability. It is always necessary as part of the process of determining reasonable prospects for eventual economic extraction to consider potential metallurgical methods, but the assumptions regarding metallurgical treatment processes and parameters made when reporting Mineral Resources may not always be rigorous. Where this is the case, this should be reported with an explanation of the basis of the metallurgical assumptions made. Resources and Energy Group Limited previously reported that recovery factors were assumed for the cut-off grade calculations and open pit optimisation are based on leach extractive test-work on 15 variability composites available at the time (May 2020), and 5 master composites which were prepared from HQ bore core.

<p>Environment al factors or assumptions</p>	<ul style="list-style-type: none"> Assumptions made regarding possible waste and process residue disposal options. It is always necessary as part of the process of determining reasonable prospects for eventual economic extraction to consider the potential environmental impacts of the mining and processing operation. While at this stage the determination of potential environmental impacts, particularly for a greenfields project, may not always be well advanced, the status of early consideration of these potential environmental impacts should be reported. Where these aspects have not been considered this should be reported with an explanation of the environmental assumptions made. 	<ul style="list-style-type: none"> No environmental impediments to the project are known. The primary material contains sulphide minerals in low quantities that would need to be contained during mining.
<p>Bulk density</p>	<ul style="list-style-type: none"> Whether assumed or determined. If assumed, the basis for the assumptions. If determined, the method used, whether wet or dry, the frequency of the measurements, the nature, size and representativeness of the samples. The bulk density for bulk material must have been measured by methods that adequately account for void spaces (vugs, porosity, etc), moisture and differences between rock and alteration zones within the deposit. Discuss assumptions for bulk density estimates used in the evaluation process of the different materials. 	<ul style="list-style-type: none"> Bulk density was estimated based on Archimedes method measurements carried out on 34 waxed core samples from two holes in the North Knoll zone; no measurements are available for SW Slopes. HGMC has used this information as the underlying bulk density assignment for the entire block model. The methods of measurements described by Resources and Energy Group Limited has accounted for voids; clay zones showed lower densities but were not spatially segregated thus average values were applied globally based on weathering and oxidation zone designation. Dry in situ bulk densities so assigned by HGMC for the main designated weathering / oxidation state material types are as follows : <ul style="list-style-type: none"> + Completely oxidized: 2.1 t/m³ + Partially oxidized: 2.5 t/m³ + Fresh: 2.85 t/m³
<p>Classification</p>	<ul style="list-style-type: none"> The basis for the classification of the Mineral Resources into varying confidence categories. Whether appropriate account has been taken of all relevant factors (ie relative confidence in tonnage/grade estimations, reliability of input data, confidence in continuity of geology and metal values, quality, quantity and distribution of the data). Whether the result appropriately reflects the Competent Person's view of the deposit. 	<ul style="list-style-type: none"> The Mineral Resource for the Mt. McKenzie has been classified as Indicated in areas where the drilling grid is in the order of 20x20m to 25x25m. Most of the Inferred resources is mineralised material outside of the Indicated resource zones where the drilling density is nominally greater than 25m x 25m and out to approximately 50m spacing. All classified resources are constrained by the Interpreted 3D mineralisation wire-frame. No resources have been extrapolated beyond the wire-frame boundaries. Indicated excludes material below a below a depth of 150m from Topographic surface to account for a lower likelihood of economic viability.
<p>Audits or reviews</p>	<ul style="list-style-type: none"> The results of any audits or reviews of Mineral Resource estimates. 	<ul style="list-style-type: none"> No external audits of the Mineral Resource estimate have been undertaken at this time. The resource model has been partially audited by QMines personnel as apart of operational optimisations and continuous improvement protocols.
<p>Discussion of relative</p>	<ul style="list-style-type: none"> Where appropriate a statement of the relative accuracy and confidence level in the Mineral Resource estimate using an approach or procedure deemed appropriate by the Competent Person. For example, the 	<ul style="list-style-type: none"> The relative accuracy of the Mineral Resource estimate is reflected in the reporting of the Mineral Resource as per the guidelines of the 2012 JORC Code.

**accuracy/
confidence**

application of statistical or geostatistical procedures to quantify the relative accuracy of the resource within stated confidence limits, or, if such an approach is not deemed appropriate, a qualitative discussion of the factors that could affect the relative accuracy and confidence of the estimate.

- The statement should specify whether it relates to global or local estimates, and, if local, state the relevant tonnages, which should be relevant to technical and economic evaluation. Documentation should include assumptions made and the procedures used.
- These statements of relative accuracy and confidence of the estimate should be compared with production data, where available.

- The relative accuracy of the Mineral Resource estimate is reflected in the classification of the Mineral Resource as Inferred and indicated when sufficiently drilled to 20m x 25m and out to 50m.
- Geostatistical methods to quantify the relative accuracy of the resource have not been undertaken.
- Historical drilling forms a large part of the data used to calculate the resource estimate. QA/QC procedures associated with this drilling were insufficient to form a view on their reliability. Resources and Energy Group Limited previously reported that confirmatory drilling by MMM suggested that a material bias is not likely in the North Knoll area.
- Collection of additional bulk density data could result in some small changes to local tonnages, however, a material impact on the global resource tonnage is unlikely.
- The cut-off used to determine the Mineral Resources was based on assumed mining and metallurgical factors that are preliminary in nature and require confirmation through feasibility work.
- The resource statement relates to the current global resource estimate.
- No significant previous mining has been carried out at Mt. McKenzie therefore statements of relative accuracy or confidence of resource estimates through mining reconciliation studies is not possible and therefore not applicable at this stage.