

## ASX ANNOUNCEMENT

31 May 2024

### **Key Stakeholder Consent to NT Acquisition Received**

Top End Energy Limited (**Top End** or the **Company**) (ASX:TEE) is pleased to provide an update on the acquisition of the granted Northern Territory (**NT**) acreage from wholly owned subsidiaries of Hancock Prospecting Limited (**Hancock**), first announced on 27 February 2024.

#### **HIGHLIGHTS**

- Consent has been received from the Northern Land Council (**NLC**) for the previously announced acquisition of granted NT acreage from Hancock
- NLC consent satisfies a critical condition for completion, with approval from the NT regulator being the final outstanding requirement
- Transaction remains on schedule for completion in June 2024

#### **UPDATE ON TRANSACTION AND PROGRESS TO COMPLETION**

On 27 February 2024, the Company announced the execution of a binding term sheet (the **Term Sheet**) to acquire NT Exploration Permits (**EP**) 144, 153 and 154 (the **Permits**) from Minerals Australia Pty Ltd and Jacaranda Minerals Limited, wholly owned subsidiaries of Hancock (together, the **Vendors**) (the **Transaction**). On 14 May 2024, the Company announced that it had entered into a full form Sales and Purchase Agreement (**SPA**) with the Vendors.

The Company and the Vendors have since received the consent of the NLC to the transfer of the titles pursuant to the terms of the existing Co-existence and Exploration Deeds with the Traditional Owners of the Permits. This consent represents satisfaction of a critical condition required for the Transaction.

Completion of the Transaction is now only pending approval from the NT regulator. The parties are engaging with the NT Government and expect to receive this approval in the coming weeks.

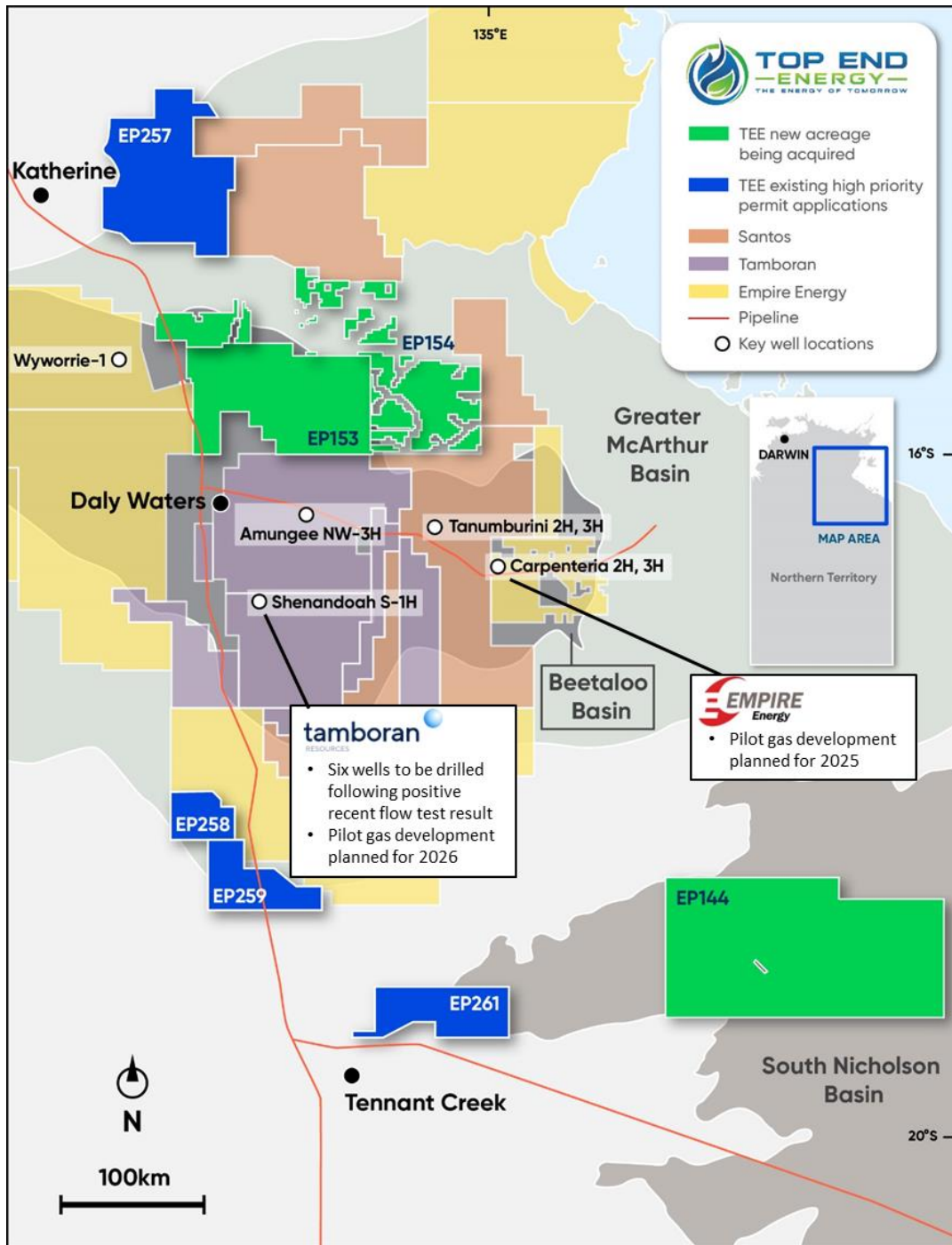
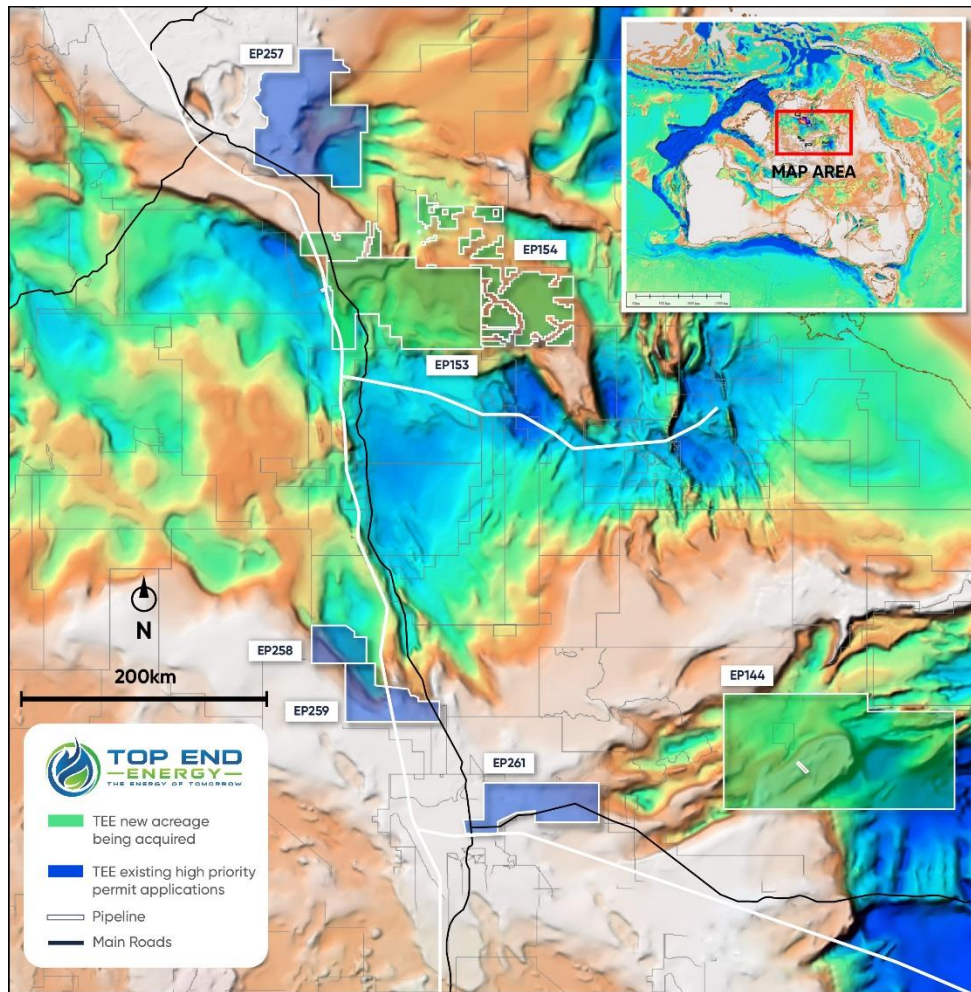


Figure 1: Acquired permits and Top End’s existing prioritised permit applications<sup>1</sup>

<sup>1</sup> Map legend refers to permit operators.



**Figure 2: Acquired permits overlying the Beetaloo and South Nicholson basins**

- END -

This announcement was authorised for release by the Board of Directors of Top End Energy Limited.

For more information please contact:

**Kelly Moore and Michelle Kennedy**  
**Joint Company Secretaries**  
**+61 8 6245 9836**  
[info@topendenergy.com.au](mailto:info@topendenergy.com.au)

### About Top End Energy Limited

Top End aims to be a leading Australian diversified energy provider at the forefront of the energy transition. Combining an attractive portfolio of granted and in-application petroleum permits across Australia, intending to pursue complementary clean energy solutions and achieve a target of net zero (Scope 1 and 2) emissions.

For further information on Top End Energy Limited please visit [www.topendenergy.com.au](http://www.topendenergy.com.au)