



# Exploring for a Sustainable Future

## AME Roundup Conference

January 2024



# Important Notice & Disclaimer



## Disclaimer

This presentation has been prepared by Trinex Minerals Limited. This document contains background information about Trinex Minerals current at the date of this presentation. The presentation is in summary form and does not purport to be all inclusive or complete. Recipients should conduct their own investigations and perform their own analysis in order to satisfy themselves as to the accuracy and completeness of the information, statements and opinions contained in this presentation.

This presentation is for information purposes only. Neither this presentation nor the information contained in it constitutes an offer, invitation, solicitation or recommendation in relation to the purchase or sale of Trinex Minerals shares in any jurisdiction. This presentation may not be distributed in any jurisdiction except in accordance with the legal requirements applicable in such jurisdiction. Recipients should inform themselves of the restrictions that apply in their own jurisdiction. A failure to do so may result in a violation of securities laws in such jurisdiction.

This presentation does not constitute investment advice and has been prepared without taking into account the recipient's investment objectives, financial circumstances or particular needs and the opinions and recommendations in this presentation are not intended to represent recommendations of particular investments to particular persons. Recipients should seek professional advice when deciding if an investment is appropriate. All securities transactions involve risks, which include (among others) the risk of adverse or unanticipated market, financial or political developments. To the fullest extent permitted by law, Trinex Minerals, its officers, employees, agents and advisers do not make any representation or warranty, express or implied, as to the currency, accuracy, reliability or completeness of any information, statements, opinions, estimates, forecasts or other representations contained in this presentation. No responsibility for any errors or omissions from this presentation arising out of negligence or otherwise is accepted. This presentation may include forward looking statements. Forward looking statements are only predictions and are subject to risks, uncertainties and assumptions which are outside the control of Trinex Minerals. Actual values, results or events may be materially different to those expressed or implied in this presentation.

Release authorized by Trinex Minerals Limited Managing Director, Will Dix.

## Competent Person's Statement

The information in this announcement that relates to exploration results is extracted from ASX Announcements titled:

- "Todd River Makes Transformational Lithium Acquisition in NWT, Canada" lodged on 27 September 2023
- "Successful Exploration Start for Ross Lake" lodged on 10 October 2023
- "Further Encouraging Results from Canadian Lithium Exploration" lodged on 30 October 2023
- "High Grade Lithium Confirmed at Ross Lake" lodged on 8 January 2024
- "Drilling update – Mt Hardy Base Metal Project" lodged on 14 November 2023

These announcements may be viewed at [www.trinexminerals.com.au](http://www.trinexminerals.com.au) and [www.asx.com.au](http://www.asx.com.au). The Company confirms that it is not aware of any new information or data that materially affects the information included in the original market announcements. The Company confirms that the form and context in which the Competent Person's findings are presented have not been materially modified from the original market announcement.

# Exploring for a Sustainable Future



## Canadian Lithium Prospectivity

TX3 has the **largest 100% owned landholding in the NWT on ASX** - over 500 km<sup>2</sup> of prospective claims



## Expert Major Shareholder

Dahrouge Group (~14% ownership) provides local exploration expertise



## Drill Ready Targets

Spodumene **confirmed** in pegmatites at **Ross Lake** which are **drill ready** subject to permitting



## Active Exploration Program

Follow up **known spodumene mineralisation at Halo-Yuri** and target new LCT pegmatites



## Fully Funded for Exploration Activities

Strong support from new and existing Shareholders in recent Capital Raise

# Corporate Overview and Capital Structure

**1,487M**

Shares on issue

**29M**

Options on issue

**\$0.007**

Share price  
(16 Jan 2024)

**\$10.4M**

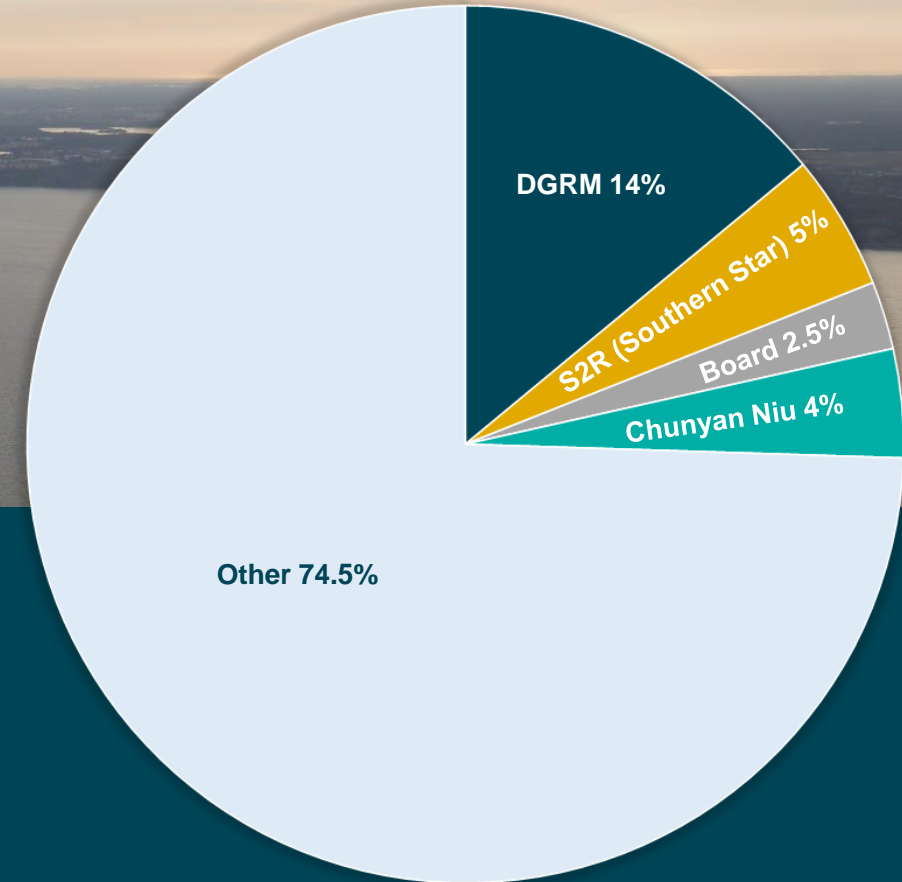
Market Capitalisation

**\$3.3M**

Treasury  
(31 Dec 2023)

**\$7.1M**

Enterprise Value



# Experienced Board of Directors



**Edward Fry**

Non-Executive Chairman

Eddie Fry is a Dagoman-Wardaman man from the Katherine region in the Northern Territory. He has extensive experience within the Australian resource sector and is a specialist in Indigenous and native title issues. He holds a Diploma in Business Management from the University of South Australia. He is the Chair of Indigenous Business Australia, is an executive director of Gimbulki Ltd, a native title land access company he established in 2002, Chair of the Indigenous Advisory Board at Broadspectrum (since 2010), Deputy Chair of the Aboriginal Foundation of South Australia Inc. and Chair of Trinex Minerals Limited.



**Will Dix**

Managing Director

Will is a geologist with 25 years' experience in base metal, gold and uranium exploration and mining. Will is a Fellow of the AusIMM, a graduate of the Australian Institute of Company Directors and has a proven track record of successful project and team management. He also has extensive experience in commercial activities including capital raisings, mergers, acquisitions and divestments and is a Non-Executive Director of Stelar Metals (ASX:SLB)



**Stuart Crow**

Non-Executive Director

Stu has more than 35 years' experience in all aspects of corporate finance, stockbroking and investor relations in Australia and international markets and has owned and operated his own businesses in these areas. Stu is currently Non-Executive Chairman of Lake Resources (ASX:LKE)



**Su-Mei Sain**

Executive Director

Su-Mei has a career spanning more than 15 years within the mining resources sector, where she has held diverse financial roles at mining companies including Sirius Resources and S2 Resources.

Su-Mei holds memberships in both Certified Practising Accountants Australia and the Australian Institute of Company Directors (AICD).

## Canadian Projects



## Australian Projects



# Northwest Territories An Emerging Lithium Province

## Northwest Territories, Canada

- Known spodumene rich pegmatites close to Yellowknife
- Supportive and accessible local government and clear land access regime

### Li-FT Power\* [TSXV: LIFT] – Mkt cap: C\$246M

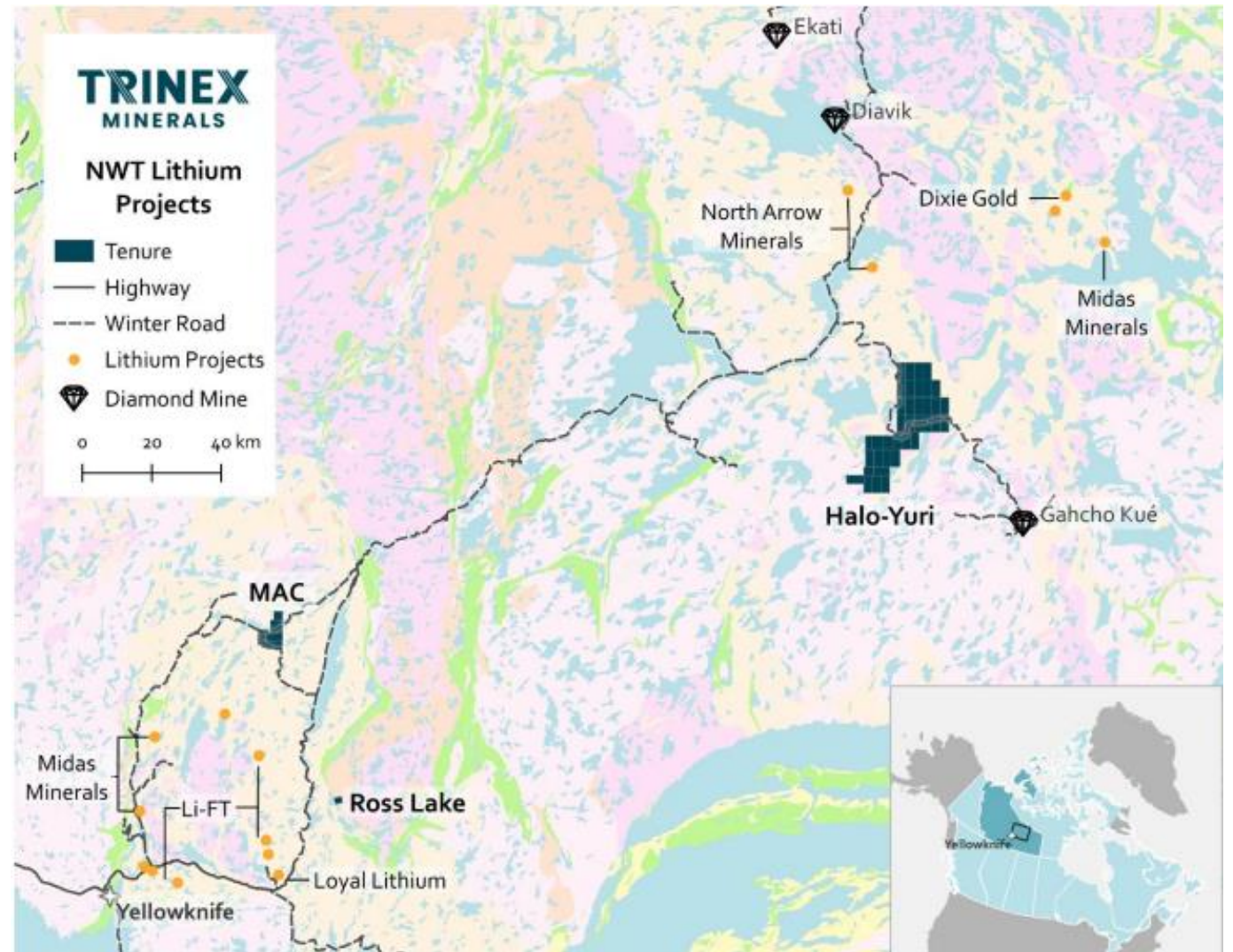
- Yellowknife & Cali Lithium projects with thick high grade Li intersections in drilling
- Drill hits include 60m @ 1.38% Li<sub>2</sub>O and 56m @ 1.42 Li<sub>2</sub>O (LIFT TSXV: 12 Aug 23)

### Loyal Lithium\* [ASX: LLI] – Mkt cap: A\$28M

- Hidden Lake Lithium Project acquired April 2023
- 14 Lithium bearing pegmatites present across project –only 4 drilled
- Pegmatite mineralisation identified of 3,250m (LLI ASX: 19 Oct 23)

### Midas Minerals\* [ASX: MM1] – Mkt cap: A\$10.8M

- Exploration underway at Yellowknife and Reid Aylmer Li Projects.
- 10 spodumene-bearing pegmatites identified to date at Yellowknife, with prospective areas covering > 70km<sup>2</sup> (MM1 ASX: 20 Nov 23)
- Reid-Aylmer “Argus” pegmatite (30m x 450m) returned rock chips up to 7.25% (MM1 ASX 12 Dec 23)



# Summer 2023 Exploration Program Completed

## Fieldwork Led by DGC



### Completed

Helicopter based field work to establish drilling priorities at Ross Lake and MAC



### Sampling and Mapping

Focusing on areas of known pegmatites where spodumene has previously been documented in government mapping



### Permit Applications

Archaeological Assessment (AOA) end January to allow Land Access Permit Applications to be lodged ASAP for 2024 drilling



### First Nations Consultation

Specialist Land Access professional engaged to facilitate the First Nation Consultation Process – meetings scheduled for late January





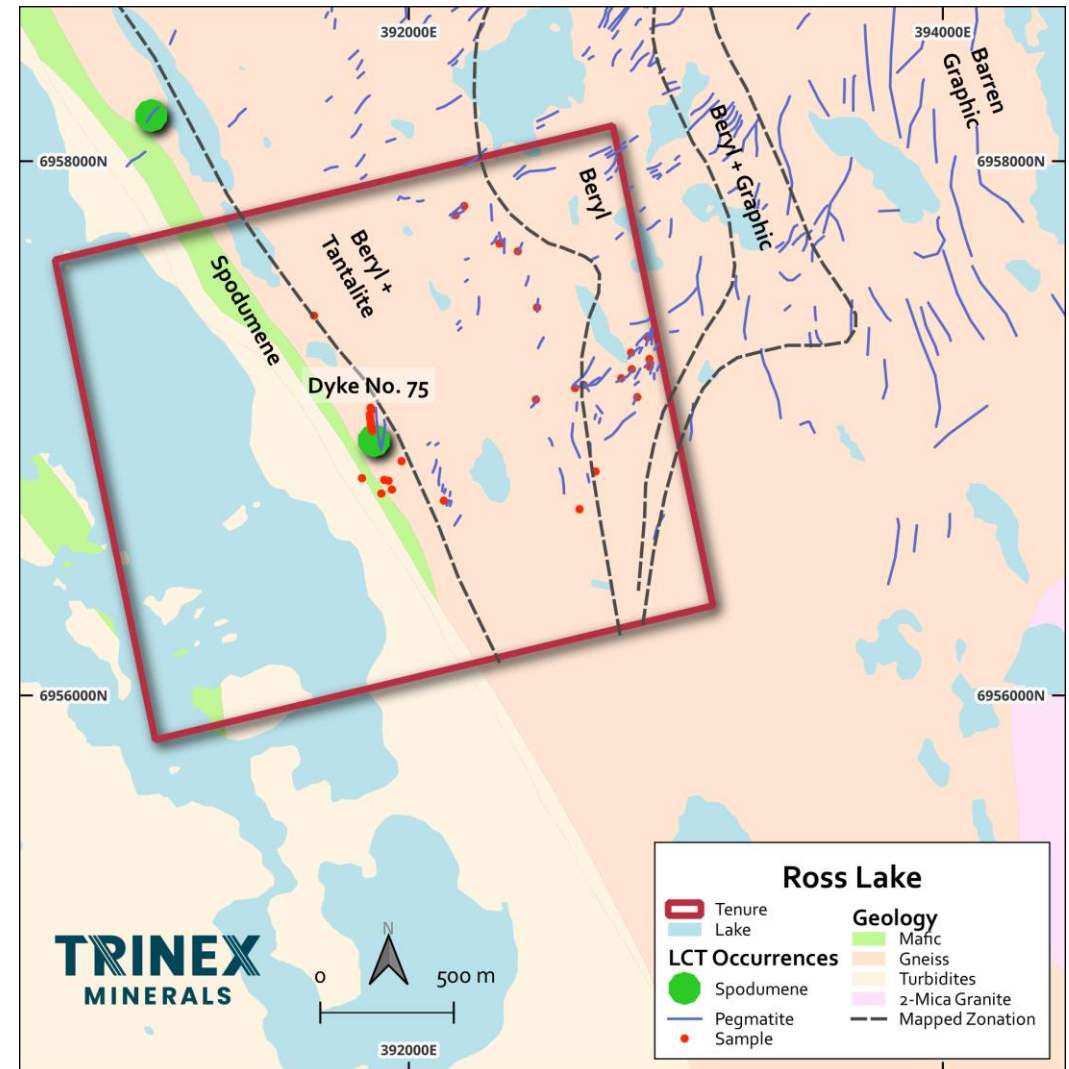
# Ross Lake Lithium Project

## Geology and Mineralisation

- Significant LCT pegmatite zonation
- SW corner most prospective – right geology
- Spodumene bearing pegmatites on the gneiss/sediment contact
- Unexplored to the west in volcanics and mafics

## 2023 Summer Exploration Program

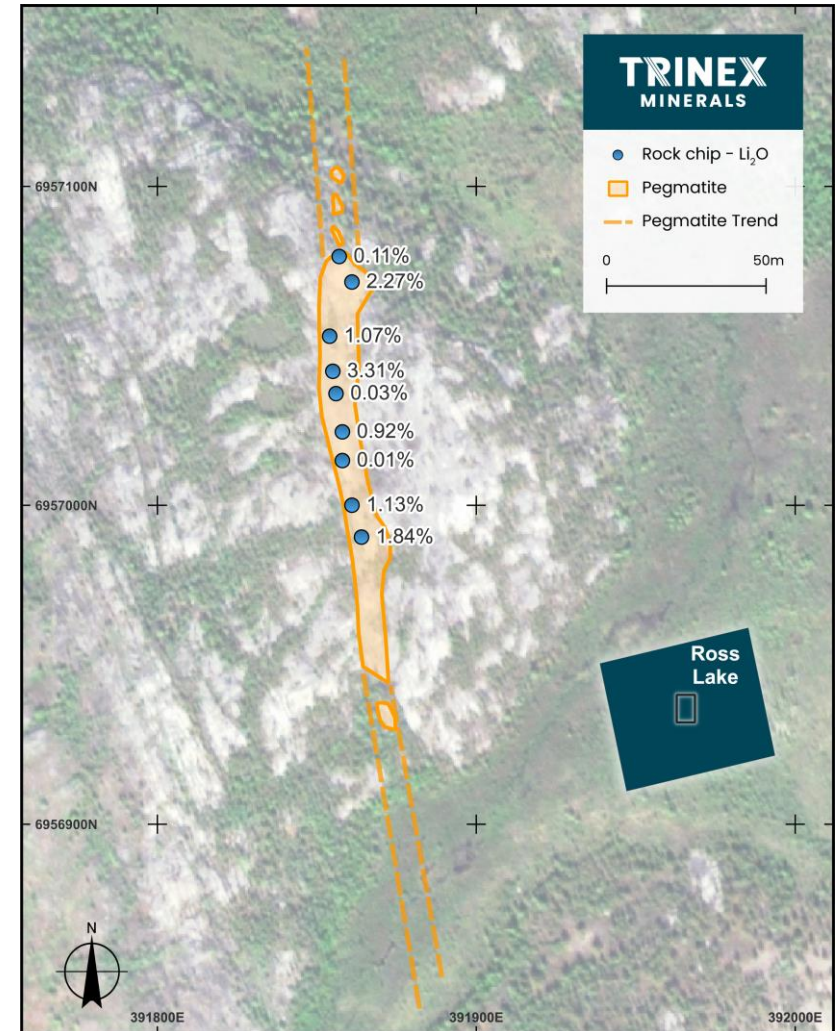
- ✓ Air photo analysis for preliminary pegmatite identification
- ✓ Sampling and detailed mapping of pegmatite swarms
- ✓ Presence of spodumene in outcropping dykes gives potential for significant lithium mineralisation



# Ross Lake High Grade Lithium Confirmed

## High Grade $\text{Li}_2\text{O}$ at Dyke 75

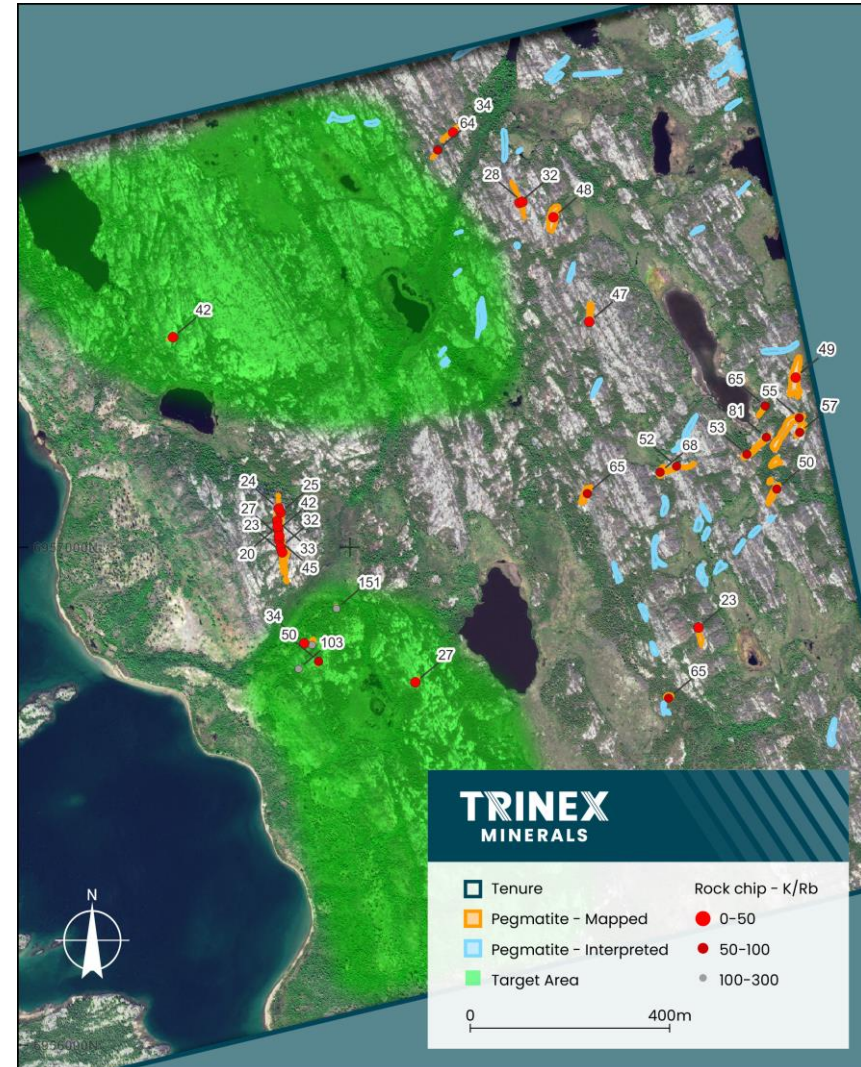
- Sampling returned results up to 3.31%  $\text{Li}_2\text{O}$
- Rock Chip Assays:
  - D00179806 **3.31%**  $\text{Li}_2\text{O}$
  - D00179861 **2.27%**  $\text{Li}_2\text{O}$
  - D00179903 **1.84%**  $\text{Li}_2\text{O}$
  - D00179902 1.13%  $\text{Li}_2\text{O}$
  - D00179805 1.07%  $\text{Li}_2\text{O}$
  - D00179808 0.92%  $\text{Li}_2\text{O}$
- The dyke is interpreted to continue north and south under cover.



# Ross Lake Priority for 2024 Drilling

## Summer 2024 Exploration Targets

- Away from Dyke 75, elevated indicator minerals and low K/Rb ratio suggest pegmatite system is fertile
- Further exploration and sampling is required in the summer 2024 field season
- Ross Lake is a high priority drilling target for 2024

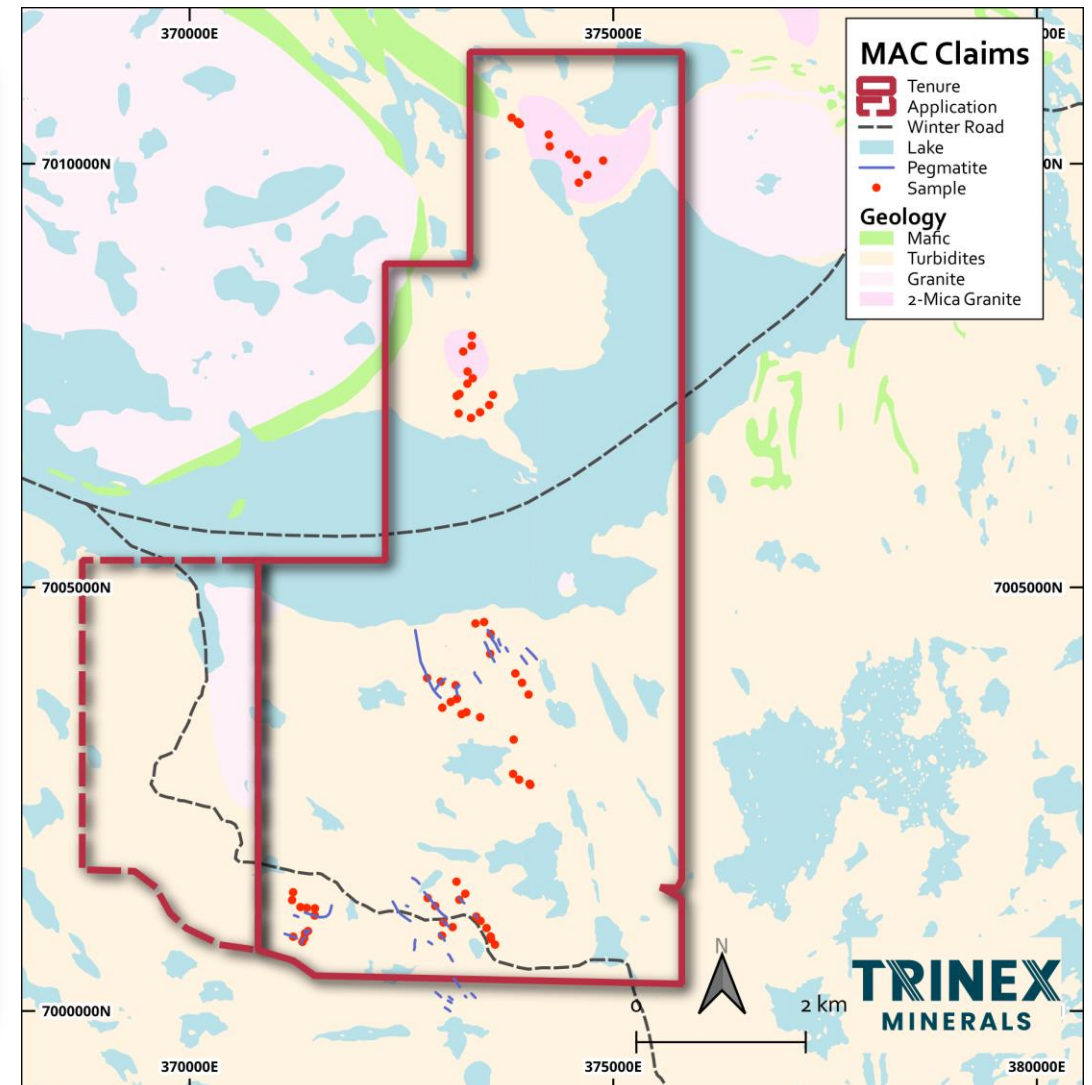


## Geology and Mineralisation

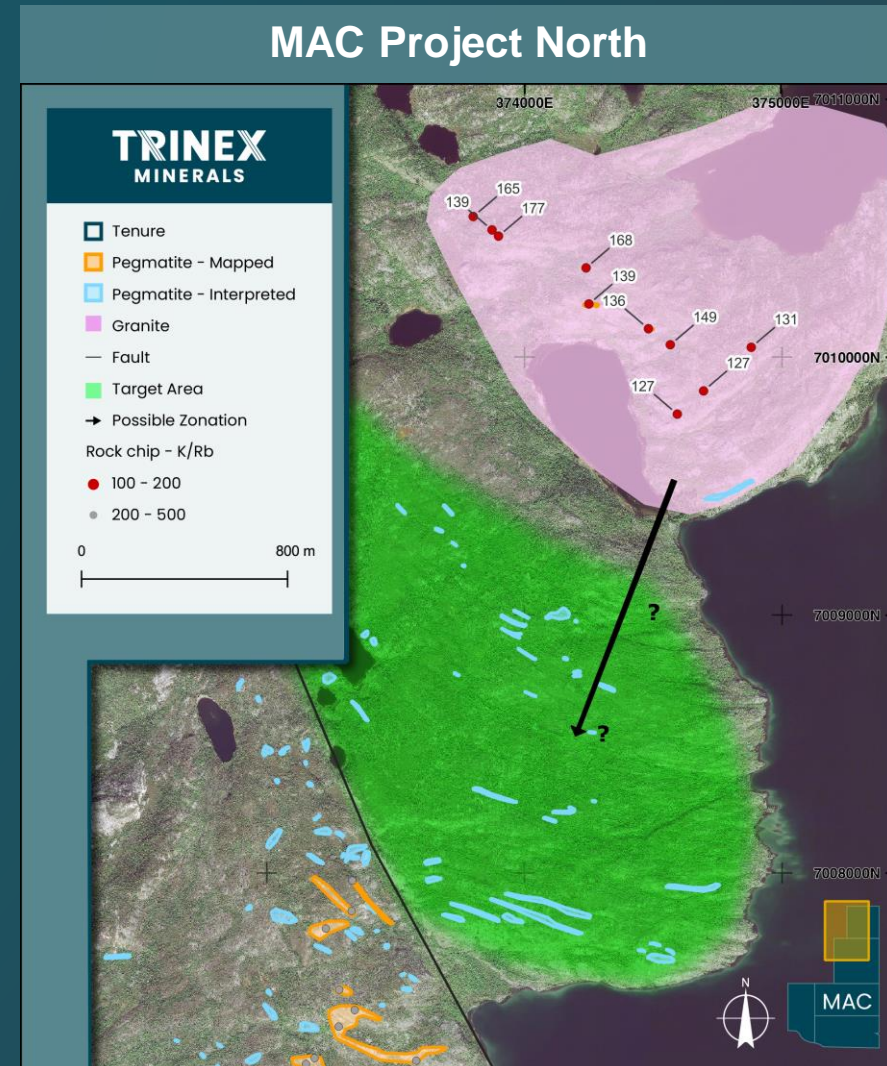
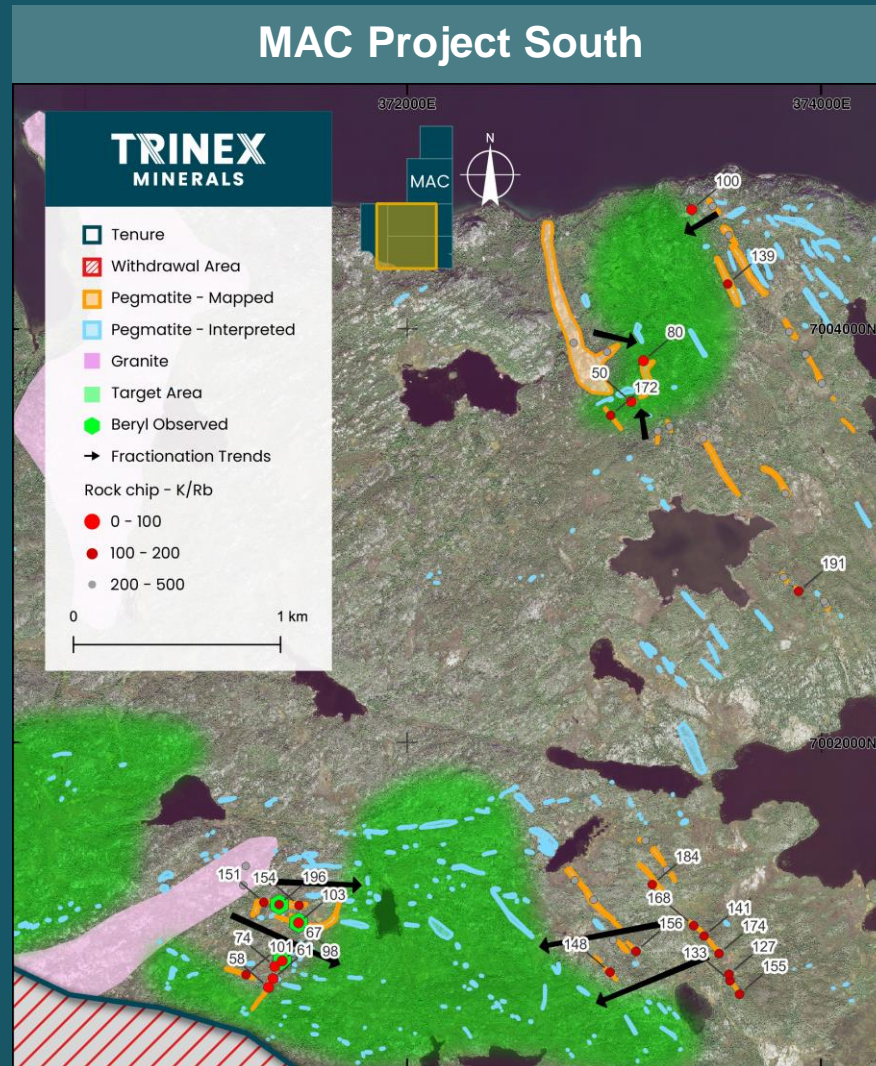
- Multiple pegmatite swarms identified in air photo interpretation and from NWTGS mapping
- Li bearing pegmatites immediately southwest of the claim boundary
- No prospecting or mapping done over the area north of the lake
- No modern exploration or drilling

## 2023 Summer Exploration Program

- ✓ Air photo analysis for preliminary pegmatite identification
- ✓ Sampling confirms large LCT pegmatite in south of the project
- ✓ Decreasing K/Rb ratio indicates fertile LCT pegmatites at MAC
- ✓ Additional tenure staked to the west, granted 18 Dec 23



# MAC Priority Target Areas for Summer 2024

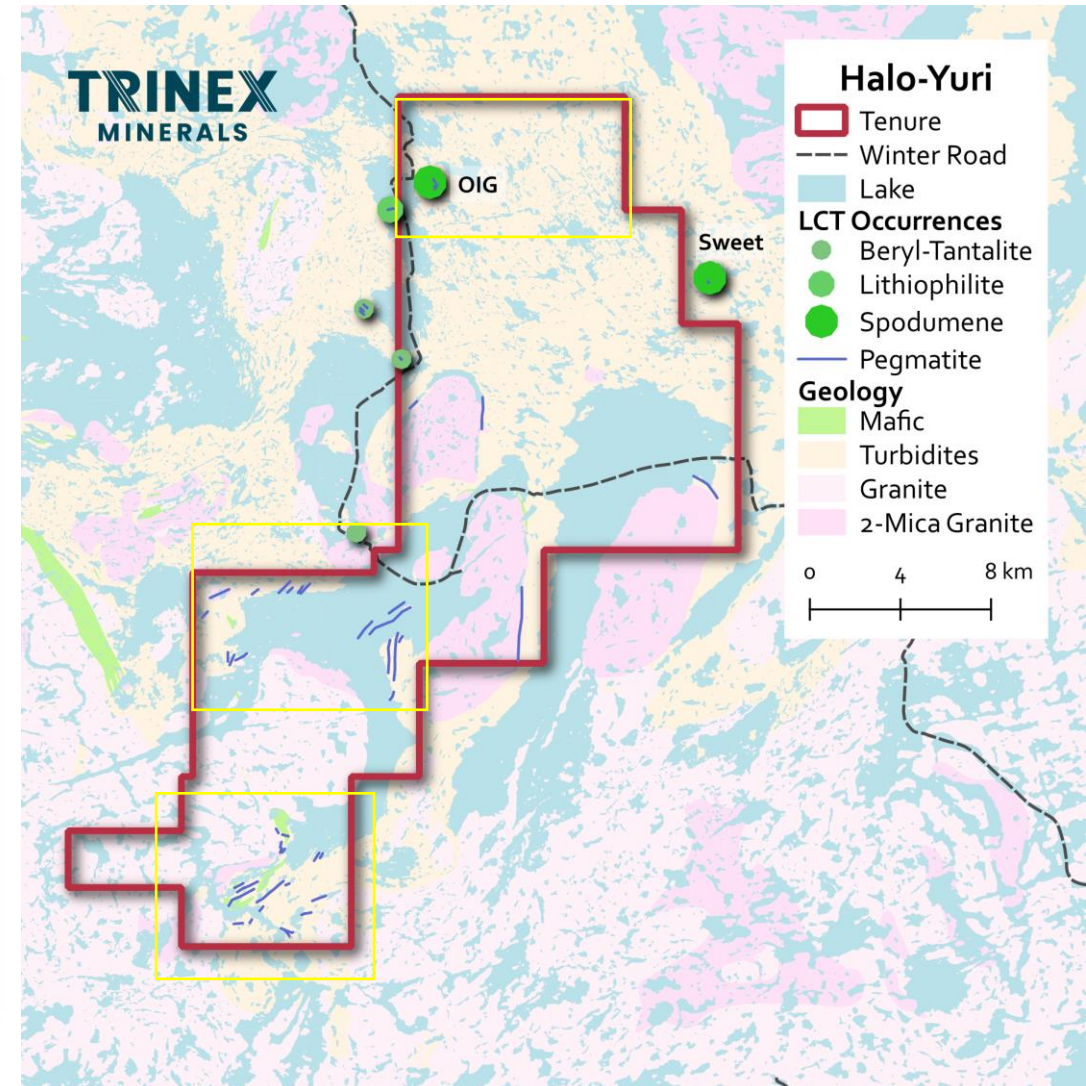


## Geology and Mineralisation

- Multiple pegmatite swarms identified from previous mapping
- Spodumene bearing pegmatites mapped in the northern part of the project
- No previous Li focused exploration
- Opportunity to access easily for drilling during winter via well-established winter road

## 2024 Summer Exploration Program

- Winter 2023/2024 - Air photo analysis and preliminary pegmatite identification
- Summer 2024 field campaign to map and sample pegmatites
- Main area of focus will be within the turbidites
- Results expected to lead to an initial drilling program for late summer 2024
- Land Access permitting underway with initial AOA being completed



# Exploring for a Sustainable Future

	Q1 24	Q2 24	Q3 24	Q4 24
<b>NWT Lithium Projects</b>				
First Nations Engagement				
Archaeological Overview Assessment				
Land Use Applications				
Desktop exploration work				
Diamond Drilling				
Drill results				

# Critical Minerals Investment Opportunity



## Key Assets

TX3 owns 100% of projects in an emerging lithium province



## Focused Exploration

Underpinned by numerous known spodumene bearing pegmatites



## Initial Fieldwork Confirms Spodumene

Systematic surface sampling at Ross Lake and MAC



## Strong Register

Top 20 owns approximately 68%



## Treasury of A\$3.3m

Funded for 2024






# TRINEX

MINERALS

**Will Dix**  
Managing Director

 +61 8 6166 0255

 [wdix@trinexminerals.com.au](mailto:wdix@trinexminerals.com.au)

 [trinexminerals.com.au](http://trinexminerals.com.au)

**TX3**