

Further Assays Confirm High-Grade Gold at Rock of Ages

Key Points

- Assay results now received for 1 metre RC samples from the Rock of Ages Project
- Significant intersections include:
 - RARC005: 5m at 3.12g/t Au** from 91m inc. **1m at 10.85g/t Au** from 91m
 - RARC006: 3m at 2.66g/t Au** from 85m inc. **1m at 6.82g/t Au** from 86m and **1m at 1.88g/t Au** from 59m
 - RARC003: 2m at 1.69g/t Au** from 112m inc. **1m at 2.92g/t Au** from 112m
 - RARC002: 5m at 0.45g/t Au** from 55m
- Results show up to **5 stacked gold lodes** that appear to correlate between drill holes
- Generally better results seen in fresh rock versus heavily weathered upper saprolite
- Mineralisation open at depth and along strike - **to be tested by a follow up program**

Western Mines Group Ltd (WMG or Company) (**ASX:WMG**) is pleased to update shareholders on further assay results received for the maiden drilling program at the Rock of Ages Project.

Summary

Assay results have now been received for the 1 metre sample intervals from the reverse circulation (RC) drilling program completed at the Company's Rock of Ages Project (*ASX, Completion of Rock of Ages RC Drilling, 9 September 2021*). A total of 52 individual 1 metre samples were selected and submitted for follow up geochemical assay based on the previous composite sample results (*ASX, Maiden Drilling Intersects High-Grade Gold at Rock of Ages, 14 October 2021*).

These assay results **confirm the high-grade gold potential of the project, with up to 10.85g/t Au seen in hole RARC005**, whilst perhaps more encouragingly the results also show **evidence for up to 5 stacked gold lodes** that appear to correlate well between drill holes. Generally better assay results were seen in fresher, less weathered rock versus the highly weathered upper saprolite. The combination of these three factors (grade, multiple lodes, better results in fresh rock) lends strong support for further drill testing, where broader high-grade zones may hopefully be encountered at depth.

This initial program completed 5 holes to a maximum depth of 150m, for a total of 654m, to test the main central strike of the trend of the Rock of Ages historical gold workings. Gold mineralisation was seen in every drill hole, with standout results in these recent sample assays of **RARC005 5m at 3.12g/t Au** from 91m, including **1m at 10.85g/t Au** from 91m and **RARC006 3m at 2.66g/t Au** from 85m, including **1m at 6.82g/t Au** from 86m, and **1m at 1.88g/t Au** from 58m. Mineralisation remains open at depth and along strike to the north and south.

Commenting on the Rock of Ages Project, WMG Managing Director Caedmon Marriott said:

"The 1m assays provide a further level of detail for the project and increase confidence that a follow up drilling program is certainly warranted, that we intend to complete early in 2022."

Project Overview

The Rock of Ages Project comprises prospecting licence P38/4203 and is located approximately 32km southeast of Laverton. The project lies on the Laverton Greenstone Belt, around 4.5km south of the historical Burtville Mining Centre and is surrounded by Focus Minerals (ASX:FML) Laverton Gold Project, with the neighbouring deposits of Burtville (206,000oz at 0.96g/t Au) and Karridale (1.19Moz at 1.33g/t Au) within a 5km radius. The tenement contains the Rock of Ages workings where historical records indicate 2,074oz Au was mined between 1902 and 1911 at an average grade of 50g/t Au.

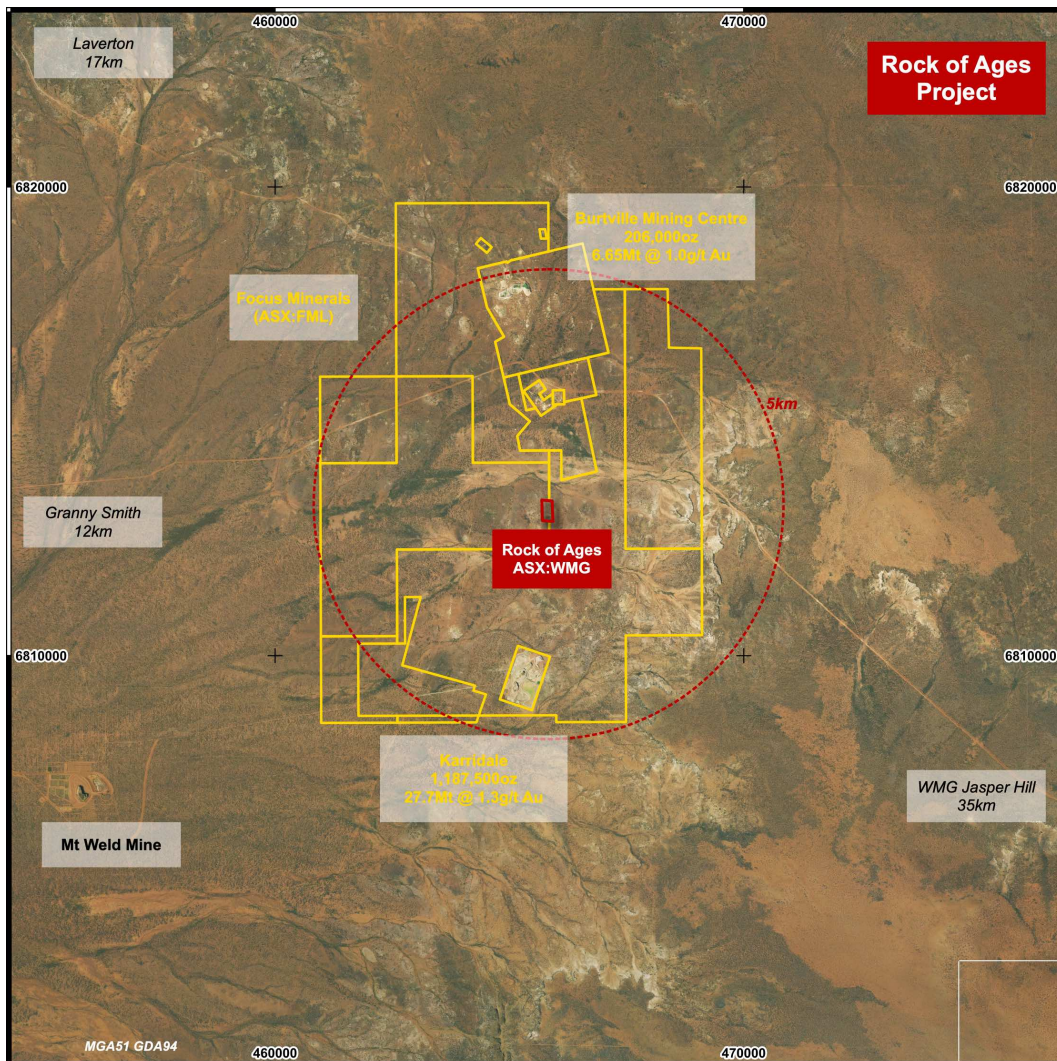


Figure 1: Location of Rock of Ages Project

WMG RC Drilling Program

WMG completed an initial 5 hole RC drilling program totalling 654m designed to test beneath the main central cluster of shafts and workings and area of extensive mullock dumps (ASX, *Completion of Rock of Ages RC Drilling, 9 September 2021*). The holes ranged in depth from 120m to 150m depth targeting an inferred sub-vertical mineralised horizon dipping towards the west. The holes were drilled across 4 lines along the strike of the trend of shafts and workings.

The drilling predominantly intersected sheared felsic volcanics, which were often heavily weathered down to approximately 80-90m. Initially 288 composite samples were collected for geochemical assay, with 4 metre samples taken from 0m to 40m down each hole and 2 metre composites taken from 40m to end of each hole. Based on the previous composite sample results (ASX, *Maiden Drilling Intersects High-Grade Gold at Rock of Ages*, 14 October 2021) a further 52 individual 1 metre samples were selected and submitted for follow up geochemical assay. All samples were processed by the ALS laboratory in Perth for gold analysis by fire assay and significant intersections are shown in the table below.

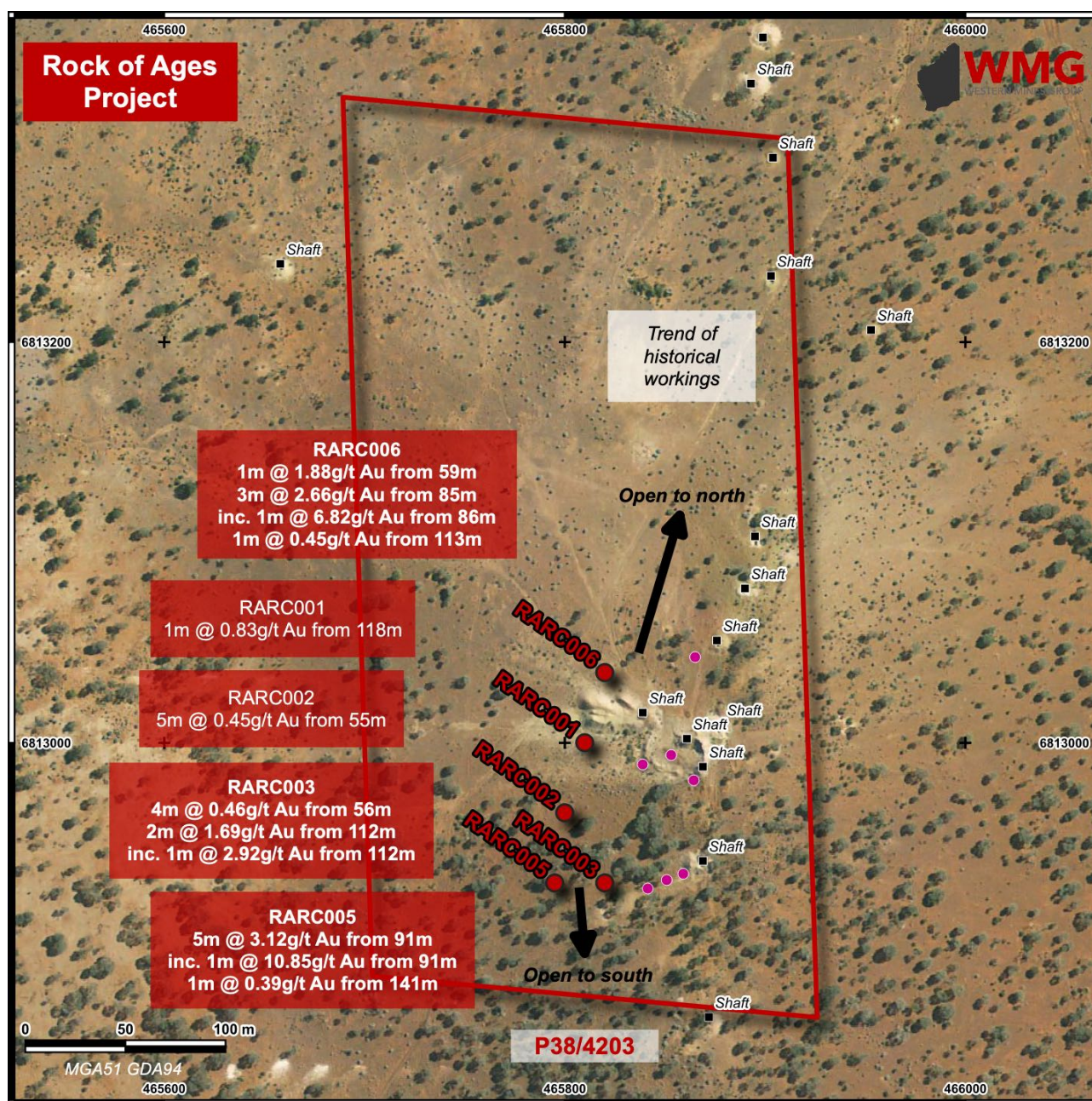


Figure 2: Rock of Ages Drill Hole Plan

HoleID	Easting (MGA51)	Northing (MGA51)	Max Depth (m)	Azimuth	Dip	From (m)	To (m)	Interval (m)	Grade Au (g/t)
RARC001	465810	6813000	126	90	-60	45 118	48 119	3 1	0.18 0.83
RARC002	465800	6812965	138	90	-60	55 67 87	60 68 88	5 1 1	0.45 0.42 0.13
RARC003	465820	6812930	120	90	-60	56 112 inc. 112	60 114 113	4 2 1	0.41 1.69 2.92
RARC005	465795	6812930	150	90	-60	91 inc 91 141	96 92 142	5 1 1	3.12 10.85 0.39
RARC006	465820	6183035	120	90	-60	47 59 64 85 inc 86 113	52 60 65 88 87 114	5 1 1 3 1 1	0.19 1.88 0.14 2.66 6.82 0.45

Table 1: Significant Intersections for WMG RC 1m Samples at Rock of Ages

(significant intersections at 0.1g/t Au cut off, with maximum 1m internal dilution)

Further Work

WMG is encouraged by the extra level of detail provided by the 1 metre sample results, which confirm the high-grade gold potential of the project, with up to 10.85g/t Au seen in hole RARC005; whilst perhaps more encouragingly these results also show evidence for up to 5 stacked gold lodes that appear to correlate well between drill holes (Figures 4 and 5).

The Company recently completed a high-resolution ground magnetic survey at the project during November. The survey was completed at 20m line spacing, with east-west lines orientated across the strike of the trend of historical shafts and workings, an image of the survey results is shown in Figure 3 below.

It is interesting to note that the chain of historical workings occur along the eastern contact of a higher magnetic response unit or anomaly and that the holes collared within this unit generally showed higher grade gold results (holes RARC003, RARC005 and RARC006). This higher magnetic response unit extends to the north of hole RARC006 and will be tested by follow up drilling.

A Program of Work (POW) is already in place for a follow up drill program and the Company is in the process of investigating rig availability in order to complete further drilling early in 2022.

The Company looks forward to updating shareholders on the ongoing exploration at Rock of Ages in due course.

For further information please contact: Dr Caedmon Marriott
 Managing Director
 Tel: +61 475 116 798
 Email: contact@westernmines.com.au

This announcement has been authorised for release to the ASX by the Board of Western Mines Group Ltd

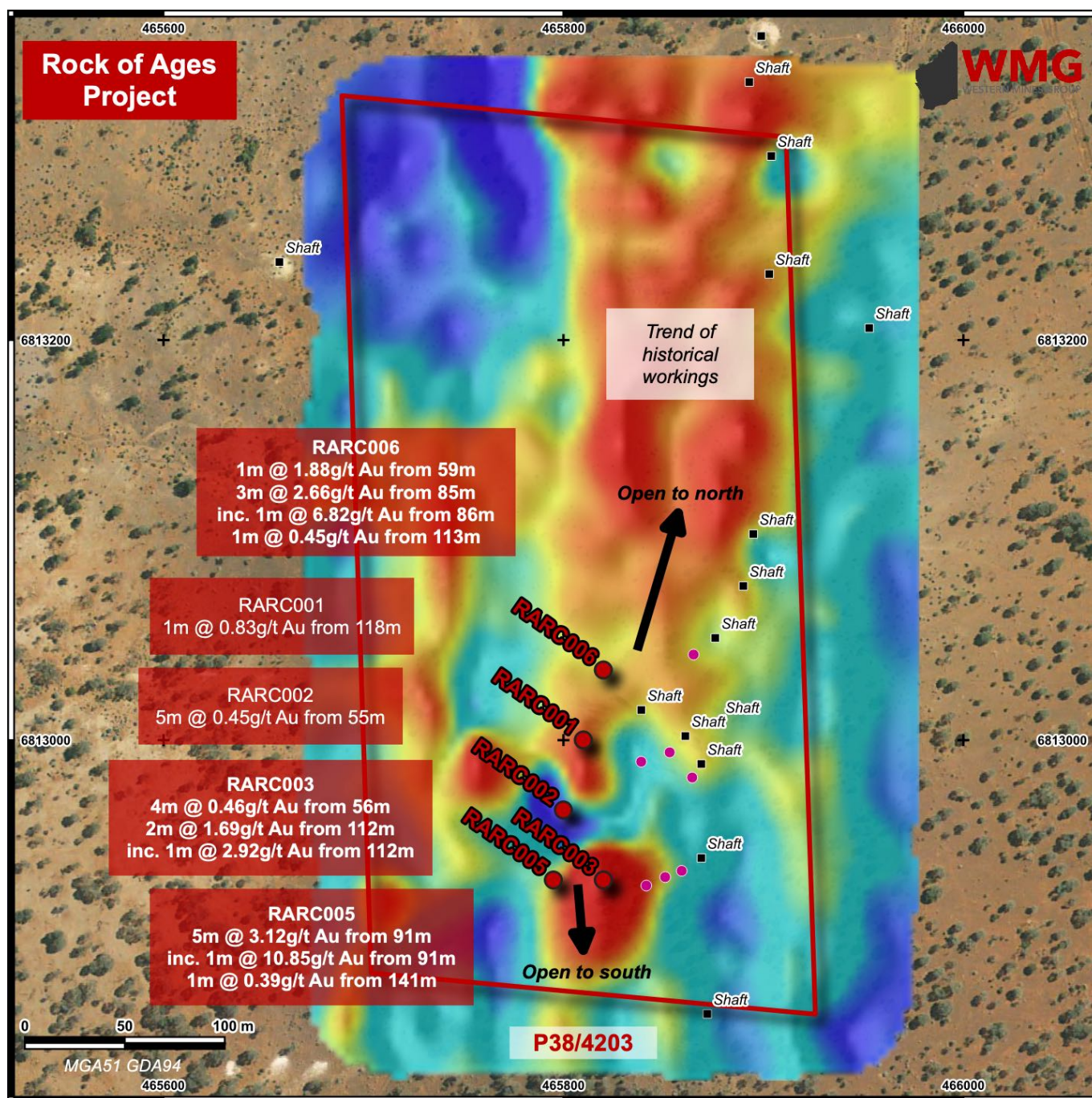


Figure 3: Rock of Ages Ground Magnetism RTP Image

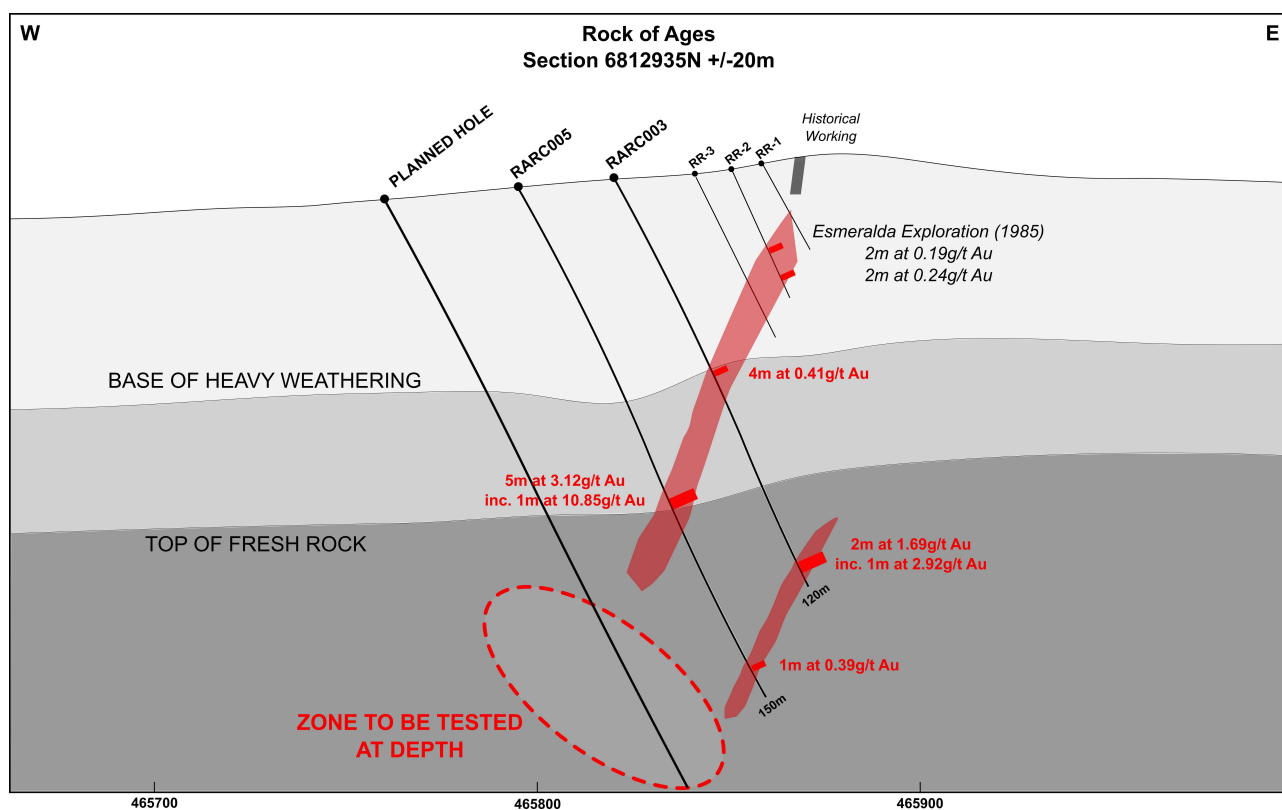


Figure 4: Rock of Ages Cross-Section 6812935N

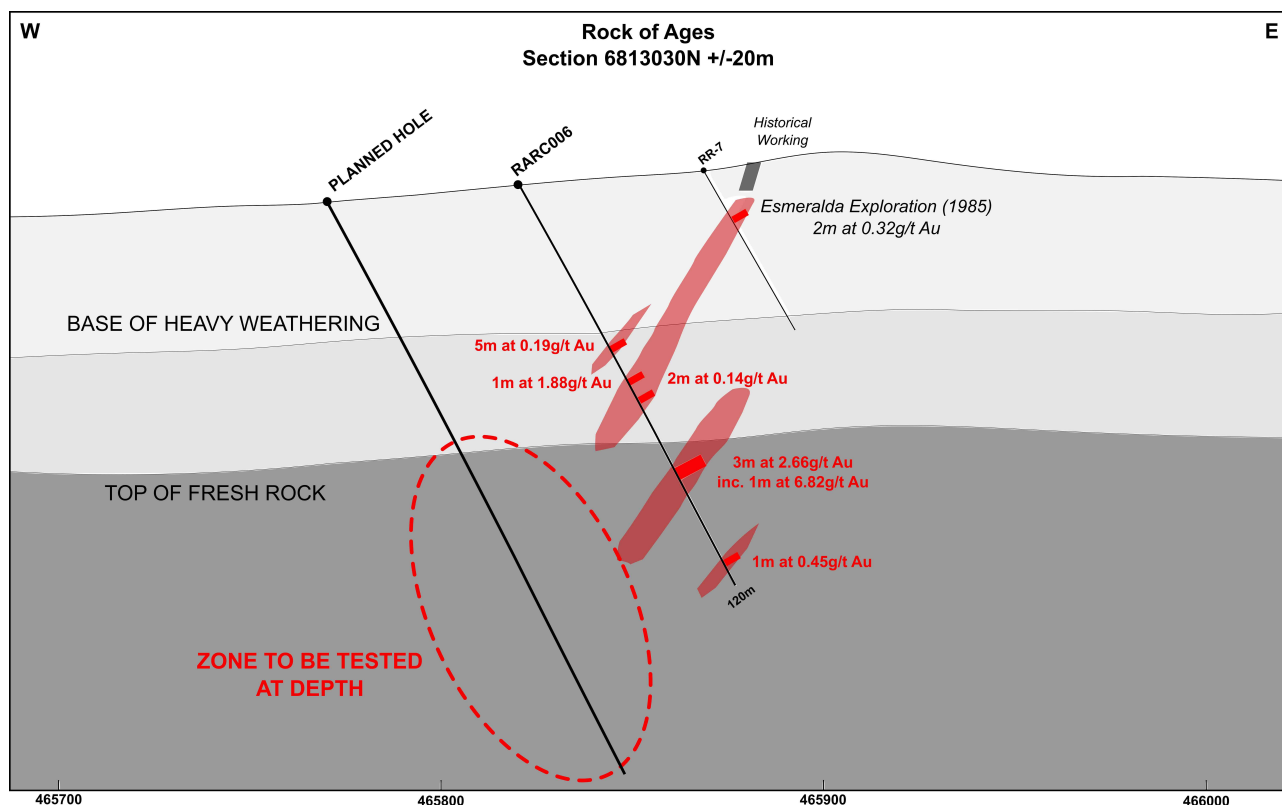


Figure 5: Rock of Ages Cross-Section 6813030N

Western Mines Group Ltd

ACN 640 738 834
Level 3, 33 Ord Street
West Perth
WA 6005

Board**Rex Turkington**

Non-Executive Chairman

Dr Caedmon Marriott

Managing Director

Francesco Cannavo

Non-Executive Director



Paul Burton

Non-Executive Director

Capital Structure

Shares: 44.65m
Options: 19.6m
Share Price: \$0.165
Market Cap: \$7.14m
Cash (30/09/21): \$5.03m

Follow us

 @westernmines
 westernmines
 Western Mines Group

About WMG

Western Mines Group Ltd (ASX:WMG) is a mineral exploration company driven by the goal to create significant investment returns for our shareholders through exploration and discovery of high-value gold and nickel sulphide deposits across a portfolio of highly-prospective projects located on major mineral belts of Western Australia.

Our flagship project and current primary focus is the Mulga Tank Ni-Cu-PGE Project, a major dunite intrusive found on the under-explored Minigwal Greenstone Belt. Previous work shows significant evidence for a working sulphide mineral system and is considered highly prospective for Ni-Cu-PGE mineralisation.

WMG holds numerous other projects across major WA mineral belts including Melita (Au), midway between Kookynie and Leonora in the heart of the WA Goldfields and Jasper Hill (Au), with numerous prospective gold trends extending from the adjacent Lord Byron and Fish historical gold mines. The Company is also actively exploring Youanmi (Au), Pavarotti (Ni-Cu-PGE), Rock of Ages (Au), Broken Hill Bore (Au) and Pinyalling (Au).

Competent Persons Statement

The information in this announcement that relates to Exploration Results and other technical information complies with the 2012 Edition of the Australasian Code for Reporting of Exploration Results, Mineral Resources and Ore Reserves (JORC Code) and has been compiled and assessed under the supervision of Dr Caedmon Marriott, Managing Director of Western Mines Group Ltd. Caedmon is a Member of the Australian Institute of Geoscientists and a Member of the Australasian Institute of Mining and Metallurgy. He has sufficient experience that is relevant to the style of mineralisation and type of deposit under consideration and to the activity being undertaken to qualify as a Competent Person as defined in the 2012 Edition of the JORC Code. Caedmon consents to the inclusion in this announcement of the matters based on his information in the form and context in which it appears.

Disclaimer

Some of the statements appearing in this announcement may be in the nature of forward looking statements. You should be aware that such statements are only predictions and are subject to inherent risks and uncertainties. Those risks and uncertainties include factors and risks specific to the industries in which WMG operates and proposes to operate as well as general economic conditions, prevailing exchange rates and interest rates and conditions in the financial markets, among other things. Actual events or results may differ materially from the events or results expressed or implied in any forward looking statement. No forward looking statement is a guarantee or representation as to future performance or any other future matters, which will be influenced by a number of factors and subject to various uncertainties and contingencies, many of which will be outside WMG's control.

WMG does not undertake any obligation to update publicly or release any revisions to these forward looking statements to reflect events or circumstances after today's date or to reflect the occurrence of unanticipated events. No representation or warranty, express or implied, is made as to the fairness, accuracy, completeness or correctness of the information, opinions or conclusions contained in this announcement. To the maximum extent permitted by law, none of WMG, its Directors, employees, advisors or agents, nor any other person, accepts any liability for any loss arising from the use of the information contained in this announcement. You are cautioned not to place undue reliance on any forward looking statement. The forward looking statements in this announcement reflect views held only as at the date of this announcement.

Rock of Ages

JORC Code, 2012 Edition - Table 1

Section 1: Sampling Techniques and Data

Criteria	JORC Code explanation	Commentary
Sampling techniques	<ul style="list-style-type: none"> Nature and quality of sampling (eg cut channels, random chips, or specific specialised industry standard measurement tools appropriate to the minerals under investigation, such as down hole gamma sondes, or handheld XRF instruments, etc). These examples should not be taken as limiting the broad meaning of sampling. Include reference to measures taken to ensure sample representivity and the appropriate calibration of any measurement tools or systems used. Aspects of the determination of mineralisation that are Material to the Public Report. In cases where 'industry standard' work has been done this would be relatively simple (eg 'reverse circulation drilling was used to obtain 1 m samples from which 3 kg was pulverised to produce a 30 g charge for fire assay'). In other cases more explanation may be required, such as where there is coarse gold that has inherent sampling problems. Unusual commodities or mineralisation types (eg submarine nodules) may warrant disclosure of detailed information. 	<ul style="list-style-type: none"> Reverse circulation drilling was used to obtain individual 1 metre samples downhole Each 1 metre sample was grab sampled and either composited over a 4 metre interval (from 0m to 40m depth) or 2 metre interval (from 40m depth to end of hole) or collected individually to obtain approximately a 2kg to 3kg sample for analysis Samples were be pulverised to obtain a homogenised sample from which a 50g sample was analysed by fire assay Au-AA24 A QA/QC system comprising standards, blanks and duplicate sample analysis is used to evaluate the assay process Ground magnetic survey undertaken using industry standard processes and equipment
Drilling techniques	<ul style="list-style-type: none"> Drill type (eg core, reverse circulation, open-hole hammer, rotary air blast, auger, Bangka, sonic, etc) and details (eg core diameter, triple or standard tube, depth of diamond tails, face-sampling bit or other type, whether core is oriented and if so, by what method, etc). 	<ul style="list-style-type: none"> Reverse circulation percussion using a Hydco RC70 drill rig with a 5.25inch face sampling bit
Drill sample recovery	<ul style="list-style-type: none"> Method of recording and assessing core and chip sample recoveries and results assessed. Measures taken to maximise sample recovery and ensure representative nature of the samples. Whether a relationship exists between sample recovery and grade and whether sample bias may have occurred due to preferential loss/gain of fine/coarse material. 	<ul style="list-style-type: none"> Sample recoveries assessed quantitatively with each 1 metre sample weighed to assess recovery Standard drilling techniques used to maximise sample recovery Information not available to assess relationship between sample recovery and grade
Logging	<ul style="list-style-type: none"> Whether core and chip samples have been geologically and geotechnically logged to a level of detail to support appropriate Mineral Resource estimation, mining studies and metallurgical studies. Whether logging is qualitative or quantitative in nature. Core (or costean, channel, etc) photography. The total length and percentage of the relevant intersections logged. 	<ul style="list-style-type: none"> Drill holes geologically logged on a metre basis Logging is to a level of detail sufficient to support Mineral Resource estimation or other technical studies but further detailed information would be required Logging is qualitative in nature 100% of all drill holes and relevant intersections logged

Criteria	JORC Code explanation	Commentary
Sub-sampling techniques and sample preparation	<ul style="list-style-type: none"> • If core, whether cut or sawn and whether quarter, half or all core taken. • If non-core, whether riffled, tube sampled, rotary split, etc and whether sampled wet or dry. • For all sample types, the nature, quality and appropriateness of the sample preparation technique. • Quality control procedures adopted for all sub-sampling stages to maximise representivity of samples. • Measures taken to ensure that the sampling is representative of the in-situ material collected, including for instance results for field duplicate/second-half sampling. • Whether sample sizes are appropriate to the grain size of the material being sampled. 	<ul style="list-style-type: none"> • Majority of samples were dry however minor ground water was encountered and some samples were taken wet • Systematic grab sampling of approximately 0.5kg to 1kg from each 1 metre drill sample to obtain either a 4 metre or 2 metre composite, or individual 1 metre, sample of around 2kg to 3kg • Industry standard sample preparation techniques were undertaken and considered appropriate for the sample type and material sampled • The sample size is considered appropriate to the grain size of the material being sampled
Quality of assay data and laboratory tests	<ul style="list-style-type: none"> • The nature, quality and appropriateness of the assaying and laboratory procedures used and whether the technique is considered partial or total. • For geophysical tools, spectrometers, handheld XRF instruments, etc, the parameters used in determining the analysis including instrument make and model, reading times, calibrations factors applied and their derivation, etc. • Nature of quality control procedures adopted (eg standards, blanks, duplicates, external laboratory checks) and whether acceptable levels of accuracy (i.e. lack of bias) and precision have been established. 	<ul style="list-style-type: none"> • Nature and quality of the assay and laboratory procedures are considered appropriate for the drill chip samples • Samples analysed by ALS in Perth for gold by fire assay using method code Au-AA24, considered to be a total technique • Standards, blanks and duplicate samples introduced throughout the sample collection on a 1:25 ratio to ensure quality control • ALS also undertake duplicate sampling and run internal standards as part of their assay regime • Ground magnetic survey undertaken by Nomad Exploration Pty Ltd using a GEM Systems GSM-19WV Overhauser walking magnetometer and a GEM Systems GSM-19T Proton magnetometer as a base station to record and correct for diurnal variation. Walking magnetometer readings were collected at 1 second intervals whilst base station readings were taken at 20 second intervals
Verification of sampling and assaying	<ul style="list-style-type: none"> • The verification of significant intersections by either independent or alternative company personnel. • The use of twinned holes. • Documentation of primary data, data entry procedures, data verification, data storage (physical and electronic) protocols. • Discuss any adjustment to assay data. 	<ul style="list-style-type: none"> • Significant intersections of gold mineralisation have not been independently verified • No holes were twinned • Primary data was uploaded to the company's database • No adjustments to assay data
Location of data points	<ul style="list-style-type: none"> • Accuracy and quality of surveys used to locate drill holes (collar and down-hole surveys), trenches, mine workings and other locations used in Mineral Resource estimation. • Specification of the grid system used. • Quality and adequacy of topographic control. 	<ul style="list-style-type: none"> • Drill hole collars located using a handheld GPS with accuracy of +/-3m, downhole surveys undertaken for all holes using an accurate gyroscopic tool • Coordinates are in GDA94 Zone 51 • Topographic control is based on handheld GPS • Walking magnetometer used inbuilt GPS unit with accuracy of +/-0.6m
Data spacing and distribution	<ul style="list-style-type: none"> • Data spacing for reporting of Exploration Results. • Whether the data spacing and distribution is sufficient to establish the degree of geological and grade continuity appropriate for the Mineral Resource and Ore Reserve estimation procedure(s) and classifications applied. • Whether sample compositing has been applied. 	<ul style="list-style-type: none"> • Drill holes were completed on 35m spaced lines • Sample compositing has been applied with either 4 individual metre samples composited to obtain an assay sample for samples from 0m to 40m depth and 2 individual metre samples composited to obtain an assay sample for sampled from 40m depth to end of hole

Criteria	JORC Code explanation	Commentary
Orientation of data in relation to geological structure	<ul style="list-style-type: none"> Whether the orientation of sampling achieves unbiased sampling of possible structures and the extent to which this is known, considering the deposit type. If the relationship between the drilling orientation and the orientation of key mineralised structures is considered to have introduced a sampling bias, this should be assessed and reported if material. 	<ul style="list-style-type: none"> Orientation of sampling is downhole There is no quantitative information regarding the orientation of mineralised structures and the relationship between drilling orientation and the orientation of key mineralised structures is not known No sampling bias is considered to have been introduced but there is currently insufficient information to confirm this
Sample security	<ul style="list-style-type: none"> The measures taken to ensure sample security. 	<ul style="list-style-type: none"> Samples were bagged and secured in the field by Company staff Samples were transported directly to the analytical laboratory by a third party freight company
Audits or reviews	<ul style="list-style-type: none"> The results of any audits or reviews of sampling techniques and data. 	<ul style="list-style-type: none"> No sampling techniques or data have been independently audited

Section 2: Reporting of Exploration Results

Criteria	JORC Code explanation	Commentary
Mineral tenement and land tenure status	<ul style="list-style-type: none"> Type, reference name/number, location and ownership including agreements or material issues with third parties such as joint ventures, partnerships, overriding royalties, native title interests, historical sites, wilderness or national park and environmental settings. The security of the tenure held at the time of reporting along with any known impediments to obtaining a licence to operate in the area. 	<ul style="list-style-type: none"> Tenement P38/4203 Held 100% by Western Mines Group Ltd 1% NSR to original tenement holder Native Title Claim by Nyalpa Pirniku not yet determined No known historical or environmentally sensitive areas within the tenement area Tenement is in good standing
Exploration done by other parties	<ul style="list-style-type: none"> Acknowledgment and appraisal of exploration by other parties. 	<ul style="list-style-type: none"> Esmeralda Exploration undertook a 7 hole RC drilling program within the project area in 1985 (WAMEX A17850)
Geology	<ul style="list-style-type: none"> Deposit type, geological setting and style of mineralisation. 	<ul style="list-style-type: none"> Geology consists of quartz veins in a schistose felsic volcanic-tuffaceous sequence that includes ferruginous chert units
Drill hole information	<ul style="list-style-type: none"> A summary of all information material to the understanding of the exploration results including a tabulation of the following information for all Material drill holes: <ul style="list-style-type: none"> easting and northing of the drill hole collar elevation or RL (Reduced Level – elevation above sea level in metres) of the drill hole collar dip and azimuth of the hole down hole length and interception depth hole length. If the exclusion of this information is justified on the basis that the information is not Material and this exclusion does not detract from the understanding of the report, the Competent Person should clearly explain why this is the case. 	<ul style="list-style-type: none"> A listing of the drill hole information material to the understanding of the exploration results provided in the body of this announcement

Criteria	JORC Code explanation	Commentary
Data aggregation methods	<ul style="list-style-type: none"> <i>In reporting Exploration Results, weighting averaging techniques, maximum and/or minimum grade truncations (eg cutting of high grades) and cut-off grades are usually Material and should be stated.</i> <i>Where aggregate intercepts incorporate short lengths of high grade results and longer lengths of low grade results, the procedure used for such aggregation should be stated and some typical examples of such aggregations should be shown in detail.</i> <i>The assumptions used for any reporting of metal equivalent values should be clearly stated.</i> 	<ul style="list-style-type: none"> No metal equivalent values have been quoted
Relationship between mineralisation widths and intercept lengths	<ul style="list-style-type: none"> <i>These relationships are particularly important in the reporting of Exploration Results.</i> <i>If the geometry of the mineralisation with respect to the drill hole angle is known, its nature should be reported.</i> <i>If it is not known and only the down hole lengths are reported, there should be a clear statement to this effect (eg 'down hole length, true width not known').</i> 	<ul style="list-style-type: none"> Geometry of the mineralisation with respect to drill hole angle is not known Intersections reported as down hole lengths, true width not known
Diagrams	<ul style="list-style-type: none"> <i>Appropriate maps and sections (with scales) and tabulations of intercepts should be included for any significant discovery being reported. These should include, but not be limited to a plan view of drill hole collar locations and appropriate sectional views.</i> 	<ul style="list-style-type: none"> Appropriate maps, sections and tabulations are presented in the body of the announcement
Balanced reporting	<ul style="list-style-type: none"> <i>Where comprehensive reporting of all Exploration Results is not practicable, representative reporting of both low and high grades and/or widths should be practiced to avoid misleading reporting of Exploration Results.</i> 	<ul style="list-style-type: none"> All significant intersections above 0.1g/t Au cut off, with maximum 1m internal dilution, have been reported
Other substantive exploration data	<ul style="list-style-type: none"> <i>Other exploration data, if meaningful and material, should be reported including (but not limited to): geological observations; geophysical survey results; geochemical survey results; bulk samples – size and method of treatment; metallurgical test results; bulk density, groundwater, geotechnical and rock characteristics; potential deleterious or contaminating substances.</i> 	<ul style="list-style-type: none"> Geological field observations presented in the body of the announcement
Further work	<ul style="list-style-type: none"> <i>The nature and scale of planned further work (eg tests for lateral extensions or depth extensions or large-scale step-out drilling).</i> <i>Diagrams clearly highlighting the areas of possible extensions, including the main geological interpretations and future drilling areas, provided this information is not commercially sensitive.</i> 	<ul style="list-style-type: none"> Future exploration may include more RC drilling Exploration is at an early stage and future drilling areas will depend on interpretation of results